



# LANTERN

UNIVERSITY OF WISCONSIN-LA CROSSE ALUMNI MAGAZINE

## Wowed by Wittich

WITTICH HALL

PHYSICAL  
19 EDUCATION 16

# LANTERN

UW-LA CROSSE ALUMNI MAGAZINE WINTER 2020-21 | VOL. 47, NO.1

## EDITOR

Brad Quarberg, '85 | Distinguished University Relations Specialist

## ART DIRECTOR

Dave Piro | Creative Services Specialist  
University Communications

## WRITERS

Kyle Farris  
David Johnson, '92  
Kjerstin Lang  
Janie Morgan, '85 & '86  
Brad Quarberg, '85  
Nick Ragner, '14

## PHOTOGRAPHY

Michael Lieurance, '02



[www.uwlax.edu](http://www.uwlax.edu)

The Lantern is published in winter and summer for UWL alumni. Deadlines for copy are April 1 and Oct. 1.

## SUBMIT NEWS ITEMS TO:

Brad Quarberg, University Communications, [bquarberg@uwlax.edu](mailto:bquarberg@uwlax.edu)  
1725 State St. La Crosse WI 54601

## SUBMIT ADDRESS CHANGES TO:

Alumni Association, [alumni@uwlax.edu](mailto:alumni@uwlax.edu), 877UWLALUM  
(877.895.2586) 608.785.8489

UWL Murphy Library archives all past issues of the *Alumnus*/*Lantern* magazine. See: [digitalcollections.uwlax.edu](http://digitalcollections.uwlax.edu)

## CLASS NOTES ONLINE

Go to [www.uwlalumni.org](http://www.uwlalumni.org) for complete class notes each quarter. Click on "News," then "Class Notes."

Class notes policy: The UWL Alumni Association publishes class notes and obituaries online in January, April, July and October. The deadline is the 1st of the month prior to the quarterly posting. See [www.uwlaxalumni.org](http://www.uwlaxalumni.org) for details.

## COVER STORY



## WOWED BY WITTICH

Renovation of the campus' second oldest building is impressive

## FEATURE STORIES



### TOP PROF

Shelly Leshner named American Physical Society Fellow



### LOCKUP LITERATURE

Daughters honor parents with jail literacy fund



### A REAL-LIFE GAME OF CLUE

Alum investigates what's killing freshwater mussels



### WALL OF FAME

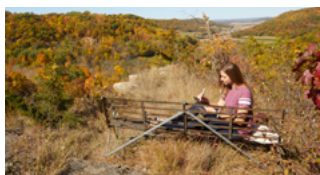
8 inducted into Athletic Wall of Fame

See the whole issue

[uwlax.edu/alumni/lantern/?issue=Winter+2020-21](http://uwlax.edu/alumni/lantern/?issue=Winter+2020-21)



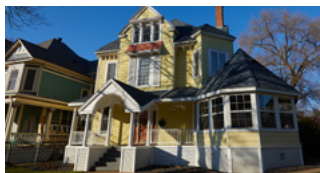
# MORE STORIES FROM THIS ISSUE



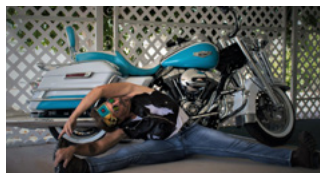
**READY. SET. PAINT!**



**AN EAGLE'S EYE VIEW**



**A HOUSE WITH HISTORY**



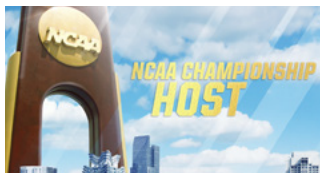
**BALANCED BIKERS**



**FACULTY FAVES: ANNE GALBRAITH**



**NEW FIELDHOUSE WILL HAVE SOMETHING FOR EVERYONE**



**UWL TO HOST NATIONAL CHAMPIONSHIPS**



**THE ICEMAN AWARDETH**

See the whole issue

[uwlax.edu/alumni/lantern/?issue=Winter+2020-21](http://uwlax.edu/alumni/lantern/?issue=Winter+2020-21)



The times they are a changin'...  
**COVID-19 has brought change. Everywhere.**

As we look for even more effective ways to support students and alumni, we may not be able to send publications, like The Lantern, to you as often. Help us in this change! Give us your email. Log into...



[www.uwlax.edu/alumni/about/whats-new-with-you/](http://www.uwlax.edu/alumni/about/whats-new-with-you/)

Thanks for supporting the UWL Alumni Association!