



## WINGS STUDENT CENTER

WINGS Student Center is an online system that you can use to complete the following tasks:

- View enrollment dates and appointments
- View financial aid award
- View transfer credit report
- Search for classes
- View class schedule/ grades
- Register for classes
- View/pay bills online
- Add tower tender
- Update your address, phone and email
- Add emergency contact information

### HOW TO ACCESS WINGS STUDENT CENTER

1. Go to: [www.uwlax.edu](http://www.uwlax.edu)
2. Use the UWL Quicklinks drop down menu at the top of the page and choose "WINGS."
3. Enter your username (student ID) and password. A username and password was sent to you by email when you applied for admission.

### TROUBLESHOOTING

If you have misplaced your password or WINGS login information, reset your information by visiting: <https://secure.uwlax.edu/password>

If you need further assistance accessing your WINGS Student Center, contact the Eagle Help Desk:

- Phone: 608.785.8774
- <https://www.uwlax.edu/its/helpdesk/>

# UNIVERSITY of WISCONSIN LA CROSSE

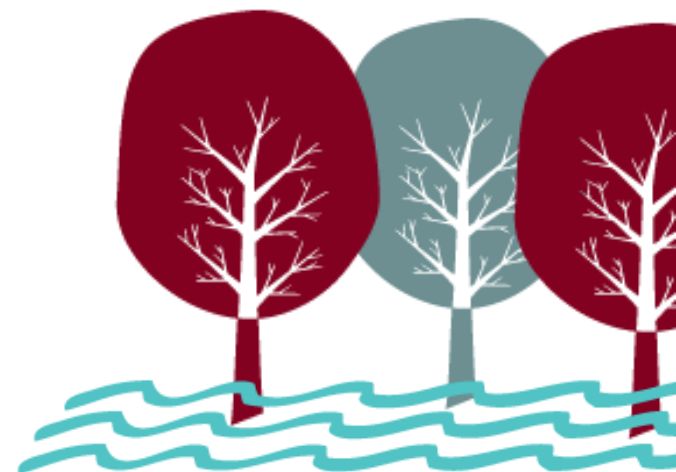
## CONTACT INFORMATION

CAMPUS RESOURCE	PHONE NUMBER
Advising Center	608.785.6950
Bookstore	608.785.8855
Cashier's Office	608.785.8719
Child Care Center	608.785.8813
College of Business Administration	608.785.8090
College of Liberal Studies	608.785.5454
College of Science & Health	608.785.8156
Counseling & Testing	608.785.8073
Eagle Help Desk	608.785.8774
Health Center	608.785.8558
ID Card Office	608.785.8891
International Education & Engagement	608.785.8016
Murphy Library	608.785.8505
Parking Office	608.785.8061
Records & Registration	608.785.8951
Residence Life	608.785.8075
Textbook Rental	608.785.8853



## Registration Technology Information FOR NEW STUDENTS

- WINGS Student Center overview
- Campus email access information
- Registration reminders
- Important websites for registration
- Contact information for campus offices



## Activating your NetID and Email Address

### 1. Activate your NetID

- Visit [www.uwlax.edu/password](http://www.uwlax.edu/password) to activate your NetID.
- Your NetID is used to access most technology on campus, including email.

### 2. Activate your UWL Email Address

- You will receive an email with instructions on how to activate your UWL email address

### Reset Password

If you ever forget your password, need to reset your password or if your email and NetID passwords get out of sync, you can use the tools at [www.uwlax.edu/password](http://www.uwlax.edu/password) to reset or sync your password.

### Trouble logging in?

- For more specific access instructions, visit [www.uwlax.edu/eagleapps/setup.htm](http://www.uwlax.edu/eagleapps/setup.htm)
- If you are still experiencing issues after reviewing the above website, please contact the Eagle Help Desk at 608.785.8774.



## REGISTRATION REMINDERS

1. **View your Enrollment Date** (the first day you are eligible to register for classes) on your WINGS Student Center.
2. Registered students can have their photo taken for a **student ID card** in 1131 Student Union. For more information visit: <https://www.uwlax.edu/university-centers/services/eagle-id-card/eagle-id/>
3. A **student ID is required to obtain your list of books** for the classes you have registered for. Textbook Rental is located in the basement of the Student Union. For more information, please visit: <http://www.uwlax.edu/textbookrental>.

## IMPORTANT WEBSITES FOR REGISTRATION

- **Cashier's Office**  
Fee and billing information, tax reporting information - <http://www.uwlax.edu/cashiers>
- **Undergraduate/Graduate catalog**  
Campus policy information & course descriptions - <http://www.uwlax.edu/records/registration>
- **Records & Registration**  
Deadlines, graduation information, and transcript requests - <http://www.uwlax.edu/records>
- **Timetable Schedule of Classes**  
Information on courses offered, times, and instructors - <http://www.uwlax.edu/records/registration>
- **Transfer Information System (TIS)**  
Information on how courses transfer among UW campuses and Wisconsin Technical Colleges - <http://www.uwsa.edu/tis>