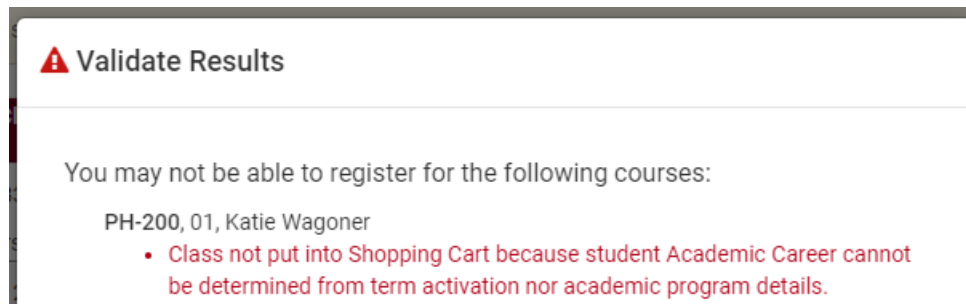


Validating Your Schedule in Schedule Planner (a.k.a. checking the prerequisites)

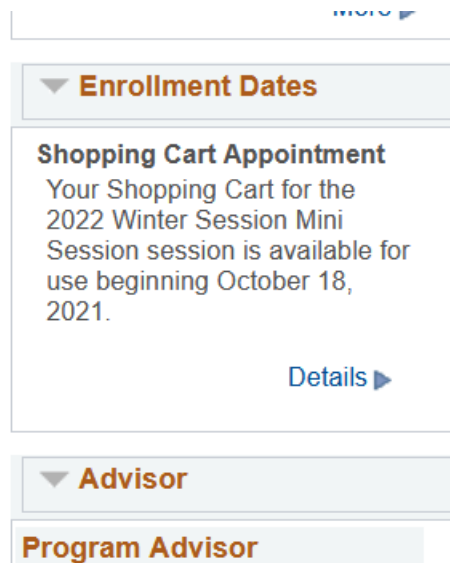
Use this feature to check whether you meet all the course prerequisites **before** you register instead of during the enrollment process.

1. Generate a schedule with one or more courses in it following the steps in "**Search for Classes/Creating a Schedule using Schedule Planner.**"
 - **Important:** You must have a validation appointment to check the prerequisites on your schedule. If you try to validate too early, you will receive this error:



- You can still develop and save a schedule using the Favorites icon to be ready when shopping carts open. You can also verify the courses the day of or a few days before your registration appointment starts.

Tip: to find out if validation appointments have been set, go into your WINGS Student Center and look in the "Enrollment Dates" section on the right hand side. If you see a Shopping Cart Appointment listed, you should be able to validate your schedule.



2. Click on the **View** link next to a potential schedule that you like.
 - If you already have courses in your shopping cart, go directly to the shopping cart by clicking Shopping Cart in the top bar. (If you are on a mobile device, this might be at the bottom.)

3. Click **Validate**

Plan Schedule Shopping Cart (0) Current Schedule (0) Help Sign out

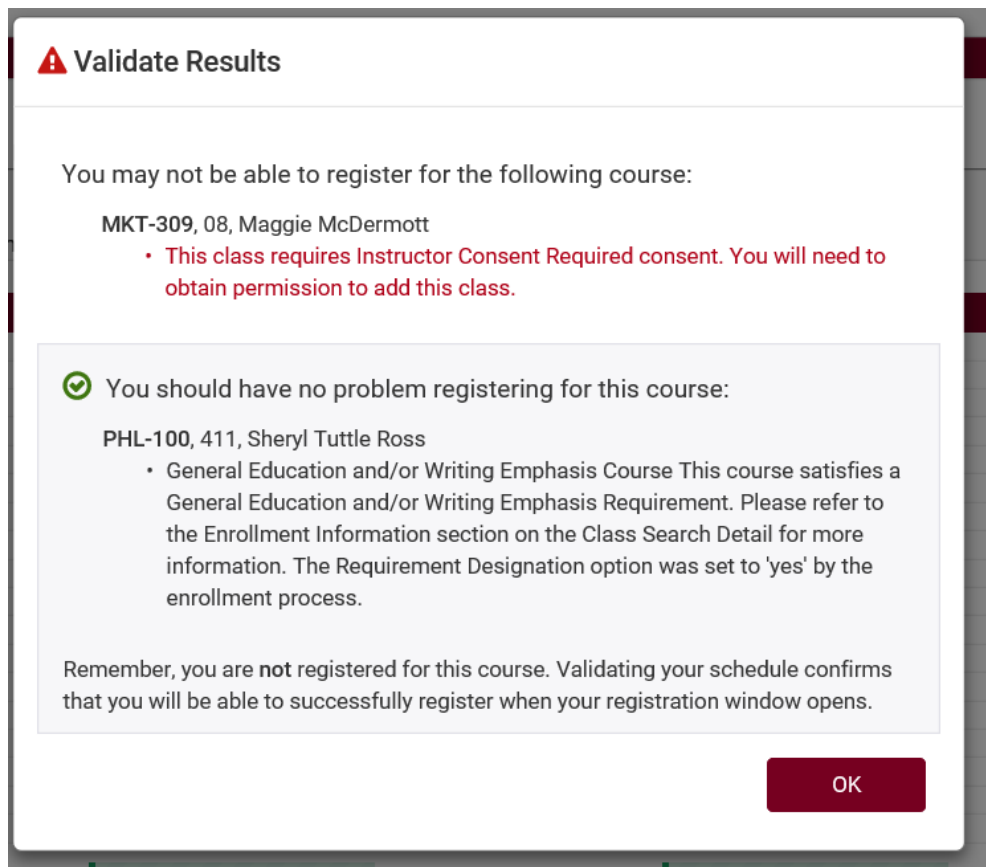
Potential Schedule for Spring 2022

< Back Print Email **Validate** Send to Shopping Cart Schedule 3 of 127

You are viewing a potential schedule only and you must still register.

Status	Class #	Subject	Course	Section	Seats Open	Day(s) & Location(s)	Dates	Credits	Instruction Mode
Not Enrolled	1269	CHM	103	10	121	MWF 7:45am - 8:40am	01/24/2022 - 05/06/2022	0	In Person

4. Review your results. The red X means there is a prerequisite or instructor permission problem. Read the message to find out more.
 - If you receive an "Enrollment Requisites are not met" error, review your Course History to figure out which course or requirement you might be missing. Speak with the department/instructor offering the course if you have questions about the prerequisites.
 - "Consent Required" means you will need permission from the instructor to get into the class.
 - A green checkmark means you will be able to register into the course.
 - If you receive a message that starts with "This course has been taken previously," check your Course History to verify if you received a "D" or "F" in that class. For undergraduates, only classes that have been graded with a "D" or an "F" can be repeated, unless the class is a topics class where you can take it again as a different topic.
 - You will be able to register into this class; however, for a class that is not repeatable, **you will be dropped from the class before the start of the term if you do not drop yourself first.**
 - The message "The Requirement Designation Option was set to "YES" by the enrollment process" means that the course is a general education or writing emphasis course. If there is a green check mark with it, there is no problem.



5. Change or keep courses, as needed.
6. If you add or change courses, be sure to validate again to catch any new errors.

Things to remember:

- Students are able to validate courses in their shopping cart through the 5th day of class.
- In your WINGS Student Center, classes must be in the shopping cart AND there must be a validation appointment in order to validate. Your shopping cart can be found under the "Plan" link in the Academics section, and then by finding the Shopping Cart tab at the top of the next page.

If you have questions, please contact the Records and Registration Office in 117 Graff Main Hall or at records@uwfax.edu, 608.785.8951.