

ME-PD On-Campus Newsletter

Initial-Certification and Professional Development

FALL 2008

SEPTEMBER

UNIVERSITY OF
WISCONSIN
LA CROSSE

ME-PD
PROGRAM

260 MORRIS HALL
1725 STATE ST
LA CROSSE, WI 54601

(608) 785-8142
WWW.UWLAX.EDU/MEPD

INSIDE THIS ISSUE:

Director's Message	1
"Funny in Farsi"	1
May Graduates	1
Program Updates & Helpful Reminders	2
Research Items	2
28th Conference of WSHRA	2
International Students	2
GSO	2
Board of Review Dates	3
Comp. Exam Dates	3
Praxis II Test Info	3
Grant Writing Workshop	3
Research Grants	3
UWL in the News	4
ME-PD Office Staff	4
CEE Staff	4

Autumn Greetings ME-PD Students!



Dr. Rhonda M. Rabbitt, EdD
Interim Director, ME-PD

As we journey thoughtfully into another academic year together, I ask you to reflect on stories . . .

- What stories do you tell that depict who you are?
- What stories describe where you've come from?

- What stories envision where you are going?
- What stories do you still remember from your childhood?
- What stories were missing from your educational experience?

These are not minor questions. They require serious pondering. "The more conscious we are about our stories, and our roles as characters in them, the more clarity we have about who we are and why we are here and how we should act in the world" (Taylor, 1996, p. 2).

As educational leaders, we hold the responsibility to help students understand more than content—they should learn to know themselves. Students should see themselves reflected within the curriculum stories of the classroom. In addition, students should have the opportunity to see through a window to others in order to learn from their stories.

As teachers, we co-create the world in our classrooms every day. As ME-

PD students, we invite you to join us in striving to fulfill the School of Education mission "to develop within its graduates a commitment to the teaching profession, a profound respect for the dignity of all learners, and the professional competencies that enable them to be effective teachers and responsible citizens in a diverse and dynamic world."

How will we accomplish this mission? Through the power of story: "Seeing ourselves as active characters in new and healthy stories carries the power to transform lives" (p. 3).

I hope you find the ME-PD newsletter stories to be informative and intriguing.

Have you read the "Funny in Farsi" story?

Rhonda



What is "Funny In Farsi"?

By now you have probably heard about the common reading program starting this fall at UW-L. We have created an opportunity for all interested faculty and staff to participate in an online discussion of the book "Funny In Farsi" by Firoozeh Dumas. Dumas has assisted in this project by providing her opinion on a number of discussion topics we will make available as part of the discussion. In addition to faculty and staff, parents of students and returning adult learners that are part of the ME-PD program have been invited to join this online discussion. Chancellor Gow

has encouraged everyone on campus to get involved with this event. In addition to the online discussion, Firoozeh Dumas will be speaking on-campus November 18. To get involved contact April Handtke, Residence Life, at handtke.apri@uwlax.edu or 785.8972.



May Graduates

The ME-PD program congratulates its May 2008 graduates!

- Kathleen M. Adamson
- Timothy M. Donahue
- Mark Ovid Dubey
- Katie L. Groves
- Meaghan D. Gustafson
- Kristin A. Halverson
- Ariane D. Hooker
- Gregory J. Lundin
- Amanda E. Moerke

Course & Program Updates

- EFN 760 will be offered Spring 2009 and Summer 2009. ME-PD students should confer with the ME-PD director or academic advisor as to when is the most appropriate time to take the course within their program.
- EDS 710 and EFN 705 will both be offered spring 2009, due to scheduling conflicts in fall 2008. Please do NOT delay in taking these courses. They can be considered entry-level courses for the ME-PD program.
- CI 752 will be offered Spring 2009.
- Please note an error on the original EC-MC/MC-EA guidesheet: EDS 521 should have been denoted with a "B" to be taken concurrently with Field Exp II.



School of Education Conceptual Framework

The School of Education at UW-La Crosse strives to become a leader in the preparation of globally responsive teachers through a University-wide commitment to teacher education.

Helpful Reminders

"Plan Smarter not Harder for your Research!"

- Meet with your advisor.
- Determine your culminating project: seminar paper, thesis, comprehensive exam.
- Coordinate your research with EFN 760.
- Submit all necessary forms to the ME-PD office.
- Submit all necessary forms to the ME-PD office.
- Celebrate your learning in your oral presentation!

Research Items

- **Annual Celebration of Student Research** at UW-L on Friday, April 3, 2009. All materials must be submitted to the ME-PD office by Monday, January 5, 2009.
- **RSEL Grant:** Are you interested in grant money for your research? Turn in applications to the Grad Studies Office by October 10. Contact your advisor for more information.

International Students

The ME-PD program is honored to be a destination for students from around the globe. We welcome our returning and new international students!

- Osama Algaide from Saudi Arabia
- Abdulrahman Almotery from Saudi Arabia
- Shaozhe Lu from China
- Mengxi Sun from China
- Yu Wen Wang from China
- Qiongyan Weng from China
- Anier Bao from China

"Sustaining Hope in the Search for Social Justice"

The 28th Conference of the Wisconsin State Human Relations Association will be held Nov. 20-21 at Wisconsin Dells.

Keynote presentations:

- Dr. Stephanie Fryberg (Tulip, University of AZ) and "The Minority Reporter",

The conference will also feature :

- American Indian studies
- Diversity club topics
- Bilingual education challenges
- GLBT issues
- Service learning curriculum
- Social justice and the role of schools

More information can be found at the website: <http://www.wshra.org/>

Get Involved with GSO!

The Graduate Student Organization (GSO) sponsors an annual orientation for new graduate students at UW-L. We are also dedicated to improving the visibility of graduate students on campus and providing professional and social networking opportunities via travel grants, seminars, and other activities.

For more information contact GSO at: gso@uwlax.edu or check out their Facebook page!

Board of Review Information & Dates

Have you completed, or are you about to complete, **nine credits** of graduate study? If so, you **must** submit a proposal to the Board of Review (BOR). The BOR is an essential component of the ME-PD program, designed as a tool to guide students through their course of study. Failure to do so could block future registration and continued progress in the ME-PD program!

BOR Dates Spring 2009

- February 13: Final BOR documents due.
- February 26: Board of Review Meeting 3-6:30pm in 277 Morris.

BOR Dates Fall 2008

- September 19: Final BOR documents due.
- October 9: Board of Review Meeting 3-6:30pm in 277 Morris.

Grant Writing Workshop

A grant writing workshop will be held on **September 23** in 337 Cartwright Center.

The workshop will cover grant writing tips and application guidelines for both undergraduate and graduate grants. Past grant recipients will be present to share stories and answer questions. Refreshments served. Event sponsored by the Society for Undergraduate Research, Scholarly and Creative Activities, the Graduate Studies Office, and the Provost's Office.

Comprehensive Exam Information & Dates

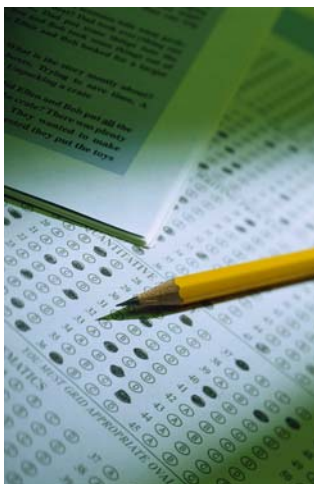
The comprehensive exam is one of three culminating project options for ME-PD students. If you are considering this option, or would like more information, please check the website and contact your advisor or the ME-PD office.

Comprehensive Exam Dates 2008-2009

- Sept. 11: Information Meeting, 6:30pm 277 Morris
- Oct. 18: Exam, 8:00am-12:30pm, 150 Murphy

- Feb. 5: Information Meeting, 6:30pm 277 Morris
- March 7: Exam, 8:00am-12:30pm, 150 Murphy

- April 16: Information Meeting, 6:30pm 277 Morris
- May 30: Exam, 8:00am-12:30pm, 150 Murphy



Praxis II: Subject Assessment Tests

UW-L requires all students to pass the Praxis II **before beginning their student teaching**. Please check the Educational Testing Service's website www.ets.org/praxis for information, including test lists, registration information, etc. When taking the test, do not forget to **designate UW-L** as your score recipient. Below are the coming test dates. Register early as there is limited space.

Upcoming Praxis II Test Dates

- November 15 (two locations, UW-L and Central High School)
- January 10 (UW-L)



Applications sought for \$6,000 Research Grants

Up to \$6,000 per project is available to undergraduate or graduate research projects dealing with solid-waste management. Students from varied disciplines are encouraged to apply.

Students should contact Eileen Norby, research program manager during proposal development, at proposalenor@uwsa.edu. The deadline to apply is **Friday, Oct. 3**. Application materials available at www.uwsa.edu/oslp/em/swrpswrp/



In the News

UW-L Among the “Best Universities”

In a welcome email sent to all students, faculty, and staff, Chancellor Gow listed some impressive statistics about the University of Wisconsin—La Crosse:

- US News & World Report has just listed UW-L as the #2 public masters university in the entire Midwest. In addition UW-L is the only UW comprehensive institution to be in the top 20 among all master’s degree-granting colleges in the Midwest.
- UW-L students scored in the 96th percentile on a test given by Collegiate Learning Assessment.



- UW-L students are twice as likely as their peers at comparable schools to say the university makes a major contribution in their voting habits.
- Last year UW-L athletes earned the highest collective grade point average off all schools in the Wisconsin Intercollegiate Athletic Conference.

New Provost at UW-L

We welcome Dr. Kathleen Enz Finken to UW-L as the new Provost and Vice-Chancellor of Academic Affairs. She comes with 15 years of experience as Dean of the College of Arts at MN State University-Moorehead.

Dr Enz Finken has two grown sons and three grandchildren. She enjoys a variety of outdoor activities. She began her position as Provost this past May, and demonstrates a collaborative leadership model.



The ME-PD website will soon be updated! Check online for the new Initial Certification guidelines.

www.uwlax.edu/MEPD/

ME-PD Office Staff & Fall Schedules

Margie Hylkema

Assistant to the ME-PD Director

271 Morris Hall
(608) 785-5409

8:00-4:30 Mon-Fri

Margie works directly with ME-PD Learning Community director regarding any academic LC issues.

Dr. Patricia Markos

Research & Writing Specialist

268 Morris Hall
(608) 785-5087

8:00-4:30 Mon-Fri

Pat is currently conducting program evaluation, and research for the ME-PD Learning Community.

Janet Craig

ME-PD Program Associate

268 Morris Hall
(608) 785-8142

12:30-4:30 Mon-Fri

Janet is currently assisting in the ME-PD office primarily supporting the on-campus programs.



Scott Swedeon

ME-PD Graduate Assistant

270 Morris Hall
(608) 785-8673

Mon-Thurs

Scott is currently an ME-PD student, working towards licensure in middle-childhood to early adolescence. He assists the ME-PD staff.