

# ME-PD On-Campus Newsletter

Initial-Certification and Professional Development

UNIVERSITY OF  
WISCONSIN  
LA CROSSE

ME-PD  
PROGRAM

FALL 2009

OCTOBER

300B MORRIS HALL  
1725 STATE ST  
LA CROSSE, WI 54601

(608) 785-8130

WWW.UWLAX.EDU/MEPD

## INSIDE THIS ISSUE:

Director's Message	1
May Graduates	1
Course/Program Updates	2
Multicultural Education Conference	2
Children's Literature Conference	2
WSST 2010 Conference	2
International Students	2
GSO	2
Research Items	3
Comp. Exam Dates	3
Praxis II Test Info	3
Student WEA	3
Math Conferences	3
UWL in the News	4
ME-PD Office Staff	4

## Autumn Greetings ME-PD Students!

The weather is having a difficult time deciding whether or not it wants to change, thus playing havoc with people's health and moods. As I sit in my office, looking out on a beautiful fall day, I am reminded that change is inevitable. Many of you are nearing the end of your program and looking toward the next chapter in your life, may be progressing through and for some you have just begun the journey of the ME-PD Program. It is important to note change and to work through how it impacts an individual's choices.

This past April (2009) the ME-PD Program was divided into two separate sections:

The ME-PD Learning Community under the Direction

of Dr. Pat Markos and the ME-PD On-Campus Programs under the Direction of Dr. Gary L. Willhite (myself). It has been a journey to understand the nuances of the on-campus programs and to seek direction in where the university should go with them. (The ME-PD On-Campus Programs include Initial Certification and Professional Development.) The Initial Certification program is strong and growing by admitting new candidates each semester. In Spring 2009, a decision was made to close the current Professional Development strand by not admitting new students. However, a later decision was made to reopen this strand after it has been restructured to provide more direction for students wishing to pursue this strand. In addition, there is conversation with

faculty across campus in developing other possible strands in the future. I will keep you posted.

So, as we enter a season of change, please send your questions and concerns my way. I look forward to continuing the work of the ME-PD On-Campus programs.

Dr G.L. Willhite



**Fall  
Commencement  
Scheduled for  
Sunday,  
December  
20.**



## May Graduates

The ME-PD program congratulates its May 2009 graduates!

- Lindsey Beck
- Mallory Frederickson
- Isabel Hoff
- Amanda Langrehr
- Thaddeus Peterson
- Megan Sacia
- Cassidy Wade
- Jill Wesener
- Timothy Winker
- Xong Xiong

## Course & Program Updates

- Deadline for the **submission of graduate theses** is December 4.
- **PSY 770** is only offered spring semester, please plan accordingly! Spring 2009 it will be offered on Wednesday evenings.

### 8th Annual Children's and Young Adult Literature Celebration

**"Open a Door... Open a Book... Open Your Mind... to the World"**

The **Wisconsin International Outreach Consortium** is sponsoring its annual workshop for educators, librarians, student teachers and children's literature enthusiasts, with an aim to internationalize statewide reading curriculum. Authors of children's literature will discuss the stories they have written and highlight the work they feel is most suitable for classroom discussion. There will also be a reception and book signing.

The celebration will take place on **November 21** at the **Memorial Union at UW-Madison**. Attendees **must pre-register** by **November 13**. For more information, please visit:

[www.wioc.wisc.edu/childlit/2009/registration09.htm](http://www.wioc.wisc.edu/childlit/2009/registration09.htm)

### Get Involved with GSO!

The **Graduate Student Organization (GSO)** sponsors an annual orientation for new graduate students at UW-L. We are also dedicated to improving the visibility of graduate students on campus and providing professional and social networking opportunities via travel grants, seminars, and other activities.

For more information contact GSO at: [gso@uwlax.edu](mailto:gso@uwlax.edu) or check out their Facebook page!

### Statewide Equity and Multicultural Education Student Conference

The **Wisconsin State Human Relations Association (WSHRA)** and the **Department of Public Instruction (DPI)** are focusing on empowering student leaders to embrace diversity and social justice at St. Norbert College in De Pere, WI on **November 19, 2009**.

Sectionals will include topic on American Indian Studies issues, bilingual education, white privilege, GLBT issues, social justice, and more. The keynote speaker will be Dr. Eddie Moore Jr.

For more information, visit [www.wshra.org](http://www.wshra.org)

### Wisconsin Society of Science Teachers 2010 Convention

The **Wisconsin Society of Science Teachers (WSST)** will be holding its 2010 convention at the La Crosse Center **April 15-17, 2010**. The theme of the convention will be "Science on the River Again."

For more information, visit the WSST website: [www.wsst.org](http://www.wsst.org)

### International Students

The ME-PD program is honored to be a destination for students from around the globe. We welcome our returning and new international students!

- Osama Algaide from Saudi Arabia
- Abdulrahman Almotery from Saudi Arabia
- Samiah Tamar from Saudi Arabia
- Shaozhe Lu from China
- Mengxi Sun from China
- Yu Wen Wang from Taiwan
- Qiongyan Weng from China
- Anier Bao from China



School of Education  
Conceptual Framework

*The School of Education at UW-La Crosse strives to become a leader in the preparation of globally responsive teachers through a University-wide commitment to teacher education.*

## Comprehensive Exam Information & Dates

The comprehensive exam is one of three culminating project options for ME-PD students. If you are considering this option, or would like more information, please check the website and contact your advisor or the ME-PD office.

- March 27, 8-12:30 (register by February 19)
- May 22, 8-12:30 (register by April 30)

## Research Items

- **Travel Grant:** Grants are available for travel to professional conferences. For more information, visit [www.uwlax.edu/graduate/deadlines.htm](http://www.uwlax.edu/graduate/deadlines.htm). Email applications to Graduate Studies at [gradstudies@uwlax.edu](mailto:gradstudies@uwlax.edu) by 4pm December 11.
- **Celebration of Student Research:** The UW-L's 13th Annual Celebration of Student research will take place in spring semester. Dates are still being finalized.
- **Need help writing a grant?** Visit [www.uwlax.edu/urc](http://www.uwlax.edu/urc) for a Powerpoint presentation on grant writing.

## Math Conferences

The **National Council of Teachers of Mathematics (NCTM)**, will be holding its regional conference and exposition in Minneapolis on **November 4-6, 2009**.

The conference will include a variety of speakers and workshops, professional networking and development, and the opportunity to examine educational materials. For more information, visit [www.nctm.org/conferences](http://www.nctm.org/conferences)

The **Wisconsin Mathematics Council (WMC)** will be holding its 41st Annual Conference on **May 6-7, 2010** in Green Bay. The conference theme will be "Take Charge to Make Change." For more information, visit [www.wismath.org/annual\\_conference.html](http://www.wismath.org/annual_conference.html)

## Student Wisconsin Education Association (WEA)

**Student WEA** is a pre-professional organization of college students pursuing careers as educators. Student WEA provides an additional perspective on topics in public education such as contracts, salary, PI34, and other educational issues. Membership in Student WEA provides opportunities to attend development conferences.

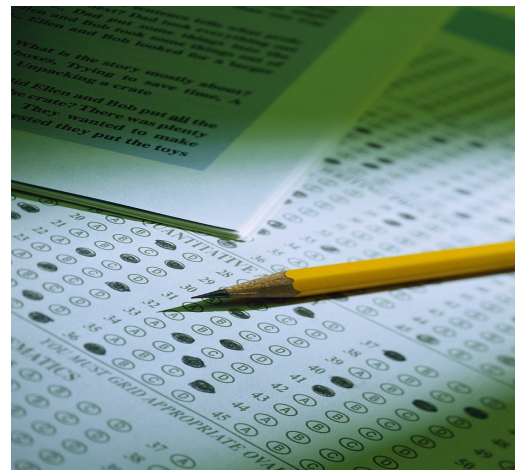
For more information visit the UW-L Student WEA website at:

[www.uwlax.edu/studentwea/](http://www.uwlax.edu/studentwea/)

## Praxis II: Subject Assessment Tests

UW-L requires all students to pass the Praxis II **before beginning their student teaching**. Please check the Educational Testing Service's website [www.ets.org/praxis](http://www.ets.org/praxis) for information, including test lists, registration information, etc. When taking the test, do not forget to **designate UW-L** as your score recipient. Below are the upcoming test dates. Register early as there is limited space.

- November 14th @ UW-L
- January 19th @ UW-L
- March 13th @ UW-L and Central High School
- April 24th @ UW-L





## In the News

### UW-L Rankings

According to *US News and World Report*, UW-L is the topped rank public/private university in the master's category in the state. UW-L ranked number three in the Midwest among public universities that offer bachelor's and master's degrees. Among all public and private institutions, UW-L is tied at 17 with St. Catherine's in Minnesota. UW-L has ranked among the top three Midwest institutions since 2002.

### Influenza Information

UW-L has prepared an information page dealing with influenza, especially the H1N1/Swine Flu strain that has been spreading worldwide and is expected to impact college campuses across the United States. For more

Information about influenza and its symptoms, as well as preventing the spread of influenza, please visit [www.uwlax.edu/sdas/h1n1](http://www.uwlax.edu/sdas/h1n1)

### Pay for Print and Parking Changes

UW-L has changed its printing policies for on-campus computers. Instead of students paying a flat fee and having unlimited printing, students will now pay a fee of six cents per page of printed material. This is intended to cut down on excess printing.

Restricted parking in commuter parking lots has been extended from 5 pm to 7 pm. Those who wish to park in commuter lots before 7 pm will need to purchase a permit through the university. This is intended to help finance construction of a new parking ramp on campus.

## ME-PD On-Campus Staff



### Gary Willhite

Director, ME-PD  
On-Campus Programs  
300B Morris Hall  
[willhite.gary@uwlax.edu](mailto:willhite.gary@uwlax.edu)  
(608) 785-8130

### Scott Swedeon

ME-PD Graduate Assistant  
300G Morris Hall  
Mon-Thurs, 11-4  
[swedeon.scot@students.uwlax.edu](mailto:swedeon.scot@students.uwlax.edu)  
du

