

GLOSSARY

Abrader: a tool made of a coarse material such as sandstone that is used to smooth materials such as bone, antler or wood

Adze a woodworking tool



Adze



Abrader

Anthropologist: a person who studies people and how they live (both past and present people)

Aquatic: growing or living in or around water

Archaeologist: a person who studies past people and how they lived

Artifact: any object made, modified or used by humans



Tossing an atlatl

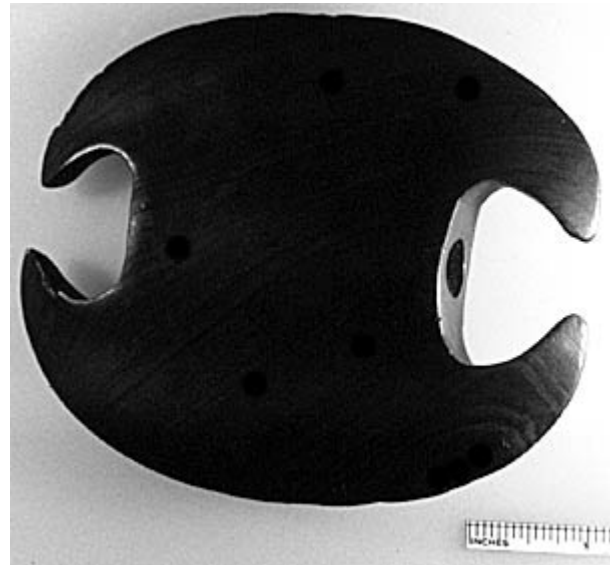
Atlatl: spear-thrower, used with a spear to make the spear travel farther and with more force

Awl: a tool with a sharp tip used for making holes



Copper awl

Bannerstone: a weight placed on an atlatl



Bannerstone



Catlinite objects.

Catlinite /Pipestone: fine-grained red rock that can be carved

See also [Native Technologies-Catlinite](#)

Context: the relationship between artifacts and/or where they are found

Culture: a common way of life of a group of people

Earspool: object placed in a hole in a person's earlobes



Earspool

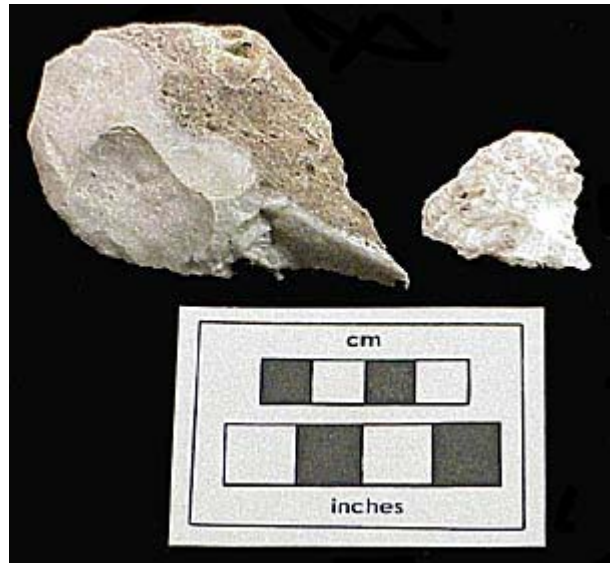
Flintknapping: the process of making stone tools through percussion, one rock hit against another in a specific and controlled way

Flute: long thin flake removed from the base of a projectile point



Folsom point with flute removed.

Graver: a triangular shaped tool used for engraving or incising



Gravers



Hammerstone on left, core on right.

Hammerstone: a stone used for battering or pecking or for making stone tools

Hierarchical Society: a culture whose people are organized into ranks

Historian: a person who studies the past through researching and creating written documents

Lifeway: a way of living shared by a group of people

Marine: from the ocean, not freshwater lakes or rivers

Mano: a hand sized rock used with a metate for grinding food

Metate: a large flat rock used as a grinding surface with a mano



Metate (on bottom) and mano, shown used to grind corn.



Modified Flake: flake of stone that has been modified to be used as a tool

Modified flakes. The right edges of both flakes have been used to scrape or cut.

Palisade: a high post fence or stockade



Stockade reconstructed at Aztalan.



Platform Mound: a large mound of earth with a flat top

Platform mound at Aztalan.

Postmold: stain left in the soil where posts from a structure have decomposed



Postmolds shown in cross-section.

Projectile Point: a man made pointed stone tool used as a tip on spears or arrows



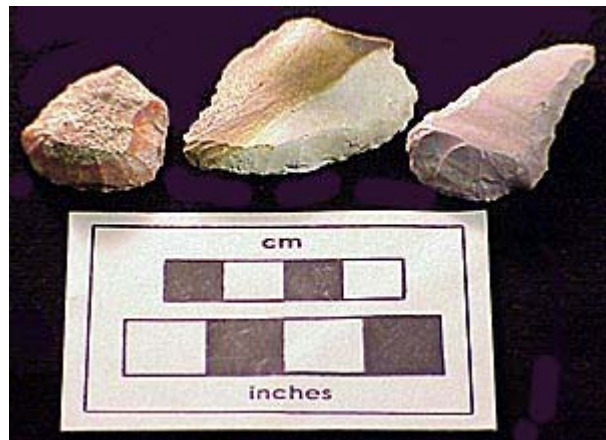
Projectile Points



Two bison scapulas made into hoes.

Scapula: a triangular shaped bone in the shoulder of an animal

Scraper: a tool used for scraping items such as hides



Scrapers

Stockade: enclosure of posts used for fortification or to control entry



Stockade or palisade at Aztalan.

Temper: material (sand, small stones or ground up clamshell) which is added to clay to help prevent shrinkage and cracking when the clay is dried or fired