



# *Graduate Student Guidebook*

MPH-CHE & MS Programs  
Department of  
Health Education and Health Promotion

University of Wisconsin- La  
Crosse  
2011-2012



“When we’re connected to others,

**we become better people.”  
-Randy Pausch**

**TABLE OF CONTENTS**

	Page
Introduction.....	
Graduate Degree Plans.....	3
Course Offerings.....	5
Preceptorships.....	7
Thesis/Graduate Project.....	9
Graduate Assistantships.....	9
Faculty.....	10
Campus Services.....	15
Murphy Library – Carrels.....	15
Campus Computer Labs.....	15
Career Services.....	15
Campus Organizations.....	17
Graduate Student Organization.....	17
Eta Sigma Gamma.....	18
Certified Health Education Specialist.....	19
Directory of Campus Contacts.....	20
Appendix A: MPH-CHE Program Mission, Goal, and Objectives.....	22
Appendix B: University of Wisconsin-La Crosse Organizational Chart.....	23
Appendix C: Dept. of Health Education and Health Promotion Organizational Chart.....	24



## Introduction

This Guidebook is meant to provide students entering into the MPH-CHE and MS programs with more detailed information about the Department of Health Education and Health Promotion at the University of Wisconsin-La Crosse, as well as to offer insights into procedural details. Dr. Gilmore serves as Editor of the Guidebook, with revision assistance for the 2011-2012 edition from Brittany McIlquham, MPH Candidate.

The information in this Guidebook has been generated largely as a result of “frequently asked questions” from current and former students of the MPH-CHE, MS-CHE, and MS-SHE programs. The MPH-CHE Program Mission Statement, Goals, and Graduate Responsibilities are cited in Appendix A.

## Graduate Degree Plans

### **Master of Public Health in Community Health Education**

#### *Plan A: Thesis Option*

CHE 780 Community Health Education Preceptorship.....	8
HED 701 Contemporary Issues in Health Education .....	3
HED 703 Foundations in Health Education.....	3
HED 706 Research Tools and Processes .....	6
P-H 707 Environmental Health.....	3
P-H 717 Emerging Public Health Issues.....	3
P-H 720 Program Assessment, Planning & Evaluation in Health Promotion.....	3
P-H 755 Epidemiology and Public Health Issues .....	3
P-H 790 Public Health Administration and Organization .....	3
HED 799 Research: Master's Thesis.....	4
Electives.....	5
<b>Total Credits.....</b>	<b>44</b>

#### Plan B: Graduate Project Option

The Plan B Option would include the required courses and Preceptorship credits, along with HED 798, Graduate Project in Health Education, plus 7 credits of electives, for a **total of 45 Credits**.

### **Master of Science**

#### *Community Health Education Concentration*

#### *Non-thesis Option Only*

CHE 780 Community Health Education Preceptorship.....	8
HED 703 Foundations in Health Education.....	3
HED 706 Research Tools and Processes .....	6
HED 798 Graduate Project in Health Education .....	4
*Administration and Program Development Core .....	6
*Health Education Processes and Concepts Core.....	6
*Health Content and Skills Core.....	6
Electives.....	4
<b>Total .....</b>	<b>43</b>

### **Master of Science**

*School Health Education Concentration*

*Plan A: Thesis Option\**

HED 706 Research Tools and Processes .....	6
HED 799 Research: Master's Thesis.....	3
SHE 710 Leadership in Health Education .....	3
SHE 715 HE Curriculum and Pedagogy.....	3
SHE 720 Adolescent & Youth Health Issues .....	3
Electives.....	14
<b>Total .....</b>	<b>32</b>

*Plan B: Graduate Project Option\**

HED 706 Research Tools and Processes .....	3
HED 798 Research: Master's Thesis.....	3
SHE 710 Leadership in Health Education .....	3
SHE 715 HE Curriculum and Pedagogy.....	3
SHE 720 Adolescent & Youth Health Issues .....	3
Electives.....	17
<b>Total .....</b>	<b>32</b>

\* Students who enter the program without teaching certification will also need to complete the necessary requirements for certification.

\*See Graduate Catalog for listing of courses included in each Core.

The SHE 910 Add-On Health License information can be accessed through the following link: [www.uwlax.edu/sah/hehp/html/SHE910program.htm](http://www.uwlax.edu/sah/hehp/html/SHE910program.htm)

**Courses Offerings**

Courses numbered 500 through 598 are called “slash courses” and are open to qualifying

undergraduate students (seniors) and graduate students. Those courses numbered 700 and above are open to graduate students only. Students in all graduate programs at the University of Wisconsin-La Crosse must have at least one-half of their total required semester hours as 700-level courses. Check the UW-L Graduate Catalog for class descriptions and listing of pre-requisite courses.

Graduate classes offered on an as-feasible basis are listed below:

- CHE 541 Human Disease Prevention and Control (3 credit)
- CHE 553 Cultural Issues in Health Education: Ethnic, Racial, Religious, and Familial Groups (3 credit)
- CHE 560 Medical Terminology for Health Education (2 credits)
- CHE 565 Health Education Marketing (1 credit)
- CHE 566 Worksite Health Promotion (1-3 credits)
- CHE/SHE 575 Workshop in Health Education (1-3 credits)
  
- HED 509 Stress Management and Relaxation Skills (1 credit)
- HED 512 Women's Health Issues (1-3 credits)
- HED 517 Understanding Child Abuse (1 credit)
- HED 518 Youth Health Issues (1 credit)
- HED 522 Sexual Abuse of Children (1 credit)
- HED 523 Sexual Health Promotion for Persons with Disabilities (1 credit)
- HED 525 Violence and Injury Prevention (3 credits)
- HED 536 Alcohol, Health and Behavior (1 credit)
- HED 537 Theories of Health Behavior (3 credits)
- HED 539 Teaching Stress Management and Relaxation Skills (1 credit)
- HED 547 Body/Mind Connections in Health (1 credit)
- HED 549 Values Development for Health (1 credit)
- HED 567 Experiential Learning Strategies for Health Education (1-2 credits)
- HED 569 Drugs, Society and Human Behavior (3 credits)
- HED 571 Entry-Level Health Educators: Responsibilities and Competencies (2 credits)
- HED 572 Sexual Health Promotion (3 credits)
- HED 573 Health Aspects of Aging (3 credits)
- HED 574 Nutrition Education (3 credits)
- HED 577 Grantseeking in Health, Human Services and Education Professions (1-3 credits)
- HED 585 Confrontations of Death (1-3 credits)
- HED 586 Introduction to International Health (1-3 credits)
- HED 595 Independent Study in Health Education (1-3 credits)
  
- SHE 510 Application of Curriculum Processes and Instructional Techniques (6 credits)
- SHE 515 School Leadership for Health Educators (3 credits)
- SHE 560 Health Promotion and Preference (1-2 credits)

SHE/CHE 575 Workshop in Health Education (1-3 credits)

HED 701 Contemporary Issues in Health Education (3 credits)★

HED 702 Health Issues and Resources for Teachers and Other School Professionals (1-3 credits)

HED 703 Foundations in Health Education (3 credits) ★◆

HED 706 Research Tools and Processes (3-6 credits) ★◆★

P-H 707 Environmental Health (3 credits) ★

HED 710 Risk Reduction for Adult Fitness and Cardiac Rehabilitation (1 credit)

HED 712 Selected Health Topics for Elementary School Teachers (1-3 credits)

P-H 717 Emerging Public Health Issues (3 credits) ★

P-H 720 Program Assessment, Planning, and Evaluation in Health Promotion (3 credits) ★

HED 725 Seminar in Health Education (1-3 credits)

HED 752 Mental Health (3 credits)

P-H 755 Epidemiology and Public Health Issues (3 credits) ★

HED 770 Health Counseling

CHE 780 Community Health Education Preceptorship (8 credits) ★◆

P-H 790 Public Health Administration and Organization (3 credits) ★

HED 798 Graduate Project in Health Education (3 credits) ◆

HED 799 Research: Master's Thesis (4 credits)

SHE 705 Essentials of Health and Wellness (3 credits)

SHE 710 Leadership in Health Education (3 credits)★

SHE 715 Health Education Curriculum and Pedagogy (3 credits) ★

SHE 720 Adolescent and Youth Health Issues (3 credits)★

★Required course for the Master of Public Health in Community Health Education Program

◆ Required course for the Master of Science in Community Health Education Program

★Required course for the Master of Science in School Health Education Program

The usual **course rotation pattern** for 700-level classes is as follows

(Note: Make certain to check with your Graduate Program Director on a regular basis in order to be sure that there have not been any changes):

**Fall** HED 701; HED 703; HED 706 (Research Methods); HED 725; P-H 720

**Spring** HED 706 (Statistics); P-H 717; P-H 790; SHE 705

**Summer** P-H 707; P-H 755; SHE 710; SHE 715; SHE 720

**Preceptorship For Graduate Students: MPH-CHE & MS-CHE Programs**

### Introduction

The Preceptorship is designed to be a practical experience in Community Health

Education (CHE). It is meant to be a time of service and innovation to the agency, as well as a significant learning opportunity. Only through a practical experience such as this, can the efficient application of knowledge, ideas, and skills in realistic settings occur. Both the student and the agency should benefit from the Preceptorship.

### Major Preceptorship Goal

To enable the student to apply, realistically, the knowledge and skills attained in the CHE Program to specific practical community health education issues in the agency setting, resulting in practical service to the agency, and better student preparation for future employment and/or advanced education.

### Involvement

The experience includes, but is not limited to, those agencies that employ and contract with Community Health Educators (public health agencies, voluntary and private agencies, hospitals and clinics, governmental agencies, and business and industrial settings). In these types of settings, students will have an opportunity to experience some of the following Community Health Education processes at the Advanced 1 level:

- Assess individual and community needs for health education
- Plan health education strategies, interventions, and programs
- Implement health education strategies, interventions, and programs.
- Conduct evaluation and research related to health education
- Administer health education strategies, interventions, and programs
- Serve as a health education resource person
- Communicate and advocate for health and health education

The most important element in selecting a setting is the availability of an appropriate Preceptor (on-site supervisor). This person will be the student's mentor during the Preceptorship experience, directing work activities, and evaluating progress toward individual, agency, and University goals.

Preceptorship activities will be based on the following considerations:

1. Strengths of the student
2. The needs and interests of the student
3. The strengths of the agency
4. The needs of the agency

Investigations into possible Preceptorship experiences should begin during the student's second semester. **Final Reports from the Preceptorship sites are on file in Room 201 Mitchell Hall.** Most Preceptorship experiences occur in the third or fourth academic term.

Once a Preceptorship site has been identified, an agency interview will be scheduled. The interview will include the student, the agency Preceptor, and the CHE Graduate

Program Director. The student will develop a Proposal of Involvement, which will then be reviewed and approved by the Program Director. The Proposal will outline specific learning objectives and procedures as to how they can be achieved during the Preceptorship. The Director will submit the Proposal and a resume to the Preceptor before the Preceptorship begins.

All graduate students in Community Health Education have an eight-credit graduate Preceptorship requirement (CHE 780). While the eight credits may be divided between semesters in order to align with other program requirements, a minimum of four credits of CHE 780 must be initially taken. Graduate students enrolling in CHE 780 usually will have successfully completed at least 30 graduate credits.

CHE Graduate students not having one year of health-related experience will need to be involved in a preliminary Preceptorship experience (CHE 498). The CHE Graduate Program Director will make this specific determination at the time of admission.

This field training experience is offered during the Fall, Spring, and Summer Sessions. Determinations regarding schedules are made in consultation with the CHE Graduate Program Director. The following parameters have been developed:

1. Fall or Spring Semester
  - The field experience will commence with the first official class day and terminate with the final official class day. This usually will be 15 weeks.
  - Vacation days during this time period will commensurate with the agency vacation schedule.
  - The student will be involved in the Preceptorship experience for 400 hours.
2. Summer Session
  - The field experience will commence two weeks prior to the Summer Session's first official class day. The Preceptorship will conclude 10-12 weeks later at the end of Summer Session.
  - Vacation days during this time period will be commensurate with agency vacation schedule.
  - The student will be involved in the Preceptorship experience for 400 hours.

*Note:* Special on-site arrangements can be developed with the agency Preceptor during unusual circumstances. These may include different timelines for the Preceptorship or a required departure from the inclusive timeframes cited above. In these instances, the minimum of 400 hours still must be maintained. Contact the CHE Graduate Program Director if there are questions.

### **Thesis/Graduate Project Process**

Specific university-wide guidelines and procedures can be found at <http://www.uwlax.edu/graduate/documents/Thesis%20Guidelines.pdf>

However, it is appropriate to be in communication with the director of your program and departmental faculty regarding your graduate thesis or project intentions. The director

for the graduate community health programs is Dr. Gilmore, and Dr. Caravella is the director for the graduate school health program.

### **Graduate Assistantships**

The College of Science and Health (SAH) offers many assistantships each year to qualified students. To be eligible, students must be unconditionally admitted to an SAH graduate program. Assistantships are available in many programs and include varied professional responsibilities. Assistants are paid a monthly stipend and receive health insurance benefits. Out-of-state tuition waivers are available on a competitive basis. The in-state portion of tuition is not part of an assistantship award. Wisconsin has tuition reciprocity with Minnesota. Assistantships are nine-month positions, late August to late May.

Graduate Assistantships in the Department of Health Education and Health Promotion are offered in Community Health Education and School Health Education. A separate application is required to be eligible for a graduate assistantship. The application is available through the Dean's Office in the College of Science and Health.

## Departmental Faculty Listing

### **Tracy J. Caravella, Ph.D.** (School Health Education)

Graduate Courses: HED 509 *Stress Management and Relaxation Skills*  
(present/recent past) HED 539 *Teaching Stress Management and Relaxation Skills*  
HED 572 *Sexual Health Promotion*  
HED 701 *Contemporary Issues*  
SHE 710 *Leadership in Health Education*  
SHE 715 *Curriculum and Instructional Methodology*

Specialty Areas: Standards Based School Health Instruction  
Curriculum and Instructional Methodology  
Performance Assessment  
Adolescent Health  
Sexuality Education; HIV/ AIDS Education  
Mental Health  
Stress Management  
Death Education

Additionally: Director, Graduate School Health

Office: 202 Mitchell Hall  
Phone: (608)785-6788  
Email: [caravell.trac@uwlax.edu](mailto:caravell.trac@uwlax.edu)

### **R. Daniel Duquette, Ed.D., CHES** (Community Health Education)

Graduate Courses: HED 706 *Research Tools and Processes*  
(present/recent past) P-H 707 *Environmental Health*

Specialty Areas: Environmental Health and Human Ecology  
Cancer Prevention/Education  
Biometry, Evaluation, Research, and Statistics  
Ecological Footprint Analysis  
Health Disparities/Access to Care

Additionally: Chair, Department of Health Education and Health Promotion  
Acting Chair, Department of Educational Studies (240C Morris Hall)  
Director, BS-CHE Program

Office: 206 Mitchell Hall  
Phone: (608) 785-8161  
E-mail: [duquette.rod@uwlax.edu](mailto:duquette.rod@uwlax.edu)

**Gary D. Gilmore, MPH, Ph.D., MCHES** (Community Health Education)

Graduate Courses: CHE 780 *Community Health Education Preceptorship*  
HED 571 *Health Education Responsibilities, Competencies,  
and Certification*

(present/recent past) HED 702 *Health Issues for Teachers and Other Sch. Prof.*  
P-H 755 *Epidemiology and Public Health Issues*  
P-H 790 *Public Health Administration and Organization*

Specialty Areas: Epidemiology, Biostatistics, and Research Design  
Public Health Assessment, Planning, and Evaluation  
International Health and Global Relations  
(Fulbright Senior Scholar in India, 1999-2000)  
Family Health and Wellness  
Cancer Prevention and Detection  
Psychological Type and Preference  
La Crosse Wellness Project

Additionally: Director, Graduate Community Health/Public Health Programs  
Director, Community Health Programming Unit, CEE UW-La Crosse  
Director, La Crosse Wellness Project  
Graduate Preceptorship Coordinator

Office: 201 Mitchell Hall  
Phone: (608) 785-8163  
E-mail: [gilmore.gary@uwlax.edu](mailto:gilmore.gary@uwlax.edu)

**Robert A. Jecklin, MPH., Ph.D.** (Community Health Education)

Graduate Courses: HED 537 *Theories of Health Behavior*  
(present/recent past) HED 569 *Drugs, Society, and Human Behavior*  
HED 573 *Health Aspects of Aging*  
P-H 717 *Emerging Public Health Issues*  
P-H 720 *Program Assessment, Planning, & Eval. in Health  
Promotion*  
CHE 541 *Human Disease Prevention and Control*

Specialty Areas: The Continuing Education and Learning of Adults  
Informal Learning Predicaments  
Social Epidemiology  
Health Care Utilization Behavior  
Obstacle and Barrier Analysis

Additionally: Coordinator, Undergraduate Preceptorships

Office: 209 Mitchell Hall

Phone: (608) 785-6791  
E-mail: [jecklin.robe@uawlax.edu](mailto:jecklin.robe@uawlax.edu)

**Gail L. McCormick, MS** (School Health Education)

Graduate Courses: HED 572 *Sexual Health Promotion*  
(present/recent past)

Specialty Areas: Education  
Adolescence  
Health & Wellness

Office: 200 Mitchell Hall  
Phone: (608) 785-6793  
E-mail: [mccormic.gail@uwlax.edu](mailto:mccormic.gail@uwlax.edu)

**Michele L. Pettit, MPH, Ph.D., CHES** (Community Health Education)

Graduate Courses: HED 703 *Foundations of Health Education*  
(present/recent past) HED 541 *Human Disease Prevention and Control*  
HED 509 *Stress Management and Relaxation Skills*  
HED 572 *Sexual Health Promotion*  
PH 717 *Emerging Public Health Issues*

Specialty Areas: Stress/Coping  
Health Risk Behaviors  
Health Disparities  
Health Communication  
Professional Preparation  
Teaching Strategies

Office: 207 Mitchell Hall  
Phone: (608) 785-6789  
Email: [pettit.mich@uwlax.edu](mailto:pettit.mich@uwlax.edu)

**Keely Rees, Ph.D.** (Community Health Education)

Graduate Courses: HED 512 *Women's Health Issues*  
(present/recent past) HED 574 *Nutrition Education*

HED 522 *Sexual Abuse of Children*  
HED 577 *Grantseeking in Health, Human Services, and Education Professions*  
HED 701 *Contemporary Health Issues*  
HED 703 *Foundations in Health Education*

Specialty Areas: Women's Health  
-Maternal and Child Health, Pregnancy  
-Contemplative Practices  
Tobacco Control/Education  
Community Coalition Building  
Worksite Wellness  
Wellness and Nutrition Policy in Schools

Additionally: Eta Sigma Gamma co-advisor

Office: 217 Mitchell Hall  
Phone: (608) 785-8168  
Email: [rees.keel@uwlax.edu](mailto:rees.keel@uwlax.edu)

**Karen M. Skemp-Arlt, Ph.D., C.S.C.S., HFS** (Health Education/Health Promotion)

Office: 212 Mitchell Hall  
Phone: (608) 785-8187  
Email: [skemp.kare@uwlax.edu](mailto:skemp.kare@uwlax.edu)

**Emily A. Whitney Ph.D., CHES** (Community Health Education)

Graduate Courses: HED 509 *Stress Management and Relaxation Skills*  
(present/recent past) HED 541 *Human Disease Prevention and Control*  
HED 569 *Drugs/Society and Human Behavior*

HED 573 *Health Aspects of Aging*

Specialty Areas: Social Support and Health  
Social Capital  
Community Capacity  
Coordinated School Health Programs  
Adolescent Health and Physical Activity  
Mental Health

Office: TBD  
Phone: TBD; (435) 770-9305 mobile  
Email: [whitney.emil@uwlax.edu](mailto:whitney.emil@uwlax.edu)

**Marcie R. Wycoff-Horn, Ph.D.** (School Health Education)

Graduate Courses: SHE 510 Application of Curricular Processes and Techniques  
(present/recent past) SHE 515 *Leadership in School Health*  
SHE 720 *Adolescent and Youth Health Issues*  
HED 572 Sexual Health Promotion  
HED 517 *Understanding Child Abuse*  
HED 585 *Confrontations of Death*

Specialty Areas: Standards-Based Instruction  
Performance Assessment  
Youth & Adolescent Health Issues  
Health Education for Elementary Teachers  
Safety and Injury Prevention for Youth  
Death Education

Additionally: Interim Undergraduate Program Director, School Health Education  
Student Teaching Coordinator  
Eta Sigma Gamma co-advisor

Office: 205 Mitchell Hall  
Phone: (608) 785-6786  
E-mail: [wycoff-h.marc@uwlax.edu](mailto:wycoff-h.marc@uwlax.edu)

**Campus Services**

**Murphy Library Graduate Carrels**

Private study carrels are available in the lower level of Murphy Library for graduate

students working on theses, seminar papers, and other research projects. Carrels are assigned on a semester by semester basis. Carrel assignments are restricted to graduate students the first weeks of Fall and Spring term. Thereafter, graduate or undergraduate students will be assigned in the order of application date. Application forms are available online.

### **Campus Computer Labs**

Computer labs are located in various locations around campus for use by students. Students can call (608) 791-1176 to access a recording of the computer lab hours that may change over the summer session and during breaks. Lab hours are also listed on the web at <http://www.uwlax.edu/gca/html/labhours.htm>. Current lab locations and times are as follows:

**Wimberly Hall 202 Computer Lab:**

8:00 am to 10:00 pm Monday - Thursday  
8:00 am to 4:00 pm Friday  
Closed Saturday  
Closed Sunday

**Murphy Library 153 Computer Lab:**

8:00 am to 12:00 am Monday - Thursday  
8:00 am to 4:00 pm Friday  
12:00 am to 5:00 pm Saturday  
12:00 pm to 12:00 am Sunday

**Wing Technology 02 Computer Lab:**

7:00 am to 12:00 am Monday - Thursday  
7:00 am to 4:00 pm Friday  
12:00 pm to 5:00 pm Saturday  
12:00 pm to 12:00 am Sunday

### **Career Services**

Career Services encourages you to come to their office early and to use their services throughout your academic career for the best career preparation. As a graduate student, all of the services are available to you. Please register with the Career Services office to take advantage of the resources available.

Career Services is available to all students and alumni of the University of Wisconsin-La Crosse. Located in the new academic building, Centennial Hall, room 1140, the center is open from 7:45am to 4:30pm, Monday through Friday; after hours appointments are available. The center's staff can assist you in determining career goals, gaining work experiences relevant to your major, and in developing a job campaign strategy.

#### Services Available at Career Services

**Eagle Opportunities:** Located at the Career Services Website, [www.uwlax.edu/CareerServices](http://www.uwlax.edu/CareerServices), on the left hand side, "Student Login". There are a number of great resources for use. There are on-campus interview opportunities with employers who visit campus. There is also information on writing resumes and cover letters, interviewing, and job fairs, and links to salary information, job sites, and specific company site. There is a special "Going Global" section where you can view job listings/opportunities in countries around the world, or in different U.S. cities.

By clicking on "How to Use Eagle Opportunities" you'll have a better understanding of what is offered and where to go for different questions.

If you have any further questions contact Angie Lee at (608) 785-8514 or [lee.mary@uwlax.edu](mailto:lee.mary@uwlax.edu). Specifically for graduate students, she would love to sit down with you and discuss any questions, or options you are thinking about pursuing post-graduation.

## Campus Organizations

### **Graduate Student Organization (GSO)**

#### Purpose

- Create a collective identity for graduate students at the University of Wisconsin-La Crosse.
- Act as a focal point for communication among graduate students, faculty, and administration.
- Promote the intellectual development, professional development, and social interaction of graduate students through sponsorship of graduate activities.
- Foster the development of graduate studies at the University of Wisconsin-La Crosse.

#### Membership

Membership is open to all UW-La Crosse graduate students, regardless of age, race, creed, color, handicap, gender, sexual orientation, developmental disability, national origin, ancestry, marital status, arrest record, or conviction. There are no annual membership dues.

#### Leadership Team

The leadership of GSO consists of one or more chairpersons who coordinate the activities of the organization. Chairpersons are currently enrolled graduate students and are appointed at the end of the previous academic year. Any graduate student member is invited to join the leadership team if interested. Terms of office are for one year.

#### Meetings and Events

Meetings and/or events are held at various times throughout the semester. Generally, one or two events are coordinated each semester to bring students from all programs together. Any suggestions for potential events/programs/meetings should be directed to the GSO email account, [gso@uwlax.edu](mailto:gso@uwlax.edu) or one of the co-chairs.

#### 2010-2011 GSO Co-Chairs

Michelle Stertz; [stertz.mich@uwlax.edu](mailto:stertz.mich@uwlax.edu)

Carrie Einck; [einck.carr@uwlax.edu](mailto:einck.carr@uwlax.edu)

#### Graduate Studies Contact

Dr. Vijendra Agarwal

Associate Vice Chancellor for Academic Affairs

220 Morris Hall

(608) 785-8007, [agarwal.vige@uwlax.edu](mailto:agarwal.vige@uwlax.edu)

## **Eta Sigma Gamma, Beta Phi Chapter**

### Purpose

The purpose of Eta Sigma Gamma National Health Science Honorary is to further the professional competence and dedication of the individual members in the health science field. Since Eta Sigma Gamma is a national organization, members can maintain their membership throughout their professional life.

Each member upon initiation receives a certificate of membership, membership card and the official pin of the honorary. In addition, membership includes a subscription to *The Health Educator* and *The Health Education Monograph Series*. This affords an excellent vehicle for sharing ideas about the profession. There is also a national conference each year which members are invited to attend. Members have an opportunity to participate in research, education, and community service projects.

For more information please visit the Eta Sigma Gamma, Beta Phi Chapter website at <http://www.uwlax.edu/EtaSigmaGamma/>

### Contacts

*Dr. Keely Rees*  
217 Mitchell Hall  
(608) 785-8168  
[rees.keel@uwlax.edu](mailto:rees.keel@uwlax.edu)

Also you may email Eta Sigma Gamma at: [EtaSigmaGamma@uwlax.edu](mailto:EtaSigmaGamma@uwlax.edu)

**The Certified Health Education Specialist (CHES)**

The Certification as a Health Education Specialist (CHES) is earned through an examination process that evaluates knowledge of the responsibilities and related competencies defined by *A Competency-Based Framework for Health Educators-2006*.

The certification as a Health Education Specialist is awarded by The National Commission for Health Education Credentialing after a candidate has completed academic coursework from an accredited institution and successfully completed the written examination. Students who are within 90 days of graduation also are able to sit for the exam. The examination, offered in April and October at the University of Wisconsin-La Crosse and elsewhere in the United States, is available to qualified undergraduate and graduate students. The fee depends upon how early application is made and whether or not one is a student (Note: Fee increases each year are possible):

U.S. Postmarked on or before		Non-Student Fee	Student Fee
April Exam	October Exam		
December 1	June 1	\$240.00	\$210.00
January 2	July 1	\$250.00	\$210.00
February 1	August 1	\$280.00	\$210.00
March 1	September 1	\$330.00	\$265.00

Note: Make sure to go to the NCHEC web site to verify due dates and fees.

The certification process is intended to:

- Verify an individual’s knowledge and skills in the defined areas of health education competencies.
- Identify qualified health educators to employers
- Recognize commitment to the profession.

For more information on eligibility or how to register for testing, contact:

The National Commission for Health Education Credentialing, Inc.  
 1541 Alta Drive, Suite 303  
 Whitehall, PA 18052-5642  
 Telephone: (808) 624-3248

Or visit NCHEC on the web at [www.nchec.org](http://www.nchec.org)

Study materials can be received from above phone number and website for NCHEC (recommended materials include the framework and study guide)

### **Directory of Campus Contacts**

<b>Department or Unit</b>	<b>Phone Number</b>	<b>Location</b>	<b>Hours (M-F)</b>
<b>Cashier's Office</b>	(608) 785-8719	121 Main Hall	8:00 am to 4:00 pm
<b>General Computer Access Hours Line</b>	(608) 791-1176	Murphy Library	24/7 (pre-recorded)
<b>Disability Resource Services</b>	(608) 785-6900	165 Murphy Library	8:00 am to 4:30 pm (or by appt.)
<b>Financial Aid</b>	(608) 785-8604	215 Main Hall	7:45 am to 4:30 pm
<b>Information</b>	(608) 785-8000	Information Center	24/7 (switchboard)
<b>Instructional Technology Support Center</b>	(608) 785-8774	103 Wing Technology	Mon-Thur 7:30 am to 6:30 pm Fri 7:30 am to 4:30 pm
<b>Murphy Library – Hours Line</b>	(608) 785-8808	Murphy Library	24/7 (pre-recorded)
<b>Murphy Library – Information Literacy Instruction</b>	(608) 785-8637	122 Murphy Library	Varies (Cris Prucha)
<b>Parking Office</b>	(608) 785-8061	Parking and Transportation Services 525 East Ave North	8:00 am to 4:30 pm
<b>Protective Services (Non-Emergency)</b>	(608) 789-9000	Police Services 525 East Ave North	24/7
<b>Protective Services (Emergency)</b>	(608) 789-9999	Police Services 525 East Ave North	24/7
<b>Department or Unit</b>	<b>Phone Number</b>	<b>Location</b>	<b>Hours (M-F)</b>
<b>Records and Registration</b>	(608) 785-8576	117 Main Hall	7:45 am to 4:30 pm

<b>Joe Gow Chancellor</b>	(608) 785-8004	135 Main Hall	Varies
<b>Dr. Kathleen Enz. Finken Provost and Vice Chancellor for Academic Affairs</b>	(608) 785-8042	227 Main Hall	Varies
<b>V. J. Agarwal Associate Vice Chancellor and Director of Graduate Studies</b>	(608) 785-8007	220 Morris Hall	Varies
<b>Bruce Riley Interim Dean of College of Science and Health</b>	(608) 785-8218	105 Main Hall	Varies
<b>Daniel Duquette Health Education &amp; Health Promotion Department</b>	(608) 785-8161	206 Mitchell Hall	Varies

**Appendix A  
Directory of Campus Contacts**

**MPH-CHE Program Mission Statement, Goals, and Graduate Responsibilities**

**Mission Statement:**

The mission of the MPH-CHE Program is to prepare professionals using the advanced-level (MPH-CHE) health education competencies and public health core areas who will address quality of life enhancement through health education and health promotion, mindful of the holistic, dynamic and interdependent nature of people and their interactions with and within the environment.

**Program Goals:**

- To prepare graduate public health practitioners in the advanced-level public health core areas and health education competencies through the necessary coursework, Preceptorship, and culminating program experiences.
- To prepare graduate public health practitioners in research planning, implementation, and reporting that will contribute to their advanced-level competency development.
- To prepare graduate public health practitioners in interactive opportunities with parties internal and external to the University of Wisconsin-La Crosse for the sharing of knowledge, resources, and advice.

**Seven Areas of Responsibility for Health Educators:**

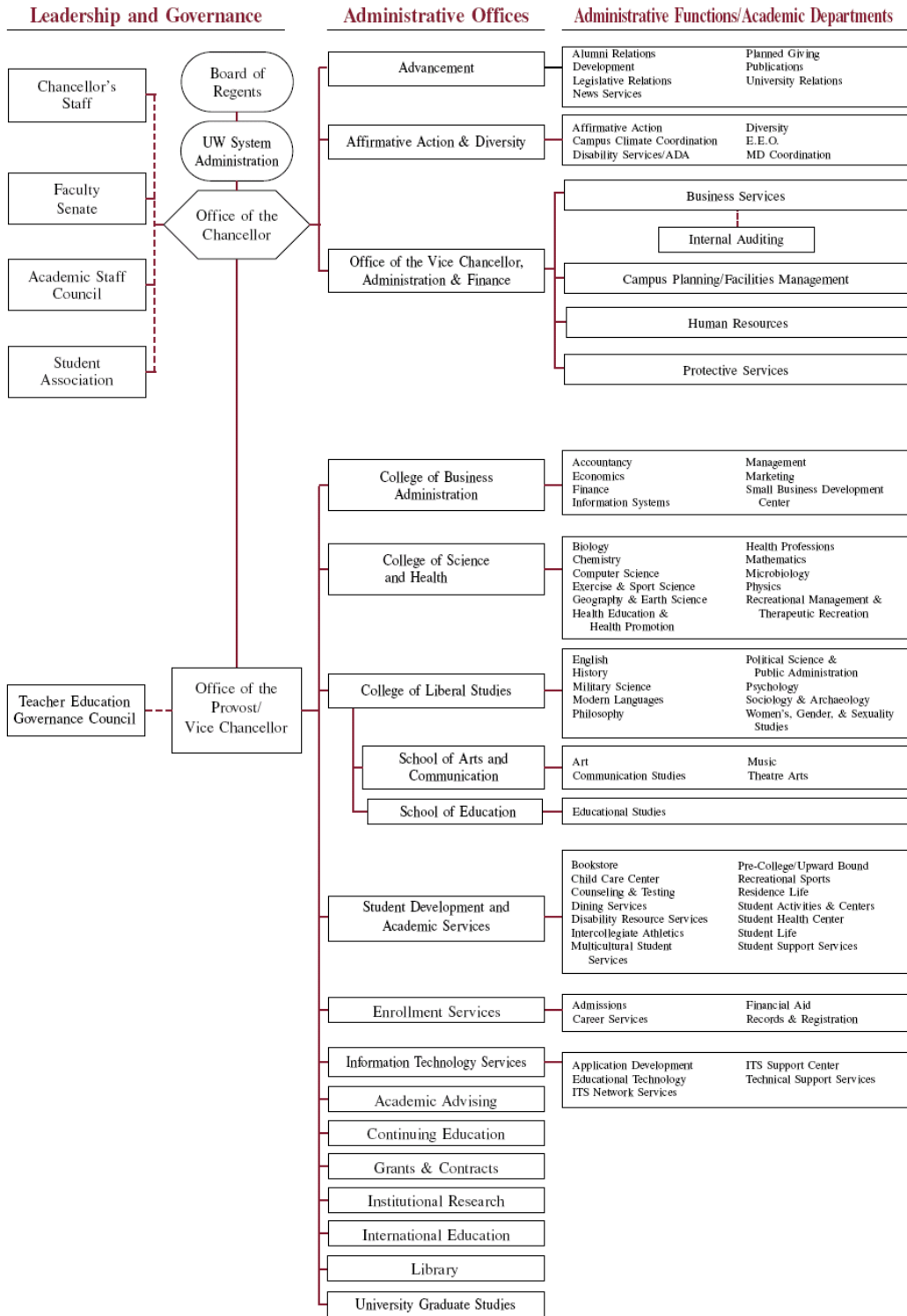
- I. Assess Individual and Community Needs for Health Education**
- II. Plan Health Education Strategies, Interventions, and Programs**
- III. Implement Health Education Strategies, Interventions, and Programs**
- IV. Conduct Evaluation and Research Related to Health Education**
- V. Administer Health Education Strategies, Interventions, and Programs**
- VI. Serve as a Health Education Resource Person**
- VII. Communicate and Advocate for Health and Health Education**

**Five Core Components of Public Health:**

- **Epidemiology**
- **Biostatistics**
- **Environmental Health**
- **Health Services Administration**
- **Social and Behavioral Science**

**Appendix B**

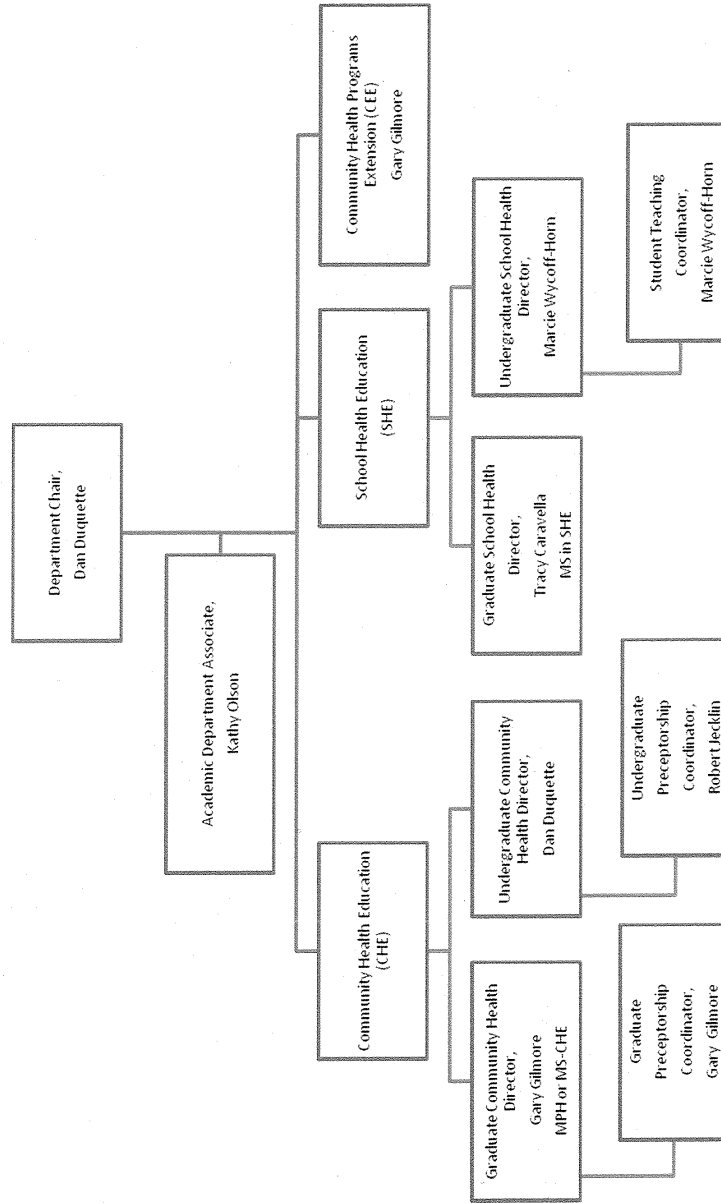
# Organizational Chart (updated December 6, 2005)



## Appendix C: Department of Health Education and Health Promotion

Health Education and Health Promotion  
University of Wisconsin-La Crosse

Organizational Chart



Revised Fall 2008