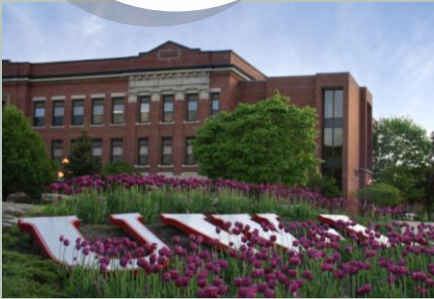




Financial Aid Edition

EAGLE MAIL

January 2015 | Volume 2 | Issue 7



Online version available at
<http://www.uwlax.edu/finaid/Financial-Aid-newsletter/>

IMPORTANT DATES

Monday, January 26 – First day of classes for spring semester. Financial Aid disbursed

Wednesday, February 11 – Love & Money – 6:30pm to 7:30pm, 260 Graff Main Hall

Tuesday, February 17th – Your Credit Score - It's Worth Knowing – 6:30pm to 7:30pm, Ward Room, Cartwright Center

Wednesday, February 18 – Summer & Part-time Job Fair, 10am to 3pm, Valhalla, Cartwright Center

University of Wisconsin-La Crosse Financial Aid Office

215 Graff Main Hall
1725 State Street
La Crosse, WI 54601 USA

Phone: 608.785.8604
Fax: 608.785.8843

Office Hours:
Monday-Friday
7:45 a.m.-4:30 p.m.

email: finaid@uwlax.edu
www.uwlax.edu/finaid



It's Time to File Your FAFSA

It's that time of year again. Time to complete the Free Application for Federal Student Aid (FAFSA) for the upcoming 2015-16 academic year! All applicants for financial aid must submit a FAFSA each year.

UW-La Crosse has a priority date of March 15th each year for consideration of all types of aid. This is not a deadline. Applications are accepted throughout the academic year.

We strongly recommend that you use the IRS Data Retrieval option to help complete the FAFSA. Within 2-3 weeks after filing your taxes electronically, you should be able to retrieve your federal tax data from the IRS, right into your FAFSA. When completing the tax information on the FAFSA, indicate "Already Filed" and select the "IRS Data Retrieval" option when given.

Summer and Part-time Job Fair

The annual Summer and Part-Time Job Fair will take place on Wednesday, February 18, 2015 from 10 a.m. to 3 p.m. in Valhalla, Cartwright Center.

Meet with summer camp employers from throughout the USA who are seeking employees. You can also meet with on- and off-campus employers looking for summer and part-time employees.

The event is co-sponsored by the UW-L Career Services and Financial Aid Offices

Ask Earnest

"Dear Earnest, Why did I get this 1098-T document?"

By the end of January, all students will be sent notice about their 1098-T. This 1098-T document has information about the amount each student paid in qualified tuition and educational expenses in the previous calendar year. It also has information on the amount received in scholarships and grants. The 1098-T information along with your personal financial records may be helpful when filing your federal income tax form. See the article on page 2 of this newsletter to find out what educational tax benefits you may qualify for.

Questions regarding your 1098-T should be directed to the UW-L Cashier's Office at (608) 785-8719.

It Make\$ Cents!

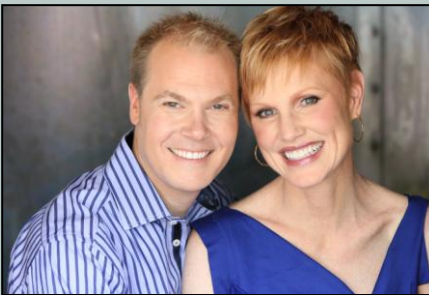
Love & Money

Wed. Feb. 11,

6:30 – 7:30 p.m.

Valhalla, Cartwright

**This event is free &
open to the public!**



Scott & Bethany Palmer
“The Money Couple”

- * Find out how to have a great relationship
- * Find out your 2 Money Personalities and how they are different than your significant other’s
- * Find out how your Money Personalities impact your thinking
- * For fun – take the free Money Personalities Assessment at www.themoneycouple.com before the event

Brought to you by It Make\$ Cents! Money Management Center and made possible by the Otto Bremer Foundation.



www.uwlax.edu/it-makes-cents

Prom Dress Resale

The It Make\$ Cents! Prom Dress Resale is back by popular demand! Last year, the sale generated over \$5,000 in sales that went back to our students! You name the price and you keep all of the money if your dress sells. If you are looking to get rid of that gently used prom dress that is just sitting in the back of your closet, please let us know!

Drop off dresses Feb. 18-20th, 342 Cartwright Center.

Sale will be open February 21st and 22nd, Cartwright Center, to anyone looking for an amazing prom dress.

Contact us at:

EMAIL: itmakescents@uwlax.edu

PHONE: 608-785-8852

ReUse, ReCycle and ReProm!

SCHOLARSHIPS DUE IN JANUARY

For more scholarships, go to <https://uwlax.academicworks.com> and choose the External tab

[Microsoft Corporation Scholarship](#)

Amount:
Deadline: 1/30/2015

[Technology Addiction Awareness Scholarship](#)

Amount: \$1500
Deadline: 1/30/2015

[AWM Essay Contest Scholarship](#)

Amount:
Deadline: 1/30/2015

[Cancer for College](#)

Amount:
Deadline: 1/31/2015

[I Have a Dream Scholarship](#)

Amount: \$1500
Deadline: 1/31/2015

[Baer Reintegration Scholarship](#)

Amount:
Deadline: 1/31/2015

[Click on the name of the scholarship for the application process.](#)

2014 Education Tax Credits

Take the time to check out the federal education tax benefits to see if you qualify. The best resource is the IRS website – www.irs.gov, specifically IRS publication 970. All benefits are dependent on your income and eligibility.

There are two main types of educational tax benefits – a credit or a deduction. Claim one or the other, not both. The most common credit is the American Opportunity Tax Credit: Maximum \$2500 credit for qualified educational expenses per student. Another credit option is the Lifetime Learning Credit: Maximum \$2000 credit per tax return. If you are currently paying student loans there is a Student Loan Interest Deduction.

