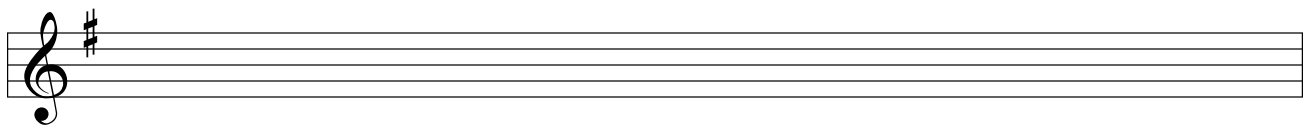
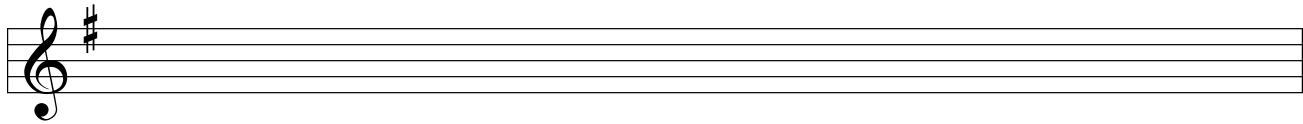
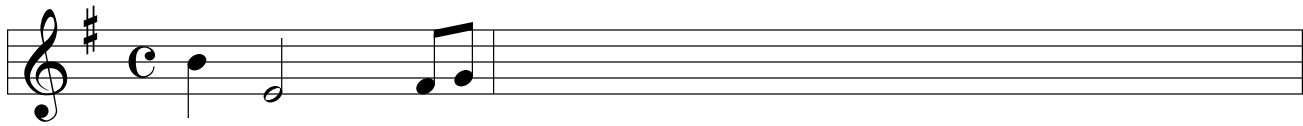


1. Write an 8-10 measure melody using this motive. Include both tonal and real sequences and a phrase extension. Identify the high point of the melody. Label phrases and cadences.



2. Identify all examples of the following in these three melodies:

- Key
- type of meter
- type of period structure
- cadences (type)
- sequences
- motives



b



c.

Two staves of musical notation in treble clef, key of D major (one sharp), 6/8 time. The melody consists of two phrases: the first phrase has four measures of eighth-note patterns, and the second phrase has four measures ending with a half note.

3. Compose a two phrase melody in a major key that forms a contrasting period.

Two blank musical staves in treble clef for composing a two-phrase melody in a major key.

4. Compose a two phrase melody in a minor key that forms a parallel period.

Two blank musical staves in bass clef for composing a two-phrase melody in a minor key.

5. Realize the harmonies in simple position in both clefs then identify the key, roman numerals and cadence.

Musical notation for harmonic realization. The bass staff shows notes with figured bass: 6, #, and two whole notes. The treble staff shows chords: a triad (F#, G#, A#), a dyad (B, C), and a triad (D, E, F#).