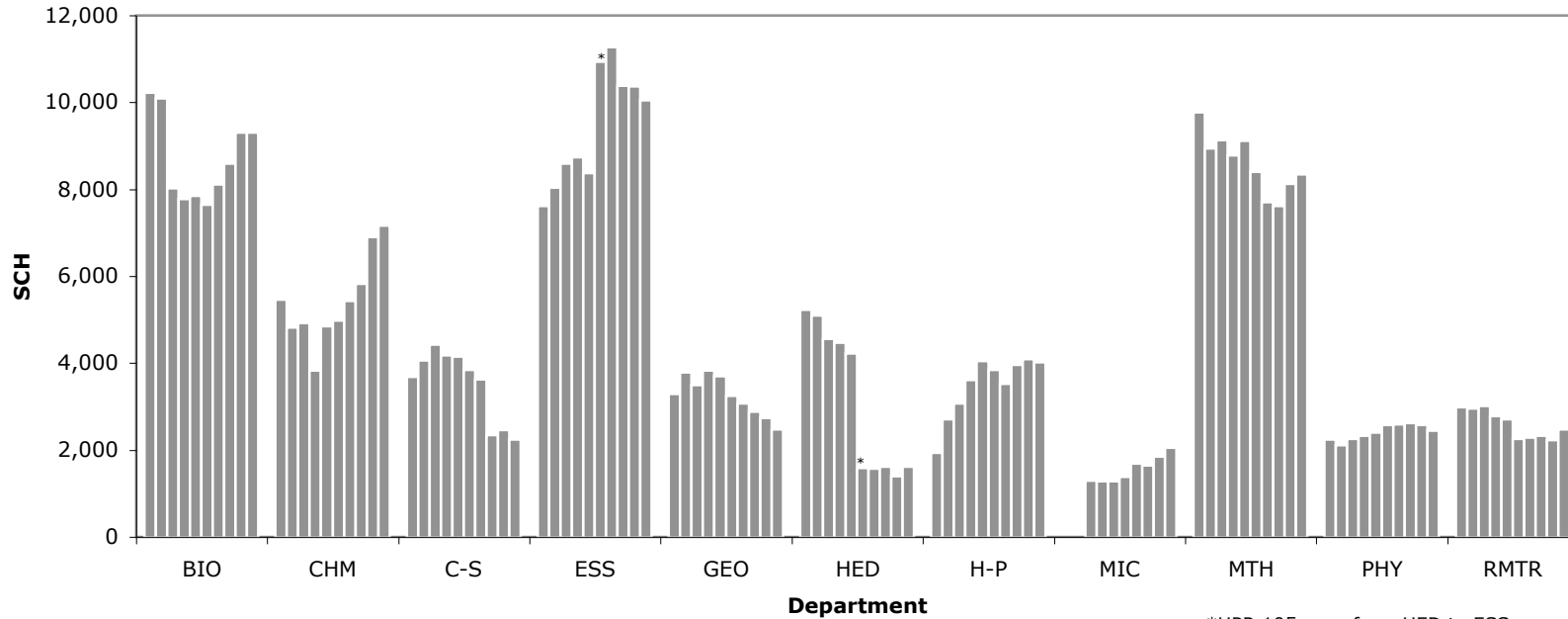


CSAH SCH History (Fall 1997-2006)

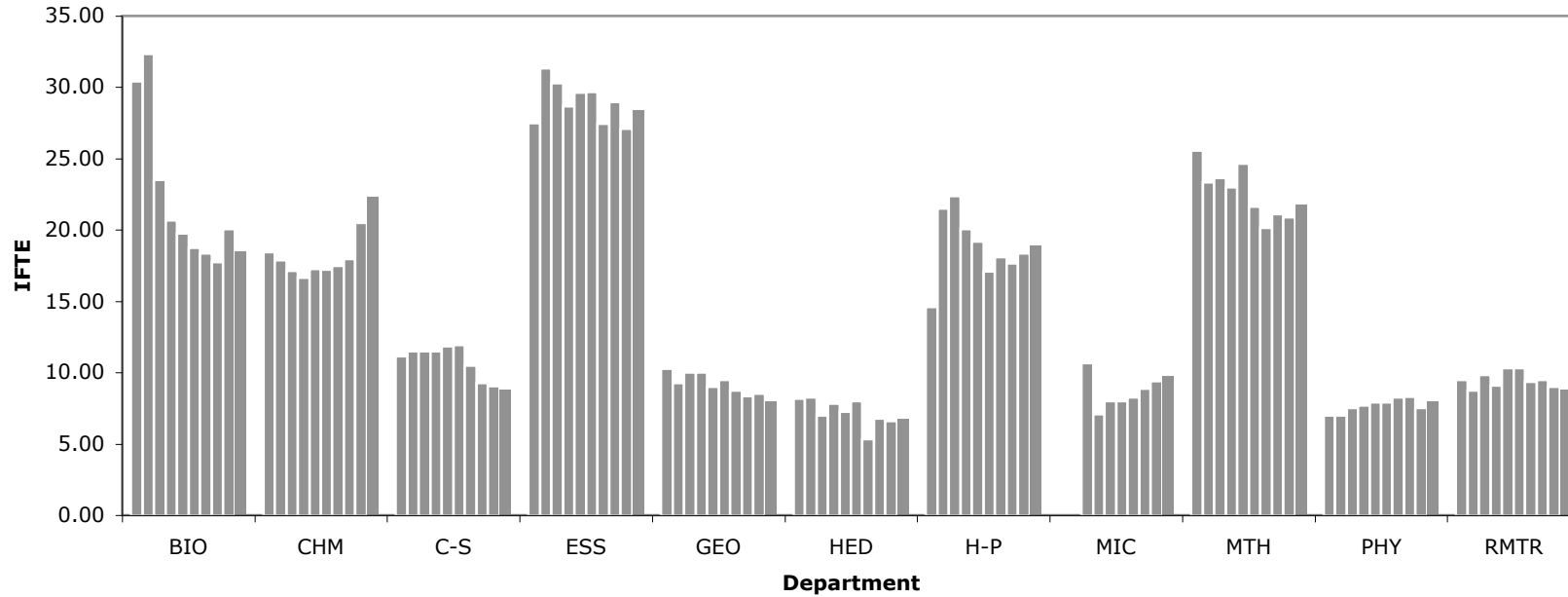


*HPR 105 goes from HED to ESS

SCH	Fall 1997	Fall 1998	Fall 1999	Fall 2000	Fall 2001	Fall 2002	Fall 2003	Fall 2004	Fall 2005	Fall 2006
BIO	10,227	10,095	8,028	7,775	7,849	7,639	8,118	8,598	9,301	9,308
CHM	5,464	4,826	4,920	3,835	4,845	4,977	5,430	5,818	6,897	7,171
C-S	3,680	4,069	4,429	4,175	4,153	3,847	3,624	2,338	2,463	2,249
ESS	7,617	8,041	8,586	8,743	8,374	10,931	11,273	10,377	10,363	10,043
GEO	3,290	3,782	3,502	3,832	3,697	3,249	3,072	2,880	2,744	2,480
HED	5,227	5,098	4,563	4,470	4,230	1,582	1,580	1,614	1,404	1,617
H-P	1,941	2,703	3,068	3,618	4,054	3,849	3,529	3,962	4,097	4,016
MIC			1,300	1,284	1,278	1,379	1,690	1,648	1,854	2,053
MTH	9,779	8,940	9,138	8,778	9,111	8,399	7,701	7,614	8,125	8,351
PHY	2,249	2,113	2,258	2,323	2,408	2,582	2,591	2,628	2,576	2,447
RMTR	2,991	2,959	3,012	2,786	2,716	2,262	2,285	2,330	2,231	2,474

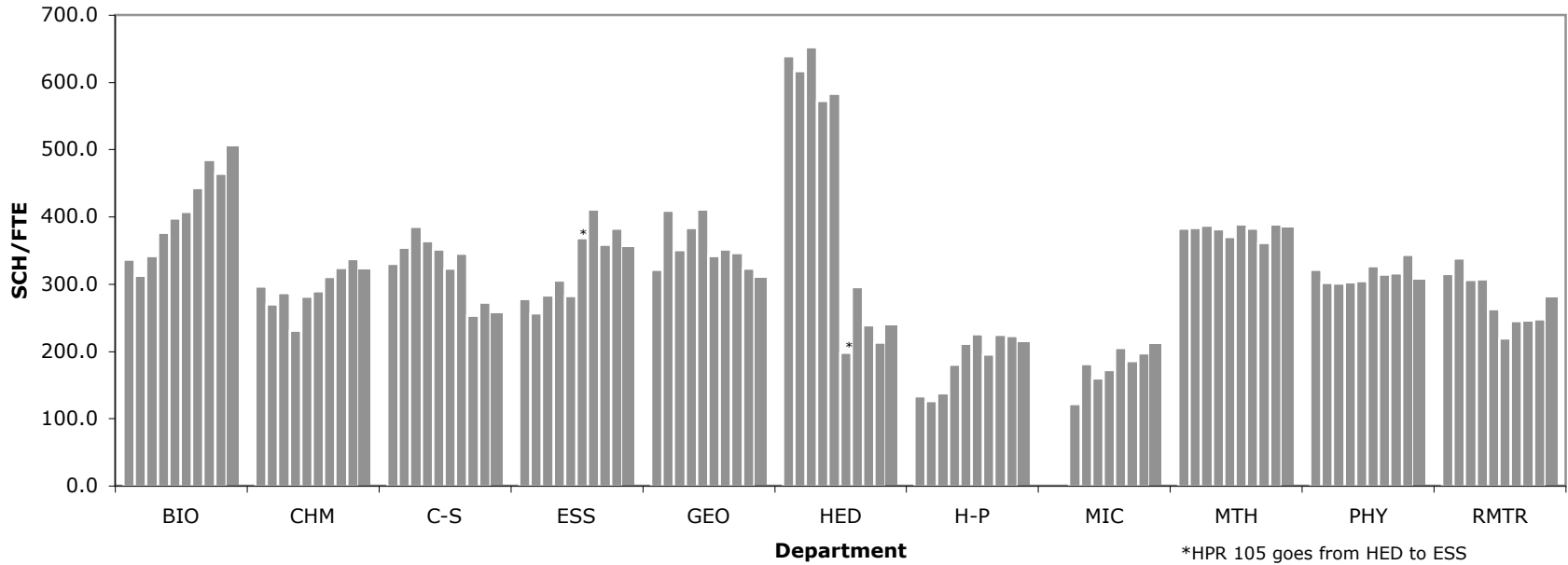
Updated: Dec 15, 2006

CSAH Instructional FTE History (Fall 1997-2006)



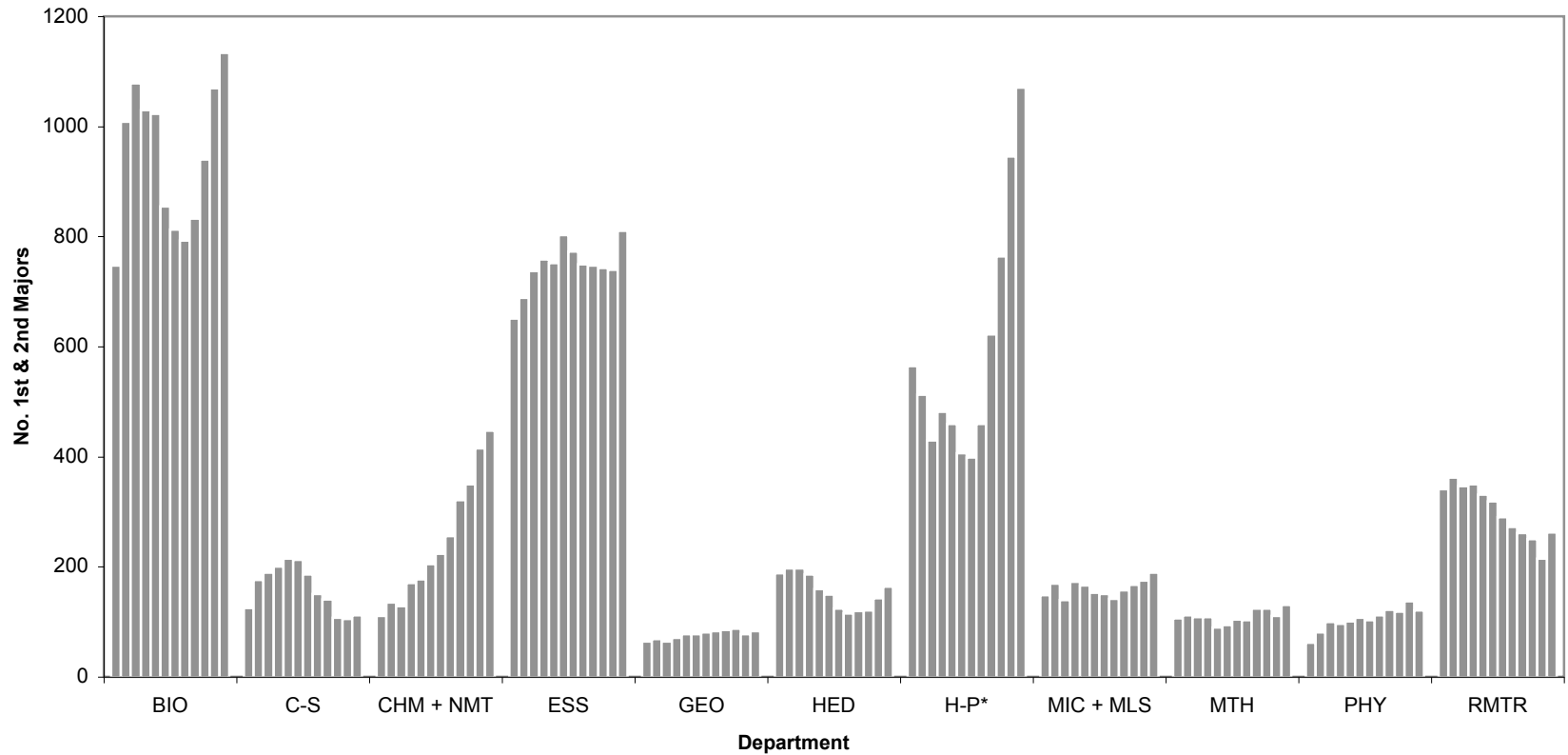
IFTE	Fall 1997	Fall 1998	Fall 1999	Fall 2000	Fall 2001	Fall 2002	Fall 2003	Fall 2004	Fall 2005	Fall 2006
BIO	30.40	32.32	23.50	20.65	19.75	18.75	18.35	17.75	20.04	18.48
CHM	18.43	17.89	17.15	16.65	17.25	17.23	17.50	17.96	20.48	22.27
C-S	11.16	11.50	11.49	11.49	11.82	11.91	10.50	9.25	9.04	8.77
ESS	27.47	31.35	30.29	28.68	29.64	29.69	27.46	28.97	27.09	28.39
GEO	10.25	9.25	10.00	10.00	9.00	9.50	8.74	8.33	8.50	8.00
HED	8.18	8.27	7.00	7.81	7.26	8.00	5.34	6.76	6.60	6.77
H-P	14.6	21.48	22.36	20.05	19.2	17.08	18.07	17.66	18.34	18.89
MIC			10.67	7.08	8.00	8.00	8.25	8.88	9.41	9.73
MTH	25.55	23.32	23.65	23.00	24.65	21.63	20.16	21.11	20.89	21.77
PHY	7.00	7.00	7.50	7.67	7.91	7.91	8.25	8.31	7.50	8.00
RMTR	9.50	8.75	9.83	9.08	10.33	10.33	9.33	9.47	9.02	8.83

CSAH SCH/IFTE History (Fall 1997-2006)



SCH/FTE	Fall 1997	Fall 1998	Fall 1999	Fall 2000	Fall 2001	Fall 2002	Fall 2003	Fall 2004	Fall 2005	Fall 2006
BIO	336.4	312.3	341.6	376.5	397.4	407.4	442.4	484.4	464.1	503.68
CHM	296.5	269.8	286.9	230.3	280.9	288.9	310.3	323.9	336.8	322.00
C-S	329.7	353.8	385.5	363.4	351.4	323.0	345.1	252.8	272.5	256.44
ESS	277.3	256.5	283.5	304.8	282.5	368.2	410.5	358.2	382.5	353.75
GEO	321.0	408.9	350.2	383.2	410.8	342.0	351.5	345.7	322.8	310.00
HED	639.0	616.4	651.9	572.3	582.6	197.8	295.9	238.8	212.7	238.85
H-P	132.9	125.8	137.2	180.4	211.1	225.4	195.3	224.3	222.5	212.60
MIC			121.8	181.4	159.8	172.4	204.8	185.6	197.0	211.00
MTH	382.7	383.4	386.4	381.7	369.6	388.3	382.0	360.7	388.9	383.60
PHY	321.3	301.9	301.1	302.9	304.4	326.4	314.1	316.2	343.5	305.88
RMTR	314.8	338.2	306.4	306.8	262.9	219.0	244.9	246.0	247.3	280.18

CSAH Undergraduate Majors (Fall 1995-2006)



	1995	1996	1997	1998	1999	2000	2001	2002	2003	2004	2005	2006
BIO	747	1009	1078	1029	1023	855	812	793	833	940	1069	1134
C-S	125	176	189	200	215	212	186	151	141	107	105	112
CHM + NMT	111	135	128	171	177	205	224	256	321	350	415	447
ESS	651	689	737	758	752	803	773	750	747	743	740	810
GEO	64	69	64	71	77	78	81	83	85	87	78	83
HED	188	197	197	186	159	149	124	115	120	121	143	164
H-P*	565	513	429	481	459	406	399	459	622	764	945	1070
MIC + MLS	148	169	140	173	166	153	151	142	157	167	175	189
MTH	106	112	108	109	90	94	104	103	124	124	111	131
PHY	62	81	100	96	101	107	103	112	122	118	137	121
RMTR	341	362	346	350	331	319	290	272	261	250	215	262

* H-P includes a mixture of undergraduates & graduates accepted into DOS, OT, PA, PT, and RT programs.

It also includes a significant number of undergraduates who declared pre-OT, pre-PA, pre-PT, or pre-RT as their second major.