

THE OCCASIONAL

A Newsletter for Sociology/Archaeology Major
Fall, 2011
Anthropology/Archaeology/Criminal Justice/Sociology Minors

MASS ADVISING INFORMATION NIGHT FOR ARCHAEOLOGY MAJORS TUESDAY, November 1st, 2011 from 5:00 – 5:30 PM ARCHAEOLOGY in 102 CWH

From the Department Chair

Greetings!

As of this fall, the department has 178 sociology majors, 110 archaeology majors, 75 anthropology minors, 8



Archaeology minors and 112 sociology minors. The interdisciplinary minor in criminal justice has 104 minors. I mention the number of majors and minors to encourage you as students to get to know as many of your fellow classmates as possible. Don't just learn about social interaction in group settings-engage in it! Create study groups, discuss important social issues and get involved!

The department is doing very well on all fronts. This fall, the department welcomes our newest faculty member, Jon Baker, who teaches Archaeology. Stop by and talk with him about his areas of expertise. Last May, Dr. Jac Bulk retired from the department (he is graciously teaching with us this semester), and in May 2012, Dr. Al Gedicks will retire. The department is in the process of searching for two Assistant Professors of Sociology to fill our vacancies. As this newsletter goes out, we are arranging to bring candidates to campus from 10/27-11/11. We will let you know when we have on-campus interviews so that you may participate in this very important process.

In the past year, we have seen an increase in students in sociology, anthropology, archaeology and criminal justice engaging in undergraduate research projects and presenting at professional conferences. We strongly encourage all students to think about engaging in undergraduate research and internship experiences. Talk with a faculty member to find out more about these programs.

I strongly encourage you to become actively involved in your academic experience by

challenging yourself. Take a class that you would not have thought of taking; review the requirements for Honors in Archaeology and Honors in Sociology and get involved in an honors project, or ask a faculty member how to you can collaborate with them on a research project; get involved in an internship or volunteer experience; or Join the Sociology Club's Facebook page; join the Sociology/Social Issues Club/AKD Honor Society or the Archaeology Club. These activities will look great on your vita or resume! If you have any questions about programs in the Department, please stop by to introduce yourself and talk with me.

Best Wishes for a successful semester,

Kim Vogt



Attention Sociology Majors!

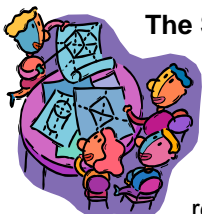
The American Sociological Association's *Style Guide, 4th edition*, which you will use throughout your career as a sociology major at UW-L, is available for purchase (\$20) from the ASA's website directly: <http://www.e-noah.net/asa/asashoponlineservice/productslist.aspx?CategoryID=ASARefMat&selection=6>

We strongly encourage all students to purchase a copy of the style guide for their own library.



Club News and Notes

The **Archaeology Club** - If you are interested in finding out about club activities or becoming more involved, talk to Dr. Baker. You can also visit the club website for the most recent news and activities at: <http://www.uwlax.edu/arcclub/>



The **Sociology Club** is in full swing! Any students interested in volunteering or meeting other sociology and criminal justice students should feel welcome to come to any of the club meetings or events. If you have any questions about the Soc Club or if you want to receive emails about any upcoming events or volunteer opportunities, email the club representatives (socclublax@gmail.com) or Dr. Nicholas Bakken (bakken.nich@uwlax.edu). We look forward to seeing you at our next meeting!

Winter Term 2012 Courses

SOC 225 Racial and Ethnic Minorities

January 3 - 20; M, T, W, Th; 9:00 a.m. to 12:30 p.m.
Room 338 CWH
Instructor: Dr. Vincent Her

An investigation into the social dynamics shaping racial and ethnic minority experience in America. Processes of prejudice formation and prejudice reduction are discussed. The nature of institutional discrimination and institutional racism is analyzed in proper socio-historical context. Minority group achievements and legacies are emphasized. Contemporary issues and assessment of minority group progress in America are vigorously examined.



SOC 326 - Sociopharmacology

January 3 - 20; T, W, Th, F; 9:00 a.m. to 12:30 p.m.
Room 340 CWH
Instructor: Dr. Bill Zollweg

The course examines the current and historical cultural patterns of drug use in society. The emphasis will be on understanding the sequence of initiation, use, misuse, and addiction of psychoactive drugs in society. Special attention is given as to how the addicted brain functions, which contributes to many life course problems.



The course involves an investigation of the social problem aspect of drugs in society. How are drugs, as social problems, defined and made salient in the

SOC 326 – Sociopharmacology – Cont.

public imagination? How does society choose which drugs to treat as social problems? The course examines the laws and public policies intended to solve the social problem of drugs. What are the potential versus real life effects of current laws and policies intended to curb drug use among the population?

The course offers a review of the many treatment and prevention approaches currently used in society. What are the treatment and prevention strategies used today? What kinds of programs are successful and why?

Prerequisite: SOC 110 or 120 or ANT 101



SOC 330 - Social Psychology

January 3 – 20

Online

Instructor: Dr. Tim Gongaware

Social psychology from a sociological perspective. Primary attention is given to social behavior and communication patterns in terms of their genesis and change in the context of social groups and social relationships.

Prerequisite: SOC 110 or 120 or 200 or ANT 101 or PSY 100.

Spring 2012 Courses

SOC/ANT 202 Contemporary Global Issues

T/TH 2:15 p.m. to 3:40 p.m.

Room 141 CWH

Instructor: Dr. Christine Hippert

This course presents students with the main concepts, theories, and methods of cultural anthropology to shed light on issues that connect people both near and afar. Throughout the course, we will dissect certain popular assumptions about living in a global world, exploring such questions as: How do we understand the vast variety of cultural practices around the world? What does it mean to be part of a culture? What is globalization, and how is globalization more a process of differentiating peoples rather than one in which people become the same? How do global phenomena such as migration, development and international aid, and tourism shape the way we define the authenticity of culture? How do social inequality and economic disparity affect global patterns of disease and violence, and what is being done, and can be done, about it? How is defining human rights a cultural process, and how is this reflected in international economic and social policies? By revealing the



SOC/ANT 202 Contemporary Global Issues-Cont.

cultural roots of everyday behavior, this course applies anthropological perspectives to arrive at alternative ways of seeing and solving contemporary social problems.

SOC 212 – Marriage and Family

M/W; 2:15 p.m. to 3:40 p.m.

Room 122 CWH

Instructor: Dr. Carol Miller



An investigation into the many facets of love and how marriage and family experiences typically alter the nature of marital intimacy. The social construction of our sexual identities is also explored as well as the significance of this process to our quality of life. The major course emphasis is given to understanding the contemporary institutions of marriage and family, and the changes that these institutions are now experiencing.

SOC/ERS 280 - Hmong Americans

M/W; 3:55 p.m. to 5:20 p.m.

Room 3101 Centennial Hall

Instructor: Dr. Vincent Her



This course provides an introductory overview of Hmong history, culture, and contemporary adaptation in the United States of America. Areas of exploration will include ancient and modern Hmong history, the Hmong oral tradition, the traditional clan and leadership structure, Hmong musical heritage, Hmong craft heritage, marriage and funeral practices, child-rearing customs, traditional methods of conflict resolution, the tradition of ancestor worship, and herbal and spiritual healing practices. Contemporary developments and adjustment issues within the Hmong communities will be discussed. These will include current Hmong business initiatives, educational achievements, utilization of welfare institutions, the role of Hmong Mutual Assistance Associations, intergenerational conflicts, youth gangs, traditional vs. modern family structure, and Hmong exposure to public prejudices and discriminatory practices. Throughout the course Hmong achievements and triumphs over adversity also will be highlighted. (Cross-listed with ERS; may only earn credit in ERS or SOC.)

Prerequisite: sophomore standing recommended.

SOC 324 - Criminal Justice

T/Th; 12:40 p.m. to 2:05 p.m.

Room 338 CWH

Instructor: Dr. Kim Vogt



This course provides an overview of the United States criminal justice system. Issues relating to various segments of the criminal justice system, such as the administration of justice, the police, courts, and correctional systems are explored.

Prerequisite: SOC 110 or 120 or ANT 101.

SOC 325 - Sociology of Mental Illness

M/W; 2:15 p.m. to 3:40 p.m.

Room 338 CWH

Instructor: Professor Tim Thornton



An examination of mental health and illness, and mental health care systems in the U.S. and other industrialized and non-industrialized societies, including: the processes involved in identifying and recruiting patients into the mental

health care system; a social analysis of psychotherapy, including talk therapies, medications, electro-convulsive treatment and psychosurgery; and social organization of mental hospitals and of community mental health centers; socio-legal issues related to mental illness; and a review and synthesis of social psychological and sociological theories relevant to understanding mental health and illness.

Prerequisite: SOC 110 or 120 or 200 or ANT 101 or PSY 100.

SOC 326 - Sociopharmacology

M/W/F; 12:05 p.m. to 1:00 p.m.

Room 340 CWH

Instructor: Dr. Bill Zollweg



The course examines the current and historical cultural patterns of drug use in society. The emphasis will be on understanding the sequence of initiation, use, misuse, and addiction of psychoactive drugs in society. Special attention is given as to how the addicted brain functions, which contributes to many life course problems.

The course involves an investigation of the social problem aspect of drugs in society. How are drugs, as social problems, defined and made salient in the public imagination? How does society choose which drugs to treat as social problems? The course examines the laws and public policies intended to solve the social problem of drugs. What are the potential versus real life effects of current laws and policies intended to curb drug use among the population?

SOC 326 – Sociopharmacology – Cont.

The course offers a review of the many treatment and prevention approaches currently used in society. What are the treatment and prevention strategies used today? What kinds of programs are successful and why?

Prerequisite: SOC 110 or 120 or ANT 101

SOC 328 Environmental Sociology

T/Th; 2:15 p.m. to 3:40 p.m.
Room 113 CWH
Instructor: Dr. Al Gedicks

This course will give special attention to the situation of native peoples, both in the United States and elsewhere, where issues of environmental degradation and human rights are inseparable. Students will have the opportunity to study the successful struggle to stop the development of a controversial zinc/copper mine near Crandon, Wisconsin by an Indian-environmental coalition as well as the ongoing struggle to stop the proposed taconite (iron ore) strip mine in the Penokee Hills of Iron and Ashland Counties.



Three in-class examinations will be given. Each exam will consist of two or three essay questions. All questions appearing on the exam are taken from a list of questions distributed ahead of time. One quarter of the grade will involve a panel presentation where students will join with other students to read and present information and analysis on their chosen topic. Among the panel topics students can choose from are the following: Big Oil vs. Ecuadorian and Colombian Indians, Freeport Mining in West Papua, Nigeria's "Drilling Fields," the Social Origins of the Environmental Justice Movement and the Crandon, Wisconsin Mine Controversy.

SOC 330 - Social Psychology

T/TH; 9:25 a.m. to 10:50 a.m.
Room 113 CWH
Instructor: Dr. Tim Gongaware

Social psychology from a sociological perspective. Primary attention is given to social behavior and communication patterns in terms of their genesis and change in the context of social groups and social relationships.

Prerequisite: SOC 110 or 120 or 200 or ANT 101 or PSY 100.

SOC 323 Corrections and Penology

M/W; 2:15 p.m. to 3:40 p.m.
Room 113 CWH
Instructor: Dr. Nicholas Bakken



This course provides an interdisciplinary review of criminal punishment and correctional systems in the U.S. We will examine the prevailing punishment philosophies in the U.S., such as deterrence, incapacitation, retribution and rehabilitation. Both institutional and community-based approaches to corrections are covered and particular attention is devoted to understanding the social context of current practices, the nature of correctional populations, and the management of correctional systems. Additionally, current correctional practices and policies will be examined from an evidence-based perspective.

Prerequisite: SOC 110 or 120 or ANT 101.

SOC 390 - Early Sociological Theory

T/Th; 2:15 p.m. to 3:40 p.m.
Room 340 CWH
Instructor: Dr. Michael Brennan

Critical survey of scholars who contributed to the rise of scientific sociology, focusing on the historical circumstances, the personalities and the ideas of the prominent early sociologists prior to the mid-20th century. Particular attention is given to August Comte, Herbert Spencer, Karl Marx, Emile Durkheim, Max Weber, George Herbert Mead and C. Wright Mills.

Prerequisite: SOC 200.

SOC 395 - Contemporary Sociological Theory

M/W/F; 9:55 a.m. to 10:50 a.m.
Room 340 CWH
Instructor: Dr. Bill Zollweg

Modern sociological theories at the macro- and micro-levels are summarized, compared and applied. Macro-level theories include social evolution, general systems, functionalist, and social conflict theories. Micro-level theories include interaction, self, role, phenomenological, exchange, rational choice, and interaction ritual theories. The linkage of micro- and macro-level theory in sociology is addressed in network and organizational theories. Selected concepts and perspectives are applied in sociological practice projects.

Prerequisite: SOC 200.



SOC 414 Policy & Society

M/W/F; 12:05 p.m. to 1:00 p.m.

Room 113 CWH

Instructor: Dr. Carol Miller



Planning on a career in social services or hoping to get a job in a government agency? Just interested in the social, economic and political factors that led to the development of social policy in the U.S.? Want to know how Social Security, Temporary Assistance to Needy Families and the most recent Farm Bill affect families, women, the aging, children, communities, your dinner table and more? Ever wonder how U.S. policies compare to similar policies in other countries? If you answered "Yes" to just ONE of these questions, you should sign up for Policy & Society.

Prerequisite: SOC 110 or 120 or ANT 101 or SOC/ANT 202.
Junior standing recommended.

SOC 429 - Sociology of Deviance

M/W/F; 11:00 a.m. to 11:55 a.m.

Room 338 CWH

Instructor: Professor Tim Thornton



This course provides an overview of the sociological study of deviance. Various definitions of deviance are examined within the context of individuals, behaviors, and groups who are considered deviant as well

as those who apply the deviant labels. The course explores a variety of theoretical perspectives of deviance and social control in order to better understand the social construction of deviance, the enforcement of social norms, and the social control systems that are established to respond to deviance. A variety of forms of deviance are covered, including: mental illness, drug and alcohol use, sexual deviance, and suicide.

Prerequisite: SOC 110 or 120 or ANT 101.

ANT/SOC 307 - International Development and Culture Change

T/TH; 12:40 p.m. to 2:05 p.m.

Room 340 CWH

Instructor: Dr. Christine Hippert

This course provides students with an overview of socio-cultural theories of international development and culture change. The course examines the cultural construction of "development" as a product of the colonial era, the Cold War, and what has been called the neoliberal global economy. The goal of the course is to provide students with a comprehensive study of the strengths and limitations of contemporary development theory and method in



ANT/SOC 307 - International Development and Culture Change – Cont.

anthropology and sociology, including such topics as conservation and the environment, indigenous peoples, gender and development, and the role of social movements and non-governmental organizations in the development process. (Cross-listed with SOC; may only earn credit in ANT or SOC.)

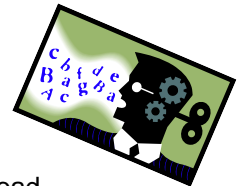
Prerequisite: ANT 101 or ANT/SOC 202 or SOC 110 or 120.

ANT 350 Language and Culture

T/Th; 2:15 p.m. to 3:40 p.m.

Room 338 CWH

Instructor: Dr. Susannah Lloyd



Language & Culture explores human communication+ language through a broad evolutionary and culturally comparative framework. Course topics include: a) non-language communication, critical to us and other critters, b) research on possible language capacities in non-human animals (apes, dolphins, etc.) and the implications of such studies, c) evolutionary developments of both brain + vocal tract supporting language in humans, d) language development in infants/children (*and* consideration of language-deprived children), e) consideration of Deaf Culture and the role of Sign and other languages for the Deaf, f) language as a social + political tool for persuasion, manipulation, and the shaping of reality, g) the emergence of writing and other forms of communication across deep time and space, h) the culture history of English and ongoing changes in the context of contemporary culture, and i) supplementary forms of symbolic communication---especially art, music, and dance.

ANT/SOC 360 - Catastrophe and Human Societies

M/W; 2:15 p.m. to 3:40 p.m.

Room 340 CWH

Instructor: Dr. Susannah Lloyd

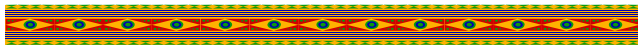


Catastrophic events have been common over human and planetary history. ANT/SOC 360 addresses such dramatic upheavals---both natural + human-engineered---across time and cultures, exploring : a) the resulting human + environmental effects to which societies must adapt, b) cultural attempts to create meaning from these events, and c) ways in which major disasters redefine/reinterpret the character and future history of each damaged, even endangered culture. Though study cases include pre-human ("near-misses for life") planetary disasters such as major asteroid strikes, the focus is the human experience of weather, fire, and volcanic cataclysms, plagues and

ANT/SOC 360 - Catastrophe and Human Societies – Cont.

associated population crashes, technological and environmental catastrophes, and war, terrorism, and bio-terrorism. Attention also will be paid to individual, public policy/governmental, and aid agency responses to specific disasters---as well as the development of speculative responses to anticipated and even imaginary dangers. (Cross-listed; may only earn credit in SOC or ANT.)

Prerequisite: SOC 110 or 120 or 200 or ANT 101.



ANT 454 Historical and Theoretical Approaches in Anthropology

T/TH; 9:25 a.m. to 10:50 a.m.
Room 340 CWH
Instructor: Dr. Christine Hippert

This course examines the history of anthropological thought since the beginning of the discipline. The course will specifically look at theories and theorists in a historical perspective, demonstrating the ways that social events and cultural forces have helped shape theoretical and methodological paradigm shifts throughout the history of the discipline. Students will also be required to analyze ethnographies as cultural artifacts by examining the strategies anthropologists use to represent cultures in the ethnographies that they produce.

Prerequisite: ANT 101 and ANT 202, junior standing.

ARC/HIS 275 - Ancient Britain and Ireland

T/Th; 11:00 a.m. to 12:25 p.m.
Room 312 CWH
Instructor: Dr. Joe Tiffany



Exploration of the fascinating archaeological heritage of the British Isles and Ireland from the earliest Stone Age inhabitants to the end of the Roman Occupation. (Cross-listed with HIS; may only earn credit in ARC or HIS.)

Prerequisite: ARC 200 or ARC/HIS 204 recommended.



ARC 280 - Archaeology of the Andes

T/Th; 12:40 p.m. to 2:05 p.m.
Room 312 CWH
Instructor: Dr. Tim McAndrews

This course reviews the prehistory and early historic periods of the Andean regions of South America. Emphasis will be placed on tracing the rise of civilization in the Andes which culminated in the Inca



ARC 280 - Archaeology of the Andes – Cont.

Empire and the extraordinary events that led to the conquest of the Inca by the Spanish conquistadors. Topics to be explored include the controversial evidence of early man in South America, the role of the ocean and mountains in shaping pre-hispanic life, the origin of domesticated plants and animals, and the rise of the complex societies of Moche, Tiwanaku, Wari, Chimu, and of course, the Inca.

ARC/HIS 295 Egyptian Archaeology

M/W; 2:15 p.m. to 3:40 p.m.
Room 212 CWH
Instructor: Dr. Dave Anderson



This course is a survey of the archaeology of Ancient Egyptian civilization from an anthropological perspective and examines the Neolithic through Roman periods, ca. 500 B.C.-

A.D. 285. In the course, we will investigate the rise and development of Egyptian culture by examining selected archaeological sites and the material remains left behind by the ancient Egyptians. Using these materials, we will address specific topics of Ancient Egyptian civilization including the formation of the centralized state, of women in society, everyday life, history of Egyptian archaeology, recent discoveries, and future directions in the archaeology of Egypt. (Cross-listed with HIS; may only earn credit in ARC or HIS.)



ARC 403 Archaeology Lab Methods

T/TH; 3:45 p.m. to 5:15 p.m.
Room 312 CWH
Dr. Connie Arzigian

Taking a hands-on approach to analyzing and interpreting archaeological remains, the class will integrate lectures with demonstrations, experiments, and supervised laboratory projects. Study will focus on the potential for interpreting human life ways and **ARC 403 Archaeology Lab Methods - continued** adaptations to the environment from stone tools, ceramics, floral, and faunal remains.

Prerequisites: ARC 195 and admitted to major.



ARC 334 - Bones for the Archaeologist: Human Skeletal Anatomy and the Anthropological Study of the Dead

T/Th; 9:25 a.m. to 10:50 a.m.
Room 312 CWH
Instructor: Professor Jon Baker



This course is designed for students majoring in Archaeological Studies or related fields. The focus of this course is a detailed study of the human skeleton. Each student will be required to learn the anatomy of the human skeleton in detail. Also considered are methods of determining an individual's age, ethnic origins, sex, and stature from skeletal remains. The final three weeks of the course will be concerned with anthropological interpretation of the dead.

Summer 2012 - Session I

SOC 212 Marriage and Family
May 21 – June 8, 2012 – Three Weeks
On Line
Instructor: Dr. Carol Miller



An investigation into the many facets of love and how marriage and family experiences typically alter the nature of marital intimacy. The social construction of our sexual identities is also explored as well as the significance of this process to our quality of life. The major course emphasis is given to understanding the contemporary institutions of marriage and family, and the changes that these institutions are now experiencing.

←+++++→
SOC 225 – Racial and Ethnic Minorities
May 21 – June 8, 2012 – Three Weeks
Classroom information to be announced
Instructor: Dr. Vincent Her



An investigation into the social dynamics shaping racial and ethnic minority experience in America. Processes of prejudice formation and prejudice reduction are discussed. The nature of institutional discrimination and institutional racism is analyzed in proper socio-historical context. Minority group achievements and legacies are emphasized. Contemporary issues and assessment of minority group progress in America are vigorously examined.

SOC 323 Corrections and Penology
May 21 – June 15, 2012 – Four Weeks
On Line
Instructor: Dr. Nicholas Bakken



This course provides an interdisciplinary review of criminal punishment and correctional systems in the U.S. We will examine the prevailing

SOC 323 Corrections and Penology – Cont.
punishment philosophies in the U.S., such as deterrence, incapacitation, retribution and rehabilitation. Both institutional and community-based approaches to corrections are covered and particular attention is devoted to understanding the social context of current practices, the nature of correctional populations, and the management of correctional systems. Additionally, current correctional practices and policies will be examined from an evidence-based perspective.

Prerequisite: SOC 110 or 120 or ANT 101



ANT 266 – Anthropology of Food
May 21 – June 8, 2012 – Three weeks
On Line
Instructor: Dr. Christine Hippert



Cross-cultural practices and beliefs about the production, consumption, and distribution of food vary widely. This course examines food in a historical, social and cultural context, focusing on the topics such as subsistence patterns and cultural patterns of food preparation and consumption; contemporary diets and the increasing prevalence of obesity, diabetes, and heart disease; cultural practices that restrict food intake or dictate food taboos; the globalization and “McDonaldization” of food; and others. The goal of the course is to provide students with theoretical and methodological tools to analyze food as a symbolic, political, and cultural artifact in today's world.

Prerequisite: ANT 101 or SOC 110 or 120 or SOC/ANT 202.

Summer 2012 - Session II

SOC 330 - Social Psychology
June 18 – July 20, 2012 – Five Weeks
On Line
Instructor: Dr. Tim Gongaware

Social psychology from a sociological perspective. Primary attention is given to social behavior and communication patterns in terms of their genesis and change in the context of social groups and social relationships.

Prerequisite: SOC 110 or 120 or 200 or ANT 101 or PSY 100.

SOC 326 - Sociopharmacology

June 18 – July 6, 2012 – Three Weeks
Classroom information to be announced
Instructor: Dr. Bill Zollweg



The course examines the current and historical cultural patterns of drug use in society. The emphasis will be on understanding the sequence of initiation, use, misuse, and addiction of psychoactive drugs in society. Special attention is given as to how the addicted brain functions, which contributes to many life course problems.

The course involves an investigation of the social problem aspect of drugs in society. How are drugs, as social problems, defined and made salient in the public imagination? How does society choose which drugs to treat as social problems? The course examines the laws and public policies intended to solve the social problem of drugs. What are the potential versus real life effects of current laws and policies intended to curb drug use among the population?

The course offers a review of the many treatment and prevention approaches currently used in society. What are the treatment and prevention strategies used today? What kinds of programs are successful and why?

Prerequisite: SOC 110 or 120 or ANT 101

ARC/ANT/HIS 353 - Maya Civilization

June 18 – July 20, 2012 – Five Weeks
On Line
Instructor: Dr. Tim McAndrews

The course presents an overview of the Maya culture located in southern Mexico and Central America. The class is organized chronologically into several sections that focus on the origins, adaptations to various environments, social, political, and religious organizations, and the belief systems of the Maya beginning at around 3000 B.C. Emphasis will be on Pre-Hispanic Maya; will also explore life ways of contemporary Maya people. (Cross-listed with ANT and HIS; may only earn credit in ARC, ANT, or HIS.)

Faculty Publications, Conference Presentations & Awards

Gedicks, Al , “Resisting Resource Colonization in the Lake Superior Region,” in *Z Magazine*, 24:9 (September 2011).

Gunter, W., Kurtz, S., **Bakken, N.**, & O’Connell, D. “Desisting from prescription drug abuse: An application of growth models to Rx opioid users,” *Journal of Drug Issues*, forthcoming.

Gunter, W., **Bakken, N.**, Kurtz, S., & O’Connell, D. (2011). “Nonmedical prescription opioid use: Gender differences in growth models of desistance.” Paper presented at the American Sociological Association, Las Vegas, Nevada

Hippert, Christine (2011). “Women’s Spaces, Gender Mainstreaming, and Development Priorities: Popular Participation as Gendered Work in Rural Bolivia,” *Women’s Studies International Forum* (34): 498-508.

Miller, Carol, (2011) “Got Milk? Food Insecurity in a Dairyland Community,” *Journal of Hunger & Environmental Nutrition*, 6:343-352.

Christine Hippert presented a paper at the Annual Meetings of the North Central Council of Latin Americanists in Milwaukee, WI on Sept. 30, 2011: “Negotiating Development, Negotiating the Self: Constructing Local and Global Identities in the Pirwa.”

The La Crosse County Public Health Department has awarded Christine Hippert a sub-contract to supervise UWL students who will interview people involved in the Farm 2 School project in the La Crosse school system. This project will be carried out during the 2011-2012 academic year. If you’re interested in participating in the project, please contact Dr. Hippert (chippert@uwlax.edu).

UWL Student Paper Award Winners & Conference Presentations

Patrick Carthey (graduated in Spring 2011, Anthropology Minor/English major) will be presenting a paper at the Annual Meetings of the American Anthropological Association in Montreal, Quebec in November. The title of his paper is, “House of the People: Worker Solidarity in the Neighborhoods of Cochabamba, Bolivia.” The paper presents the results and analysis of his ethnographic research in Bolivia that he conducted during the Ethnographic Field School in Bolivia in Summer 2009.

**UWL Student Paper Award Winners &
Conference Presentations - Continued**

Two students submitted their papers to the Wisconsin Sociological Association Undergraduate Student Paper Competition and both won:

Ethan Rogers won FIRST place and **Molly Boss** won SECOND place out of all papers that were submitted from students from around the state.

Five sociology students presented their research at the Joint Annual Conference of the Wisconsin Sociological Association and Wisconsin Political Science Association at UW-La Crosse on October 14, 2011

Molly Boss: "The Importance of 'My Wife and Kids' to the Desistance Process"

Ashley Holen: "Attitudes Towards Homosexuality in Galway, Ireland"

Ethan Rogers: "Substance Use and Risky Sexual Behavior among High School Students: A Partial Test of the Ecological Risk Factor Model"

Andrea Turtenwald: "Physical Intimacy and Equity in the Maintenance of College Students' Romantic Relationships"

Brad Wintersteen: "Socioreligious Groups: A Study of Religious Tensions in Central India"

*****See information below on Dominican Republic Alternative Spring Break*****

ALTERNATIVE SPRING BREAK IN THE DOMINICAN REPUBLIC!!

March 10-18, 2012

(1 credit: ANT 399 or INS 360)

This trip focuses on working with local people to learn more about the social, cultural, environmental, and economic changes to life in the Dominican Republic from the era of colonization to the present.



Students will participate in a number of excursions and service learning activities, including:

- Working on an organic farm
- Participating in a local reforestation project
- Touring historic and contemporary coffee and sugar plantations
- Sight-seeing in the capital, Santo Domingo (i.e., historic home of Columbus, national anthropology museum, the national cathedral, etc.)
- Visiting national parks by land and sea (including swimming in the Caribbean)



Approximate total trip cost: \$2700 (Financial Aid Available)

Application deadline: December 1, 2011 (the application is found in an envelope on Dr. Hippert's office door)

Interested? Contact: Dr. Christine Hippert (chippert@uwlax.edu)
Dept. of Sociology and Archaeology