

UW-L
ME-PD PROGRAM

ME-PD
PROGRAM

(608) 785-8142

WWW.UWLAX.EDU/MEPD

260 MORRIS HALL
1725 STATE ST
LA CROSSE, WI
54601

INSIDE
THIS ISSUE:

Director's Welcome	1
ME-PD Staff & Schedules	1
Current Enrollments	1
New Seminar Paper Info	2
Course Offerings	2
Board of Review Dates	3
Comp. Exam Dates	3
Praxis II Test Info	3
New Grad Asst Search	4

ME-PD Newsletter

FALL 2007

TUESDAY, SEPTEMBER 4

Welcome Back, ME-PD Students!



Dr. Rhonda M. Rabbitt, EdD
Interim Director, ME-PD

While my title may be new, my involvement within the University of Wisconsin-La Crosse and the ME-PD department is not. I have held various roles within the UWL system for the past ten years,

most recently within the Leadership Team of the ME-PD Learning Community Program. I have also served as DES instructor and Spanish instructor on campus. My first teaching career was as a high school Spanish teacher. Prior to that time, I was—like you—enrolled on-campus as an ME-PD student. I am excited for the upcoming year and hope to assist you in your educational journey.

To that end, I am hosting a “Meet and Greet” night for all ME-PD Professional Development and Initial Certification Track graduate students. This will be a great way to meet the ME-PD staff, locate our offices, and get to know your peer students!

Chances for success are increased with strong relationship, so let’s get to know each other!

We will also coincide this event with an Comprehensive Exam Informational Meeting for your convenience.

Fall 2007
ME-PD Meet & Greet
Thursday, September 13
4:00—6:00
277 Morris Hall

Snacks and beverages will be provided, any questions you have will be answered, and introductions to fellow students made! We look forward to seeing you there.

ME-PD Office Staff & Fall Schedules

Margie Hylkema

Assistant to the ME-PD Director
268 Morris Hall
8:00-4:30 Monday—Friday

Margie works primarily with the ME-PD Learning Community track. Margie can help with learning community information and with help connecting with Dr. Rabbitt.

Meaghan Gustafson

ME-PD Graduate Assistant
271 Morris Hall
12:00-5:00 Tuesday & Thursday
Other hours TBA

Meaghan works with on-campus ME-PD students in both the Initial Certification and Professional Development tracks to help with coursework planning, the Board of Review process, and general grad student advising issues.



UW-L is listed No. 3 in the Midwest among public universities offering master's degrees and No. 22 among all public and private institutions that offer master's programs. The university has appeared on the U.S. News list each of the past 10 years and has been among the top three since 2002.

Among the criteria against which schools were judged are acceptance and retention rates, academic reputation, and academic qualifications of incoming students.

Current ME-PD Enrollment

As we begin the Fall 2007 semester, there are 37 active Initial Certification students at all stages and at all levels of teacher certification.

Within the past several months, ME-PD has instituted a rolling admissions policy, so the cohort of Initial Certification students beginning their programs this fall is larger than it has been in previous years.

We welcome all our new Initial Certification students

and wish them luck in their first semester.

Below is a breakdown of the new Initial Cert. students by Certification Area:

EC-MC (2)

MC-EA
Social Studies (1)
General Science (1)

EA-A
BFSS & History (1)
BFSS & Economics (1)
English (3)

Biology (1)
Math (1)

EC-A
Music- General (2)
Music- Choral (1)
Music- Choral/General (1)
Spanish & German (1)
Spanish & TESOL (1)
Art (2)

There are also 23 active Professional Development (Non-Certification) students, one of whom is starting their program this semester. Welcome and best wishes!

New Seminar Paper Information

Active teachers are being called upon to participate in action research at increasing rates.

Best practices of teaching call for research-based evidence to support the teaching process.

Doctoral study applications most often require a research paper submis-

sion. All of these reasons might cause you to consider choosing the seminar paper or thesis paper for your mandatory culminating project. More and more students have been inquiring about the seminar paper and thesis options for their culminating project.

What exactly is the difference between the two? Basically, depth of study and credit hours.

For more detailed information inquire the ME-PD office and/or visit our website (<http://www.uwlax.edu/mepd>).

UW-L School of Education

Did you know that the UW-L SOE started in 1909? The SOE website has been recently revised, and ME-PD encourages all its students to review it at <http://www.uwlax.edu/soe/> for important information not covered in your ME-PD orientation meetings. The new SOE website includes sections

about the History of the SOE and its mission statement, faculty and staff contact information, and student resources. Initial Certification students should pay special attention to important information about the Teacher Education Standards, Electronic Portfolios, and Clinical and Student

Teaching information.

You will also find information about current events and upcoming conferences, as well as links to the Wisconsin Department of Public Instruction and grant projects.

Please visit the SOE website today!

Board of Review Process Information & Dates



The Board of Review is a faculty committee whose purpose is to evaluate, approve and guide the programs for *all* ME-PD students. Prior to the completion of nine (9) graduate credits, ME-PD candidates must complete and submit a proposal packet to the Board of Review. The proposal must

include a list of chosen coursework, determination of a culminating project, and a professional statement.

Completing the documents and the Board of Review process is an essential component of the ME-PD program; students who neglect to participate will be blocked from registering and continued progress on their ME-PD degree.

Once the process is complete, students will have a

clear understanding of the specific requirements necessary for the ME-PD degree. The approved Board of Review Document is intended to act as a tool that will guide you through your course of study. All ME-PD Students were emailed the BoR forms and directions in early August.

Completed forms are due to Meaghan Gustafson in ME-PD by Friday, Sep 21.

Upon submission, Professional Development students must schedule a time to meet with the Board.

The Fall Board of Review Meetings are scheduled for Monday, October 8th and Thursday, October 11th.

Please contact Meaghan for assistance at 785-8142 or gustafso.meag@students.uwlax.edu.

Comprehensive Exam Information & Dates

The Comprehensive Exam is one of three Culminating Project options for all ME-PD Students.

Upon the completion of 30 graduate credits, ME-PD students are eligible to write the exam.

Students choose three faculty members to serve on their Comprehensive Exam Committee, and write two questions each based on course content. During the

four hour exam, students must write responses to four questions, including one from each Committee Member.

If you are considering taking the Comprehensive Exam during Fall 2007, please plan on attending the Fall 2007 ME-PD Meet & Greet on Thursday, September 13th between 4:00 and 6:00pm in 277 Morris. More information and registration

materials will be available at this event. If you are unable to attend, contact Meaghan Gustafson for an individual info/registration session at 785-8673 or 785-8142,

The Fall 2007 Comprehensive Exam will be held on **Saturday, October 20th** in Murphy Library.

The next opportunity to write the Comprehensive Exam will be **Saturday, March 29, 2008.**

Praxis II: Subject Assessment Tests

The Wisconsin Department of Public Instruction requires that all students completing a Wisconsin professional education licensure program take the specific Praxis II test that corresponds to the license they are working towards.

UW-L requires that students pass the Praxis II Exam prior to student teaching.

Please check the Educational Test-

ing Service website at www.ets.org/praxis for more information, including test lists and practice tests, registration information, and score reports. When registering, be sure to designate UW-L as a score recipient to ensure that your results are sent here.

Praxis II testing dates for the 2007-2008 academic year are as follows:

November 17, 2007

January 12, 2008

March 15, 2008

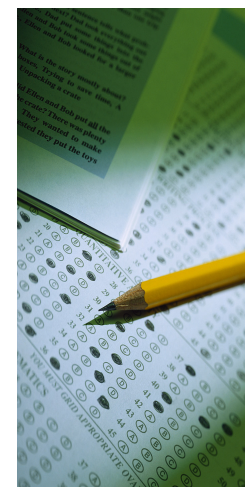
April 26, 2008

June 14, 2008

July 26, 2008

Register for the exams early, as space fills fast.

Contact Sandy Keller with questions about the Praxis II exams at 785-8123 or keller.sand@uwlax.edu.



**UW-L
ME-PD Program**

260 Morris Hall
1725 State Street
La Crosse, WI 54601
Phone: 608-785-8142
Fax: 608-785-6560
E-mail: mepd@uwlax.edu



The ME-PD program is founded on a history of improving the quality of education throughout the state of Wisconsin while remaining absolutely dedicated to meet the individual needs of its graduate students. Hundreds of ME-PD program graduates are delivering best practices in education for PreK-12 students within Wisconsin and the United States

The ME-PD program strives to develop within its graduates commitment to the teaching profession, profound respect for the dignity of all learners, and professional competencies that enable them to effective teachers and responsible citizens in a diverse and dynamic world.

Check out the Revised ME-PD Website!

After much effort, the updated ME-PD website will be up and running very shortly.

Please check out www.uwlax.edu/mepd and let us know what you think! We want to make the website as user-friendly for prospective and current ME-PD students as possible, so if you have suggestions or concerns, we'd love to hear them.

New ME-PD Graduate Assistant Search

ME-PD is looking for a new Graduate Assistant to begin work in the office in January 2008.

The ME-PD assistantship requires 20 hours of in-office work per week, under the direct supervision of the ME-PD Director, Rhonda M. Rabbitt.

Tasks vary based upon current projects, and may include data entry and management, student advising, and clerical work.

The ME-PD Graduate Assistant Job Description is available upon request; please stop by the ME-PD office if you would like to review it.

If you are interested in applying for the ME-PD Graduate Assistantship, please stop by 235 Morris Hall and get an application from Joey LaSarge.