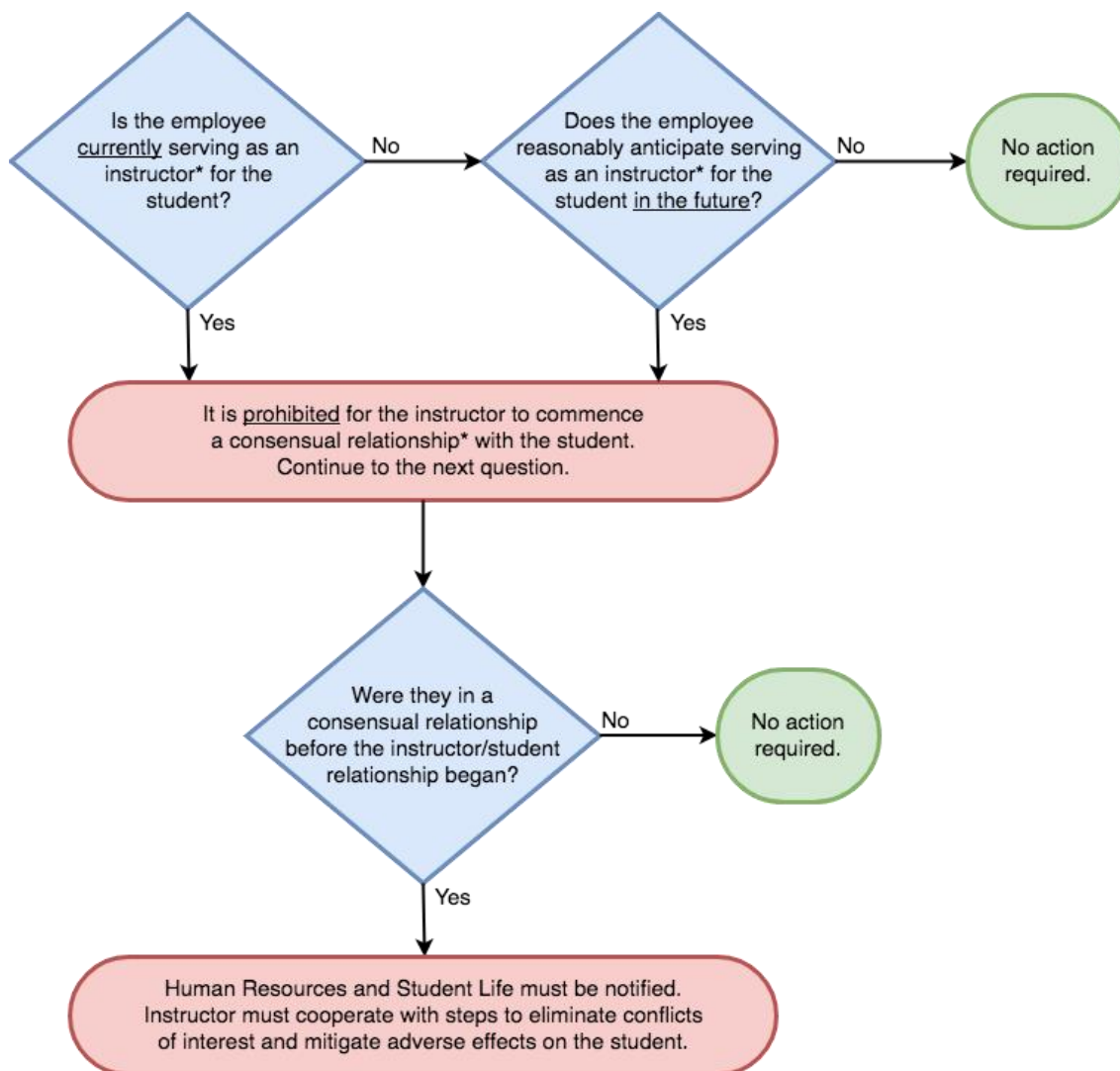


## University of Wisconsin-La Crosse Consensual Relationship Policy

### Appendix A: Flowchart for Instructor/Student Relationships



#### Policy Definitions

"Instructor" includes: academic instruction; advising; direct or indirect evaluation of a student's work; research collaboration or assistantships; coaching.

"Consensual Relationship" means any romantic, physically intimate, or sexual relationship, including marriage. Even if the consensual relationship ended before the instructor/student relationship began, a potential conflict of interest exists and must be reported.

Students are not subject to disciplinary action under this policy, unless they are also employees and violate a provision of this policy that applies to employees.