

## ASHLEY RISSE'S PRECEPTORSHIP



WASHINGTON OZAUKEE  
PUBLIC HEALTH DEPARTMENT

## Prevention Team Preceptee

### The health department is hard at work...

- We are alerted by the state of any positive cases within our counties
- Our staff begins the contact tracing process, that means we figure out when and where that person has been lately, and who else may be impacted
- The individual diagnosed will be extensively interviewed to determine all of their potential contacts
- All of those potential contacts are notified of their exposure and given recommendations on how they should move forward



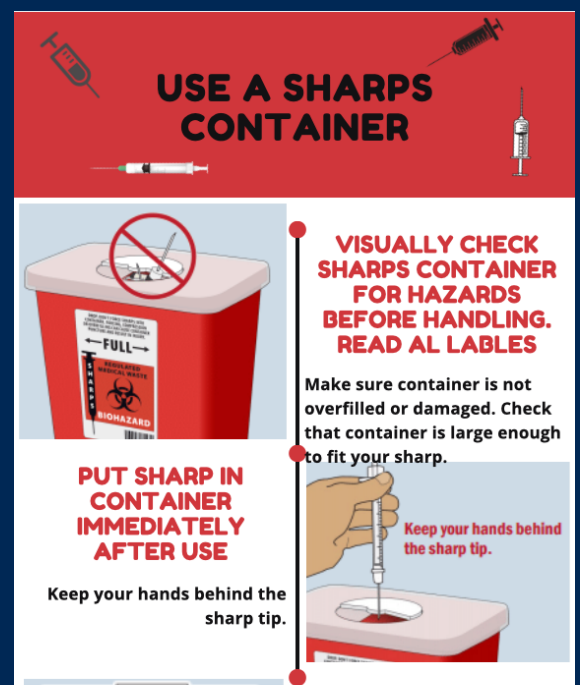
**53%** of Ozaukee County residents face food insecurity but do not qualify for FoodShare.

1 in 5 Wisconsin high schoolers use e-cigarettes.

Ozaukee County residents report experiencing **3.1** poor mental health days in the past 30 days.



The binge drinking rate in Washington County is **22-26%**.



## Community Health Improvement Plan

Join Washington County  
Public Health for a  
Community Conversation

*Join us to help identify health priorities in Washington County. Your voice matters!*

Tuesday, March 24th, 2020  
5:30-7:30 p.m.  
Jackson Community Center

Thursday, March 26th, 2020  
1:30-3:30 p.m.  
Jackson Community Center

Join Ozaukee County  
Public Health for a  
Community Conversation

*Join us to help identify health priorities in Ozaukee County. Your voice matters!*

Wednesday, March 18, 2020  
5:30-7:30 p.m.  
Ozaukee County Pavilion

Thursday, March 19, 2020  
1:30-3:30 p.m.  
Ozaukee County Pavilion

## COVID-19 QUARANTINE



- Healthy person
- Potentially exposed
- Staying home and away from others

## VERSUS

## ISOLATION



- Confirmed positive case
- Sick (even mild symptoms)
- Staying home and away from others