



## WINGS STUDENT CENTER

WINGS Student Center is an online system that you can use to complete the following tasks:

- View enrollment dates and appointments
- View financial aid award
- View transfer credit report
- Search for classes
- View class schedule/grades
- Register for classes
- View/pay bills online
- Add tower tender
- Update your address, phone and email
- Add emergency contact information

### HOW TO ACCESS WINGS STUDENT CENTER

1. Go to: [www.uwlax.edu](http://www.uwlax.edu)
2. Use the UW-L Quicklinks drop down menu at the top of the page and choose "WINGS."
3. Enter your username (student ID) and password. A username and password was sent to you by email when you applied for admission.

### TROUBLESHOOTING

If you have misplaced your password or WINGS login information, reset your information by visiting: <https://secure.uwlax.edu/password>

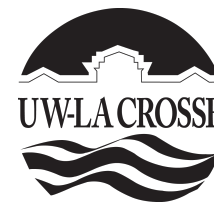
If you need further assistance accessing your WINGS Student Center, contact the Eagle Help Desk:

- Phone: 608.785.8774
- [www.uwlax.edu/itssupport/incomingstudent](http://www.uwlax.edu/itssupport/incomingstudent)

# UNIVERSITY of WISCONSIN LA CROSSE

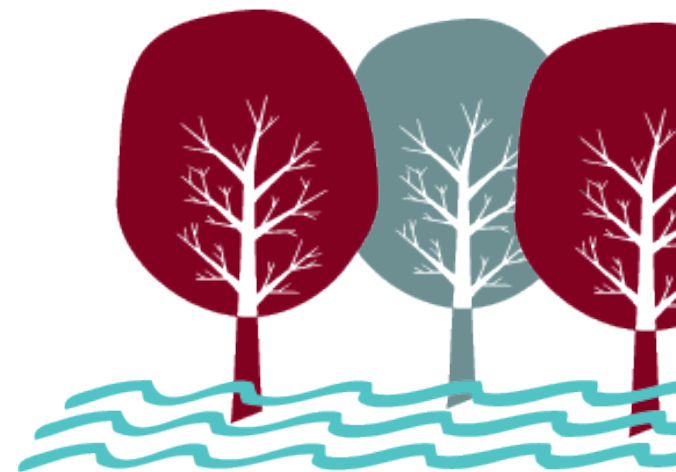
## CONTACT INFORMATION

CAMPUS RESOURCE	PHONE NUMBER
Advising Center	608.785.6950
Bookstore	608.785.8855
Cashier's Office	608.785.8719
Child Care Center	608.785.8813
College of Business Administration	608.785.8090
College of Liberal Studies	608.785.5454
College of Science & Health	608.785.8156
Counseling & Testing	608.785.8073
Eagle Help Desk	608.785.8774
Financial Aid	608.785.8604
Health Center	608.785.8558
Murphy Library	608.785.8505
Parking Office	608.785.8061
Records & Registration	608.785.8951
Residence Life	608.785.8075
Textbook Rental	608.785.8853
Tower Tender/ID Office	608.785.8891
Veterans/Military Service Members	608.785.8751



## Registration Technology Information FOR NEW STUDENTS

- WINGS Student Center overview
- Campus email access information
- Registration reminders
- Important websites for registration
- Contact information for campus offices



## ACCESS YOUR UW-L EMAIL ACCOUNT

### 1. Activate your NetID

- Visit [www.uwlax.edu/password](http://www.uwlax.edu/password) to activate your NetID.
- Your NetID is used to access most technology on campus, including email.

### 2. Log in to your email

- The first time you log in you may be asked to type in characters from a picture (captcha).
- It is not unusual for this to take a couple of tries as the characters are hard to read.

### When will you receive your email account?

You will be issued a UW-L email address *after* you are registered for classes. If you have been away from UW-L for more than one semester, a new email account is created the day after you register for classes.

### Reset Password

If you ever forget your password, need to reset your password or if your email and NetID passwords get out of sync, you can use the tools at [www.uwlax.edu/password](http://www.uwlax.edu/password) to reset or sync your password.

### Trouble logging in?

- For more specific access instructions, visit [www.uwlax.edu/eagleapps/setup.htm](http://www.uwlax.edu/eagleapps/setup.htm)
- If you are still experiencing issues after reviewing the above website, please contact the Eagle Help Desk at 608.785.8774.



## REGISTRATION REMINDERS

1. **View your Enrollment Date** (the first day you are eligible to register for classes) on your WINGS Student Center.
2. To find important dates and deadlines search for “**Academic Calendar**” on the UW-L homepage.
3. Registered students can have their photo taken for a **student ID card** in 223 Cartwright Center. For more information, visit [www.uwlax.edu/TowerOneCard](http://www.uwlax.edu/TowerOneCard).
4. A **student ID is required to obtain your list of books** for the classes you have registered for. Textbook Rental is located in the basement of Cartwright Center, right next to the University Bookstore. For more information, please visit: <http://www.uwlax.edu/textbookrental>.

## HOW TO ACCESS D2L

Desire2Learn (D2L) is used for online, blended, and many face-to-face courses for delivery of content, online discussions, to submit assignments, and for online quizzes and tests.

Students registered for the current term may access D2L via <http://www.uwlax.edu/d2l> using their NetID.

Questions about using D2L? Please call the Eagle Help Desk at 608.785.8774.

## IMPORTANT WEBSITES FOR REGISTRATION

### • Cashier’s Office

Fee and billing information, tax reporting information - <http://www.uwlax.edu/cashiers>

### • Undergraduate/Graduate catalog

Campus policy information & course descriptions - <http://www.uwlax.edu/records/catalogs.htm>

### • Minnesota Reciprocity

MN residents need to apply for reciprocity. <https://www.ohe.state.mn.us/ssl/reciprocity/apply1.cfm>

### • Records & Registration

Deadlines, graduation information, and transcript requests - <http://www.uwlax.edu/records>  
Registration/WINGS help information - <http://www.uwlax.edu/wings/help/index.htm>

### • Timetable Schedule of Classes

Information on courses offered, times, and instructors - <http://www.uwlax.edu/records/timetable>

### • Transfer Information System (TIS)

Information on how courses transfer among UW campuses and Wisconsin Technical Colleges - <http://www.uwsa.edu/tis>