A photograph of a laptop on a desk. The laptop screen shows the UW-La Crosse website, featuring a large red 'UW' logo and a navigation bar with the text 'WELCOMING ACTIVE DRIVEN ENGAGED'. A red mug with the UW-La Crosse logo is in the foreground on the left. A hand is visible at the bottom right, typing on the laptop keyboard. The entire image has a light red overlay.

2020-21
UW-LA CROSSE
GRADUATE STUDIES
ONLINE AND DISTANCE
STUDENT
RESOURCE GUIDE

TABLE OF CONTENTS

WELCOME TO UW-LA CROSSE

| | |
|--|-----|
| <u>GRADUATE STUDIES DIRECTOR WELCOME</u> | 3 |
| <u>VIRTUAL TOUR</u> | 4 |
| <u>CAMPUS RESOURCE OFFICES</u> | 5-6 |

GETTING STARTED AT UW-LA CROSSE

| | |
|--|----|
| <u>GETTING YOUR UWL STUDENT ID</u> | 8 |
| <u>COST TO ATTEND, HOW TO PAY</u> | 9 |
| <u>FINANCIAL AID</u> | 10 |

INFORMATION TECHNOLOGY SERVICES

| | |
|--|----|
| <u>WINGS</u> | 12 |
| <u>PASSWORD MANAGEMENT</u> | 13 |
| <u>VIRTUAL DESKTOP</u> | 14 |
| <u>EAGLE HELP DESK</u> | 15 |

ENROLLMENT PROCEDURES AND POLICIES

| | |
|---|----|
| <u>REGISTERING FOR CLASSES</u> | 17 |
| <u>COURSE LOAD REQUIREMENTS</u> | 18 |
| <u>ACADEMIC STANDING AND TIME TO DEGREE</u> | 19 |

CAMPUS RESOURCES FOR GRADUATE STUDENTS

| | |
|--|----|
| <u>DIVERSITY AND INCLUSION</u> | 21 |
| <u>GRADUATE STUDIES OFFICE</u> | 22 |
| <u>GET INVOLVED</u> | 23 |
| <u>MURPHY LIBRARY</u> | 24 |
| <u>WRITING CENTER</u> | 25 |
| <u>STATISTICAL CONSULTING CENTER</u> | 26 |
| <u>HEALTHCARE</u> | 27 |
| <u>COUNSELING & TESTING CENTER</u> | 28 |
| <u>CAREER SERVICES</u> | 29 |
| <u>THINGS TO DO “ON” CAMPUS</u> | 30 |
| <u>NEWS</u> | 31 |

DIRECTOR OF GRADUATE STUDIES WELCOME

-MEREDITH THOMSEN-

Greetings, online and other off-campus graduate students!

We are happy that you have chosen UW-La Crosse for the next step in your educational and professional journey. I know that many of you will never need to visit the campus in person. I hope this guide gives you a flavor of our institution, and helps you know that we are here to support you. We value your attendance and think of you as our students, as much as those on campus.

We are working to increase the number of ways in which we engage our online and other off-campus graduate students. The COVID-19 campus shutdown has increased faculty and staff appreciation for both the value and challenges of distance education. That has been a steep learning curve for some of us, but the payoff is that there is much broader understanding of the tools we can use to support online engagement. I suspect we will see more and more campus events offered in a hybrid format, and I look forward to promoting those to you in the coming year.

As graduate students, your first line of contact with the university will always be your Graduate Program Director. But please know that the Graduate Studies Office also stands ready to answer your questions and support you however we can.



Visit the Grad Studies Site for more
information

[Return to Table of Contents](#)

VIRTUAL TOUR



Even though you may never need to come to campus, it might be interesting for you to see what UW-La Crosse looks like. Admissions has a virtual tour for you to explore, which is linked below.

Virtual Tour

[Return to Table of Contents](#)

CAMPUS RESOURCE OFFICES

Academic Advising Center

(608) 785-6950
1140 Centennial Hall
E-mail: advising@uwlax.edu
<https://www.uwlax.edu/info/academic-advising/>

ACCESS Center

(608) 785-6900
165 Murphy Library
Email: ACCESSCenter@uwlax.edu
<https://www.uwlax.edu/access-center/>

Bookstore

(608) 785-8855
Student Union-First Floor
<http://www.uwlax.edu/bookstore/>

Career Services

(608) 785-8514
1140 Centennial Hall
<https://www.uwlax.edu/aaccs/>

Cashier's Office

(608) 785-8719
121 Graff Main Hall
<http://www.uwlax.edu/cashiers/>

Campus Climate

(608) 785-5094
1120 Centennial Hall
Email: campusclimate@uwlax.edu
<https://www.uwlax.edu/campus-climate/>

Counseling and Testing Center

(608) 785-8073
2106 Centennial Hall
<https://www.uwlax.edu/counseling-testing/>

Diversity and Inclusion

(608) 785-5097
205 Graff Main Hall
<https://www.uwlax.edu/diversity-inclusion/>

Eagle Help Desk

(608) 785-8774
103 Wing Technology Center
Email: helpdesk@uwlax.edu
<https://www.uwlax.edu/its/client-services-and-support/eagle-help-desk/>

Equity and Affirmative Action

(608) 785-8541
131 Graff Main Hall
Email: aad@uwlax.edu
<https://www.uwlax.edu/equity/>

Human Resources

(608) 785-8013
144 Graff Main Hall
Email: hrinfo@uwlax.edu
<https://www.uwlax.edu/human-resources/>

International Education and Engagement

(608) 785-8016
1209 Centennial Hall
Email: international@uwlax.edu
<https://www.uwlax.edu/international-education/>

Multicultural Student Services

(608) 785-8225
1101 Centennial Hall
Email: omss@uwlax.edu
<https://www.uwlax.edu/multicultural-student-services/>

Office for Financial Aid

(608) 785-8604
215 Graff Main Hall
Email: finaid@uwlax.edu
<https://www.uwlax.edu/finaid/>

Office of Graduate Studies

(608)-785-8124
223 Graff Main Hall
Email: gradstudies@uwlax.edu
<https://www.uwlax.edu/graduate-studies/>

[Return to Table of Contents](#)

CAMPUS RESOURCES

Pride Center

(608) 785-8887

2216 Student Union

Email: pridecenter@uwlax.edu

<https://www.uwlax.edu/pride-center/>

Records and Registration

(608) 785-8576

117 Graff Main Hall

Email: records@uwlax.edu

<http://www.uwlax.edu/records/>

Student Health Center

(608) 785-8558

Health Science Center, Suite 1030

Email: shcnetworking@uwlax.edu

<https://www.uwlax.edu/student-health-center/>

Student Life

(608) 785-8062

149 Graff Main Hall

Email: studentlife@uwlax.edu

<https://www.uwlax.edu/student-life/>

GETTING STARTED AT UWL



GETTING YOUR UWL STUDENT ID



This is the official identification card for all students. You may wish to have your UWL ID as part of your graduate school memorabilia—it may also get you a student discount! Photos for ID cards can be submitted online, and the ID Card Office will mail your ID to you if requested.

VISIT THE FOLLOWING FOR MORE INFORMATION

[Eagle ID Page](#)

[Return to Table of Contents](#)

COST TO ATTEND, HOW TO PAY



The Cashier's Office website is where you will find information about tuition, fees, billing, and deadlines. You can contact the Cashier's Office by calling 608-785-8719 or by emailing cashiers@uwlax.edu.

For more information about the costs of attending UWL, please check the link below.

VISIT THE FOLLOWING FOR MORE INFORMATION:

Cashier's Office

Cost of Attendance

[Return to Table of Contents](#)

FINANCIAL AID



Consider connecting with the Financial Aid office to discuss your financial needs as well as any funding options that might be available to you. Our specific Financial Aid consultant for graduate students is [Christina Hayes](#).

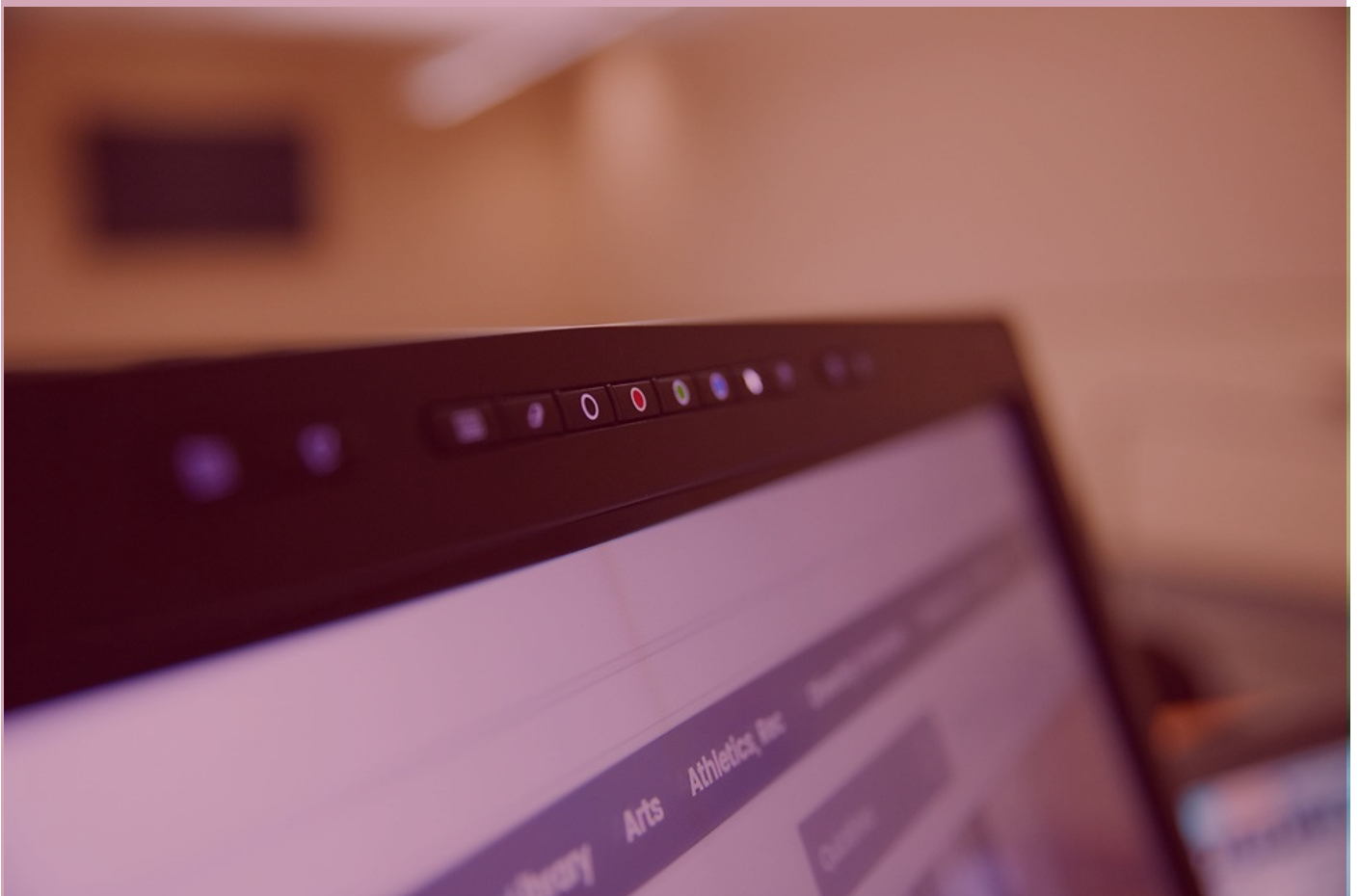
FAFSA

Advanced
Opportunity Program

Scholarship Resource
Center

[Return to Table of Contents](#)

INFORMATION TECHNOLOGY SERVICES



WINGS



WINGS is the UWL student information system. The software provides UWL students, faculty and staff with access to information related to recruiting and admissions, records and registration, financial, bill payments, and self-service options. See [Registering for Classes](#) for more information on that topic.

To Learn More Visit:

WINGS Help

[Return to Table of Contents](#)

PASSWORD MANAGEMENT



Whether you are new to campus and need to set up your password, your password has expired, or you happen to forget it, UWL's ITS offers an easy way to reset your password. Follow the link below.

[Password Management](#)

[Return to Table of Contents](#)

VIRTUAL DESKTOP



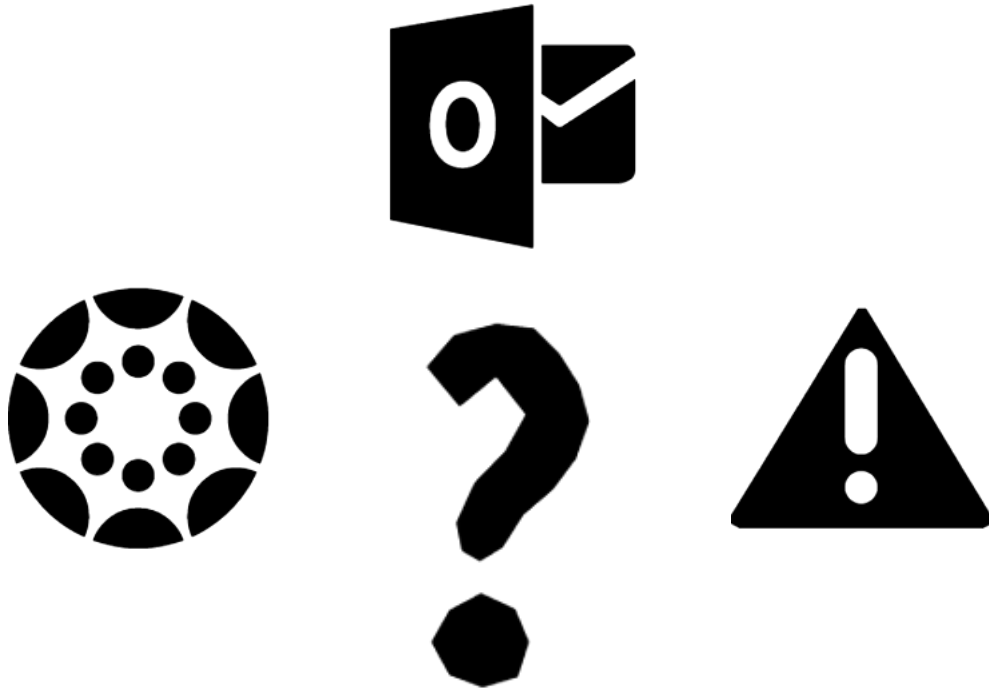
Virtual Desktop allows UWL students, faculty, and staff to access a Windows computer desktop from their own personal computers, either on campus or from another location. This virtual desktop looks similar to the ITS Computer Classrooms and Labs desktop. To use the virtual desktop you only need to download a small software program to your computer. Anything saved on the virtual desktop will be lost, so be sure to save it elsewhere.

Learn more about Virtual Desktop:

Virtual Desktop

[Return to Table of Contents](#)

EAGLE HELP DESK



Eagle Help Desk is dedicated to helping students and faculty with technology requests. They are located in Room 103 Wing Technology Center, or you can submit a [Web Help Desk Ticket](#).

Learn More Here:

Eagle Help Desk

[Return to Table of Contents](#)

ENROLLMENT PROCEDURES AND POLICIES



REGISTERING FOR CLASSES



Before registering for classes, reach out to your program director and/or advisor. Your enrollment date and time is located in your WINGS Student Center. There is a non-refundable registration fee. Students in UW Collaborative graduate programs will need to use permission numbers to enroll - reach out to your program director if you need help.

To Register for Classes:

1. Log on to WINGS with your NetID and Password
2. Go to the Student Center
3. Select “Enroll” under Academics

WINGS help

[Return to Table of Contents](#)

COURSE LOAD REQUIREMENTS



To receive financial aid as a graduate student, you must be registered for a minimum of 5 credits. You must be registered for 9 credits to be considered full-time. The recommended full-time load is 12 credits per semester. The maximum course load for graduate students is 15 credits per semester and 9 credits during a 12-week summer session. Please see your graduate program director for program-specific requirements.

For international students:

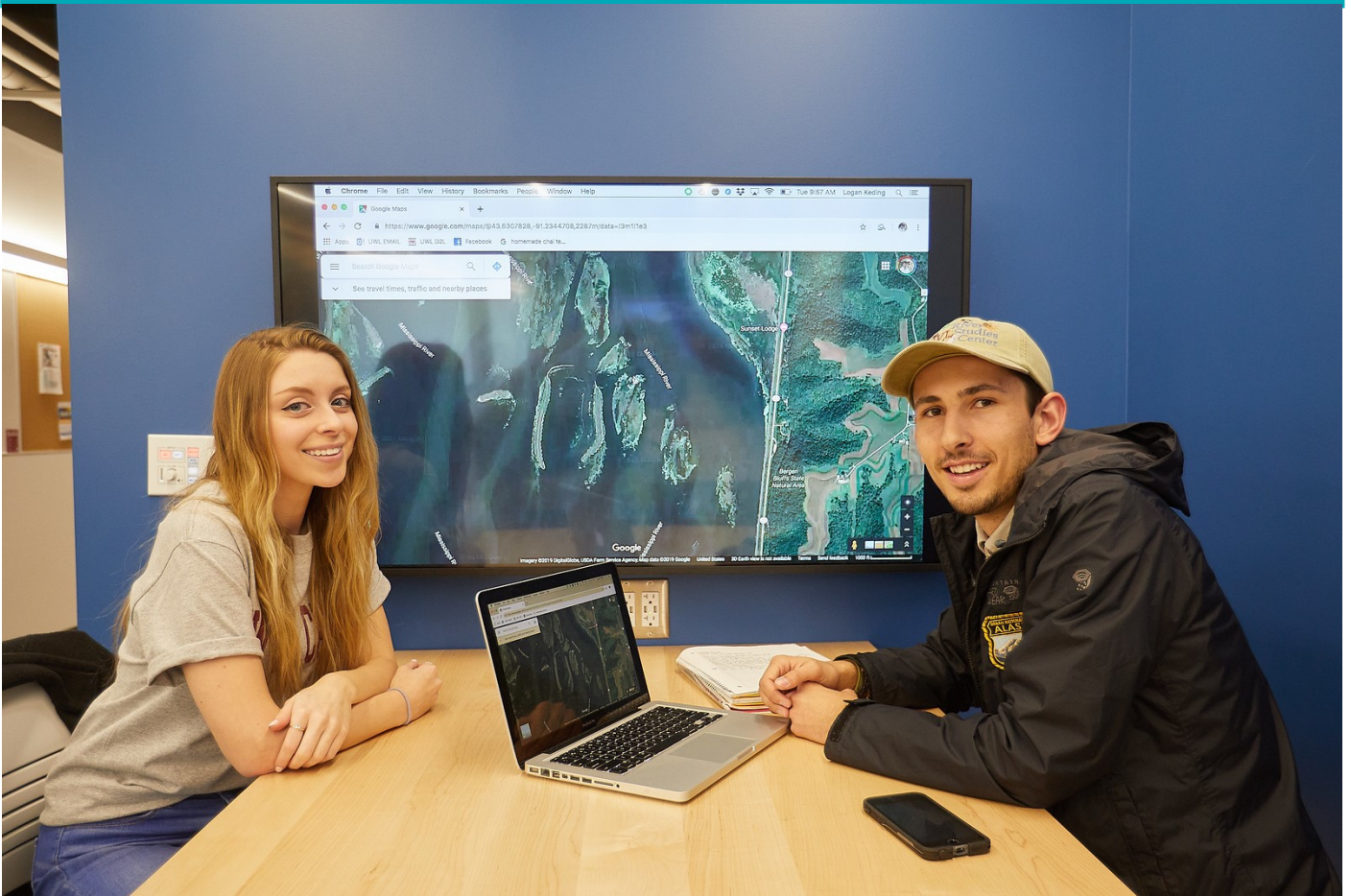
To maintain legal immigration status, international students must be enrolled full-time each semester for no less than 9 credits. Failure to maintain full-time status can result in the loss of F-1/J-1 student visa benefits.

For more information, check out the Graduate Catalog:

[Graduate Catalog](#)

[Return to Table of Contents](#)

ACADEMIC STANDING AND TIME TO DEGREE



To stay in good academic standing, graduate students must maintain at least a 3.0 cumulative grade point average. Any student receiving a D or F in a graduate course will be dismissed from graduate study. Dismissed students may petition with their graduate program for readmission.

Students must complete their degree within seven years of enrollment.

For more information, check out the Graduate Catalog.

[Graduate Catalog](#)

[Return to Table of Contents](#)

CAMPUS RESOURCES FOR GRADUATE STUDENTS



DIVERSITY AND INCLUSION



Through diversity, inclusion, and engagement, we can achieve Inclusive Excellence. UWL provides a wide range of resources and services related to diversity and inclusion

Learn More Here:

Diversity and
Inclusion Website

Diversity Resources

Student
Organizations

[Return to Table of Contents](#)

OFFICE OF GRADUATE STUDIES



The Office of Graduate Studies is dedicated to serving graduate students. We offer networking and educational events tailored to the needs of graduate students. We can answer questions about graduate policies. We also work with graduate students on thesis and dissertation editing and final approval.

See how the Graduate Studies Office can help you:

[Graduate Studies](#)

[Return to Table of Contents](#)

GET INVOLVED



Distance and online students are welcome to join the Graduate Student Organization, which provides an opportunity for students from different programs to meet and network, while also advocating for their own programs. You are also eligible to serve on one of several university committees which have seats for graduate students—check out the options

Get Involved

[Return to Table of Contents](#)

MURPHY LIBRARY

CAMPUS UPDATE

[COVID-19 Information & CARES Act Reporting] Working remotely and supporting your success - [More info](#)



[Future students](#) [Current students](#) [Community](#) [Alumni & friends](#) [Faculty & staff](#)

[Admissions](#) [Academics](#) [Murphy Library](#) [Events](#) [Athletics, Rec](#) [Diversity](#) [Campus Life](#) [A-Z directory](#)

☆ My UWL [Email](#) [Canvas](#) [WINGS](#) [Give](#) [Search](#)

PAGE MENU

- Welcome
- Our people
- Hours
- Help
- About the library
- Collections
- Technology

CONTACT US

- 608.785.8505
- 130 Murphy Library
- libraryoffice@uwlax.edu
- Operational status

HOME > MURPHY LIBRARY
Murphy Library

Search
Find books, articles and more! Search@UW

Ask us

- Chat
- Phone
- Email
- Schedule a Research Consultation
- My accounts / book renewal
- Request library instruction

Information Literacy Online Resources

more info>>>

Murphy Library is a graduate student’s resource for research projects or a quiet space to study. The library offers online databases that students can utilize for their projects and research. The library offers many services such as borrowing, resource sharing, interlibrary loans, and course reserves. For more detailed information on the library and information about how to access resources from off campus, check out the links below.

Learn More Here:

[Murphy Library](#)

[Off-campus access](#)

[Return to Table of Contents](#)

WRITING CENTER



The UWL Writing Center accepts digital submissions so it is easy to use their services as an online or distance graduate student. Visit their website to learn about the submission process and the type of feedback you can expect from a tutor.

Learn More Here:

[Writing Center](#)

[Return to Table of Contents](#)

STATISTICAL CONSULTING CENTER



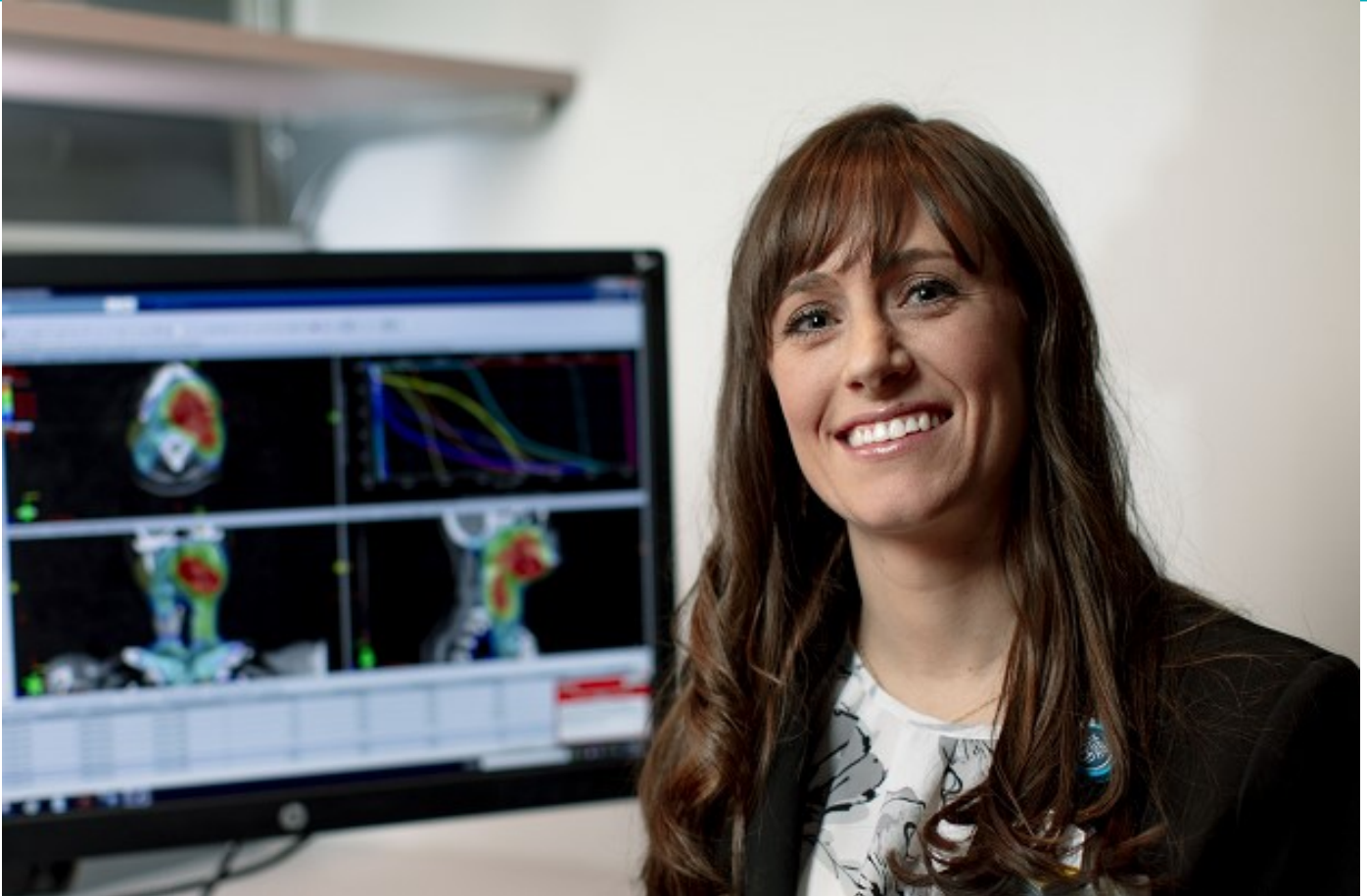
Several members of the Mathematics & Statistics Department and their students are available to help with statistical projects, including sampling and experimental design, data analysis, and interpretation of statistical results.

Learn More Here:

Statistical Consulting
Center

[Return to Table of Contents](#)

HEALTHCARE



The Student Health Center at UWL can provide telemedicine services to students physically located in Wisconsin, Minnesota or Iowa, due to licensure requirements. If you are interested in finding out if the Student Health Center can serve you, contact them using the information on the website linked below.

Student Group Health Insurance plans are not available for students who are located off campus. Students completing a clinical internship as part of their online graduate degree are required to purchase their own health insurance to cover medical expenses while enrolled in a clinical internship.

[Student Health Center](#)

[Return to Table of Contents](#)

COUNSELING & TESTING CENTER



Graduate school puts unique pressure on you as a student, particularly if you are balancing work and school at the same time. The Counseling & Testing Center provides counseling services to all students, although an extra fee may pertain to students in online programs. Contact them to learn more.

Learn more here:

Counseling & Testing
Center

[Return to Table of Contents](#)

CAREER SERVICES



UWL Career Services provides resources to students looking for part-time jobs or searching for their post-professional degree career such as resume reviews, interview preparation, finding careers, and more.

Handshake is UWL's online career services management system that provides students access to job, internships, and other career resources.

Learn More Here:

[Handshake](#)

[Career Services](#)

[Return to Table of Contents](#)

THINGS TO DO “ON” CAMPUS



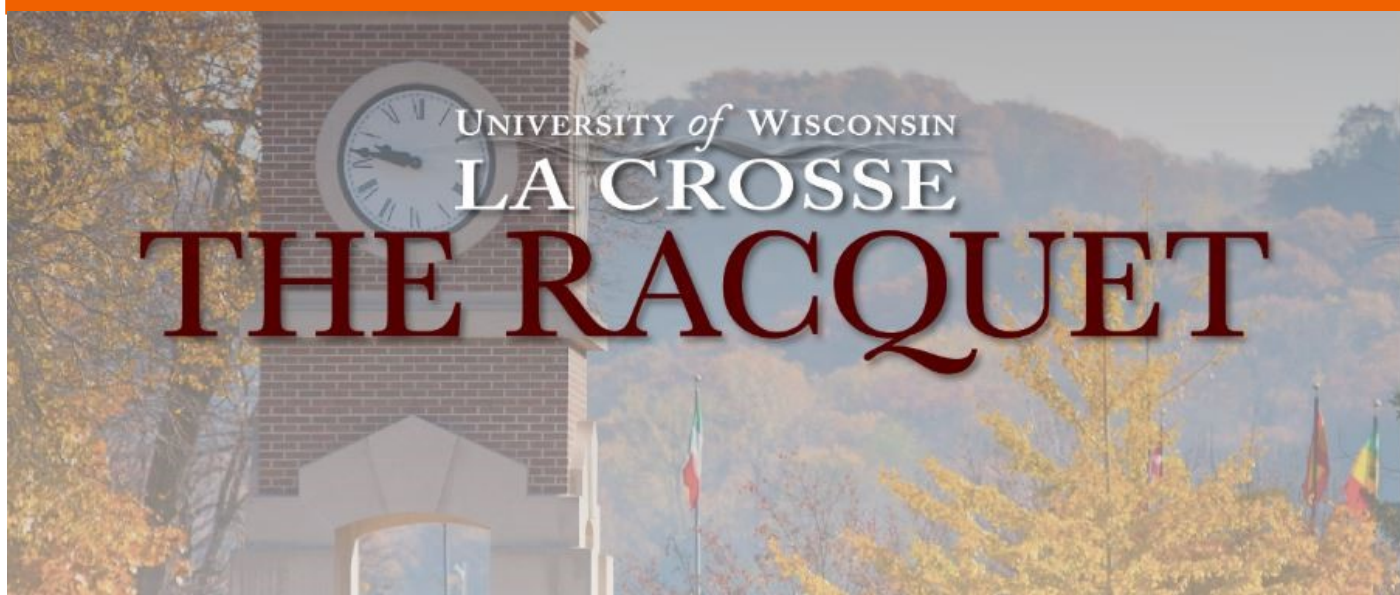
While plans are still in development for how much will happen on campus during the 2020-21 academic year, we are confident that we will see greater attention paid to providing online access for events. Check out the campus calendar and watch for email from the Graduate Studies Office about online events to engage with.

Learn More Here:

Campus calendar

[Return to Table of Contents](#)

NEWS



UWL has a graduate newsletter with a focus on graduate student relevant information, workshops, and events as well as spotlights on graduate students across disciplines. UWL also has a student run newsletter called The Racquet that covers campus news and a newsletter for Alumni called The Lantern.

Graduate Newsletter

The Lantern

The Racquet