

Clinical Rotations

UW-La Crosse

Gundersen

Mayo

Physician Assistant Program

Welcome!!!



An Overview of the Clinical Rotations

- This short presentation will give you an overview of the structure of the clinical year of the program.
- Please feel free to ask the faculty or current students if you have any questions!

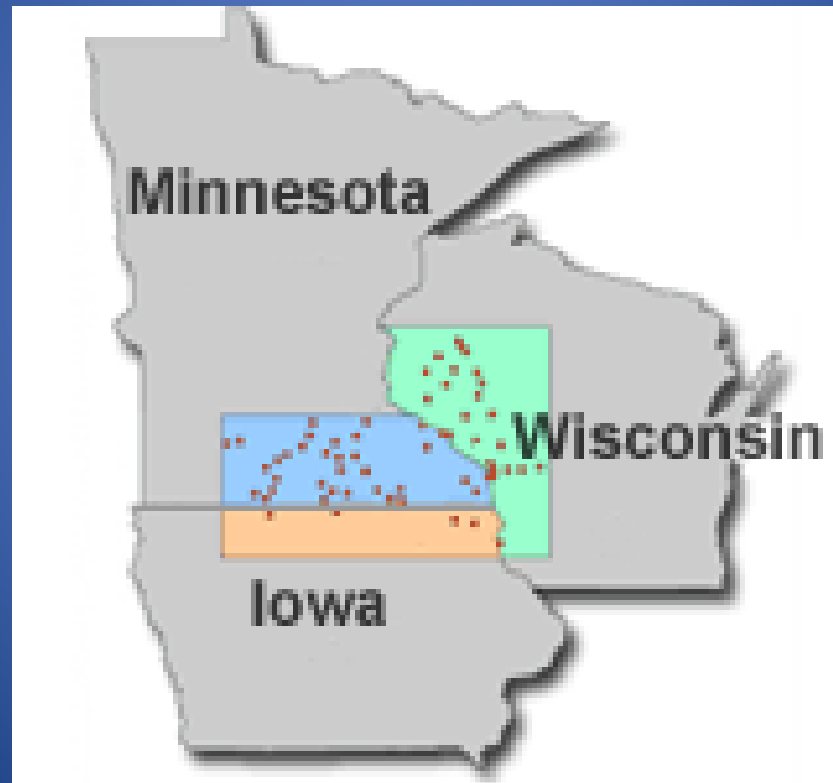
Where will my rotations be completed?

- Most rotations will be completed at either the Gundersen Health Care System or the Mayo Health Care System.

Gundersen Health System Sites



Mayo Clinic Health System Sites



Will I be assigned to one system?

- Yes! We draw names out of a hat near the beginning of your first year. When your name is selected, we ask you if you would like to be placed in the Gundersen System or the Mayo System.
- There are 7 positions at Gundersen and 12 at Mayo.



Will I get assigned to the system I want?

- It is very unusual for a student to NOT get assigned to the system that they want.
- We draw names out of a hat to give everyone an opportunity to have a fair chance.
- Some years we have more students interested in Gundersen and other years we have more students interested in Mayo.
- We guarantee you will get a good education at either system!!

Do I have to find my own rotations?

- No! This is handled by the clinical coordinator in conjunction with faculty and staff from Gundersen and Mayo.
- We forbid students to arrange their own rotations.

How many rotations do I complete?

- Each student completes eleven rotations

11

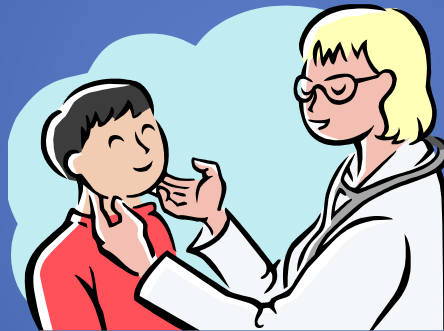
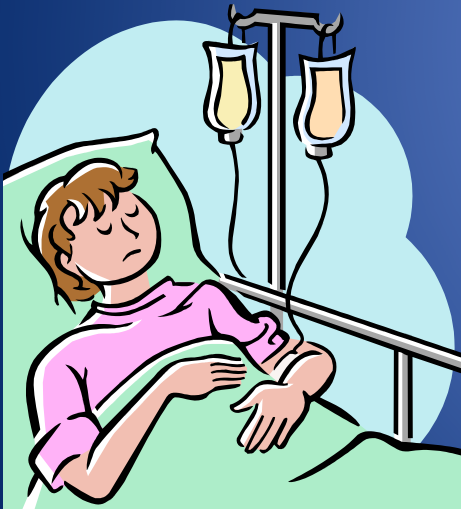
How long is each rotation?

- Each rotation is four weeks in length

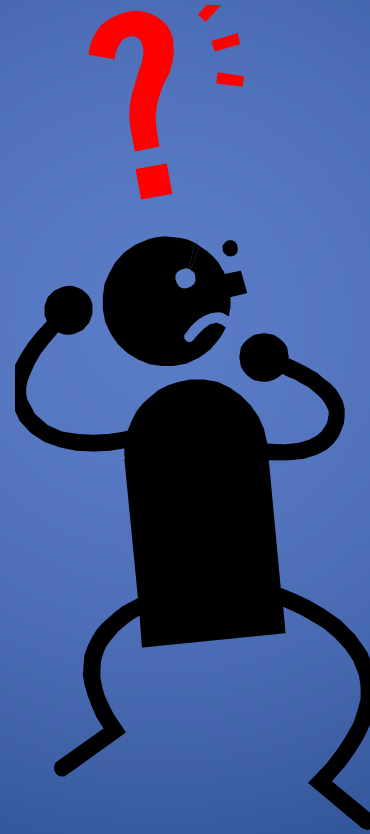


Are there required rotations?

- Yes! Each student does seven required rotations.



What are the required rotations?



Required Rotations

Family Medicine

This rotation is always completed at a rural location and never in Rochester or La Crosse.



This specialty focuses on the treatment of the entire family... "from cradle to grave"It is completed primarily in the clinic as opposed to the hospital.

Family Medicine Rotation Locations

Common Satellite Sites Used....

Gundersen

- Sparta, WI
- Tomah, WI
- Harmony, MN
- Hillsboro, WI
- West Union, IA
- Caledonia, MN

Mayo

- Austin, MN
- Barron, WI
- Kasson, MN
- Fairmont, MN
- Faribault, MN
- Lake City, MN

Required Rotations

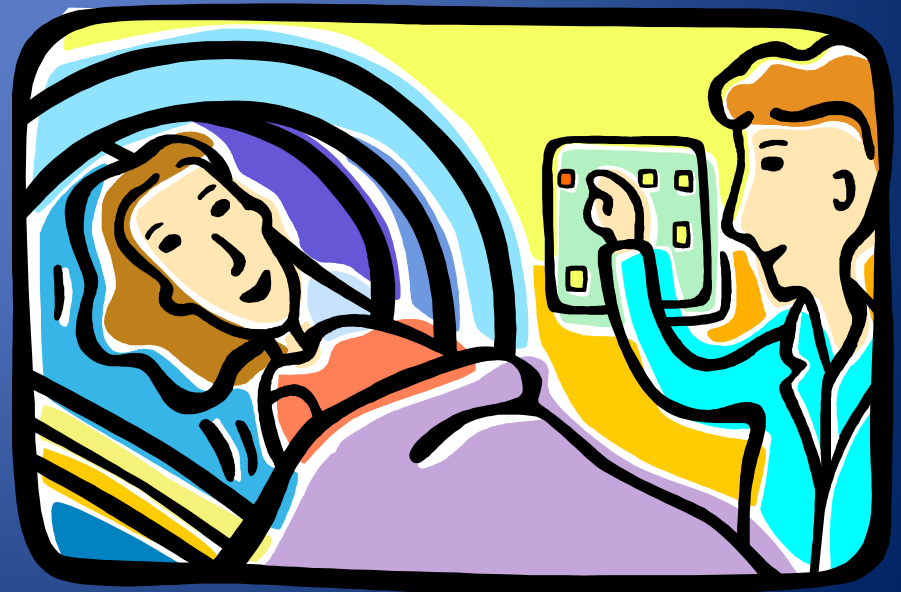
Internal Medicine

This may be either clinic or hospital-based. You evaluate and treat mostly elderly patients with diseases involving the heart, lungs, kidneys and gastrointestinal tract.

Locations:

Gundersen: La Crosse

Mayo: Rochester



Required Rotations

General Surgery

Locations:

Gundersen: La Crosse

Mayo: Rochester

You scrub in for surgeries and are involved in pre-op and post-op care of the patients.



Required Rotations

Obstetrics and Gynecology

Gundersen: La Crosse

Mayo: Rochester or Austin, MN

During this rotation you are exposed to routine gynecologic care, prenatal care and deliveries.



Required Rotations

Pediatrics

Locations

Gundersen: La Crosse

Mayo: Austin, Fairmont,
Faribault, Barron, Winona



This rotation teaches you how to recognize abnormal development, how to recognize pediatric diseases and how to treat them. Most of your time is spent in the clinic as opposed to the hospital.

Required Rotations

Psychiatry

Locations

Gundersen: La Crosse

Mayo: Rochester



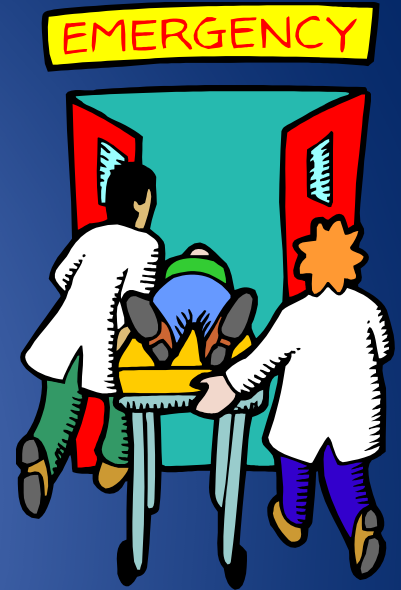
This rotation teaches you to recognize and treat diseases of the mind. It may be either hospital or clinic focused-or a combination of both!

Required Rotations

Emergency Medicine

Gundersen: La Crosse or Sparta, WI

Mayo: Rochester or Barron, WI



You are exposed to both minor and serious problems seen in the emergency room. You have the opportunity to work shifts during days, nights and weekends totaling a minimum of 40 hours per week.

What other rotations do I complete?

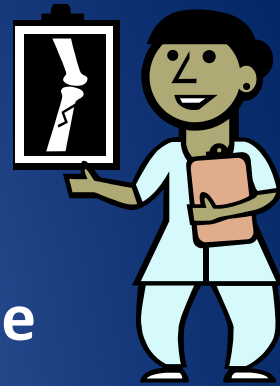
- 4 Selective Rotations

- Locations

- 2 selective rotations must be completed within the Gundersen or Mayo Health Care Systems

- 2 selective rotations may be completed outside the partner institutions

- *Selective rotations are intended to broaden the student's skill and base of knowledge as well as providing depth to interest areas of the student*

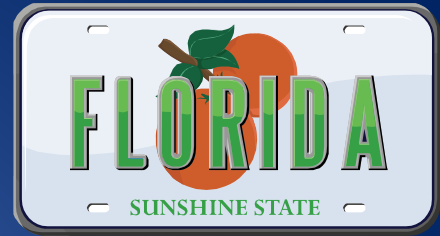


Examples of Selectives Students Have Completed

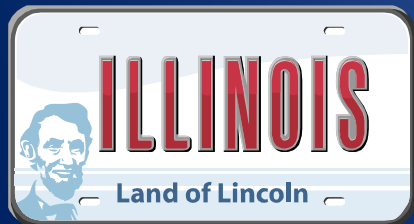
Ear nose and throat	Neurosurgery	Neurology	Gastro- enterology	Transplant Surgery
Sports Medicine	Pediatric Surgery	Infectious Disease	Urology	Palliative Medicine/ Hospice Care
Cardiovascular Surgery	Oncology	Cosmetic Dermatology	Endocrinology	Women's Health
Pulmonary medicine	Trauma Surgery	Neonatology	Geriatrics	Organ procurement program



NOTE!



- While, if requested, we will attempt to find selective rotations for you outside of the Gundersen and Mayo Health Care Systems, it is becoming increasingly difficult to do so.
- This is because there are an increasing number of medical learners at health care facilities across the nation.



Summary

Required Rotations (7)	Selective Rotations (2)
<ol style="list-style-type: none">1. Family Medicine2. Internal Medicine3. General Surgery4. Obstetrics and Gynecology5. Pediatrics6. Psychiatry7. Emergency Medicine	<ol style="list-style-type: none">1. Chosen within partner healthcare systems2. Chosen within partner healthcare systems3. Chosen within or outside of partner healthcare systems4. Chosen within or outside of partner healthcare systems

What Else Should I Know?

In what order will I do my rotations?

- Everyone will do their rotations in a different order.
- You may start your clinical year with a required rotation or a selective rotation.

Do I come back to the UW-L campus during my clinical year?

- The last Friday of each rotation is spent on campus completing “capstone day” requirements.
- On this day, you take examinations, give presentations, listen to lectures and participate in activities designed to prepare you for licensure and credentialing.

Tell me more about the tests during the clinical year!!

- Rotation examinations are given the last Friday of each rotation.
- These ensure that you are reading about your patients and help prepare you for the PANCE examination.

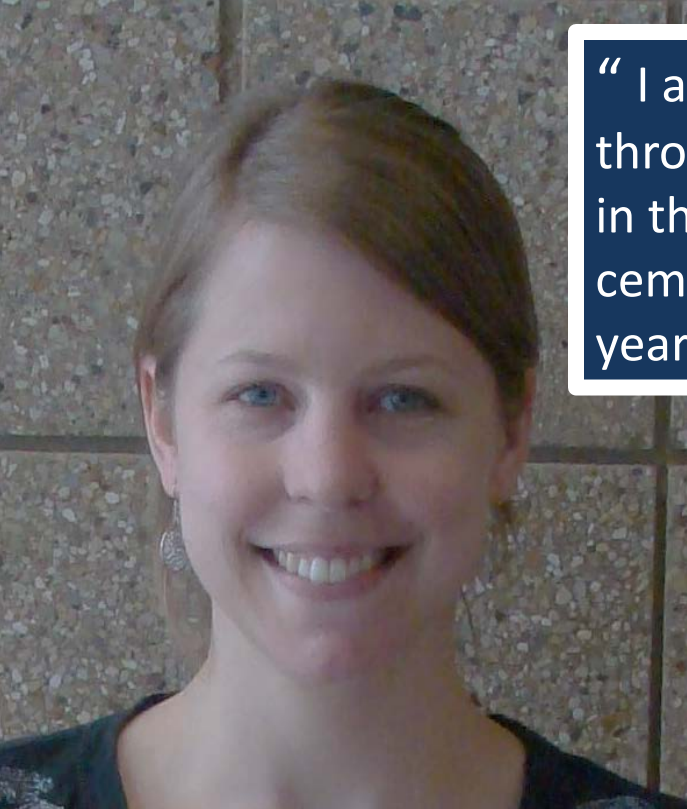
The following are some examples of clinical year schedules from our current clinical year students.

“The clinical year: the PA student’s ultimate sampler platter of outstanding opportunities!”



Karen Squillace
Class of 2012
Hometown: Rochester, MN
Goal: Mayo PA

Rotation 1 Allergy Rochester	Rotation 2 Emergency Medicine Rochester	Rotation 3 Pediatrics Austin, MN	Rotation 4 OB/GYN Austin, MN
Rotation 5 Internal Medicine Rochester	Rotation 6 Family Med Kasson, MN	Rotation 7 Geriatrics Rochester	Rotation 8 General Surgery Rochester
Rotation 9 Orthopedics Rochester	Rotation 10 Psychiatry Rochester	Rotation 11 Neuro- surgery Rochester	



“ I am the type of person that learns better through experience so for me seeing patients in the clinical setting has truly helped to cement those concepts I learned in the first year!”

Maureen Ovans
Class of 2012
Hometown: Northfield, MN
Goal: Undecided so far!

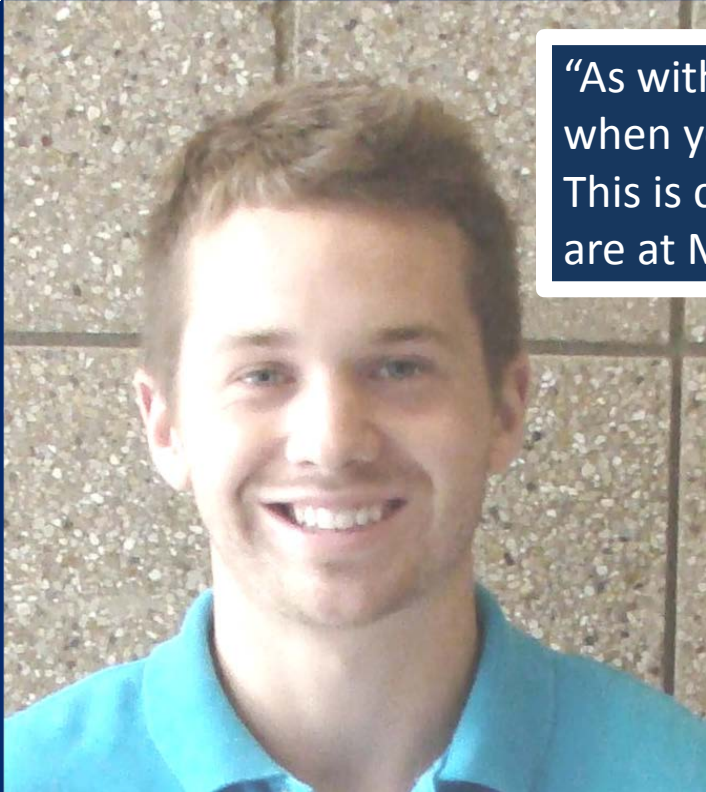
Rotation 1 OB/GYN Rochester	Rotation 2 Internal Medicine Rochester	Rotation 3 Dermatology Elective Northfield	Rotation 4 Orthopedics Selective Rochester
Rotation 5 Pediatrics Faribault	Rotation 6 Emergency Medicine Barron, WI	Rotation 7 Psychiatry Rochester	Rotation 8 Family Med Barron
Rotation 9 Trauma surgery Elective St. Paul	Rotation 10 General Surgery Rochester	Rotation 11 Cardiology Selective Rochester	



“The clinical year is a priceless learning experience! I learn new things everyday from providers and patients that are helping me to develop into the PA I want to be!”

Jennifer Hildahl
Class of 2012
Hometown: La Crosse, WI
Goal: ER PA

Rotation 1 Internal Medicine La Crosse	Rotation 2 Psychiatry La Crosse	Rotation 3 Cardiology Selective La Crosse	Rotation 4 General Surgery La Crosse
Rotation 5 Family Med Selective Harmony	Rotation 6 OB/GYN La Crosse	Rotation 7 Women’s Health La Crosse	Rotation 8 Pediatrics La Crosse
Rotation 9 Family Med Sparta	Rotation 10 Emergency Medicine La Crosse	Rotation 11 Emergency Medicine Elective Sparta	



“As with anything else, you are at your best when you are working alongside the best. This is certainly an everyday case when you are at Mayo!”

Kyle Burkhamer
 Class of 2012
 Hometown: Osceola, MN
 Goal: ER PA

Rotation 1 Family Medicine <i>Barron, WI</i>	Rotation 2 Emergency Medicine <i>Barron, WI</i>	Rotation 3 Emergency Medicine Elective <i>Osceola, MN</i>	Rotation 4 Internal Medicine <i>Rochester, MN</i>
Rotation 5 Emergency Medicine Elective <i>Eau Claire, WI</i>	Rotation 6 General Surgery <i>Rochester, MN</i>	Rotation 7 Cardiology (Selective) <i>Rochester, MN</i>	Rotation 8 Psychiatry <i>Rochester, MN</i>
Rotation 9 Dermatolog y Selective <i>La Crosse, WI</i>	Rotation 10 OB/GYN <i>Rochester, MN</i>	Rotation 11 Pediatrics <i>Barron, WI</i>	

Thank you for coming today!