

University of Wisconsin La Crosse Storm Water Pollution Prevention Plan (SWPPP)

Prepared By: Dan Sweetman
Last Updated: March 9, 2023

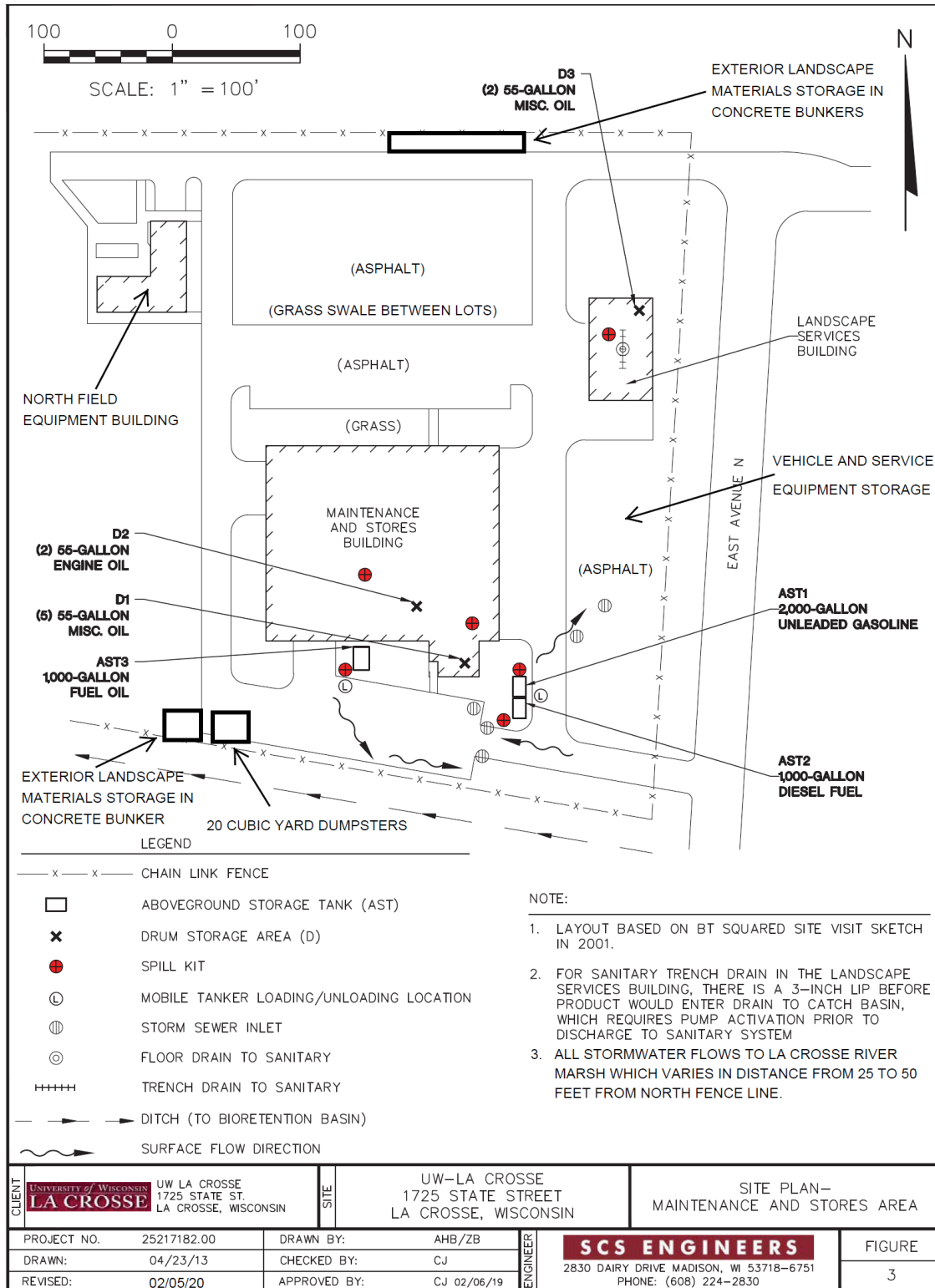
Purpose: This Storm Water Pollution Prevention Plan (SWPPP) covers operations at the University of Wisconsin La Crosse (UWL). The plan is limited to municipal garages, municipal storage areas, and other public works related municipal facilities as required by section 2.6.3 Municipally Owned Public Works Facilities of WPDES Permit No. WI-S050075-3. This plan is limited to the Maintenance and Stores Building, Grounds Services Building, and North Field Equipment Building located at 855 East Ave. North, La Crosse, WI 54601.

Location Map: UWL - Maintenance and Stores, Grounds Services, and North Field Equipment Buildings



Site Plan:

UWL - Maintenance and Stores, Grounds Services, and North Field Equipment Buildings



Contact Information:

Primary: Scott Brown
Director of Facilities Management
University of Wisconsin La Crosse
855 East Avenue North
La Crosse, WI 54601
sbrown2@uwlax.edu
608-785-8590

Secondary: Scott Schumacher
Director of Planning & Construction
University of Wisconsin La Crosse
855 East Avenue North
La Crosse, WI 54601
sschumacher@uwlax.edu
608-785-8916

Emergency Contact (on-site): University of Wisconsin La Crosse Police
Emergency: 608-789-9999
Non-Emergency: 608-789-9000

Inventory of Potential Sources of Contamination:

The following have been identified as potential sources of storm water contamination.

- Exterior storage areas for maintenance vehicles and equipment;
- immediate access roads;
- exterior storage of landscape materials (i.e., mulch, soil, compostable plant material, and topsoil);
- shipping and receiving areas;
- aboveground storage tanks for gasoline, fuel oil, and diesel fuel;
- roll-off dumpsters for metals recycling and construction debris; and
- private vehicle parking.

Other Plans Incorporated by Reference:

The following plan(s) is/are incorporated into the SWPPP by reference.

- Spill Prevention Control and Countermeasures (SPCC) Plan: This plan was last updated in July 2020. The plan must be updated by July 2025, unless there are changes to oil storage locations. This plan is available from University of Wisconsin La Crosse Environmental Health and Safety.
- University of Wisconsin La Crosse Emergency Response Plan. This plan is updated as needed by University Police. This plan is available at the University of Wisconsin La Crosse website, search for Emergency Response Plan.

Procedures, Good Housekeeping, and Best Management Practices to Reduce or Eliminate Storm Water Contamination:

- The University of Wisconsin La Crosse (SPCC) Plan is fully implemented. This Plan identifies that all exterior above ground storage tanks that could contaminate storm water are compliant with existing US EPA and WI DNR design features to reduce spills of gasoline, diesel fuel, and fuel oil during storage, vehicle fueling, and during fuel delivery.
- Spill control materials are available immediately adjacent to all aboveground storage tanks. Additional spill control supplies are retained inside facilities covered by this SWPPP.
- All construction debris and scrap metal are placed in 20 cubic yard roll offs for recycling or disposal.
- All trash and other recyclables (e.g. paper, cardboard, plastics, metal cans) are placed in covered six to eight cubic yard dumpsters.
- All mulch, topsoil, compostable brush, and similar grounds services materials are stored in concrete bunkers. Topsoil is tarped to prevent water infiltration and runoff. The bunkers are installed in a location designed to divert water flow away from the bunkers during a rain and snow melt events.
- The commuter parking lot on the north side of the Maintenance Building collects storm water in a grassy swale, with excess water draining to a catch basin with overflow to the La Crosse Marsh.
- The services parking lot on the south side of the Maintenance Building collects storm water in a bioinfiltration basin, with excess water draining to a flat grassy pervious zone (baseball fields).
- Vehicle washing, equipment washing and service work is performed inside facilities. All drains in facility lead to the sanitary sewer system.
- Hazardous materials are stored within the facilities covered by this SWPPP.
- There are no processes within the facilities covered by this SWPPP that result in contamination to the roof. Roof drains lead to the storm sewer system or pervious grassy areas adjacent to facilities.
- Woodworking dust collection is via a cyclonic separator.
- A minimal amount of ice melt is used to maintain safe walking surfaces.

Maintenance Plan with Inspection Procedures and Schedule:

- The University of Wisconsin La Crosse (SPCC) Plan is fully implemented. This Plan identifies monthly, quarterly, and annual inspection requirements. The University has included these inspections in its preventive maintenance program, which provides regular reminders and inspection instructions to maintenance staff assigned the task.
- Maintenance staff receive initial and annual training/information on SPCC requirements specific to their occupations.
- Facilities Planning and Management or Environmental Health and Safety will annually evaluate the effectiveness of the SWPPP, take appropriate corrective actions, and as necessary revise the SWPPP.