

The Sustainability Challenge: Designing Projects for Success *Beyond* the Grant Period

Jeremy T. Miner
WiSys Regional Research Administrator
jminer@wisys.org



WiSys

© Jeremy T. Miner, 2018

1

Grant Professional Development Opportunities

2018-19 GRANT WEBINAR SCHEDULE:

- 1** **OCTOBER 11, 2018**
2:00-2:45PM
Funding Opportunities for Your Teaching,
Research & Scholarship
- 2** **NOVEMBER 8, 2018**
2:00-2:45PM
The Sustainability Challenge: Designing
Projects for Success *Beyond* the Grant Period
- 3** **DECEMBER 13, 2018**
2:00-2:45PM
Preproposal Contacts: Who You Need to Talk
to & What You Need to Know *Before* Writing
Your Next Grant Proposal
- 4** **FEBRUARY 14, 2019**
2:00-2:45PM
Common Grant Writing Pitfalls - and How to
Avoid Them
- 5** **MARCH 7, 2019**
2:00-2:45PM
Building a *Believable* Budget
- 6** **APRIL 11, 2019**
2:00-2:45PM
Collaborative Grantseeking: Accumulating
Precious "Wins" & Avoiding Painful "Losses"

See full session descriptions and
register online for **FREE** at
www.wisys.org/grants/webinars.

WiSys

2

Session Outline

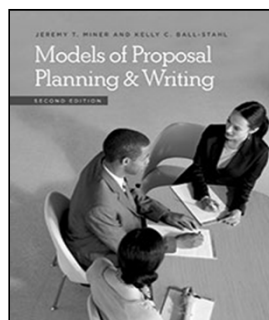
- Why?
- What?
- How long?
- How? – Case Study
- Where to begin?
- Reconsider project design?
- Questions?



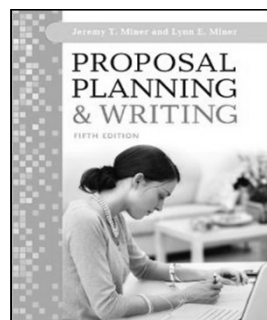
WiSys®

3

Grant Writing Resources



Greenwood, 2016



Greenwood, 2013

**ABC-CLIO
GREENWOOD™**
www.greenwood.com



Greenwood, 2011

WiSys®

4

Why?



WiSys

Private Foundation Grant Programs

- **Eau Claire Community Foundation**

Program Description: Is there community support for this program? Is the program sustainable without future funding from the Eau Claire Community Foundation? How are volunteers used in this program?

- **Greater Milwaukee Foundation**

Evaluation Criteria: Potential for leveraged funding, especially from national sources. Project sustainability and opportunity for replication.

- **Robert Wood Johnson Foundation**

Selection Criteria: A realistic plan to sustain funding after the LFP grant is completed. Potential for the project to become a national model.

WiSys

State Grant Programs

- **Wisconsin Campus Compact**

Sustainability Plan: Sustainability outcomes are the impacts that lead to the institutionalization of the new programming effort, measured over a three-year time horizon (staff positions funded to continue activity, student leadership of activities, new programs maintained by existing staff, etc.).

- **Wisconsin Department of Public Instruction**

Budget Justification: Includes a specific description about how all available resources will be leveraged to coordinate services to support and sustain the program.

- **Wisconsin Office of Rural Health**

Budget & Narrative: The narrative should include your sustainability plans, i.e., how you plan to continue your project after the end of the grant period. Your budget must include a minimum 25% match of cash or in-kind contributions.

WiSys

Federal Grant Programs

- **U.S. Department of Agriculture**

Financial Information and Sustainability: The applicant must provide a narrative description demonstrating the feasibility of the project, including having sufficient resources and expertise necessary to undertake and complete the project and, how the project will be sustained following completion of the project.

- **U.S. Department of Education**

Quality of Project Design: Describe the extent to which the proposed activities include a coherent, sustained program of research and development in the field.

- **U.S. Department of Justice**

Sustainability Plan: The extent to which the applicant proposes feasible strategies to preserve project activities long-term and provide institutional support in order to sustain projects activities when grant funding ends.

WiSys

What?



WiSys

Types of Grant Projects

- | | |
|--------------------------|---------------------------|
| • Conference | • Program |
| • Construction | • Publication |
| • Creative work | • Research |
| • Curriculum development | • Scholarship/ Fellowship |
| • Education | • Service delivery |
| • Equipment | • Training |
| • Outreach | • Travel |

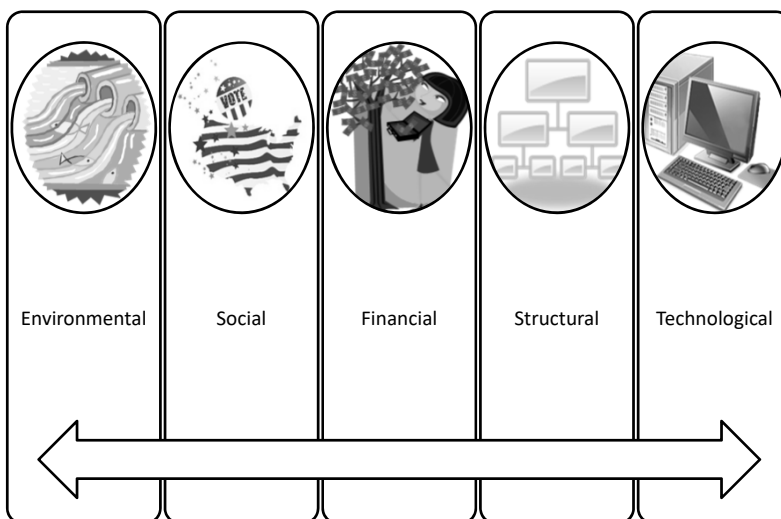
WiSys

Two Core Questions

- Exactly what needs to be sustained?
 - Funding vs. processes
 - Positions vs. engagement
 - Activities vs. outcomes
- Exactly what will live on beyond the grant?
 - A model
 - Products/services
 - Infrastructure
 - Knowledge/practices
 - Networks
 - Results/impacts

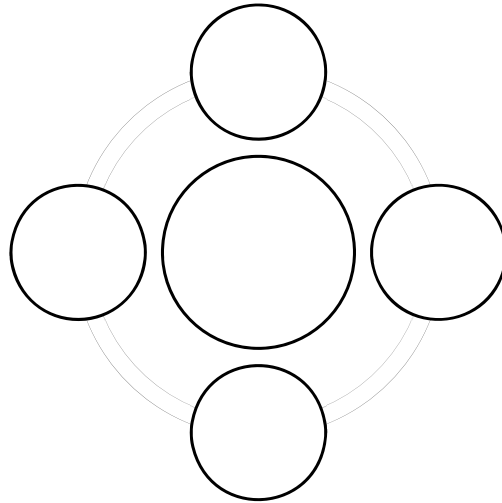
WiSys

5 Types



WiSys

Budget Targets



WiSys

The Most Commonly Written Sustainability Paragraph



To sustain our mission and the granting performance of the national grants from public and private sources as well as philanthropic gifts from individual donors. Our institution is for the broad base of support that is essential, and national funding.

WiSys

Structural



While many community-based organizations have high personnel turnover, our project is engrained in an organizational structure that offers long-term stability and sustainability. Accordingly, this project has the potential for substantially changing systems for health care beyond the granting period. With initial government grant support, we have sustained an effective environmental lead prevention coalition. We anticipate that your generous support will have a similar impact on health care systems in our community.

WiSys

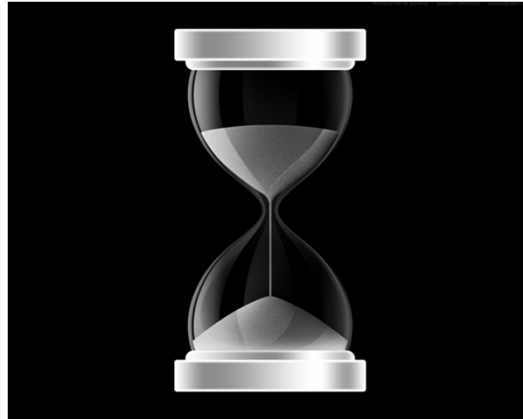
Technological



In this information age, it's counterintuitive to dedicate staff time to chasing down patients via email and mobile phone to collect health information when they will voluntarily input it on their own, if given a secure portal. Automated scheduling and record maintenance will free up staff time to engage in higher order tasks, such as tracking immunizations, assessing complications, conducting surveillance and investigating disease outbreak. Streamlined operations will help provide more time for staff to engage in data collection and analysis, and thus ensure a high quality of care.

WiSys

For How Long?



WiSys®

How?



WiSys®

Case Study—You Be the Judge



Situation: Grantmaker provides funds to support state-based organizations, local leaders and citizens to create strong, healthy neighborhoods and communities through demonstrating how a range of partners from multiple sectors in the community can work together to pursue evidence based policy, systems and environmental change strategies that address the key determinants that most strongly influence community health.

WiSys



Project Idea #1

Goal	To improve the health and safety of children ages 5-15 years by reducing bicycle-related injuries.
Activities	Draft a position paper and advocate among state representatives for a state law to be adopted that requires children under the age of 16 years to wear a helmet while operating a bicycle; include a provision whereby money collected from fines is deposited into a “bike safety fund” that can be used to support educational programs and helmet distribution initiatives.
Outcomes	Legislation is introduced for a mandatory helmet law for minors. Bike-related injury and mortality among minors will decrease.

Questions: Does the project idea reflect...

1. Evidence based policy, systems and environmental change strategies? How so?
2. Approaches that are sustainable beyond the grant period? How so?

WiSys

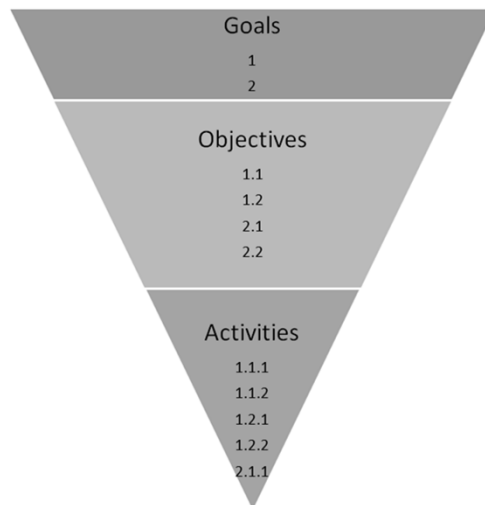
Where to Begin?



“The narrative should include your sustainability plans, i.e., how you plan to continue your project after the end of the grant period.”

WiSys

Elements in a Grant Proposal



WiSys

Elements in a Logic Model



WiSys

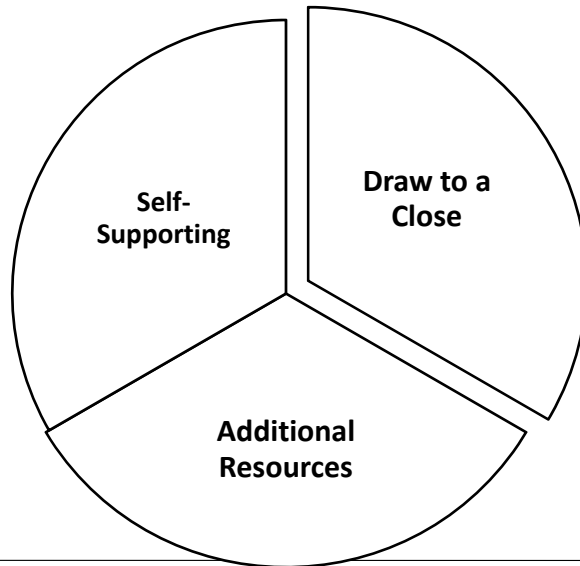
STEM Degrees Logic Model

Inputs	Activities	Outputs	Short-term Outcomes	Medium-term Outcomes	Long-term Outcomes
Faculty	10-week summer research program	Research Symposium poster presentation	Students fully engaged in STEM	Increase rates of student retention from freshman to sophomore year	Increase the number of baccalaureate degrees awarded to underrepresented minorities in STEM (Science, Technology, Engineering, and Mathematics) fields
Admissions Office	Peer mentoring		Students understand process of science		
Multicultural Affairs Office	Weekly research discussions	Regional conference participation	Students build problem solving skills	Increase rates of student persistence to graduation	
Funding	Responsible conduct of research training	Co-authored journal manuscripts	Students build communication skills	Decrease rates of student dropouts	
Residence Halls	Evening social events		Students build self-esteem & confidence	Decrease rates of student stopouts	
Research Symposium					
Laboratory supplies					
Instrumentation					
Fieldwork Sites					

WiSys

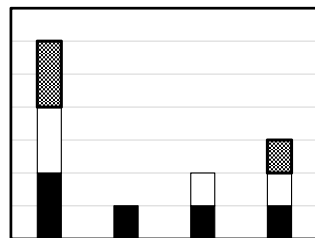
24

Project Components Revisited

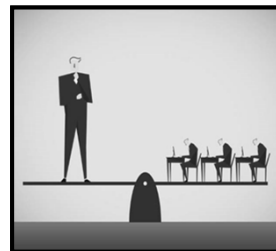


WiSys

Reconsider Project Design?

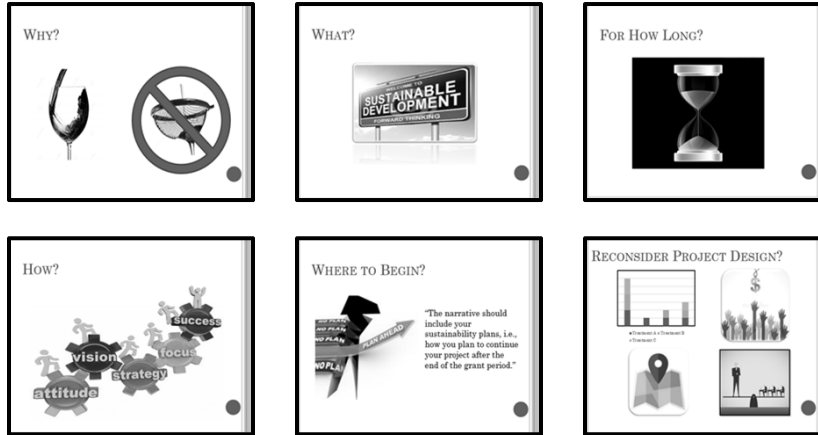


■ Treatment A □ Treatment B ▨ Treatment C



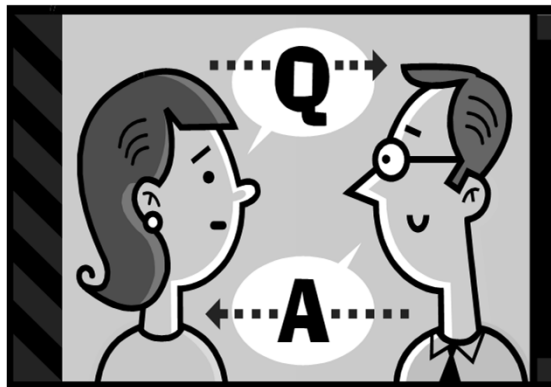
WiSys

Recap



WiSys

Your Questions?



WiSys

28

Grant Professional Development Opportunities



2018-19 GRANT WEBINAR SCHEDULE:

- 1 OCTOBER 11, 2018
2:00-2:45PM
Funding Opportunities for Your Teaching, Research & Scholarship
- 2 NOVEMBER 8, 2018
2:00-2:45PM
The Sustainability Challenge: Designing Projects for Success Beyond the Grant Period
- 3 DECEMBER 13, 2018
2:00-2:45PM
Preproposal Contacts: Who You Need to Talk to & What You Need to Know Before Writing Your Next Grant Proposal
- 4 FEBRUARY 14, 2019
2:00-2:45PM
Common Grant Writing Pitfalls - and How to Avoid Them
- 5 MARCH 7, 2019
2:00-2:45PM
Building a Breakable Budget
- 6 APRIL 11, 2019
2:00-2:45PM
Collaborative Grantseeking: Accumulating Previous "Wins" & Avoiding Painful "Losses"

Join WiSys Regional Research Administrator Jeremy Miner in exploring various aspects of successful grant writing through a live webinar series.

See full session descriptions and register online for FREE at www.wisys.org/grants/webinars.

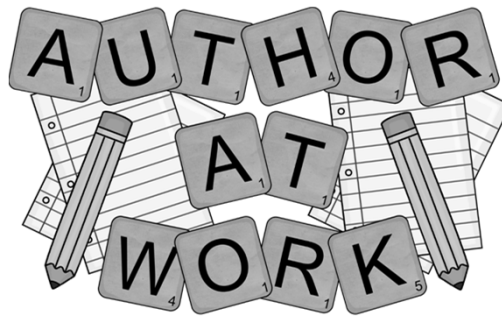
CONTACT:
Jeremy Miner
jminer@wisys.org
for more information

WiSys
Writing Systems

WiSys

29

Go Write Your Best Grant Ever!



Jeremy T. Miner
jminer@wisys.org

WiSys

© Jeremy T. Miner, 2018

30