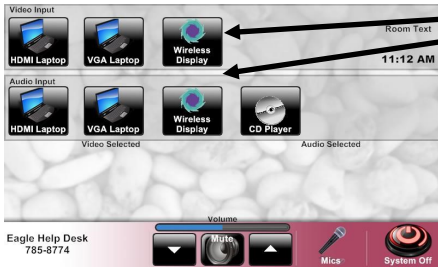
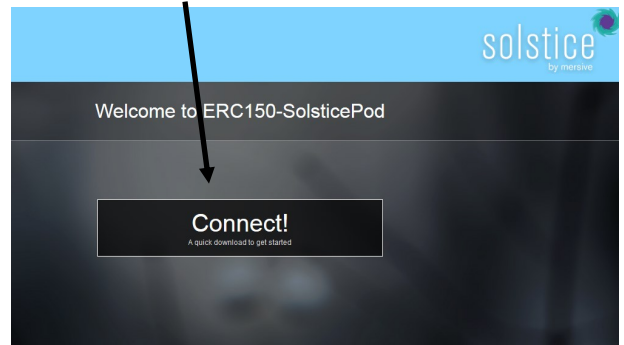
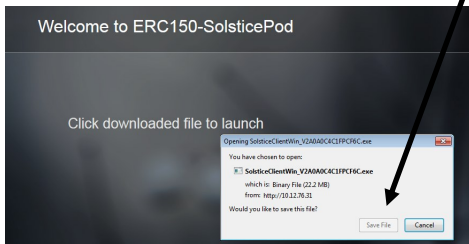


Getting Started with Solstice Pod Wireless Display



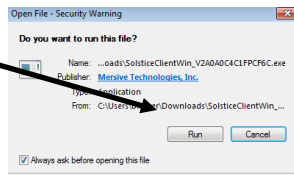
- 1) Select Wireless Display for Audio and Video on the touch panel.
- 2) Open a web browser (Firefox, Chrome, Safari, etc) on your laptop or download the app for your mobile device from iTunes or Google Play. Type in **10.12.76.32** in the address bar. On the web page, click Connect!

- 3) Download and save file.

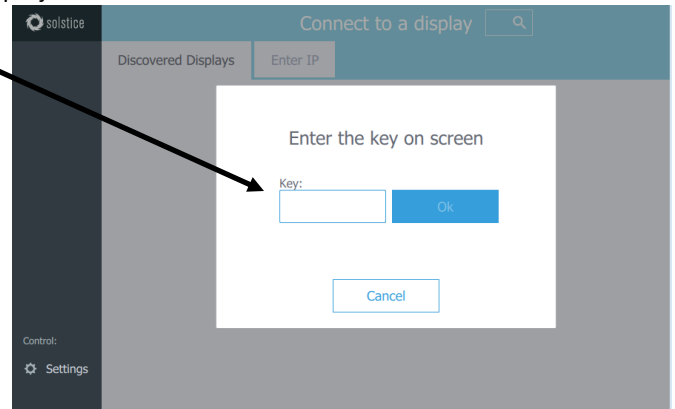


- 4) Click Run.

This will install the Solstice app on your desktop.



- 5) Enter the 4 digit key that is displayed on the projector screen.

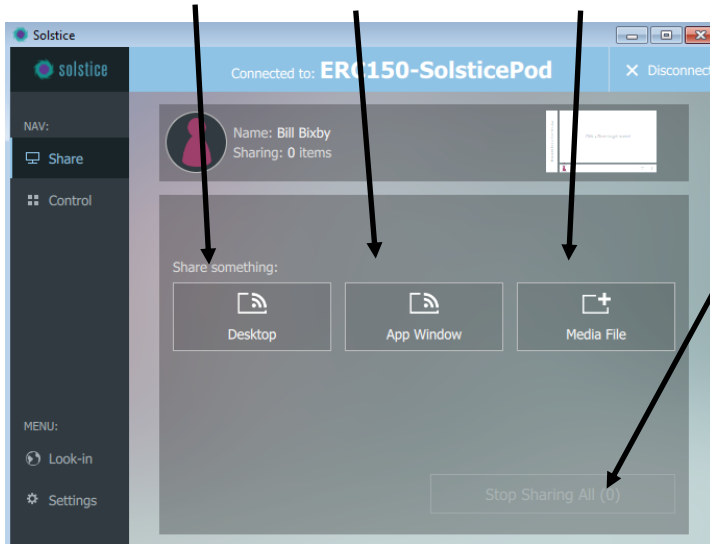


- 6) Once the app is installed you will be prompted to enter your name.

Enter name then click Continue.



- 7) The app will open and request you to Share Something. You may share your entire desktop, an app window, or a media file



- 8) Click Start Sharing at the bottom of the page.

Your device will now display on the projector.

IMPORTANT!
You must be connected to UWL Eagle wireless network. The wireless display will not work if you are connected to UWL Guest.

- 9) The Solstice Client shortcut is stored on your desktop.

The next time you wish to connect just click on the icon and select ERC150-Solstice Pod.

