

CBA ALL COLLEGE MEETING

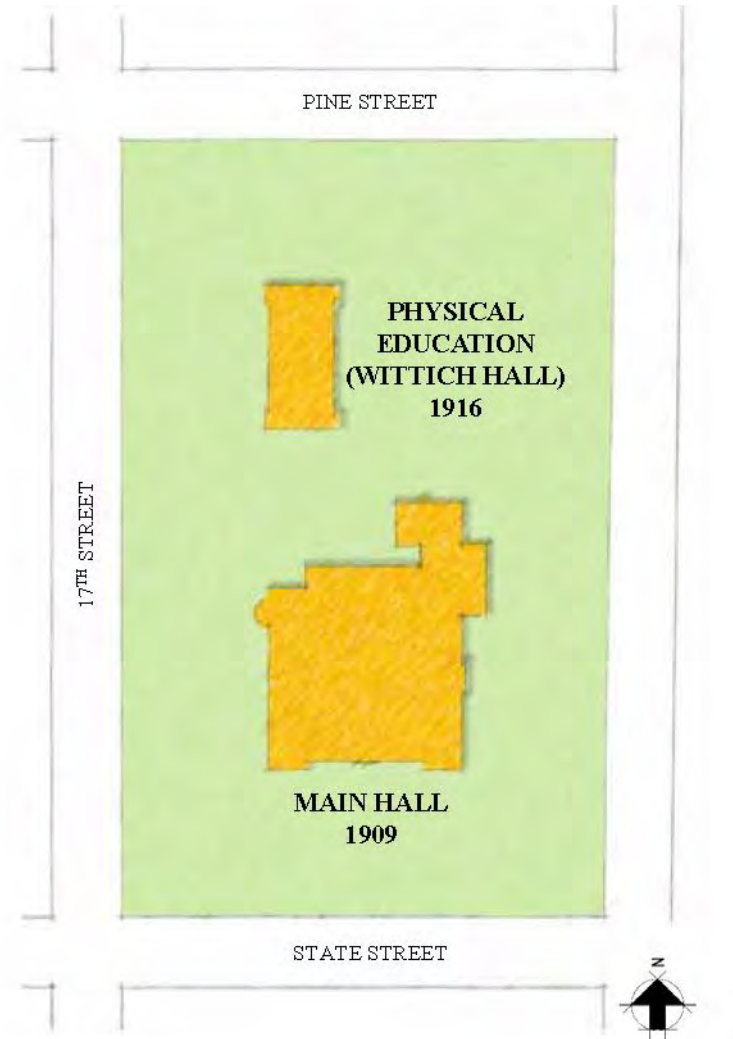


ARO EBERLE
ARCHITECTS

WITTICH HALL

WITTICH HISTORY

- 1912 – A movement began to provide physical education at State normal schools
- La Crosse became the first school in the state to offer a major physical education program
- Wittich Hall gymnasium regarded as the “one of the best in the world”



WITTICH HISTORY

Walter Wittich

- Tenure: 1917–1953
- Attended Milwaukee Normal School, Harvard Summer School, University of Colorado and University of Wisconsin
- Innovator and Leader in physical education programs with national influence

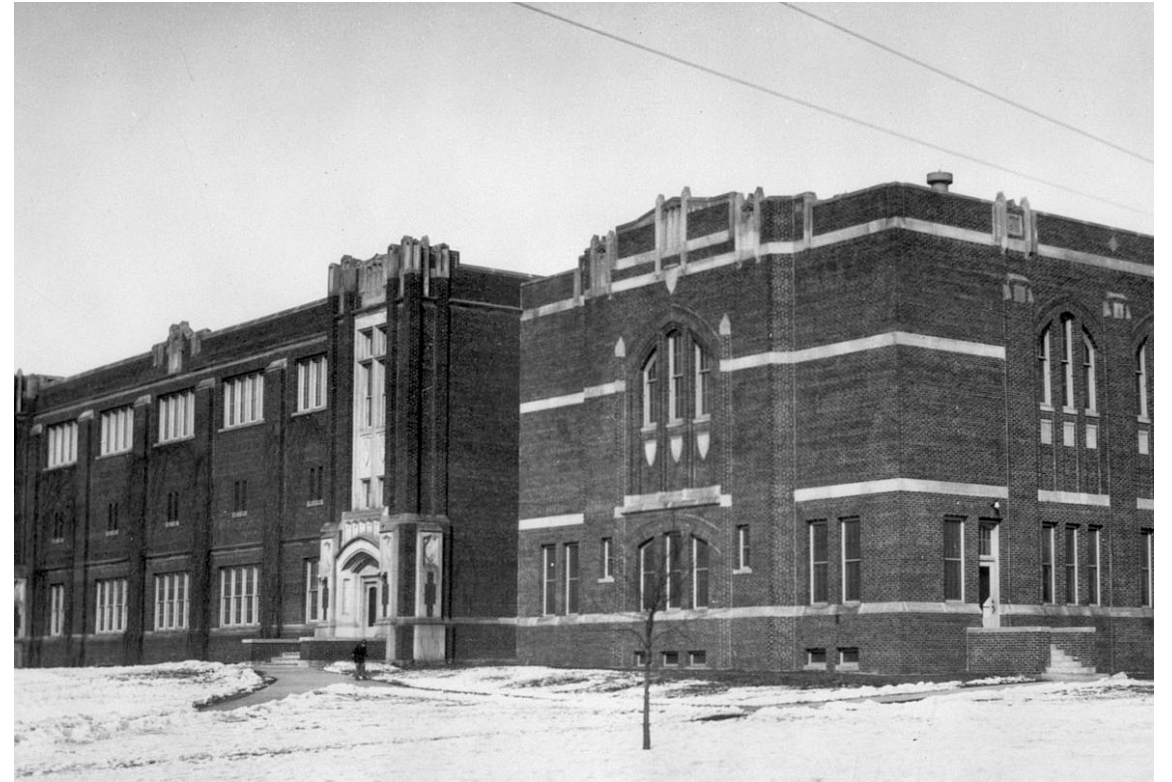


"Under Wittich's directorship, the programs were characterized by their reliance on fundamental training in gymnastics and sports activities, the subordination of athletic competition to the purpose of physical education, and the instilling of truly professional attitudes and competence in students training to be teachers of physical education."

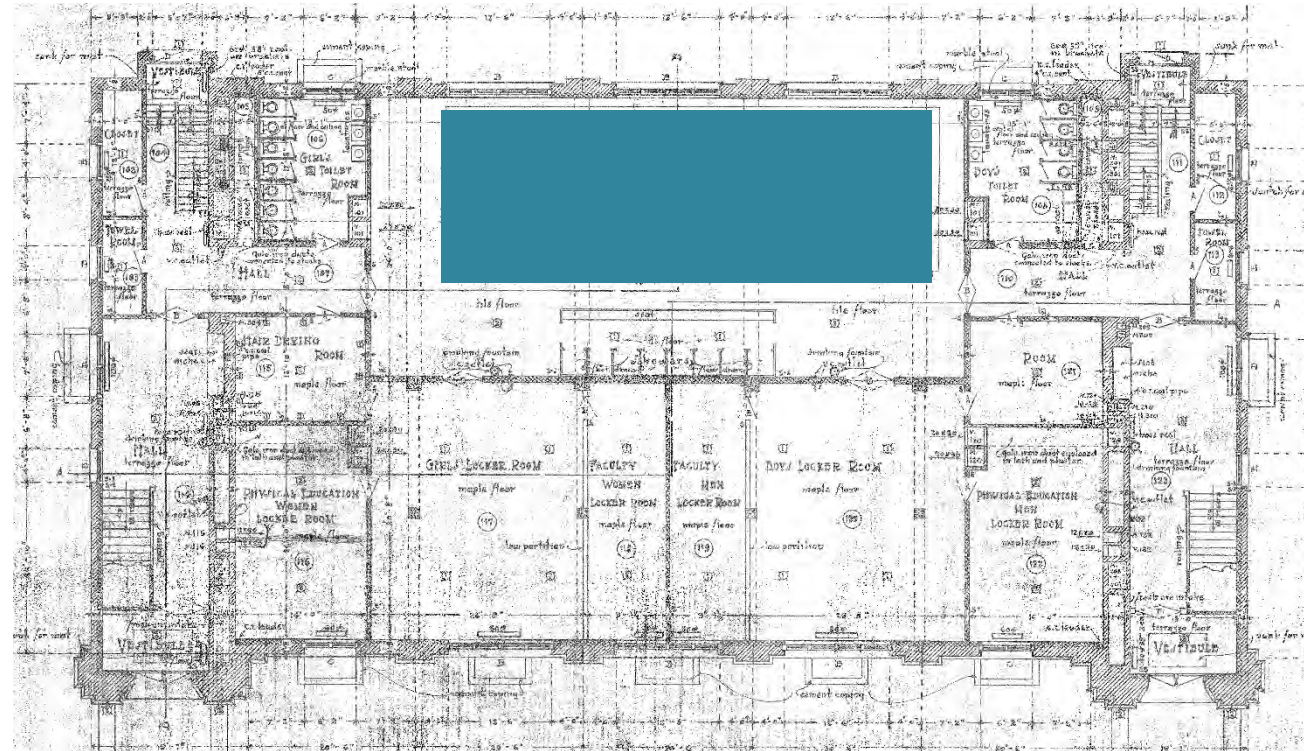
WITTICH HISTORY



WITTICH HISTORY



WITTICH HISTORY



1 outside walls below grade to be concrete. Walls above grade to be brick.

2 walls to be plastered or 2 finished basement.

3 top 1st floor to be plastered finished with Kings crown 1/2" tile. Floor to have ceramic floor.

4 walls of toilet and shower to be made of brick concrete with high 3/4" detail.

5 walls of Pool Room to be made to tile and high detail.

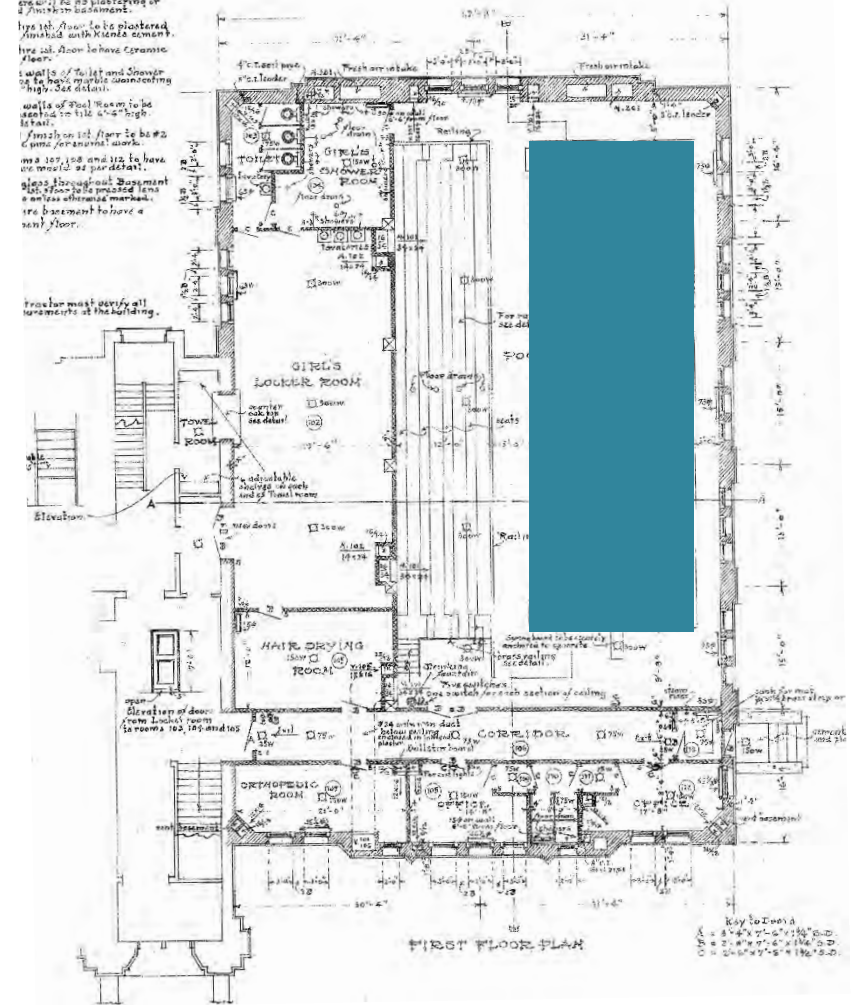
6 finish on 1st floor to be #2 concrete for structural areas.

7 no 1st, 2nd and 3rd to have no record of per detail.

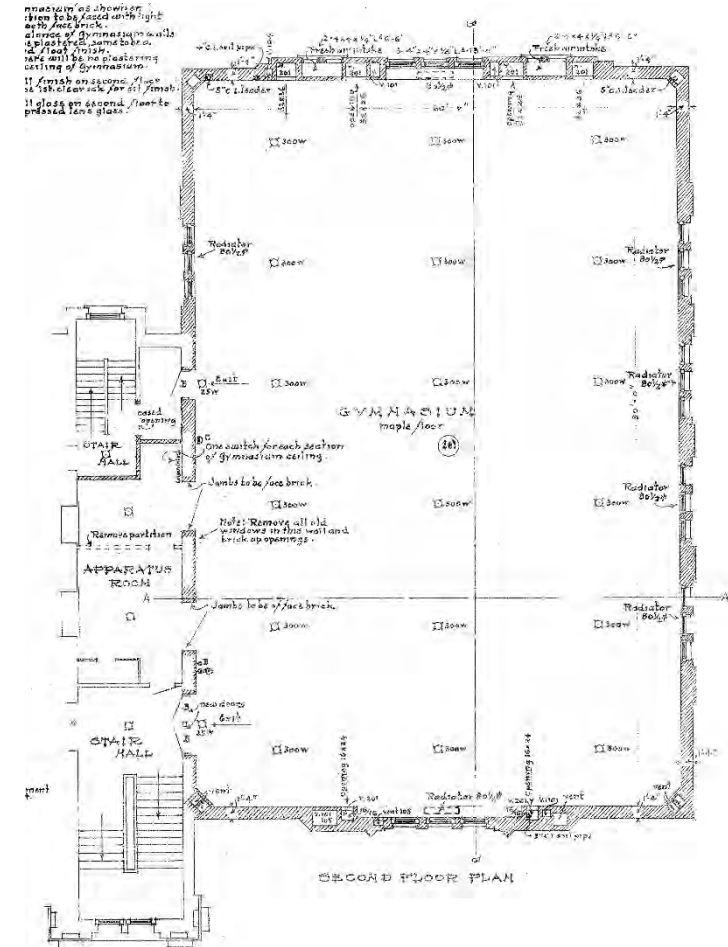
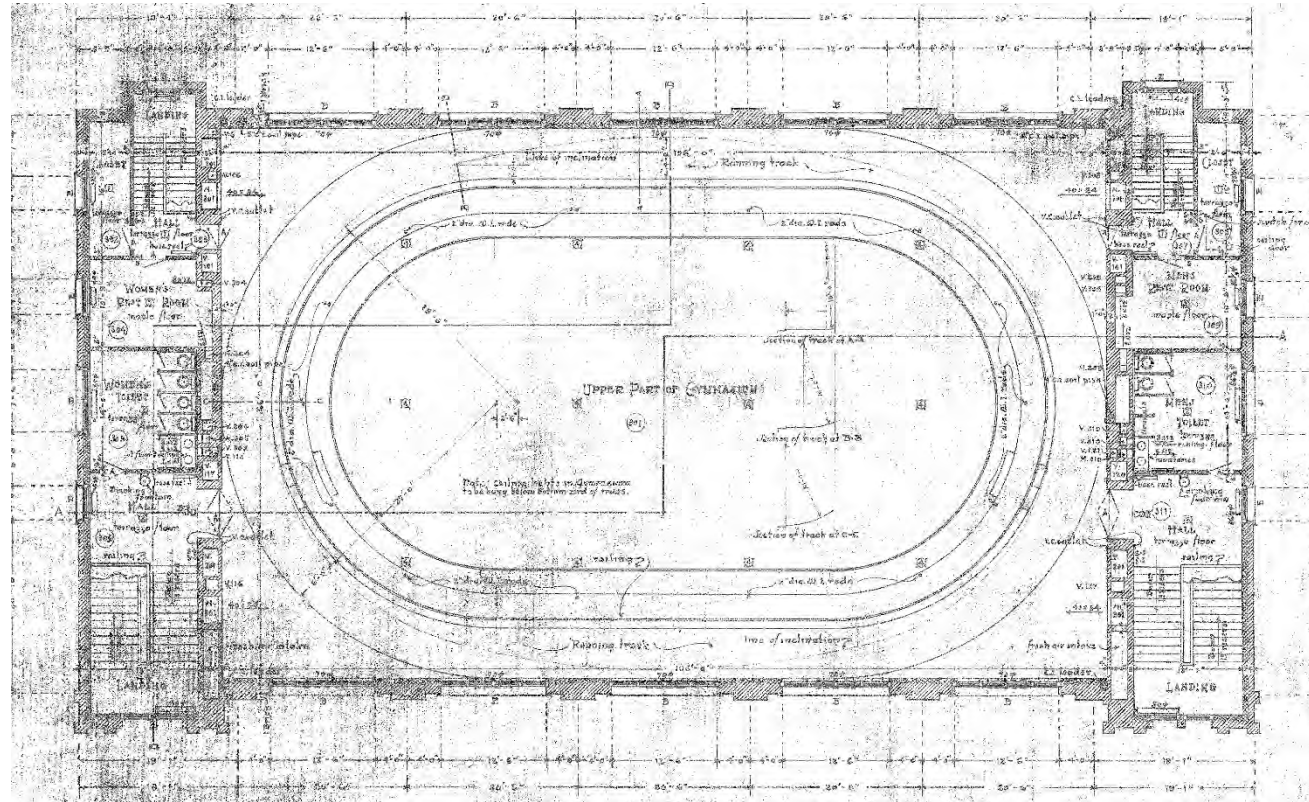
8 glass throughout basement to be floor to be finished. To be no less otherwise marked.

9 no basement to have a sand floor.

Trainer must verify all measurements at the building.



WITTICH HISTORY



WITTICH HISTORY



All photos courtesy of UWL Area Research Center

WITTICH HISTORY



Figure 1.1-1: 1916 Gymnasium; UW-La Crosse Area Research Center (c. 1920)

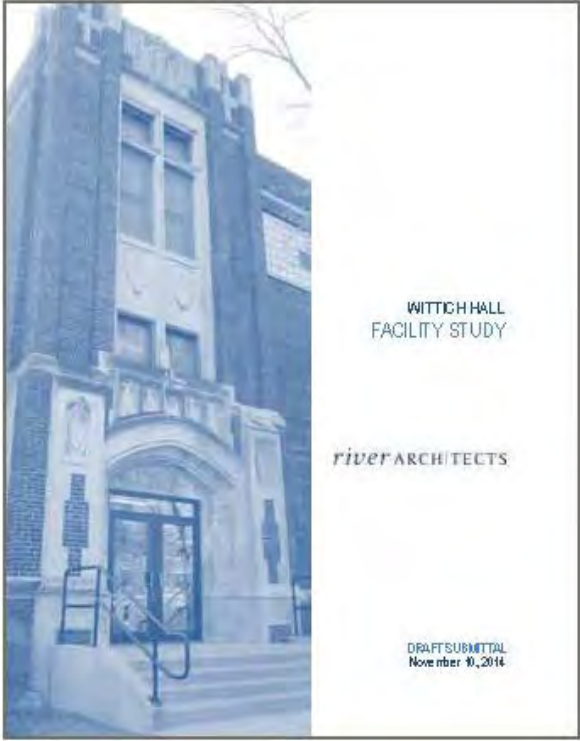
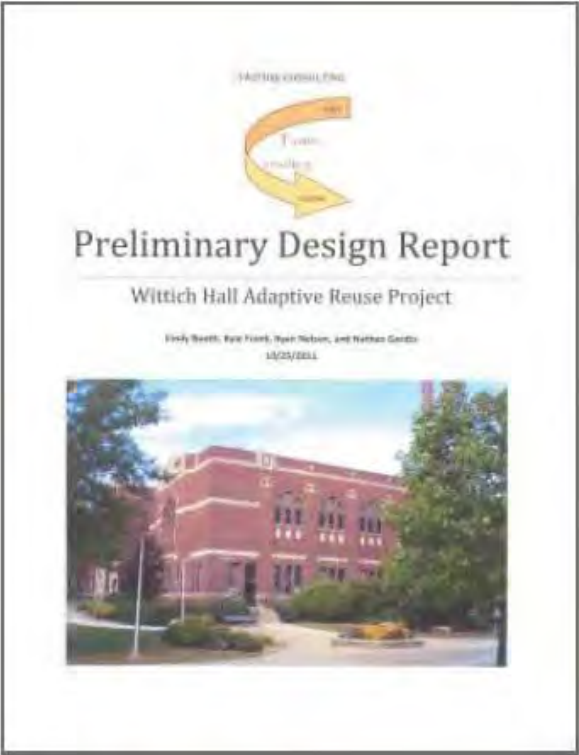
WITTICH HISTORY



NEW HOME FOR THE CBA



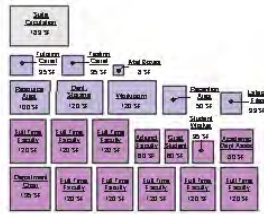
PROJECT BACKGROUND



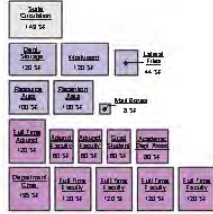
GOALS AND PRIORITIES

- Create an Identity and home for the CBA
- Provide attractions to draw CBA students to the building
- Maximize daylight and access to daylight within space (where desirable)
- Respect Historic character of building while contrasting with new construction
- Improved Accessibility
- Provide private faculty offices
- Facilitate faculty–faculty, faculty–student, and student–student interaction within the space
- Active and flexible work environment
- “Healthy work environment” – encourage movement and a healthy work space
- Daylight and privacy control. Balance of open and light
- Ease of maintenance
- Provide spaces with good acoustic properties

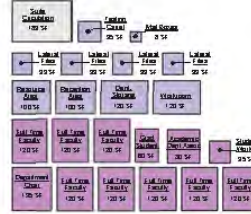
PROGRAMMING



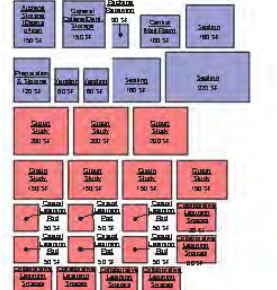
Finance



Information Systems

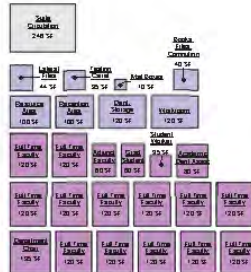


Marketing

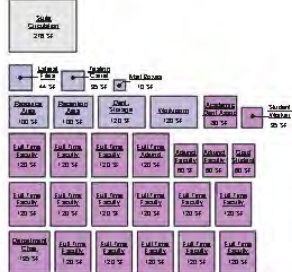


Support

- Academic Space
- Dean's Office
- Dean's Office Support
- Growth
- Mechanical / Electrical
- Meeting Rooms
- Office & Service
- Office & Service Support
- Small Business Development Center Office
- Small Business Development Center Office Support
- Study Space
- Suite Circulation
- Support



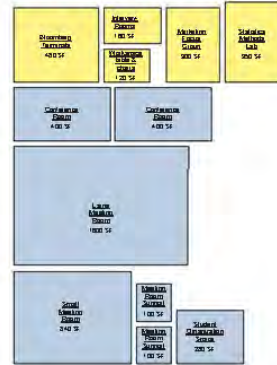
Accountancy



Economics



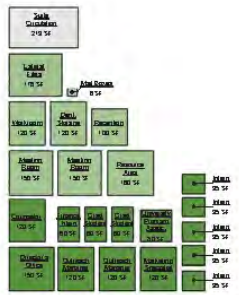
Management



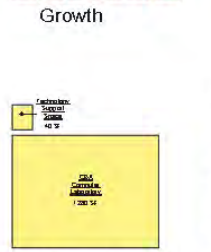
Misc. Instructional / Support Spaces



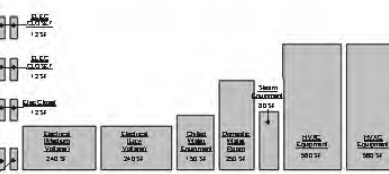
Dean's Office



Small Business Development Center / Center for Entrepreneurship & Innovation



Teaching Laboratories



Mechanical / Electrical / Plumbing Space

BENCHMARKING



HYLAND HALL

TO DATE:

- Hyland Hall – UW Whitewater
- Laurentide Hall – UW Whitewater
- Red Gym – UW Madison

FUTURE:

- Finance Lab (UWM?)
- Active Learning Classroom (UW–Madison?)

IMAGE SURVEY

INTRODUCTION

Aro Eberle Architects engaged with key project stakeholders to conduct an "image survey." The image survey process aims to build consensus and understand the stakeholder's preferences for spatial qualities, aesthetic preferences, room types and other architectural traits.

Our team exhibited 167 different images of institutional projects from around the world. Most images were of a similar building type to the College of Business Administration or other academic buildings. Effort was made to provide a mix of styles and approaches to different spaces. A portion of the images depicted other "adaptive reuse" situations.

The spaces depicted in the images were private offices, public spaces, meeting spaces, conference spaces and educational spaces.

METHODOLOGY

The participants were asked to place adhesive-backed dots of different colors on images that they either liked or disliked. Participants were also encouraged to reinforce likes or dislikes of their colleagues to help create discernable trends among images in the survey. This was done due to the limited group size.

After the stickers were placed, there was an in-depth group discussion about why certain images were selected either as good or bad examples.

 = LIKE  = DISLIKE



IMAGE SURVEY PARTICIPANTS

IMAGE SURVEY

02



LIKE THE ACTIVE LEARNING / FLEXIBLE CLASSROOM SET-UP

05



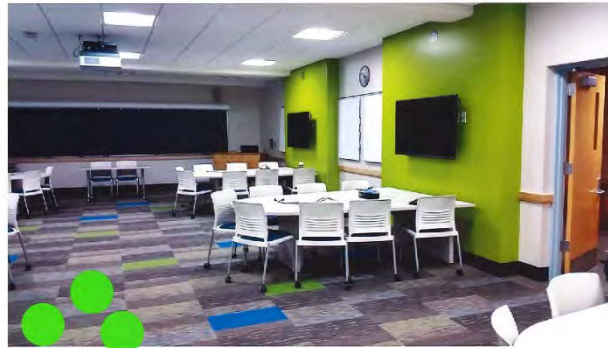
LIKE THIS STYLE COMPUTER LAB

06

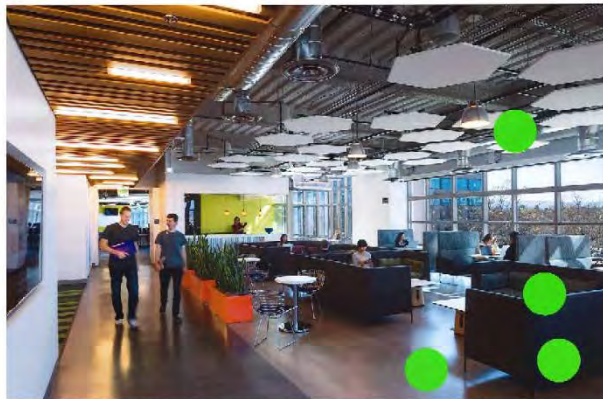


LIKE THIS STYLE COMPUTER LAB

04



07



LIKE DAYLIGHTING AND SET-UP OF COLLABORATION SPACE

08



LIKE MATERIAL CONTRASTS, LIGHTING AND AMPHITHEATER STYLE SEATING AREA; LIKE LIGHTING

IMAGE SURVEY

01



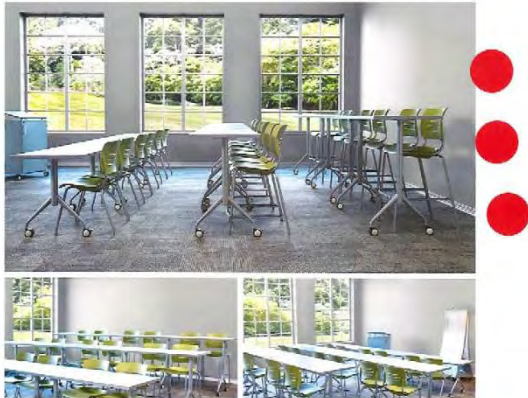
DON'T LIKE THE COLORS OR THE PANEL DESIGN

02



DON'T LIKE THE WOOD-CUT LATTICE

03



DON'T LIKE THE TIERED SEATING

04



LIKE THE TWO GENTLEMEN IN PHOTO

05

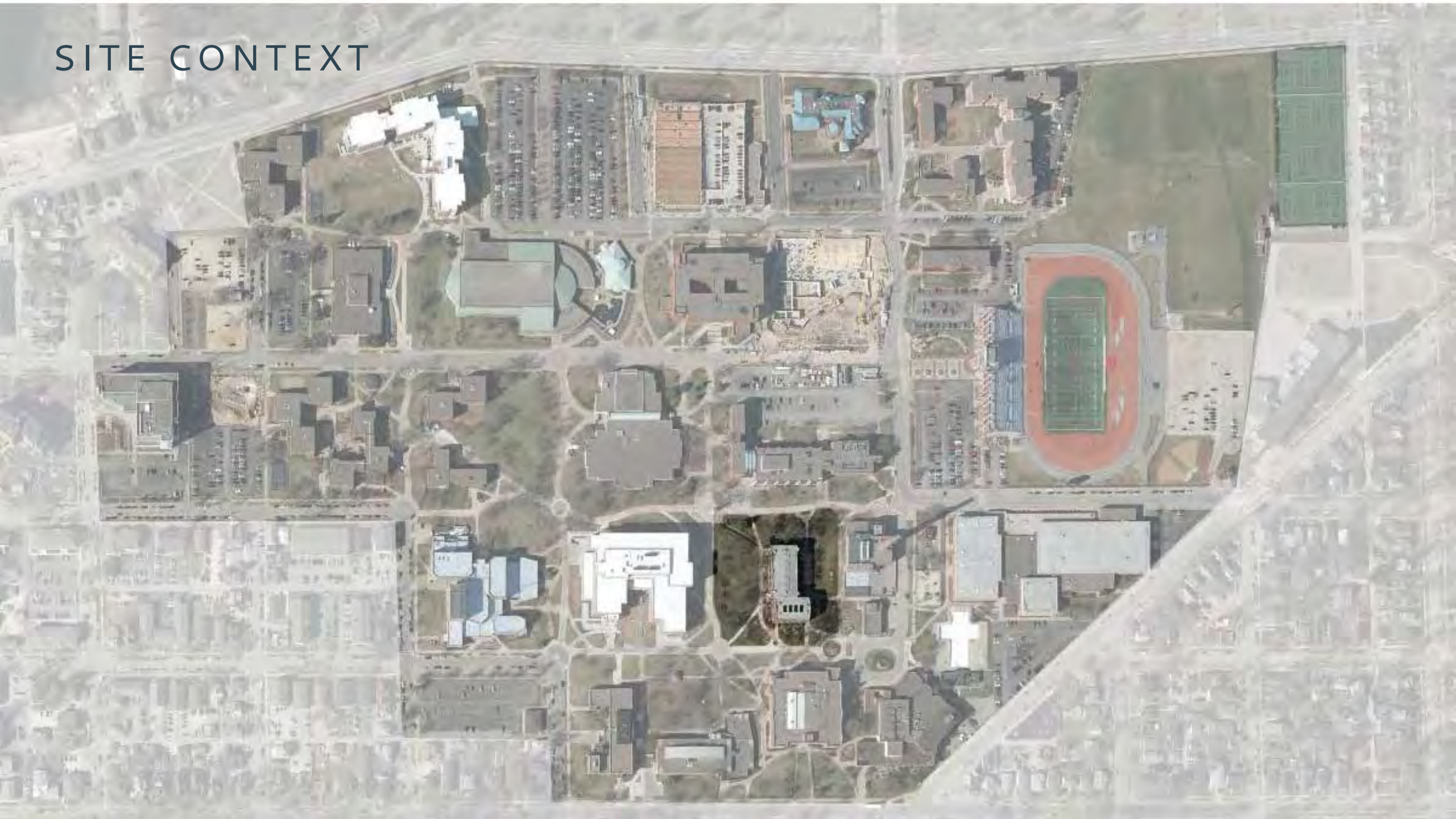


OFFICE TOO TRANSPARENT; LIKE CONCEPT WITH A GLASS SIDE WALL

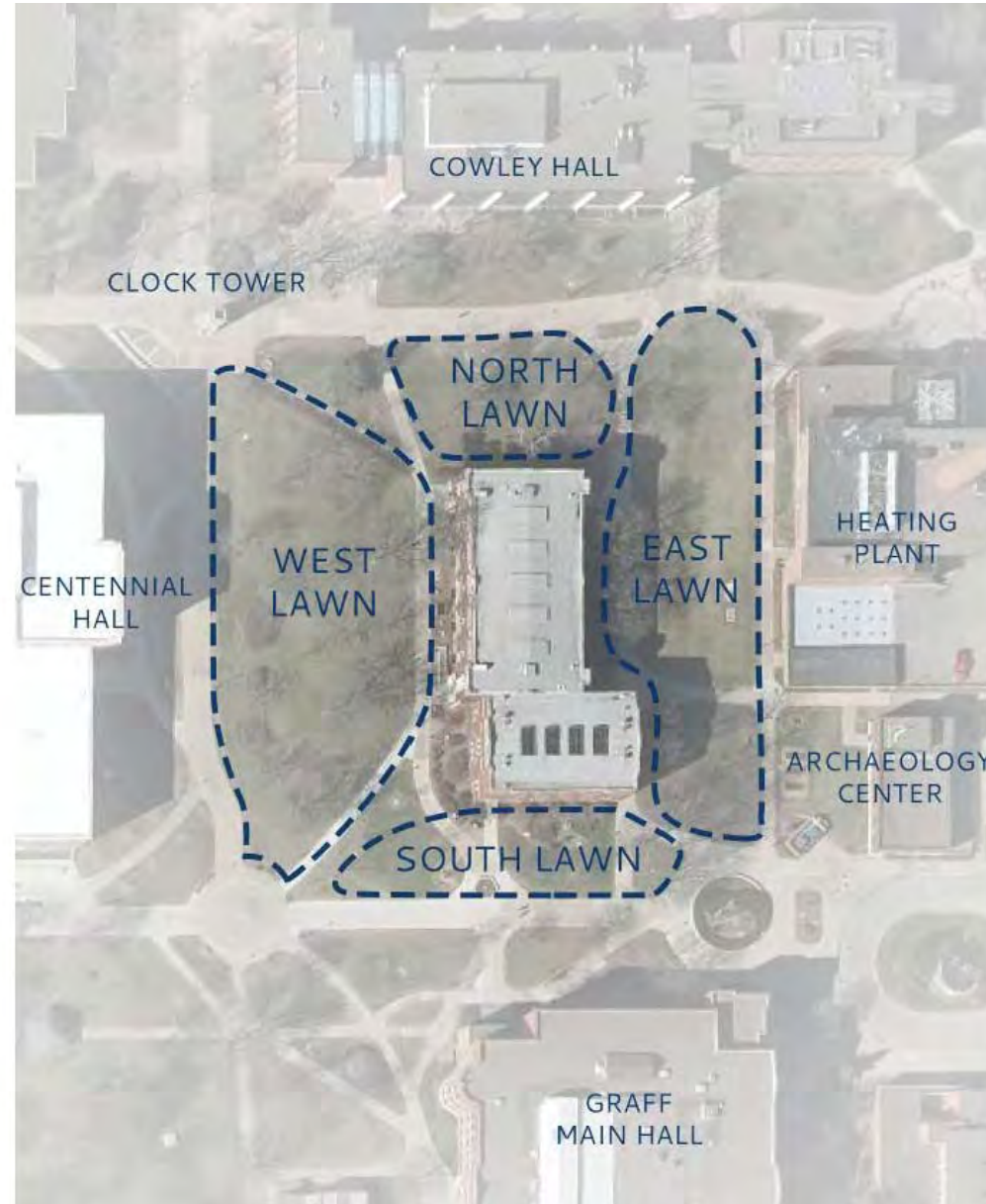
07



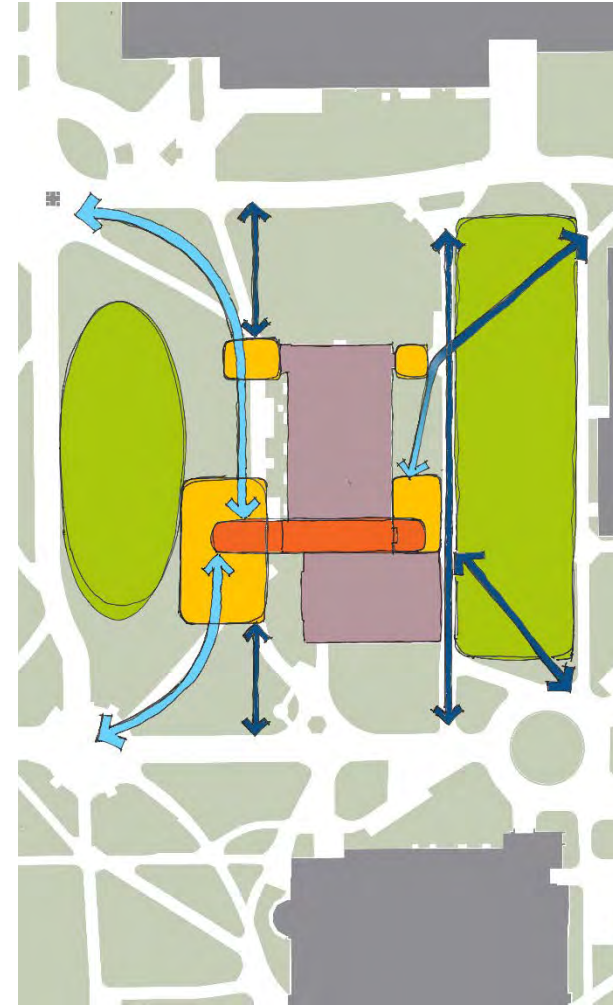
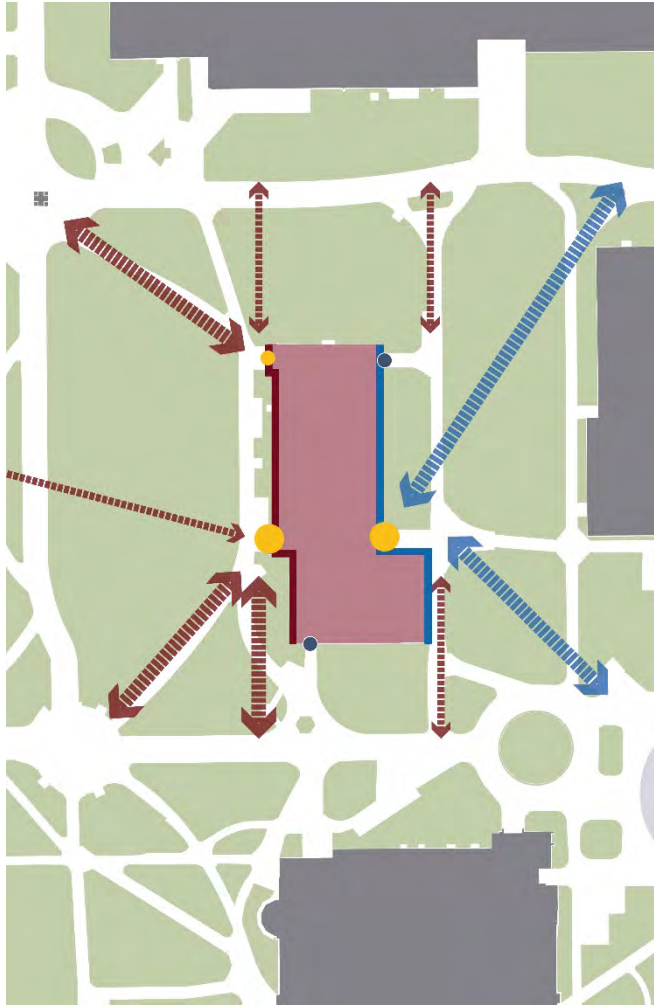
SITE CONTEXT



SITE CONTEXT



SITE CONTEXT



EXTERIOR SPACES

SITE DESIGN - WEST



SITE DESIGN - WEST



SITE DESIGN - WEST



SITE DESIGN - EAST

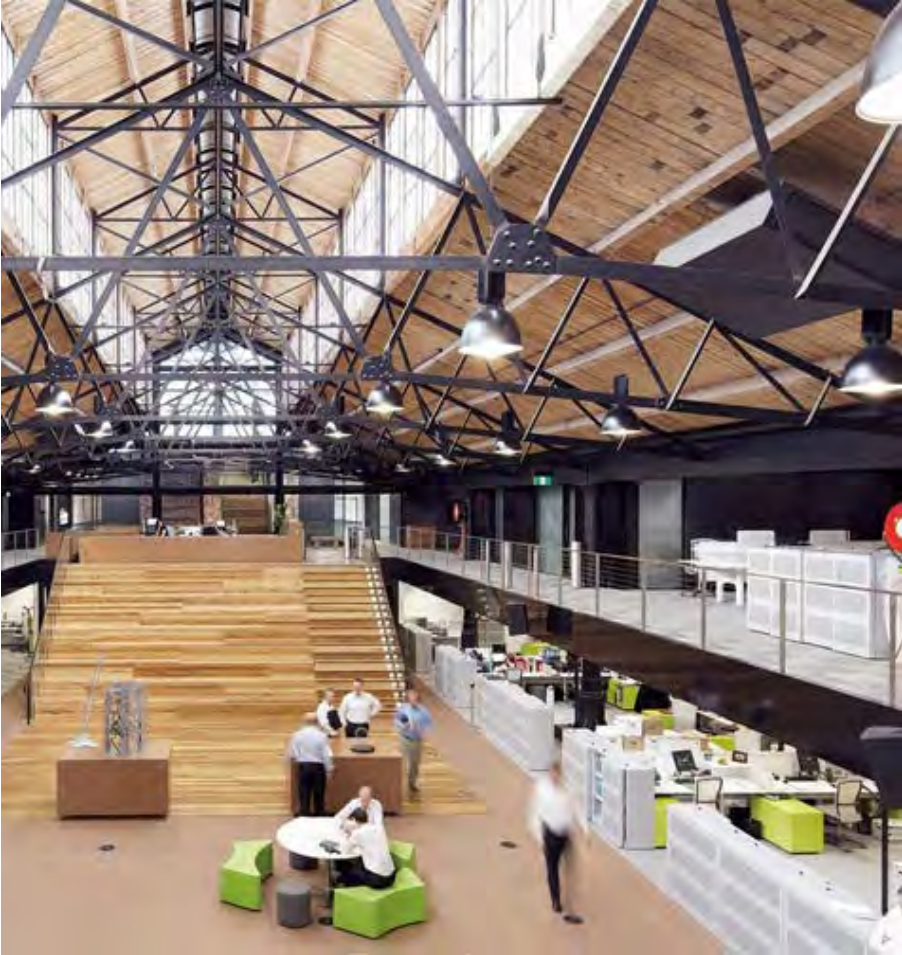


SITE DESIGN - EAST

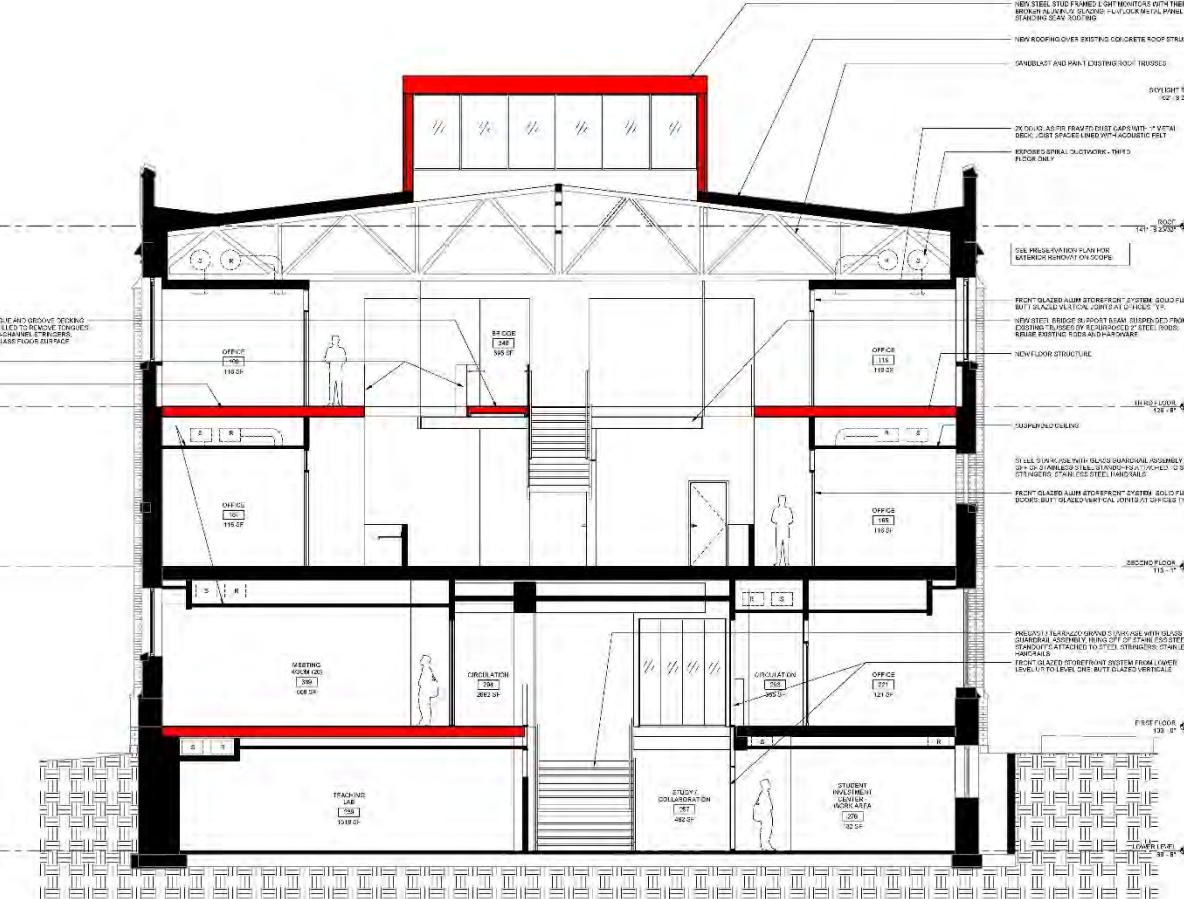


INTERIOR SPACES

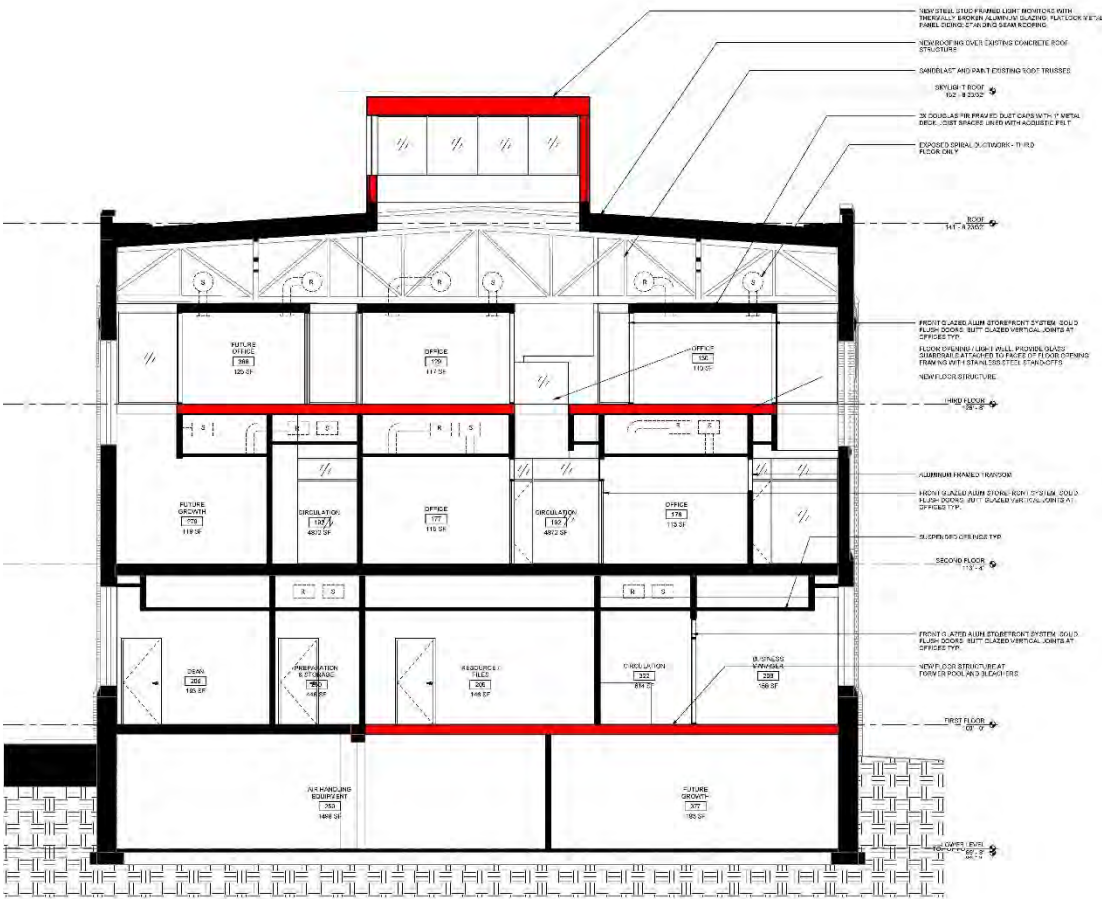
ADAPTIVE REUSE



INTERIOR SPACE PLANNING



1916 BUILDING SECTION



1930 BUILDING SECTION

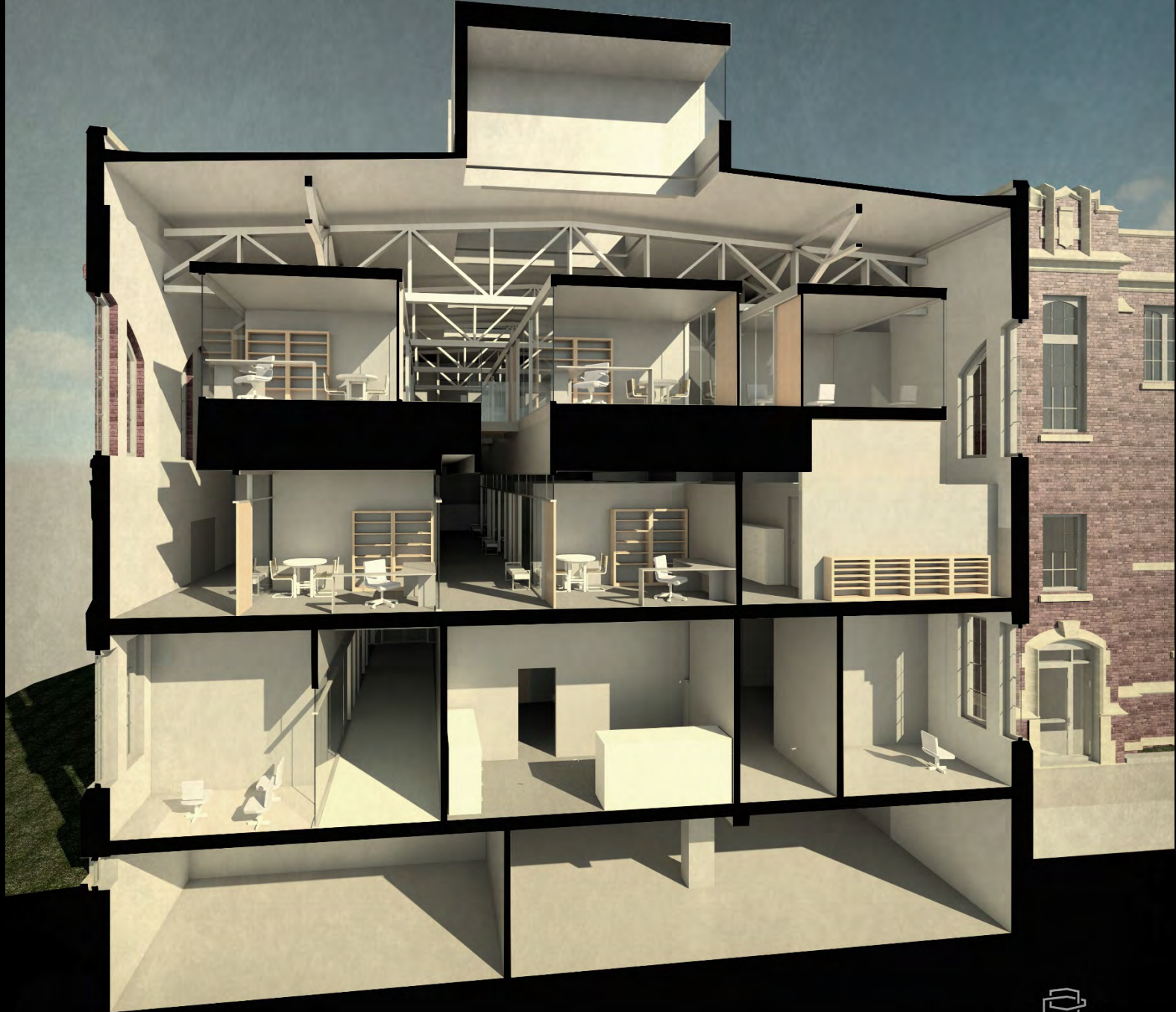
With gymnastics
Train Like
UNDERDOG
Compete like a
CHAMPION!

Get Your
Head
In The Game!
What Team?...
EAGLES

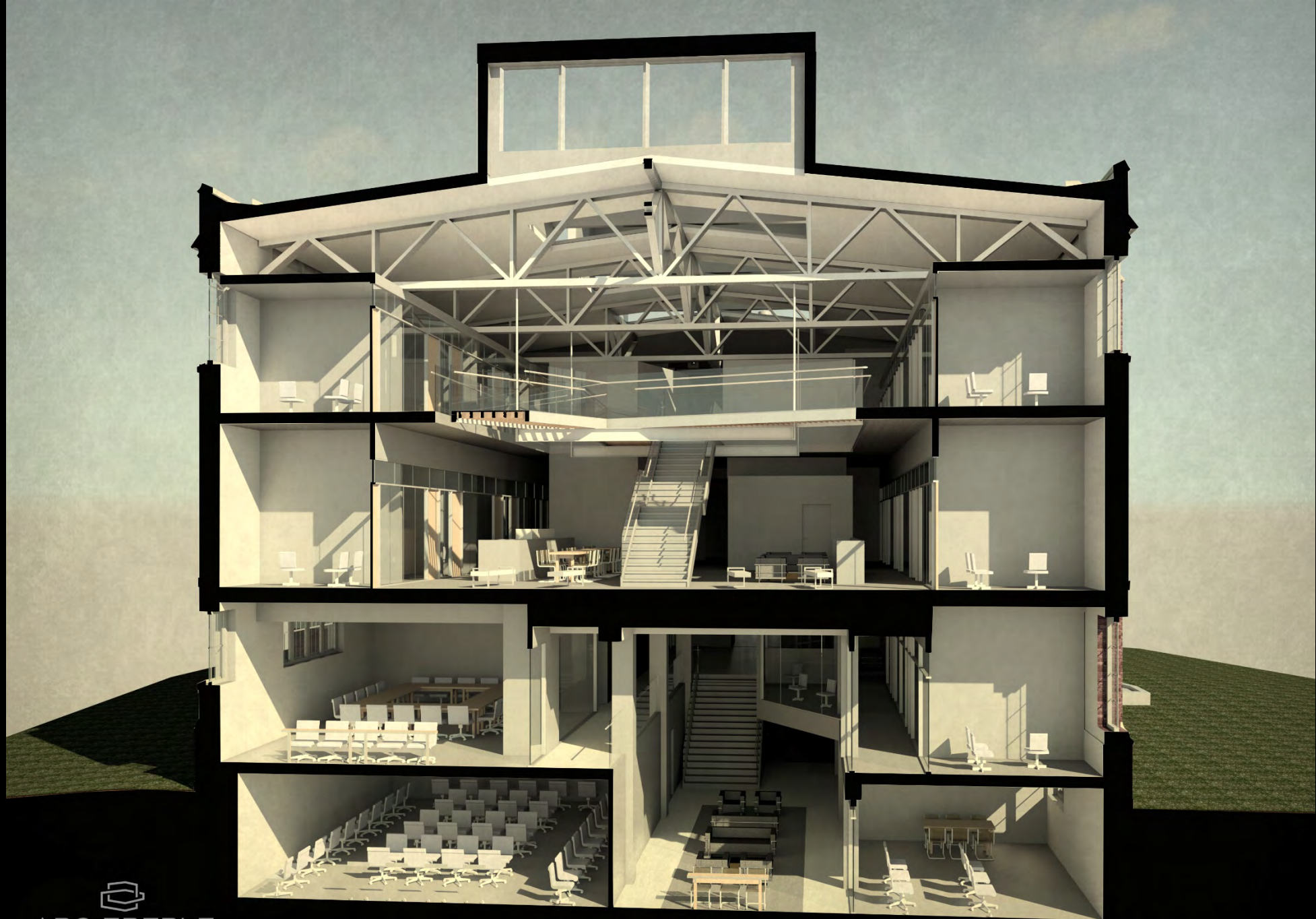
DRIVEN

Trampoline
For Classes
Only









FIRST FLOOR



FIRST FLOOR

- | | | |
|--|--|--|
| ■ Academic Space | ■ Meeting Rooms | ■ Study Space |
| ■ Dean's Office | ■ Office | ■ Suite Circulation |
| ■ Dean's Office Support | ■ Office Service | ■ Support |
| ■ Future Growth | ■ SBDC | |
| ■ Mechanical / Electrical | ■ SBDC Support | |



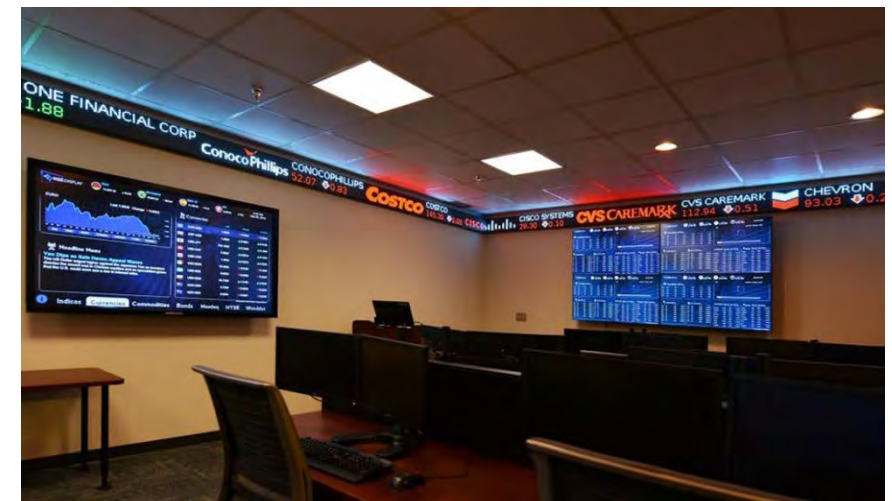


ARO EBERLE
ARCHITECTS





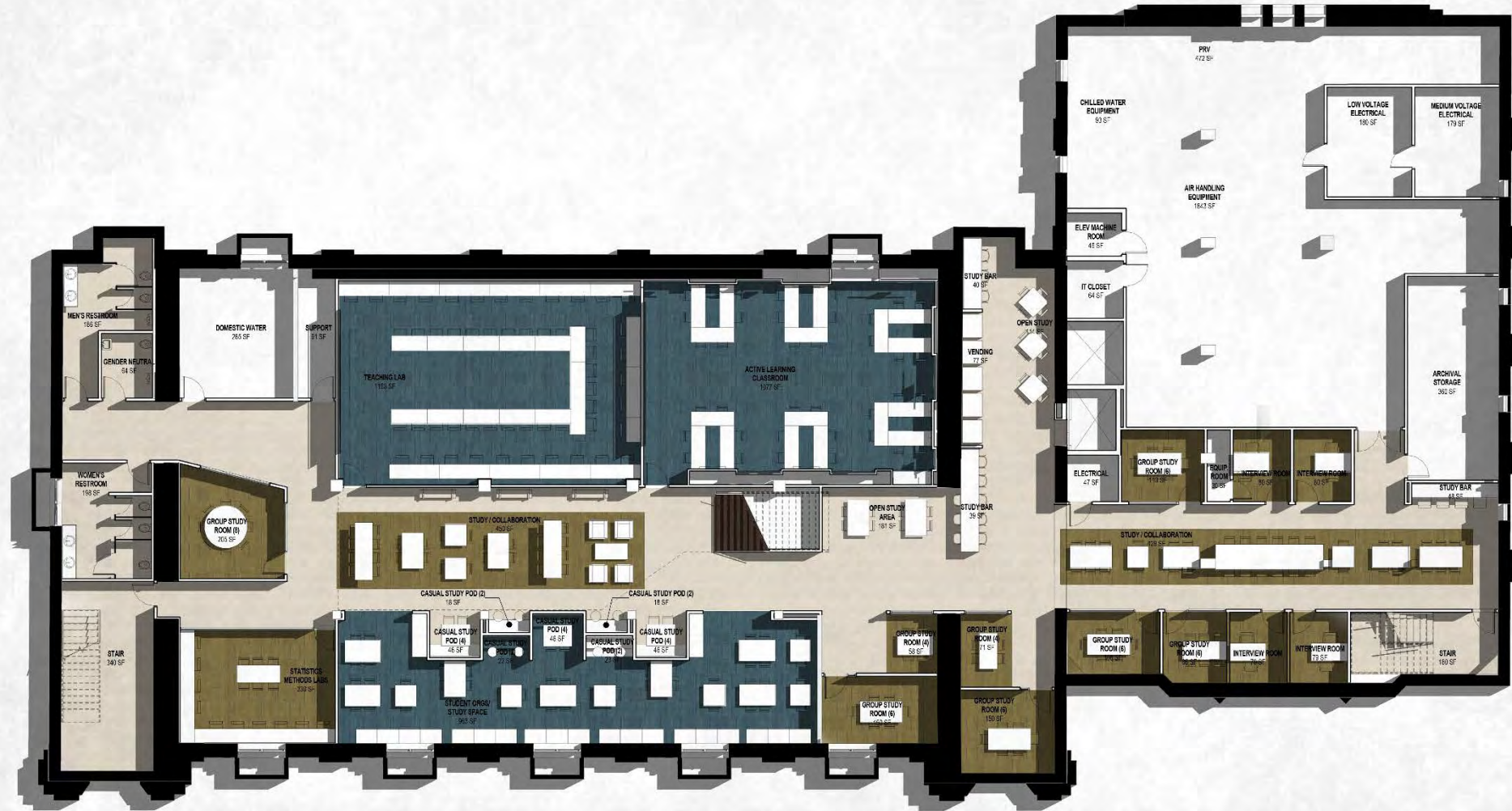
STUDENT INVESTMENT CENTER PRECEDENTS



MEETING ROOM PRECEDENTS



LOWER LEVEL



LOWER LEVEL

- | | | |
|--|--|--|
| Academic Space | Meeting Rooms | Study Space |
| Dean's Office | Office | Suite Circulation |
| Dean's Office Support | Office Service | Support |
| Future Growth | SBDC | |
| Mechanical / Electrical | SBDC Support | |



TEACHING LAB PRECEDENT



ACTIVE LEARNING PRECEDENT



GROUP STUDY PRECEDENTS



GROUP STUDY PRECEDENTS



SECOND FLOOR



SECOND FLOOR

- Academic Space
- Dean's Office
- Dean's Office Support
- Future Growth
- Mechanical / Electrical
- Meeting Rooms
- Office
- Office Service
- SBDC
- SBDC Support
- Study Space
- Suite Circulation
- Support





THIRD FLOOR

- Academic Space
- Meeting Rooms
- Study Space
- Dean's Office
- Office
- Suite Circulation
- Dean's Office Support
- Office Service
- Support
- Future Growth
- SBDC
- Mechanical / Electrical
- SBDC Support





ARO EBERLE
ARCHITECTS

UNIVERSITY of WISCONSIN
LA CROSSE

WITTICH HALL RENOVATION
10% CONCEPT DESIGN REPORT – VOLUME 1 OF 3

DFD Project No. 14120

FINAL DRAFT

November 1, 2016

