

meeting minutes

Project No.: R3001.405.00 **File No.(s):** 0.10.0

Date Prepared: December 15, 2017

Meeting Date: December 12, 2017

Project Name: University of Wisconsin-La Crosse- New Student Fieldhouse & Soccer Support Facility (DFD 1512I)

Subject: Executive Committee Meeting

Meeting Attendees: See meeting attendance list attached

Comments, additions, or corrections to this memo should be communicated in writing to RDG Planning & Design within seven (7) days of receipt. If no comments are received within that period, this memo will be assumed accurate and filed as part of the permanent record for this project.

Discussion:

See attached exhibits discussed and marked up during the meeting for additional meeting documentation.

- 1) JP reviewed the Workshop agenda
 - a) Project still over budget due to square footage increases
 - b) Design Team received review comments on Monday 12/11 from BH which were based on the preliminary design information sent out last week by RDG. Some comments have been incorporated in today's presentation, some are still open and require more discussion.
 - c) UW will identify dates for the DFD 10% review in Madison. Design Team requests dates in mid to late January.
 - d) The Design Team requested examples of what are considered successful DFD 10% Design Review presentations. DP said he would check with Beth Alderman for examples.
- 2) NH reviewed the Floor Plans
 - a) Bob asked why the entry was recessed. Main reason was to reduce square footage to help get the project back within budget.
 - b) DP asked why Check-In station has 3 work stations. NH noted 2 is the correct number; 1 serving the free zone, and one for the secured zone beyond the turnstiles. One station will be deleted from Check In.
 - c) The presented floor plan shows the number of Athletic lockers per Workshop 3 direction. Size is 24" wide x 30" deep for all Athletic lockers. The Athletic locker rooms however do not accommodate the soft seating, pc stations, etc. noted by BH in his review comments. Kim Blum sent the Design Team (via DP) a new list of number of lockers for each team on December 11th with higher number of lockers than what is being shown. BH asked for the rationale for the increase. The number will be verified by UWL before being incorporated into the floor plans.
 - d) JP asked if laundry should be included in the building and PD and BH said it is desirable to include. It is acceptable if it is part of another room such as Storage (i.e., it does not have to be a separate room). Space for a commercial grade washer and two dryers are shown as part of the Check-In Storage.
 - e) DP said 1,200 seats are a minimum to host NCAA T&F Finals. Program calls for 1,500 spectator seats which will be a combination of retractable and tilt and roll seating. The correct seating count needs to be shown.
 - f) BH asked where mobile Tilt'n'Roll bleachers can be stored. JP noted along West exterior wall or in retractable seating recess when in stored/ retracted position.
 - g) BH noted the generator's enclosure should be masonry.
 - h) BH confirmed two toilets are required on Level 2.



- i) BH noted 8' deep stretching area at the north straightaway of the Jogging Track is desired. Design team will work with mechanical engineers to appropriately size mechanical rooms.
 - j) JP reviewed an alternative locker floor plans with lounge / meeting / gathering space included; each with a separate toilet/shower for all lockers which increases future flexibility (teams can be of either sex if self-contained).
 - i) Layout includes Kim Blum's latest number of locker count (higher than original target)
 - ii) This scheme increased the square footage by almost 5,000 SF which equates to about \$1.4M. This would be an unacceptable increase to the budget.
 - k) Locker Room Concept decisions
 - i) Eliminate Baseball
 - ii) Eliminate Softball
 - iii) Provide shared shower and toilet facilities, where possible
 - iv) Achieve the now-approved locker count for each sport
 - (1) Women's Track & Field/ Cross Country: 100 lockers
 - (2) Soccer: 30 lockers
 - (3) Lacrosse: 30 lockers
 - (4) Men's Track & Field/ Cross Country: 75 lockers
 - v) Create Locker Room spaces & designs consistent with a premier Collegiate Athletics Program
 - l) JP noted storage has been laid out based on athletic and Rec's inventories. Some are smaller than required, some are larger than required. Design team believe storage is too large overall, will work to get area on target.
- 3) Building exterior was reviewed by HT
- a) BH said the design was coming along nicely and has a good WOW factor.
 - b) For the east elevation, consider that the school may not always be there in the future.
 - c) BH believed the clerestory glass at the Fieldhouse "bump up" roof was important for daylighting
 - d) Stone banding might be "overdone." Work to balance it out
 - e) Adjust the main entry vestibule
 - i) More classical envelope. Less modern.
 - f) Okay to eliminate trapezoidal windows at the south wall of the Fieldhouse, but okay either way
 - i) Look at an arched top opening?
 - ii) Not likely needed for overall natural light
 - iii) Look at, and present options to UWL for their review
- 4) Site Plan was review by NN
- a) Option 2 is preferred by Executive Committee
 - b) All stormwater will need to be piped and drained from this site since each existing City well head has a 400' radius of restricted areas.
 - c) NN to contact fire department regarding firefighting clear zone requirements around the building
 - d) NN is researching storm water detention. Storm water detention into the ground is not possible due to proximity of the existing City wells (400' radius clear is required).
 - e) NN will develop a more functional vehicular connection between Pine Street and the N-S path along the west side of the Fieldhouse.

END OF MEETING MINUTES



meeting attendance

Date: December 12, 2017 **Time:** 8:00a – 10:00a **Subject:** Executive Committee Meeting
Project: University of Wisconsin–La Crosse New Student Fieldhouse & Soccer Support Facility – DFD 15I2I
Project No.: 3001.405.00

✓	Name	Organization Department	Phone	E-mail
✓	Doug Pearson Executive Director	UW–La Crosse Planning & Construction	608.785.8019	dpearson@uwlax.edu
✓	Bob Hetzel Vice Chancellor	UW–La Crosse Administration & Finance	608.785.6491	bhetzel@uwlax.edu
✓	Beth Alderman Project Manager	Division of Facilities Development (DFD)	608.266.1796	beth.alderman@wisconsin.gov
	Cathy O'Hara Weiss Facility Architect + Planner	UW System Administration	608.263.4417	cweiss@uwsa.edu
	Kim Blum Director of Athletics	UW–La Crosse Athletics	608.785.8616	kblum@uwlax.edu
	Erin Thacker Deputy Director of Athletics	UW–La Crosse Athletics	608.785.5223	ethacker@uwlax.edu
	Sue White Director–Recreational Sports	UW–La Crosse Rec Sports	608.785.6529	swhite@uwlax.edu
	Mark Gibson ESS Department Chair	UW–La Crosse Exercise & Sport Science	608.785.8171	mkgibson@uwlax.edu
	Jason Murphy Women's Soccer HC, Fac. Dir.	UW–La Crosse Athletics	608.785.5175	jmurphy@uwlax.edu
	Josh Buchholtz Men's T&F HC, Asc. Fac. Dir.	UW–La Crosse Athletics	608.785.8622	jbuchholtz@uwlax.edu
	Nickolas Davis Women's Track & Field HC	UW–La Crosse Athletics	608.785.6531	ndavis@uwlax.edu
	Bill Hehli Women's & Men's Tennis HC	UW–La Crosse Athletics	608.785.8676	whehli@uwlax.edu
	Chris Schwarz Baseball HC	UW–La Crosse Athletics	608.785.6540	cschwarz@uwlax.edu
	Chris Helixon Softball HC	UW–La Crosse Athletics	608.785.6536	chelixon@uwlax.edu
	Mo McAlpine Assoc. Director, Rec Sports	UW–La Crosse Recreational Eagle Center	608.785.8698	mmcalpine@uwlax.edu
	Nathan Barnhart Asst. Director, Rec Sports	UW–La Crosse Recreational Eagle Center	608.785.6530	nbarnhart@uwlax.edu
	Milo Velimirovic Is Net Service Senior	UW–La Crosse Information Tech Svcs	608.785.6618	mvelimirovic@uwlax.edu
	Mark Valenti Asst. Dir. Academic Tech Svcs	UW–La Crosse Information Tech Svcs	608.785.5475	mvalenti@uwlax.edu
	Caleb Zick Network Specialist	UW–La Crosse Information Tech Svcs	608.785.8815	czick@uwlax.edu
	Dave Anderson Custodial Srv Pro Supervisor	UW–La Crosse Information Custodial Service	608.785.7593	danderson2@uwlax.edu



✓	Name	Organization Department	Phone	E-mail
	Scott Brown Building Maintenance Manager	UW-La Crosse Facilities Planning & Mgmt	608.785.8590	sbrown2@uwlax.edu
	Dennis Rodenberg Senior Facilities Engineer	UW-La Crosse Facilities Planning & Mgmt	608.785.8592	drozenberg@uwlax.edu
	Tim Merrell Power Plant Superintendent	UW-La Crosse Facilities Planning & Mgmt	608.785.8710	tmerrell@uwlax.edu
	Daniel Quam Business Manager	UW-La Crosse Facilities Planning & Mgmt	608.785.8642	dquam@uwlax.edu
	Tony Meidl Grounds Services Manager	UW-La Crosse Facilities Planning & Mgmt	608.785.8591	tameidl@uwlax.edu
	Kim Radtke Exec Dir, LEHP/Clinical EP	UW-La Crosse Facilities Exercise & Sport Sci	608.785.8188	kradtke@uwlax.edu
	Nathan Castillo	Pro Audio	414.476.1011	nathan@proaudiodesigns.com
✓	Nate Novak Project Manager – Civil/LA	Smith Group JJR	608.254.1177	Nate.novak@smithgroupjjr.com
	Larry Palank Project Manager – Cost	Hunzinger Construction Company	262.780.9709	lpalank@hunzinger.com
	Josh Nickols Project Engineer – Utilities	Ring & DuChateau	414.778.1700	jnickols@ringdu.com
	Art Meredith Low Voltage Systems Design	Ring & DuChateau	414.778.1700	ameredith@ringdu.com
	Ed Gill Senior Project Manager	Ring & DuChateau	414.778.1700	egill@ringdu.com
	Chris Ulm Project Manager	Ring & DuChateau	414.778.1700	culm@ringdu.com
✓	Kyle Schauf Project Manager	HSR Associates	608.785.4725	kschauf@hsrassociates.com
✓	Doug Ramsey Principal-in-Charge	HSR Associates	608.785.4710	dramsey@hsrassociates.com
✓	Hoang Tran Project Architect	RDG Planning & Design	515.309.3263	htran@rdgusa.com
✓	Nathan Harris Project Architect	RDG Planning & Design	515.309.3244	nharris@rdgusa.com
✓	Marty Miller Project Manager	RDG Planning & Design	515.309.3218	mmiller@rdgusa.com
✓	Jack Patton Principal	RDG Planning & Design	515.309.3207	jpatton@rdgusa.com



Workshop Objectives

Gather final design comments prior to DFD 10% Peer Review

- Floor plans
- Exterior image
- Site Plan

Confirm Budget and Program

Confirm Schedule

Agenda (120 Minutes max)

Review the Design

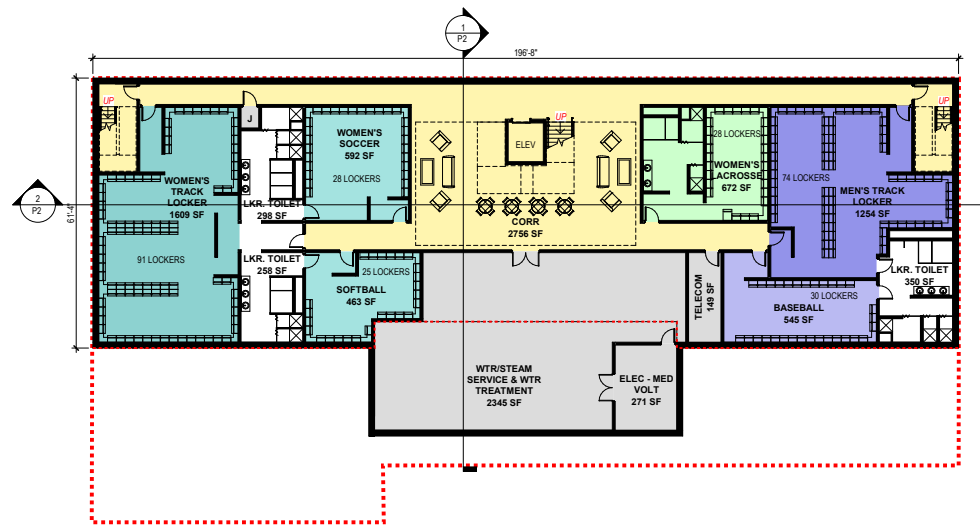
Seeking Committee Critique and Input



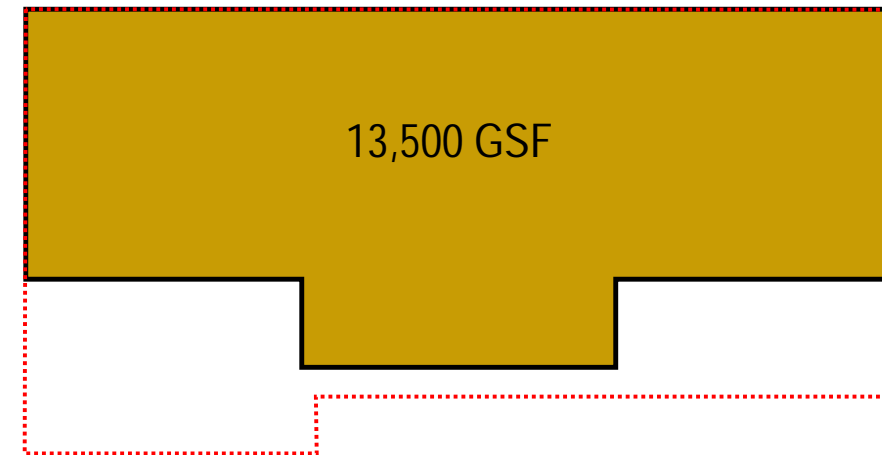
Preliminary Project Schedule

LOCATION	TASK	DATE	DURATION
UWL	Kick-off Meeting w/ Exec Comm	8.24.17	1.5 hours
AE	DFD 10% Document Preparation	Sept 2018	4 months
UWL	Design Meetings w/ Executive Comm & Design Comm	9.20.17	1 Day
UWL	Design Workshop Sessions w/ Exec Comm, Design Comm & User Groups	10.17.17	2 Days
UWL	Design Workshop Sessions w/ Exec Comm, Design Comm & User Groups	11.14.17	2 Days
UWL	Design Workshop Sessions w/ Exec Comm, Design Comm & User Groups	Dec 2017	2 Days
AE/DFD	DFD 10% Peer Review in Madison	Jan 2018	1.5 hours
	Pause in Design	Jan 2018	5 months
AE	DFD 35% Document Preparation	June 2018	4 months
UWL	Design Meetings w/ Executive Comm & Design Comm	July 2018	1 Day
UWL	Design Meetings w/ Executive Comm & Design Comm	Aug 2018	1 Day
UWL	Design Meetings w/ Executive Comm & Design Comm	Sept 2018	1 Day
AE/DFD	DFD 35% Preliminary Design Submittal & Review of Documents	Oct 2018	2 Months
UWL	Design Meetings w/ Executive Comm & Design Comm	Nov 2018	1 Day
AE	DFD 100% Document Preparation	Dec 2018	6 months
UWL	Design Meetings w/ Executive Comm & Design Comm	Jan 2019	1 Day
UWL	Design Workshop Sessions w/ Exec Comm, Design Comm & User Groups	Feb 2019	1 Day
UWL	Design Meetings w/ Executive Comm & Design Comm	Mar 2019	1 Day
UWL	Design Meetings w/ Executive Comm & Design Comm	April 2019	1 Day
AE/DFD	DFD 100% Final Design Submittal & Review of Documents	June 2019	2 Months
MAD	BOR/SBC Authority to Construct	Aug 2019	3 Months
DFD	Release of Bidding Documents	Nov 2019	3 Months
DFD	Receipt of Bids & Release of Construction Contracts	Feb 2020	3 Months
UWL	Construction of New Facility	May 2020	22 Months
UWL	Substantial Completion	Mar 2022	1 Month
UWL	Occupancy	April 2022	3 Months
UWL	Final Completion	July 2022	4 Months

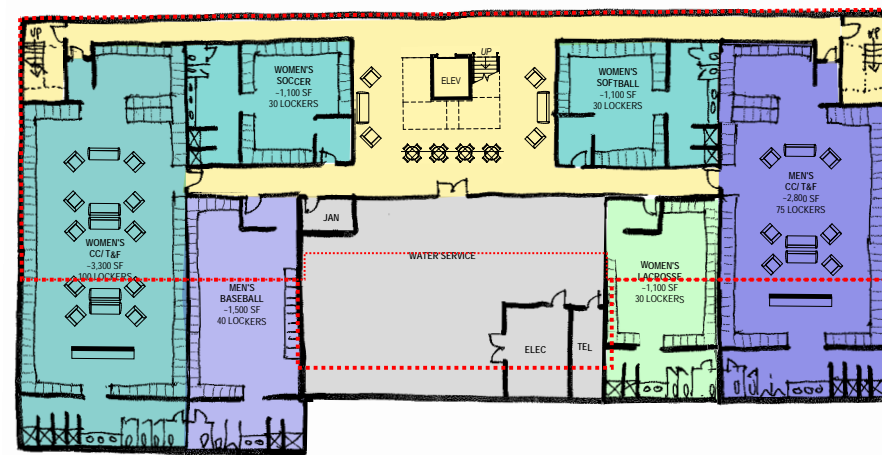




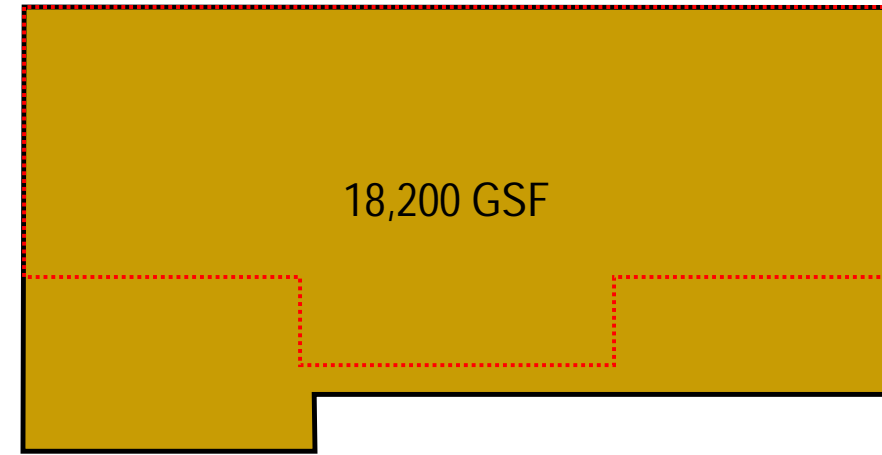
0 FLOOR PLAN - LEVEL 0
 1/16" = 1'-0"

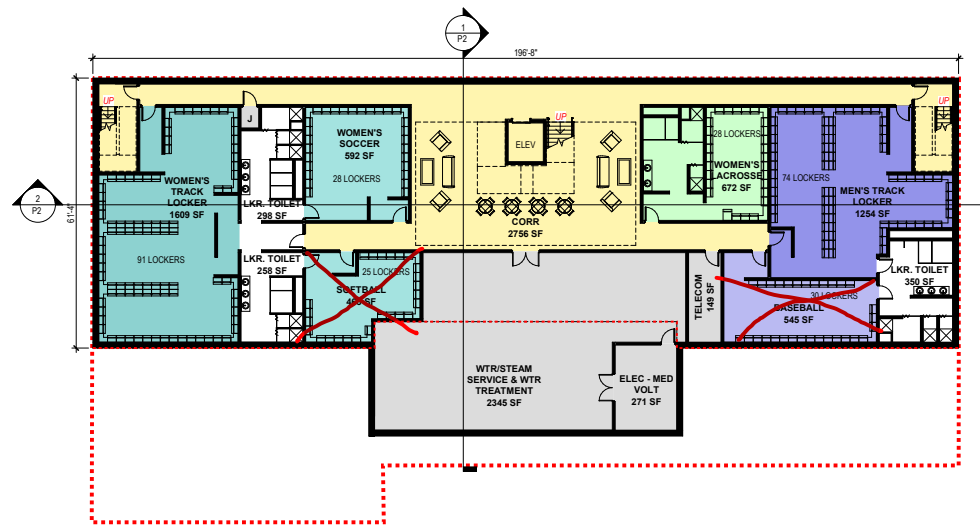


DIFFERENCE = 4,700 GSF

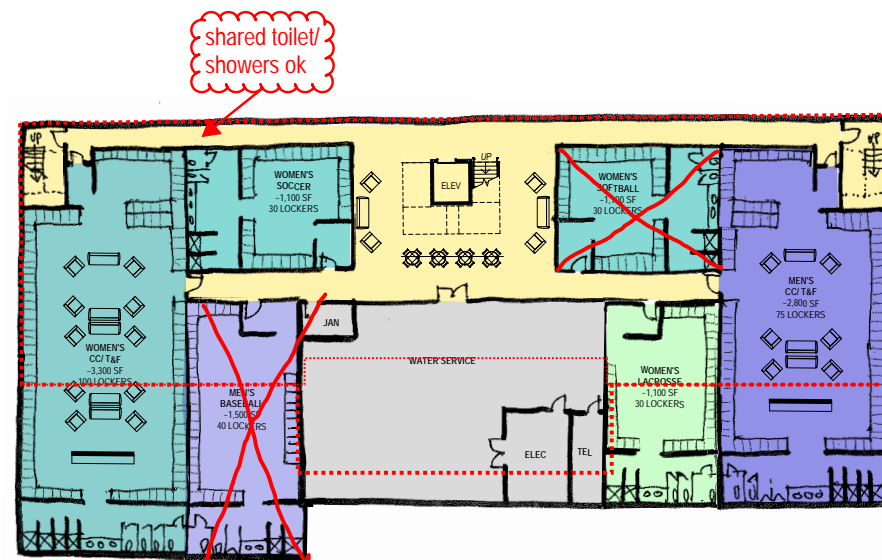


0 FLOOR PLAN - LEVEL 0 - ENLARGED LOCKER OPTION
 1/16" = 1'-0"





0 FLOOR PLAN - LEVEL 0
1/16" = 1'-0"



0 FLOOR PLAN - LEVEL 0 - ENLARGED LOCKER OPTION ✓
1/16" = 1'-0"

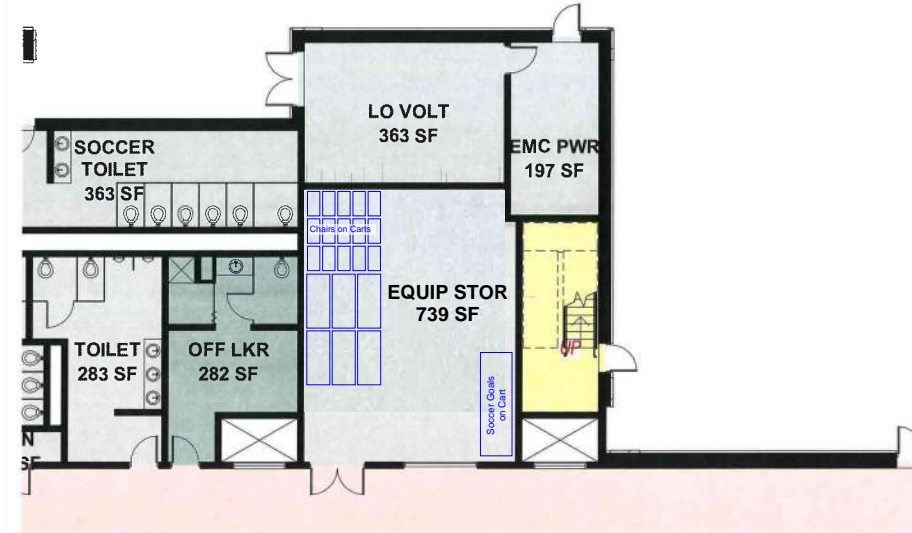
Athletic Locker Counts				
December 12, 2017				
Team	Target	Current	Resolved	
W Track	90	100		
W Soccer	25	30		
W Softball	25	30		
W Lacrosse	25	30		
M Track	75	75		
M Baseball	30	40		

UW La Crosse Field House Concept
Equipment Storage Diagrams
December 12, 2017



Floor Plan - Level 1, Storage Detail (North End, West)

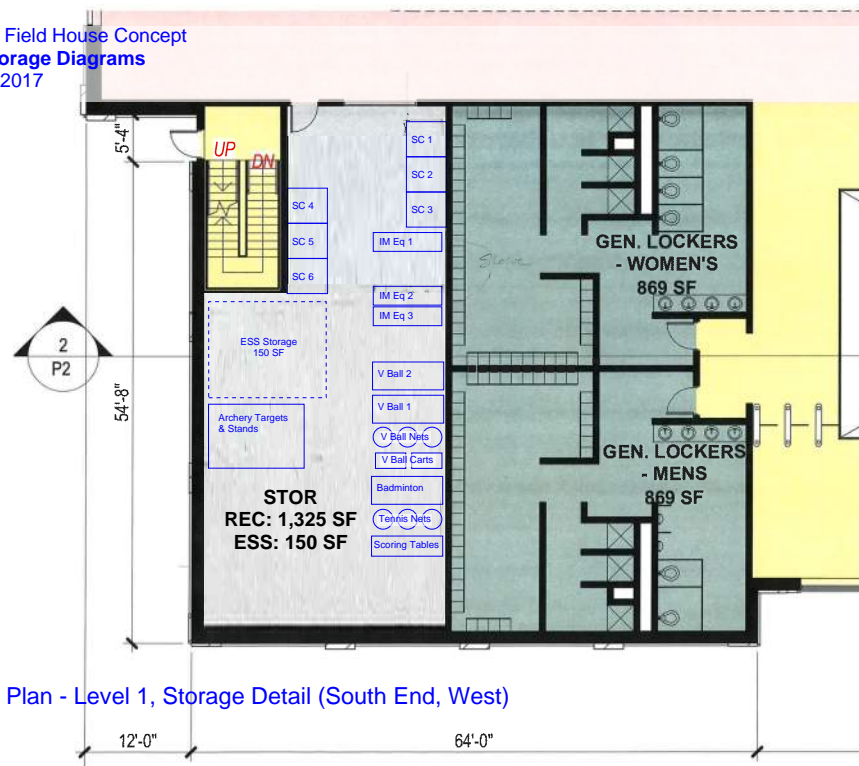
UW La Crosse Field House Concept
Equipment Storage Diagrams
December 12, 2017



Floor Plan - Level 1, Storage Detail (North End, East)

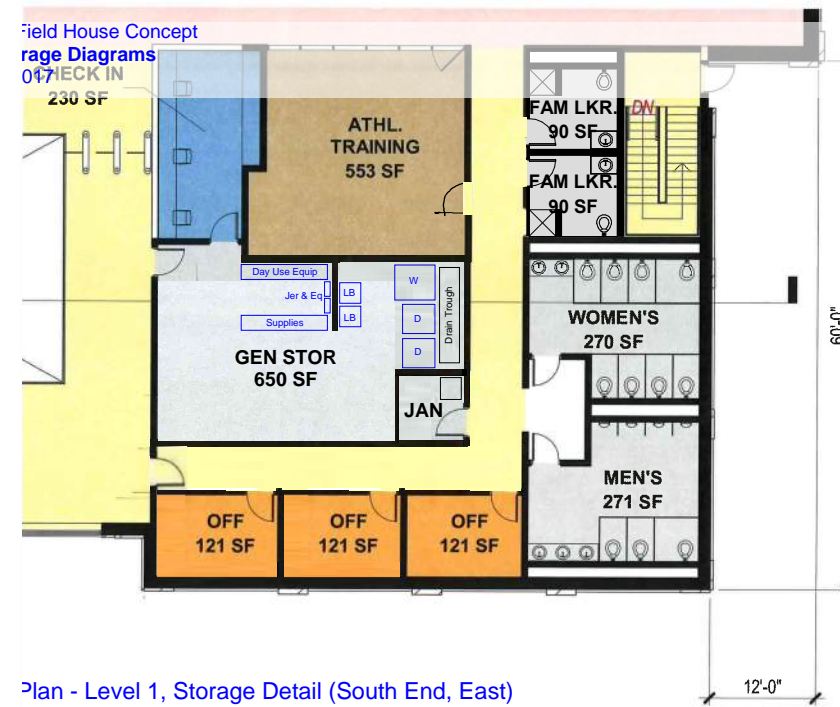


UW La Crosse Field House Concept
Equipment Storage Diagrams
December 12, 2017

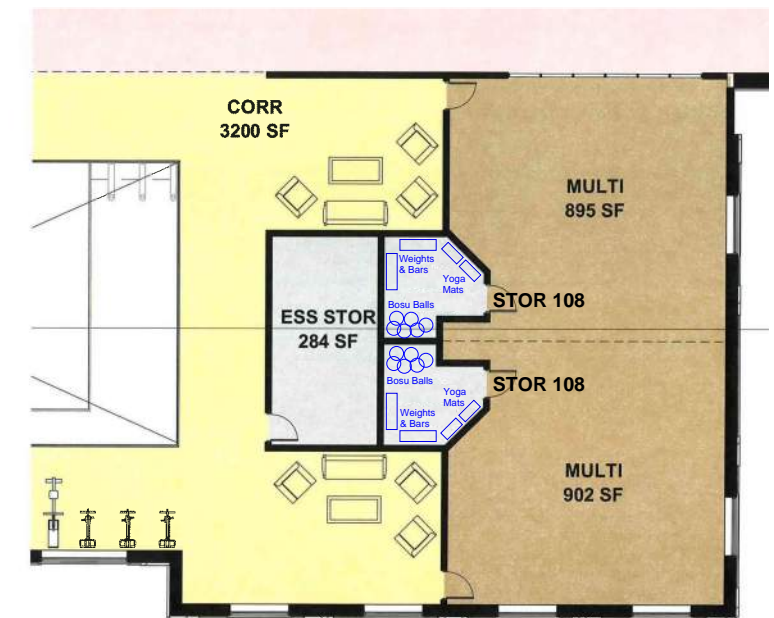


Floor Plan - Level 1, Storage Detail (South End, West)

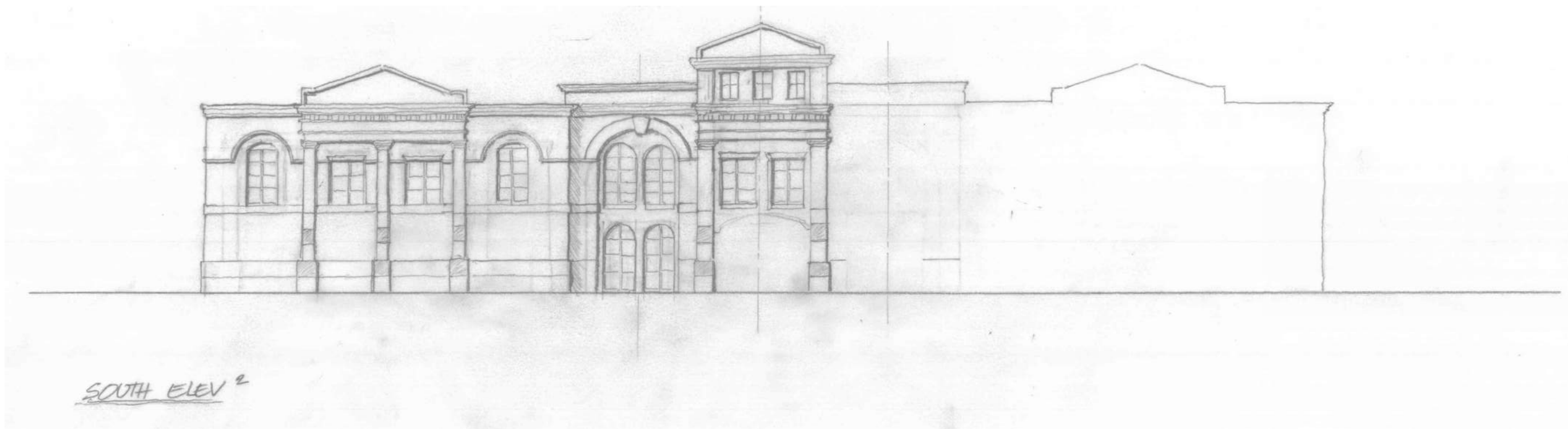
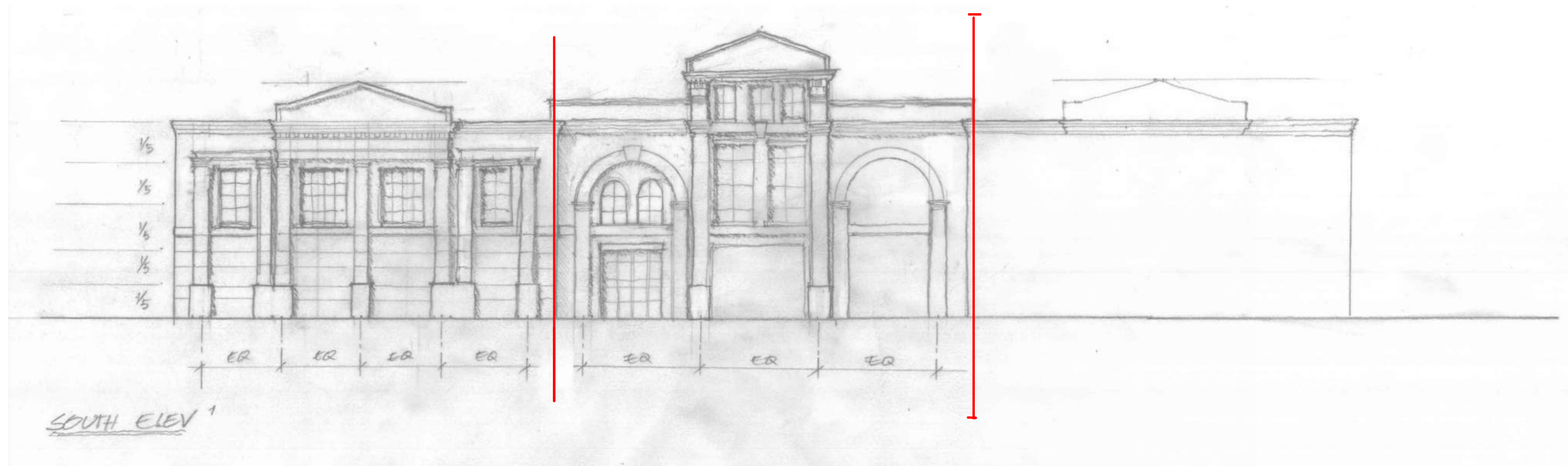
UW La Crosse Field House Concept
Equipment Storage Diagrams
December 12, 2017

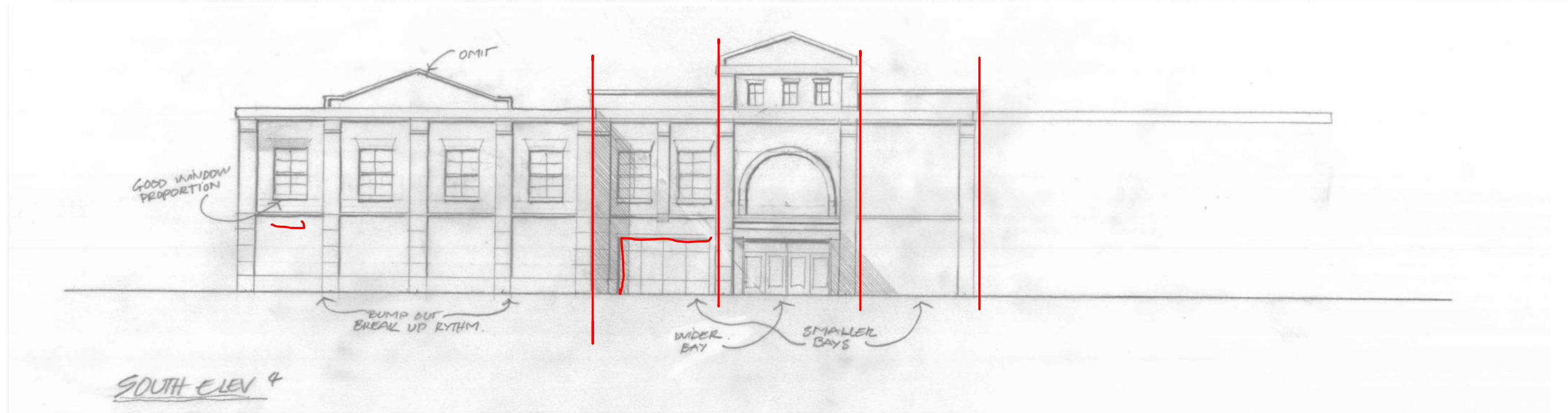
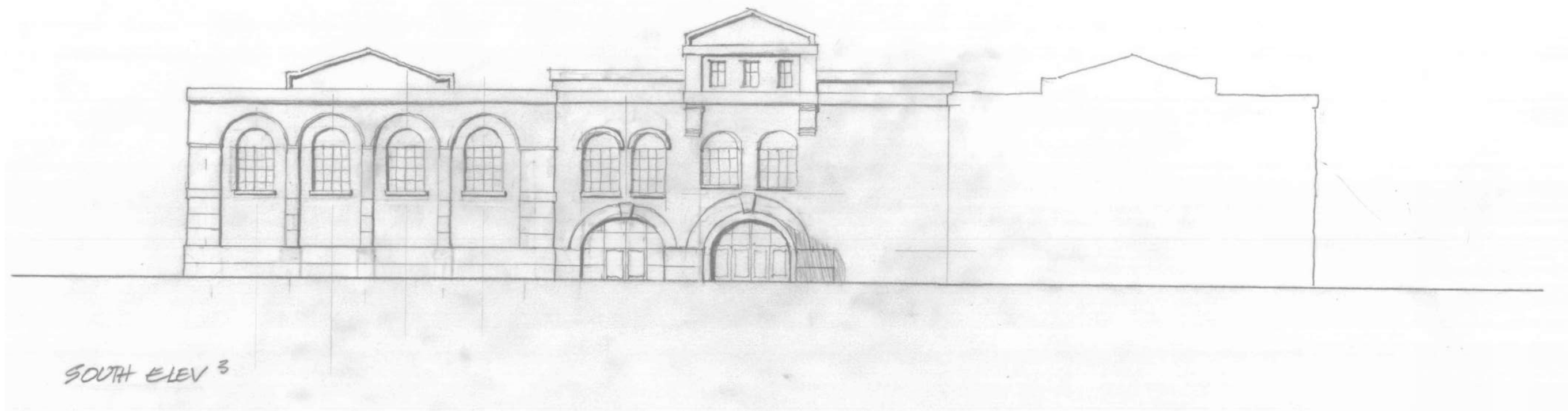


Floor Plan - Level 1, Storage Detail (South End, East)



Floor Plan - Level 2, Storage Detail (South End, East)



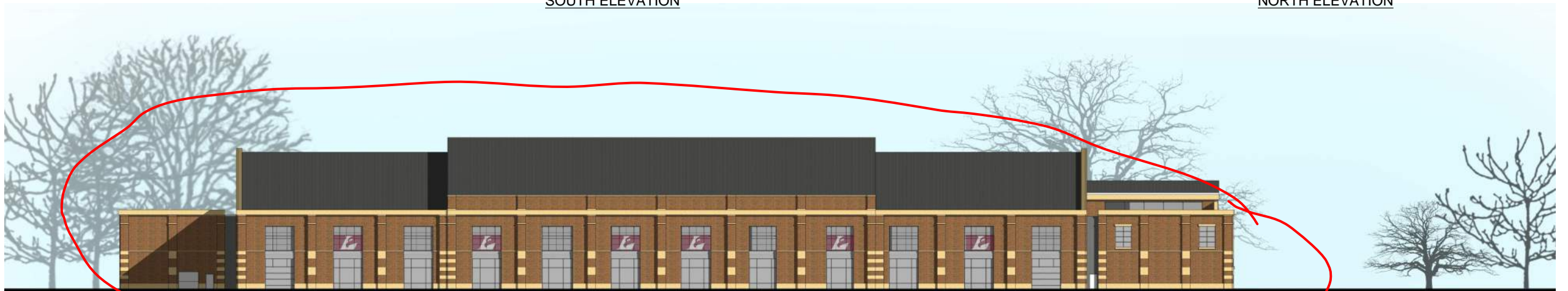






SOUTH ELEVATION

NORTH ELEVATION



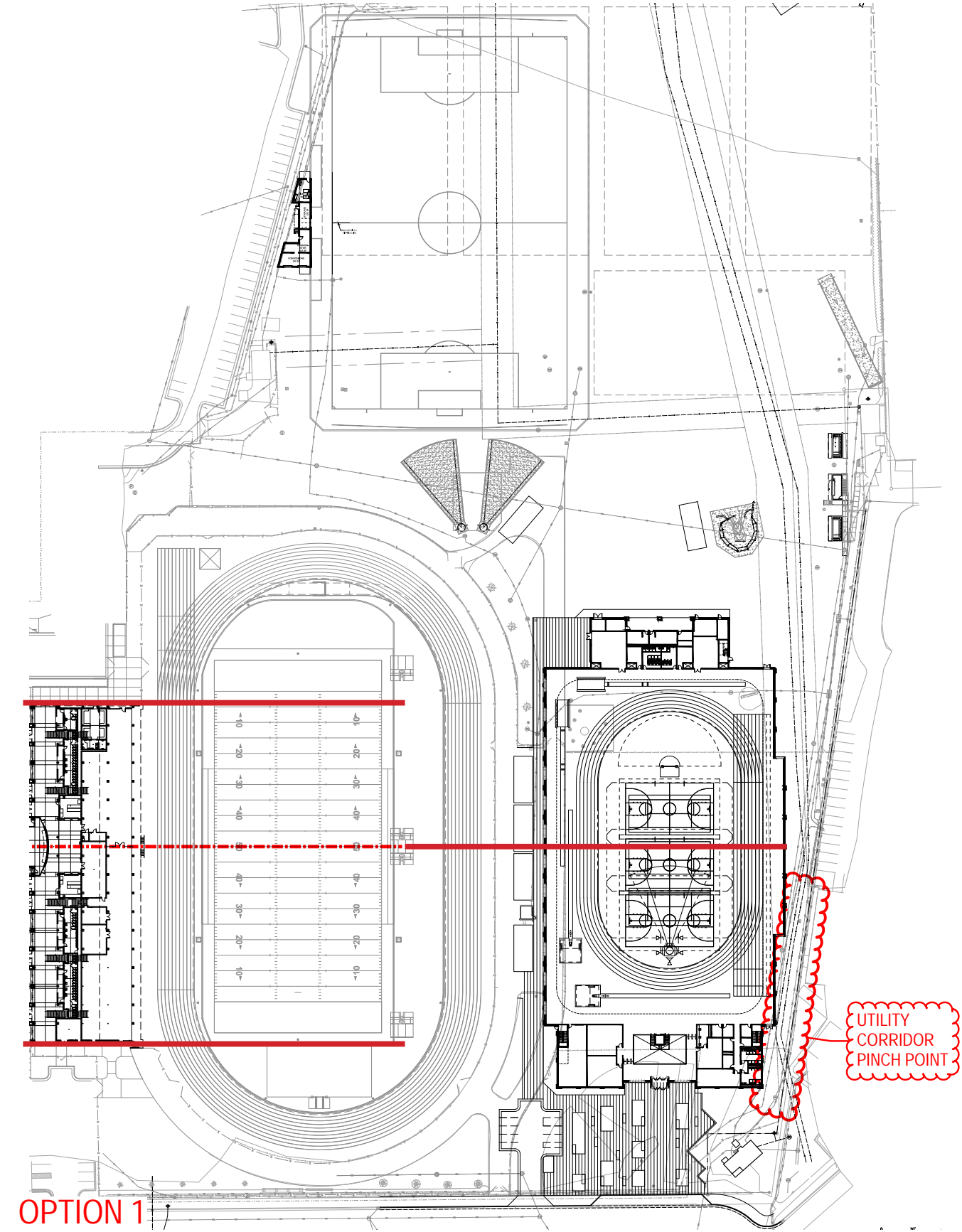
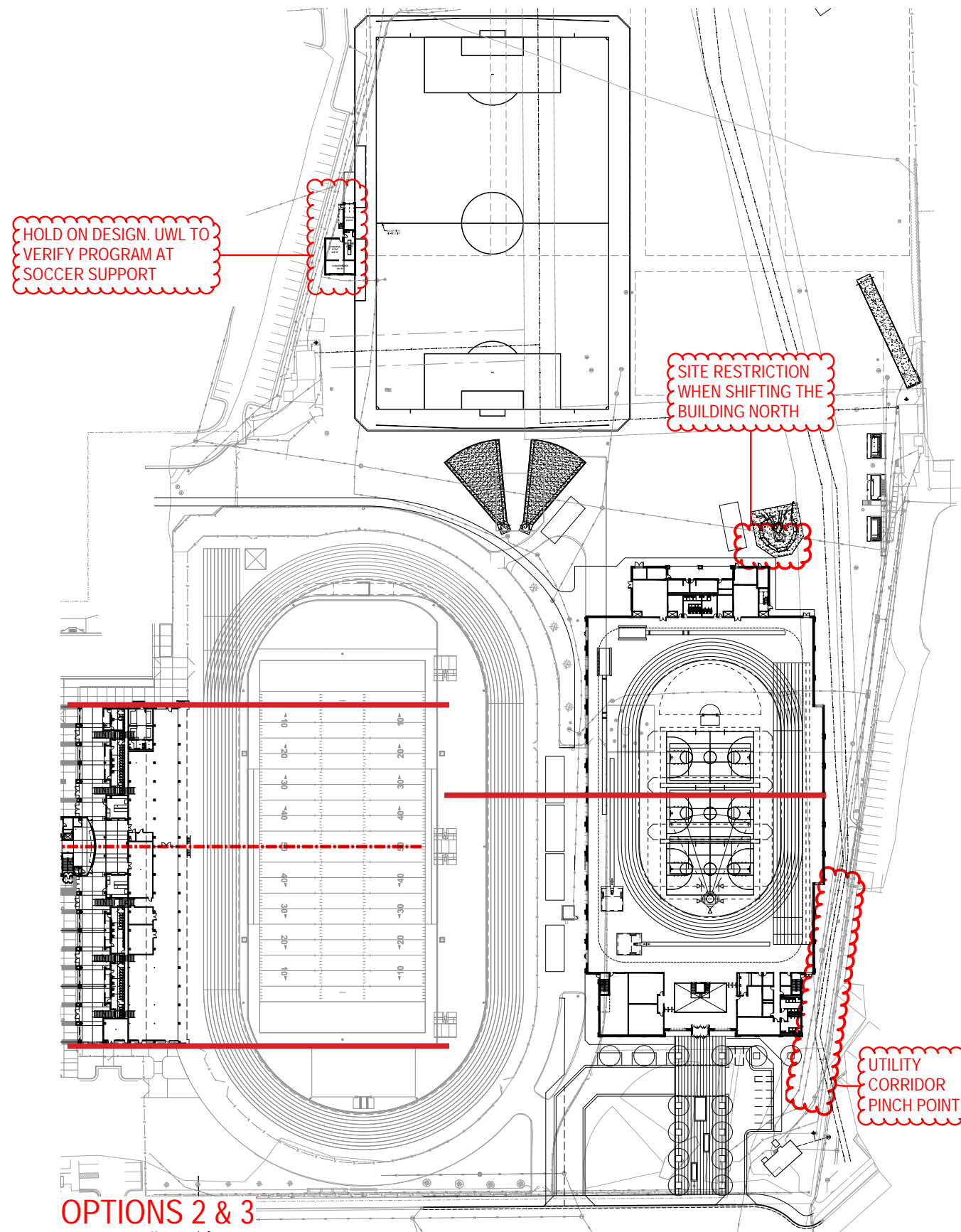
WEST ELEVATION

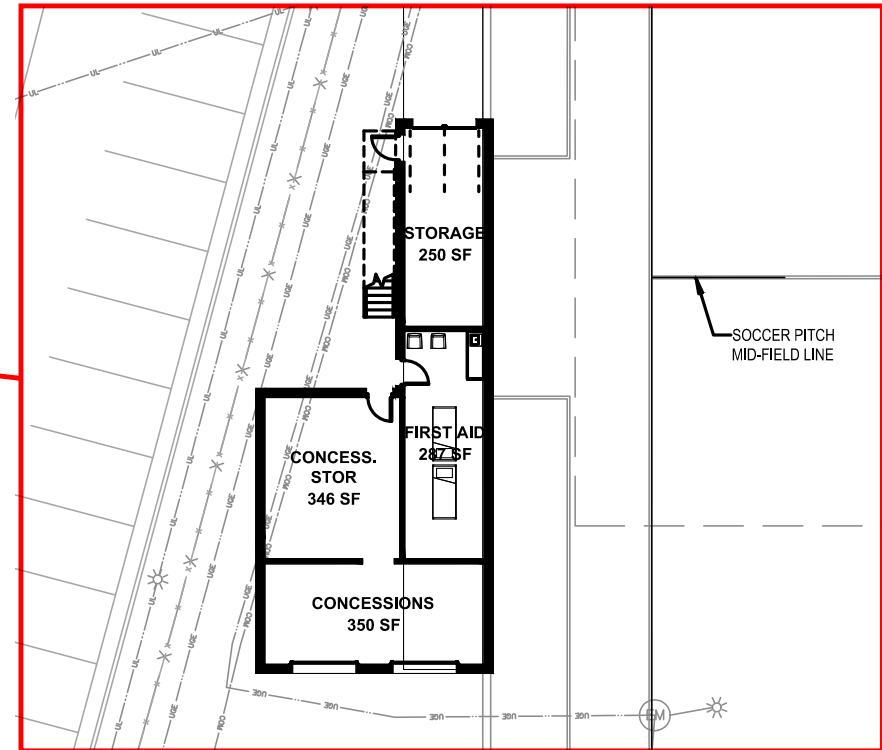
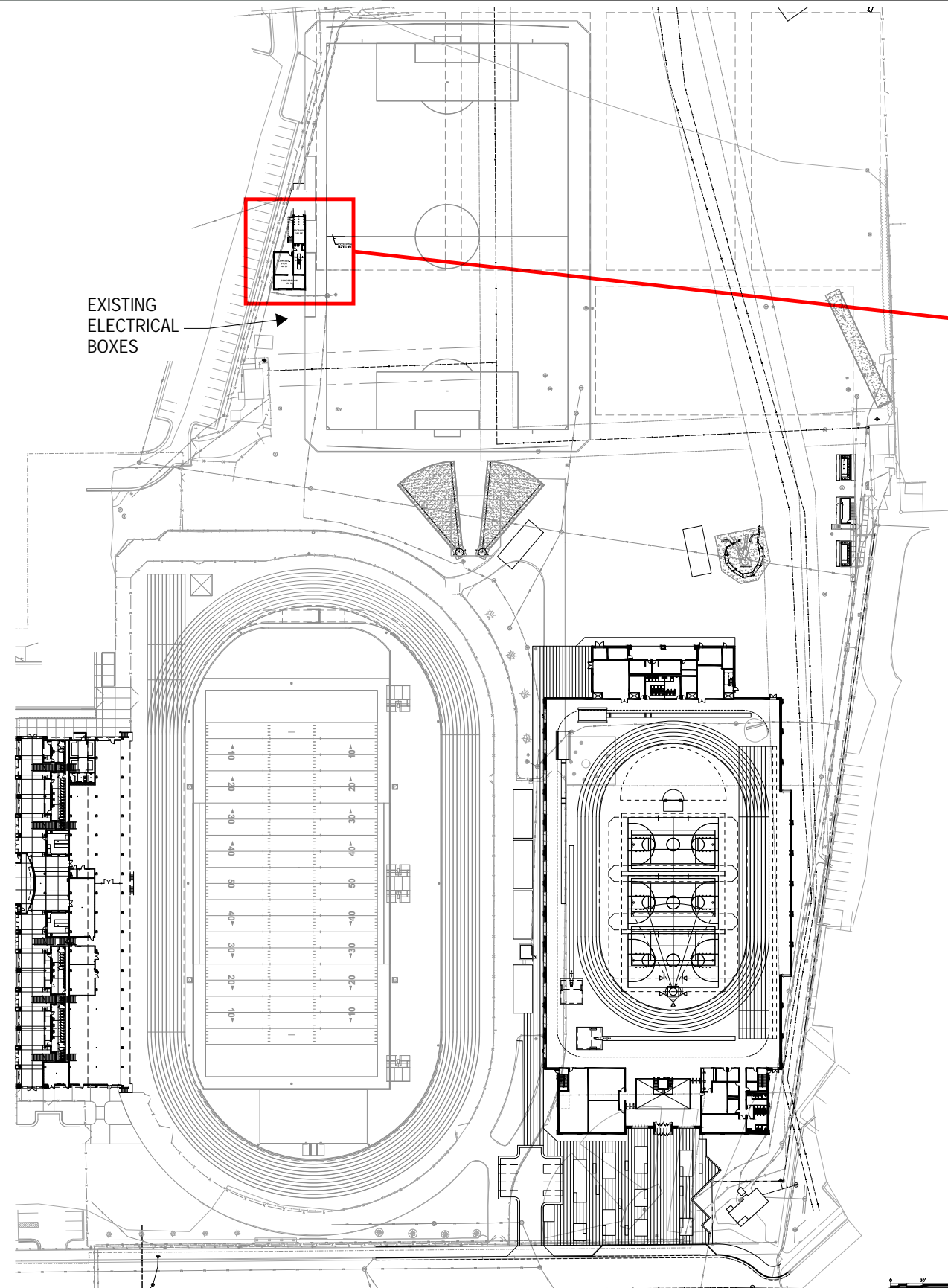


EAST ELEVATION



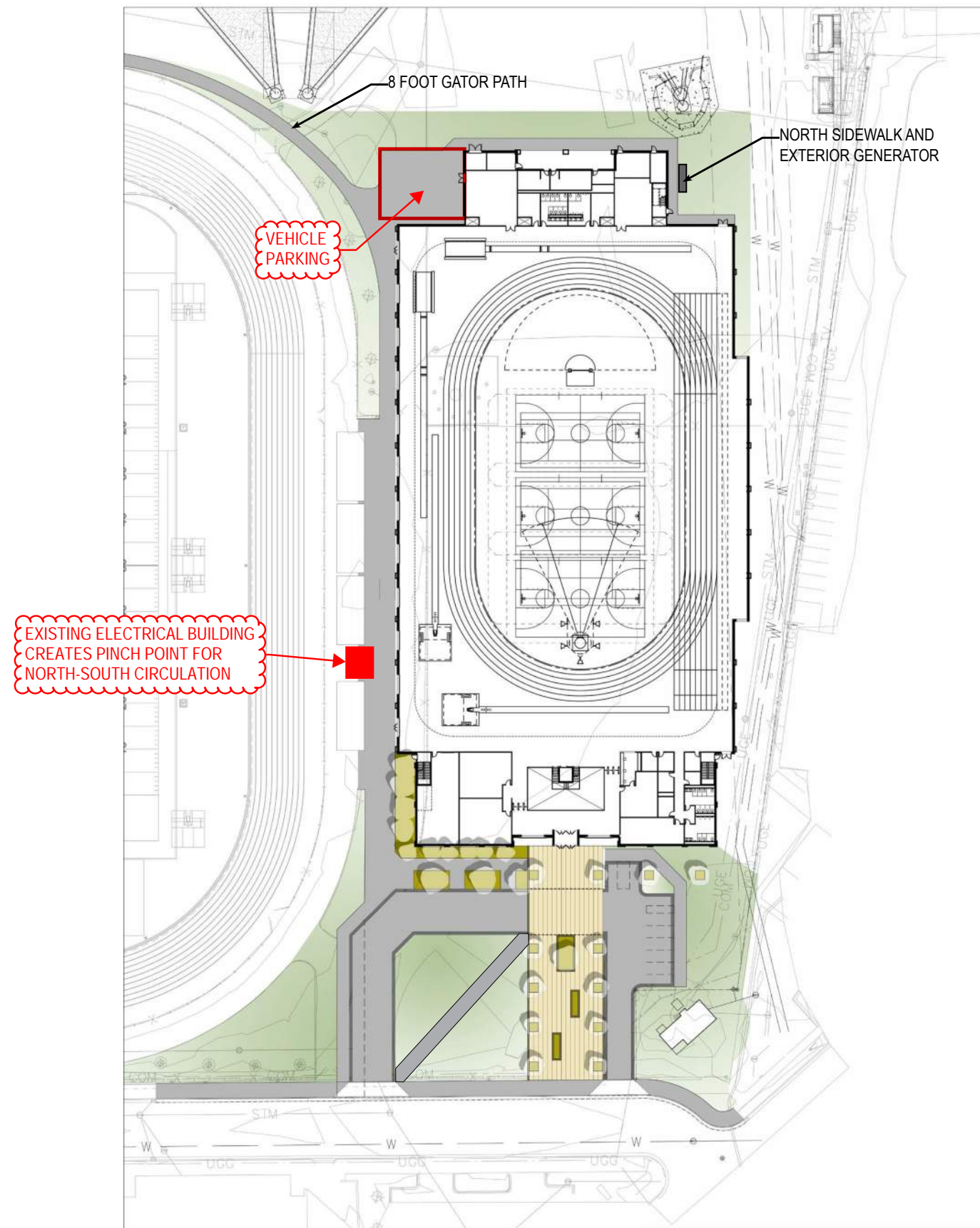
EXTERIOR PERSPECTIVE





OPTION B CONCEPT- SEE ARCHITECTURAL PLAN FOR CURRENT LAYOUT

HOLD ON DESIGN. UWL TO VERIFY PROGRAM AT SOCCER SUPPORT

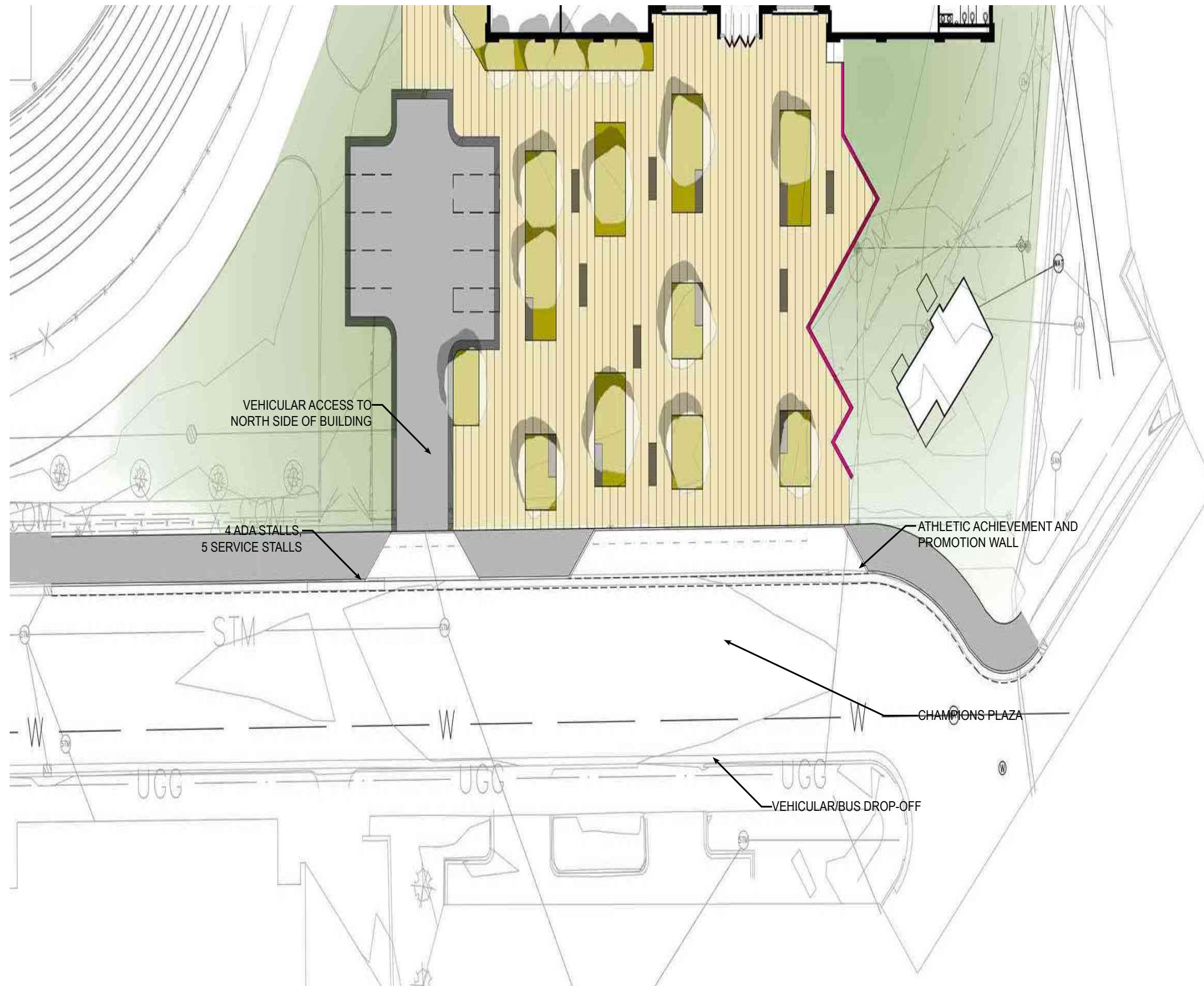


EXISTING ELECTRICAL BUILDING
CREATES PINCH POINT FOR
NORTH-SOUTH CIRCULATION

VEHICLE
PARKING

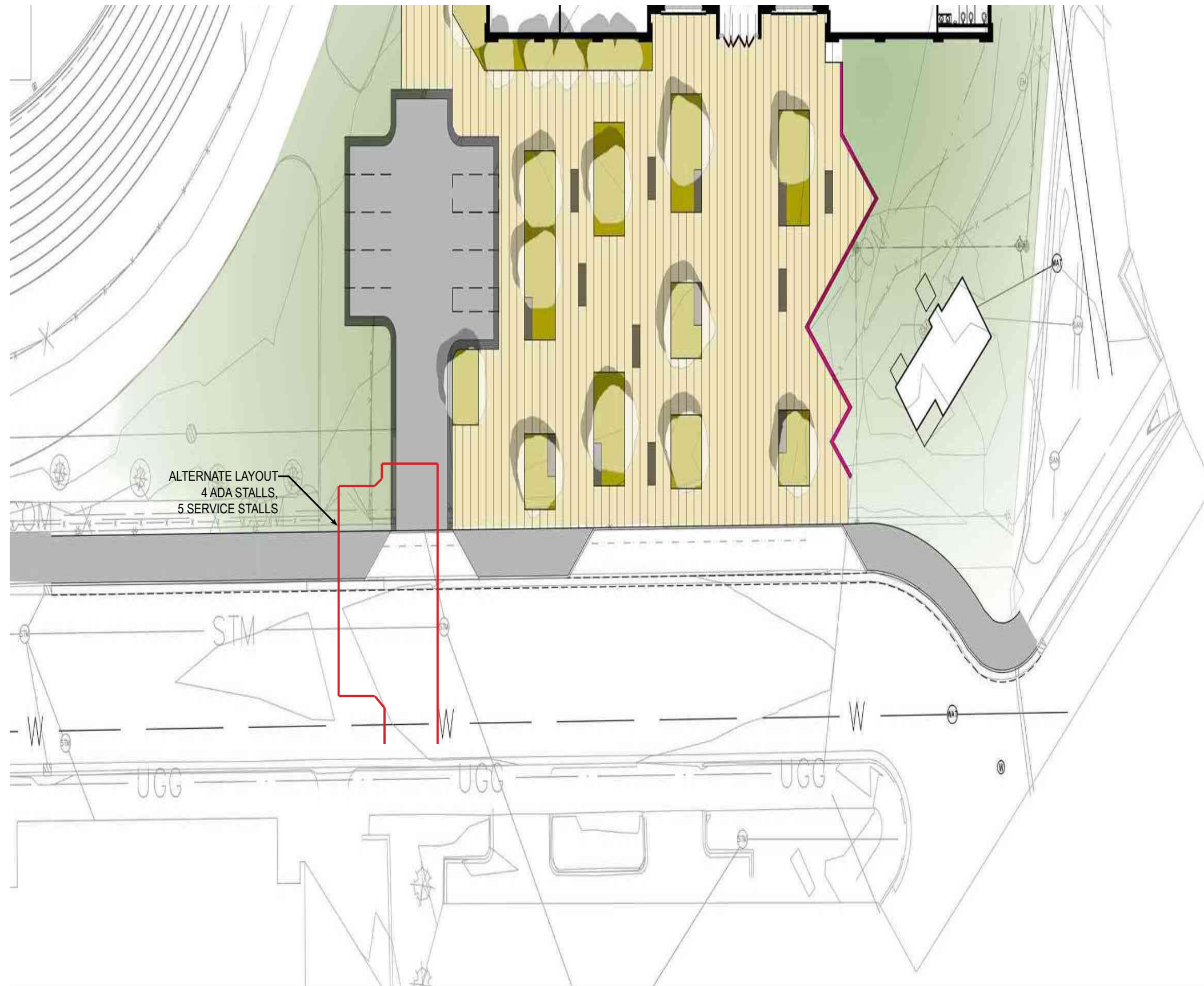
8 FOOT GATOR PATH

NORTH SIDEWALK AND
EXTERIOR GENERATOR



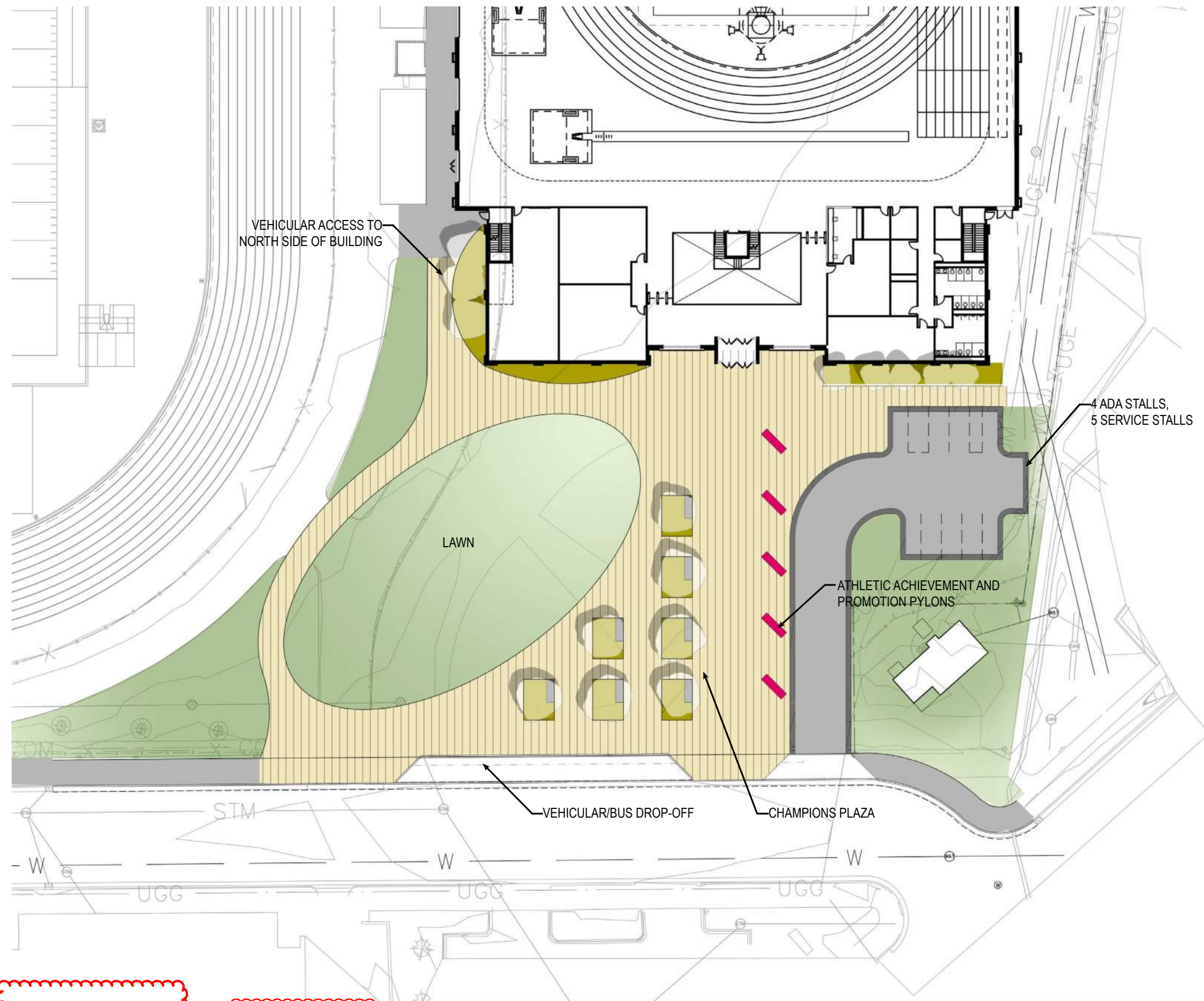
Entry Plaza Option 1





Entry Plaza Option 1



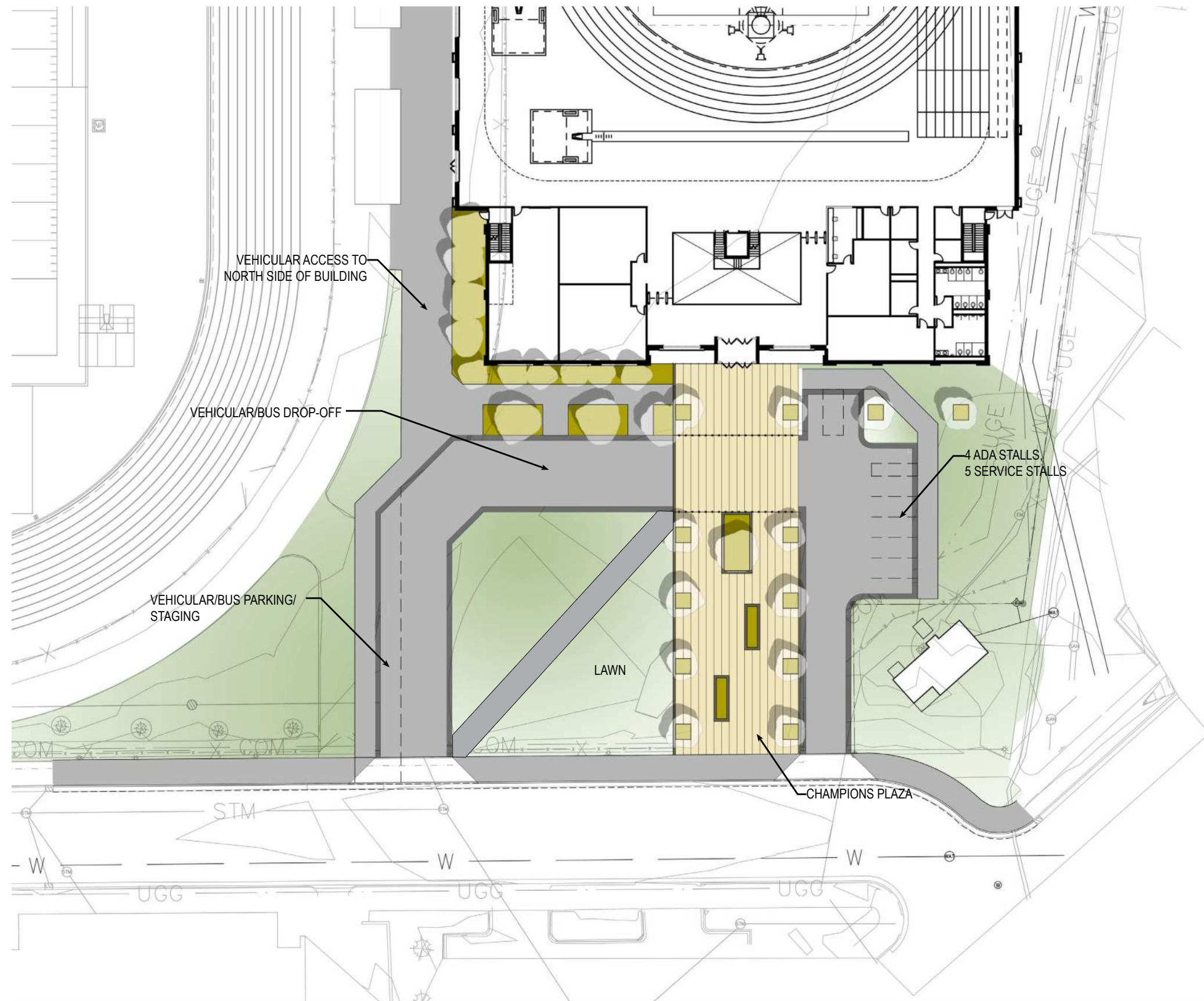


Entry Plaza Option 2

PREFERRED CONCEPT

12/12/2017





Entry Plaza Option 3

