

meeting minutes

Project No.: R3001.405.00 **File No.(s):** 0.10.0

Date Prepared: December 15, 2017

Meeting Date: December 12, 2017

Project Name: University of Wisconsin-La Crosse- New Student Fieldhouse & Soccer Support Facility (DFD 1512I)

Subject: Information Technology and Electrical Meeting

Meeting Attendees: See meeting attendance list attached

Comments, additions, or corrections to this memo should be communicated in writing to RDG Planning & Design within seven (7) days of receipt. If no comments are received within that period, this memo will be assumed accurate and filed as part of the permanent record for this project.

Discussion:

See attached exhibits discussed and marked up during the meeting for additional meeting documentation.

- 1) Overview of project including schedule, budget and floor plans by JP.
- 2) Site utilities and routing was reviewed by CU and EG.
- 3) Level 2 Multipurpose
 - a) Presentation and classroom activities. Also exercise activities.
 - b) Projectors recommended by UWL for rooms this size. Project onto the west wall.
 - c) Voice reinforcement recommended by UWL IT. Should accommodate meetings for individual rooms when room divider is closed and for combined rooms when divider is open.
- 4) Level 2 UWL Team room
 - a) Video wall an option, but has higher cost. Consider a grouping of 4-monitors on the north wall.
 - b) Audio system
 - c) Voice reinforcement recommended by UWL IT.
- 5) Level 0 Athletic Lockers
 - a) Will be 4 locker rooms per discussion this morning with the Executive Committee. Each will have social seating zones.
 - b) Video wall intended in each Lockers for instruction. Sound system also.
 - c) UWL IT recommends sound reinforcement.
- 6) Fieldhouse
 - a) Will Medium Voltage feed running N-S need access boxes in the floor? CU will do calculations for circuit length to determine if needed. Intent is for no floor boxes at the courts or track & field event areas.
 - b) Emergency Generator is gas powered, meter can be mounted on enclosure.
 - c) Sound amplification. Zoned for specific areas like jogging track.
 - d) Scoreboards



- e) Timing system for track events is required
 - f) Instructional walls on west and south of fieldhouse per 11/14 Workshop. No video capture would be built-in.
- 7) UWL IT: What are user needs and expectations for various spaces? This will affect IT infrastructure. Issues needing to be addressed to determine specific IT needs:
- a) What are timing and track meet requirements? Believe it will need hardwired connections at main and alternate finish lines. Cameras at finish line(s). Wireless will not work for this purpose. At existing facility, there are connection points at each T&F venue- this is expected for the new Fieldhouse.
 - b) Network access should be provided at places such as instructional walls. Includes fiber connections.
 - c) Locations with copper and fiber- need to be defined. Fiber can extend longer distances than copper (copper generally limited to 100 meters) so might be better suited in some locations.
 - d) Any place where data is collected for research (such as cardio equipment) needs network connection. Locations need to be defined.
- 8) South Fieldhouse wall: potential large video board location high in room (above Level 2). Idea to include a video band around the front face of the track. Not in current budget.
- 9) Conduit and mechanical pipes are anticipated under the jogging track. Ring & Du recommends keeping underside of the track accessible or exposed for maintenance.
- 10) UWL suggested it may be better to install related infrastructure now if known. This will add to first cost but expected to reduce ultimate cost. DP: No other events like concerts or graduation ceremonies with a stage are anticipated in the Fieldhouse.

END OF MEETING MINUTES



meeting attendance

Date: December 12, 2017 **Time:** 10:00a–11:30a **Subject:** Information Technology Meeting
Project: University of Wisconsin–La Crosse New Student Fieldhouse & Soccer Support Facility – DFD 15I2I
Project No.: 3001.405.00

✓	Name	Organization Department	Phone	E-mail
✓	Doug Pearson Executive Director	UW–La Crosse Planning & Construction	608.785.8019	dpearson@uwlax.edu
	Bob Hetzel Vice Chancellor	UW–La Crosse Administration & Finance	608.785.6491	bhetzel@uwlax.edu
	Beth Alderman Project Manager	Division of Facilities Development (DFD)	608.266.1796	beth.alderman@wisconsin.gov
	Cathy O'Hara Weiss Facility Architect + Planner	UW System Administration	608.263.4417	cweiss@uwsa.edu
	Kim Blum Director of Athletics	UW–La Crosse Athletics	608.785.8616	kblum@uwlax.edu
	Erin Thacker Deputy Director of Athletics	UW–La Crosse Athletics	608.785.5223	ethacker@uwlax.edu
	Sue White Director–Recreational Sports	UW–La Crosse Rec Sports	608.785.6529	swhite@uwlax.edu
	Mark Gibson ESS Department Chair	UW–La Crosse Exercise & Sport Science	608.785.8171	mkgibson@uwlax.edu
	Jason Murphy Women's Soccer HC, Fac. Dir.	UW–La Crosse Athletics	608.785.5175	jmurphy@uwlax.edu
	Josh Buchholtz Men's T&F HC, Asc. Fac. Dir.	UW–La Crosse Athletics	608.785.8622	jbuchholtz@uwlax.edu
	Nickolas Davis Women's Track & Field HC	UW–La Crosse Athletics	608.785.6531	ndavis@uwlax.edu
	Bill Hehli Women's & Men's Tennis HC	UW–La Crosse Athletics	608.785.8676	whehli@uwlax.edu
	Chris Schwarz Baseball HC	UW–La Crosse Athletics	608.785.6540	cschwarz@uwlax.edu
	Chris Helixon Softball HC	UW–La Crosse Athletics	608.785.6536	chelixon@uwlax.edu
	Mo McAlpine Assoc. Director, Rec Sports	UW–La Crosse Recreational Eagle Center	608.785.8698	mmcalpine@uwlax.edu
	Nathan Barnhart Asst. Director, Rec Sports	UW–La Crosse Recreational Eagle Center	608.785.6530	nbarnhart@uwlax.edu
✓	Milo Velimirovic Is Net Service Senior	UW–La Crosse Information Tech Svcs	608.785.6618	mvelimirovic@uwlax.edu
✓	Mark Valenti Asst. Dir. Academic Tech Svcs	UW–La Crosse Information Tech Svcs	608.785.5475	mvalenti@uwlax.edu
✓	Caleb Zick Network Specialist	UW–La Crosse Information Tech Svcs	608.785.8815	czick@uwlax.edu
	Dave Anderson Custodial Srv Pro Supervisor	UW–La Crosse Information Custodial Service	608.785.7593	danderson2@uwlax.edu



✓	Name	Organization Department	Phone	E-mail
	Scott Brown Building Maintenance Manager	UW-La Crosse Facilities Planning & Mgmt	608.785.8590	sbrown2@uwlax.edu
	Dennis Rodenberg Senior Facilities Engineer	UW-La Crosse Facilities Planning & Mgmt	608.785.8592	drozenberg@uwlax.edu
	Tim Merrell Power Plant Superintendent	UW-La Crosse Facilities Planning & Mgmt	608.785.8710	tmerrell@uwlax.edu
	Daniel Quam Business Manager	UW-La Crosse Facilities Planning & Mgmt	608.785.8642	dquam@uwlax.edu
	Tony Meidl Grounds Services Manager	UW-La Crosse Facilities Planning & Mgmt	608.785.8591	tameidl@uwlax.edu
	Kim Radtke Exec Dir, LEHP/Clinical EP	UW-La Crosse Facilities Exercise & Sport Sci	608.785.8188	kradtke@uwlax.edu
✓	Nathan Castillo	Pro Audio	414.476.1011	nathan@proaudiodesigns.com
	Nate Novak Project Manager – Civil/LA	Smith Group JJR	608.254.1177	Nate.novak@smithgroupjir.com
✓	Larry Palank Project Manager – Cost	Hunzinger Construction Company	262.780.9709	lpalank@hunzinger.com
✓	Josh Nickols Project Engineer – Utilities	Ring & DuChateau	414.778.1700	jnickols@ringdu.com
✓	Art Meredith Low Voltage Systems Design	Ring & DuChateau	414.778.1700	ameredith@ringdu.com
✓	Ed Gill Senior Project Manager	Ring & DuChateau	414.778.1700	egill@ringdu.com
✓	Chris Ulm Project Manager	Ring & DuChateau	414.778.1700	culm@ringdu.com
✓	Kyle Schauf Project Manager	HSR Associates	608.785.4725	kschauf@hsrassociates.com
✓	Doug Ramsey Principal-in-Charge	HSR Associates	608.785.4710	dramsey@hsrassociates.com
✓	Hoang Tran Project Architect	RDG Planning & Design	515.309.3263	htran@rdgusa.com
✓	Nathan Harris Project Architect	RDG Planning & Design	515.309.3244	nharris@rdgusa.com
✓	Marty Miller Project Manager	RDG Planning & Design	515.309.3218	mmiller@rdgusa.com
✓	Jack Patton Principal	RDG Planning & Design	515.309.3207	jpatton@rdgusa.com



Workshop Objectives

Gather final design comments prior to DFD 10% Peer Review

- Floor plans
- Exterior image
- Site Plan

Confirm Budget and Program

\$40 m. TPC

Confirm Schedule

Agenda (120 Minutes max)

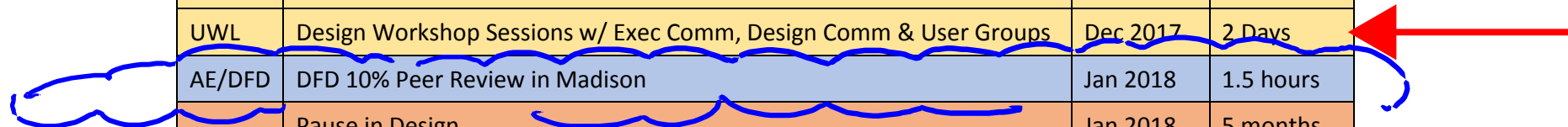
Review the Design

Seeking Committee Critique and Input



Preliminary Project Schedule

LOCATION	TASK	DATE	DURATION
UWL	Kick-off Meeting w/ Exec Comm	8.24.17	1.5 hours
AE	DFD 10% Document Preparation	Sept 2018	4 months
UWL	Design Meetings w/ Executive Comm & Design Comm	9.20.17	1 Day
UWL	Design Workshop Sessions w/ Exec Comm, Design Comm & User Groups	10.17.17	2 Days
UWL	Design Workshop Sessions w/ Exec Comm, Design Comm & User Groups	11.14.17	2 Days
UWL	Design Workshop Sessions w/ Exec Comm, Design Comm & User Groups	Dec 2017	2 Days
AE/DFD	DFD 10% Peer Review in Madison	Jan 2018	1.5 hours
	Pause in Design	Jan 2018	5 months
AE	DFD 35% Document Preparation	June 2018	4 months
UWL	Design Meetings w/ Executive Comm & Design Comm	July 2018	1 Day
UWL	Design Meetings w/ Executive Comm & Design Comm	Aug 2018	1 Day
UWL	Design Meetings w/ Executive Comm & Design Comm	Sept 2018	1 Day
AE/DFD	DFD 35% Preliminary Design Submittal & Review of Documents	Oct 2018	2 Months
UWL	Design Meetings w/ Executive Comm & Design Comm	Nov 2018	1 Day
AE	DFD 100% Document Preparation	Dec 2018	6 months
UWL	Design Meetings w/ Executive Comm & Design Comm	Jan 2019	1 Day
UWL	Design Workshop Sessions w/ Exec Comm, Design Comm & User Groups	Feb 2019	1 Day
UWL	Design Meetings w/ Executive Comm & Design Comm	Mar 2019	1 Day
UWL	Design Meetings w/ Executive Comm & Design Comm	April 2019	1 Day
AE/DFD	DFD 100% Final Design Submittal & Review of Documents	June 2019	2 Months
MAD	BOR/SBC Authority to Construct	Aug 2019	3 Months
DFD	Release of Bidding Documents	Nov 2019	3 Months
DFD	Receipt of Bids & Release of Construction Contracts	Feb 2020	3 Months
UWL	Construction of New Facility	May 2020	22 Months
UWL	Substantial Completion	Mar 2022	1 Month
UWL	Occupancy	April 2022	3 Months
UWL	Final Completion	July 2022	4 Months





SOUTH ELEVATION

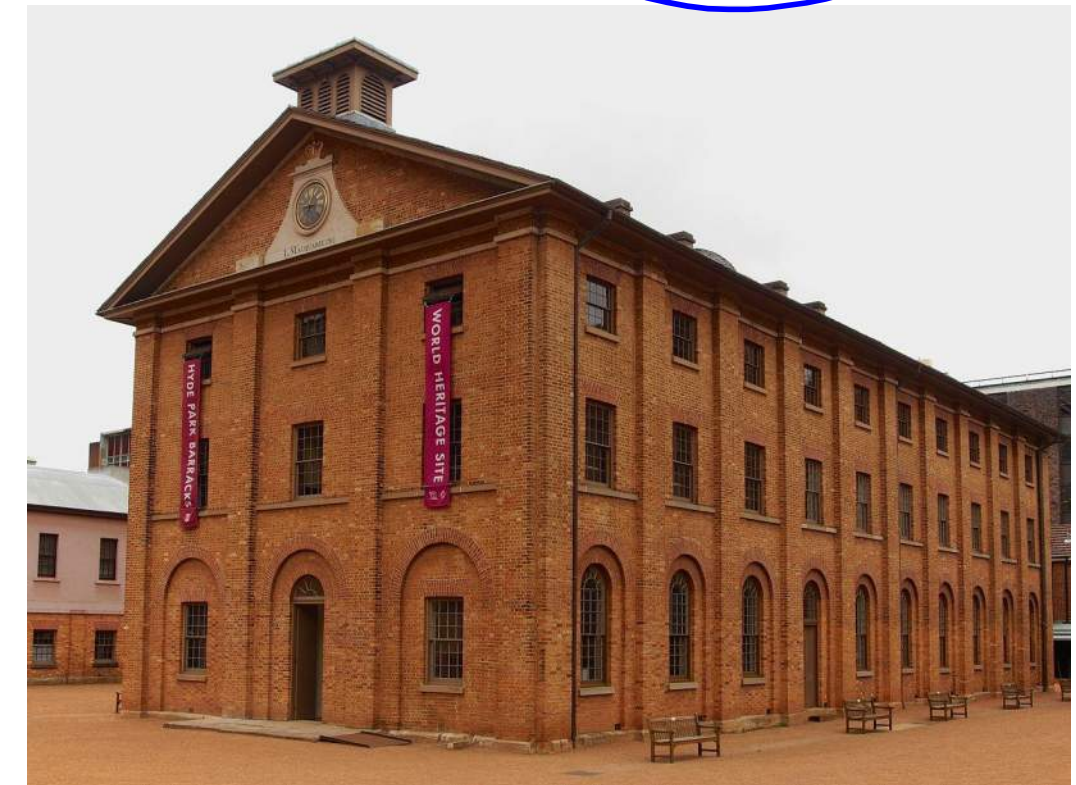
NORTH ELEVATION



WEST ELEVATION

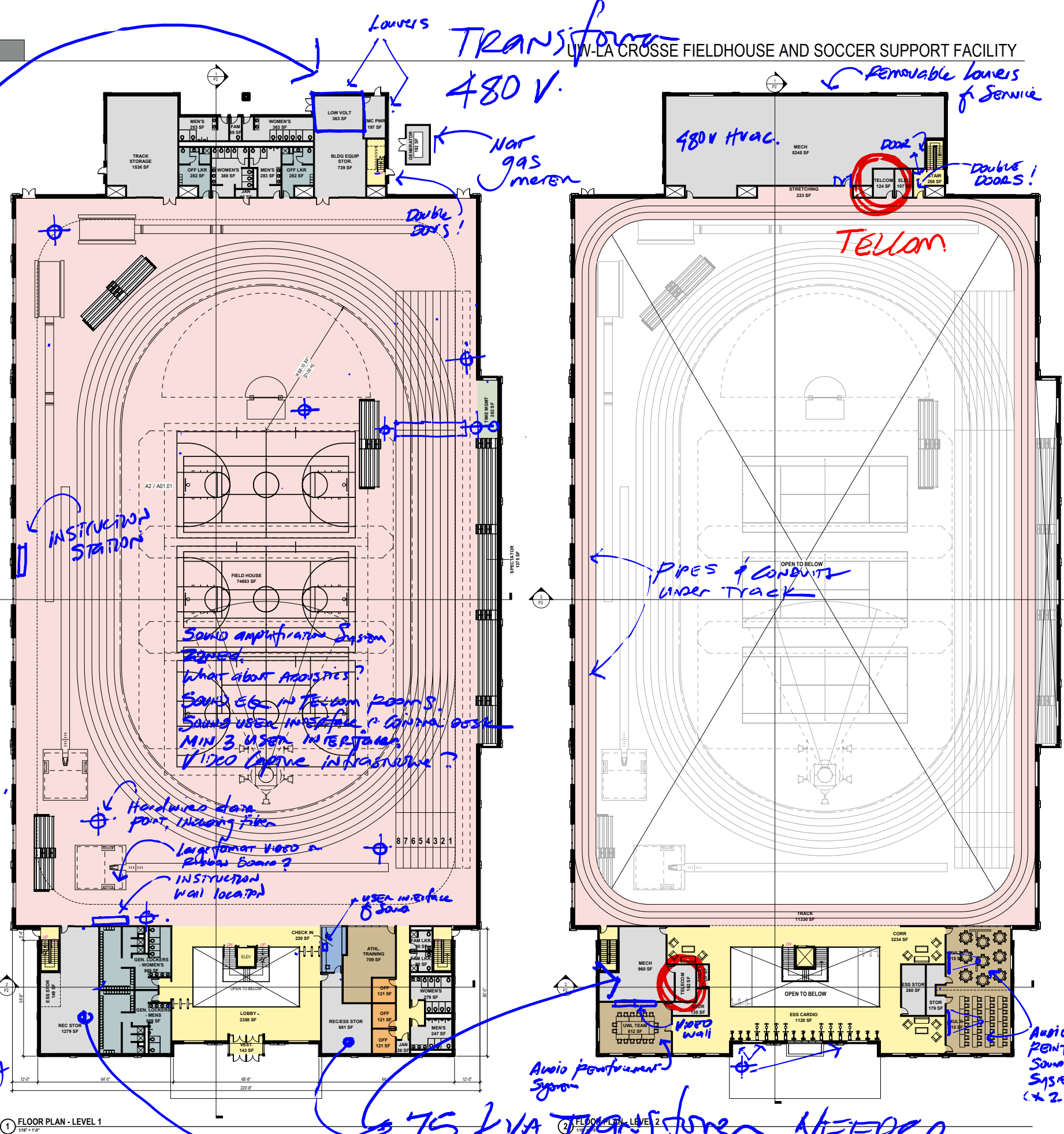
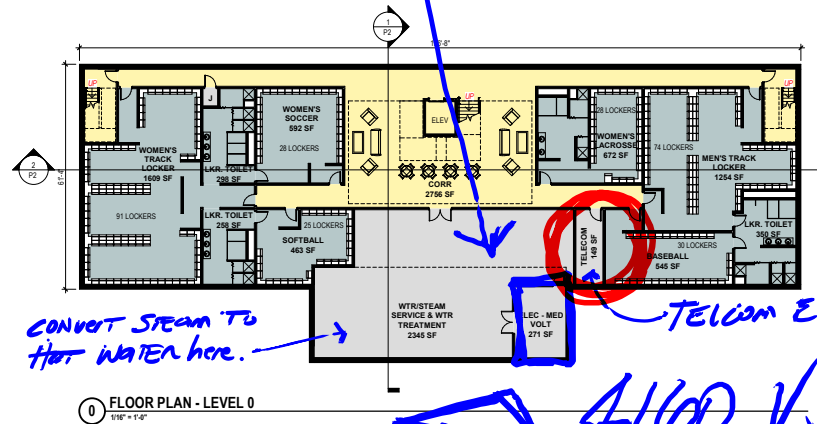
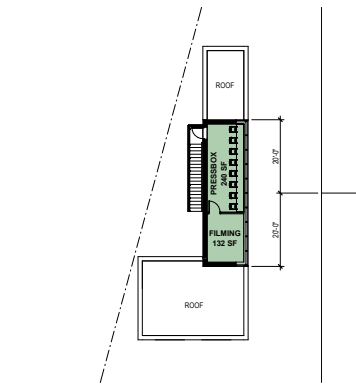
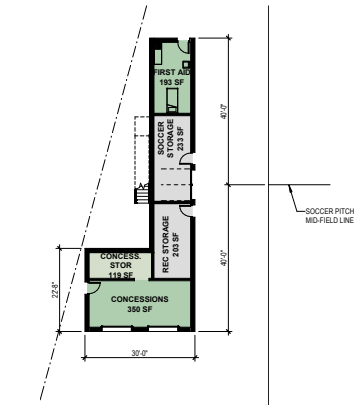


EAST ELEVATION





EXTERIOR PERSPECTIVE



Med Voltage Feeder

Transformers 480 V.

Removable louvers for service

Hot gas mason

480V hvac.

TELLON!

Double doors!

INSTRUCTION STATIONS

*Sound amplification system
needed.
What about acoustics?
Sound eq in TELLON rooms.
Sound used in restrooms & control booth.
MIN 3 users in restrooms.
Video capture infrastructure?*

Hardware data point, including fiber

Large format video on ribbon board?

INSTRUCTION wall location

USER interface of data

PIPES & CONDUITS UNDER TRACK

CONVERT STEAM TO HOT WATER here.

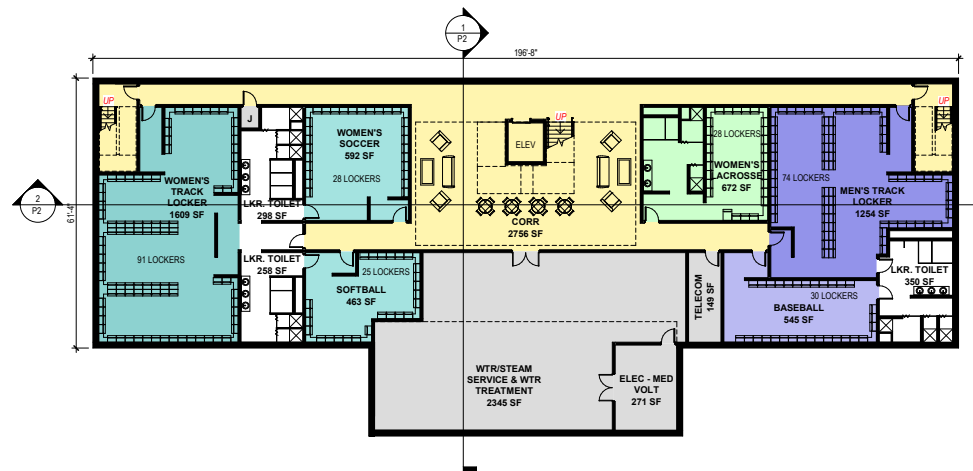
TELLON ENTRY

Audio performance system

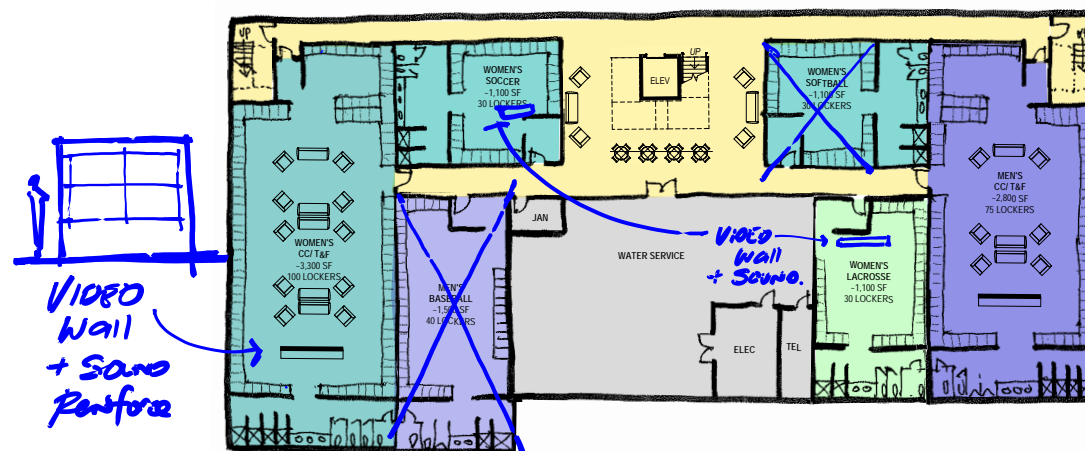
Audio performance Sound System (x2)

4100 V. ENTRANCES

75 kVA TRANSFORMER NEEDED.



0 FLOOR PLAN - LEVEL 0
 3/16" = 1'-0"

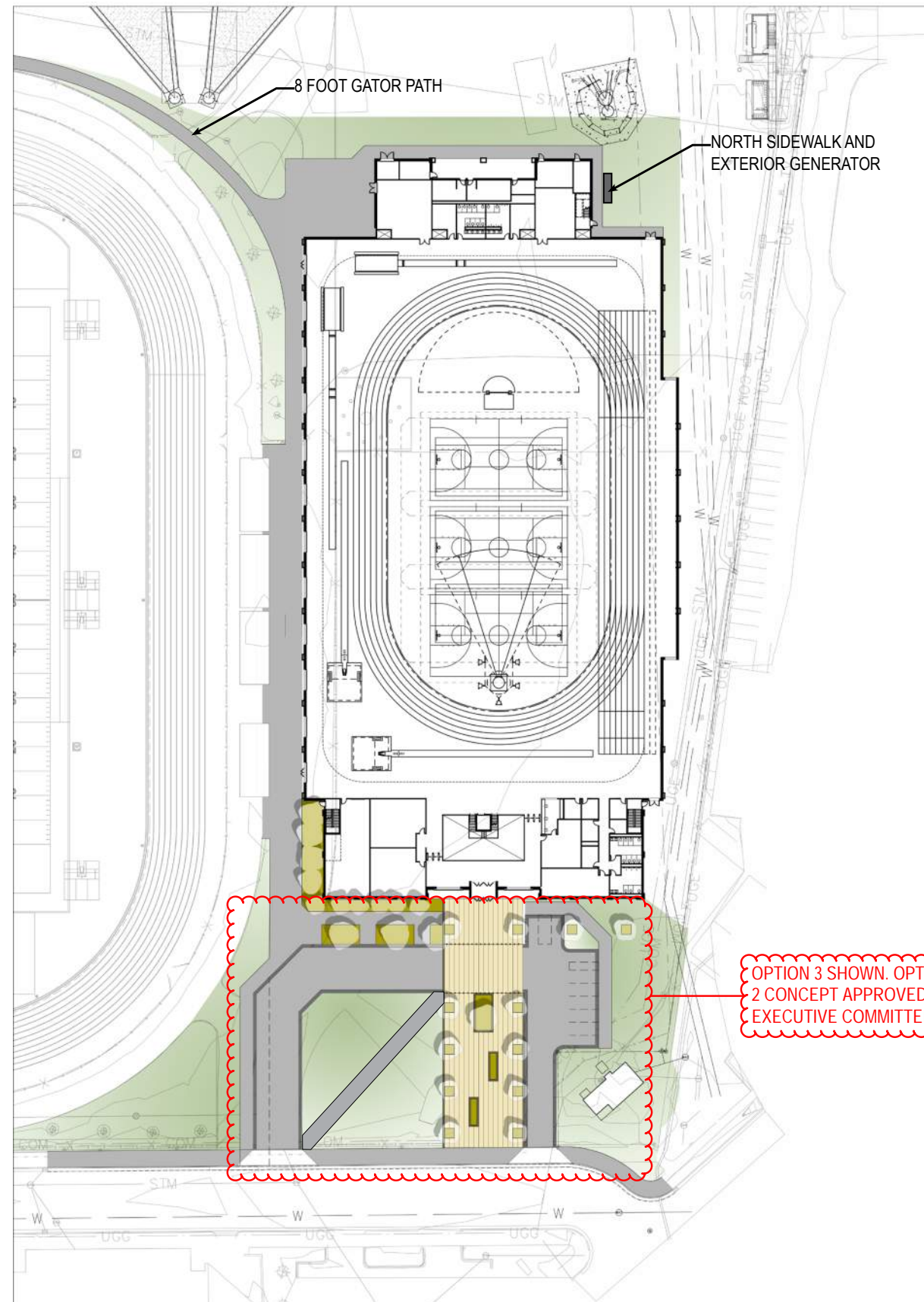


0' FLOOR PLAN - LEVEL 0 - ENLARGED LOCKER OPTION
 3/16" = 1'-0"

Atheltic Locker Counts

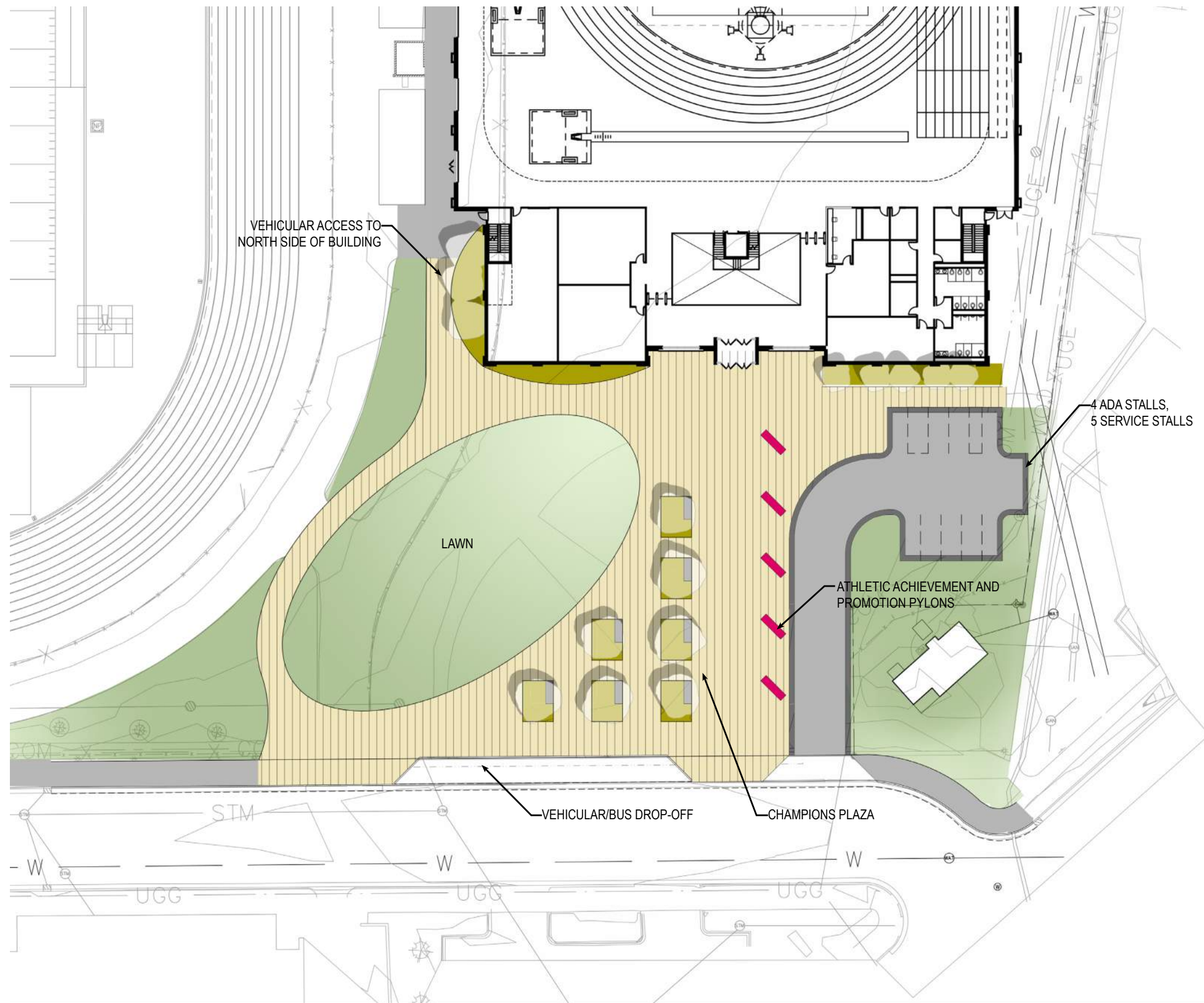
December 12, 2017

Team	Target	Current	Resolved
W Track	90	100	
W Soccer	25	30	
W Softball	25	30	
W Lacrosse	25	30	
M Track	75	75	
M Baseball	30	40	



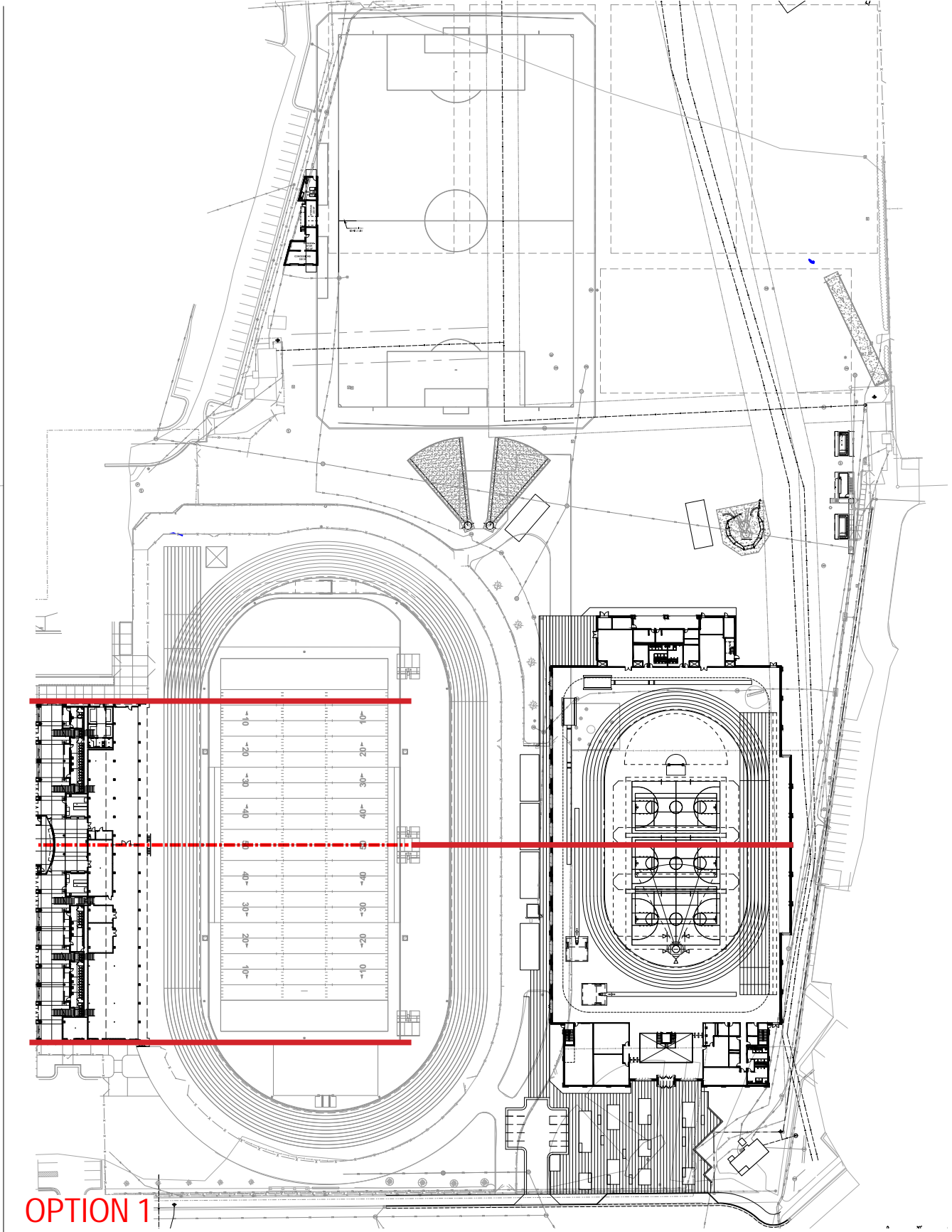
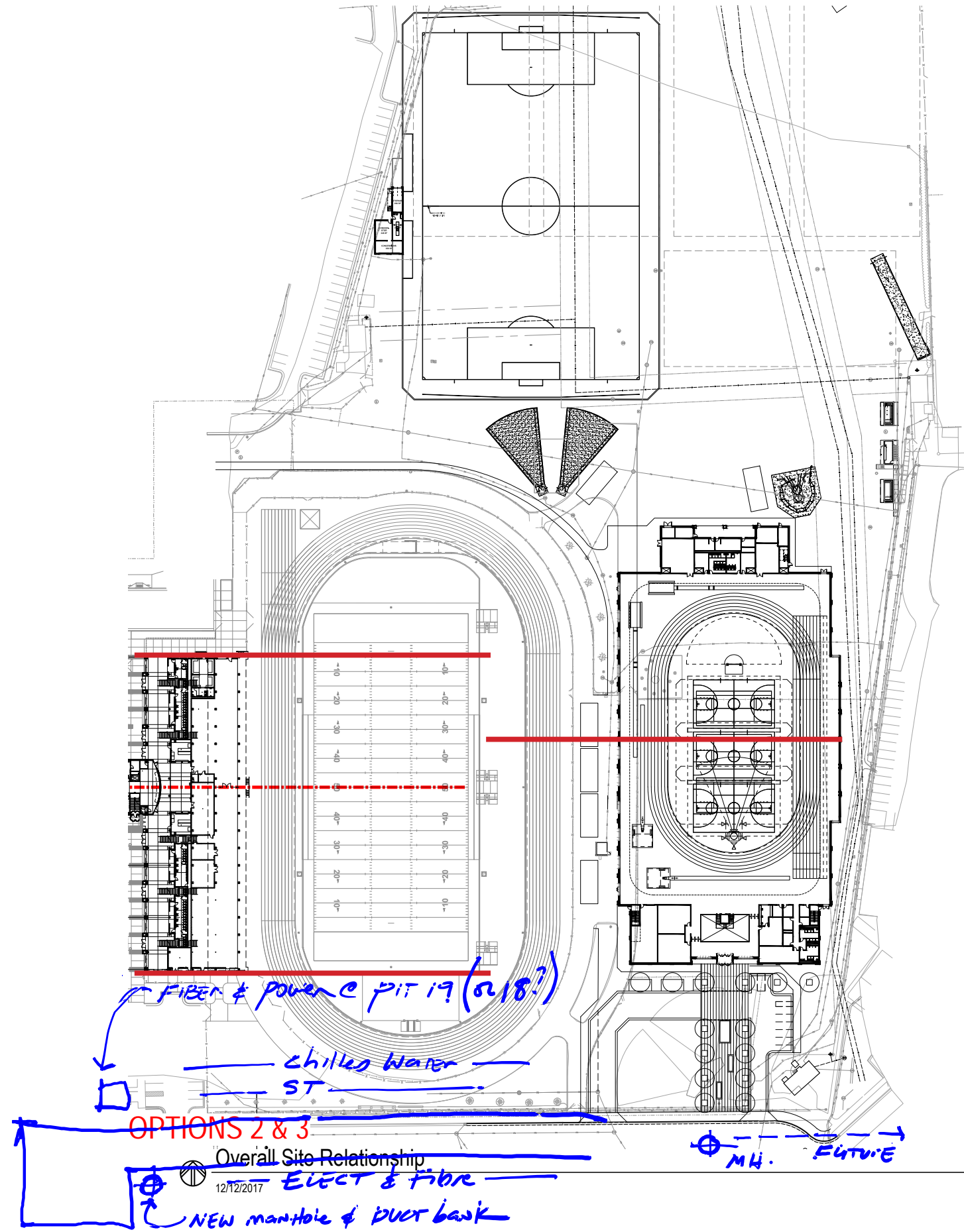
Full Site Plan



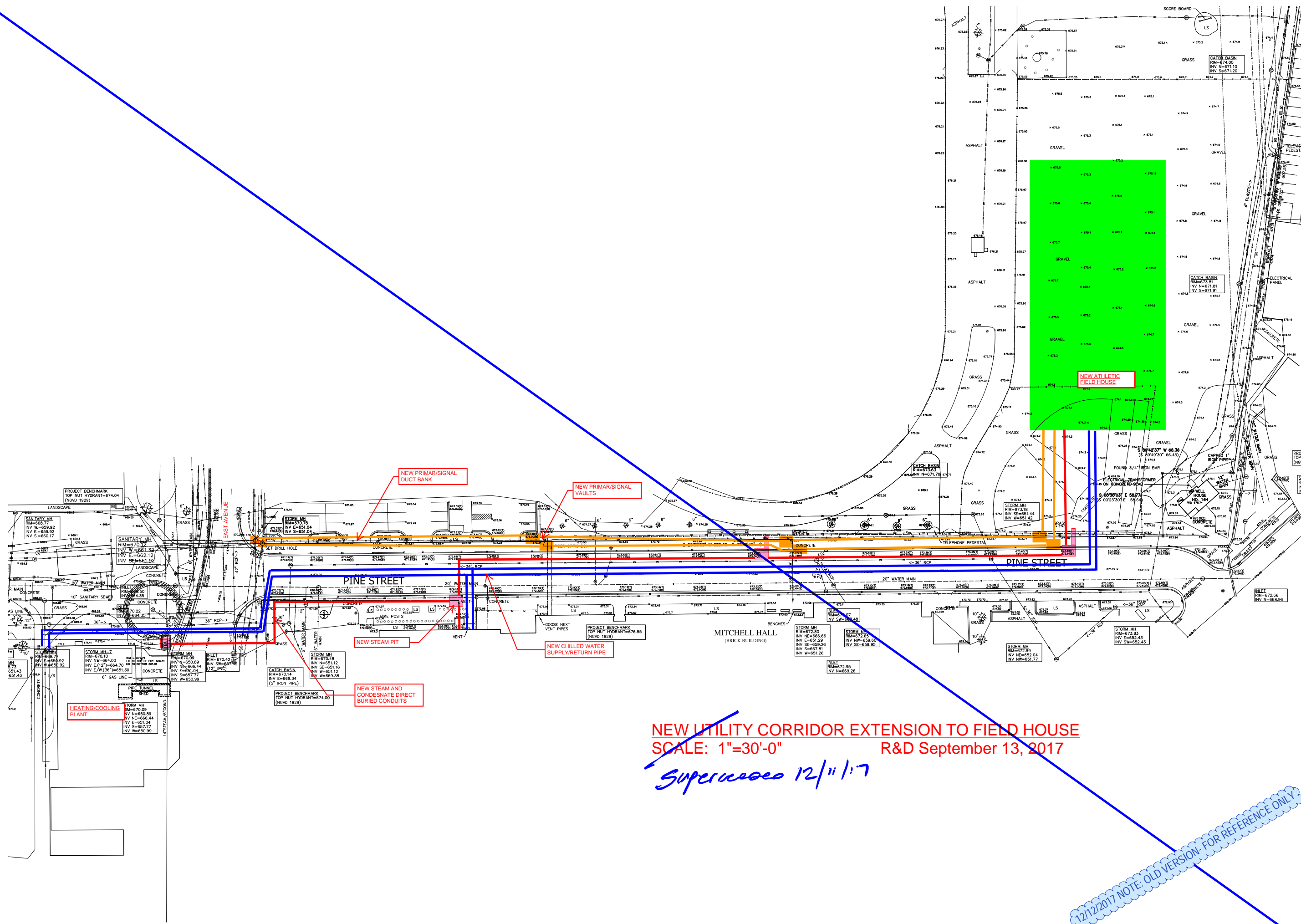


Entry Plaza Option 2





OPTION 1



HEATING/COOLING PLANT

NEW STEAM PIT

NEW STEAM AND CONDENSATE DIRECT BURIED CONDUITS

NEW PRIMAR/SIGNAL DUCT BANK

NEW PRIMAR/SIGNAL VAULTS

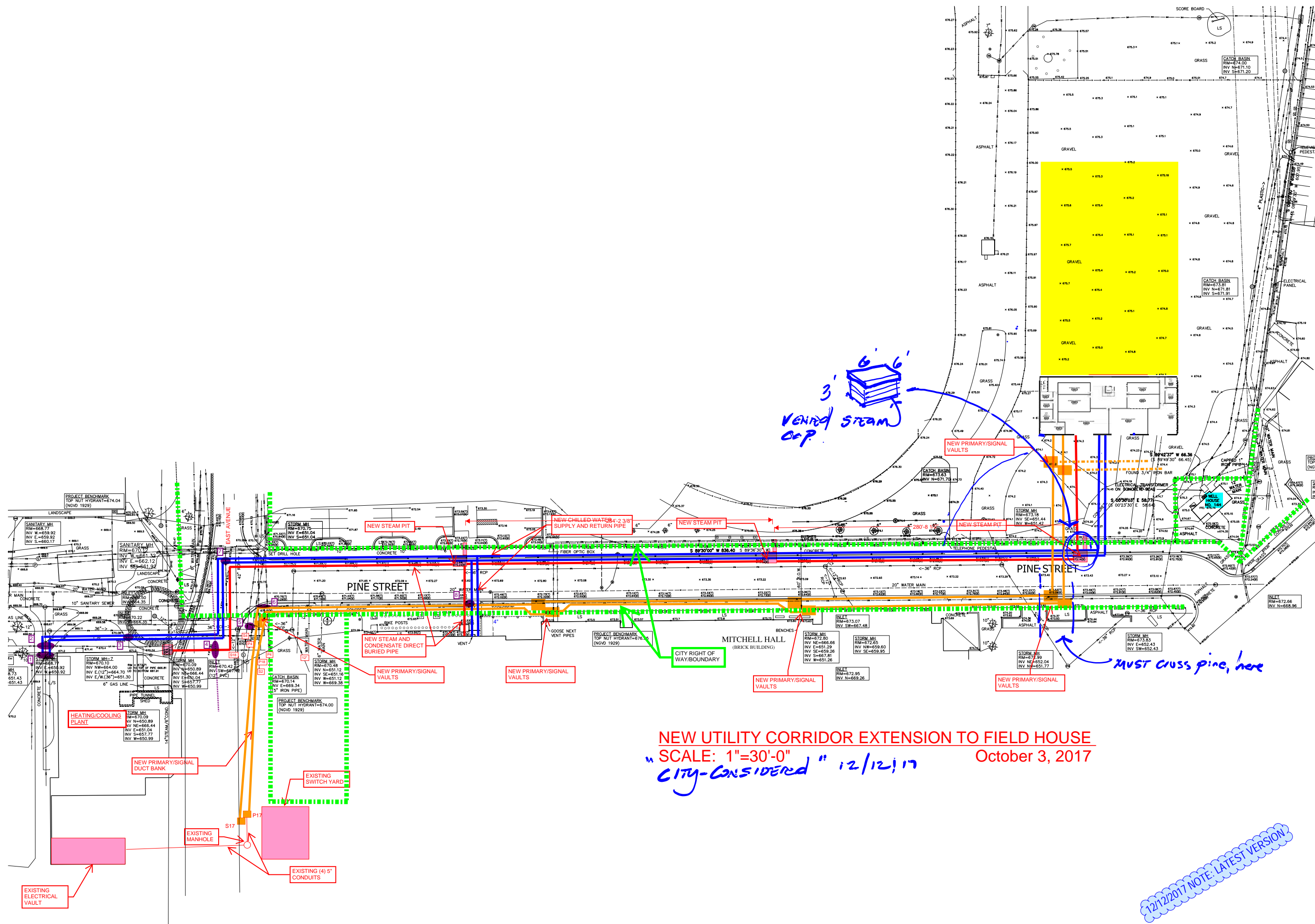
NEW CHILLED WATER SUPPLY/RETURN PIPE

NEW ATHLETIC FIELD HOUSE

NEW UTILITY CORRIDOR EXTENSION TO FIELD HOUSE
 SCALE: 1"=30'-0"
 R&D September 13, 2017

Superceded 12/11/17

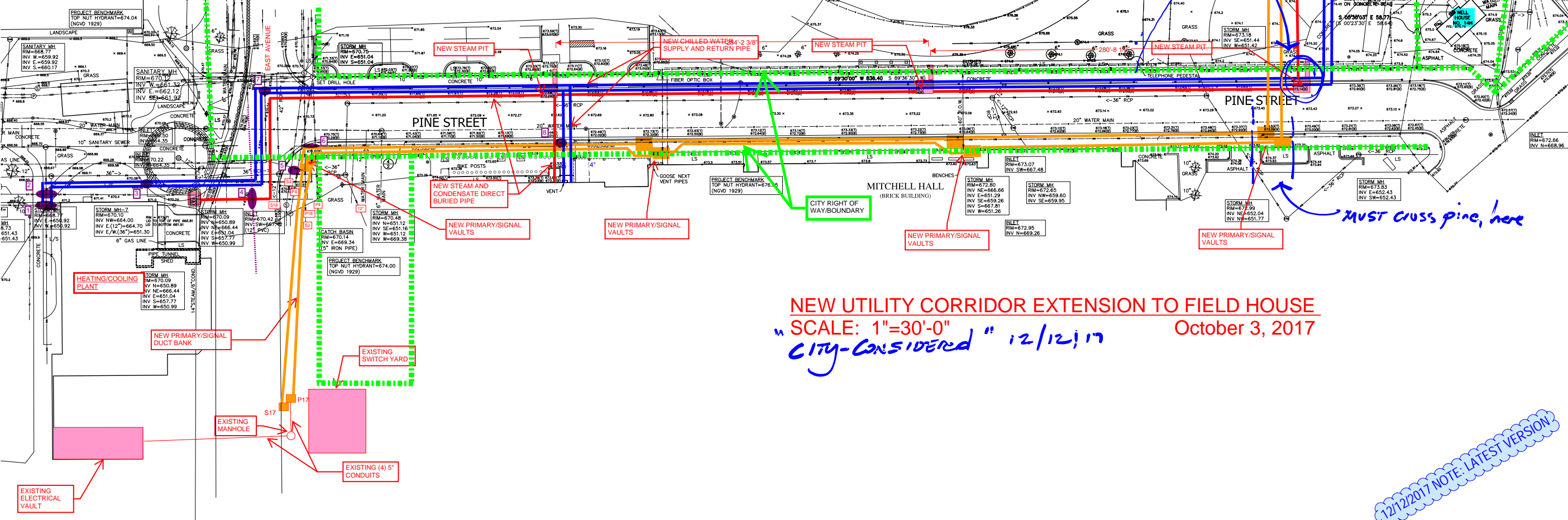
12/12/2017 NOTE: OLD VERSION FOR REFERENCE ONLY



3' 6' 6'
 VENTED STEAM
 COP

NEW UTILITY CORRIDOR EXTENSION TO FIELD HOUSE
 SCALE: 1"=30'-0"
 CITY-CONSIDERED 12/12/17
 October 3, 2017

12/12/2017 NOTE: LATEST VERSION



MUST CROSS PINE, here