

meeting minutes

Project No.: R3001.405.00 **File No.(s):** 0.10.0

Date Prepared: December 15, 2017

Meeting Date: December 12, 2017

Project Name: University of Wisconsin-La Crosse- New Student Fieldhouse & Soccer Support Facility (DFD 1512I)

Subject: Maintenance and Custodial Meeting

Meeting Attendees: See meeting attendance list attached

Comments, additions, or corrections to this memo should be communicated in writing to RDG Planning & Design within seven (7) days of receipt. If no comments are received within that period, this memo will be assumed accurate and filed as part of the permanent record for this project.

Discussion:

See attached exhibits discussed and marked up during the meeting for additional meeting documentation.

- 1) Mechanical representatives are present as part of the Maintenance staff
- 2) JP reviewed the agenda and the current design for general orientation.
- 3) Site Plan review. CU reviewed electrical work along Pine Street. JN reviewed the steam line and related utilities. Site utility work affects Mitchell also.
- 4) CU reviewed Electrical rooms on the building floor plan. Current scheme is efficient from a cost of electrical circuit materials standpoint.
- 5) EG: Fire pump is not required. Fully air-conditioned building. Need areaways for ventilation and equipment access to the basement equipment. Need to think about how equipment is removed/ replaced from the basement. Terminal with HW reheat coils. Radiant heating at exterior glass believed to be most efficient. One air handler for the south wing. North air handler will serve the north and Fieldhouse.
- 6) DP asked about redundancy in the HVAC fans. EG says this can be done.
- 7) DP asked about sharing the north interior and exterior toilets. Current plan does not share toilets due to security concerns raised by Users at Workshop 2. Current plan is the simplest and most effective (without special monitoring) for security.
- 8) Humidification is not required by UWL.
- 9) Three air handling systems for the building.
- 10) Chilled water pump is not needed in the building.
- 11) The Fieldhouse has low returns and high supply to minimize stratification, so large ceiling fans will not be utilized.
- 12) Show sand pit storage in the floor of the Fieldhouse near the jump pits.
- 13) Space needed for dry janitor storage closets separate from the wet janitor closets.
- 14) North Toilets need heat in winter. Water will not be shut off in winter, but north Toilets will not be used in winter.
- 15) Level 2 Mechanical rooms could have a janitor's mop sink (separate room not required).
- 16) Place for riding scrubber on Level 1 and Level 2 is needed.
 - a) The type of scrubber will need to be verified since some resilient athletic flooring manufacturers recommend dry cleaning methods. This will be reviewed and verified as materials are reviewed in the later stages of the design.
- 17) Size of elevator cab needs to be large enough for gurney and for mechanical/ electrical equipment. Specific size to be determined.
- 18) Turnstile operation was discussed. Specific functions to be determined based on the Three Roommates.



- 19) Divider curtain concepts discussed.
- 20) EG: demand ventilation (CO2 sensors) could be used at the fieldhouse, but doesn't work well. Set up the same as existing fieldhouse preferred by UWL.
- 21) What are design temperatures for mechanical system? Question to be determined in cooperation with UWL. This could make a significant difference in the cost of mechanical systems. DP: DIII Indoor National Track Meet is the highest occupancy anticipated. 1500 spectators plus 300 participants, so 1,800 is the maximum.

END OF MEETING MINUTES



meeting attendance

Date: December 12, 2017 **Time:** 1:00p–3:00p **Subject:** Maintenance & Custodial Meeting
Project: University of Wisconsin–La Crosse New Student Fieldhouse & Soccer Support Facility – DFD 15I2I
Project No.: 3001.405.00

✓	Name	Organization Department	Phone	E-mail
✓	Doug Pearson Executive Director	UW–La Crosse Planning & Construction	608.785.8019	dpearson@uwlax.edu
	Bob Hetzel Vice Chancellor	UW–La Crosse Administration & Finance	608.785.6491	bhetzel@uwlax.edu
	Beth Alderman Project Manager	Division of Facilities Development (DFD)	608.266.1796	beth.alderman@wisconsin.gov
	Cathy O'Hara Weiss Facility Architect + Planner	UW System Administration	608.263.4417	cweiss@uwsa.edu
	Kim Blum Director of Athletics	UW–La Crosse Athletics	608.785.8616	kblum@uwlax.edu
	Erin Thacker Deputy Director of Athletics	UW–La Crosse Athletics	608.785.5223	ethacker@uwlax.edu
	Sue White Director–Recreational Sports	UW–La Crosse Rec Sports	608.785.6529	swhite@uwlax.edu
	Mark Gibson ESS Department Chair	UW–La Crosse Exercise & Sport Science	608.785.8171	mkgibson@uwlax.edu
	Jason Murphy Women's Soccer HC, Fac. Dir.	UW–La Crosse Athletics	608.785.5175	jmurphy@uwlax.edu
	Josh Buchholtz Men's T&F HC, Asc. Fac. Dir.	UW–La Crosse Athletics	608.785.8622	jbuchholtz@uwlax.edu
	Nickolas Davis Women's Track & Field HC	UW–La Crosse Athletics	608.785.6531	ndavis@uwlax.edu
	Bill Hehli Women's & Men's Tennis HC	UW–La Crosse Athletics	608.785.8676	whehli@uwlax.edu
	Chris Schwarz Baseball HC	UW–La Crosse Athletics	608.785.6540	cschwarz@uwlax.edu
	Chris Helixon Softball HC	UW–La Crosse Athletics	608.785.6536	chelixon@uwlax.edu
	Mo McAlpine Assoc. Director, Rec Sports	UW–La Crosse Recreational Eagle Center	608.785.8698	mmcalpine@uwlax.edu
	Nathan Barnhart Asst. Director, Rec Sports	UW–La Crosse Recreational Eagle Center	608.785.6530	nbarnhart@uwlax.edu
	Milo Velimirovic Is Net Service Senior	UW–La Crosse Information Tech Svcs	608.785.6618	mvelimirovic@uwlax.edu
	Mark Valenti Asst. Dir. Academic Tech Svcs	UW–La Crosse Information Tech Svcs	608.785.5475	mvalenti@uwlax.edu
	Caleb Zick Network Specialist	UW–La Crosse Information Tech Svcs	608.785.8815	czick@uwlax.edu
✓	Dave Anderson Custodial Srv Pro Supervisor	UW–La Crosse Information Custodial Service	608.785.7593	danderson2@uwlax.edu



✓	Name	Organization Department	Phone	E-mail
✓	Scott Brown Building Maintenance Manager	UW-La Crosse Facilities Planning & Mgmt	608.785.8590	sbrown2@uwlax.edu
✓	Dennis Rodenberg Senior Facilities Engineer	UW-La Crosse Facilities Planning & Mgmt	608.785.8592	drozenberg@uwlax.edu
✓	Tim Merrell Power Plant Superintendent	UW-La Crosse Facilities Planning & Mgmt	608.785.8710	tmerrell@uwlax.edu
✓	Daniel Quam Business Manager	UW-La Crosse Facilities Planning & Mgmt	608.785.8642	dquam@uwlax.edu
✓	Tony Meidl Grounds Services Manager	UW-La Crosse Facilities Planning & Mgmt	608.785.8591	tameidl@uwlax.edu
	Kim Radtke Exec Dir, LEHP/Clinical EP	UW-La Crosse Facilities Exercise & Sport Sci	608.785.8188	kradtke@uwlax.edu
	Nathan Castillo	Pro Audio	414.476.1011	nathan@proaudiodesigns.com
	Nate Novak Project Manager – Civil/LA	Smith Group JJR	608.254.1177	Nate.novak@smithgroupjjr.com
✓	Larry Palank Project Manager – Cost	Hunzinger Construction Company	262.780.9709	lpalank@hunzinger.com
✓	Josh Nickols Project Engineer – Utilities	Ring & DuChateau	414.778.1700	jnickols@ringdu.com
	Art Meredith Low Voltage Systems Design	Ring & DuChateau	414.778.1700	ameredith@ringdu.com
✓	Ed Gill Senior Project Manager	Ring & DuChateau	414.778.1700	egill@ringdu.com
✓	Chris Ulm Project Manager	Ring & DuChateau	414.778.1700	culm@ringdu.com
✓	Kyle Schauf Project Manager	HSR Associates	608.785.4725	kschauf@hsrassociates.com
✓	Doug Ramsey Principal-in-Charge	HSR Associates	608.785.4710	dramsey@hsrassociates.com
✓	Hoang Tran Project Architect	RDG Planning & Design	515.309.3263	htran@rdgusa.com
✓	Nathan Harris Project Architect	RDG Planning & Design	515.309.3244	nharris@rdgusa.com
✓	Marty Miller Project Manager	RDG Planning & Design	515.309.3218	mmiller@rdgusa.com
✓	Jack Patton Principal	RDG Planning & Design	515.309.3207	jpatton@rdgusa.com



Workshop Objectives

Gather final design comments prior to DFD 10% Peer Review

- Floor plans
- Exterior image
- Site Plan

Confirm Budget and Program

\$ 40 M

Confirm Schedule

Agenda (120 Minutes max)

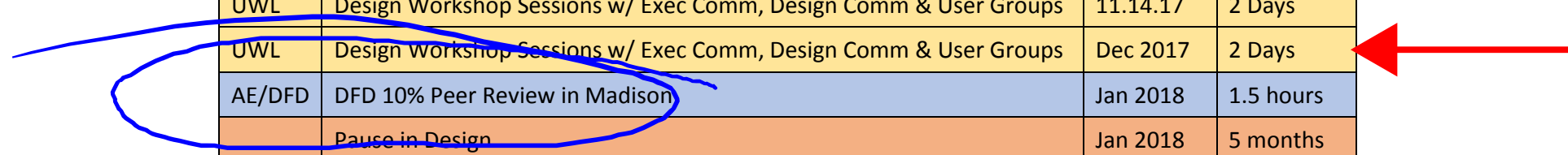
Review the Design

Seeking Committee Critique and Input



Preliminary Project Schedule

LOCATION	TASK	DATE	DURATION
UWL	Kick-off Meeting w/ Exec Comm	8.24.17	1.5 hours
AE	DFD 10% Document Preparation	Sept 2018	4 months
UWL	Design Meetings w/ Executive Comm & Design Comm	9.20.17	1 Day
UWL	Design Workshop Sessions w/ Exec Comm, Design Comm & User Groups	10.17.17	2 Days
UWL	Design Workshop Sessions w/ Exec Comm, Design Comm & User Groups	11.14.17	2 Days
UWL	Design Workshop Sessions w/ Exec Comm, Design Comm & User Groups	Dec 2017	2 Days
AE/DFD	DFD 10% Peer Review in Madison	Jan 2018	1.5 hours
	Pause in Design	Jan 2018	5 months
AE	DFD 35% Document Preparation	June 2018	4 months
UWL	Design Meetings w/ Executive Comm & Design Comm	July 2018	1 Day
UWL	Design Meetings w/ Executive Comm & Design Comm	Aug 2018	1 Day
UWL	Design Meetings w/ Executive Comm & Design Comm	Sept 2018	1 Day
AE/DFD	DFD 35% Preliminary Design Submittal & Review of Documents	Oct 2018	2 Months
UWL	Design Meetings w/ Executive Comm & Design Comm	Nov 2018	1 Day
AE	DFD 100% Document Preparation	Dec 2018	6 months
UWL	Design Meetings w/ Executive Comm & Design Comm	Jan 2019	1 Day
UWL	Design Workshop Sessions w/ Exec Comm, Design Comm & User Groups	Feb 2019	1 Day
UWL	Design Meetings w/ Executive Comm & Design Comm	Mar 2019	1 Day
UWL	Design Meetings w/ Executive Comm & Design Comm	April 2019	1 Day
AE/DFD	DFD 100% Final Design Submittal & Review of Documents	June 2019	2 Months
MAD	BOR/SBC Authority to Construct	Aug 2019	3 Months
DFD	Release of Bidding Documents	Nov 2019	3 Months
DFD	Receipt of Bids & Release of Construction Contracts	Feb 2020	3 Months
UWL	Construction of New Facility	May 2020	22 Months
UWL	Substantial Completion	Mar 2022	1 Month
UWL	Occupancy	April 2022	3 Months
UWL	Final Completion	July 2022	4 Months





SOUTH ELEVATION

NORTH ELEVATION



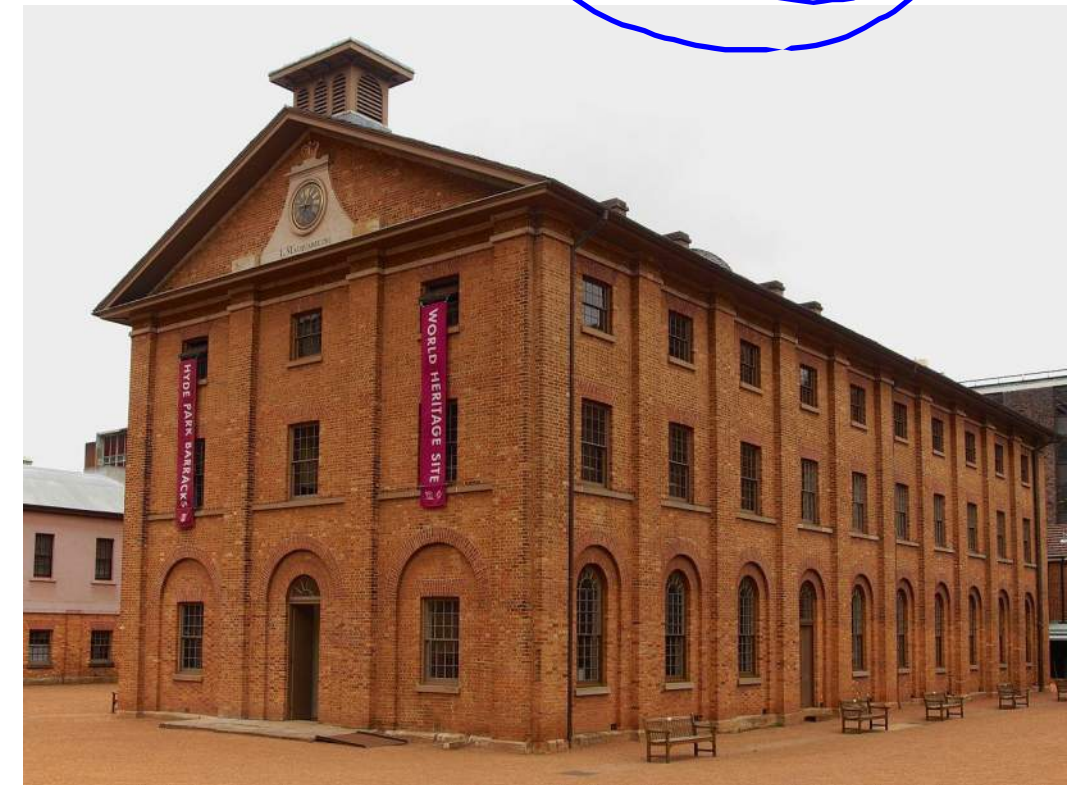
area w/ens

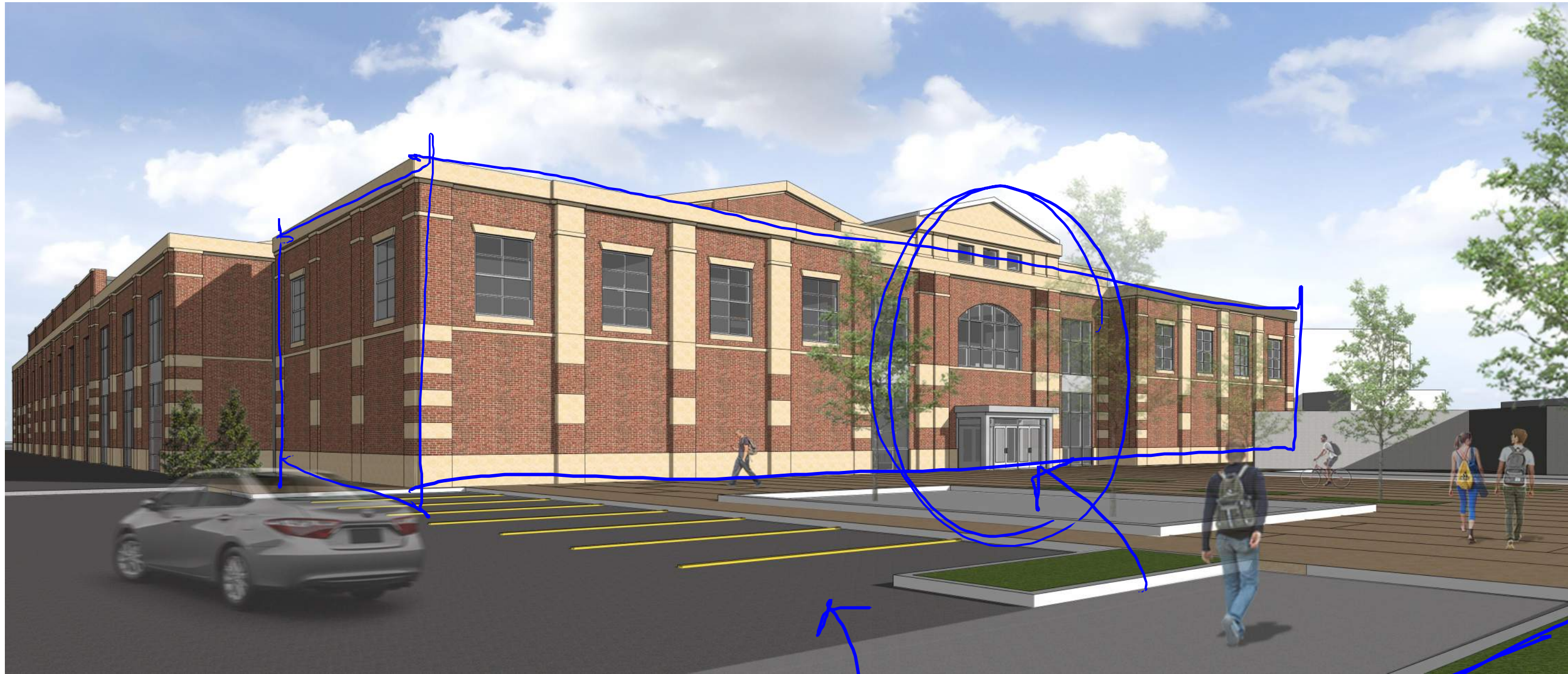
WEST ELEVATION



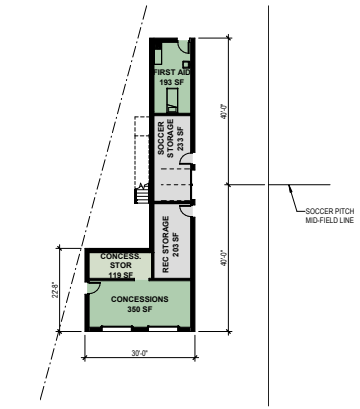
EAST ELEVATION



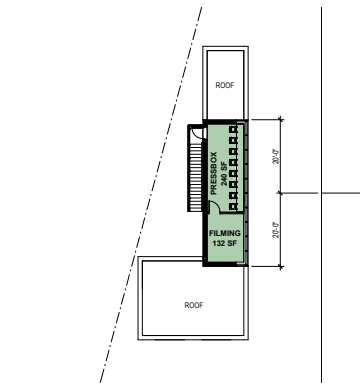




EXTERIOR PERSPECTIVE

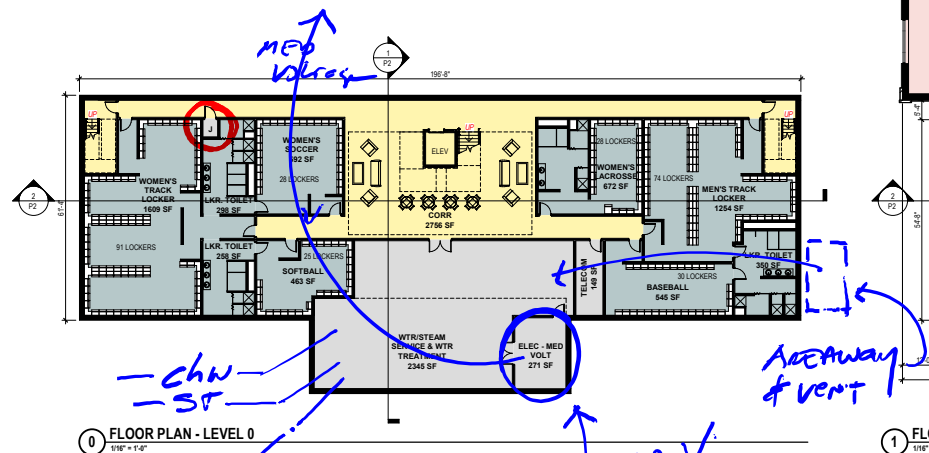


S1 FLOOR PLAN - LEVEL 1
1/8" = 1'-0"



S2 FLOOR PLAN - LEVEL 2
1/8" = 1'-0"

Full Fire Sprinkler
Full A/C

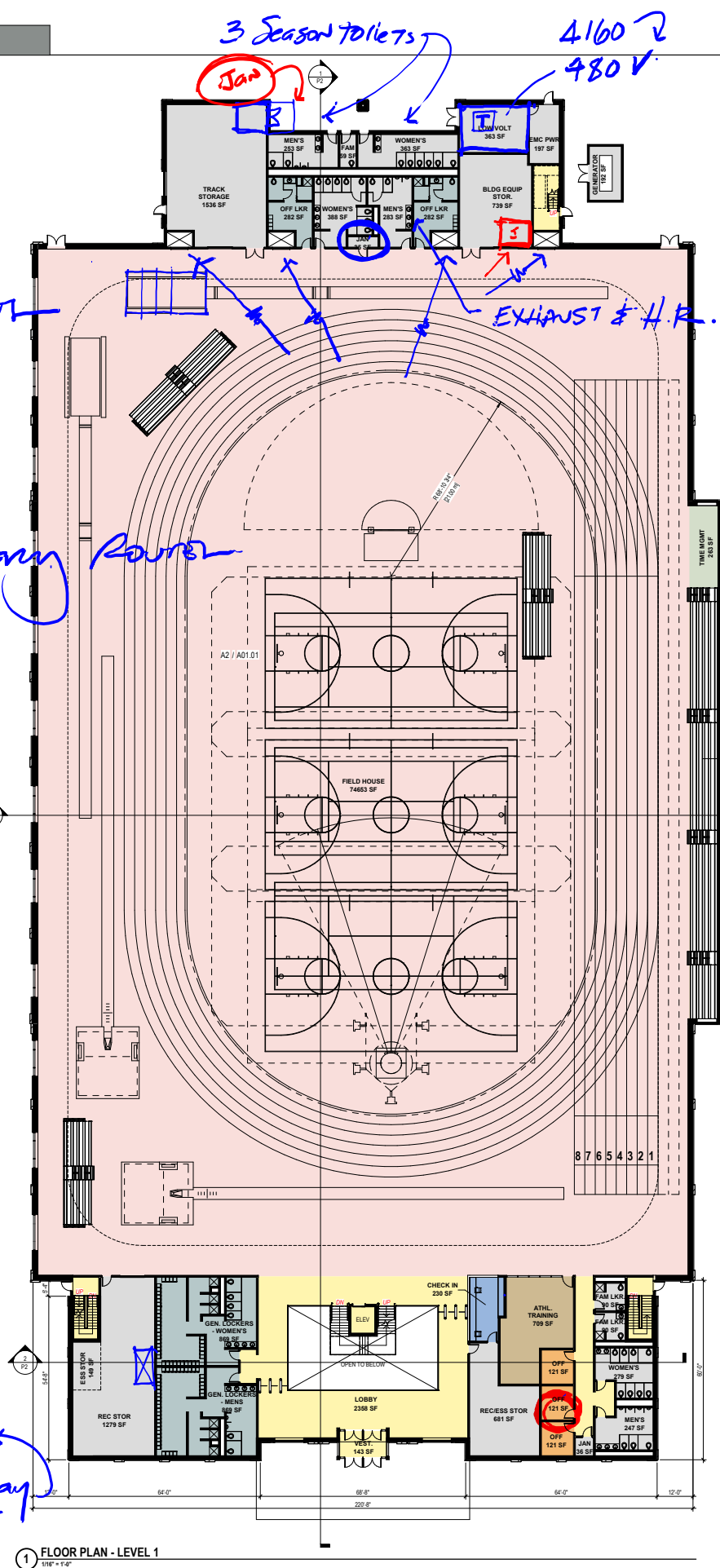


S0 FLOOR PLAN - LEVEL 0
1/8" = 1'-0"

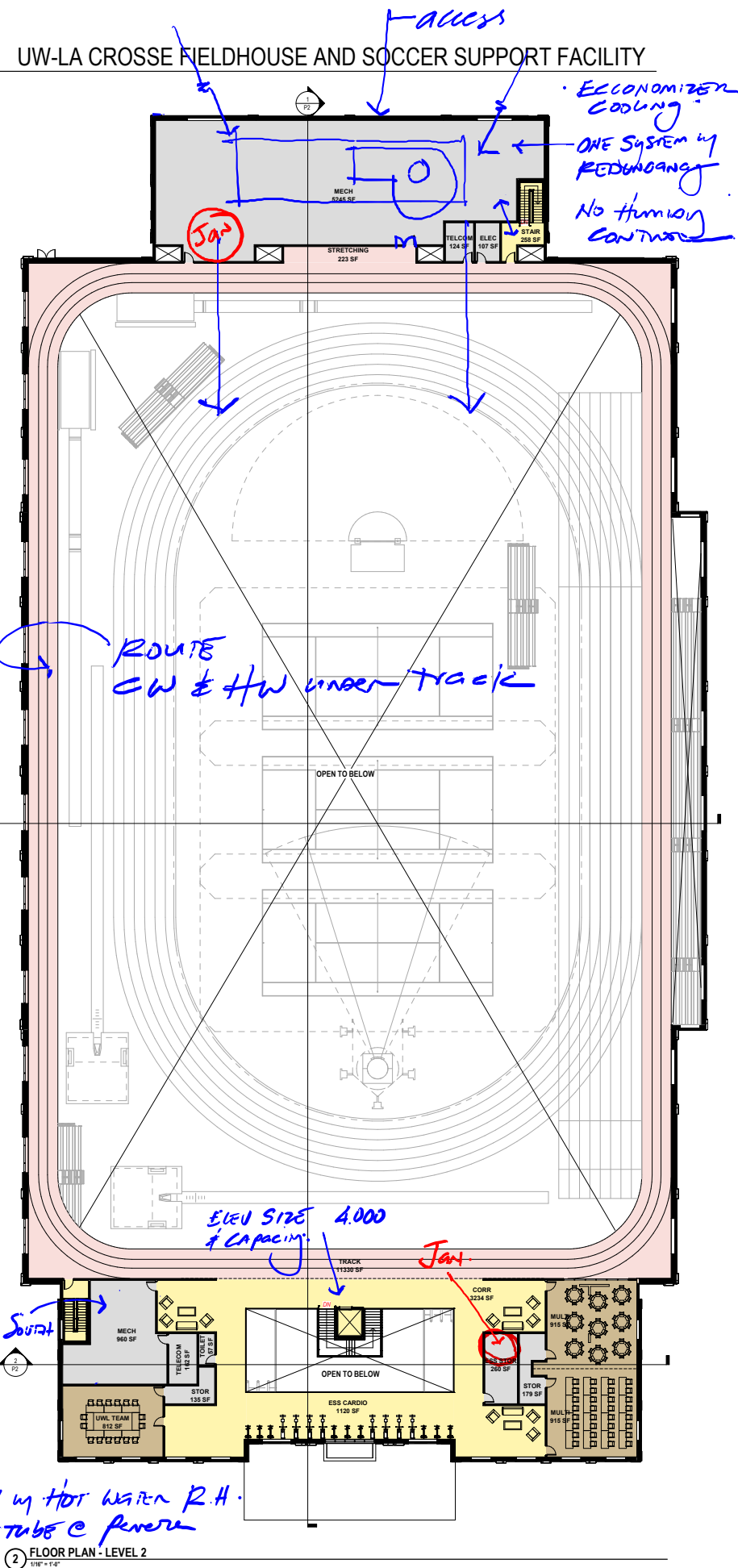
FLOOR PLANS

12/12/2017

NO FIRE PUMP REQ.



S1 FLOOR PLAN - LEVEL 1
1/8" = 1'-0"



S2 FLOOR PLAN - LEVEL 2
1/8" = 1'-0"

Commencement Events

Verify Sanitary Routes

3 Season Toilets
Jan
4160
480V

EXHAUST & H.R.

ROUTE CW & HW under track

ELEV SIZE 4,000
& CAPACITY

AH @ South wing

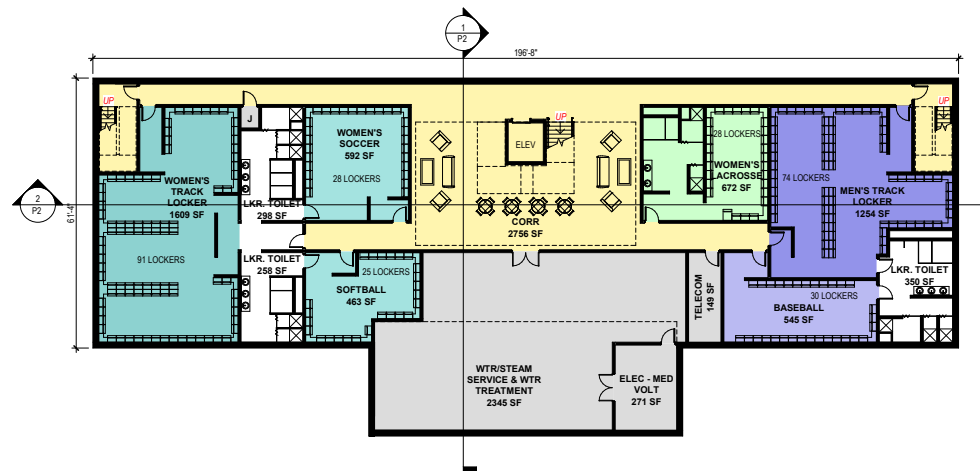
VAU w/ HOT WATER R.H.
FIN TUBE @ PERIM

ECONOMIZER COOLING
ONE SYSTEM w/ REDUNDANCY
NO HUMIDITY CONTROL

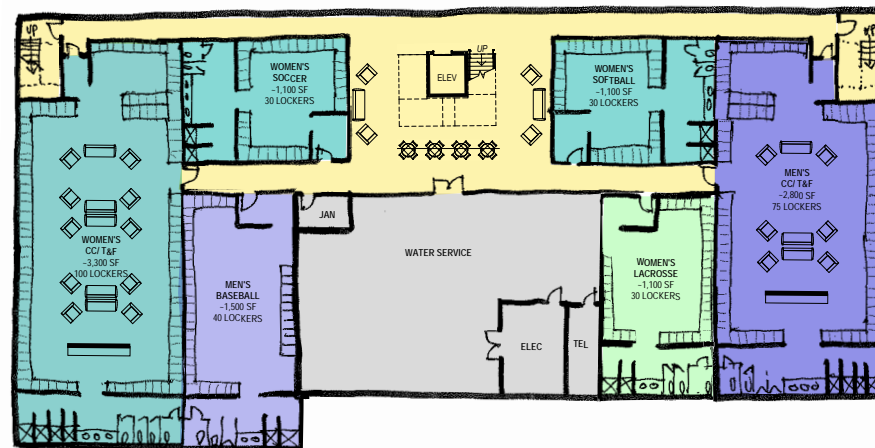
access

450

Jan



0 FLOOR PLAN - LEVEL 0
 1/16" = 1'-0"



0' FLOOR PLAN - LEVEL 0 - ENLARGED LOCKER OPTION
 1/16" = 1'-0"

Athletic Locker Counts				
December 12, 2017				
Team	Target	Current	Resolved	
W Track	90	100		
W Soccer	25	30		
W Softball	25	30		
W Lacrosse	25	30		
M Track	75	75		
M Baseball	30	40		

UW La Crosse Field House Concept
Equipment Storage Diagrams
December 12, 2017



Floor Plan - Level 1, Storage Detail (North End, West)

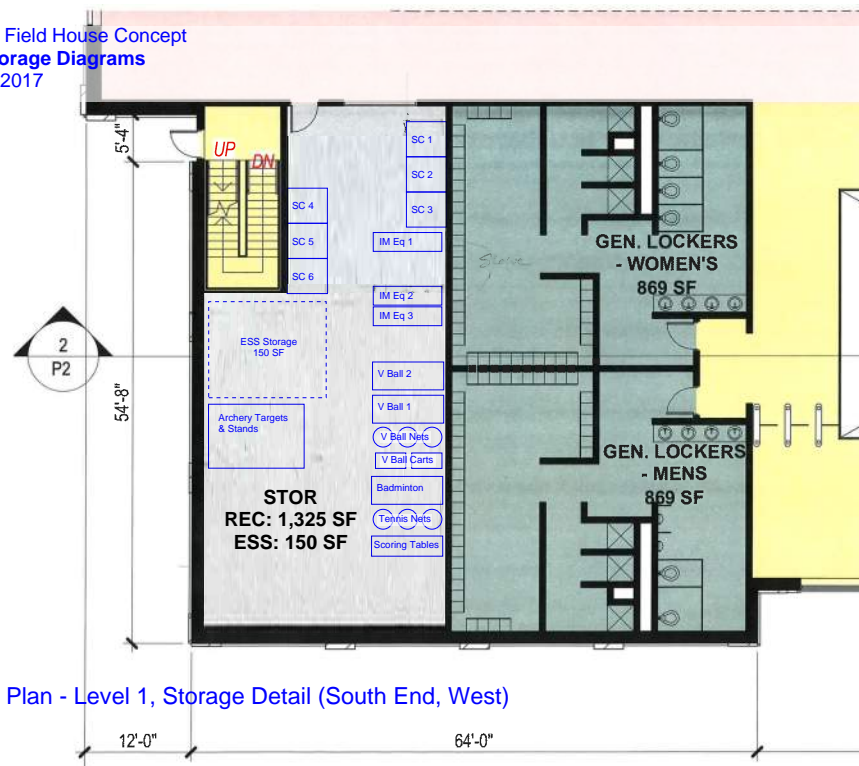
UW La Crosse Field House Concept
Equipment Storage Diagrams
December 12, 2017



Floor Plan - Level 1, Storage Detail (North End, East)

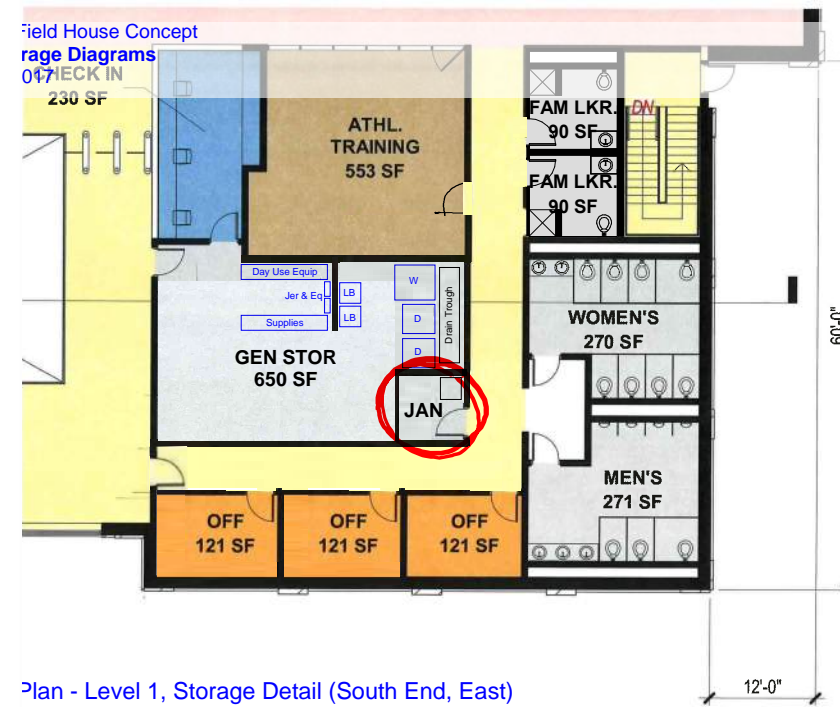


UW La Crosse Field House Concept
Equipment Storage Diagrams
December 12, 2017

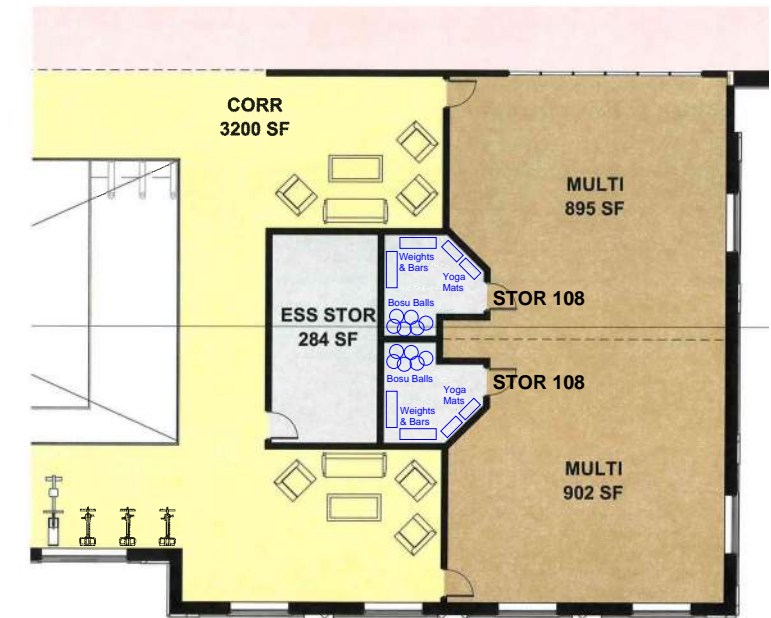


Floor Plan - Level 1, Storage Detail (South End, West)

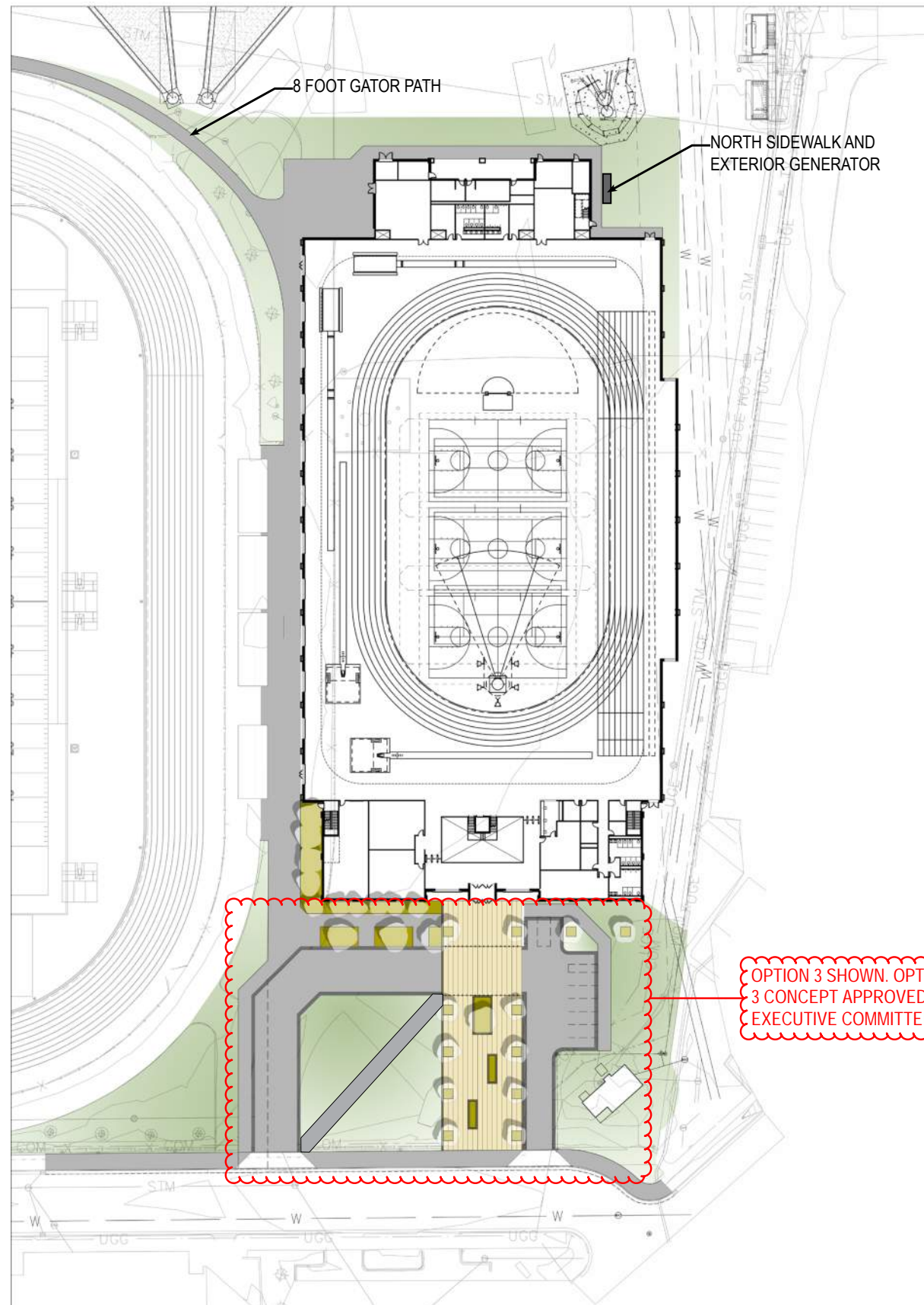
UW La Crosse Field House Concept
Equipment Storage Diagrams
December 12, 2017



Floor Plan - Level 1, Storage Detail (South End, East)

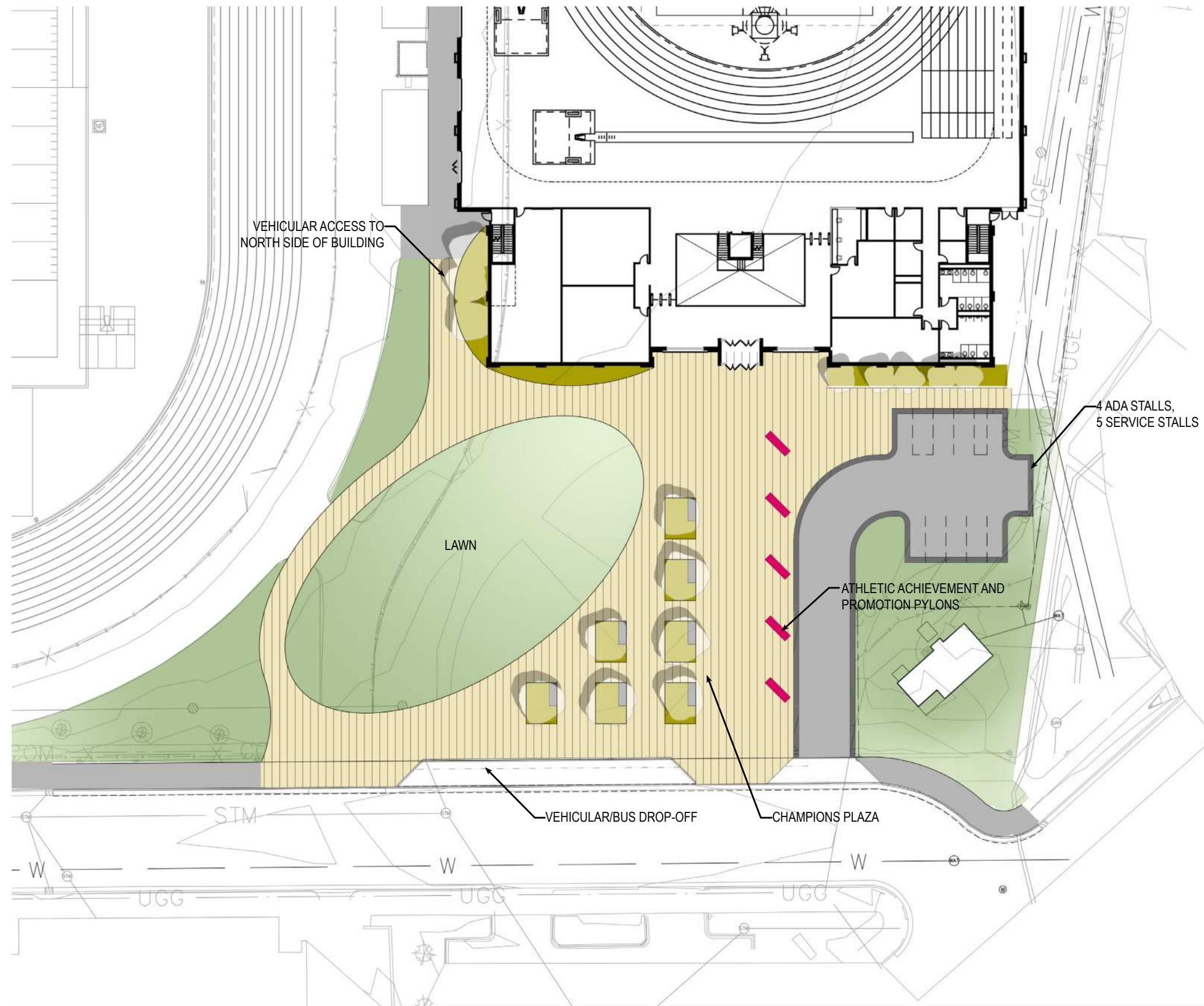


Floor Plan - Level 2, Storage Detail (South End, East)



Full Site Plan

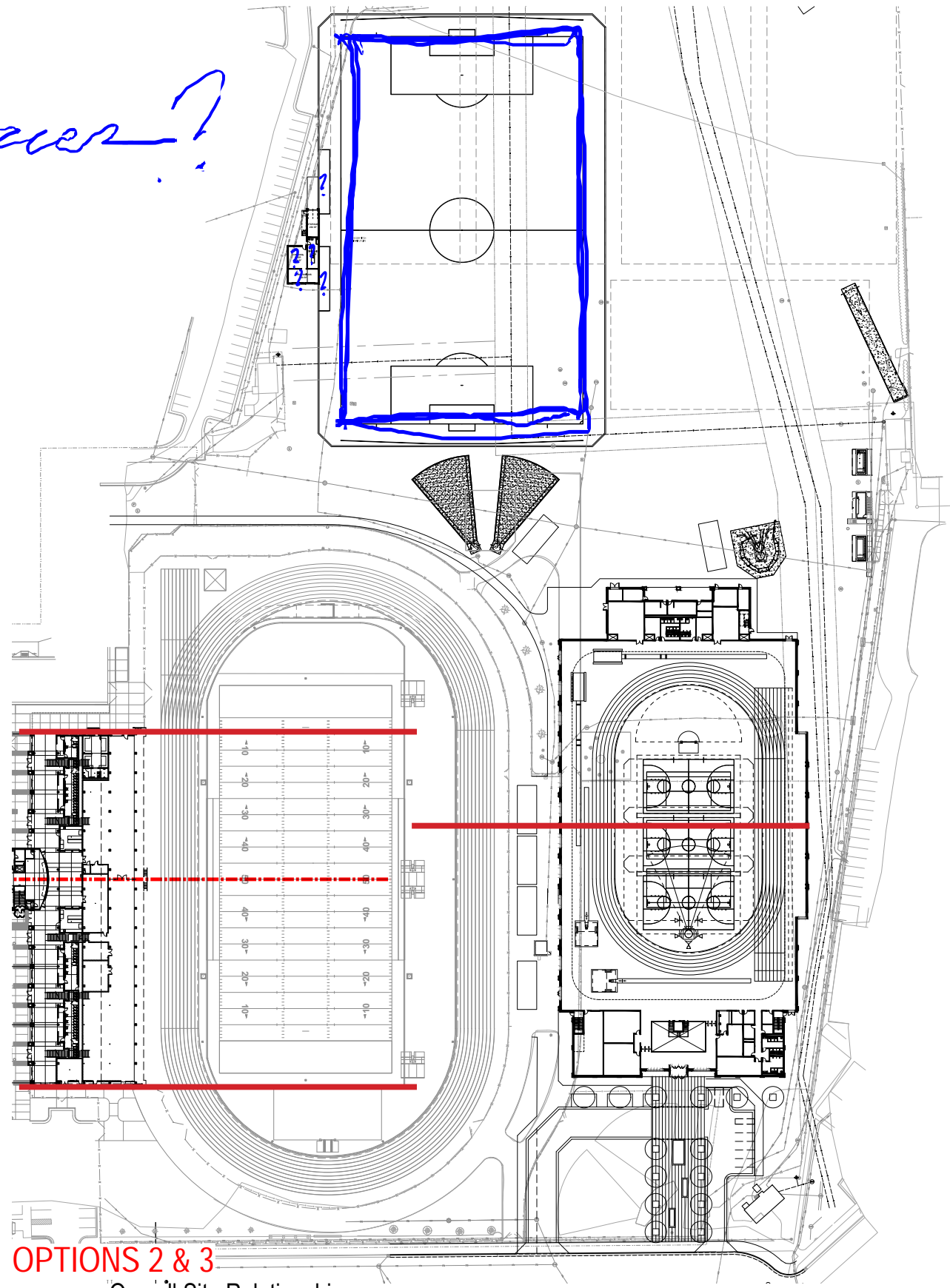




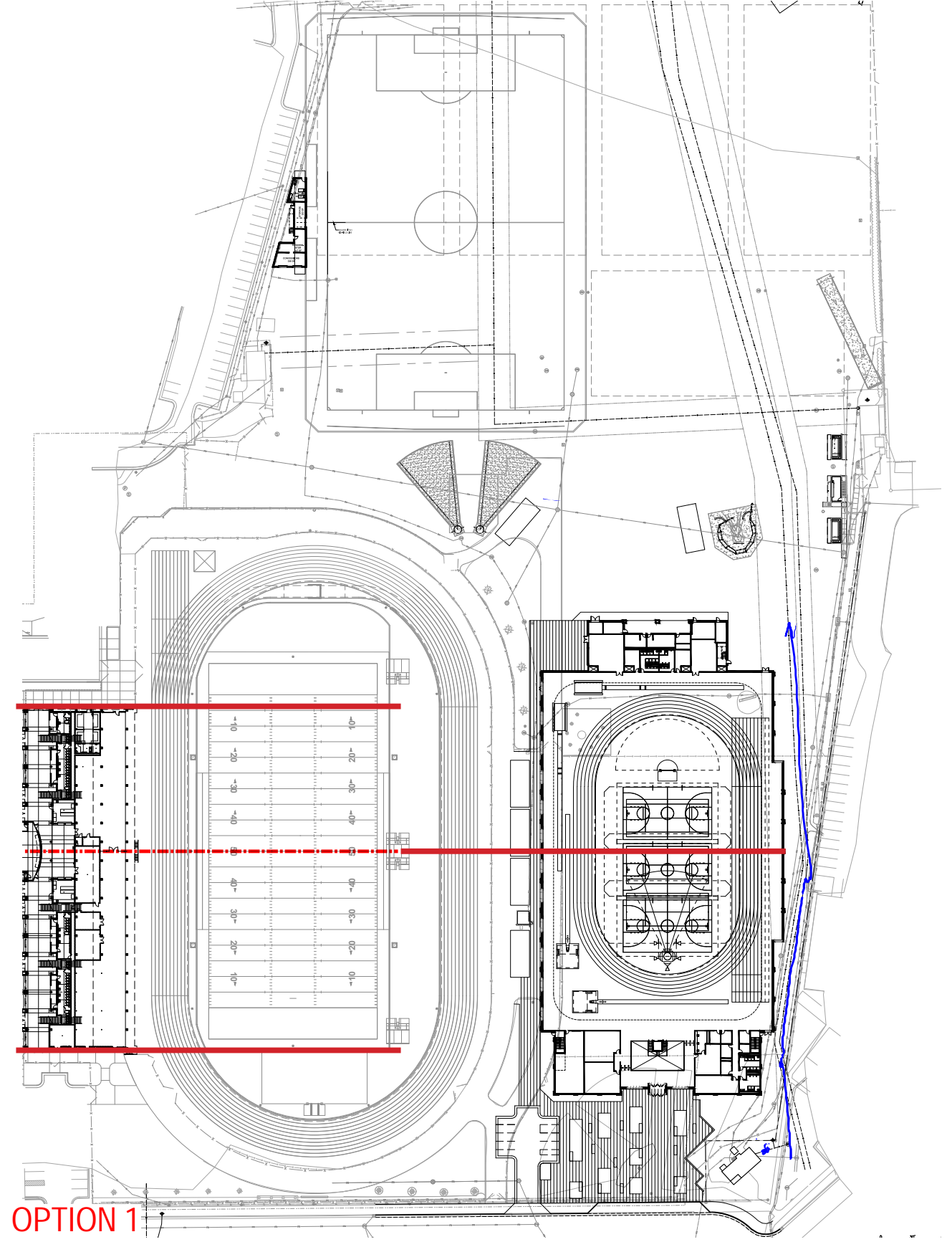
Entry Plaza Option 2



Soccer?

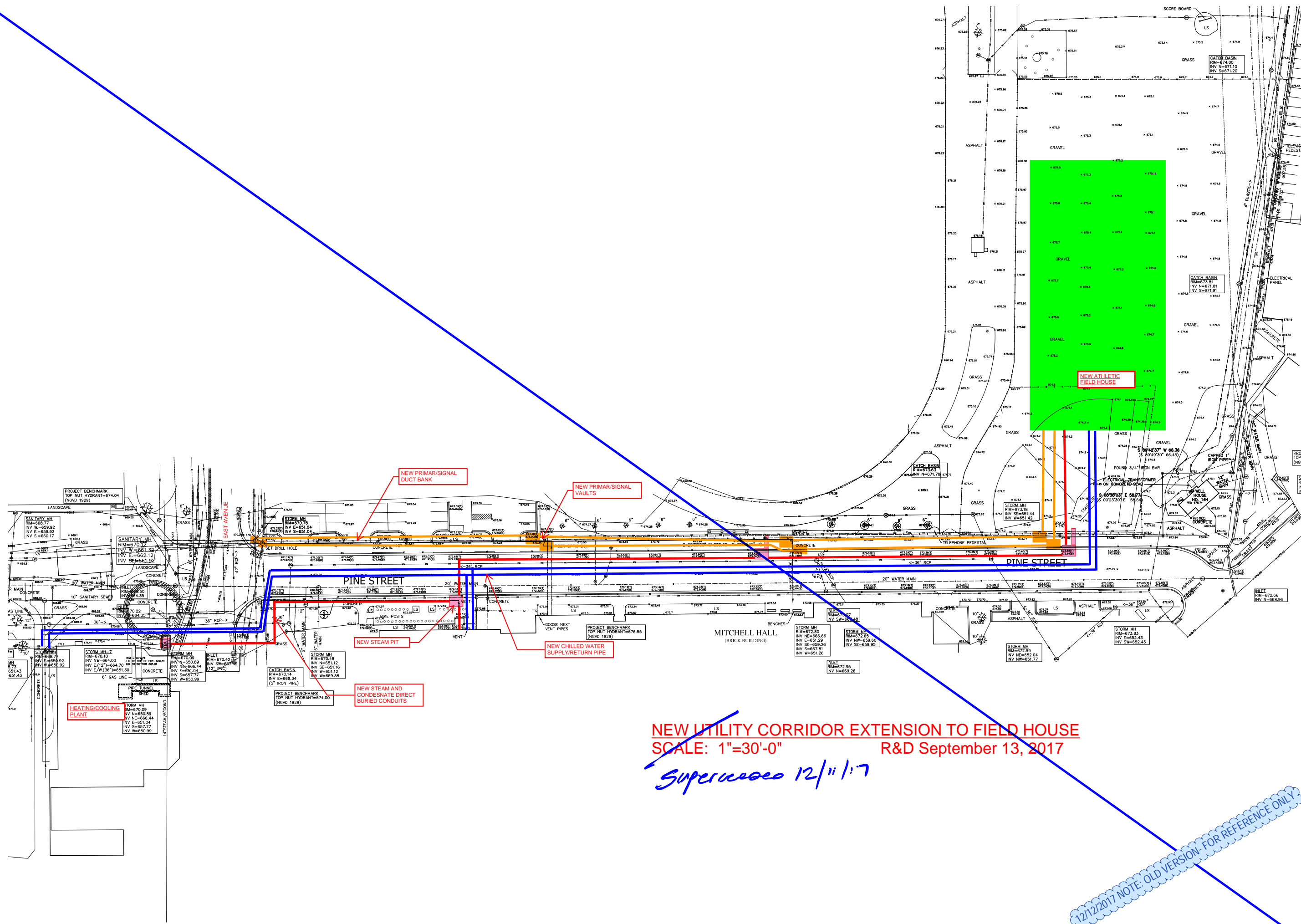


OPTIONS 2 & 3



OPTION 1

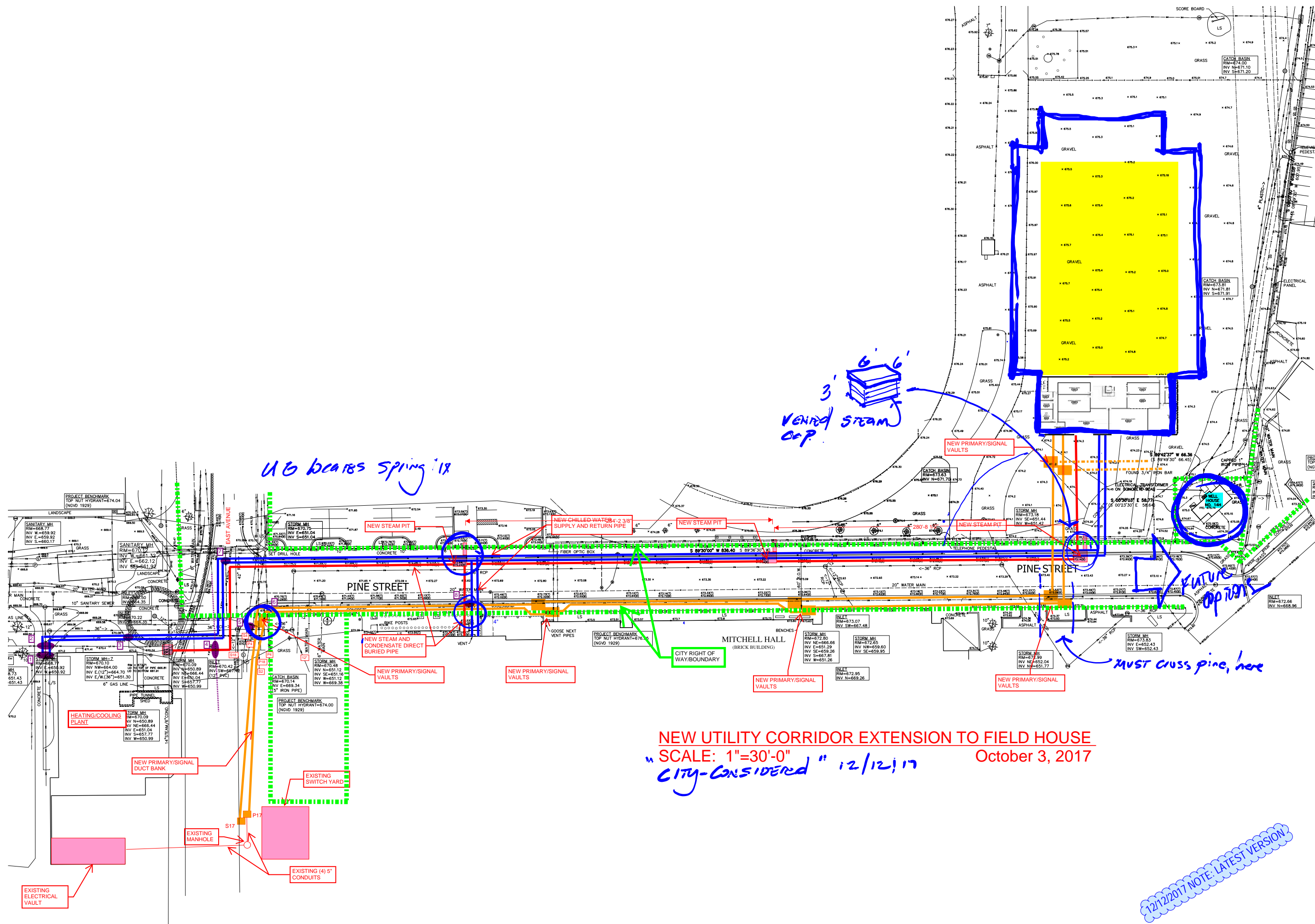




NEW UTILITY CORRIDOR EXTENSION TO FIELD HOUSE
SCALE: 1"=30'-0"
R&D September 13, 2017

Superceded 12/11/17

12/12/2017 NOTE: OLD VERSION- FOR REFERENCE ONLY



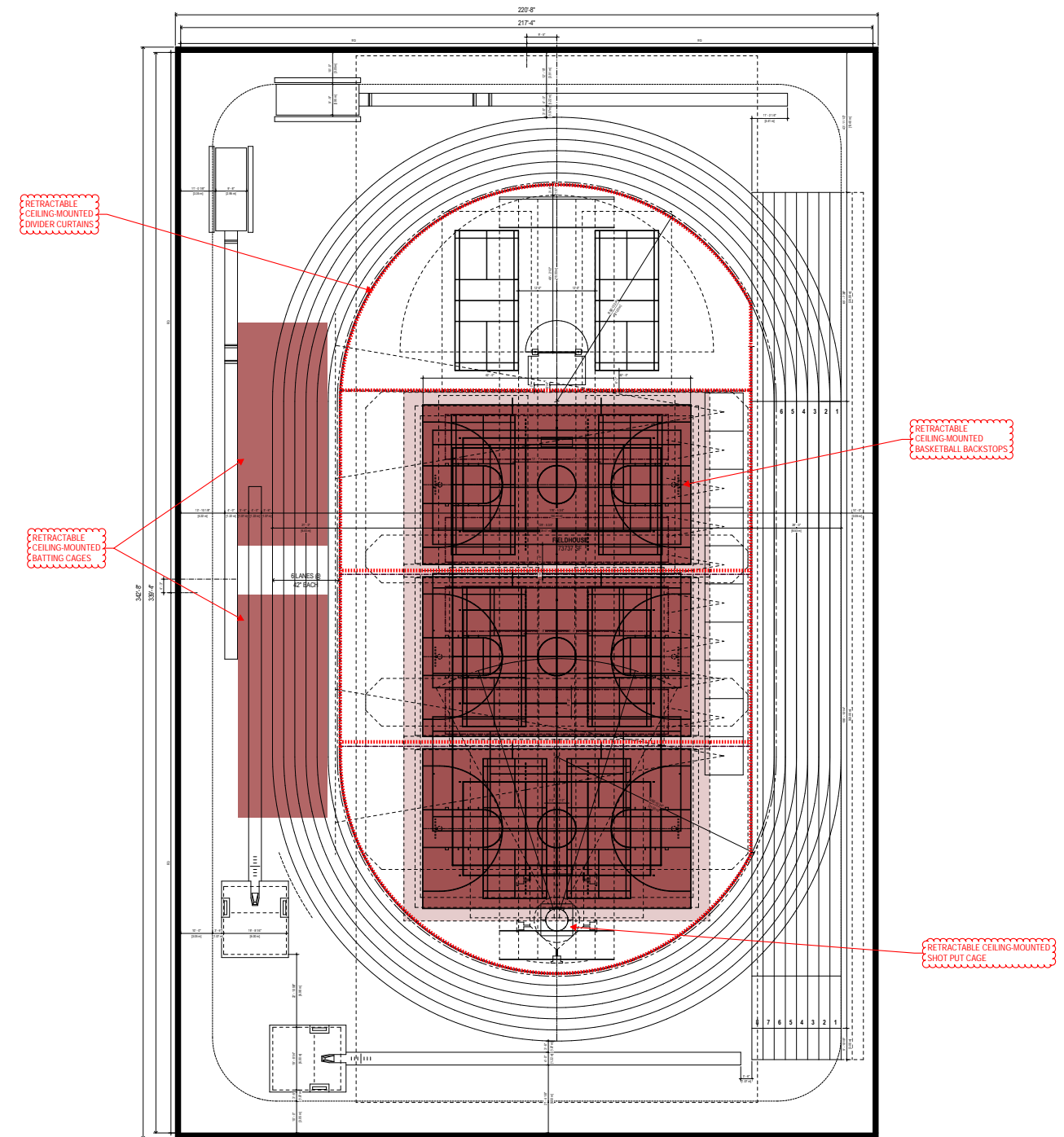
UG BEARS SPRING 18

3' VENTED STEAM COP

NEW UTILITY CORRIDOR EXTENSION TO FIELD HOUSE
 SCALE: 1"=30'-0"
 CITY-CONSIDERED 12/12/17

October 3, 2017

12/12/2017 NOTE: LATEST VERSION



21M RADIUS

