



PROGRAM CONFIRMATION: CHEMISTRY

December 22, 2020

Pleased to see you again



Val Schute, AIA
Principal-in-Charge
River Architects



Mike Adler, AIA
Project Architect/Project Manager
River Architects



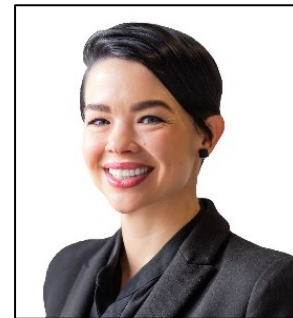
**Coty Sandberg, AIA,
LEED AP BD+C**
Lead Design Architect
SmithGroup



**Emma Cuciurean-Zapan, AIA,
LEED AP BD+C**
Architect
SmithGroup



**David Johnson, AIA,
LEED AP BD+C**
Design Strategist + Programming
SmithGroup



**Lana Zoet, AIA,
LEED AP BD+C, Well AP**
Sustainability
SmithGroup



**Gregg Calpino, PLA,
ALSA, LEED AP BD+C**
Landscape Architect
SmithGroup

Agenda

- **Project Overview**
- **Program Overview**
- **Detailed Program Review**
- **Quality of Shared Spaces**

Goals for Today:

- **Understand priorities/vision for Phase II**
- **High level review and confirmation of program**
- **Consensus on changes since 10% report issuance**

PSSC PHASE 1





PHASE I
PLATFORM

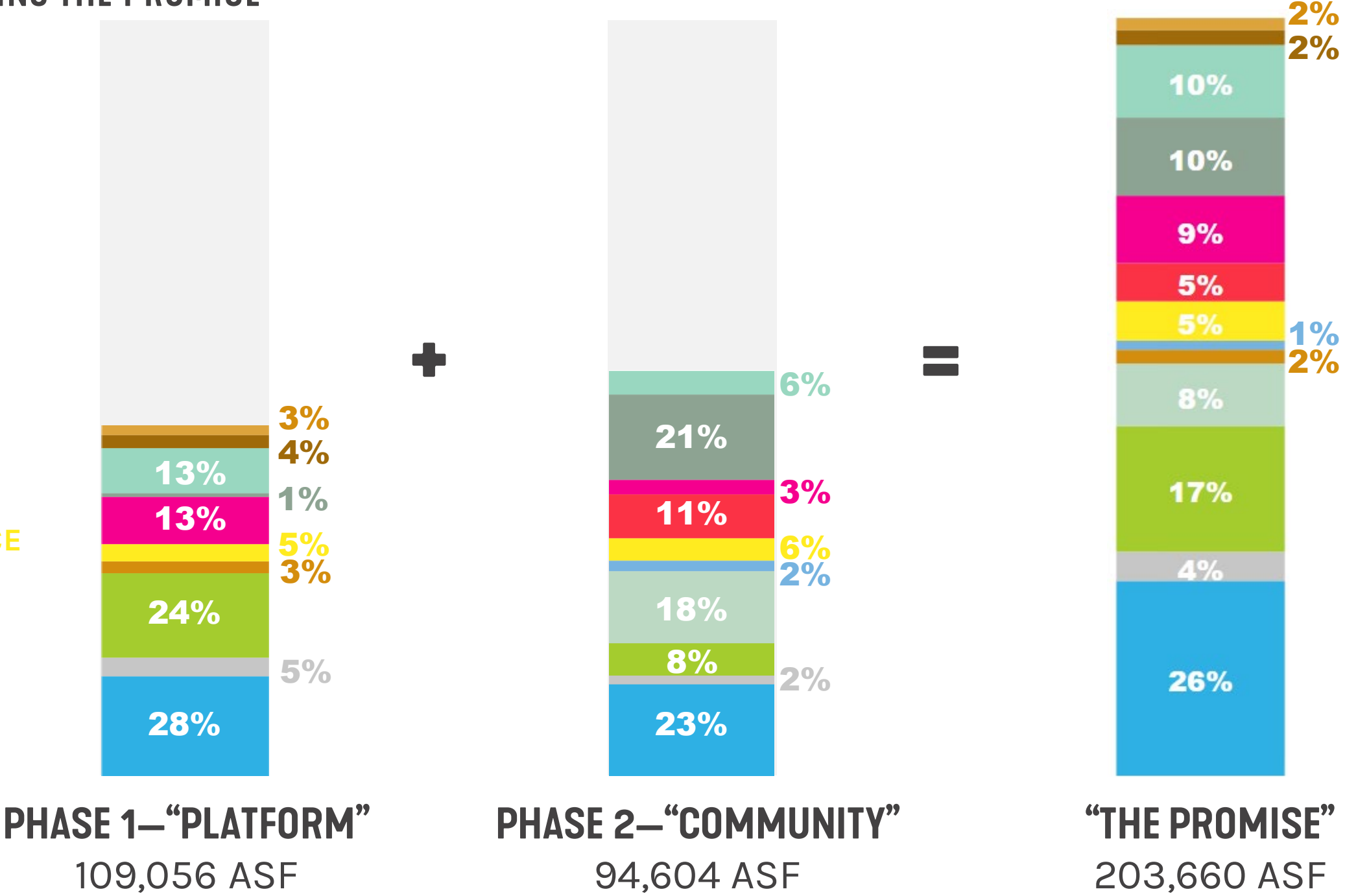
PROMISE

PHASE II
COMMUNITY

PRAIRIE SPRING SCIENCE CENTER IN PHASES - UNITS

SEEING THE WHOLE, COMPLETING THE PROMISE

- RIVER STUDIES CENTER
- RADIATION CENTER
- PHYSICS
- MISC. INSTR. / SUPPORT
- MICROBIOLOGY
- MATHEMATICS
- GEOGRAPHY & EARTH SCIENCE
- DEAN'S OFFICE
- CORE LABS
- CLASSROOMS
- CHEMISTRY
- BUILDING SUPPORT
- BIOLOGY



PHASE 1

THEMATIC ORGANIZATION

SUPERCLUSTER	CLUSTER	DEPARTMENT						
		Biology	Chemistry & Biochemistry	Geography & Earth Science	Mathematics	Microbiology	Physics	Unaffiliated
Cell / Molecular	Biochemistry & Biophysics	●	●				●	
	Cellular	●						
	Microbiology					●		
	Molecular Genetics	●				●		
Environmental	Atmospheric		●					
	BioMath	●			●			
	River Studies	●	●					
	Soils & Sediments			●		●		
	Terrestrial	●						
Null	Computational	●	●	●				●
	Imaging / Materials		●				●	
	Physiology / Nutrition	●						●
	Radiation		●				●	
	STEP	●	●	●	●		●	
	Synthesis		●					
	Theorists						●	
	Unassigned			●			●	

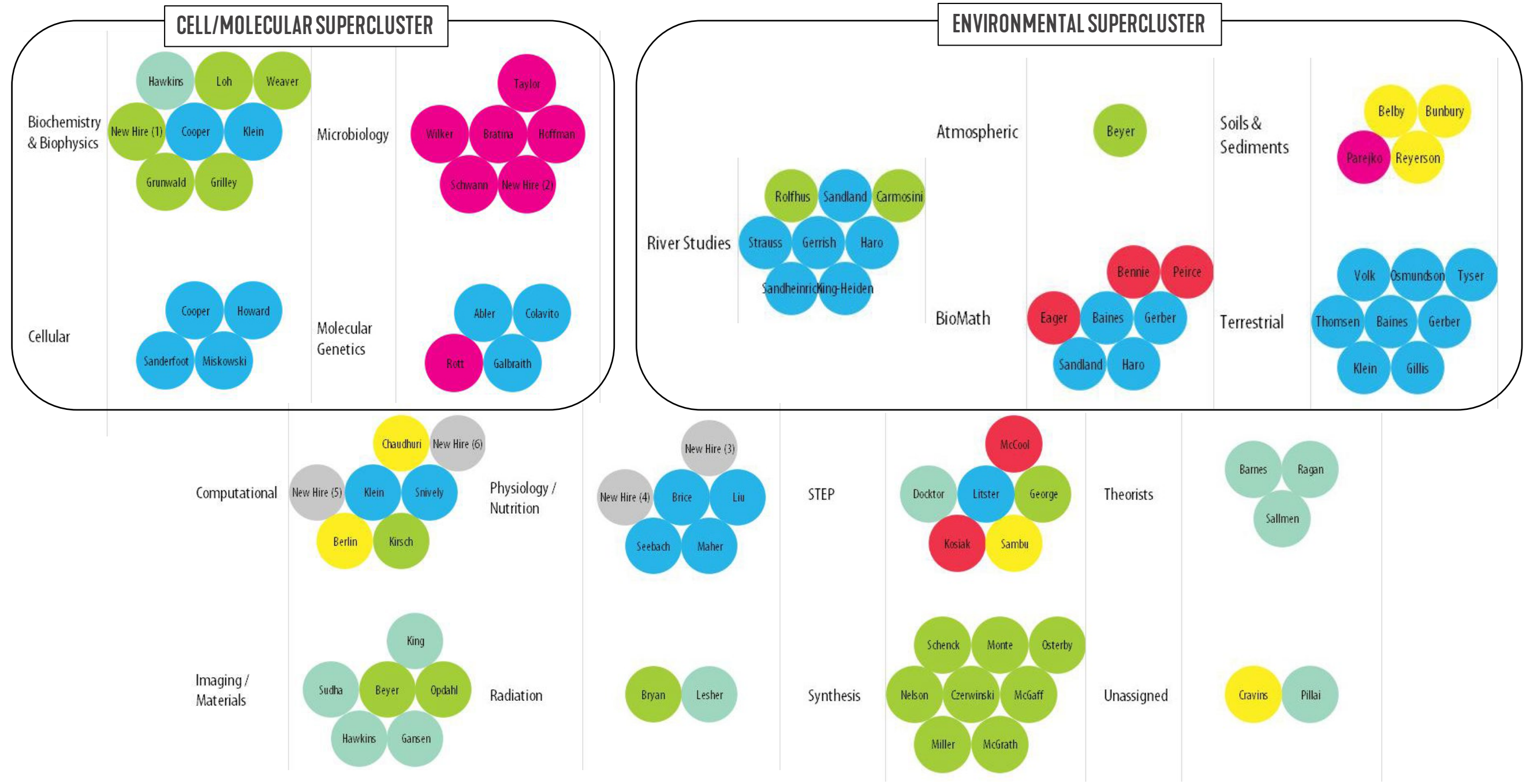
Atmospheric	●	Radiation	● ●
Biochemistry & Biophysics	● ● ● ●	River Studies	● ● ● ●
BioMath	● ● ● ●	Soils & Sediments	● ● ● ●
Cellular	● ● ● ● ● ●	STEP	● ● ● ● ● ●
Computational	● ● ● ● ● ●	Synthesis	● ● ● ● ● ●
Imaging / Materials	● ● ● ● ● ●	Terrestrial	● ● ● ● ● ●
Microbiology	● ● ● ● ● ●	Theorists	● ● ● ● ● ●
Molecular Genetics	● ● ● ● ● ●	Unassigned	● ● ● ● ● ●
Physiology / Nutrition	● ● ● ● ● ●		

DEPARTMENT

- Biology
- Chemistry & Biochemistry
- Geography & Earth Science
- Mathematics
- Microbiology
- Physics
- Unaffiliated

PHASE 1

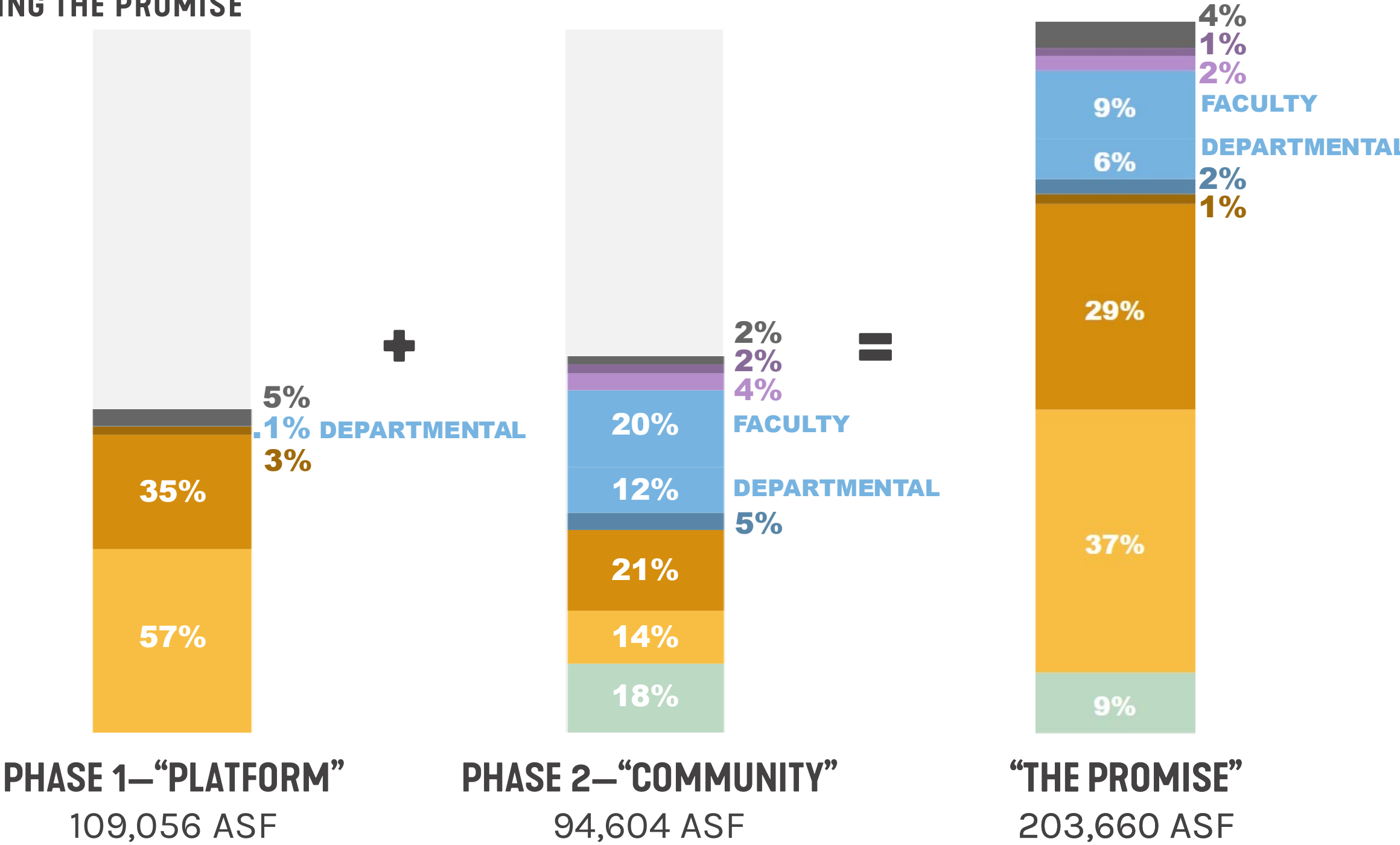
THEMATIC ORGANIZATION



PRAIRIE SPRING SCIENCE CENTER IN PHASES – SPACE TYPES

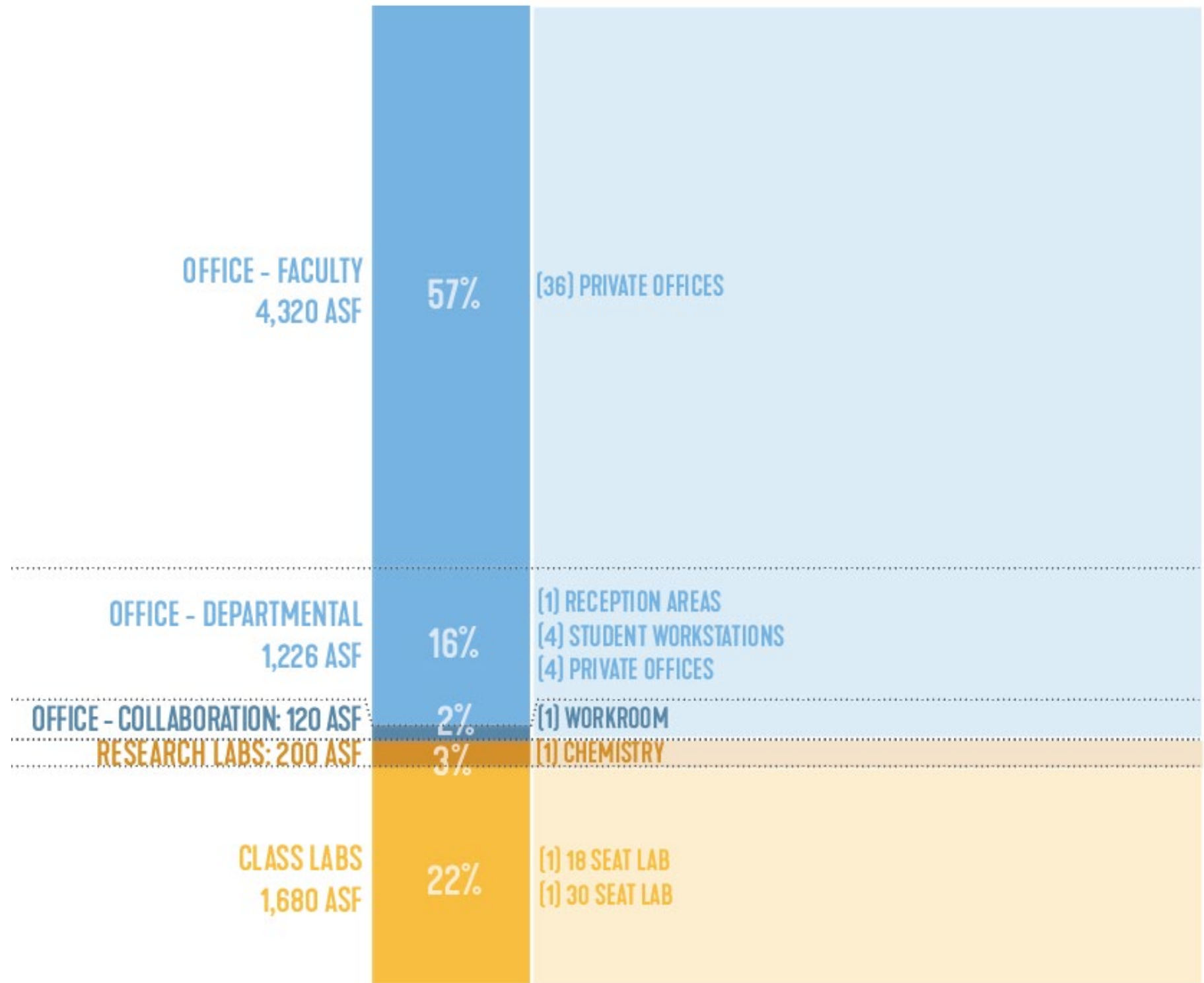
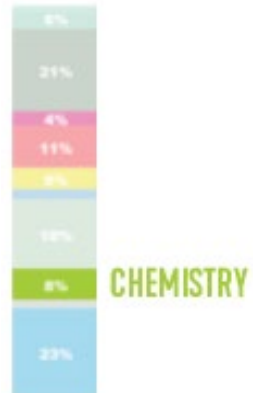
SEEING THE WHOLE, COMPLETING THE PROMISE

- BUILDING SUPPORT
- SHARED – COLLABORATION
- STUDENT – COLLABORATION
- OFFICE – FACULTY
- OFFICE – DEPARTMENTAL
- OFFICE – COLLABORATION
- CORE LAB
- RESEARCH LABS
- CLASS LABS
- CLASSROOMS



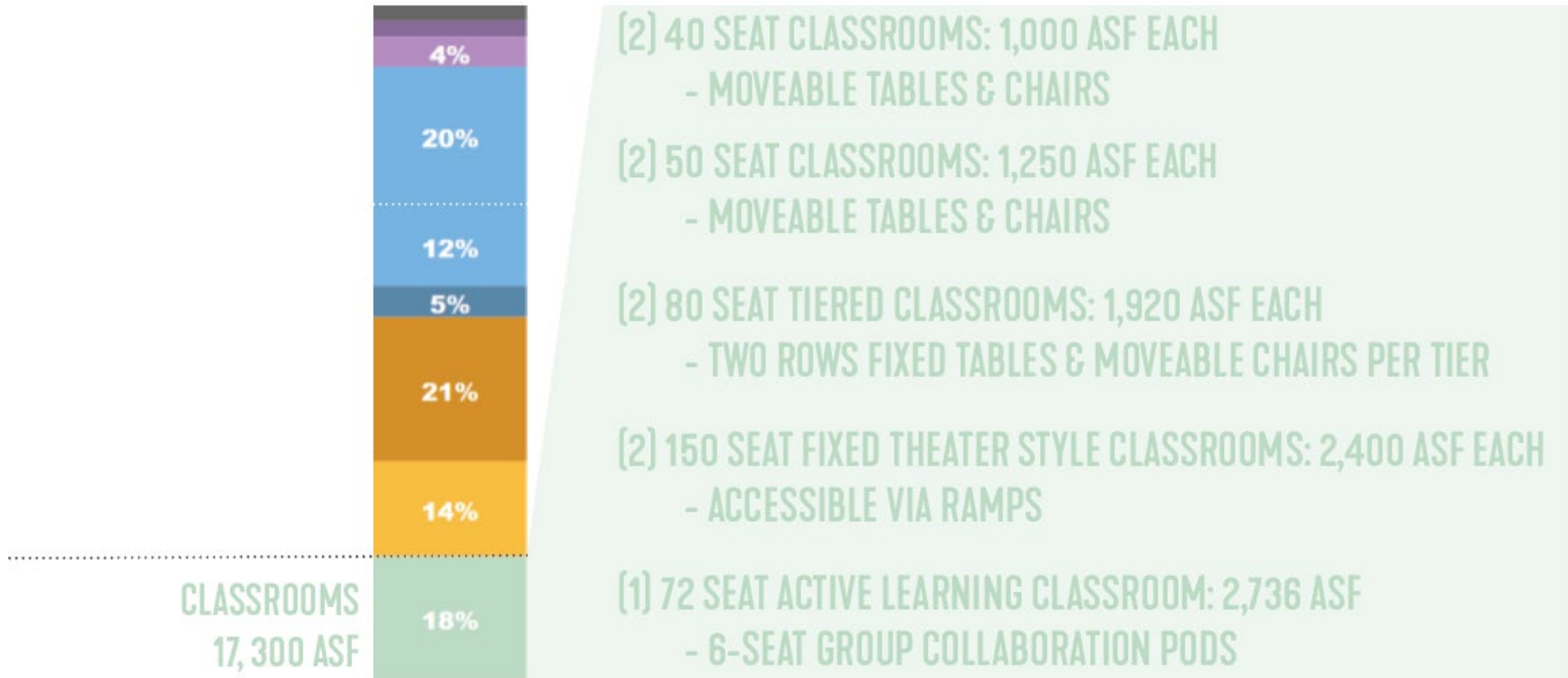
PROGRAM OVERVIEW

CHEMISTRY



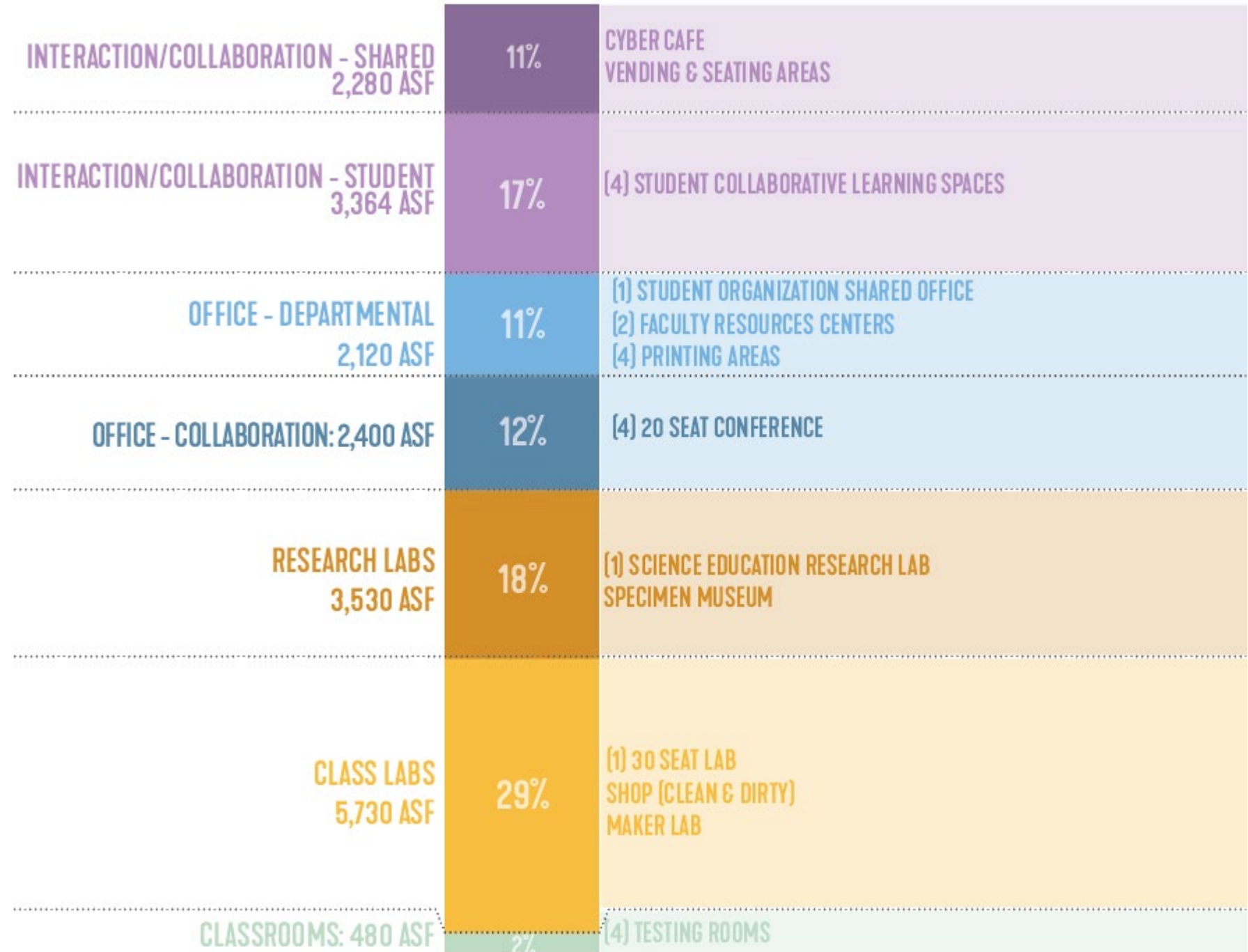
PROGRAM OVERVIEW

CLASSROOMS



PROGRAM OVERVIEW

MISC. INSTRUCTIONAL SUPPORT



A winter scene on a university campus. The ground is covered in a thick layer of snow. In the background, there is a large, multi-story brick building with a prominent tower. Several people are walking across the snow-covered area. Bare trees are scattered throughout the scene, and a few evergreen trees are visible on the left. The sky is overcast and grey.

NEXT STEPS

- WORK PLAN REVIEW
- JANUARY MEETING AGENDA

Work Plan

OVERALL PROJECT SCHEDULE – PRAIRIE SPRINGS PHASE II

