



PROGRAMMING SESSION NO. 2 - GEOGRAPHY

January 27, 2021

Agenda

- **Report Out**
 - **Program Updates**
 - **Adjacencies**
- **Planning Opportunities**
 - **The Link**
 - **Departmental Space Organization**
- **Technology**

A group of four students (three women and one man) are smiling and posing for a selfie outdoors. The woman on the far left is holding a smartphone up to take the photo. They are all wearing dark jackets with maroon and white horizontal stripes on the sleeves. In the background, there is a large, multi-story brick building with many windows, and a green lawn in the foreground.

WHAT WE HEARD

- PROGRAM UPDATES
- SUSTAINABILITY CHARETTE OUTCOMES

PROJECT VISION



STUDENT CENTERED

Encourage faculty-student interaction
Meet students on neutral ground
Connect students to research



COLLABORATIVE

Unite departments
Facilitate variety of interactions
Complement the research in Phase 1



FACE FORWARD

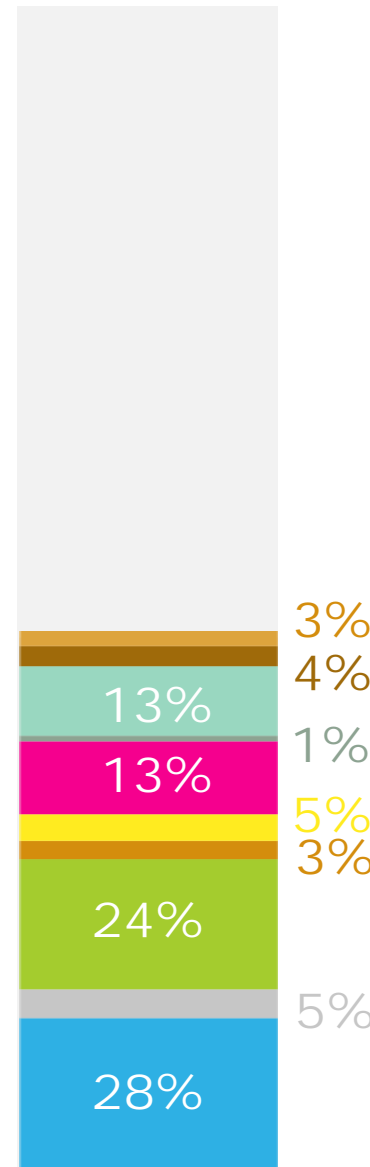
De-mystify the sciences
Celebrate the work
Recruit and retain talent

PRAIRIE SPRING SCIENCE CENTER IN PHASES - UNITS

2017

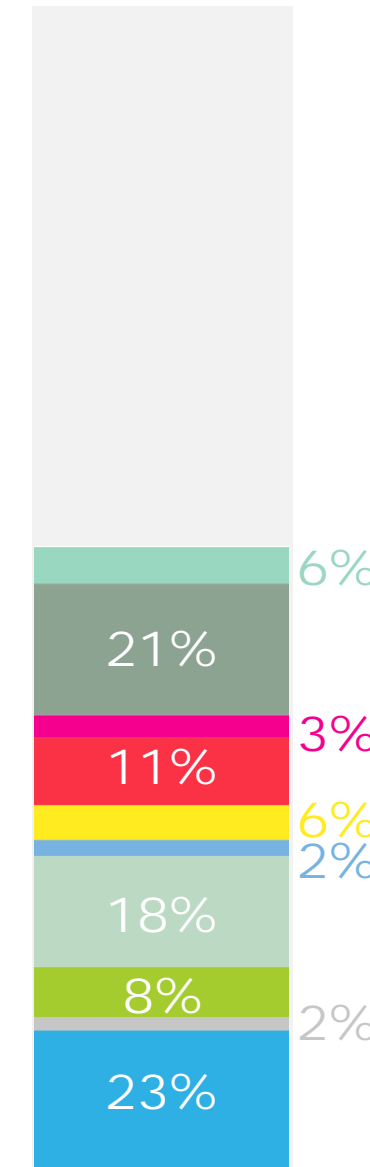
- RIVER STUDIES CENTER
- RADIATION CENTER
- PHYSICS
- MISC. INSTR. / SUPPORT
- MICROBIOLOGY
- MATHEMATICS
- GEOGRAPHY & EARTH SCIENCE
- DEAN'S OFFICE
- CORE LABS
- CLASSROOMS
- CHEMISTRY
- BUILDING SUPPORT
- BIOLOGY

PHASE 1—"PLATFORM"
109,056 ASF



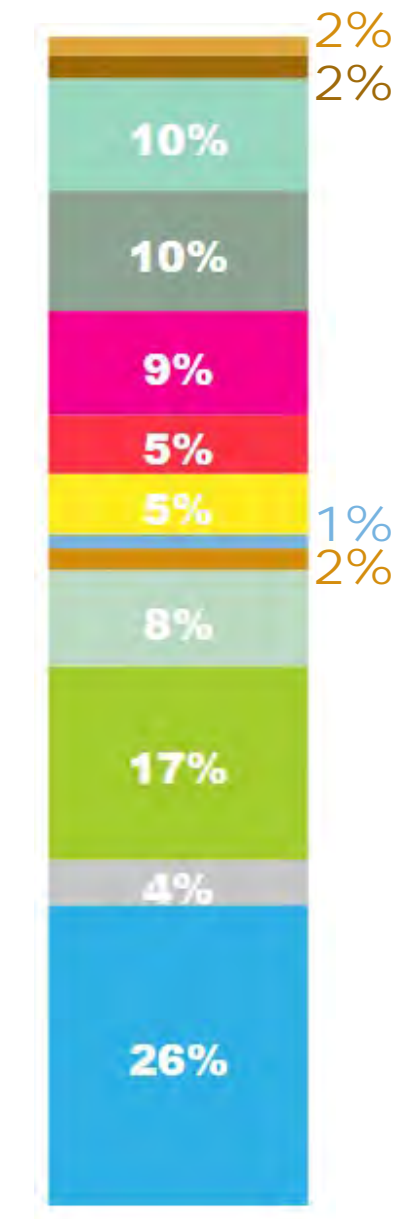
+

PHASE 2—"COMMUNITY"
94,604 ASF



=

"THE PROMISE"
203,660 ASF

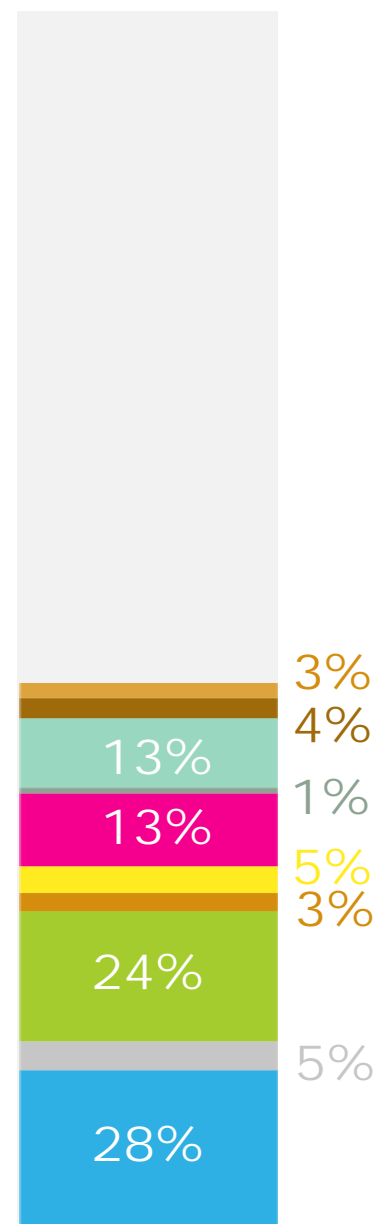


PRAIRIE SPRING SCIENCE CENTER IN PHASES - UNITS

2021 UPDATE

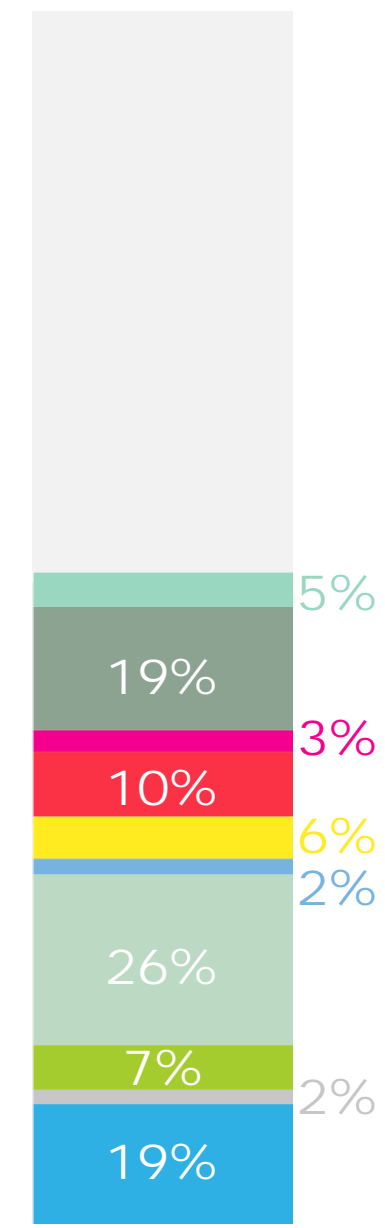
- RIVER STUDIES CENTER
- RADIATION CENTER
- PHYSICS
- MISC. INSTR. / SUPPORT
- MICROBIOLOGY
- MATHEMATICS
- GEOGRAPHY & EARTH SCIENCE
- DEAN'S OFFICE
- CORE LABS
- CLASSROOMS
- CHEMISTRY
- BUILDING SUPPORT
- BIOLOGY

PHASE 1—"PLATFORM"
109,056 ASF



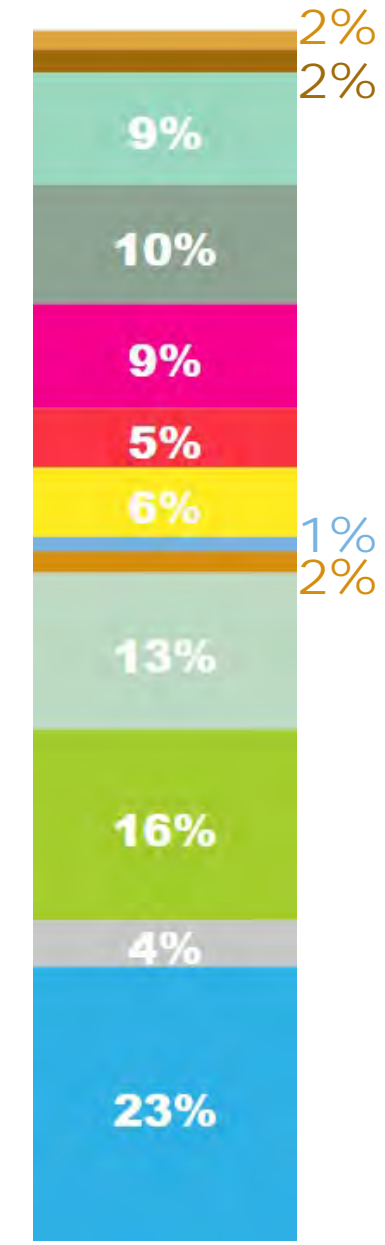
+

PHASE 2—"COMMUNITY"
104,484 ASF



=

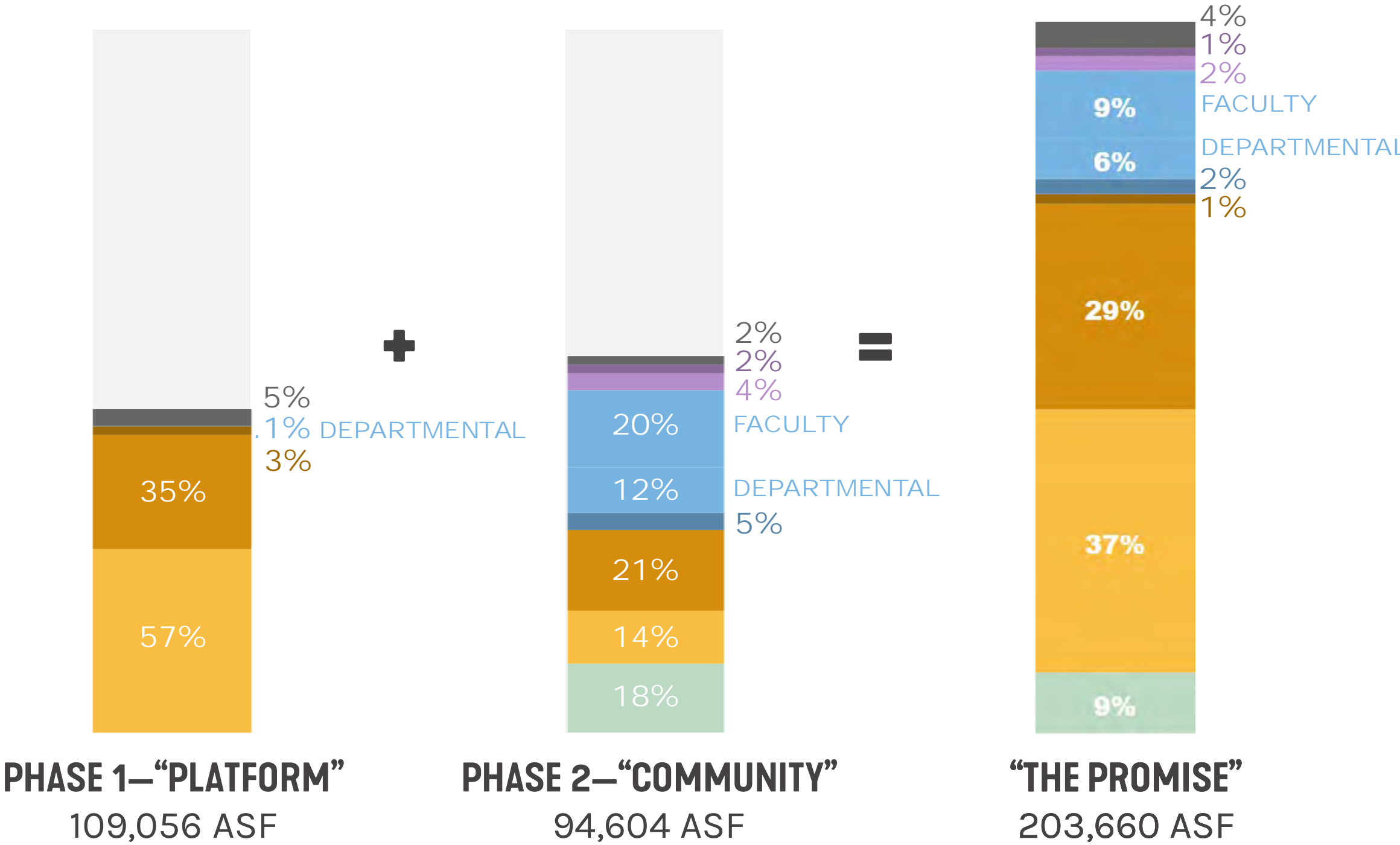
"THE PROMISE"
211,124 ASF



PRAIRIE SPRING SCIENCE CENTER IN PHASES – SPACE TYPES

2017

- BUILDING SUPPORT
- SHARED – COLLABORATION
- STUDENT – COLLABORATION
- OFFICE – FACULTY
- OFFICE – DEPARTMENTAL
- OFFICE – COLLABORATION
- CORE LAB
- RESEARCH LABS
- CLASS LABS
- CLASSROOMS

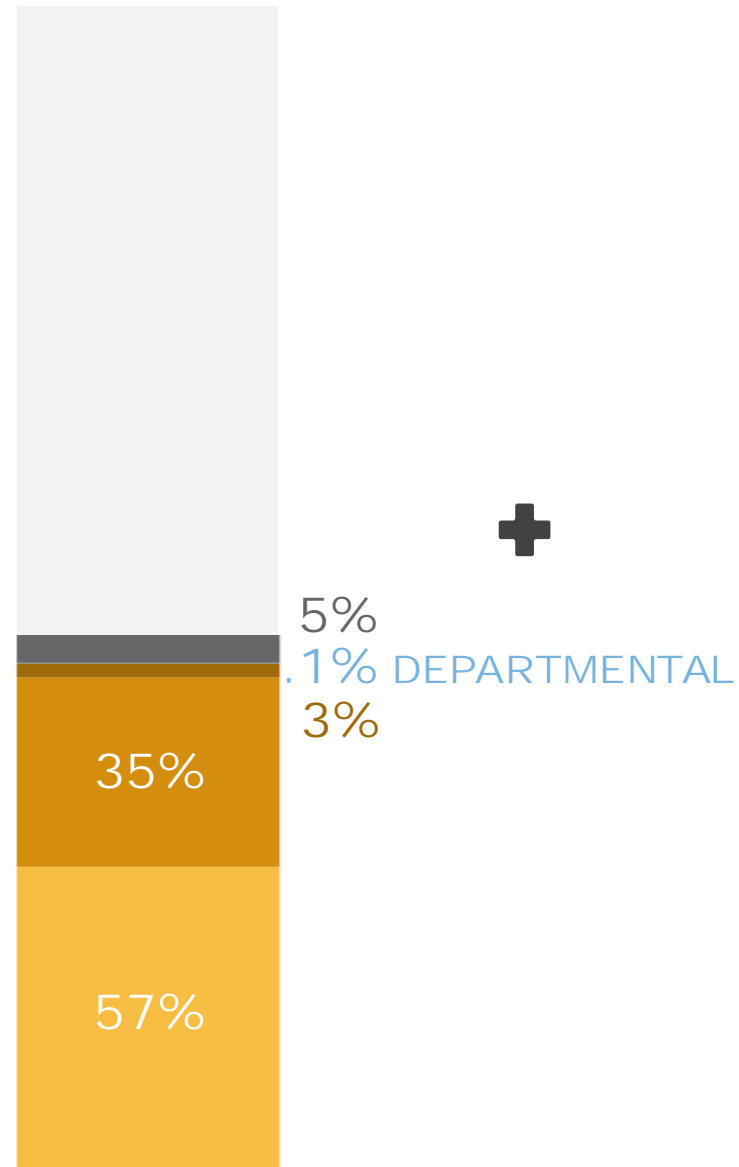


PRAIRIE SPRING SCIENCE CENTER IN PHASES – SPACE TYPES

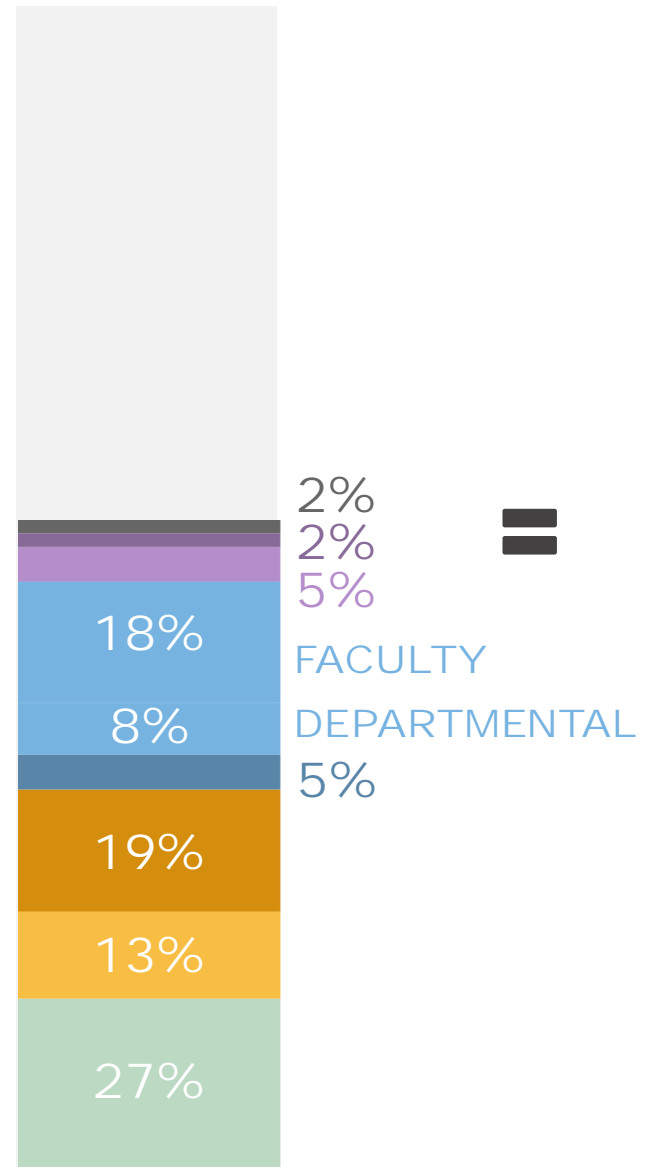
2021 UPDATE

- BUILDING SUPPORT
- SHARED – COLLABORATION
- STUDENT – COLLABORATION
- OFFICE – FACULTY
- OFFICE – DEPARTMENTAL
- OFFICE – COLLABORATION
- CORE LAB
- RESEARCH LABS
- CLASS LABS
- CLASSROOMS

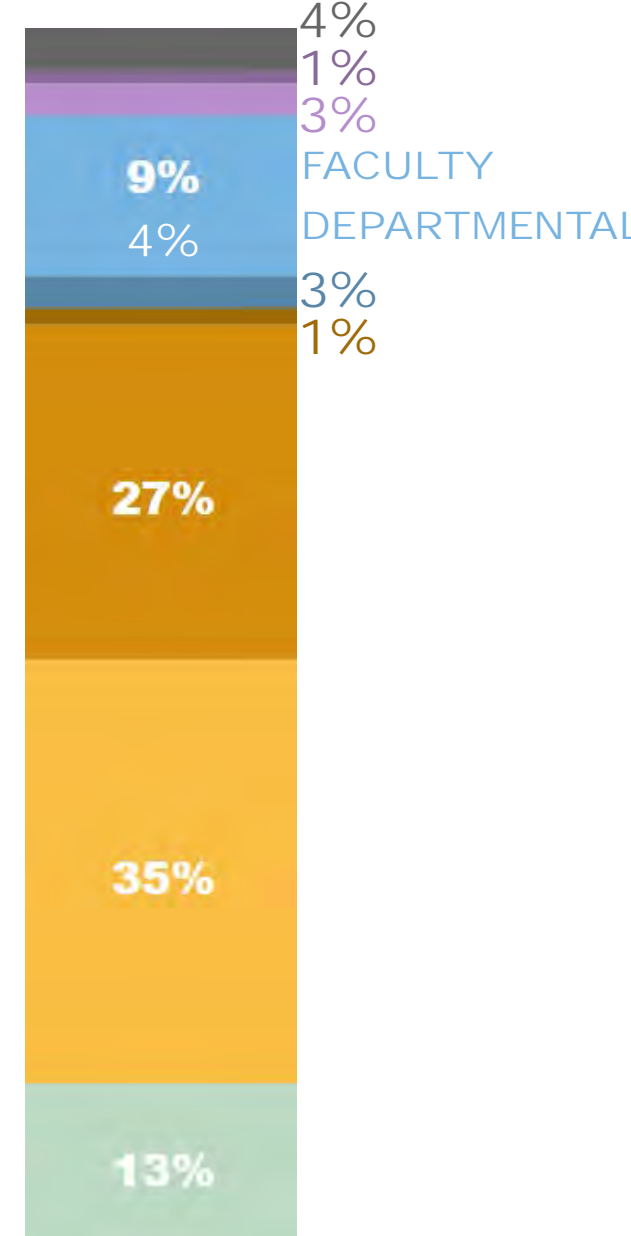
PHASE 1—“PLATFORM”
109,056 ASF



PHASE 2—“COMMUNITY”
104,484 ASF



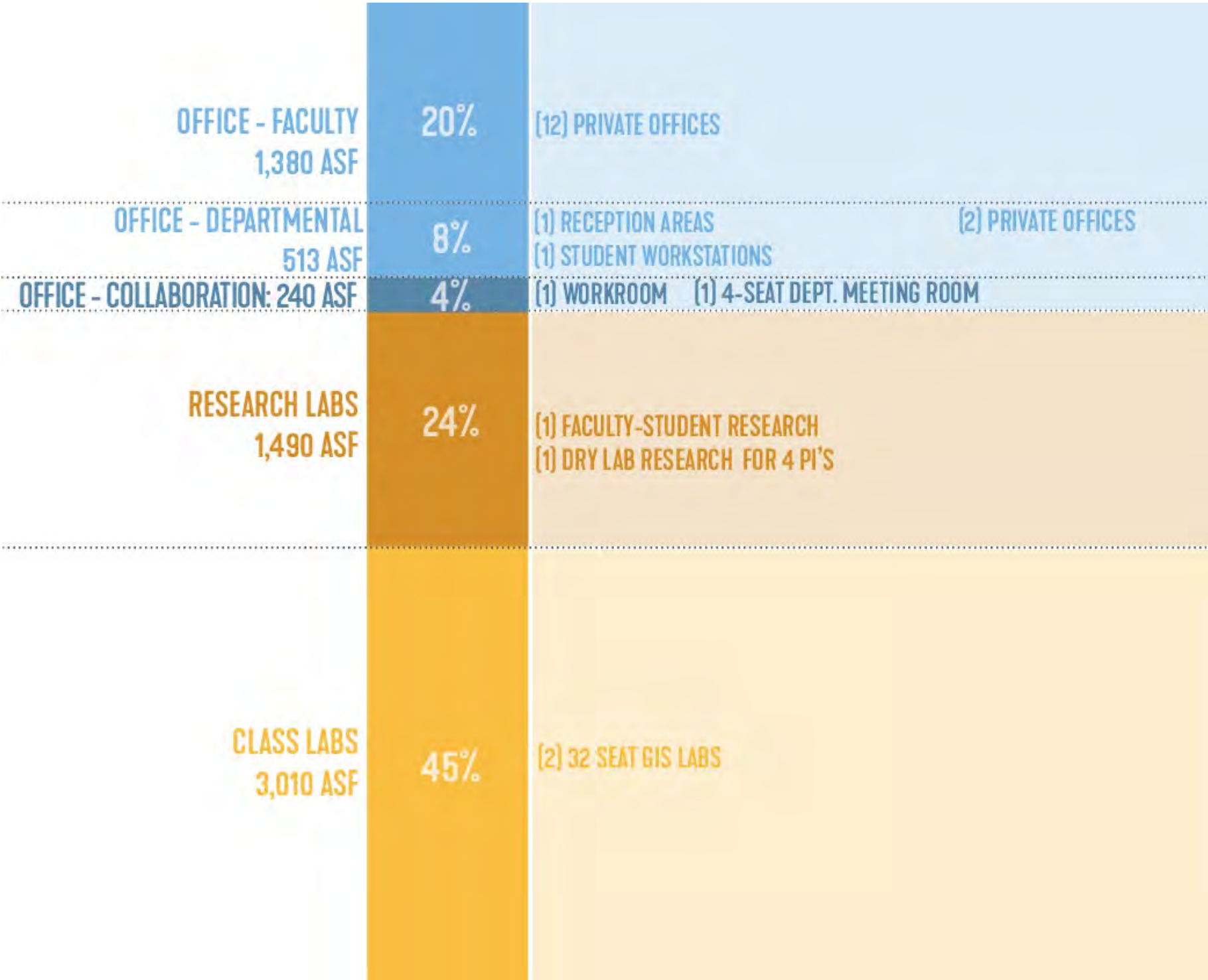
“THE PROMISE”
211,124 ASF



PROGRAM OVERVIEW

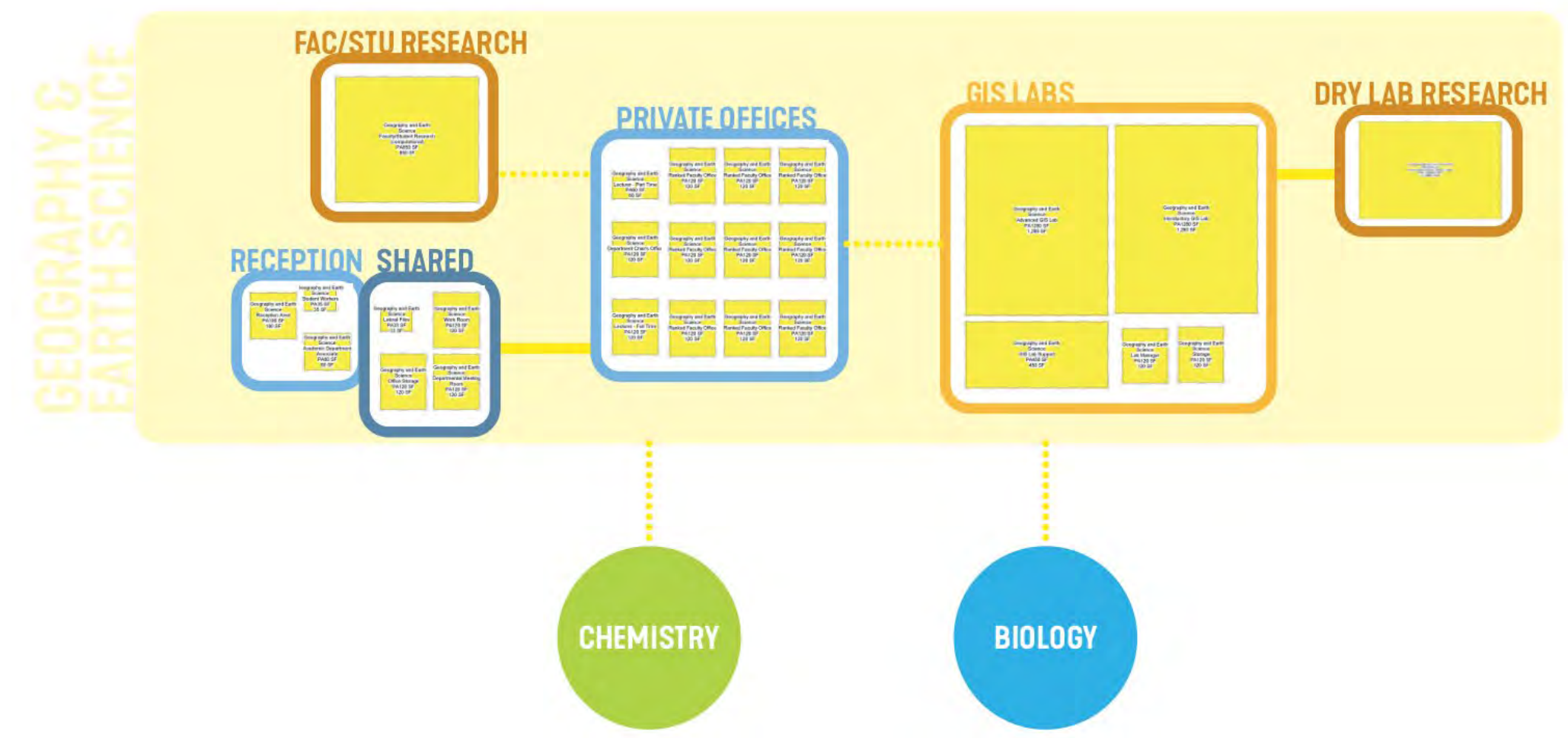
GEOGRAPHY & EARTH SCIENCE

- Added Departmental Meeting Room (+120 ASF)
- Added Dry Lab Research for 4 PI's (+640 ASF)
- Added GIS Lab Support Space (+450 ASF)
- Resizing to match module (+306)
- Student Workstations Enlarged (+25)
- Delta = +1,541 ASF



ADJACENCIES

GEOGRAPHY & EARTH SCIENCE



PROGRAM OVERVIEW

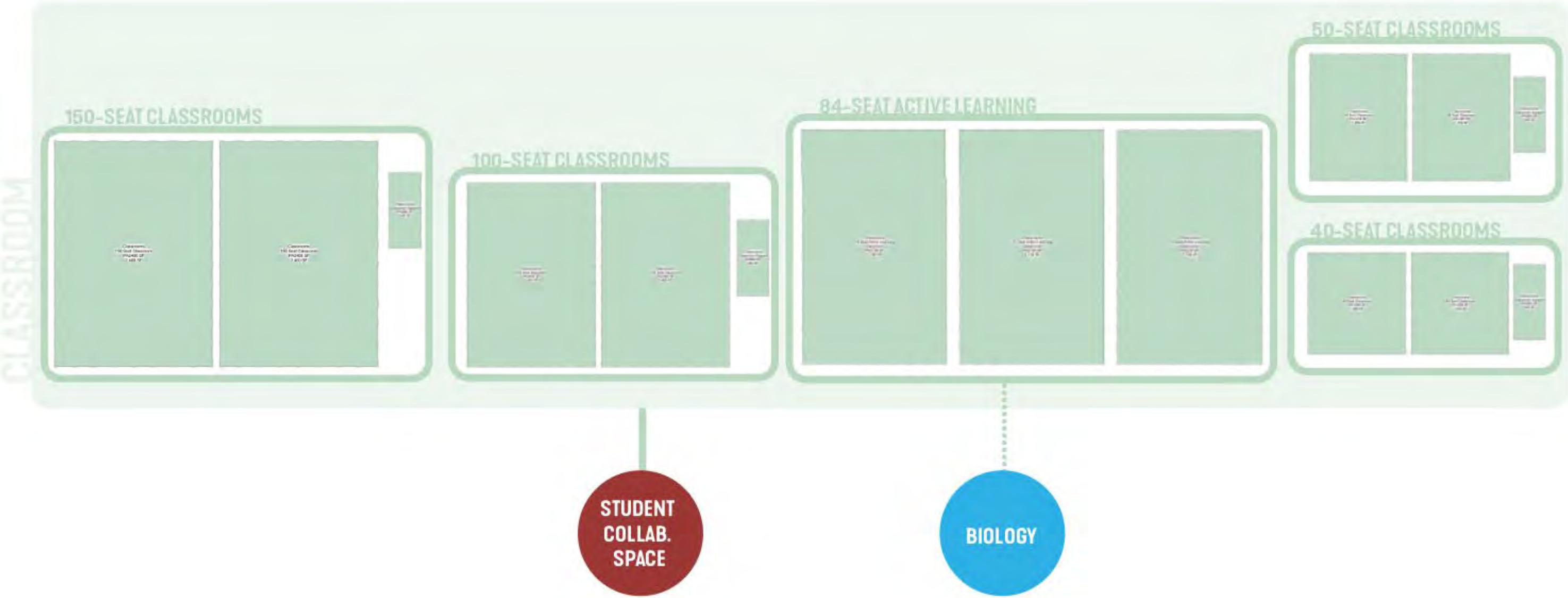
CLASSROOMS

- Increased 72-seat Active Learning to 84-seat (+456 ASF)
- Added (2) 84-seat Active Learning (+6,384 ASF)
- Increased 80-seat classrooms to 100-seat (+960 ASF)
- Changed 150 seat fixed theater style classroom to fixed tables and moveable chairs (+2,700 ASF)
- Delta = +10,500 ASF



ADJACENCIES

CLASSROOMS



PROGRAM OVERVIEW

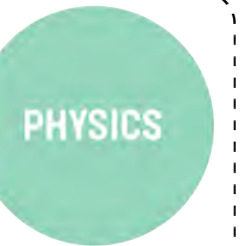
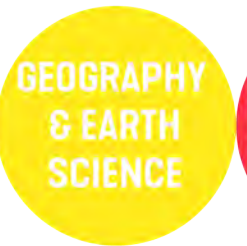
MISC. INSTRUCTIONAL SUPPORT

- Recategorized Student Organization Space (+0 ASF)
- Recategorized Faculty Resource Centers (+0 ASF)
- Renamed Maker Space to CS Engineering Lab (+0 ASF)
- Resizing to match module (+196 ASF)
- Removed (1) extra Science Ed Support Space (-640 ASF)
- Enlarged Science Ed Lab (+250)
- Delta = -194 ASF



ADJACENCIES

MISC. INSTRUCTIONAL
& SUPPORT



MISC. INSTRUCT. & SUPP.

FACULTY COLLAB.



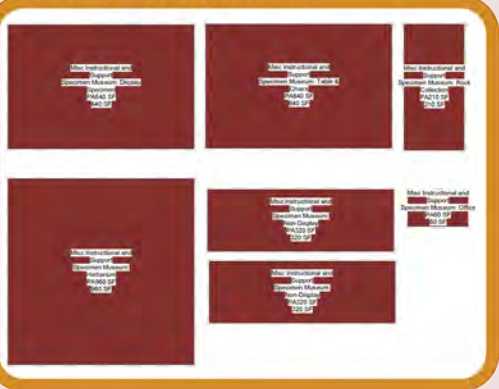
VENDING/SEATING



STUDENT COLLAB.



SPECIMEN MUSEUM



TESTING



SCIENCE ED



CS ENGINEERING LAB



STU. ORG.



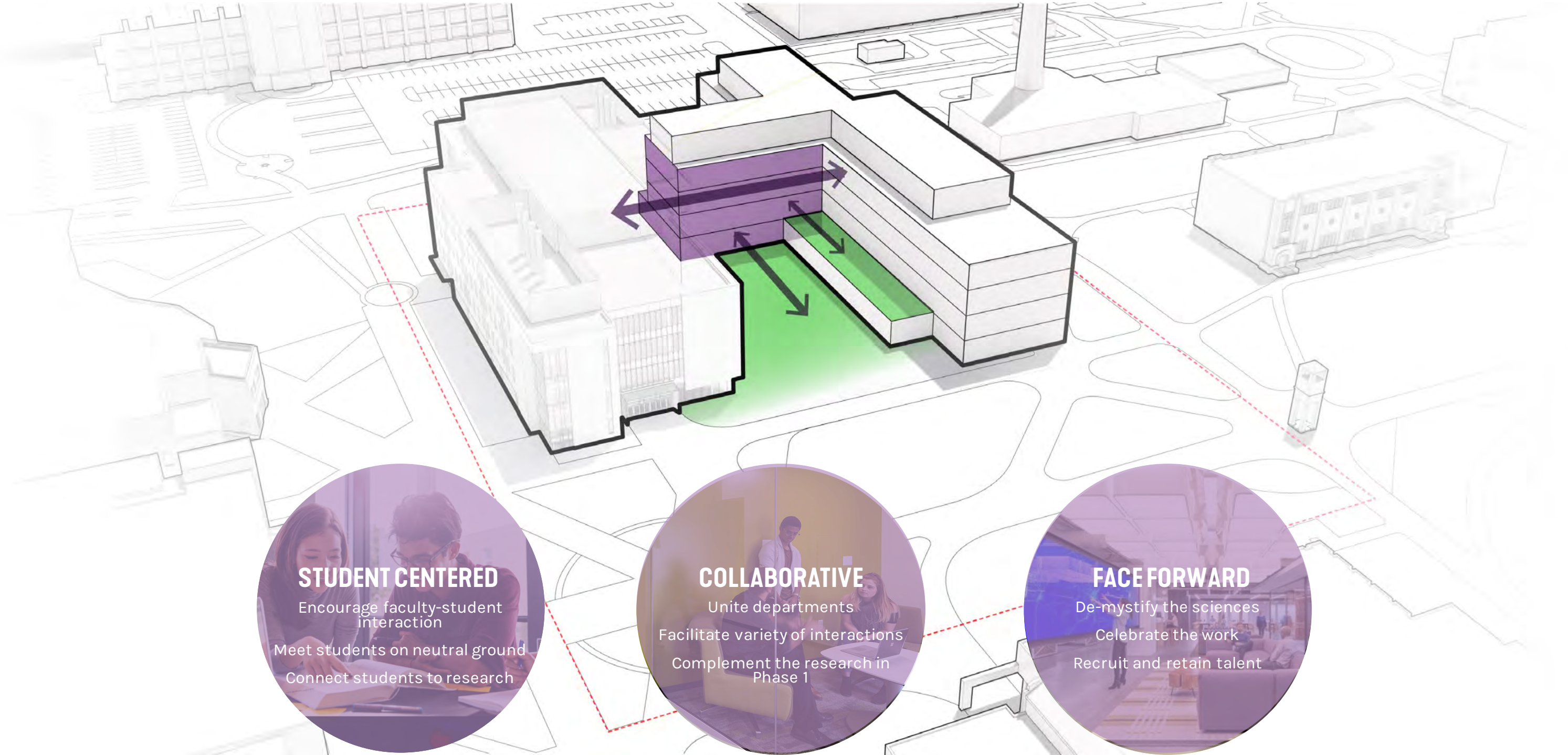
CYBER CAFE



PLANNING OPPORTUNITIES

- THE LINK
- DEPARTMENTAL SPACE ORGANIZATION

THE LINK



THE LINK

WHAT VALUE DOES THE LINK BETWEEN PHASE 1 AND 2 PROVIDE?

LINKS RESEARCH LABS WITH
STUDENTS

DAYLIGHT AND REPRIEVE
FROM ENCLOSED LAB

SCIENCE ON DISPLAY

INCLUSIVE DESIGN

INFORMAL, NEUTRAL, &
VARIED GATHERING SPACE

THE HEART OF THE BUILDING =
STUDENT-CENTRIC

ACTIVATED WITH CLASSROOMS
AND COLLABORATIVE SPACE

DIRECT CONNECTION TO
COURTYARD AND ROOF
TERRACE

THE LINK



THE LINK

MEANINGFUL CONNECTION TO ROOF TERRACE



THE LINK

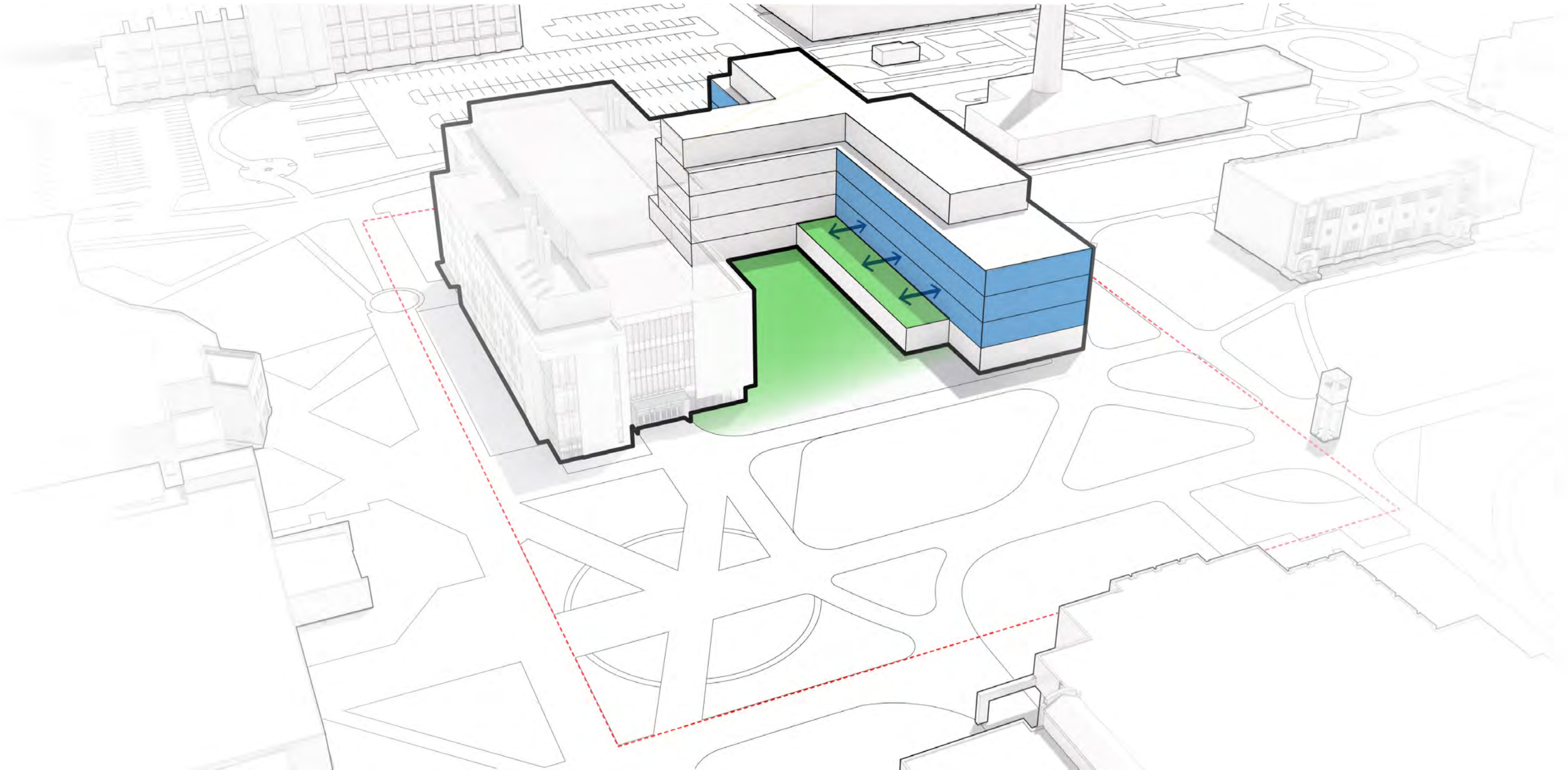


THE LINK

TREEHOUSE PORCH

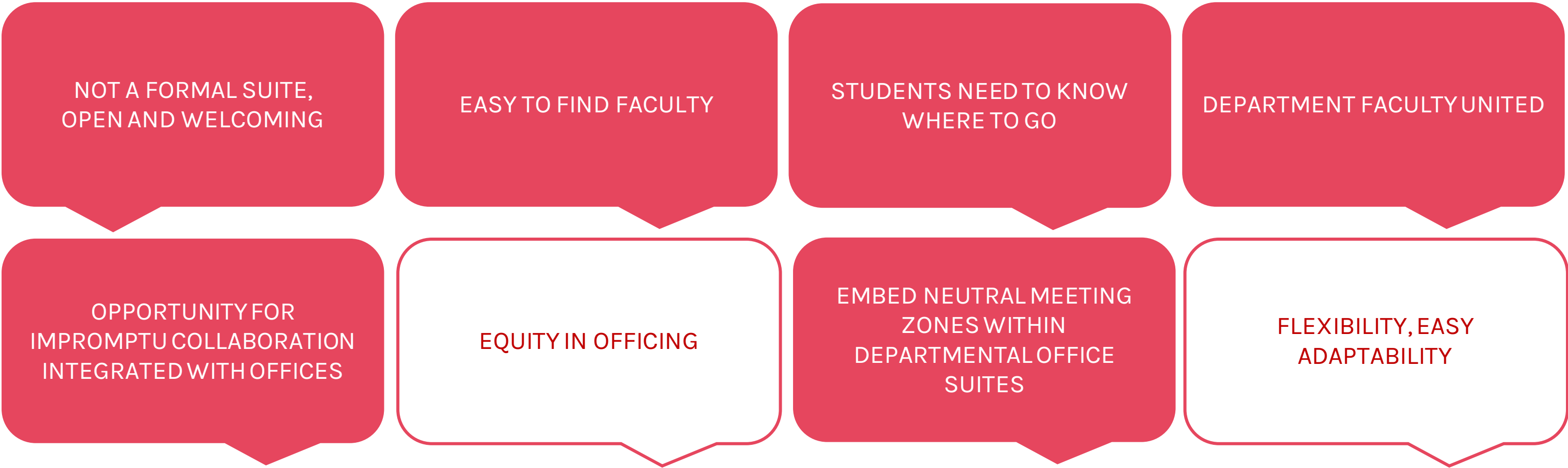


DEPARTMENTAL OFFICES



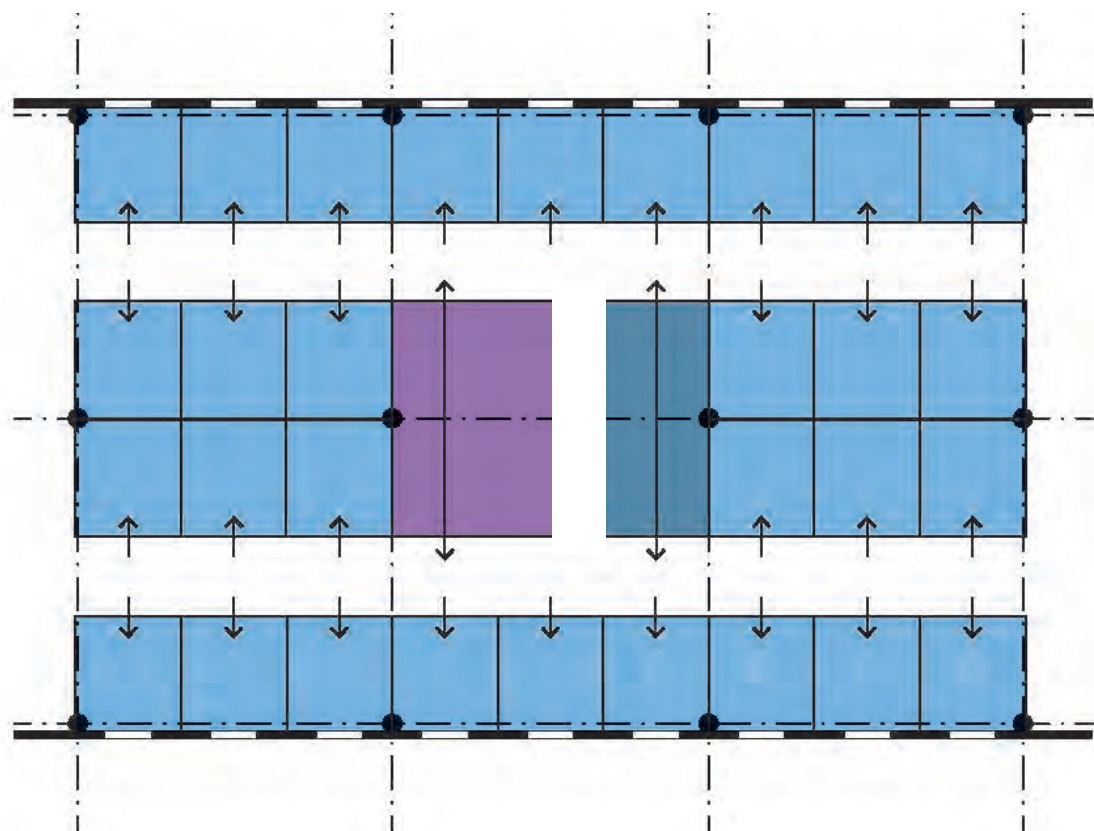
DEPARTMENTAL OFFICES

HOW DO YOU ENVISION DEPARTMENTAL SPACE TO BE ORGANIZED?

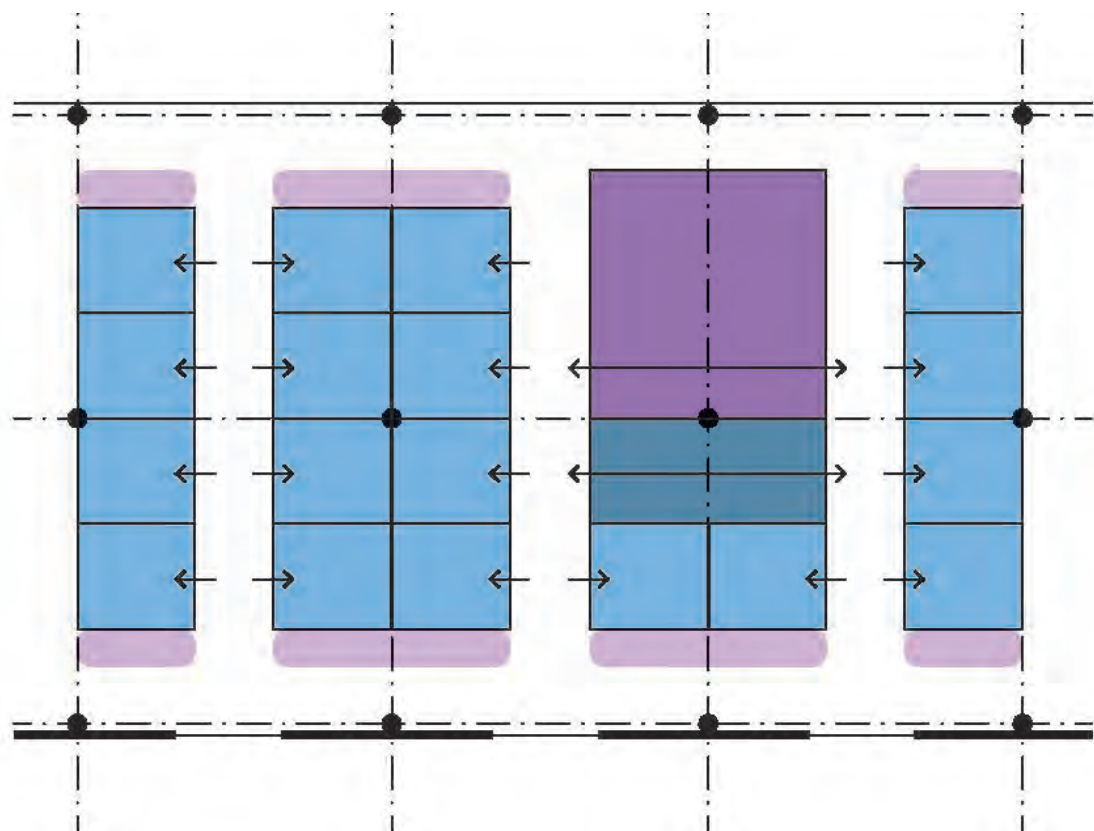


OFFICE STRATEGY

ORGANIZATIONAL MODELS



OPTION 1
(AS DEPICTED IN 10% CONCEPT REPORT)



OPTION 2

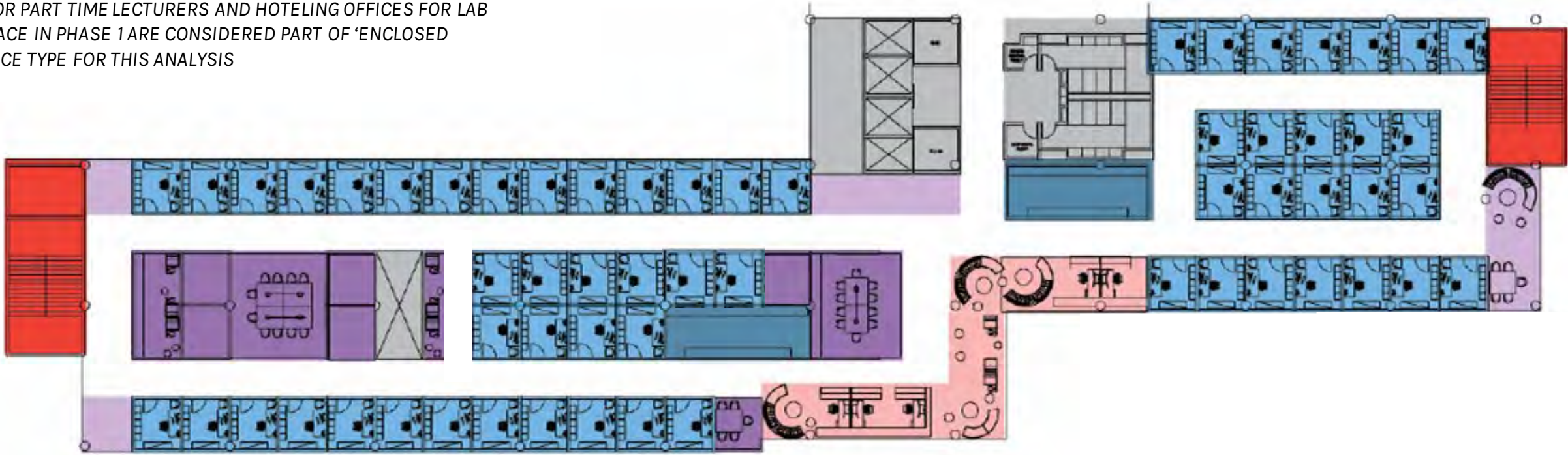
- PRIVATE OFFICE
- OFFICE SUPPORT - WORKROOMS / STORAGE / ETC.
- ENCLOSED COLLABORATIVE - CONFERENCE / FACULTY RESOURCE / ETC.
- OPEN COLLABORATIVE - WRITABLE WALL HUDDLE / NEUTRAL MEETING

OFFICE STRATEGY

OPTION 1

60 PRIVATE OFFICES PER FLOOR

*SHARED OFFICES FOR PART TIME LECTURERS AND HOTELING OFFICES FOR LAB MANAGERS WITH SPACE IN PHASE 1 ARE CONSIDERED PART OF 'ENCLOSED COLLABORATIVE' SPACE TYPE FOR THIS ANALYSIS



- PRIVATE OFFICE
- OFFICE SUPPORT
WORKROOMS / STORAGE / ETC.
- ENCLOSED COLLABORATIVE
CONFERENCE / FACULTY RESOURCE / ETC.
- OPEN COLLABORATIVE
WRITABLE WALL HUDDLE / NEUTRAL MEETING
- RECEPTION
- STAIRS
- BUILDING SUPPORT
TOILETS, MECH SHAFTS, ELEC/IT/AV ROOMS, ETC.

INTERIOR EXPERIENCE

OPTION 1

*THIS RENDERING DOES NOT REPRESENT FINAL DESIGN. ALTERNATE OPTIONS FOR MEETING OFFICE GLAZING GUIDELINES WILL BE EXPLORED, INCLUDING BUT NOT LIMITED TO: SOLID DOOR PANEL WITH GLAZED SIDELIGHTS ONLY, TRANSOM WINDOWS, ALTERNATE TRANSLUCENT GLAZING PATTERNS, AND GLAZING THAT DOES NOT EXTEND TO THE FLOOR.

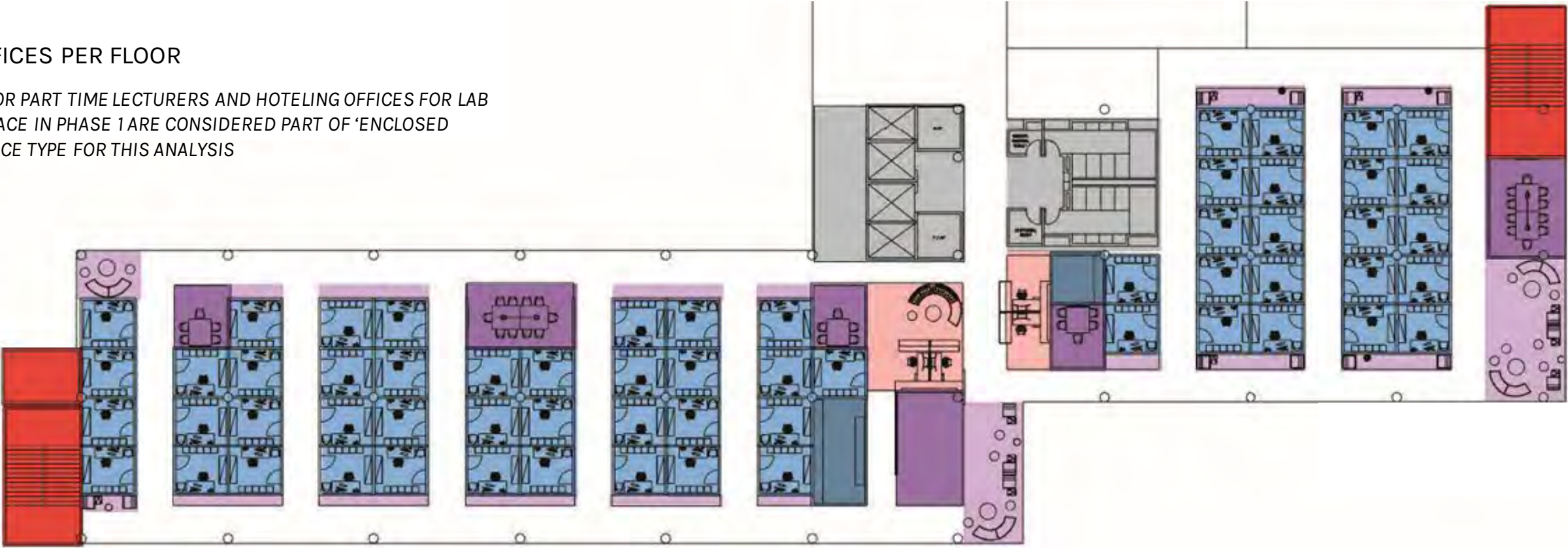


OFFICE STRATEGY

OPTION 2

60 PRIVATE OFFICES PER FLOOR

*SHARED OFFICES FOR PART TIME LECTURERS AND HOTELING OFFICES FOR LAB MANAGERS WITH SPACE IN PHASE 1 ARE CONSIDERED PART OF 'ENCLOSED COLLABORATIVE' SPACE TYPE FOR THIS ANALYSIS



- PRIVATE OFFICE
- OFFICE SUPPORT
WORKROOMS / STORAGE / ETC.
- ENCLOSED COLLABORATIVE
CONFERENCE / FACULTY RESOURCE / ETC.
- OPEN COLLABORATIVE
WRITABLE WALL HUDDLE / NEUTRAL MEETING
- RECEPTION
- STAIRS
- BUILDING SUPPORT
TOILETS, MECH SHAFTS, ELEC/IT/AV ROOMS, ETC.

INTERIOR EXPERIENCE

OPTION 2

*THIS RENDERING DOES NOT REPRESENT FINAL DESIGN. ALTERNATE OPTIONS FOR MEETING OFFICE GLAZING GUIDELINES WILL BE EXPLORED, INCLUDING BUT NOT LIMITED TO: SOLID DOOR PANEL WITH GLAZED SIDELIGHT ONLY, TRANSOM WINDOWS, ALTERNATE TRANSLUCENT GLAZING PATTERNS, AND GLAZING THAT DOES NOT EXTEND TO THE FLOOR. ALTERNATES TO THE WRITABLE SURFACE SHOWN WILL ALSO BE EXPLORED INCLUDING WRITABLE GLASS AND WHITEBOARDS.



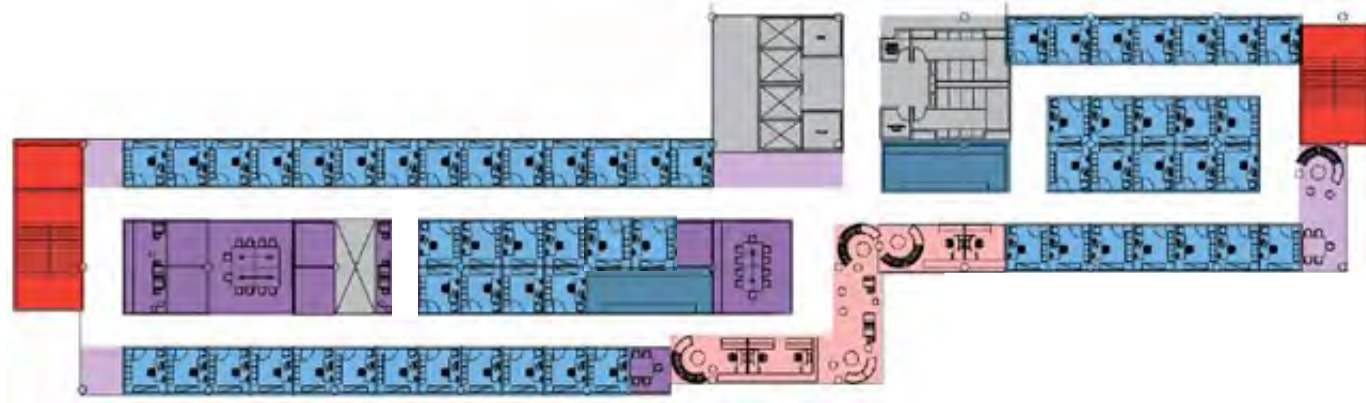
OPTION 2

*THIS RENDERING DOES NOT REPRESENT FINAL DESIGN. ALTERNATE OPTIONS FOR MEETING OFFICE GLAZING GUIDELINES WILL BE EXPLORED, INCLUDING BUT NOT LIMITED TO: SOLID DOOR PANEL WITH GLAZED SIDELIGHT ONLY, TRANSOM WINDOWS, ALTERNATE TRANSLUCENT GLAZING PATTERNS, AND GLAZING THAT DOES NOT EXTEND TO THE FLOOR. ALTERNATES TO THE WRITABLE SURFACE SHOWN WILL ALSO BE EXPLORED INCLUDING WRITABLE GLASS AND WHITEBOARDS.



OFFICE STRATEGY

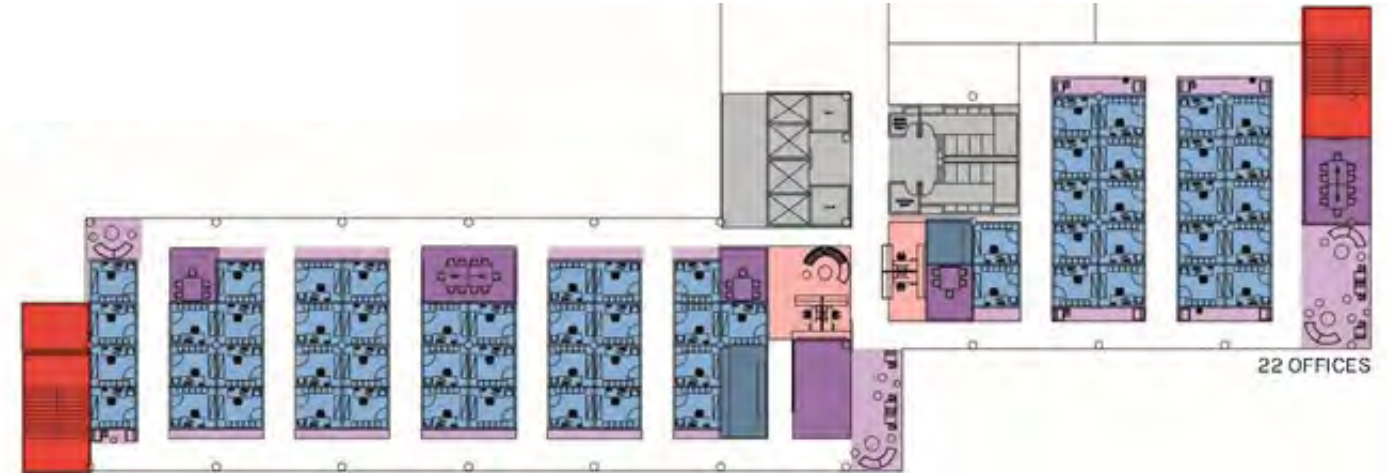
PROS AND CONS



OPTION 1

MOST EFFICIENT
STATUS QUO

1/3 OF OFFICES HAVE LIMITED ACCESS TO DAYLIGHT & NO VIEW TO OUTSIDE
LIMITED FLEXIBILITY OVER THE LONG TERM
LIMITED ACCESS TO COLLABORATION ZONES
LESS PRIVACY (ALL OFFICES ARE ON A PRIMARY CORRIDOR)
INTIMIDATING



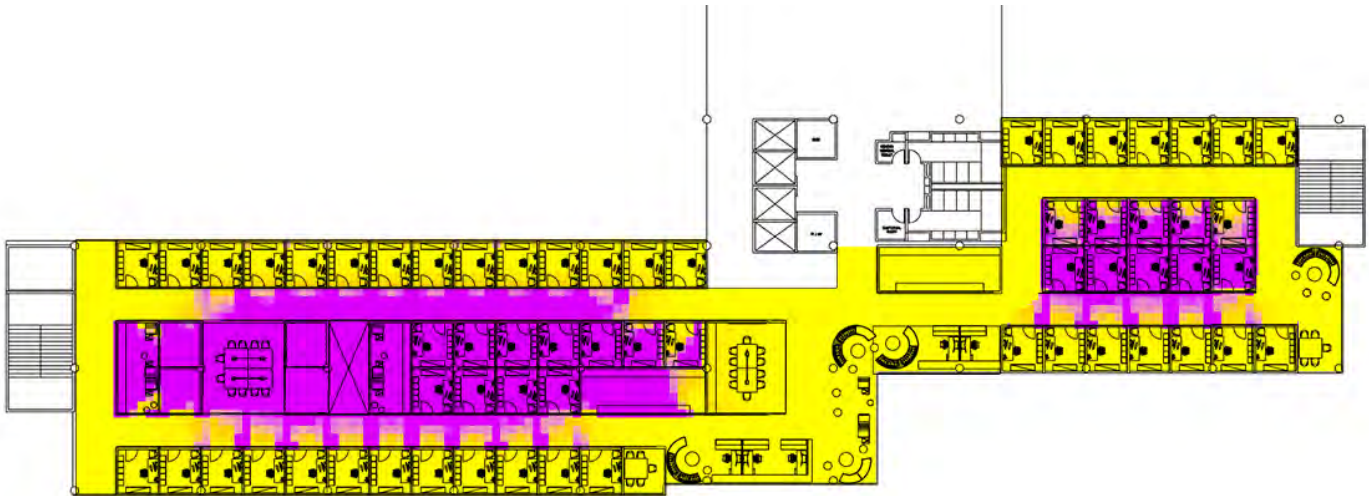
OPTION 2

ALL OFFICES ARE EQUALLY DESIREABLE
DAYLIGHT PENETRATES TO THE CENTER OF THE FLOOR
VIEWS OUTSIDE ARE AVAILABLE TO ALL VIA CORRIDORS & COLLABORATION AREAS
MORE OPEN AND WELCOMING FOR STUDENTS
NEUTRAL MEETING AND COLLABORATIVE ZONES DISTRIBUTED THROUGHOUT
FLEXIBLE MODULE CAN BE ADAPTED OVER TIME
INCREASED PRIVACY (OFFICES ARE CLUSTERED ON CROSS CORRIDORS)

LESS EFFICIENT
CULTURAL SHIFT

DAYLIGHTING ANALYSIS

*DAYLIGHT STUDIES BASED UPON GLAZING EXTENTS SHOWN IN RENDERINGS IN THIS DOCUMENT TO PROVIDE A BASELINE POINT OF COMPARISON BETWEEN DAYLIGHT PENETRATION IN OPTION 1 AND OPTION 2.



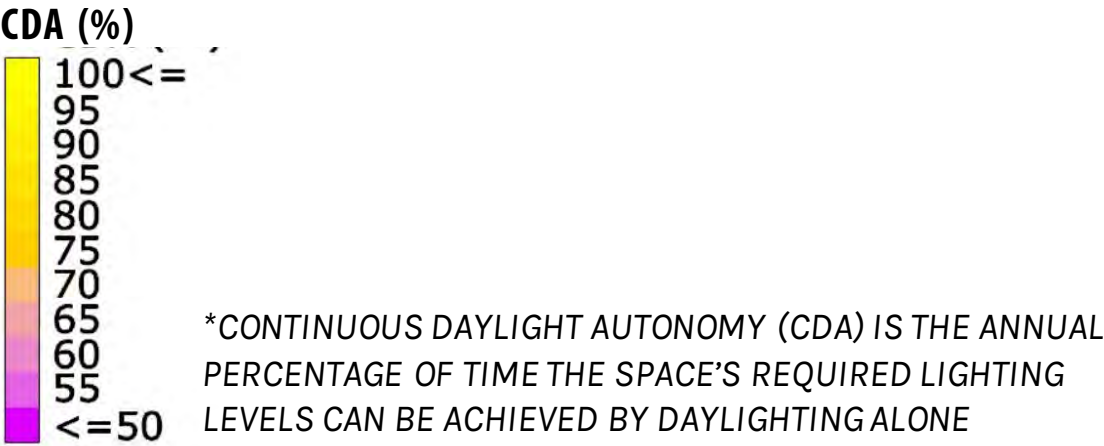
OPTION 1

INTERNAL OFFICES AND CORRIDORS HAVE LIMITED ACCESS TO DAYLIGHT



OPTION 2

CORRIDORS AND COLLABORATIVE ZONES HAVE FULL EXPOSURE TO DAYLIGHT



OFFICE STRATEGY

INTERIOR EXPERIENCE

*THESE RENDERINGS DO NOT REPRESENT FINAL DESIGN. ALTERNATE OPTIONS FOR MEETING OFFICE GLAZING GUIDELINES WILL BE EXPLORED, INCLUDING BUT NOT LIMITED TO: SOLID DOOR PANEL WITH GLAZED SIDELIGHT ONLY, TRANSOM WINDOWS, ALTERNATE TRANSLUCENT GLAZING PATTERNS, AND GLAZING THAT DOES NOT EXTEND TO THE FLOOR. ALTERNATES TO THE WRITABLE SURFACE SHOWN WILL ALSO BE EXPLORED INCLUDING WRITABLE GLASS AND WHITEBOARDS.



OPTION 1



OPTION 2

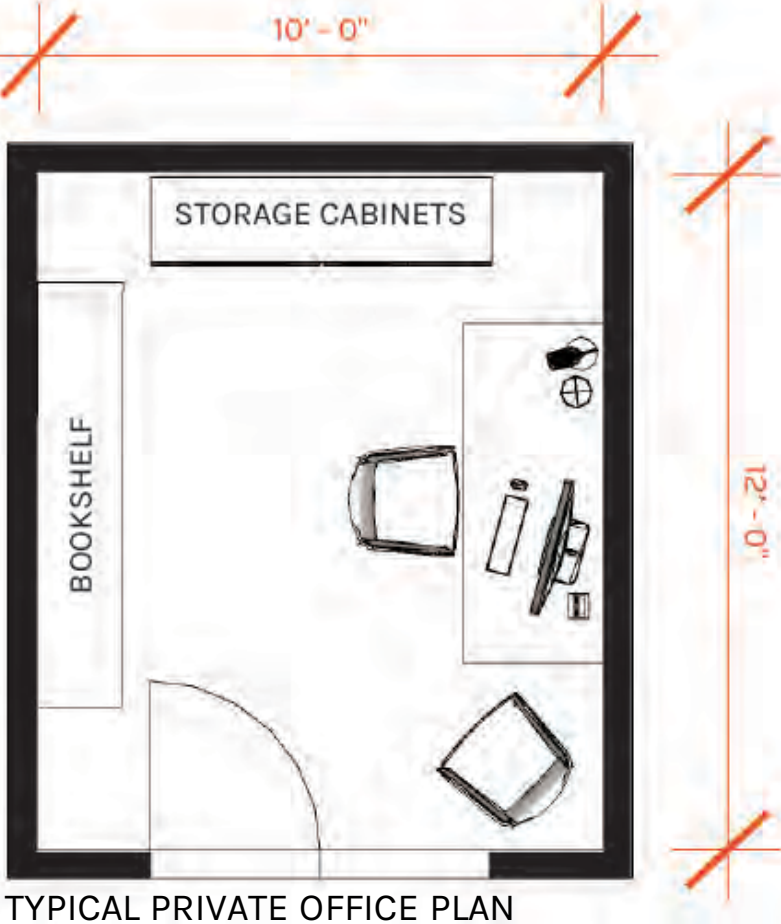
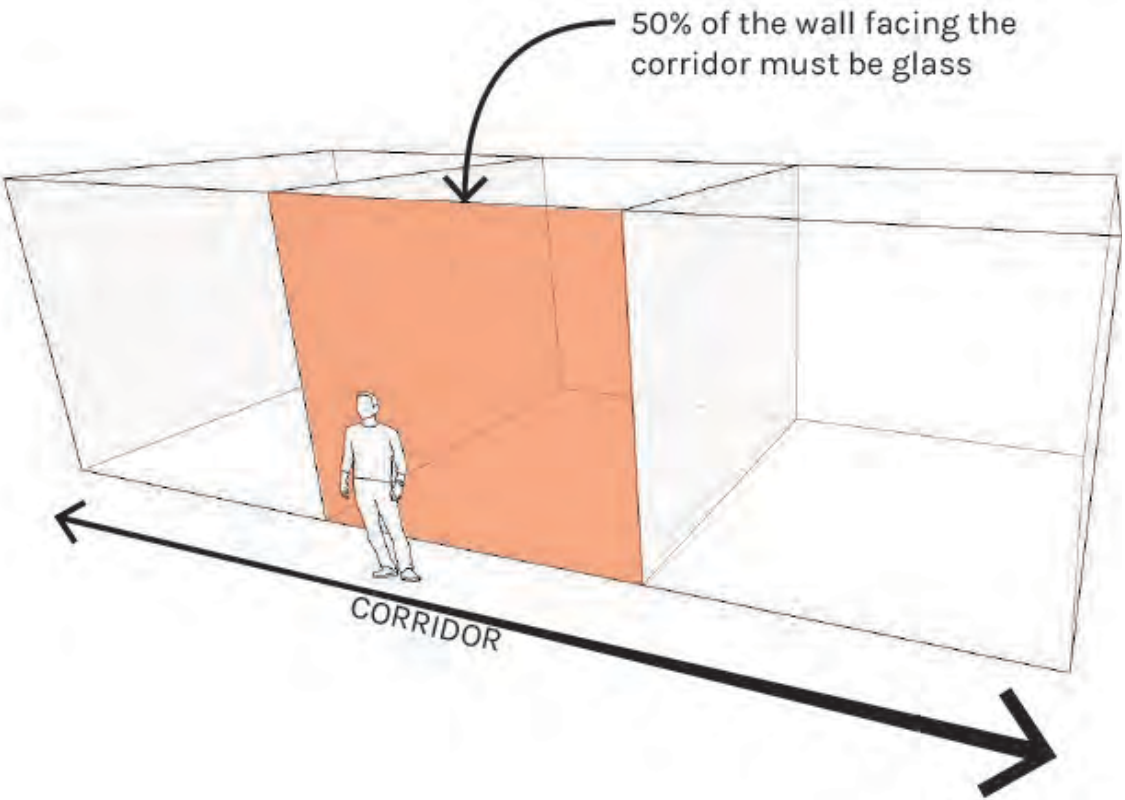
TYPICAL PRIVATE OFFICE

REQUIREMENTS

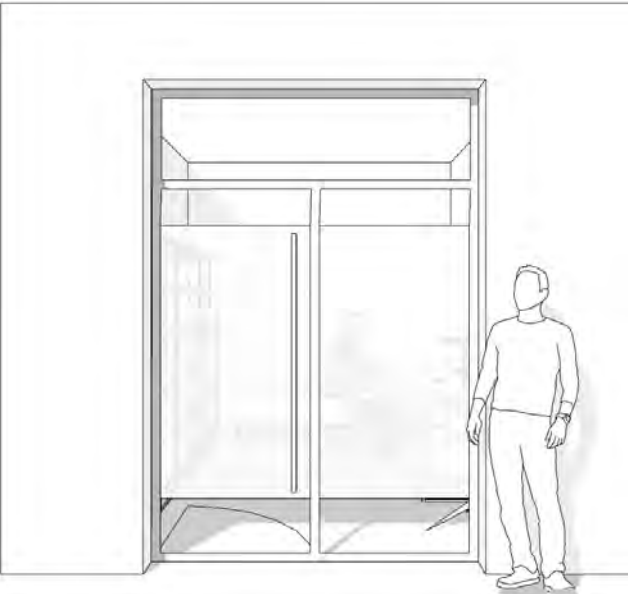
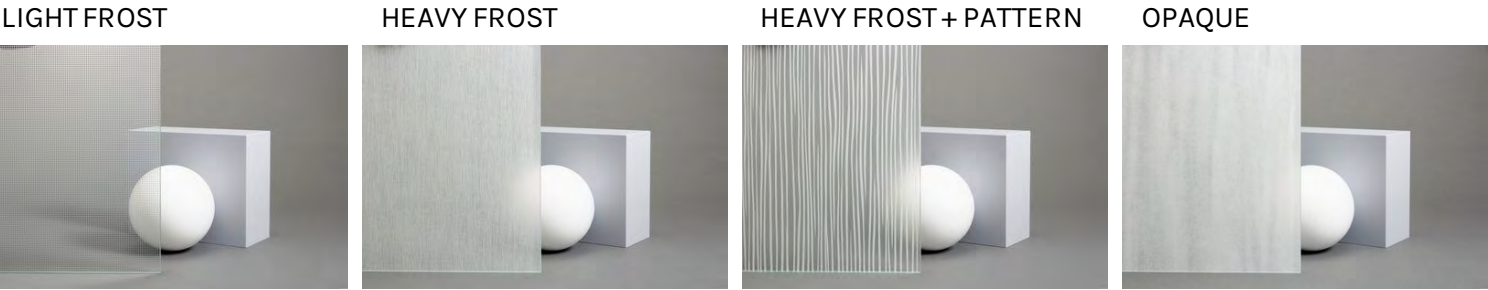
TO PROMOTE PASSIVE ILLUMINATION VIA DAYLIGHTING, THE NEW SUSTAINABILITY GUIDELINES REQUIRE ALL OFFICES **WITH A DEDICATED EXTERIOR WINDOW** TO BE 50% GLASS ON THE WALL FACING THE CORRIDOR.

THE GLASS CAN BE OBSCURED WITH FROST OR CERAMIC FRIT TO PROVIDE VISUAL PRIVACY WHILE STILL EMITTING DAYLIGHT. (EXAMPLES PROVIDED BELOW)

**OFFICE FURNITURE LAYOUT FOR REFERENCE ONLY*
**DOOR AND SIDE LIGHT DETAILS FOR REFERENCE ONLY*



EXAMPLES OF OBSCURE GLASS FOR REFERENCE:





STUDENT CENTERED

Encourage faculty-student interaction
Meet students on neutral ground
Connect students to research

COLLABORATIVE

Unite departments
Facilitate variety of interactions
Complement the research in Phase 1

FACE FORWARD

De-mystify the sciences
Celebrate the work
Recruit and retain talent

TECHNOLOGY

UW-LA CROSSE
EAGLES

