



PROGRAMMING - VIVARIUM

February 8, 2021

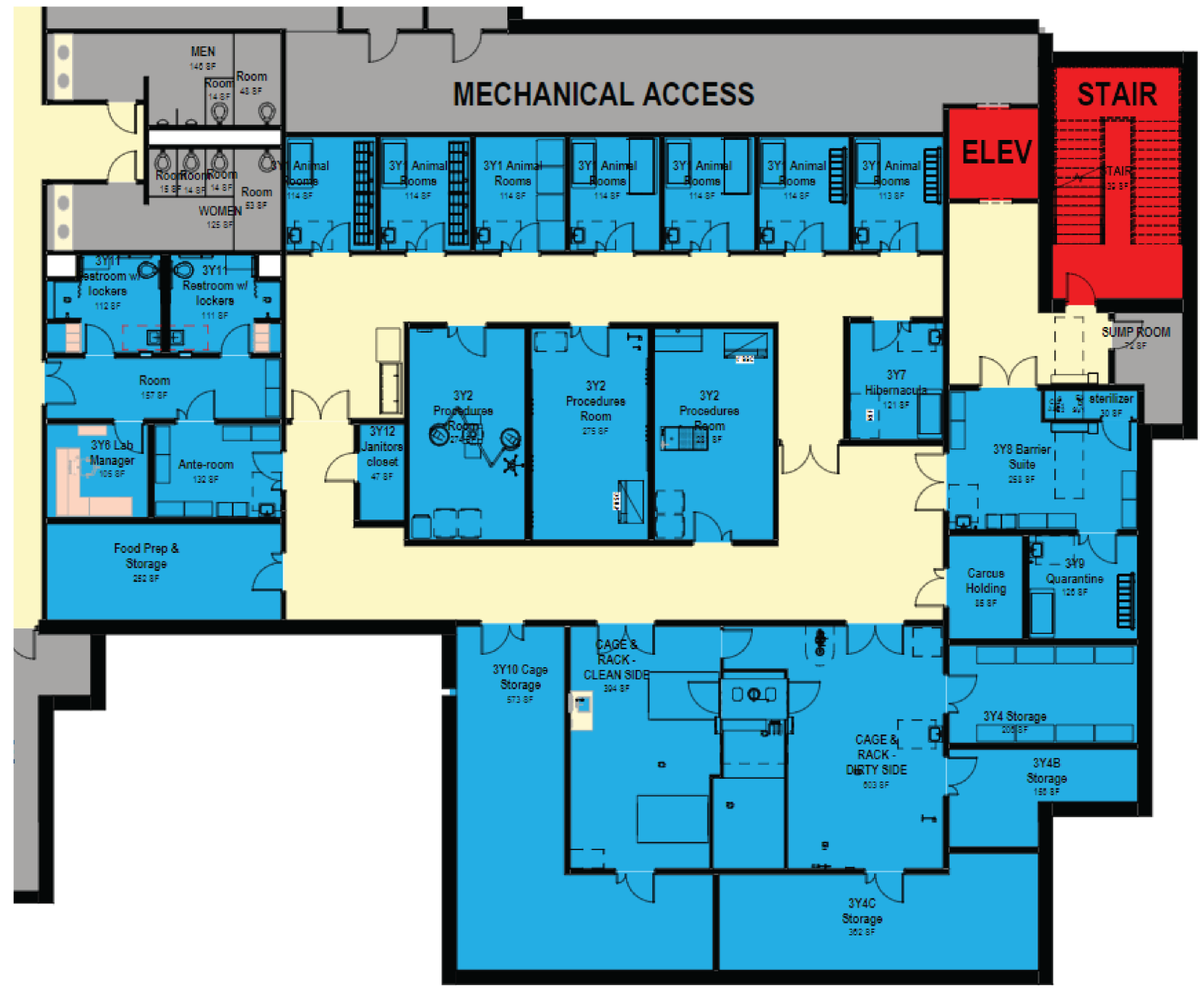
VIVARIUM PROGRAM

UNIT NO.	UNIT	ROOM NAME	NO. OF OCC.	ASF / OCC	ASF / SPACE	NO. OF SPACES	TOTAL AREA	NO. OF SPACES 2017	TOTAL AREA 2017	DELTA
3Y1.1-7	Biology	Animal Rooms	1	160	160	7	1,120	7	840	280
3Y10	Biology	Cage Storage	1	320	320	1	320	1	343	(23)
3Y11.1-2	Biology	Restroom w/Lockers and shower	1	120	120	2	240	2	554	(314)
3Y12	Biology	Janitors Closet	1	30	30	1	30	1	30	
3Y15	Biology	Food Prep & Storage	1	210	210	1	210	1	255	(45)
3Y16	Biology	Ante-Room	1	110	110	1	110	1	187	(77)
3Y2.1-3	Biology	Procedures Room	1	210	210	3	630	3	870	(240)
3Y3	Biology	Cage Wash - Clean	1	640	640	1	640	1	546	94
3Y4	Biology	Storage Cabinets	1	160	160	2	320	1	320	
3Y5	Biology	Cage Wash - Dirty	1	640	640	1	640	1	453	187
3Y6	Biology	Lab Manager	1	120	120	1	120	1	120	
3Y7	Biology	Hibernacula	1	160	160	1	160	1	120	40
3Y8	Biology	Barrier Suite	1	210	210	1	210	1	140	70
3Y9	Biology	Quarantine	1	160	160	1	160	1	110	50
							4,910		4,888	22
3Y13		Circulation	-	-	960	1	960	1	2,090	(1130)
3Y14		Mechanical	-	-	960	1	960	1	1,700	(740)
							1,920		3,790	(1,870)

VIVARIUM LAYOUT

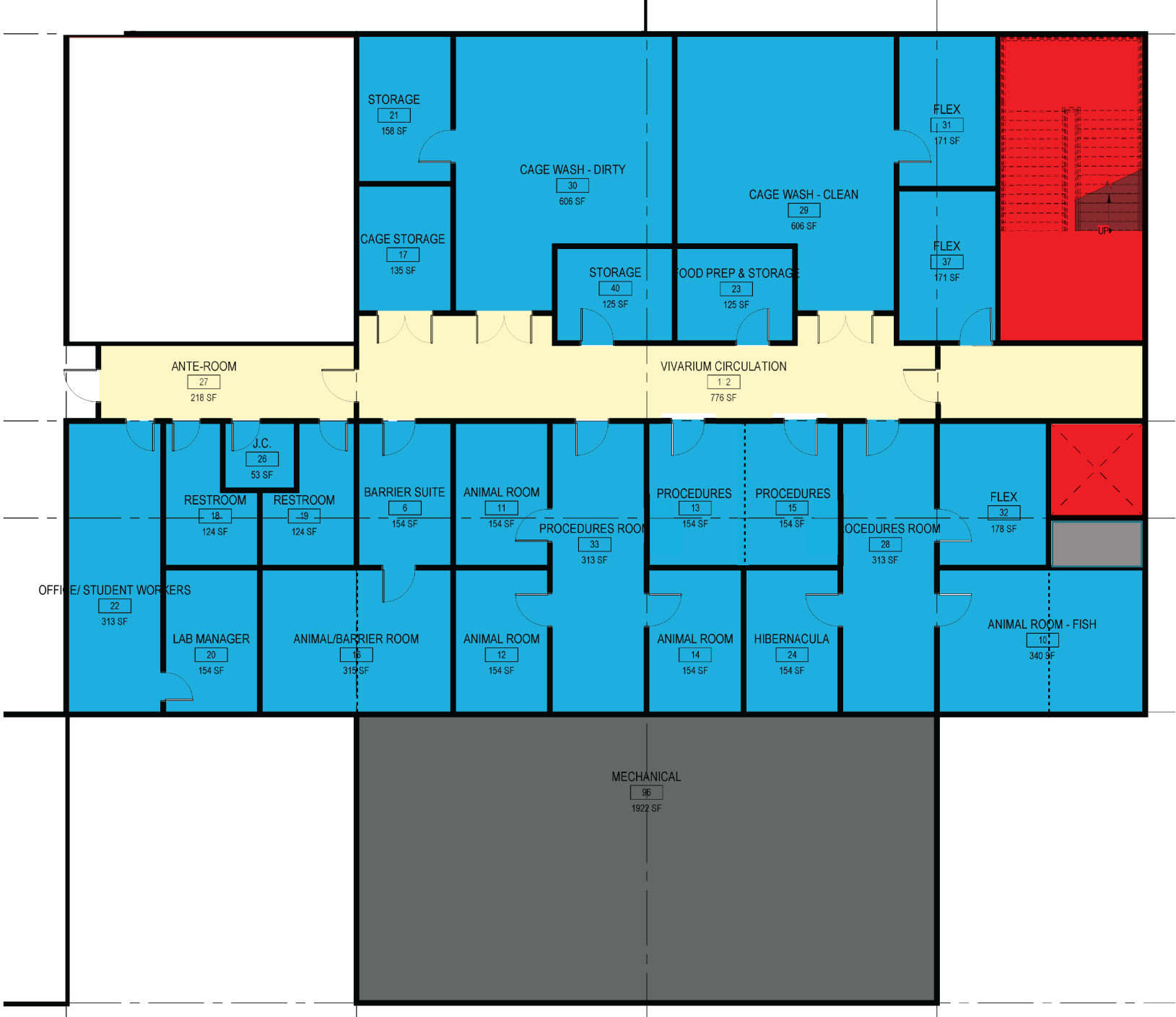
2017

- Consider rightsizing holding/procedure
- Move cagewash away from greenhouse
- Reproportion mechanical spaces - tight
- Create efficient circulation space



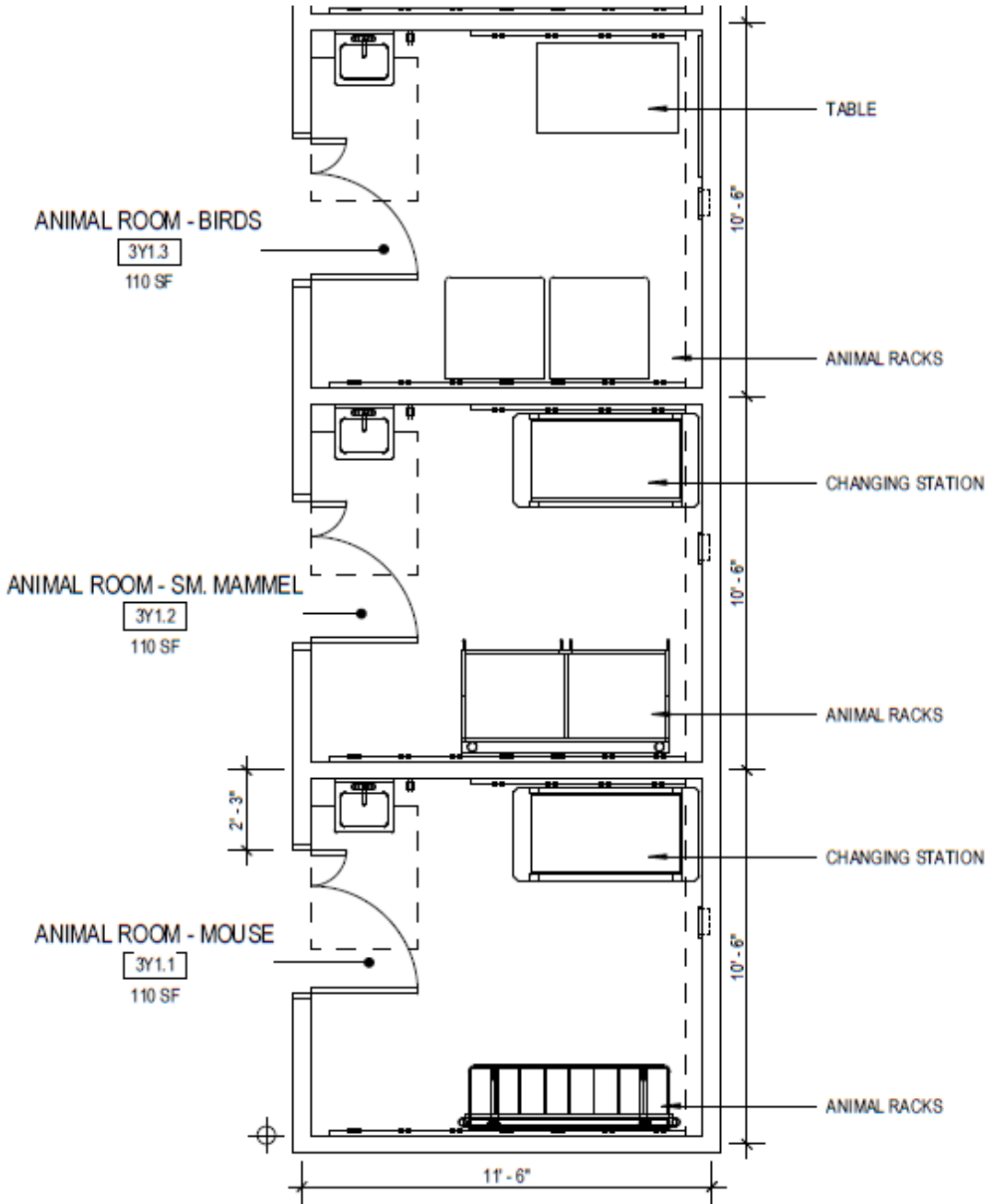
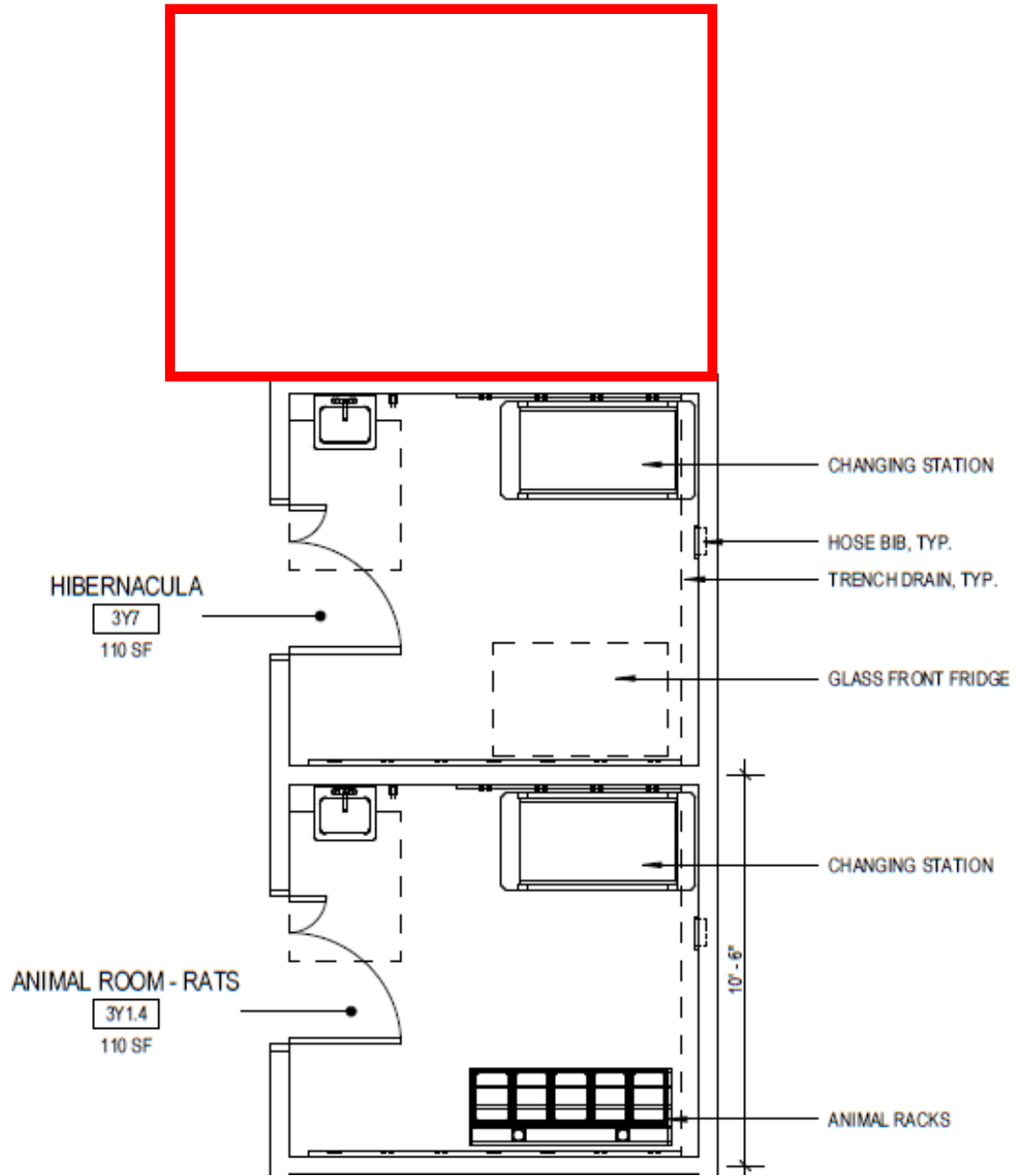
VIVARIUM LAYOUT – UPDATED CONCEPT

- Modular plan enhances flexibility
- Holding rooms increased in size
- Procedure rooms contiguous with suites
- Cagewash is moved North of corridor
- Mech consolidated under greenhouse
- Single uni-directional corridor concept



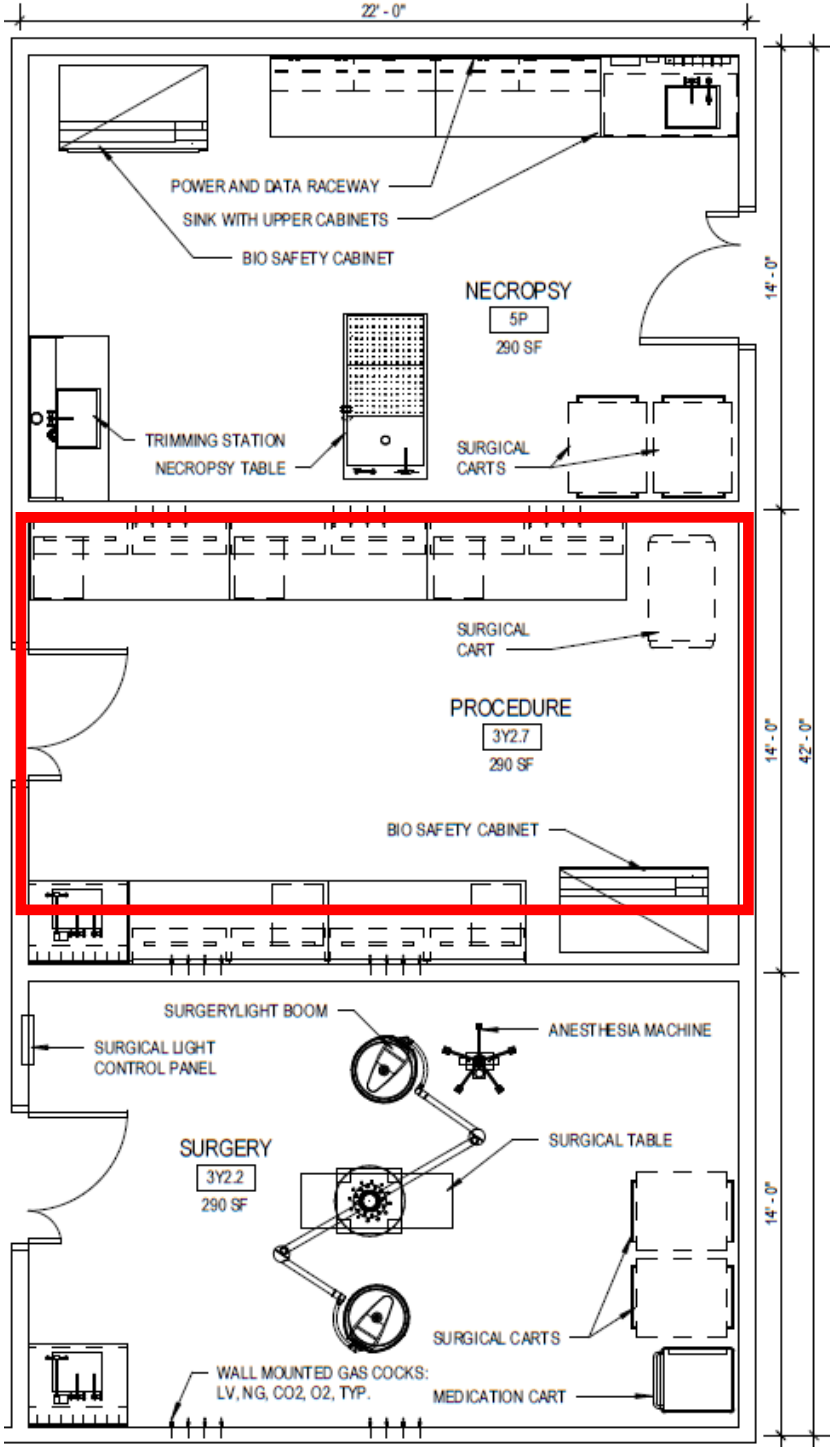
VIVARIUM LAYOUT – 2017 GUIDEPLATES

ANIMAL ROOMS



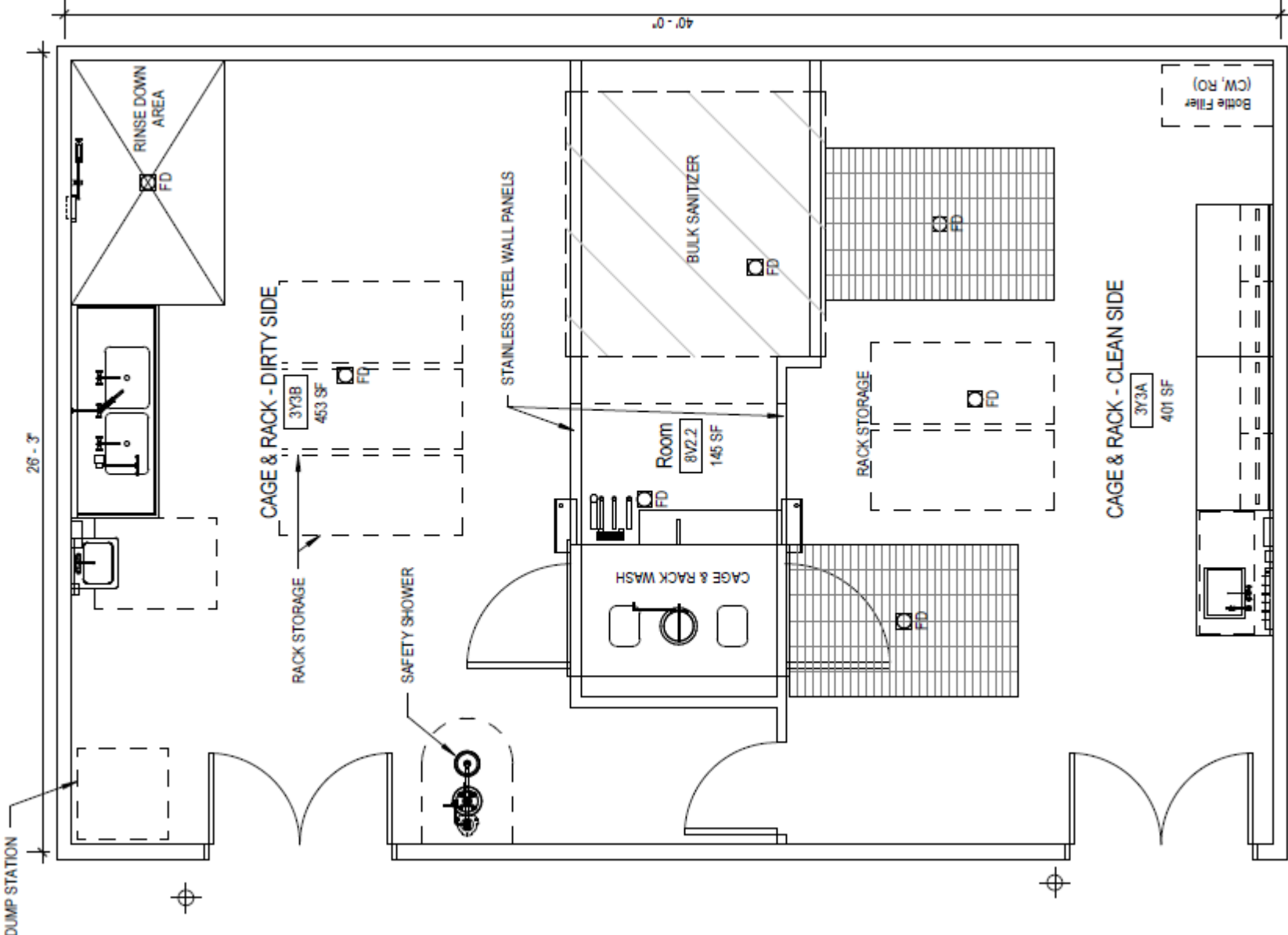
VIVARIUM LAYOUT – 2017 GUIDEPLATES

PROCEDURE ROOMS



VIVARIUM LAYOUT – 2017 GUIDEPLATES

CAGE WASH

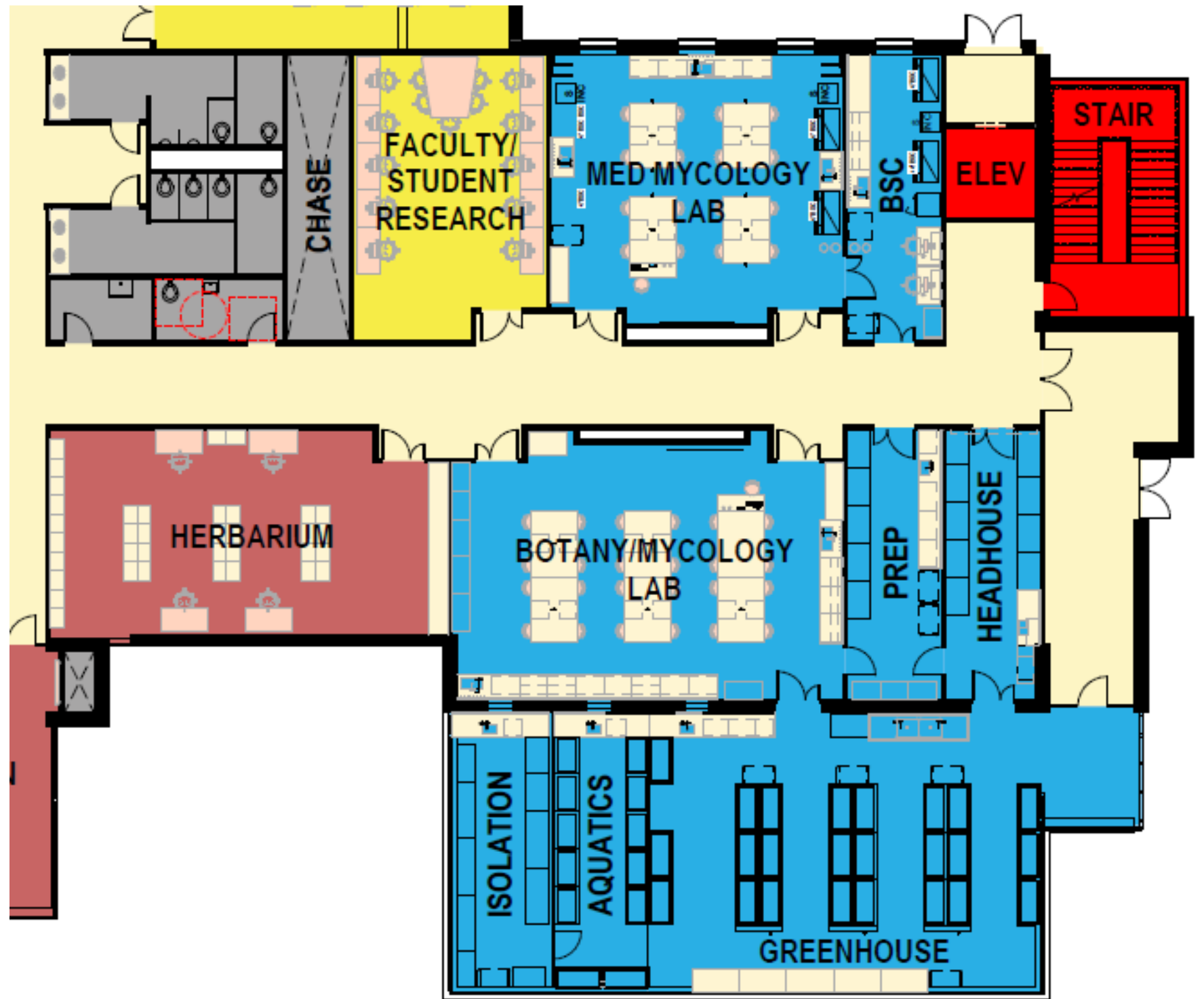


GREENHOUSE PROGRAM

UNIT NO.	UNIT	ROOM NAME	NO. OF OCC.	ASF / OCC	ASF / SPACE	NO. OF SPACES	TOTAL AREA	NO. OF SPACES 2017	TOTAL AREA 2017	DELTA
3AA1	Biology	Greenhouse	1	1,280	1,280	1	1,280	1	1,280	0.00
3AA2	Biology	Headhouse	1	320	320	1	320	1	320	0.00
3AA3	Biology	Aquatics Space	1	210	210	1	210	1	160	50.00
3AA4	Biology	Isolation Space	1	320	320	1	320	1	320	0.00
							2,130		2,080	50

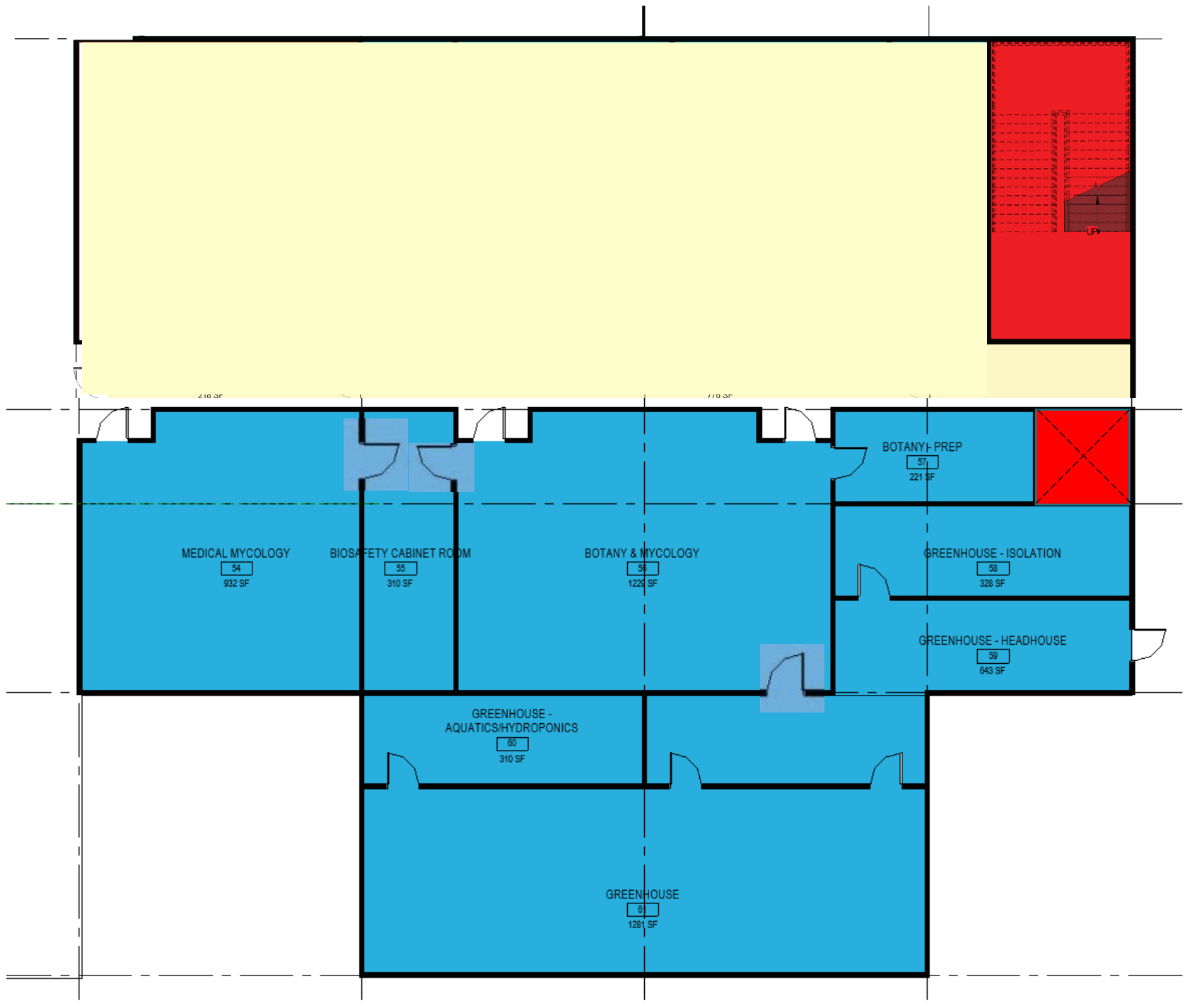
GREENHOUSE LAYOUT

2017



GREENHOUSE LAYOUT – UPDATED CONCEPT

- Contiguous Biology/Mycology spaces
- Unobstructed greenhouse solar angles
- Flex space for aquatics/hydroponics
- Isolation space building-conditioned air



GREENHOUSE LAYOUT

2017 GUIDEPLATE

