



STUDENT CENTER PLANNING PROJECT

November 30, 2011

CARTWRIGHT CENTER 1958



- Enrollment: 1,772
- Square Footage: 59,357
- Cost: \$810,921
- Named after Edith Cartwright
(Dean of Women, 1941-1969)

CARTWRIGHT CENTER 1964



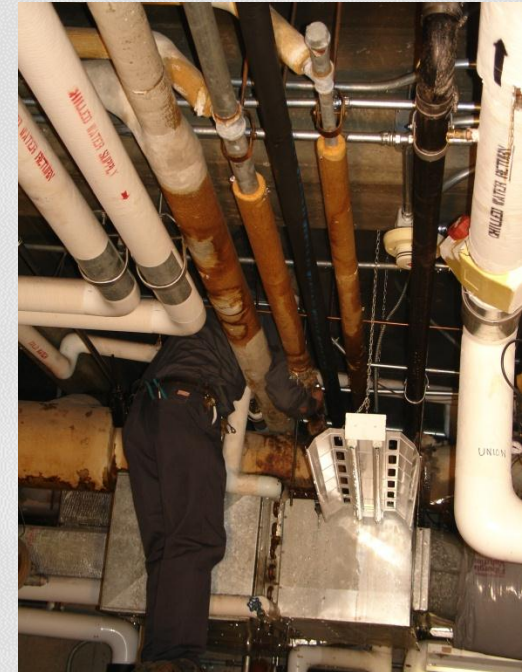
- Enrollment: 2,987
- Square Footage: 39,164
- Cost: \$705,817
- Included two multi-purpose rooms

CARTWRIGHT CENTER 1984



- Enrollment: 8,958
- Square Footage: 40,709
- Cost: \$5,898,000
- Named after Joe Gunning
(Dean of Men, 1947-1971)

CARTWRIGHT CENTER 2011



- Square Footage: 139,230
- Deferred Maintenance: \$26M

MASTER PLAN



VETERANS MEMORIAL STADIUM 2008



Cost: \$16.8M Stadium & Sports Fields

CENTENNIAL HALL 2009



Cost: \$44M

188,570 GSF

EAGLE HALL 2009



Cost: \$48M

228,248 GSF

PARKING & POLICE PROJECT 2012



Cost: \$12M

8,700 GSF

STUDENT UNION OPTION 1

- Renovation of Cartwright Center
 - Project Cost: \$26M
 - Seg Fee Increase: \$190/Student
 - FY13 to FY16: 4 x \$20/Year = \$80
 - FY16: \$110
 - Debt Service: \$1.9M/Year

STUDENT UNION OPTION 2

- New Student Union No Down Payment
 - Project Cost: \$55M
 - Seg Fee Inc.: \$312/Student in FY16
 - Debt Service: \$3.6M/Year
 - Seg Fees: \$3.1M
 - Dining Services: \$231K
 - Bookstore & Textbook: \$231K

STUDENT UNION OPTION 3

- New Student Union w/Down Payment
 - Project Cost: \$55M
 - PR Down Payment: \$4M
 - Seg Fee Increase: \$290/Student
 - FY13 to FY16: 4 x \$20/Year = \$80
(Seg fees kept at threshold)
 - FY16: \$210

STUDENT UNION OPTION 3 (CON'T)

- New Student Union w/Down Payment
 - PR Cash Funding: \$4M
 - Seg Fees: \$180K/Yr
 - Dining Services: \$250K/Yr
 - Bookstore & Textbook: \$160K/Yr

STUDENT UNION OPTION 3 (CON'T)

- New Student Union w/Down Payment
 - Debt Service: \$3.3M per Year
 - Seg Fees: \$3.1M
 - Dining Services: \$215K/Yr
 - Bookstore & Textbook: \$215K/Yr

STUDENT UNION SEG FEES

- Option 1 - Renovation: \$190
- Option 2 - New Union: \$312
- Option 3 - New Union w/PR Cash: \$290

