

UNIVERSITY *of* WISCONSIN
LA CROSSE



CAMPUS MASTER PLAN SUPPLEMENT

July 2005



TABLE OF CONTENTS

Appendices

| | | |
|----|--|----|
| A. | Planning Process | 1 |
| B. | Athletic Facilities Feasibility Study | 8 |
| C. | Athletics Feasibility Study Notes | 37 |
| D. | Master Plan Meeting and Workshop Notes | 63 |



APPENDIX A

Planning Process

The Campus Master Plan approach can best be explained in terms of the five basic phases undertaken to develop it:

- Defining the Issues
- Athletic Facilities Feasibility Study
- Campus-Wide Alternatives
- Preliminary Master Plan
- Final Master Plan

Phase 1: Defining the Issues

The first task the project team undertook was to gain a thorough understanding of issues facing the campus today and probable issues of the future. This was achieved through personal interviews, campus site tours, workshops with the Master Plan Steering Committee and analysis of existing physical conditions on and around campus. This analysis established a baseline for understanding the direction in which the university administration and the broader campus community as a whole desires the campus to be developed. Significant issues that were raised during this phase of the project included:

- Amount and accessibility of current parking both on and off campus
- Ease of wayfinding both to campus and within campus
- Internal vehicular circulation including bus service
- Bicycles and pedestrian access and safety, and conflicts with service routes and vehicles
- Potential for upgrades to the existing stadium and athletic fields complex
- Open space needs for organized and informal recreation opportunities for all students
- Current campus boundary and potential for expansion
- The need for a recognizable campus image/identity through the use of quality materials, distinctive signage, amenities and plantings
- The need to continually strive to achieve better “Town/Gown” relationships

These issues were considered in relation to several sets of information related to the existing physical conditions on and around the campus. These included:

- Campus base maps and aerial photography
- The University of Wisconsin La Crosse Campus Physical Development Plan (2002)
- The University of Wisconsin La Crosse Parking Study (2002)
- WisDOT West Avenue (STH 35) Improvement Project
- The Goosetown-Campus Neighborhood Plan (2001)
- Campus photo documentation

Through the synthesis of this information, the project team was able to weigh the desires of the campus community along with the physical characteristics of the campus and ongoing studies and plans for areas around and adjacent to the university in order to gain a full understanding of the issues facing the campus

today. The following sub sections summarize campus and community participation, regional context and campus existing conditions.

Campus and Community Participation

Periodically throughout the planning process for the Campus Master Plan, students, faculty, staff, administration and community members and leaders were invited to play a role in the shaping of the plan through project information sessions, workshops and review meetings. These sessions included the following events:

Project Kickoff

- A project kickoff meeting was held with University of Wisconsin System, UW-L, and Division of State Facilities representatives.
- A listening session was held with the Campus Master Plan Steering Committee.
- Two listening sessions open to all members of the university community that were held during working hours and in the evening.
- Two listening sessions open to all community members were held in multiple locations on campus during daytime and evening hours
- Listening sessions with numerous selected groups within the university

Alternatives Review

- A Campus Master Plan Alternatives review meeting was held on January 13, 2004 with the Division of State Facilities, the UW System and UW-L representatives.
- Two Campus Master Plan Alternatives review and input sessions were held on April 29, 2004 as public open houses at two locations on campus during afternoon and evening hours.

Master Plan Refinement

- Presentations of the Draft Master Plan were given to University System and UW-L representatives, and the Master Plan Steering Committee on November 10, 2004 for review and input.
- Public open houses for members of the university community and the general public were held on November 10, 2004 during afternoon and evening hours for review and input on the Draft Master Plan.
- Based upon comments received, the master plan was finalized.

Meeting and workshop notes are contained in Appendix D.

Regional Context

The University of Wisconsin-La Crosse is located within the City of La Crosse and is a vitally important part of the local economy. With a population of nearly 52,000, the City of La Crosse is an import regional center within western Wisconsin that is known for its scenic beauty, higher education centers and quality of living that citizens enjoy. Diagram A illustrates the regional setting of the UW-L campus.

Natural Features

The City of La Crosse lies between the Mississippi River that forms the western edge of the downtown area and the bluffs of the Coulee region that includes Granddad Bluff, the areas most prominent overlook. Three prominent rivers, the Mississippi, the Black and the La Crosse, give the area its unique terrain and opportunities for recreation. UW-L is located in the north central portion of the City and enjoys dramatic views of the bluffs and easy access to trails within the marshes associated with the La Crosse River.

Regional and Local Access

The UW-L campus is well situated in the City and within a walkable distance to the downtown and riverfront area. Major vehicular routes to the campus include La Crosse Street (STH 16) that forms the northern edge of the main campus, West Avenue (STH 35) located two blocks west of the main campus and US Highways 14, 61 and 53 that provide major access routes to the City. Interstate 90, located approximately five miles north of the UW-L campus and connected to both USH 53 and STH 16, provides access to areas throughout Wisconsin and Minnesota.

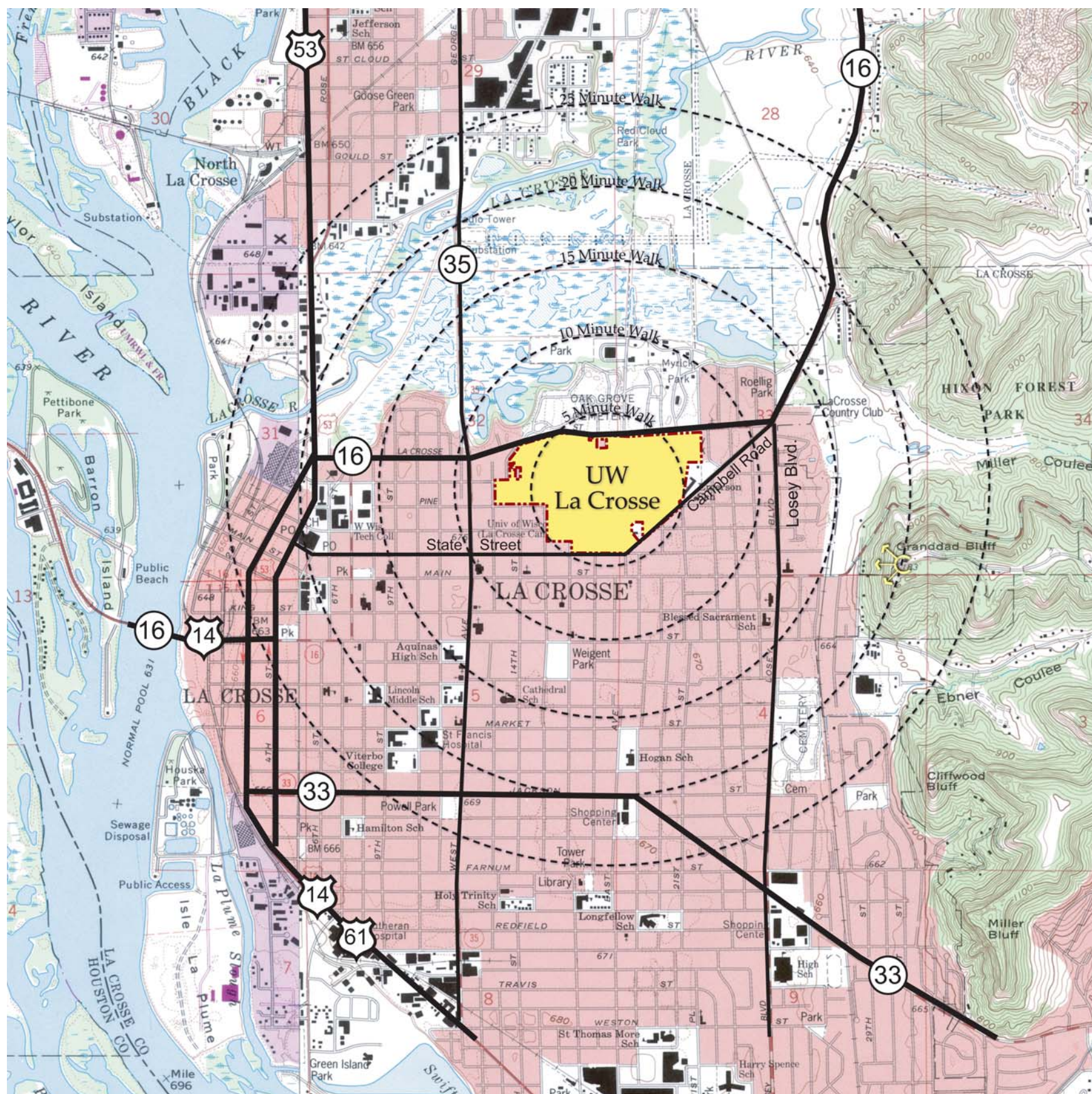
The UW-L campus is easily accessed via numerous local and collector streets. La Crosse Street, State Street and Campbell Road form the northern, southern and southeastern boundaries and provide access throughout the City. Potential future improvements to West Avenue include medians that will restrict access to campus by southbound traffic to La Crosse Street and State Street, thus strengthening the need for these access points to be developed as major campus gateways. Access to the north campus athletic fields is via East Avenue just north of the main campus entry.



Diagram A

Campus Regional Setting

February 2005



Campus Existing Conditions

The University of Wisconsin-La Crosse campus includes 118 acres on its main campus and north campus sites and includes 34 major buildings. It is served by three internal vehicular roadways and one corridor- Badger Street- that is open only to buses and service vehicles. The compact campus allows for most destinations within campus to be reached within a short walking distance. Major pedestrian corridors largely follow the historic rectilinear street pattern that was once a part of the campus and surroundings. Currently the symbolic center of campus is the clock tower near Murphy Library and Cowley Hall. Diagram B illustrates the major existing features of the main campus.

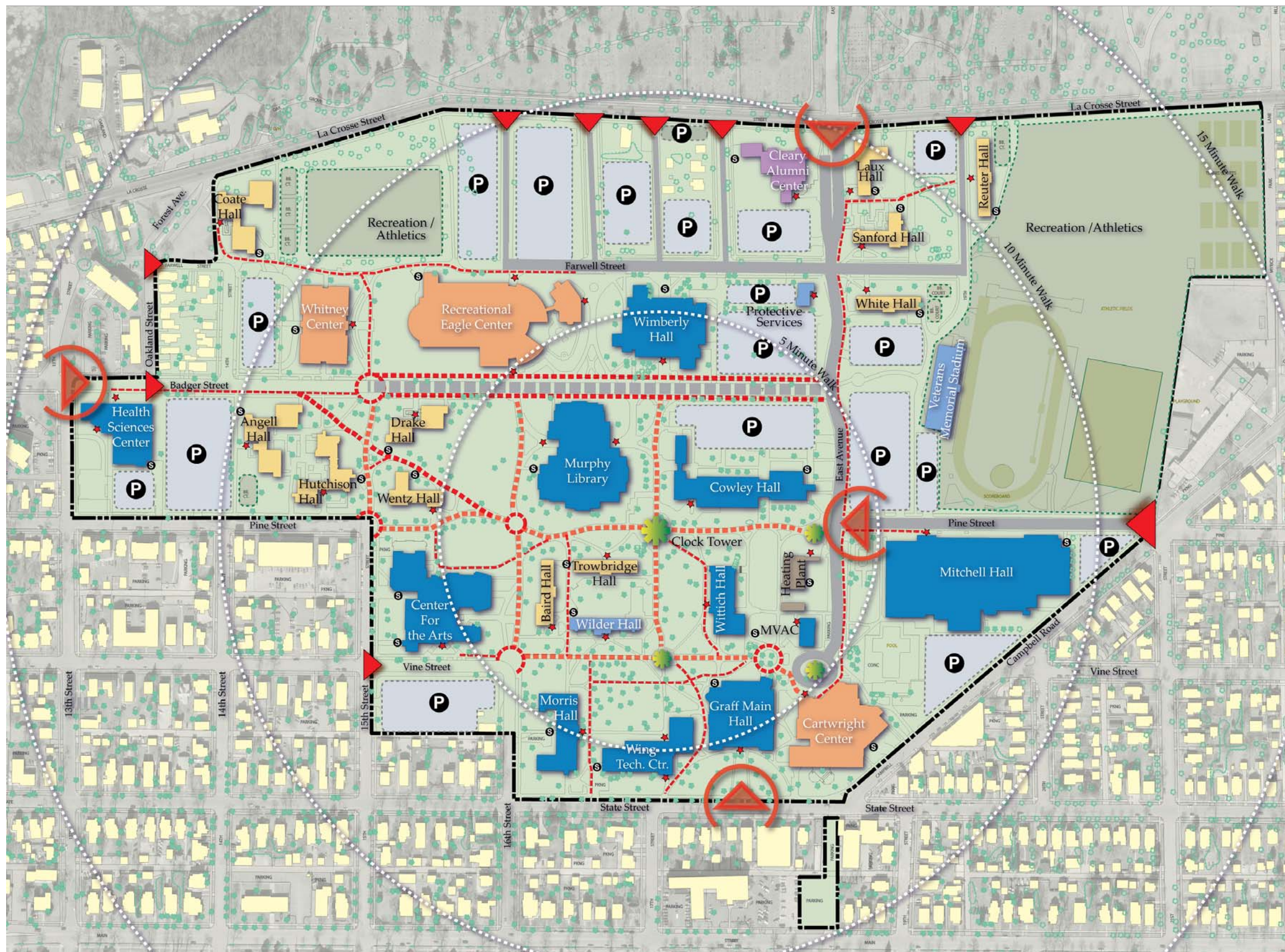


Diagram B

Campus Existing Conditions

July 2005

- Legend**
- Campus Boundary
 - Academic Building
 - Student Services/Activities
 - Residence Halls
 - Support/Other
 - Community/Alumni Outreach
 - P Parking
 - Athletics/Recreation
 - ★ Primary Building Entry
 - S Service Access
 - Campus Roadways
 - Major Pedestrian Routes
 - ⬇ Campus Gateways
 - ▶ Campus Access
 - ★ Campus Feature



Phase 2: Athletics Study

Athletics and recreation activities are a very important part of the daily campus life for a majority of students, faculty and staff at UW-L. As such, the athletics and recreation facilities as well as open spaces on campus are heavily used and are of prime importance to many in the University community. Given this prominence, the University and UW System initiated an Athletics Feasibility Study to be prepared in conjunction with this Master Plan. This feasibility study was undertaken to:

- assess the existing facilities,
- prepare and analyze a benchmarking report that examined the facilities on the campuses of peer institutions,
- develop a vision for the future of UW-L's athletics and recreation facilities, and
- make recommendations regarding the future development and maintenance of these facilities.

The full Outdoor Athletics and Recreation Facilities Feasibility Study can be found in Appendix B and background material related to this study can be found in Appendix C.

Phase 3: Campus-Wide Alternatives

Following the analysis phase of the planning process in which the issues and opportunities were gathered and studied, several campus-wide alternative diagrams and graphics were produced and evaluated. These plans were produced in order to study the different physical relationships of each alternative and to assess the merits of each in relation to the goals of the plan. After review of these alternative diagrams with the Steering Committee, three campus-wide Master Plan alternatives were developed and presented for feedback to the university community in a series of open-house style meetings on April 29, 2004.

Phases 4 & 5: Preliminary and Final Master Plans

Based upon the input received from the Steering Committee and the public within the University community regarding the three alternative Master Plan concepts and the Outdoor Athletics and Recreation Facilities Feasibility Study, a Preliminary Master Plan was developed. This plan was reviewed by the Steering Committee and members of the administration and general public. Comments were compiled by the University. After discussion, campus comments received were incorporated to develop the Final Master Plan.

This Master Plan for exterior campus facilities is intended to be both a multi-dimensional guiding vision and a living document for the further development of the University of Wisconsin La Crosse campus for the next 20 years. As a guiding vision, this plan represents the goals and visions of a broad cross-section of the campus community. The core goals and recommendations of this plan should be upheld and pursued in order to bring these to reality. As a living document, it is understood that a campus environment such as UW-L is a dynamic entity that continues to evolve and grow over time as it strives to carry out the University's mission. As this evolution occurs, sections of this Master Plan will likely need to be revisited, analyzed and adjusted. While some changes will inevitably occur, by maintaining a focus on the guiding principles of this Master Plan, its overall intent will remain intact for many years to come.



Outdoor Athletics and Recreation Facilities Feasibility Study

Introduction

The outdoor athletic and recreation facilities at the University of Wisconsin La Crosse are an integral part of the daily campus experience for students, faculty, staff and visitors. Of the 118 acres that make up the campus, the three major athletic facility areas, the Main Campus Athletics Complex, Coate Field and the North Campus athletic fields encompass 32 acres. Athletics at UW-L holds a long tradition of athletic excellence in its intercollegiate athletics programs, through the College of Education, Exercise Science and Allied Health and Recreation (CEESHR) and through the Recreational Sports Program. Together over 80% of UW-L students participate in one or more of these programs each year.

The purpose of this study is to examine the existing conditions of outdoor athletic and recreation facilities within the UW-L campus and the projected needs of the many competitive, academic and recreational sports programs offered by the University. Recommendations are then outlined for facilities that will serve the needs of each sport. Finally, construction phasing and anticipated construction costs are detailed.

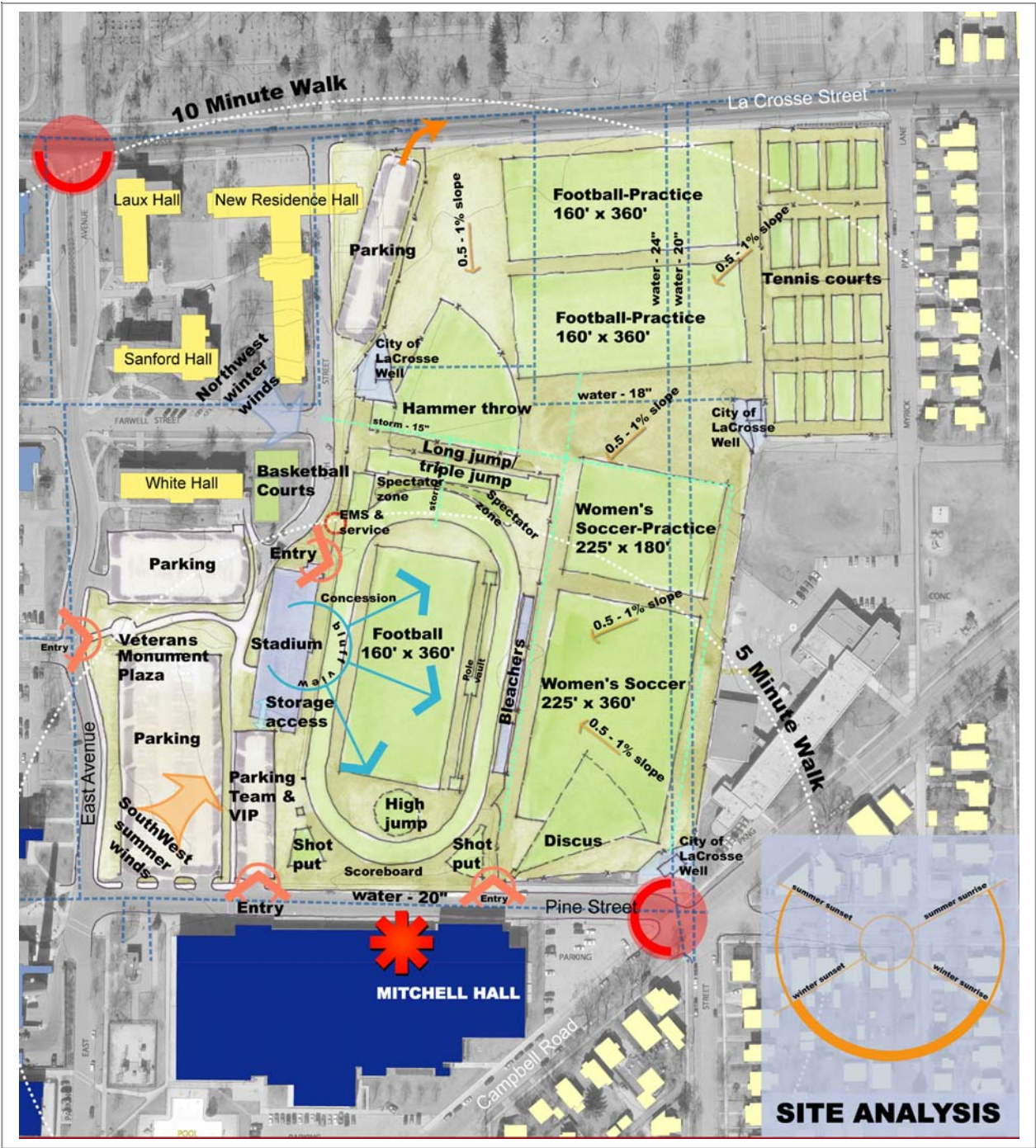
The recommendations in this study are intended to help UW-L retain its status as a university with first-quality athletic programs, educational resources for athletically-focused programs and venues for student recreation. The implementation of these recommendations will help UW-L to attract and retain the best students and athletes and will give UW-L facilities that are in line with public and private peer institutions across the state and the region.

Existing Conditions of Athletic Facilities

Existing athletic facilities within the UW-L campus were examined within the context of both their physical environment and within the context of their access and connectivity to other parts of the campus and surrounding uses. Physical environment analyses included existing structures, topography, utilities, vegetation, wetlands, roadways, soils and sun and wind patterns. Access and connectivity issues addressed during these analyses included surrounding land uses, surrounding campus building functions, vehicular, pedestrian and service access, wayfinding, current overlapping of facility usage and special events access. Diagrams A and B. illustrate a site analysis of the existing facilities and physical conditions in the stadium area of main campus and of the north campus facilities. Following these diagrams are specific listings of existing athletic facilities by sport.

A. Main Campus Athletics Complex

Diagram A.- Main Campus Analysis



Stadium

Veterans Memorial Stadium was acquired by the State for UW LaCrosse in the 1980s. The west stands of the existing stadium are believed to have been built in the 1920s and were renovated in 1988.

The west grandstand is a cast-in-place concrete structure whose open-air seating forms the roof for enclosed areas below. A fluid-applied membrane acts as a waterproofing system. The exterior wall is composed of the original brick and clay tile unit system that is clad in an exterior insulation finish system installed during the 1988 renovation. Most windows were eliminated in this renovation. The footprint of the west grandstand is approximately 72 feet by 235 feet. The lowest row of seating is approximately 9 ½ feet above grade. The east grandstand is a steel truss-leg structure with aluminum plank seating.

The structural condition of the west grandstand was investigated in the course of this study. The concrete frame of the structure appears to be in relatively good condition, as does the exterior wall system.

However, the structure exhibits two major deficiencies affecting its condition and continued useful life. First, the roof deck of the structure leaks significantly. Water penetration has made the use of the storage, locker and toilet room areas under the stands marginal at best. These leaks occur at points where the waterproofing membrane has deteriorated due to foot traffic wear and at movement joints in the concrete frame. The date of installation of the waterproofing membrane is unknown, but it likely dates from the 1988 renovation.

Second, the structure exhibits corrosion of the reinforcing steel. In some areas it is severe, but in the majority of the structure is minor to moderate. The landings of the main entry ramps to the stadium appear to have been replaced in an earlier project. However, the ramps leading to the landings were not replaced and areas of spalled concrete reveal severe corrosion. Corrosion was also observed at the columns and beams along the east exterior edge of the grandstand and in several areas under the seating. The corrosion occurs at areas of the roof leaks, in areas that are most exposed to the sun and resulting freeze/thaw cycles in the winter months, and in areas where the reinforcing steel is close to the surface of the concrete. Corrosion can develop for a variety of reasons, most of which involve various ways of allowing introduction of water to the reinforcing steel in the concrete. The primary concern with corrosion is that once it has started it often continues even if the cause of corrosion can be eliminated. Testing to determine the level of active corrosion will be necessary to determine the salvage-ability of the structure and nature of needed repairs.

Seating: The capacity of the west stands 2,867 persons and of the east stands approximately 1,500; both in bench seating. With portable bleachers providing up to 200 additional seats, the total capacity of the stadium is 4,567 seats.

Accessibility: Accessibility updates for the west stands were performed as part of the 1988 renovation or thereafter. These include addition of a wheelchair lift near the northeast corner of the stands and an open area for wheelchair seating.

Lighting: The field is lit for night play. Lights are mounted on truss-type steel towers and are believed to be more than 50 years old.

Sound system: The existing sound system speakers are mounted on the light towers and controlled from the press box.

HVAC: The stadium has no overall cooling or heating system. Local unit fans serve the VIP seating and press boxes.

Press box: A press box and VIP seating box have been constructed across the top level of seating. These are light-framed wood stud structures with minimal amenities.

Interior space condition and utilization: Several types of spaces are built out in the space under the west grandstand. These include Changing rooms, Team Meeting Rooms, Toilet Rooms, Storage, Memorial Room, and Concessions. With the exception of the Memorial Room, condition of these spaces is marginal due to the water leakage problems.

Competition and Practice Fields

Football

- Irrigated natural turf
- Crowned and surface drained
- Soil is a sandy loam
- Hosts an average of 15-18 competition events each year (UW-L, Aquinas H.S., La Crosse Central H.S.)
- Home side sideline space is approximately 12' x 150' and the surface is composed of synthetic carpet covered plywood panels
- Orientation is north-northeast to south-southeast
- Football currently uses two full practice fields located at the north end of the site. Both fields are uncrowned irrigated natural turf and are oriented east to west. Football uses its competition field as a practice facility as well.

Women's Soccer

- Natural turf
- Slopes northeast to southeast at between .5% and 1%
- Orientation is north-northeast to south-southeast
- Field size is 225' x 360'
- Portable goals are used
- Portable bleachers for approximately 150 spectators
- No permanent press box or scorers booth
- Ample sideline space
- Women's soccer currently uses a practice field that is approximately one half of a competition field. This is located immediately north of the competition field. Orientation of this practice field is north-northeast to south-southeast.

Track and Field

- 400 meter 9-lane polyurethane coated track (42" lane width)
- Track has received numerous re-applications of polyurethane and the manufacturer does not recommend another re-surfacing
- One runout in northwest corner of track
- Turn radius is approximately 110'
- The electronic timing system is linked to the press box and is located in a temporary structure in the infield adjacent to the finish line
- High jump pit is located inside the south D zone of the track
- Steeplechase jump is located in the north D zone of the track
- Dual long jump and triple jump runways and pits are located outside the track area to the north
- Two shot put areas are located outside the track area to the south. The southeast shot put areas is undersized for men's competition play
- Hammer throw has a dedicated cage and field area to the north of the track
- Discus uses a temporary cage and utilizes portions of the soccer field for its throwing area
- Javelin utilizes the turf practice and competition fields to the east of the track and does not have a permanent paved runway

Tennis

- 16 fenced courts (fenced in four bays of four courts)
- No lighting
- No spectator seating
- Coated asphalt surface is in good condition, however expansion joints are separating and need maintenance
- Wind screens are utilized
- Space between back of court and back fence is approximately 21'
- Side space between courts is approximately 10'
- Orientation is north to south

Recreation Fields

The recreation sports program currently locates three intramural softball fields over the practice football and practice and competition soccer fields. These fields do not utilize backstops or clay infields, but rather play on lined turfgrass fields. Games are played in the late afternoon until daylight savings time allows for early evening games.

Storage for Main Campus Athletics Complex

Storage for athletic teams that utilize the main campus athletics complex is widely scattered throughout several buildings and the stadium. Inside the stadium a combination of locked open air storage cages and rooms hold equipment for football and track. Outbuildings consisting of small residential-type wood frame sheds hold women's soccer, additional track and field equipment and tennis nets and equipment. Conditions in these many storage areas vary, and some are susceptible to water damage, pests, and potential vandalism.

Vehicular, Pedestrian and Service Access

Vehicular access, as illustrated in Diagram A., is predominantly via the two parking lots that enter onto Pine Street and via the extension of 19th street to the north end of Veterans Memorial Stadium. Service vehicles also use these routes and major areas of service access are the areas adjacent to the team and VIP parking to the south end of the stadium and at the north end of the stadium at the end of 19th Street. Pedestrian access to the athletics complex is predominantly from Mitchell hall across Pine Street either through the team and VIP parking area and just east of the shot put area on the east side of the track. The remainder of pedestrians filter into the west side of the athletics complex from various locations on campus.

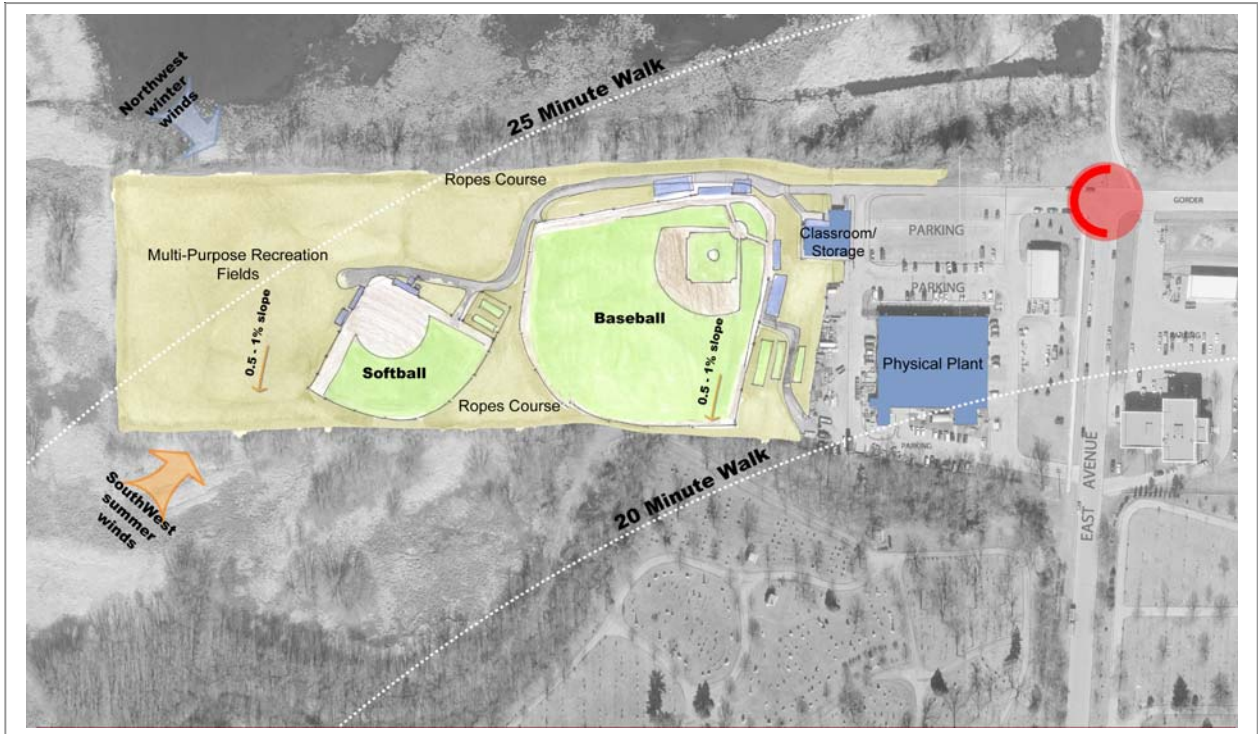
Stormwater Management and Utilities

Stormwater within the main campus athletics complex generally flows from northeast to southeast at slopes of 0.5% to 1%. Excess stormwater is collected through a series of inlets located within the practice areas and connected to the City storm sewer system. Stormwater within the stadium area is collected from the football field and track via a perimeter underdrain and inlet system. The university is currently undertaking a study to produce a stormwater master plan. That plan will address current conditions and make recommendations for potential future growth and development.

Several large utility lines also cross the competition and practice fields, most in conjunction with the three City of La Crosse well houses located within the athletics complex area. These utility lines include a parallel pair of 20" and 24" water lines that run north to south along the eastern edge of the area and a system of 18" water lines connecting the pump houses. A series of storm sewer lines and manholes as mentioned above also are located predominantly within the soccer and football practice areas.

B. North Campus Athletic Facility

Diagram B.- North Campus Analysis



Baseball

- Turf and clay infield is in good condition
- Outfield is in good condition
- Warning track is susceptible to periodic flooding along outfield fence
- Outfield fence distances are 320' along the foul lines and 390' to center field
- Distance from home plate to the backstop is approximately 60'
- Dugouts are approximately 8' x 48' and are constructed of wood framing and plywood siding. First base line dugout includes a second level press box
- Bullpens (two pitching mounds each) are along each base line
- Full warning track around all fence lines
- Orientation from home plate to the pitchers mound is to the southwest
- No night lighting
- Two batting cages
- Spectator bleachers seat 1500.
- Outfield and sideline fences are 8' chain link

Softball

- Turf and clay infield is in good condition
- Irrigated outfield is in good condition
- Warning track is susceptible to periodic flooding along outfield fence
- Dugouts are approximately 8' x 48' and are constructed of wood framing and plywood siding similar to that of baseball
- Third base line dugout includes a second level press box
- Spectator bleachers seat approximately 300.
- Bullpen (two mounds) is located along the third base side
- 220' outfield fence along the foul line and center field
- Distance from home plate to the backstop is approximately 28'
- Full warning track around all fence lines
- No night lighting
- Outfield and sideline fences are 8' chain link with a padded cap

Recreation Fields

The recreational sports program utilizes approximately four acres of the north campus athletic site for intramural and club sport use. During the spring two intramural softball fields are located to the far east of the site. During the fall, three intramural flag football fields are used in this location and the space just north of the softball field is utilized for men's soccer practice.

Ropes and Challenge Course

The recreational sports program maintains a ropes and challenge course at two locations within the north campus athletic site. One segment of the ropes course is located between the service drive and the adjacent marsh line just north of the baseball field. The second placement of the ropes course is located in the triangular area between the outfields of the baseball and softball fields. The ropes course is used by recreational sports, CEESHR and various community groups. It consists of 10 elements set at various heights from ground level to 35' above ground. The intent of the ropes and challenge course is to provide an interesting area to teach groups communication and teamwork skills.

Vehicular and Pedestrian Circulation and Parking

Access for vehicles and pedestrians to the north campus athletics site is via East Avenue and parking is limited to lot commuter lot C-5 (113 spaces). As this parking is limited, participants and spectators often are required to park on Gorder Street behind Myrick Park, along East Avenue, or on main campus. Maintenance access to the baseball, softball fields and beyond are via a gated access drive from the parking lot.

Storage for North Campus Athletics Facilities

Storage areas to serve this area include one half of the classroom/storage building located adjacent to the parking lot and two small wooden residential style sheds.

Stormwater Management and Utilities

Stormwater at the north campus athletic site generally flows at between 0.5% and 1% slopes from the northeast to the southwest, with the baseball and softball fields crowned to drain to the sidelines. This area is prone to periodic flooding and during most spring seasons the practice fields are saturated and use is suspended. No major utilities are known to be present within the field areas. The university is currently undertaking a study to produce a stormwater master plan. That plan will address current conditions and make recommendations for potential future growth and development.

C. Coate Field***Recreation and Practice Fields***

Coate Field is a 2.5 acre multi-purpose practice and competition field adjacent to Coate Hall and the Whitney Center that is utilized by recreational sports, CEESHR and the UW-L marching band. The field is irrigated natural turf and receives a high level of maintenance due to its athletic usage. Currently band, men's and women's club rugby, men's and women's club lacrosse, club soccer, ultimate Frisbee and intramural softball share this space.

Table 6 outlines these field needs by season.

Vehicular and Pedestrian circulation and Parking

Coate field is located near many of the large residential and commuter parking lots on campus. It is accessed via the west end of Farwell Street. Coate Field is easily accessed by pedestrians as it is surrounded by campus and City sidewalks.

Stormwater Management and Utilities

Several utilities cross portions of Coate Field including three water lines, one storm sewer and one gas line. The university is currently undertaking a study to produce a stormwater master plan. That plan will address current conditions and make recommendations for potential future growth and development of utilities.

Utilization of Existing Athletic Facilities

At UW-L the existing athletic and recreation facilities receive heavy usage due to the needs of intercollegiate sports teams that require practice and competition space, club sport practice and competition space, academic instruction and training space needs by CEESHR, and organized and informal recreational sports usage. The result of these multiple user groups is that individual fields, facilities and practice spaces host several sports or activities, often within the space of a day or week. Tables 1 through 5 below list the competition and practice space currently needed by athletic teams and recreational sports for both spring and fall semester play.

Tables 1 & 2 – Fall Facility Usage by Sport

Varsity Sports

| Sport | Field or Play Area | Number | Size (WxL) | Size (sf) | Total Area (sf) | Size (ac) |
|------------------|--------------------------|--------|---------------|-----------|-----------------|-----------|
| Varsity Football | Competition | 1 | 160x360 | 57,600 | 57,600 | 1.32 |
| | Practice | 2 | 160x360 | 57,600 | 115,200 | 2.64 |
| Women's Soccer | Competition | 1 | 225x360 | 81,000 | 81,000 | 1.86 |
| | Practice | 0.5 | 226x360 | 81,000 | 40,500 | 0.93 |
| Baseball | Competition and Practice | 1 | 370' CF Fence | 122,500 | 122,500 | 2.81 |
| Softball | Competition and Practice | 1 | 220' CF Fence | 46,600 | 46,600 | 1.07 |
| Tennis | Competition and Practice | 1 | 12 Courts | 87,400 | 87,400 | 2.01 |

Fall Varsity
Acreage Used 12.64

Recreational Sports

| Sport | Field or Play Area | Number | Size (WxL) | Size (sf) | Total Area (sf) | Size (ac) |
|-------------------------|--------------------|--------|---------------|-----------|-----------------|-----------|
| Flag Football | Competition | 3 | 120x280 | 33,600 | 100,800 | 2.31 |
| Kickball | Competition | 1 | 220' CF Cence | 46,600 | 46,600 | 1.07 |
| Men's Club Soccer | Practice | 1 | 120x300 | 36,000 | 36,000 | 0.83 |
| | Competition | 1 | 225x360 | 81,000 | 81,000 | 1.86 |
| Men's Club Lacrosse | Competition | 1 | 216x345 | 74,520 | 74,520 | 1.71 |
| Men's and Women's Rugby | Competition | 1 | 213x460 | 97,980 | 97,980 | 2.25 |
| Ultimate Frisbee | Competition | 1 | 160x300 | 48,000 | 48,000 | 1.10 |
| Band | Practice | 1 | 170x400 | 68,000 | 68,000 | 1.56 |

Fall Rec
Acreage Used 12.69

Total Fall
Acreage Needs 25.34

Tables 3 & 4 -Spring Facility Usage by Sport

Varsity Sports

| Sport | Field or Play Area | Number | Size (WxL) | Size (sf) | Total Area (sf) | Size (ac) |
|-----------------|--------------------------|--------|---|-----------|-----------------|-----------|
| Track and Field | Competition and Practice | 1 | Track, Infield and Throwing Events Area | 394,200 | 394,200 | 9.05 |
| Baseball | Competition and Practice | 1 | 370' CF Fence | 122,500 | 122,500 | 2.81 |
| Softball | Competition and Practice | 1 | 220' CF Fence | 46,600 | 46,600 | 1.07 |
| Tennis | Competition and Practice | 1 | 12 Courts | 87,400 | 87,400 | 2.01 |

Spring Varsity
Acreage Used 14.94

Recreational Sports

| Sport | Field or Play Area | Number | Size (WxL) | Size (sf) | Total Area (sf) | Size (ac) |
|-------------------------|--------------------|--------|------------|-----------|-----------------|-----------|
| Softball | Competition | 7 | 275' CF | 64,375 | 450,625 | 10.34 |
| Men's Club Lacrosse | Competition | 1 | 216x345 | 74,520 | 74,520 | 1.71 |
| Men's and Women's Rugby | Competition | 1 | 213x460 | 97,980 | 97,980 | 2.25 |
| Ultimate Frisbee | Competition | 1 | 160x300 | 48,000 | 48,000 | 1.10 |

Fall Rec
Acreage Used 15.41

Table 5 – Total Land Available

| | |
|--------------------|-------|
| Total Fall Acreage | 30.34 |
|--------------------|-------|

| | Total Land Area- Athletics & Recreation (sf) | Total Land Area- Athletics & Recreation (ac) |
|-----------------------------|--|--|
| Main Campus Athletic Fields | 814,831 | 18.71 |
| Coate Field | 107,360 | 2.46 |
| North Campus Fields | 468,676 | 10.76 |
| Total | 1,390,867 | 31.93 |

A. Summary

Tables 1 through 5 serve as a guide for the physical space needs of individual sports and activities. As shown in table 5 the total of the three athletics and recreation areas is 31.93 acres. Fall and spring physical space needs for athletics and recreation total 25.34 ac and 30.34 acres respectively. This, however, does not translate into a surplus of playing space within the university. Rather, several other factors need to be taken into account including:

- Facilities needed for use by CEESHR vary widely depending upon the curriculum and courses being offered. As these total field needs are not quantifiable in many cases, they have not been included
- Several athletic facilities have little or no ability to be used for other activities. Examples of this are the baseball and softball fields and areas such as the track and field hammer throw and shot put areas.
- Dependent upon amounts of use and weather, some sports and activities need to adjust field locations or practice orientations in order to avoid degradation of the turf

The current system of overlapping uses by athletic teams, academic use and recreational sports often requires great amounts of communication and intricate coordination in order to meet the needs of each sport or activity. Programs and classes often need to adjust their schedule, location or curriculum in order to “fit” within all the multiple uses being accommodated on campus. As a result of this, programs such as the recreational sports program are forced to spread their play areas for individual sports across all of the athletic and recreational spaces available at UW-L. An example of this is intramural softball which utilizes two fields at north campus, two fields at Coate Field and three fields at the main campus athletics complex.

While the basic acreages required as compared to acres available may show that there is a surplus of land, the actual use, based upon the information explained above leads to the following conclusions:

- The athletics and recreation programs at UW-L are operating in less space than they need to run their program schedules efficiently.
- With the many overlapping schedules and uses, it is difficult to retain high quality and well-maintained turf fields.
- Due to the many overlapping uses on both practice and competition fields in both the fall and the spring, the turf is at or beyond its limit of use with normal maintenance.
- Lack of field lighting limits potential usage by teams or recreational sports

Benchmarking Analysis and Visioning

A benchmarking analysis was conducted to compare the athletic facilities on the UW-L campus with those of the eight other WIAC schools and four private institutions within the region. For this comparison, the major athletic events of Football, Track and Field, Women's Soccer, Baseball, Softball and Tennis were compared. By comparing the existing facilities present on the UW-L campus for these events of against the facilities at peer institutions, an evaluation was made that identifies apparent deficiencies in UW-L's athletic facilities. This evaluation, in conjunction with the analysis of existing conditions and the visions of University faculty, coaches, administration and staff combine to form the recommendations within this study.

Following are tables that allow comparisons between schools within each sport. Table 7. includes data from all major athletic programs at UW-L as compared to the other WIAC schools. Tables 8 through 13 are more detailed comparisons by sport with the schools seen as UW-L's closest peers and selected private institutions that are seen as benchmark programs within each sport.

Table 7. – Benchmark School Facility Comparisons

| | | La Crosse | Eau Claire | Oshkosh | Platteville | River Falls | Stout | Stevens Point | Superior |
|----------------|--------------------|----------------|-----------------------|---------------------|--------------------|----------------|----------------|--------------------|---------------------|
| Football | Spectator Capacity | 4,349 | City Facility - 6500 | 10,000 | 10,000 | 3500 | 4,500-5,000 | City Facility-3000 | N/A |
| | Playing Surface | Natural Grass | Natural Grass* | Prestige** | Synthetic Turf**** | Natural Grass | Astro T-2000 | Natural Grass | N/A |
| | Lighting | Yes | Yes | Yes | Yes | Yes | Yes | Yes | N/A |
| Track | Spectator Capacity | 4,349 | 100-200 | 10,000 | 10,000**** | 3500 | 800 | 100-200 | 200 |
| | Playing Surface | Rubberized | Rubberized | Rubberized | Rubberized | Rubberized | Rubberized | Rubberized | Rubberized |
| | Lighting | Yes | None | Yes | Yes | Yes | None*** | None | None |
| Women's Soccer | Spectator Capacity | 150-200 | 100-200 | 10,000 | 10,000**** | 100-200 | 1000+ | 100 | 200 |
| | Playing Surface | Natural Grass | Natural Grass | Synthetic and Grass | Synthetic Turf**** | Natural Grass | Natural Grass | Natural Grass | Natural Grass |
| | Lighting | None | None | Yes/No | Yes**** | None | Yes | None | None |
| Baseball | Spectator Capacity | 1,500 | N/A | 600 | 100-200 | N/A | 1,000 | 200 | 200 |
| | Playing Surface | Natural Grass | N/A | Natural Grass | Natural Grass | N/A | Natural Grass | Natural Grass | Natural Grass |
| | Lighting | None | N/A | None | None | N/A | None*** | None | None |
| Softball | Spectator Capacity | 300 | City Facility 500-750 | 250 | 150-200 | 300 | 450 | 200 | City Facility - 100 |
| | Playing Surface | Natural Grass | Natural Grass | Natural Grass | Natural Grass | Natural Grass | Natural Grass | Natural Grass | Natural Grass |
| | Lighting | None | Yes | None | None | None | Yes | None | None |
| Tennis | Number of Courts | 16 | 8 | 12 | N/A | 8 | 6 | 8 | N/A |
| | Spectator Capacity | None | None | 50 | N/A | 200 | None | None | N/A |
| | Playing Surface | Coated Asphalt | Asphalt | Coated Asphalt | N/A | Coated Asphalt | Coated Asphalt | Coated Asphalt | N/A |
| | Lighting | None | None | Some | N/A | None | Yes | None | N/A |

* The City of Eau Claire and UWEC are raising money to install artificial turf at Carson Park

** Planned athletic complex includes artificial turf for football and women's Soccer

*** UW Stout is looking to light the football practice field, track and baseball

**** To be available fall 2005 after renovations to track and football field

Tables 8 to 13 – Detailed Benchmark

| | | La Crosse | Oshkosh | Stout | Whitewater | St John's |
|----------|---------------------|-----------------|------------------------------------|--|--------------------------|------------------------|
| Football | Spectator Capacity | 4,349 | 10,000 | 4,500-5,000 | 10,000 | 5,500 |
| | Playing Surface | Natural Grass | Synthetic (Prestige-Rubber Infill) | Astro T-2000 | Natural Grass | Synthetic |
| | Lighting | Yes | Yes (Competition and TV) | Yes (Competition and TV) | Yes (Competition and TV) | Yes |
| | Irrigation | Yes | NA | NA | Yes | NA |
| | Practice Fields (#) | 2-Natural Grass | 2 Natural Grass | 1 Synthetic Play Field and 1 Natural Grass | 4 -Natural Grass | Play Field (Synthetic) |
| | Lighting | None | None | None* | None | Yes |
| | Irrigation | Yes | None | Yes | Yes (surface) | N/A |

* UW Stout is looking to light the football practice field, track and baseball

| | | La Crosse | Oshkosh | Stout | Whitewater | MacAlester |
|-------|--------------------|---|---|---|--|---|
| Track | Spectator Capacity | 4,349 | 10,000 | 800 | 450 | 4,000 |
| | Playing Surface | Rubberized | Rubberized - Mondo (Synthetic Infield) | Rubberized | Rubberized (currently in disrepair) | Rubberized |
| | Lanes | 9 | 9 | 9 | 8 | 9 |
| | Lighting | Yes | Yes | None | None | Yes |
| | Other | Infield width fits football and includes pole vault pit | Permanent electronic timing in press box. Infield supports regulation soccer. | Currently no timing booth/facilities. Infield width fits football | Portable Electronic timing. No press box. No play fields on infield. | Permanent electronic timing in press box. Infield supports regulation soccer. |

| | | La Crosse | Oshkosh | Stout | Whitewater | Wheaton College |
|----------------|---------------------|------------------------------|--|---|------------------------------|------------------------------|
| Women's Soccer | Spectator Capacity | 150 | 10,000/1,000 | 1000+ | 200 | 2,000 |
| | Playing Surface | Natural Grass 225'x360' Flat | Synthetic / Grass 225'x360' Flat / Grass field is crowned and narrower | Natural Grass 225'x360' Crowned | Natural Grass Flat 225'x360' | Natural Grass 225'x360' Flat |
| | Lighting | None | Yes (Competition) /No | Yes (Competition) | None | Yes |
| | Irrigation | Yes | NA/Yes | Yes | None | Yes |
| | Practice Fields (#) | Half Field | 2 | Competition field and Baseball outfield | 2 | 1 (rotates) |
| | Lighting | none | None | Yes / No | Yes | None |
| | Irrigation | yes | Yes | Yes / No | Yes | Yes |

| | | La Crosse | Oshkosh | Stout | Whitewater |
|----------|--------------------|---|---|--|--|
| Baseball | Spectator Capacity | 1500 | 600 | 1000 | 200 |
| | Playing Surface | Natural Grass | Natural Grass | Natural Grass | Natural Grass |
| | Fence Distance | 320' Lines, 390' Center Field | 320' Lines, 390' Center Field (12' Fence) | Unknown | 320' Lines, 380' Center Field |
| | Dugouts/Pressbox | Plywood Construction | Both Lines - Brick | 3rd Base line - Brick, 1st Base line-Plywood | Concrete block structures. Home side has concession, locker room and second floor press box. |
| | Bullpens | One bullpen on each baseline. Two mounds each | One bullpen on each baseline. Two mounds each | Both Lines - one mound each | One bullpen on each baseline. Two mounds each |
| | Lighting | None | None | None* | None |
| | Irrigation | None | None | None | None |

| | | La Crosse | Oshkosh | Stout | Whitewater |
|----------|--------------------|-----------------------------|---|--|--|
| Softball | Spectator Capacity | 300 | 250 | 450 | 200 |
| | Playing Surface | Natural Grass | Natural Grass | Natural Grass | Natural Grass |
| | Lighting | None | None | Yes (competition) | None |
| | Fence Distance | 220' Center Field fence | 190' Lines, 220' Center Field | 200' (portable) | 200' Center Field fence |
| | Dugouts/Pressbox | Both Lines - Plywood | Both Lines - Brick | 3rd Base line - Brick, 1st Base line-Temporary | One of two fields has plywood dugouts. |
| | Bullpens | Two mounds on 1st base side | One bullpen on each baseline. Two mounds each | Not in place yet. Likely to use synthetic turf area on football field. | Four mounds/plates located between two softball fields |
| | Irrigation | None | None | Yes | None |

| | | La Crosse | Oshkosh | Stout | Whitewater |
|--------|--------------------|-----------|---------|-------|-------------------|
| Tennis | Number of Courts | 16 | 12 | 6 | 12 |
| | Spectator Capacity | None | 50 | None | 200 |
| | Lighting | None | Some | Yes | Yes (competition) |

* UW Stout is looking to light the football practice field, track and baseball

** UW Oshkosh will have two 400 Meter track facilities at the end of their athletics development project (Seating of 1000 at second facility)

A. Summary of Benchmarking Comparisons

Football

- Spectator Capacity is lower than most benchmark schools and the lowest among UW-L's closest peers
- Turf grass playing field is overused due to use by UW-L Football, UW-L Band, Bluestars drum and bugle corps, Aquinas High School and La Crosse Central High School football games and the WIAA football playoff games.
- Lighting is present at Veterans Memorial Stadium, but due to it's age and inefficiencies, it is low performing when compared to peer schools
- Four of eight WIAC schools either have or are planning to install synthetic turf

Track and Field

- While currently in serviceable condition, the track is at the end of its useful life and will need complete replacement within the next three to five years
- Facilities are not of a high enough quality to host national track meets
- Pole vault pit is located very near the inside lane of the track (less than 5') and creates a hazard to runners
- Javelin does not have a permanent paved runway
- The quality of facilities as compared to existing and planned facilities of several peer schools puts the future hosting of the State track meet in jeopardy

Women's Soccer

- Lighting is not available for night time practice and competitions
- Half-field practice area limits usage possibilities and has the potential for overuse of turf
- Little spectator seating and no permanent press box
- Dual use of competition field for track and recreational sports strains natural turf

Baseball

- Dugouts and press box are substandard
- Location of dugouts press box require that spectator seating is placed far down the baselines, limiting sufficient viewing
- Bleachers are outdated and not to a quality that meets current standards
- Access and parking for players and spectators is a limiting factor for practice and competition play

Softball

- Dugouts and press box are substandard
- Location of dugouts press box require that spectator seating is placed far down the baselines, limiting sufficient viewing
- Bleachers are outdated and not to a quality that meets current standards
- Outfield fence at 220' is too far for competition play. 200' is preferred
- Access and parking for players and spectators is a limiting factor for practice and competition play

Tennis

- Lighting is not available for night time practice and competitions
- No facilities such as drinking water or restrooms are near the tennis courts

Recommendations

Following a presentation of benchmark comparisons to faculty, coaches, administration and staff a visioning workshop was held to solicit ideas for the future of UW-L's athletic and recreation facilities. Important topics raised and issues discussed during this workshop included:

- Varsity athletic programs need to be seen as being in the upper echelon of the conference
- The State track meet is of primary importance and facilities should be improved to retain this event
- Upgrade facilities to aid in the recruitment of athletes and general population students

Using the information gathered in the visioning workshop, the current space use analysis, the benchmarking data and the analysis of existing physical conditions, recommendations have been made that provide a vision for the long range development of athletic and recreation facilities at UW-L. The recommendations that follow below are intended to be implemented within a five year time frame and, when fully implemented, will provide reliable, high-quality facilities for athletics, recreation and academic uses.

A. Stadium

Program recommendations for the redevelopment or replacement of the current Veterans Memorial Stadium including the following:

- Capacity to accommodate the spectators for the WIAA State High School Track Championships and accompanying service amenities. UW-La Crosse has hosted the meet since 1990. This capacity is estimated at 8,000 to 12,000 currently and projected to grow in the future. A capacity target of 10,000 permanent seats was set, with the understanding that temporary bleachers would supplement that number as needed. Approximately 6,000 seats are needed for the University's football games.
- Stadium amenities such as Ticketing, Concessions and Merchandise, Pressbox, Chancellor's Box, a Filming Platform and Public Restrooms.
- Space under the main stadium grandstands for a variety of program elements, including Locker Rooms for teams using the fields, an Athletic Training Satellite Facility, and a Classroom. Locating these spaces in the stadium would improve adjacencies to the playing fields for the teams as well as relieve space pressures in Mitchell Hall.
- Additional secure and lighted storage for field athletic equipment and maintenance equipment within the main stadium grandstands.
- Space under the east grandstands to include secure and lighted storage bays for athletic and recreation programs that is easily accessible via the central walkway/maintenance access drive.

- Provide permanent restrooms and a concession area underneath the east grandstands.

In preparing a recommendation for this study, the project team created two models for review and comparison. Both models include seats for 10,000 spectators and comparable program space under the grandstand. These models are:

- A. Refurbish the existing stadium and add new seating to reach 10,000 seats
- B. Demolish the existing stadium and build a new facility

Criteria for review of the models included overall cost, quality of finished stadium, ability to allow uninterrupted operation of the State Track Meet, and contribution to the overall quality of the athletic field layout and campus master plan.

Cost:

An estimate of overall cost of the two design models shows that refurbishing the existing stands is nearly as expensive as building new, in fact, there is less than a 5% difference between the two concepts. It is important to note that the estimate to refurbish is also less precise due to the potential for unknown costs. In particular, the issue of whether there will be active corrosion in the concrete structure even after it is resealed to protect it from water infiltration could result in extensive work to protect the structure.

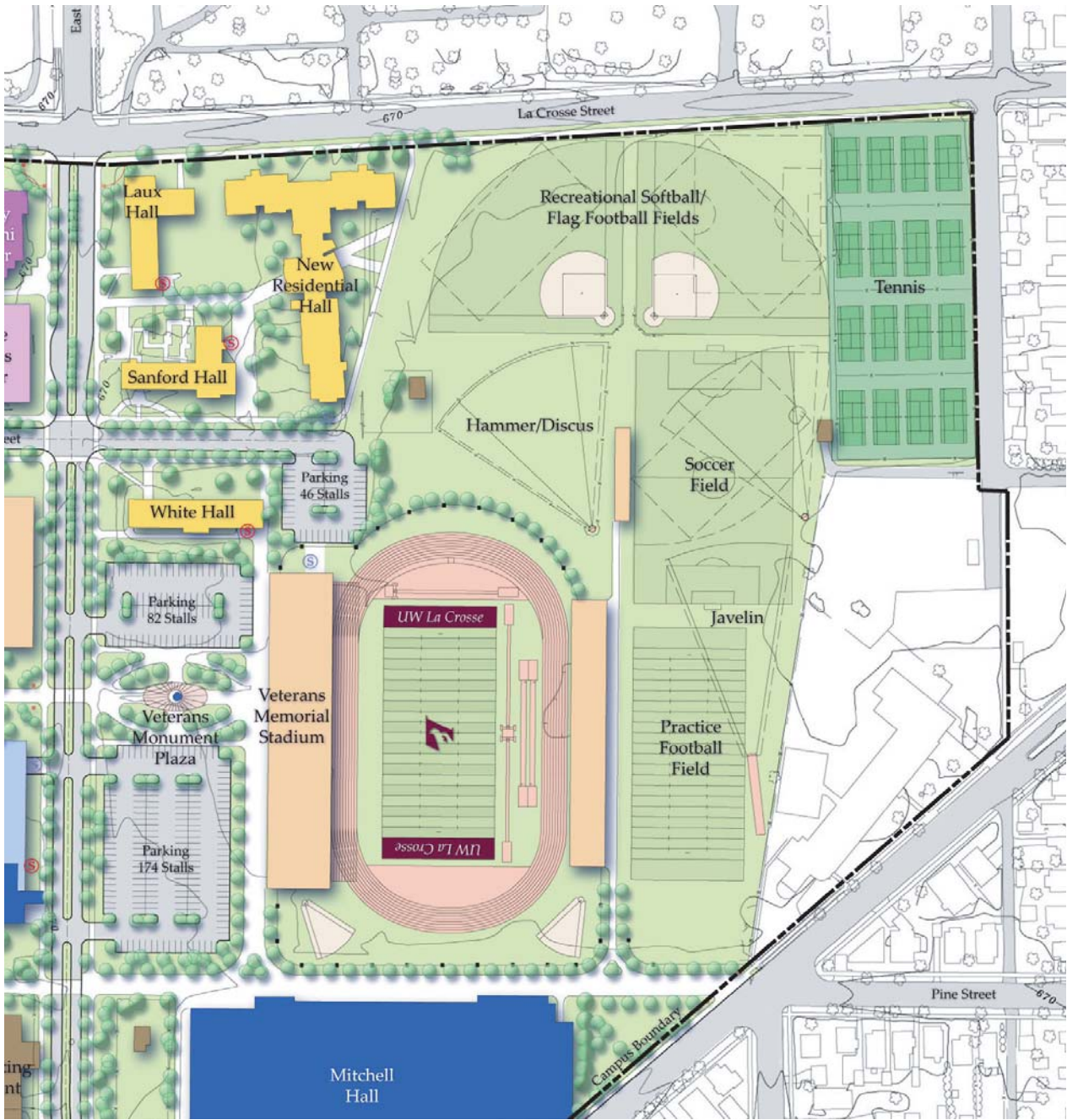
Schedule:

Both models can be phased to allow the continuous operation of the State Track meet.

Integration with the Master Plan:

The team studied options for the Master Plan which kept the stadium in its current location, and options which allowed it to move to other locations. The option which allows the most flexibility and available land area for placement of the athletic fields is the option which locates the stadium over the footprint of its current location.

Diagram C. – Main Campus Athletic Facilities Plan Recommendation



Conceptual illustration of the redeveloped stadium, athletic and recreation fields proposed looking northeast.



Conceptual illustration of the redeveloped stadium, athletic and recreation fields proposed looking northwest.



Conceptual illustration of the redeveloped stadium entry and Veterans Memorial Plaza.



B. Specific Facility Recommendations***Football***

Construct new competition and practice fields to include the following:

- It is recommended that as a part of a new stadium facility the football field be reconstructed as an uncrowned, internally drained synthetic turf field. This field should meet all NCAA and WIAA guidelines for competition fields. The type of turf recommended is a synthetic turf with rubber infill system
- New lighting is recommended to accommodate competition play and local television coverage
- Provide the football program with a competition synthetic turf field (also used for practice) and one natural turf practice field. The practice field is recommended to be crowned, irrigated, and be oriented in the same direction as the competition field.
- Provide consolidated storage areas that are integrated into the main stadium and/or the visitor side grandstand storage area
- The new stadium complex development will allow the potential for program space underneath the main stadium to accommodate football program support facilities such as locker rooms and/or halftime rooms, a film room, training rooms and weightlifting rooms. These facilities would be ideally located adjacent to practice and competition fields.

Track and Field

Construct a new track and related field event facilities to include the following:

- Construct a new 9-lane (48") lighted track with rubberized surface that meets all NCAA and WIAA guidelines for competition track facilities.
- Utilize a "broken back" style track layout to achieve a faster competition track and to afford ample infield space for field events
- Incorporate long jump, triple jump and pole vault within the infield on the east side of the football field
- Incorporate high jump into the South D-zone
- Provide consolidated storage areas that are integrated into the main stadium and/or the visitor side grandstand storage area
- Centrally locate the hammer throw, discus and javelin near the stadium complex area with permanent runways throwing pads and cages

- As applied to football, the new stadium complex development will allow the potential for program space underneath the main stadium to accommodate track and field program support facilities such as locker rooms and/or team meeting rooms, a film room, training rooms and weightlifting rooms. These facilities would be ideally located adjacent to the track and near field event areas.

Soccer

Construct new competition and practice fields to include the following:

- Provide a minimally crowned, irrigated and lighted 225' x 360' natural turf competition field that is oriented north to south.
- Provide an irrigated and lighted natural turf half-size practice field adjacent to the competition field.
- Provide spectator seating to accommodate approximately 300
- Install permanent press facilities, scorers table, scoreboard and a public address system. Team benches and scorers table are recommended to be located on the east side of the field, opposite spectator seating.
- Provide permanent storage space within the stadium visitor side grandstand storage area

Tennis

- Provide permanent spectator seating
- Develop a preventative maintenance program to extend the life of existing court surface
- If usage of courts continues to grow, consider adding lighting for practice and competition

Recreational Sports

The recreational sports program at UW-L is in need of facilities that are more permanent, more accessible and better able to be flexibly programmed day and night. It is recommended that the north end of the main campus athletic fields be dedicated for usage by all students through the recreational sports program and CEESHR. Following are recommendations for improvements to the facilities available for usage by recreational sports.

- Two permanent irrigated softball fields with outfield dimensions of 265' are recommended along with one softball field shared as an overlay with competition soccer. These play fields are also recommended to be used as an area for intramural flag football in the fall.
- After removal of parking, the northwestern field will accommodate a 265' outfield.
- As a means of extending play and offering the most flexibility in scheduling, lighting of this entire area is recommended to a level appropriate for intramural play.
- Use the synthetic turf field within the stadium outside of intercollegiate team practice times for recreational sports use.

Pedestrian and Vehicular Circulation

Pedestrians will continue to access the Veterans Memorial Stadium and athletic fields through two access points along the Pine Street corridor, however, as a part of the campus master plan, it is recommended that Pine Street be closed to traffic with the exception of team buses on game and meet days. This will allow a pedestrian corridor to be developed between Mitchell Hall and the stadium, increase student safety, and tie the two facilities together as a cohesive athletics and recreation complex. Pedestrians will also be able to access the stadium via the Veterans Monument plaza that is to become an extension of the proposed Badger Street pedestrian corridor. Pedestrians wishing to access the recreation fields at the north of the athletic complex will be allowed free movement between the recreation fields and the area of the new residence hall currently being planned. Vehicular access will be via the two parking lots adjacent to the Veterans Monument plaza, a new 46-car parking lot to the north of the new stadium or via the service/athlete access adjacent to the grandstand seating on the visitor's side of the new stadium.

Storage

Two main areas of storage are recommended for the main campus athletic complex. First, the area under the main stadium structure can be used for dry and secure storage, dependent upon the degree of programming that the university would like to include in this structure. Secondly, the visitor's side grandstands are intended to serve as a primary storage area with multiple garage-style bays to serve as assigned storage for individual sports and programs. This storage area is located alongside the paved athlete/service access way for ease of use.

Utilities

Utility adjustments and upgrades that will be required as a part of these improvements include:

- Adjustments utilities currently serving Veterans Memorial Stadium in order to serve the new stadium
- Adjustments to existing storm sewers surrounding the practice football fields in order to efficiently drain the fields within their proposed new orientations.
- New lighting for Track/Football and for the recreational fields and soccer field.

Diagram D. – North Campus Plan Recommendation



Baseball

Retain the existing competition field complex with the following improvements:

- Improve spectator seating to accommodate approximately 1500
- Provide permanent at-grade dugouts and a press box that includes permanent storage
- Provide better pedestrian access and dedicated vehicular parking for practice and competitions

Softball

Retain the existing competition field complex with the following improvements:

- Improve spectator seating to accommodate approximately 400
- Provide permanent at-grade better quality dugouts and a press box that includes permanent storage
- Provide better pedestrian access and dedicated vehicular parking for practice and competitions
- Shorten the distance to the outfield fence to a total of 200' from home plate

Recreational Sports

- Install two permanent softball fields with outfield dimensions of 200'
- Maintain a 250' x 300' multi-purpose field for recreational sports or CEESHR use
- Utilize the recommended 70-car parking lot for evening recreational use.
- Utilize a portion of the baseball or softball storage area built in conjunction with the grandstands and dugouts for recreational sports use.

Pedestrian and Vehicular Circulation

Pedestrians and vehicles will continue to access the north campus athletic fields as they do today, however, the addition of a new 70-car parking lot just north of the softball field will improve access for athletes, recreational sports participants and spectators. It is intended that this parking lot be gated and that access to parking be for those actively involved in games or events on the north campus.

Storage

Storage areas are recommended to be incorporated within the construction of the new dugouts and press boxes recommended for both the baseball and softball fields. Storage for recreational sports is recommended to be located within the storage area associated with the softball dugout/press box for ease of access to the proposed recreational fields.

Utilities

No modifications to existing utilities or new facilities are proposed at the north campus athletic fields.

Coate Field

- Relocate UW-L marching band practice to the synthetic turf football field within the redeveloped stadium
- Relocate intramural softball usage to the main campus fields and north campus to allow for recreational sports currently being played in Mitchell hall to use the outdoor fields at Coate Field.

Capital Costs for Development

A. Opinion of probable construction costs for facilities – Main Campus (2004 Dollars)

| | |
|---|--------------|
| Stadium | |
| 10,000 seat stadium split 7,500/2,500 home/ visitor | \$ 6,200,000 |
| Locker Rooms, Training Room, Classrooms | \$ 950,000 |
| Storage | \$ 250,000 |
| Wall of Fame, Trophy Room | \$ 200,000 |

Fields

| | |
|------------------------------------|---------------------|
| Synthetic Turf Football Field | \$ 750,000 |
| 9-Lane Track | \$ 600,000 |
| Soccer Field, bleachers/ press box | \$ 200,000 |
| Lights | \$ 500,000 |
| Irrigation | \$ 200,000 |
| Parking Lots | \$ 600,000 |
| Entry Plaza | \$ 500,000 |
| Fencing | \$ 200,000 |
| Site Amenities/ Landscape | \$ 200,000 |
| Subtotal | \$11,350,000 |

| | |
|--------------------------|---------------------|
| Contingency 12% | \$1,362,000 |
| DSF Fees 4% | \$ 454,000 |
| A/E Fees 8% | \$ 908,000 |
| Total Main Campus | \$14,074,000 |

B. Opinion of probable construction costs for facilities – North Campus (2004 Dollars)

| | |
|----------------------------|-------------------|
| Parking | \$ 140,000 |
| Softball/Baseball Upgrades | \$ 310,000 |
| Recreational Sports | \$ 50,000 |
| Subtotal | \$ 500,000 |

| | |
|---------------------------|------------------|
| Contingency 12% | \$ 60,000 |
| DSF Fees 4% | \$ 20,000 |
| A/E Fees 8% | \$ 40,000 |
| Total North Campus | \$620,000 |

Implementation and Phasing Plan

Critical to the implementation of the plan is the development of a phasing plan that allows the University to construct the new stadium and fields without interrupting the State Track Meet and with minimal disruption to intercollegiate team schedules. The Phasing Plan relies on the following chronological steps:

Phase I

Immediately following State Track Meet Year One: Demolish the existing stadium, track, football field, visitors bleachers and existing soccer field. Reconstruct the new track, football field and practice football field by September 15 of that year. For home football games that year, all spectators would be located on temporary bleachers on the visitor side of the field. During this year, competition soccer would utilize the north portion of the site for game play. During this time the new stadium construction would commence. Substantial completion (grandstands, press box and services) would be completed by June 1 of the year two in order to host the State track meet. Temporary seating would still be utilized on the visitor side of the track.

Phase II

Immediately following State Track Meet Year Two: Build the permanent visitor side seating and storage structure. Reconstruct all remaining competition, practice and recreation fields during the summer of year two. Also reconstruct the parking lots adjacent to the new stadium, Veterans Monument plaza and soccer seating.



APPENDIX C

Athletics Feasibility Study Meeting and Workshop Notes

| | |
|---|----|
| Athletic Feasibility Study-Kickoff Meeting Notes - February 24, 2004 | 38 |
| Athletics Recreation Survey Distributed to Coaches and Athletic Directors | 51 |
| UW-L External Athletic Facilities and Schedules of Use | 54 |
| Comparison of UW System School Stadiums | 56 |
| Intramural and Club Sport Outdoor Field Space Usage Descriptions and Diagrams | 57 |

UW La Crosse Athletics Feasibility Study

MEETING #1

Meeting Subject: Athletic Feasibility Study-Kickoff Meeting

Location: 125 Graff Main Hall

Meeting Date: 24 February 2004

Issue Date: March 1, 2004

Participants: DSF – Larry Earll
UW System – Maura Donnelly
UW La Crosse – Ron Lostetter
Matt Lewis
SGJIR – Kate Sullivan
Paul Wiese
Eric Bardenhagen

Prepared By: Eric Bardenhagen

DISCUSSION:

The purpose of the meeting was to confirm the scope of work and schedule, outline the format for meetings and discuss information needed from meetings with departments, coaches and staff.

The final document for this study was discussed. The campus stated that the document needs to have two functions; both as a technical document that will fit within the overall Campus Master Plan, and as a summary document that can be used by coaches and administration for the purposes of fund raising and recruitment. SG JJR stated that the technical portion of the study documentation will become an appendix to the Campus Master plan and a short executive summary (4-6 pages in color) that includes graphics, will serve as a fund raising piece. Hard copies (25) and electronic versions will be provided to the university.

DSF recommended that the project schedule be accelerated in order to get student and faculty input on the recommendations. Discussion of the project schedule was held over until more team members were present on Wednesday afternoon.

A general discussion of issues that would likely be raised by meeting participants and opportunities and constraints that are present. Discussion topics included:

- Parking will be a big issue. Both parking to service athletics facilities and existing and future non-athletic facilities. The initiative to disallow incoming freshmen from obtaining parking permits was passed by students. The effect of this change will only begin to be seen next fall.
- Athletics programs are not expected to expand at the varsity level. UW-L is not balanced in their male to female ratio of participation. Potential sports such as crew were mentioned. If program

expansions are indicated during upcoming meetings, these will be documented as future potential programs in the study documentation.

- Recreational sports will likely need to expand in either the number of participants or in the diversity of offerings. Recreational sports will need to play a major role in any plan put forward.
- Relationships between Recreational Sports and Athletics – currently both share many facilities. Coordination is handled by Mark Guthrie. Mark also serves as coordinator for exterior athletic facilities.
- Based on the university mission, academic programs are the top priority, followed by athletics and then recreational sports.
- Potential for off-site facilities – there is a 40+ac site available for soccer 2.5 miles away from campus. Any site not within easy walking distance of the campus, however, presents difficulties in maintenance, access and participation.
- Lighting will be an important consideration in order to allow for greater use of existing fields.
- The North Campus fields are not likely able to be expanded due to both ownership issues and their forested wetland characteristics
- Professional sports use of athletic facilities such as the past use by the New Orleans Saints, is not likely to re-emerge as most teams practice in their own facilities as a part of stadium agreements.
- Emerson School poses a potential opportunity or constraint.
 - R A referendum will go before voters in the fall that will included money for two new schools. Only after this referendum is passed and two new schools are built, would Emerson be able to be vacated.
 - R The building is marginally usable for the next 10 years.
 - R Due to condition of the building and lack of air conditioning, parts of the building are inappropriate for use as surge space.
 - R A scenario was discussed that used Emerson school for surge space, day care and offices in the short term and as greenspace for recreational and athletics use in the long term.
 - R Alternatives for the Emerson School property that will likely be shown include A) Building remains and greenspace to the north in the existing open area. B) Flexible use of the buildings in the short term with a long-term use as greenspace for athletics and recreation; and C) Buildings are razed and the entire site is utilized for recreation and athletics.
 - R It is possible that the school district could sell the property to a private developer, however, very limited uses would be palatable to the surrounding neighborhood and the university. Retirement housing was mentioned as one possible use.

Opportunities and constraints brainstorming

- The use of artificial turf and lighting open up many opportunities
- The potential to upgrade the track to an Olympic size in order to provide the opportunity to host Olympic trials.
- Seek to host the NCAA Division III championship meet
- Retain the State high school track meet. Seating is currently an issue, especially on the east side of the track.

-
- The current configuration for soccer is poor with respect to the absence of lighting and spectator stands which hinders the sport
 - The potential opportunity for endorsements and advertising
 - Additional new lighting will need to be designed very well in order to respect the surrounding neighborhood.
 - Stories to tell: The university wants to forward the idea of quality in all that it does, including athletic facilities and programs. Another story to tell is that of memorials such as the naming of Veterans Memorial Stadium in honor of war veterans.

MEETING #2

Meeting Subject: Athletic Feasibility Study
Physical Plant Staff that Maintains Facilities

Location: 125 Graff Main Hall

Meeting Date: 24 February 2004

Issue Date: March 1, 2004

Participants: DSF – Larry Earll
UW System – Maura Donnelly
UW La Crosse – Matt Lewis
Pete Bemis
Ken Hutschenreuter
SGJJR – Kate Sullivan
Paul Wiese
Eric Bardenhagen

Prepared By: Eric Bardenhagen

DISCUSSION:

The purpose of the meeting was to discuss the physical conditions of athletic facilities throughout campus, maintenance schedules and techniques and issues and opportunities seen by staff members. Following the meeting, physical plant staff led the team on a tour of the stadium facility.

Pete Bemis and his staff are responsible for the maintenance of all exterior areas on campus including athletic facilities. The biggest challenge his department faces is limited resources, both in personnel and fiscally, to maintain the campus grounds. The campus continues to grow its programs and each time this happens, new maintenance requirements result.

Discussions included the following:

The State track meet is always held in the first week of June and has been a great success. The university maintains the fields in excellent condition for this event.

Soils in the area are typically made up of a thin layer of topsoil followed by a subsoil of fine sand, allowing excellent drainage in most areas. The exception to this is the stadium and fields area that was once used as the County fair grounds. At some point, a heavy soil fill was added over the site that hinders the good drainage found in adjacent areas. A drainage inlet system is present in the current athletic fields, however due to field orientation changes, several inlets now fall within field boundaries. Pete Bemis will provide a map of this drainage system.

All of the athletic fields including Coate field are irrigated.

The north campus fields do periodically flood but have done so only once in the last 16 years. Seasonal rains, however do create wet and soggy conditions that on occasion prompt cancellations, especially on the western open field area.

The north campus area is built on filled land and subsidence has been a problem as the land settles. Maintenance staff periodically fills sinkholes and re-sods as necessary.

Perimeter fencing at the north campus athletic fields is needed to control out-of-bounds balls that are often lost in the marsh.

Use agreements with the City of La Crosse allow for the parks and recreation department to use both the north campus fields as well as the athletic fields outside the stadium from June 1 to August 15. During this time, athletics coordinates with the City to schedule practices, games and events.

Equipment storage is always a challenge. In the winter areas under the stadium are used, otherwise supplies and equipment are kept in the physical plant building on the north campus.

Coate field is highly used and, even with irrigation, needs constant maintenance to keep it in good condition. Coate field typically hosts band practice, men's rugby, women's rugby, men's lacrosse, intramural softball and ultimate Frisbee.

Drake field is not used for organized recreational sports or athletics usage. It is one of the last green spaces on campus left for informal student use. If it is to continue as an informal recreational field, irrigation will be needed to keep up with the demands on this area.

Veteran's Memorial Stadium – Artificial turf is generally accepted for the stadium and the demand created by the number of events held there (18-21 football games alone) requires artificial turf. The track was re-rubberized in 2003 and at the time of installation, it was determined that the overlay would be the last overlay possible before a completely new surface would be needed. Typically each new layer lasts a maximum of seven years.

State Track Meet – Event areas needed include two discus/hammer throws, two pole vault pits, two long jump/triple jump pits, two shot put areas, a javelin throw area and the track events within the stadium. Circulation of athletes is the biggest challenge during the event as is seating of spectators. Seating capacity is currently about 4200 (2800 in the stadium and 2000 on the east side). For the State track meet, 22 portable bleacher units are brought in to encircle the track and other events. Paid attendance in the previous years has been near 16,000 over the two-day meet. An estimate of the one-day attendance is 10,000 fans.

Tennis – The existing 16 tennis courts were originally owned by the City and then acquired by UW-L. The courts are relatively new, having been totally reconstructed 8-10 years ago and resurfaced again in the past few years. There is no spectator seating at the courts and the courts are not lit.

MEETING #3

Meeting Subject: Athletic Feasibility Study
College of Education, Exercise Sport Science, Health and Recreation
(CEESSHR)

Location: French Conference Room in Mitchell Hall

Meeting Date: 25 February 2004

Issue Date: March 1, 2004

Participants: DSF – Larry Earll
UW System – Maura Donnelly
UW-L – Matt Lewis
Ray Martinez
Sandy Price
Richard Mirkat
Pat DiRocco
Jeff Steffen
SGJIR – Bill Patek
Eric Bardenhagen

Prepared By: HGA- d'Andre Willis
Eric Bardenhagen

DISCUSSION:

The purpose of the meeting was to discuss the use of athletic facilities throughout campus by academic departments, the general needs of academic classes that utilize athletic fields, and trends that may affect future facilities needs. Issues and opportunities were discussed as well as benchmarking of facilities at peer institutions.

Use of facilities:

Therapeutic Recreation classes utilize the ropes course at north campus as well as many other areas throughout the campus. Typically when they need facilities such as the track for class use, they coordinate with Mark Guthrie. There are times when athletics is given priority and instructional use is turned down. For example, it would be impossible to offer a class at 6 pm on most of the fields or at the stadium.

7:45 am classes typically need to be held in the fieldhouse because of early morning irrigation that keeps the fields wet until mid-morning.

Other academic-related events include occasional research and testing done with athletes and events such as commencement.

Outdoor athletic facilities do play a role in recruitment, especially in relation to recreation-related majors.

The area just east of Wittich Hall is used by recreation classes and for special uses such as the campus Pow Wow. The field is not irrigated and as a result frequently becomes muddy due to over-use.

The fields at north campus can pose problems due to poor drainage during the spring when the fields are often unusable.

The ropes course is used primarily for instruction. Some areas are accessible, but more accessibility should be provided. The University of Washington has an accessible bouldering wall as a part of their facilities. Other ADA issues include access within the stadium and surrounding area. Synthetic turf would be a benefit for accessibility.

Future instructional elements could include in-line skating, biking disc golf, and cross-country skiing. A multi-purpose trail at the perimeter of the athletic fields would provide a great teaching opportunity and, connected across La Crosse Street to Myrick Park, could provide connections to the Marsh trails.

The existing tennis courts are used for instruction and are maintained suitably for use.

Lighting is not a major issue as most classes are held during daylight hours, though with lighting, options may become available, or daytime conflicts may be lessened.

It was suggested that by working with the City and other institutions new opportunities for space may be found. An example of this would include use of areas of Myrick Park for instructional use.

Future needs:

Potential classrooms, a biomechanical lab and a strength center within the stadium.

Need for dedicated storage facilities at the main campus athletic fields as well as on north campus to support classes.

Need for expanded north campus building facilities. The location of the facility serves instructional use well, but the teaching and storage space is limited.

MEETING #4

Meeting Subject: Athletic Feasibility Study
Athletics Coaches and Representatives

Location: Mitchell Hall Room 26

Meeting Date: 25 February 2004

Issue Date: March 1, 2004

Participants: DSF – Larry Earll
UW System – Maura Donnelly
UW-L – Matt Lewis
Vicki Schull
Paul Plinske
Richard Pein
Sheila Perkins
Petra Roter
Mark Guthrie
Larry Terry
Joe Woodhouse
Barbara Gibson
Tim Fader
Sara Burton

SGJIR – Bill Patek
Eric Bardenhagen

HGA- d'Andre Willis

Prepared By: Eric Bardenhagen

DISCUSSION:

The purpose of the meeting was to discuss the use of athletic facilities throughout campus by athletic teams. The needs of each varsity and club sport were discussed with respect to practice, competition and storage needs. Also discussed was the coordination that the teams currently engage in to accommodate the spaces used by each team. Issues and opportunities were discussed as well as benchmarking of facilities at peer institutions.

Stadium Area

The stadium hosts 50-70,000 visitors annually to the campus and community. The home side currently seats 2,934 and the visitor side 1,500. Portable bleachers are used for the state track meet. Total attendance for this event is 15,000 over two days, with 8-9,000 attending each day. As growth in attendance is anticipated, permanent seating for 10,000 would be ideal.

Current Deficiencies:

The current stadium has sightline problems to the outside lanes of the track due to the height from grade to the first row and the close proximity of the first row to the track. Larry feels the first row should be closer to grade, perhaps 5' above. There are crowd control issues for the state track meet when spectators rush to get the better seats.

Leaks and vermin are current problems in the stadium. Material stored there has been ruined in the past.

Bathrooms for the public and teams are in extremely poor condition.

Handicapped accessibility to the seating is provided through a single wheelchair lift that has severe maintenance issues. Access is therefore nearly non-functional. There is no HC access to the press box or the Chancellor's Box.

Vision for renovated or rebuilt stadium:

Existing facilities that could be seen as a benchmark are UW Stout. A lower end benchmark might be Eastern Illinois University.

The primary use of any built space within the stadium should be for locker rooms and game day support. Current storage under stadium needs to be provided or rebuilt elsewhere.

Artificial playing surface would allow expansion of tournaments and other events needing more seats.

The football game field is shared with two area high schools and is subject to overuse.

Seating for football and the state track meet is inadequate both in the quantity of seats and in the quality of those seats

Aquinas High School and Junior High uses the track for its track practice and meets. This leads to practice and scheduling conflicts that Mark Guthrie coordinates.

Synthetic turf is desired for football. A flat, uncrowned field with turf would greatly increase scheduling options and minimize maintenance.

Storage is an issue in and around the stadium. Many groups have need for storage in the area and not enough is available. What is available is not dry and in some cases not secure.

Capacity of no less than 5000 is needed. The maximum that would be needed is 10,000.

Seating on the east side needs to be upgraded and realistically restrooms should be provided.

ADA access is a problem for most areas in and around the stadium.

Dry, heated meeting rooms with restrooms for teams and officials are needed. Also concessions, public restrooms, a larger and more modern press box are needed.

Visiting team locker rooms could be located in the stadium the home locker room could be in Mitchell hall in order to take advantage of the proximity of training rooms, equipment storage etc.

The Quarterback Club meets in a tent near the Veterans Memorial before games. They could use a larger and more permanent structure.

Concessions are needed on both the east and west side of the field along with restroom facilities.

Softball

Vicki Schull and Paul Plinske raised several issues that affect the softball team related to their practice and competition fields on north campus. These include the following:

- Spectator seating is very limited and since the construction of the dugouts, seating has been moved farther down the baseline than is suitable for spectators to view games.
- The outfield fence is too far and too high. Moving the fence to be more in line with other conference facilities is needed.
- UW Whitewater was mentioned as a benchmark facility with its two-field complex that allows for tournaments to be played.
- Lights would definitely open up options for practice and playing opportunities, but not many of the conference institutions have lights.
- Parking can be an issue as most of the north campus parking is for physical plant and long-term residence hall parking. Players and spectators park along the street or in Myrick Park.
- A changing room, especially for visiting teams, is needed, along with a training room.
- Some of the backstop and baseline fences are beginning to curl at the bottom
- A bullpen on the visitor's side is needed instead of the current two bullpen system on the home field side.
- Drainage problems have been a problem in the area behind home plate. This is usually during the spring and access has been limited at times.

Soccer

Portable bleachers are used now and the games typically attract 150-250 fans. Spectators typically are on the west side of the field facing east. East side stands would be difficult due to sun exposure.

The Field is not lit and this is a limiting factor for play. Lighting the field for competition play would help.

Future seating for spectators would need to be between 600 and 1000

Soccer needs a dugout-style shelter for athletes during games
A better PA system and lighting is needed for games.

The standard for competition soccer is to play on natural turf. Synthetic turf, while usable in some situations, is rare.

Tennis

Tennis has no lights, no restrooms and no bleachers. These hinder the options for any spectators of tennis.

La Crosse parks and recreation uses the tennis courts during the summer months.

A small amount of storage is available for tennis, but a better quality, more permanent facility is needed

Benchmarking

Overall Athletic Facilities

Platteville and Stout have great sound and lighting systems. Carthage College has just constructed a major upgrade to their athletics facilities. Whitewater can be used as an example of their stadium, new field house and lighted practice fields.

Track

McAlester College can be looked to for its track facility, as can St. Olaf.

Football

Mount Union and St Johns College are good examples of excellent football facilities.

Tennis

Carthage College can be looked to as a benchmark facility.

Soccer

Wheaton College

Recruiting and the Overall Quality of Campus Facilities

In the past few years, several new facilities have been developed on campus including the Health Science Center, the Murphy Library addition, the Cleary Alumni Center and the Recreational Eagle Center. These have all been welcome additions to the campus and help in raising the overall image of UW-L and its recruiting efforts. No significant improvements, however, have been made to athletic facilities. Athletic facilities need to make a good first impression for recruiting efforts and in some cases they currently do not. Specifically, some participants noted that the stadium is an embarrassment when touring prospective students.

Parking

For conference football events, parking is usually not a problem if campus is quiet that weekend, but if other sporting or special events are going on, then parking can be an issue and fans park in the neighborhoods.

MEETING #5

Meeting Subject: Athletic Feasibility Study
Recreational Sports

Location: Mitchell Hall Room 26

Meeting Date: 25 February 2004

Issue Date: March 1, 2004

Participants: DSF – Larry Earll
UW System – Maura Donnelly
UW-L – Matt Lewis
Sue White
Nathan Barnhart
Gil Standridge

SGJIR – Bill Patek
Eric Bardenhagen

Prepared By: Eric Bardenhagen

DISCUSSION:

The purpose of the meeting was to discuss the use of athletic facilities throughout campus by the recreational sports department. Field space needs were discussed as well as event timing needs and physical field characteristics needed. Also discussed was the coordination that recreational sports currently engages in to accommodate the spaces also used by athletics.

Existing Uses

Fall-North Campus

Flag football
Club soccer-mens

Fall – Main Campus

Coate Field – Lacrosse-men
Ultimate Frisbee – coed
Rugby – men and women
Band

Spring – North Campus

Softball –men and women and coed (use two fields plus the softball field)

Spring – Main Campus

Softball –men and women and coed (use three fields on athletics fields and two at Coate field)

Lacrosse-men (Coate field)

Rugby – men and women (Coate field)

Issues and Opportunities

Softball outfields overlap at the north campus fields and Coate field

North campus fields are soggy in the spring and often events need to be cancelled

Due to multiple uses of fields, adverse wear can become an issue (odd bounces in softball for example due to divots etc.)

Coate field has no barrier to La Crosse Street and as a result, many balls make it across the street

North campus has limited drinking water for participants

Parking at north campus can be a problem and many participants park on the street or in the park.

The possibility of freezing an ice rink for hockey or broomball

Wish List

Lights on all fields in order to increase scheduling opportunities

Turf at Coate field would also help maintenance and scheduling difficulties

Electric service at Coate field

Drinking water at Coate Field and North campus

Benchmarking

Whitewater

Ohio State

Ohio University

UW Stout

UW - LACROSSE ATHLETIC and RECREATION FACILITY SURVEY
Distributed to Coaches and Athletic Directors
02/18/04

VISION

1. Describe the level of quality desired for each field/facility?
2. List facilities that you feel achieve or exceed a standard for UW-Lacrosse. Why?
3. What current or future events/activities are desired for UW-Lacrosse?
4. What messages should be communicated to users and visitors? History or heritage? Hall of Fame? Benefactors? Recruits?

USE

1. What sport(s)/activity(s) do you represent?
2. Who sets the rules/standards for your sport(s)/activity(s)?
3. Who uses the field/facility? How many individuals/teams? What level of quality?
4. Quantify current and desired fields/facilities, size and location.
5. What is the main purpose for the field/facility? Games/practices/recreation/education?
6. What time of day/week/month/year will the field/facility be used and for what duration?
7. What special events or activities should be planned for?

SURFACES and MATERIALS

1. For fields, prefer natural turf or synthetic turf?
2. Will the natural turf fields be irrigated? Will the synthetic turf fields be irrigated?
3. What is known about existing soil and subsurface conditions?
4. What type surface is preferred for running track ? Tennis? Infields and warning tracks? Jogging path?

ACCESS and AMENITIES

1. How do/will users and spectators access the field/facility? Is there parking nearby?
2. How many spectators currently and anticipated? Permanent seating or portable?
3. Sports lighting? Scoreboards? Sound system? Emergency telephone? Dugouts?
4. Drinking fountain? Concessions? Restrooms? Equipment storage? Flags?
5. Lockers/changing? Showers? Training/first aid? Coaches/officials rooms?

MAINTENANCE and OPERATIONS

1. What is the best maintained field/facility at UW-Lacrosse? Who maintains fields/facilities?
2. What are the capabilities of the maintenance staff? What other responsibilities do they have?
3. Describe maintenance equipment and condition.
4. Who preps the field/facility prior to each use?

UNIVERSITY OF WISCONSIN-LA CROSSE
INTERCOLLEGIATE ATHLETICS

EXTERNAL FACILITIES

VARSITY SPORTS MODULE (19 INTERCOLLEGIATE PROGRAMS)

Women's Sports (10): Volleyball, Cross Country, Basketball, Gymnastics, Swimming and Diving, Track and Field, Tennis, Soccer, Softball

Men's Sports (9): Football, Cross Country, Basketball, Swimming and Diving, Wrestling, Track and Field, Tennis, Baseball

OUTDOOR SPORTS PLAYING, PRACTICE SEASONS & LOCATIONS

| | | |
|-------------------|--------------------------|---------------------------|
| Football | August 15 – November 15 | Veterans Memorial Stadium |
| Soccer | August 15 – November 15 | East side of stadium |
| Athletic Training | August 15 – November 15 | Veterans Memorial Stadium |
| Officials | August 30 – November 15 | Veterans Memorial Stadium |
| Track and Field | March 25 – May 25 | Veterans Memorial Stadium |
| Athletic Training | March 25 – May 25 | Veterans Memorial Stadium |
| Baseball | September 5 – October 30 | North Campus |
| | March 25 – May 15 | North Campus |
| Softball | September 5 – October 30 | North Campus |
| | March 25 – May 15 | North Campus |

STORAGE NEEDS

Veterans Memorial Stadium:

| | |
|-----------------|---|
| Football | 10' x 22' = 220 Square Feet (currently) Could use 220 Square Feet at three locations under stadium No heat needed |
| Track and Field | 18' x 32' = 576 x 2 = 1,152 Square Feet (current top and bottom locations) Could use another 1,000 Square Feet for new high jump pit No heat needed, must be secure and free from rodents |

| | |
|--------|--|
| Soccer | 16' x 12' = 352 Square Feet (currently) No heat needed, size is sufficient, must be secure and free from rodents Storage under East side bleachers |
|--------|--|

| | |
|-------------------|--|
| Athletic Training | 29' x 52' = 1,508 Square Feet (currently) Heat would be important if locker room is in Stadium Need more outlets, plumbing, keep same size |
|-------------------|--|

| | |
|----------------|--|
| Officials Room | 12' x 13' = 156 Square Feet (currently) Heat would be nice, double the size |
|----------------|--|

North Campus (Baseball/Softball):

| | |
|----------|---|
| Baseball | 14' x 7' = 98 Square Feet (currently) Triple the size, no heating needed, must be secure and free from rodents |
|----------|---|

| | |
|----------|---|
| Softball | 12' x 8' = 96 Square Feet (currently) Triple the size, no heating needed, must be secure and free from rodents |
|----------|---|

| Campus | Seating Capacity | Type of Field | Facilities within the Stadium | Events Held in the Stadiums |
|---------------|-------------------------|--|---|--|
| Eau Claire | | City Facility | | |
| Green Bay | Bleachers Only | Natural-Soccer only | | |
| La Crosse | 4,349 | Natural | 2 half time team locker rooms, officials room temporary training room, two rest rooms , make shift concession area, | High Schools, HS track, WIAA outdoor track and field meet, State Track Meet, past special Olympics. |
| Milwaukee | No Seating | Natural Soccer Only | | |
| Madison | - | - | - | - |
| Oshkosh | 10,000 | Natural (Plans to go to synthetic and have both soccer and football on one field | Locker rooms, team, restrooms, concessions, coaches locker room, Athletic training office area, equipment area ticket stand | High School Football |
| Parkside | None | None | | |
| Platteville | 10,000 | Natural | Coaches/Officials locker room, restrooms, concession stand, team locker room, training room | High School Facility |
| River Falls | 2,000+- | Natural | Bleacher type with Press Box . Housing for mechanical | Used by KC Chiefs, HS home games |
| Stout | 4,500 | Synthetic | Restrooms, concessions, ticket booth, storage, press box, hospitality room and media deck | Drum & Bugle event, Stout camps and clinics, Stout athletic practices, HS Football games, WIAA playoffs, University Recreation events and community recreation events. |
| Stevens Point | City Facility | | | |
| Superior | No Facility | | | |
| Whitewater | 10,000 | Natural | Visitor & home locker rooms, softball lockers, concessions, M&W restrooms, | State Marching Band competition in October, Drum Corp International July, HS Football |

**UW-La Crosse
Recreational Sports**

Memo

To: Eric Bardenhagen
From: Sue White, Director Recreational Sports
Date: 3/2/2004
CC: Matt Lewis
Re: Outdoor field space – intramurals and club sports

Sue White

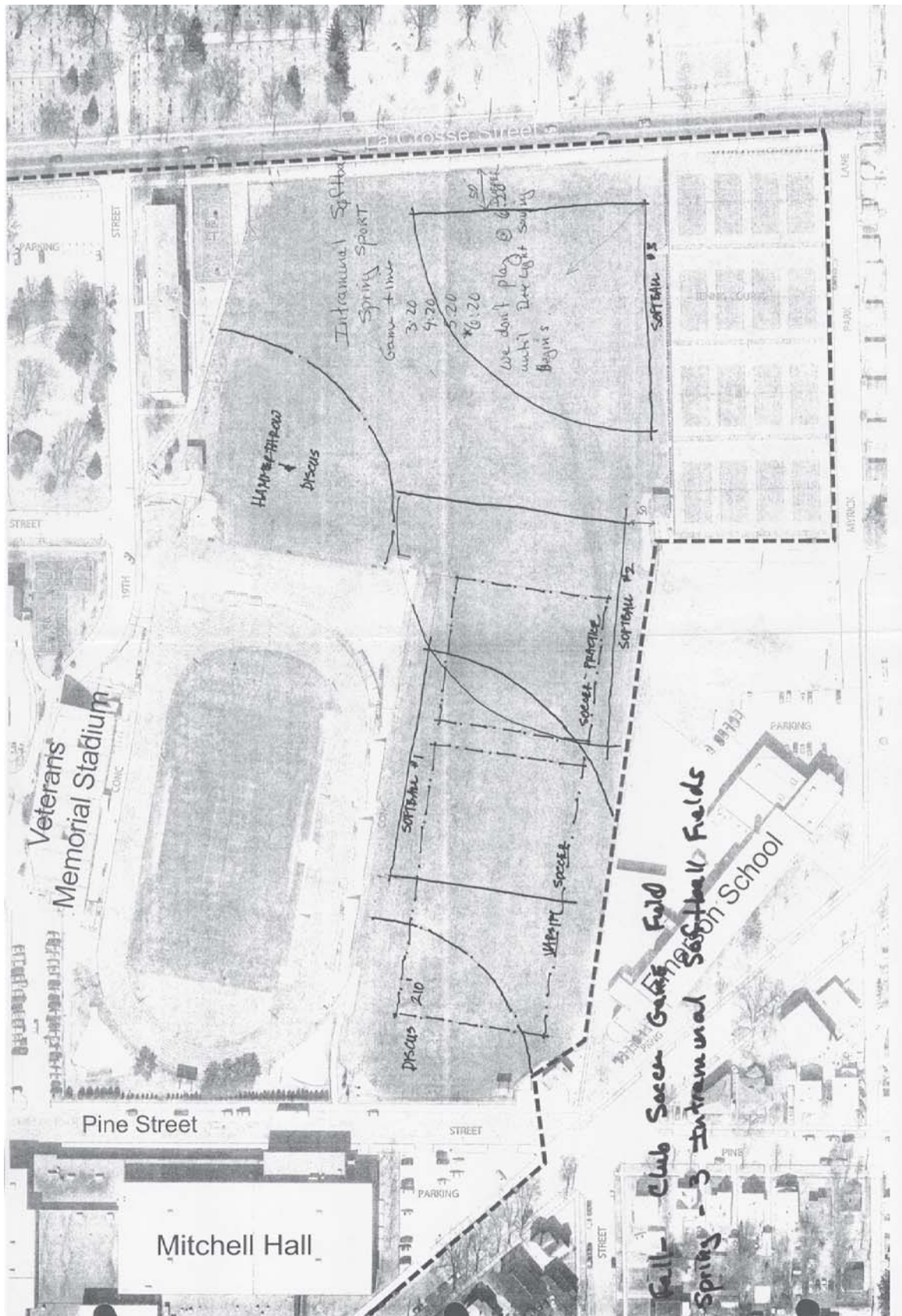


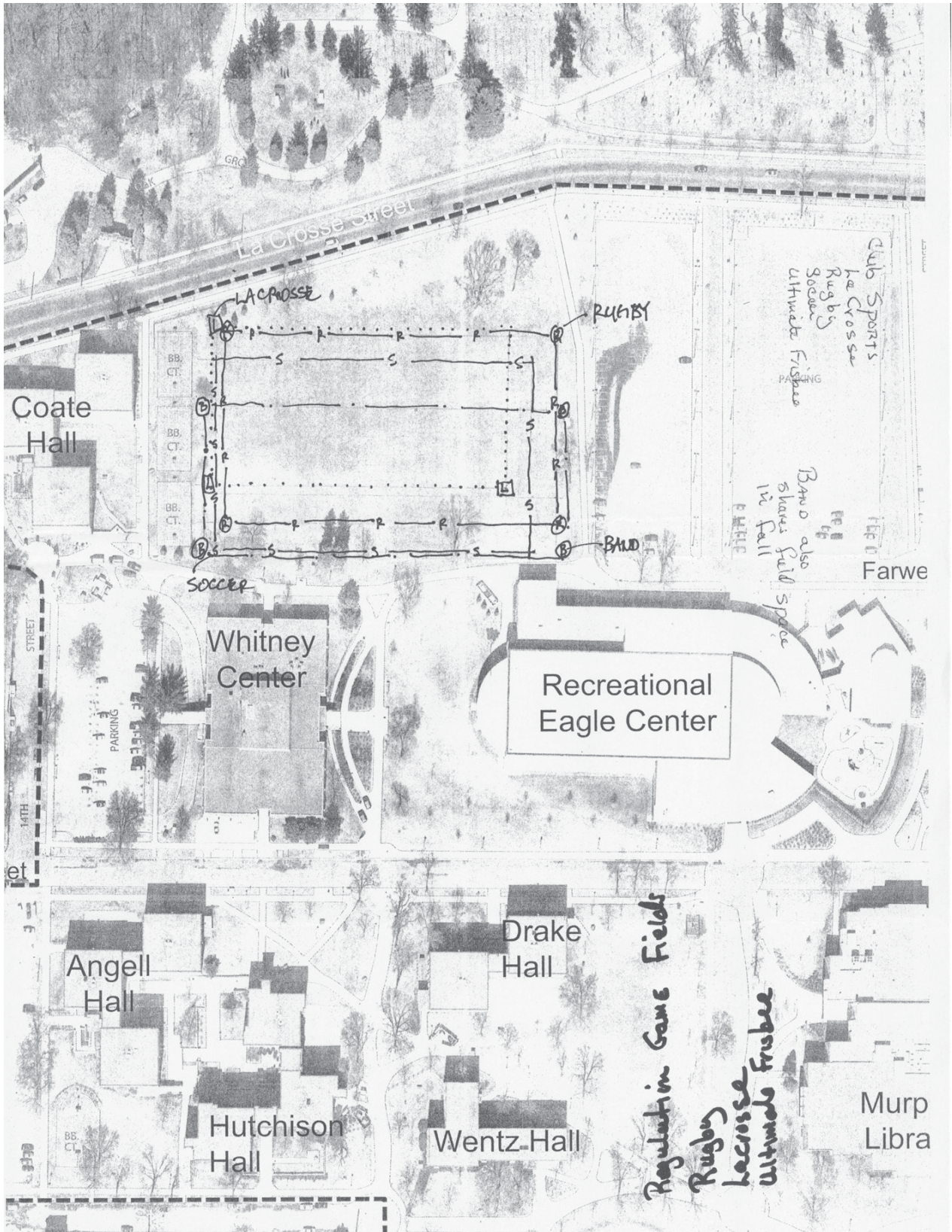
Enclosed you will find our field locations for intramural softball, flag football, kickball, club soccer, rugby (men's & women's), lacrosse, and ultimate frisbee. The field dimensions are drawn to regulation sizes. However, all of our playing fields are reduced to fit in the actual field space. I have indicated game and practice times for fall and spring semesters.

If you have any questions please contact me at 608-785-6529 or white.susa@uwlax.edu.

| User | Fields | Semester/League days/Times | Orientation |
|------------------|---|---|---------------|
| IM Flag Football | North Campus 3 fields (made to fit the area) Diagram shows actual regulation fields 280' x 120' | Fall Semester Game times 3:30, 4:20, 5:10 pm Monday-Thursday Sept-mid October | Preferred N-S |
| IM Softball | North Campus – 2 fields Coate – 2 fields Memorial – 3 fields Diagram shows regulation fields 275' *Fields made to fit (outfields overlap) | Spring Semester Game times: 3:20, 4:20, 5:20, 6:20 pm Monday - Thursday April 1 – May 10 *late games cannot start until after daylight savings time begins | Preferred S-E |
| IM Kickball | Memorial Fields 1 field | Fall Semester Game times: 12, 12:45, 1:00, 1:45, 2:30 3:15, 4:00, 4:45 pm Sundays Mid September – until November | Preferred S-E |
| Club Soccer | North Campus 1 field (made to fit behind women's softball field) | Fall Semester Practice space Until darkness and snow brings them inside | Preferred N-S |
| | Memorial Field | Game schedule dependent on field availability with intercollegiate soccer team Usually Saturdays and Sundays | Preferred N-S |

| User | Fields | Game times/league days | Orientation |
|--------------------------------|---|--|---------------|
| ● Club lacrosse | Coate Field Regulation field 345' x 216' | Fall Semester Practice times vary until darkness and snow brings them inside Share field space with rugby, ultimate Frisbee and men's/women's rugby and university band | Preferred N-S |
| Club lacrosse | Coate Field | Spring Semester Practice times M-W 3-5pm Share with Intramural softball IM softball games start at 5:20pm (Women's softball only due to short field) | Preferred N-S |
| Club Ruby (Men's & Women's) | Coate Field Regulation field 460' x 213' | Fall Semester Practice times vary until darkness and snow brings them inside Share field space with lacrosse and ultimate frisbee and university band | Preferred N-S |
| Club Ruby (Men's & Women's) | Coate Field | Spring Semester Practice times M-H 7pm until darkness Practice after intramural softball IM Softball game times 5:20 and 6:20 (Women's softball only due to short field) | Preferred N-S |
| ● Club Ultimate Frisbee | Coate Field | Fall Semester Practice times vary until darkness and snow brings them inside Share field space with lacrosse and men's and women's rugby and university band. | Preferred N-S |
| Club Ultimate Frisbee | Coate Field | Spring Semester Practice times T-Th 3-5pm Share with Intramural softball IM Softball games start at 5:20pm (Women's softball only due to short field) | Preferred N-S |









APPENDIX D

Master Plan Meeting and Workshop Notes

| | |
|---|----|
| Proposed Stakeholder Groups Meeting - October 14, 2003 | 64 |
| Campus Master Plan Listening Session Notes - November 18-19, 2003 | 66 |
| Master Planning Public Open House Notes and Summary | 92 |

MEETING NOTES

Meeting Subject: Proposed Stakeholder Groups

Location: UW - System

Meeting Date: 8 October 2003 – 9:00A.M.

Issue Date: 14 October 2003

Participants: DSF – Larry Earll
UW System – Jim Albers
UW La Crosse – Matt Lewis
SGJJR – Kate Sullivan, Bill Patek

Prepared By: Bill Patek

DISCUSSION:

Stakeholders: Meeting called to coordinate and clarify the Stakeholder Groups for the Master Plan workshop in November. Stakeholder list dated 9-25-03 was discussed as follows:

- Consultant should be added to Master Plan Steering Committee (MPSC) and Lewis will check with Lostetter to see if any other additions need to be made to the committee.
- Joint Physical Facilities Committee should either be added to the MPSC or to the list of constituents. Lewis will confirm with Lostetter as to the appropriate location of this committee.
- Involvement of the Chancellors staff (Provost, Vice Chancellors) was desired. Lewis will confirm the involvement of the Chancellor and his staff.
- Involvement of individual Community Associations / Groups (GENA, Livable Neighborhoods, Goosetown) was discussed, decision was made to invite the general public thru normal public meeting notice and not individual groups.
- Albers / Lewis listed additional groups to be invited as follows:
 1. Student body at large
 2. Student body from residence halls
 3. Foundation / Alumni Association
 4. Academic Staff Council
 5. Affirmative Action / Diversity
 6. Continuing Education / Extension
 7. Health Services

8. Information Technology
9. International Studies
10. Library
11. Veterans Affairs
12. WDOT

Workshops: Discussion ensued regarding the grouping of individual stakeholders and appropriate interview lengths. Patek to provide a revised workshop schedule for the stakeholder groups. Earll stated that the interviews should begin at 8A.M. the first day if needed to fit in all the groups.

Our summarization of this meeting is transcribed as above. Please notify the writer within five (5) business days of this transcription of any disagreement as the foregoing becomes part of the project record and is the basis upon which we will proceed.

Respectfully submitted by:

Bill Patek

Campus Master Plan Listening Sessions

On Tuesday and Wednesday November 18-19, 2003 listening sessions were conducted with numerous university groups as a means of involving the larger university community in the campus planning process and for gathering input relevant to the plan. Following are agendas for each listening session, questions posed to each of these groups and responses noted.

Overview of Major Topics Discussed During Campus Listening Sessions

1. Parking
 - Potential ramp
 - On/off-Campus parking conflicts
2. Wayfinding
 - Getting to Campus
 - Getting around Campus
 - ADA needs
 - Comprehensive Signage Plan
3. Internal Circulation (Roads)
 - Badger Street
 - Bus Service
4. Bicycles vs. Pedestrians vs. Service
 - Safety issues with multiple users of walks
 - Service vehicles need to access buildings
5. Stadium
 - Potential new stadium location
6. Campus Boundary
 - Emerson School
 - Municipal Pool
 - Neighborhoods to the West
7. Campus image/identity
 - Need to provide a distinctive edge to campus
 - Need to continually improve internal campus landscaping and create an overall landscape master plan
8. Open Space
 - Provide adequate recreation space for students
9. Town/Gown Relationships
 - A “Private School” mentality of many students and faculty
 - Student conduct that hinders positive relationships with neighborhoods and the City

Listening Session Invited Attendees, Questions and Notes

T-1

Tuesday November 18

10:00 – 11:30 A.M. Master Plan Steering Committee - Room 125, Graff Main Hall

- DSF (Earll)
- UW System (Albers)
- UWL (Lostetter, Lewis)
- SG JJR (Sullivan, Patek)

A. Review structure of the listening sessions.

- Reviewed questions and how process will take place.

B. Overview of Master Planning Process.

- Keep introductions short. Plan is to examine the function and form of all campus facilities.

C. Sensitive topics for the listening sessions – determine who should discuss or how to redirect?

- Emerson School – listen
- “No plans to expand into the neighborhood at this point in time.”
- Veteran’s Memorial Stadium “no comment”
- Gunderson/Lutheran Clinic at State Highway 16/90 potential site for non-standard education “outside the box population”

D. Identify opportunities/issues/constraints for Master Plan.

- Portions of the Campus Physical Development Plan were reviewed
- New residence hall
- New chiller
- Recreation Eagle Center weight training expansion
- Remove 3 dorms and replace with academic building
- Remodeling of academic buildings
- Cowley/Mitchell/Center for the Arts renovations/expansions

T-2

Tuesday November 18

12:15 – 1:30 Lunch Listening Session – Port O Call Lounge, Cartwright Center

- Faculty Senate
- Academic Staff Council
- All Employees

A. What is the best part of the UW – LaCrosse campus? Where do you usually take visitors?

- Health Science Center
- International flags plaza

- Residence halls, Rec Center
- A walk around the entire campus.
- Sundial
- Wing Technology Center building – interesting use of old space (shell of building) revived with new design and space use.
- Walk around the main part of campus then into the Rec and Mitchell Hall (Sports)

B. Where would you snap a photo for the postcard sent to: Prospective students?

Potential donors?

Faculty and Staff Recruits?

- Gazebo
- Outdoor Class Space
- Prospective students: Overview of Bluffs; Potential Donor: Clock Tower; Faculty/Staff Recruits: Wing Technology Bldg.
- Clock tower has had a lot of coverage, Veteran's memorial – statue, plaque and plantings – nice addition, respectful and dignified.
- Students: Wing computer Lab; Donors: Cleary Center; Faculty/staff – Child Care Center
- Sundial
- Clock tower
- Anything that would include a background with the bluffs and Grandad Bluff. Depends on specific audience. Ex. Sports Alumni – view from on top of the stadium.
- Quad area, MVAC
- Best part of Campus- its compactness. Where to take visitors? Library – special collections.

C..What is the first thing you would change about campus . . .

Function?

Form?

- Sense of arrival
- Confusion at “front” of Campus
- Clarify entrance and locate Welcome Center
- Signage
- Welcome Center needed, there is not a destination once you enter.
- Function: Strengthen our commitment to undergraduate, on-campus, experience especially teacher education in School of Education. Form: More signs around campus, on buildings, visible to drivers. Campus maps on kiosks.
- 1st to change – lighting, full cut-off on new lighting and for replacements/retrofitting.
- Need to do more to the exterior that communicates “tradition”, we’ve done some and can do more.
- Identify district areas and build on that: SW Corner – The Arts. Rec areas, Athletics, Students Services in one location. Need to better identify main entrance.
- Form: Develop a campus as a complete unit (long-term goal).
- Many of the older buildings need massive internal changes – ventilation, heating, space arrangements. Some exterior face lifts – keep traditional blended with new.
- More pedestrian areas less car areas.
- Balance between parking and green open space.
- Perimeter access vs. campus access

- Perimeter parking oriented for pedestrians.
- Find focus of campus and build on it.
- “Campus Close-ups” Outreach to high school juniors and seniors with parents
- Need to be more welcoming and make excellent first impression.
- Internal building wayfinding
- Accessibility as priority- universal access-not just wheelchairs (e.g. touch sings).
- WAYFINDING – Vehicular ORIENTATION – Pedestrian
- Kiosks, maps.
- Protective Services seen as “ugly” replace with Welcome Center, make visitor parking obvious.
- Orient and direct visitors to main buildings.
- LIBRARY/PLANITARIUM – open to public; where is it? Orient visitors using signage in reliable places that are always available.
- Use the “bus mall”
- Badger Street is an “Ugly Artery”, safety is a concern also. Is this an appropriate location for buses?, narrow the roadway and make it more attractive.
- Limited parking makes access difficult– barriers to using Bookstore, Cartwright Center, etc.
- Baseball/Softball-family Parking.
- Parking tickets in Physical Plant lot due to not having passes
- Beautify parking and orient toward the “front” of campus
- North of Rec building we need a good parking aesthetic look.
- Need more land, where can we expand? Acquire Emerson school if it becomes available, but not for Parking Ramp. How about a Welcome Center, consider neighborhood concerns.
- Need to be sensitive to neighbors.
- Potentially expand west “ugly houses.”
- Why need more land? Campus is nice and compact.
- Remote parking? Shuttles for staff/students?
- Landscaping – design more coherent landscaping. Use a Master Plan.
- Lighting, signage, artwork, lights with cutoffs to avoid pollution.
- Develop consistent building character
- Use a planned “Theme”
- Want design guidelines to articulate building ‘styles’ and building materials
- Access to Hixson Forests through Myrick Park – connection Recreational Linkage (Improve trail underpass at STH 16)
- Access/embrace bluff as a prime feature of the community. Become more conservation-focused.

T-3

Tuesday November 18 (continued)

1:45 – 3:00

Physical Plant and Landscape Services – Room 330, Cartwright Ctr

- Director of Facilities
- Campus Engineer
- Campus Landscape Architect
- IT Network Representative
- Telecommunications Representative

A. What do you like best about this campus?

- Compact
- Park-like
- Minimal pedestrian/vehicle conflicts
- Friendliness of campus community
- Building spacing generous not crowded
- Easy access from Downtown
- Sidewalk layout coherent
- Greenspace – character
- Good surroundings, recreation areas
- Clock tower/carillon – identity icon

B. What are you most proud of accomplishing at UW-LaCrosse?

- Underground utilities
- Softened grid – attractive landscape
- Excellent Programs, campus reputation
- Popular with students
- Being able to maintain campus in tight fiscal times
- Beautiful appearance, great focal points
- Great focal points – personality, sense of place
- Complementary architecture
- Fit in together, not outlandish – consistent
- Front of Campus
- Proud of upgrade of communications infrastructures, going wireless.
- Wireless antennae – trying for good placement. Not too prominent but good. Appearance work with physical plant.
- Fiber optic is starting, 25 access points (some exterior).

C. What are the most significant maintenance challenges on campus?

- 18' major sidewalks, 12' should become 18'
- Curb Cuts too narrow
- Trash – campus front loaded big dumpsters move in/out need to keep enough space. Typically completed by noon. Alternate trash and recycle each day. Completed Recycle 6days/week.
- Snow – Pick up tractor, loader by landscape services – sidewalk and interior roads. Contractor for parking lots.
- Storage – space at bike racks for snow storage.
- Sidewalk flow – good for students honoring origin/destination patterns.
- Secondary sidewalks too narrow, tracking mud, tight radii.
- No convenient service/delivery access at entries with elevators.
- Safety issues
- Maintenance repair issues
- ADA/safety conflict Ped/Veh hazard.

- Sidewalk “turnouts” – parking service vehicles
- Exterior Metals, oxidations, prefer black aluminum
- 6’ sidewalks undersized, 8-10’ required, remedial and good standard for future. Increase radii.
- Fire access – “square on square” Primary uses 7" thickness with reinforcing rods and secondary walks at 5" thickness
- “Extended arboretum concept” for Landscaping-used as a teaching tool
- Landscaping concept “nature plus”
- Irrigation, broadening diversity, accommodate multi-directional ped/veh
- Accommodating student activities

D. What would be the first thing on campus you would change?

- Keep Badger Street available – special events, enhance aesthetic
- Badger – Keep functions, but beautify
- Signage – consistent and appropriate size, building identification, boundaries, directional info, wayfinding.
- Campus Maps
- Vehicular/pedestrian conflicts
- Honor sequence
 - Approach – especially key public buildings
 - Arrival
 - Parking
 - Building destination
 - International signage
- Coordinate with Poblocki for future signs.
- No road adjacent to Municipal pool. Keep East Pine open – egress
- Campus entry points – sign 2nd Entries
- Gateway to Goosetown Memorial at Coate Hall
- Residential in the area of Pine and 15th St. – 8-12 Plex apartments are too dense
- East Ave. – Danger for bikes.
- Bike lanes on roads (not walks), like Badger, more commuter-friendly and integral with City. Well lighted.
- Evaluate potential areas for exclusion of bikes, mopeds.
- Blend contemporary/traditional/futuristic styles
- Compatible building additions “seamless” to avoid looking “tacked on”
- Design Vocabulary – Building materials, pick up detail/character of original buildings
- Use brick and Limestone materials
- Least favorite building is Wimberly.
- North Façade Health Services is an architectural statement rather than campus
- North façade Cartwright “Pile of Bricks”, rough no “front door” no detail.

T-4

Tuesday November 18 (continued)

3:15 – 4:30

Academic Colleges Administration – Room 340 Cartwright Center

- Business Administration (Dean)
- Liberal Studies (Dean)
- Health, Physical Education, Recreation and Teacher Ed (Interim Dean)
- Science and Allied Health (Dean)
- Continuing Ed and Extension (Director)
- Information Technology (Asst Vice Chancellor, CIO)
- Library (Director)
- Affirmative Action / Diversity (Asst to the Chancellor)
- Student Development and Academic Services (Dean)
- International Education (Director)
- General Studies (Director)
- Graduate Studies (Director)

A. What is your favorite place on campus?

- Mitchell Hall – exercise and basketball
- North of Wing Technology Center, “Lindner Forest”
- Gazebo
- Clock Tower

B. Where are you most likely to take a campus visitor, student/faculty recruit?

- Marsh, open space, Myrick Park
- MVAC
- Rec Center
- Graff Main Hall, Fine Arts Center
- Library – collections and vistas
- Health Science Center inside and out
- Wing Technology Center – especially students/family
- Cleary Alumni Center
- Types of Classrooms, Space, technology resources

C. What are you most likely to brag about to them? What are you most likely to avoid discussing with them?

BRAG

- Health Science Consortium
- Recreational Center
- Wing
- Cleary Alumni Center

- Views – Bluffs, Open Spaces, Marsh
- Stadium Vista – fall/may Convocation

AVOID

- Wilder Hall
- Parking Situation – too few on campus, convenience, distribution/proximity
- Labs that haven't been remodeled
- Wittich Hall

D. What would be the first thing you would change on campus?

- Pedestrians – avoid flow through parking lots.
- Honor flow and enhance pedestrian experience
- Badger entrance – provide additional gathering/relaxing spaces
- “Public” exterior art, improve East of Wittich.
- Setting/Architectural Design, campus landscape
- Good Examples – Clock Tower, Graff Main Hall, Traditions brick and limestone lintel.
- Entry signs need to be upgraded
- Don't use high-rise buildings, use “Human scale” Maintain bluff views.
- Keep “in scale” with campus.
- Establish a coherent signage system
- Safety lighting, avoid light pollution
- Change entries to campus to be more understandable and interesting
- Get rid of Protective Services building
- Get and admissions and welcome center building
- Access/vehicular flow at perimeter of campus

T-5

Tuesday November 18 (continued)

5:30-7:00

Evening Listening Session - Dining Room #2 , Whitney Center

- All Students
(Focus on Residence Hall)
- Student Government
- Student Associations

A. Where is your favorite place on campus?

- Clock Tower
- Outside
- The Rec Center and anywhere outside (trees/grass)
- Cartwright
- Whitney
- The small lawn and commons area in front of Cartwright and Graf (facing the street)

- The Rec center
- Outside (fields)
- Water feature at Main Hall
- Gazebo in the Lindner Forest

B. What brought you to UW-La Crosse?

- Beautiful, good academic athletics
- Bluffs, everything was close, but there were still green spaces
- Athletics, academics, and the view
- Academics, pretty bluffs, walking distance
- Bluffs
- Swimming
- The view and the program I was interested in.
- Great views of bluffs all over campus.
- It was far from home.
- The Campus was beautiful
- The education program
- A big scholarship
- Campus is beautiful, and so is the surrounding nature (bluffs, beach, etc.)

C. What would be the first thing about campus that you would change?

- New pool
- Decrease size of practice field for leisure activities
- Add a pool to the Rec Center
- More stylish buildings more “up-beat”
- Incorporate the bluffs more, “Green Buildings”, properly maintain current greenspaces.
- Parking – No freshmen bringing cars! Find a way to keep people from cutting across the grass.
- Parking
- Lights surrounding area
- Pool, bigger deck space, spectator area, more people would use.
- Incorporate the natural area more.
- MORE parking
- State/Campbell Street intersection is dangerous
- More bike racks at Whitney
- Separate bikes/pedestrians on campus (bike lanes)
- Badger Street is dangerous (bikes/pedestrians/buses)

D. Building/Campus Character

Good:

- Library
- Main Hall
- Wittich Hall

Bad:

- Center for the Arts

W-1

Wednesday November 19

8:00 – 9:30 A.M.

Athletics – Room 340 Cartwright Center

- Intercollegiate Athletics
- Recreational Sports
- School of Health, Physical Education and Recreation

A. What are you most proud of at UW-LaCrosse?

- Rec Center (7)
- Reputation for sports administration/fitness/rec programs
- Athletic prowess of campus sports
- Campus location
- Small close campus, not spread out
- Academic excellence
- The scenery/surrounding nature
- The quality of athletics and athletics facilities (2)
- The athletics teams and tradition
- Our ESS Department and the opportunities it provides
- The general atmosphere (cleanliness, etc)
- Not too big, not too small (population)
- Wing Technology Center (2)
- ESS/HPERTE
- We recruit and retain quality students
- Facilities tradition of excellence
- Sports and recreational programs

B. What is the first thing you would change on campus?

- Stadium: seats, field (sport turf), lighting.
- Soccer lighting
- Practice field lighting
- Parking, need more adjacent
- New Pool with diving facility with adequate deck space and viewing area, 8-lanes – inside.
- Stadium
- Softball/baseball areas, football area drainage

- North Fields area parking
 - C-7 Parking lot to Campus, the route past the Marsh and cemetery is spooky
 - Adventure course, lighting if possible
 - Tennis court –Light if possible. .
 - City Pool – need to acquire if possible
 - If the stadium is improved we could host other State sporting events
 - Improve crossing of West Ave. at Pine Street
-
- External signage
 - Become more events-oriented. On Mitchell? On La Crosse St? Not just Athletics other campus events, promotional, electronic and prominent. Electronic Kiosk, library lobby, Whitney, Weekly Email, On-Campus, Clock Tower.
 - Welcome Center – Need one!
 - Perimeter parking, eliminate internal roads.

C. What is your favorite part about UW-L campus?

- Big Eagle at Veteran’s Memorial and Stadium
- Bluffs, top of Stadium
- Clock tower
- Moon bluffs
-
- Main Hall, attention to traditional detail
- Activities
- Positive, proud alumni
- Rec Center.
- Students! friendly and welcoming.

D. Building/campus character

Good:

- Main Hall
- Wing Technology Center

Bad:

- Mitchell Hall
- Wimberly
- Cowley Hall

W-2

Wednesday November 19 (continued)

9:45 – 10:45

Student Services (Administrative) – Room 342 Cartwright Center

- Admissions
- Records and Registration
- Financial Aid

A. Identify any campus planning issues related to student services.

- Recruitment – heard positive feedback about campus. Improved entrances – good, keep going!
- Pine Street to Cartwright/Graff Main Hall, improve aesthetic. Use buffers to hide ugly views
- Direct to Hwy 16, exit 5 – come in from N. La Crosse St.
- Admissions/records need to be adjacent to one another
- Financial aid – more of and electronic system is needed.
- It would be good if housing were closer, need disability resource services, for “One Stop” support
- Want Visitor Center/Welcome Center
 - Serve up to 40 Students with Families, with High Tech rooms – presentations
 - Attract high-quality students.
- Wayfinding, signage, campus maps, directional/info/event
- Buildings – Wing Technology, Cowley – New dramatic facility needed; Murphy – Traditional/excellence; Morris – Old, well maintained; Main – Traditional/academic; also Library
- Need short-term parking for records/registration
- Lighting to South Parking south or State to North Parking
- Avoid: Wimberly, Whitney, Courtyards not well used, Protective Services is “ugly”
- Pine St. Crosswalk. State St. concentrate crossing at 17th and Campbell
- Lighting and Banners along La Crosse Street are great
- Screen Parking 4th to 21st.

B. Where do you take visitors, when they come to UW-L campus?

- Cartwright Center
- Rec Center – Very impressive to students
- Mitchell Hall
- Classrooms, Wimberly Hall, Health Sciences is too far,
- Take visitors on a 1-hour tour.
- Library
- Residential Halls
- Center for Arts
- Lindner Forest – Needs path repair, too muddy
- Gazebo
- Point our Grandad’s Bluff, Marsh, and Hixon Forest

- Fireplace
- Meeting spaces
- Information desk
- Great Hall
- Contains Admissions
- OK to still have Protective Services? Yes.
- SW corner, 17th and State, Lutheran Campus Ministry with Coffeeshop

Good:

- Bad:

- W-3

11:00 – 11:45 Lunch Listening Session - Ward Room, Cartwright Center
-All Employees

- Low income students, day care
- Cartwright Center
- Health Sciences students
- Public orientation: Center for Arts, Cartwright, Mitchell Hall, Health Science Center
- Intermingled campus, small community feel. Taking visitors to Center for Fine Arts
- Cleary Alumni Center, Mitchell Hall (facilities)
- Day Care Center, Archeology Lab, Cadaver Lab
- The layout is very beautiful especially in Spring and Summer

B. Where would you snap a photo for the postcard sent to . . . Prospective students?

Potential donors?

Faculty and Staff Recruits?

- Self-sufficiency program class (prepare low-income students for college)
- Clock tower with Library in background
- Photos of the most interaction between students and faculty and staff
- Cleary Alumni Center. Just about anywhere on campus would be great. I have had students tell me as soon as they say and visited the campus they fell in love with the physical aspects of the campus.

C. What is the first thing you would change about campus?

- Need family-oriented student housing
- Improve bike facilities
- Improve entry image
- Need a Welcome Center
- Remove Coke machine at Protective Services
- Need a parking ramp and transportation hub
- Fix infrastructure (heating, windows, doors etc.)
- Need to coordinate maintenance
- Better wayfinding
- Parking and easy routes to access it
- More user-friendly Center for the Arts (ADA)
- More focus on the real users of facilities
- Improved bike routes
- Work towards a coherent architectural character
- Campus not particularly beautiful or coherent. Uninspiring, wants a Frank Gehry
- Main, Wittich, Morris, not most functional.
- Health Science
- Library, not great functionally
- Think more about getting perspective, scale
- Visitor orientation, parking, front/back
- “Where’s campus” not just signage.
- Not visitor friendly entry, especially Center for Arts, upgrade entry
- VISITOR FRIENDLY, paradigm shift
- Better care of landscape, “needs to look good!”
- Lawns, not in good condition-improve
- Adjacent neighborhoods, student “transitional zone” “trashy appearance, especially southwest area.
- Improve Town/campus relationship, parking, litter, noise, not enough lighting
- More Parking
- Better vehicle/transportation systems including: less car parking on surrounding streets, much better bicycle parking facilities, More peripheral auto park facilities, more green space on campus
- No dorms for non-traditional students with children, (low income students from the community) or (masters degree students)

- Take out street south of Wimberly Hall
- Fix crumbly infrastructure, the stuff no one sees
- Better and more bike Lanes
- Bike/Pedestrian safety, perimeter and campus interior
- Covered and secure bike parking
- Strongly encourage alternative transportation
- Improve entry, image, orientation
- Welcome Center
- Remove outside Coke machine at Protective Services.
- Transportation hub and parking ramp.
- Fix infrastructure, maintenance, windows, doors, heating, plumbing
- Coordinated maintenance
- Wayfinding, orientation maps, kiosks
- Improve overall campus landscape
- Improve bicycle/pedestrian safety
- Clean up off-campus housing
- Improve perimeter treatments

F. Building/campus character

Good:

- Main Hall
- Wittich Hall
- Morris Hall
- Health Science Center

Bad:

Murphy Library

W-4

Wednesday November 19 (continued)

12:00 – 1:00 P.M. Lunch Listening Session – Room 259, Cartwright Center

- All Students (Focus on Students at Large)
- Student Government
- Student Associations

No participants attended this scheduled meeting

W-5

Wednesday November 19 (continued)

1:15 – 2:45 Student Services (Programmatic) – Room 326 Cartwright Center

- Disability Resource Services
- Counseling
- Career Services
- Health Services
- Student Life

- Multicultural Student Services
- Upward Bound
- Child Care Center
- Academic Discovery Lab
- Student Support Services

A. What are you most proud of at the University of Wisconsin – LaCrosse?

- There is an ethos of care for students and their well-being
- Most proud of the success of our graduates after they graduate and move on to career or further education
- We have a beautiful campus, very aesthetically pleasing
- The success the UW-L seems to consistently have in many areas
- Community and dedication (and ethic) of the staff.
- Photo: East Ave, Main, Cartwright Circle, Clock Tower, Link tie UW-L to Bluffs, Gazebo – memorial to Student/Staff – passed away while at UW-L

B. Round robin – Briefly characterize the issues your department/office faces.

- Student orientation/safety/security: Seek to centralize student services, referrals between student – responsive
- Lighting – provide a psychological environment of safety
- Continuously promote a very active campus, rec sports
- Career Track, professional development, off-campus interaction with Employers.
- Outreach is tough from Wilder Hall, for visitor wayfinding
- Utilization of Cartwright Center
- Improve directional signage to Public Buildings
- Career/academic advising “developmental advising”, referrals between programs, improve wayfinding and building identification.
- Recreation may affect child care play program
- Visiting resources – tough wayfinding, tough visitor parking
- Asian is the largest minority, need more recruitment of other minorities
- Multi-cultural and disadvantage/1st generation college students, precollegiate focus, retention – strong focus, affinity with Residence Life and Student government activities

C. What would be the first thing that you would change on campus?

- Honoring Native American Culture-”Pogue” Native American Olympic Sprinter,
- Public Art
- Physical plant parking all over, disruptive to disabled, accommodate provisions
- Design guidelines: “park-like”, “traditional”, to Graff Main, brick character is good
- Beautify campus, enrich grounds and improve lawns.
- Litter/cigarette butts, etiquette/educate students and faculty
- Trails, muddy circulation

- Freshmen – limit parking
- Reduce waste
- Encourage daylighting
- Evaluate use of LEED criteria
- Bus Pass – ridership, Thurs/Friday downtown shuttle, broadening patterns of use
- 50 “green” bikes
- Parking and bicycling accessibility
- Bicycle etiquette, strong safety concern
- Culturally reflect in building treatments, “someone of color has been here before” Native American, Asian, African American, disabled, etc.
 - Environmentally sensitive native species.
 - Archaeological considerations, MVAC?
 - Engage Native Americans in planning process for new buildings.
- Stadium accessibility
- Upgrade around library
- Disabilities – congregation
- Upward bound – Murphy
- Tough wayfinding, signage needs to be on all sides of buildings
- ID programs within buildings – more maps
- Braille signage, ADA compliance
- Accessibility – ADA. Not always at the “main” door.
- Keeping elevators operable
- Seek proximity and synergy
- Shared resource, people/physical

G. Building/campus character

Good:

- Main Hall
- Wittich Hall
- Clock tower
- Veteran’s Memorial

W-6

Wednesday November 19 (continued)

3:30 – 4:30

City / County / State – Room 337, Cartwright Center

- Elected Officials
- City Planning
- Department of Public Works
- City Police and Fire Dept
- City Engineering
- City Inspections
- City Parks & Recreation
- City Municipal Transit

- County Representative
- La Crosse School District
- WisDOT

A. Identify community challenges/issues that the City or your agencies are facing together.

- Wayfinding and addressing, visitors and emergency response
- Signs visible at night
- Noise, litter, vandalism, disorderly conduct – Bar related.
- West Ave. WisDOT, will jeopardize MTU plans. West Ave. crossing problem
 - Raised median, traffic control solution, expanded width?
 - Traffic “guard” better gaps.
- Pool within campus boundary, show as a future campus development
- Emerson School- could be a neighborhood issue
- Vacation of roads, Pine Street?
- Easements, utilities and relocations
- Parking Ramp?
- State Track Meet, hospitality Industry Boom, attract more events – food.
- Densifying – using 6-plex and 8-plex housing
- Identify off-site parking opportunities, sharing mall parking? Super Walmart, to Casino Lots.
- Traffic, parking, budgets
- Building and Street ID, dispatch response.
- Entry Gateway to UW-L and neighborhood
- Lighting, visibility, traffic (patterns) (interactions with pedestrians)
- Traffic parking budgets
- Wayfinding
- Addresses (not always Street Number related)
- Beauty, trash, litter.
- Solid neighborhoods
- Where is main entrance to Campus?
- Intensification and mixing of land uses
- Improvement of urban design, pedestrian amenities, signage, visual clutter
- Neighborhood conservation
- Maintenance and enhancement of housing stock adjacent to institutions.

B. Share idea/opportunities you have that could influence the University of Wisconsin – LaCrosse Campus Master Plan.

- DOT planned changes to West Avenue.
 - R raised median and expanded width
 - R crossing problems and speeding problems
 - R the only turn towards campus would be at Main, State and La Crosse Streets
 - R will affect bus traffic on Badger
 - R
- Incorporate pool abandonment into plan

- Take new roads into account when planning new buildings
- Parking ramp
- The problem of parking in neighborhoods
- The State track meet is a good thing and more events like this should be sought
- Off-site campus housing – not enough parking – City requires 1.5 spaces per unit
- No staffing to enforce parking on streets
- Keep neighborhoods in mind when designing buildings
- Finish Badger Street

W-7

Wednesday November 19 (continued)

5:30 – 7:30

Evening Listening Session - Valhalla B, Cartwright Center

- Community at large
- All Employees
- (open-house format)

A. Where is your favorite place on campus?

- I enjoy most of immediate campus, the green space with the grounds by Drake Hall and Coate Hall.

B. Identify challenges/issues that the community and UW-La Crosse are facing together.

- La Crosse property that is taxable is being eaten up by tax-exempt organizations which in turn reduces monies available for institutes such as UW-L.
- Housing Conditions: absentee landlords allowing property to become rundown. • Obviously the community and campus do not have much room to grow. The challenge lies in using the available space wisely.

C. Why do you enjoy living near campus?

- Convenience of location: near marsh/bluffs/etc., sense of youth/vitality around UW-L.

D. Other issues.

- I would like to see campus become more isolated with regard to traffic. For example have less roads through campus and open parking lots to roads outside of campus. Encourage more efficiency housing and residence halls. Utilize vertical limits within the aesthetics of the City and University.
- Go up (more stories added) vs. spreading out. Could existing residence halls have one or more floors added to accommodate more students on campus? Same question for educationally related buildings.
- Car-focused mentality of students
- No parking for visitors in neighborhoods
- Transition of homes to rental properties
- Concern about loss of neighborhood feel

Th-1

Thursday November 20

8:00 – 8:45 A.M. Foundation – Room 263 Cartwright Center

- Foundation
- Alumni Association

Overview of functions

- Alumni relations
- Houses UW-L Foundations
- Building and meeting rooms are often rented for special events
- Serve as a first point of contact for visitors seeking information, though they are not set up for that purpose

A. What is your favorite place on campus? Where are you most likely to take a campus visitor, student/faculty recruit?

- The clock tower
- The Alumni Center

C. What are you most likely to brag about to them? What are you most likely to avoid discussing with them?

Brag:

- Student and staff quality
- Warm and friendly atmosphere

Other Issues:

- Alumni that can't get their kids in (affects giving)
- Second place to Madison
- Admissions policies that are geographic – local kids aren't getting in
- Need more diversity – regional, national, international
- Trying to avoid an elitist tone

D. What would be the first thing you would change on campus?

- Improved landscape has helped a lot
- Center for the Arts – improve outreach, take donors there and provide entertainment
- Utilize the upcoming capital campaign for targeted strategic projects (examples include endowed chairs or renovation to the Center for the Arts)
- Develop a Welcome Center
 - R Host weekend guests and parents

- R Include a front atrium reception area
- Provide a better campus identity
 - R Currently difficult to distinguish between campus and surrounding neighborhoods
 - R Utilize better edge treatments
 - R Differentiate campus from the surrounding neighborhoods
 - R Develop an overall campus landscape plan that will create a unified theme to campus

Th-2

Thursday November 20 (continued)

9:00 – 10:30

Residence Life – Room 326 Cartwright Center

- Residence Life
- Student Activities Centers

A. What are you most proud of at the University of Wisconsin – LaCrosse?

- The dedicated staff, students and faculty at this campus.
- Recent recognition of the Business/Accounting program at UW-L.
- Natural beauty of the campus, i.e. Grand Dad Bluff.
- The students
- Beautiful, friendly campus
- The Clock tower is a great symbol of the campus; the heart of UW-L as it were.
- Friendliness, compact nature, accessibility of Campus.
- Programs: academic reputation, represented by the student body.
- Physical: The size of the campus gives one the feeling that he/she is an integral part of the community.
- The “green”, the cleanliness – when it is clean – the friendliness, the feeling of belonging, the camaraderie of my fellow employees, the student leaders.
- Good accredited programs.
- The Residence Life program
- Quality residential halls/buildings
- Well-maintained buildings.

B. Round robin – Briefly characterize your program/services and facilities.

RESLIFE

2900 Students – Residence Halls

95% of 1st year students live in residence halls

Acclimate students to UW-L

University Living

Facilities 35 years old mostly

-Double loaded – 2 per room

-New Suite Style

Seen as providing outstanding services

STUDENT ACTIVITIES AND SERVICES

2800+900=3,700 total students served

Textbooks, dining and Bookstore

Cartwright and Whitney Centers

C. What would be the first thing that you would change on campus?

- Parking – more, ramp.
- Gathering Spaces – inside and out
- More centralized student center, enlarge to include all programs
- Diversity – focused
- Counseling and testing
- Bike lanes – how do we deal with Bikes effectively
- Develop a total student service building
- Need a better sense of the main entry to campus
 - Main Hall appears to be an entrance but it is not very accessible
- Protective services building – raze
- Badger St. - Improve appearance
- Speeders – maintenance vehicles, buses, bicycles
- Willingness to park and bus from a remote location if it is fast and efficient
- For MTU to restructure routes
- North of Library need sidewalk
- Keep FIRE ACCESS in mind.
- Always strive for a campus that is welcoming/Inclusive
- Better accommodation of people of all races, abilities and orientations on campus
- Functionality – the Rec Center is a good example of interior function.
- Acquire the City pool and change the use. Add more performing arts
- Acquire Emerson school
- Add campus art
- Improve the “pit” at Angell Hall
- Need a Welcome Center
- Landscape, lawn, location of walkways – design vs. actual, fences, shrubs.
- Reduce demand for parking on campus
- Off site parking with bus, eliminate freshman cars. (drive them off campus, or don’t bring)
- 5-6 blocks is the maximum distance students are willing to walk
- Need short term parking, loading/unloading.
- Perception vs. effectiveness of fencing
- West of Rec Center – make greenspace usable and welcoming (terracing potentially)
- Parking lot edge treatments
- Build upon good examples of buildings. Main Hall is collegiate and gives a sense of tradition. Cleary Alumni Center – good image from the road, more inviting. Rec – blue/green roofs are distinctive.
- Avoid flat roofs – new library addition is good as it uses different rooflines.

- Functionality of interior/exterior spaces in buildings.
- Blend old and new styles of buildings
- Avoid need of circumnavigating campus to get oriented and get in
- Safety at State and Campbell – dashing across, Emerson school student safety along Campbell
- Signage/Wayfinding/Maps: getting to Campus, Vehicle and Pedestrian, Directions to Parking
- Building Style: Architecture – Collegiate feel, lights, some UW-L signs, stadium, pedestrian mall

D. Building/campus character

Good:

- Main Hall
- Cleary Alumni Center
- Rec Center
- Wing Technology Center

Bad:

- Wittich Hall
- Center for the ArtsTh-3

Thursday November 20 (continued)

10:45 – 11:45

Protective Services / Parking – Room 263 Cartwright Center

- Director Protective Services
- Director of Parking

A. Identify safety and security issues/concerns about campus

- Card swipe access for all buildings
- No more call boxes needed

B. Share parking issues/concerns (e.g. total availability, distribution, on-street, neighborhood-related, etc.)

Parking:

- 30 year issue – high demand versus no growth in supply
- Neighborhood relations are getting worse
- Freshmen are coming to campus with a car-focused mentality
- Parking permits are on a lottery for freshmen and sophomores. Older students in dorms get an automatic space
- 766 spaces available for residence halls (–100 for staff – 15 for hall directors) total 651
- Currently meeting about 1/3 of the applications for parking
- Commuter needs are not being met
- Using web-based Power Park (same as Madison)
- If no freshmen could bring cars there would be a trade-off as more parking would take place in neighborhoods

- A possible parking ramp raises the question of whether students would pay the increased cost (estimated \$180-\$480)
- 600 of 1000 staff pay for parking
- There is currently no dialogue with City police

Distribution

- North edge and east edges of campus have the most parking
- Students want parking to be as close as possible to their dorm
- Employees want to be next to their building
- Snow can't be stored in the north lots anymore
- Cowley lot is in the worst condition (0-5 year life span left)

Big ideas

- Expand Rec Center lot to the west
- Parking in Myrick Park – City turned down idea
- Buy-back programs
- Create more surface parking
- Parking ramp location at stadium lot or athletic fields

Thursday November 20 (continued)

12:00 – 12:30 P.M. Chancellors Staff – Room 125, Graff Main Hall

-Vice Chancellor
-Campus Planner

Chancellor's input

- Harring Field at Veteran's Memorial Stadium is a sensitive issue
- Emerson School – show only as a dashed line and leave building in place for the Master Plan
- Put forth a vision of quality (La Crosse has the second highest ACT in the system)
- Continue to be very selective and increase diversity
- Grow non-resident and international student population
- Need to provide a high-quality, aesthetically pleasing campus environment that promotes the mission of UW-L
- La Crosse is thought of as a “private” institution in many ways and competes with private schools for students. Facilities need to reflect this.
- Serve the local community more effectively

Images for the future

- Carleton College, University of St. Thomas
- Provide an architectural cohesiveness
- Provide adequate green space for student learning
- Provide easy wayfinding around campus; provide improved access to campus; and establish a “Front Door”

- Project a welcome image/identity to the adjacent neighborhoods and the City particularly at the campus perimeter

Parking

- Too much parking and vehicular focus won't contribute to this image
- A ramp will only be an option when students will pay the fees

Badger Street

- Explore removal

Stadium and fields

- Show increased stadium and athletic facility opportunities

Th-5

Thursday November 20 (continued)

1:00 – 4:00

Potential follow-up meetings with individuals or groups

Athletics

- Losing the State track meet is a concern– need a better facility
R Oshkosh is moving ahead
- Football and track are OK, however not all track events can be accommodated
- Football/soccer conflicts occur, but with lights practices could be staggered
- Still need good grass on the soccer fields
- Keeping these practices and games on campus is important
- Other events – High school football and post season, and football extravaganza fundraiser

Physical Plant

Landscape walk issues

6' wide sidewalks are too small, need to be 8' minimum or 10' possibly

Circles work well except the one just west of Murphy Library

Badger Street at the east end could dip to the south and merge parking

Bike parking at entrances need to be at one side for snow removal

Snow

Always leave space for snow removal and storage

Salt usage is light

With less than 1-1/2 inches, snow is cleared with broom attachments

Greater snowfall or heavy snow-plows are used

ADA sidewalk ramps need to be 6'-8' wide for snow removal
Canopies at building entrances

Trash Collection

Dumpsters need to be user-friendly and visible for bikes/pedestrians
Trash collectors are front-loading
Need areas for trucks to get out of pedestrian traffic
Larger dumpsters are 6 cy, however, not all enclosures fit these large dumpsters

Deliveries

Block sidewalks for deliveries
Designated areas for service/delivery vehicles are needed
Contractors have no regard for lawn/landscape

East Avenue North

Currently parking is on both sides of the roadway

Fine Arts

Add parking between service docks on west side of building

Fences

Keep kids on the walks

Drake Field

Too much volume

Building/campus character

Good:

- Clock Tower
- Open areas on campus
- Lindner Forest

Bad:

- Grassy Knoll

**University of Wisconsin – La Crosse
Master Planning Public Open House Summary****April 29, 2004****Overview:**

As a master planning process for the University of Wisconsin La Crosse, a public open house was held on April 29, 2004. The open house was held during the times of 11 am-2 pm and 5-7 pm in the Great Hall of the Cleary Alumni and Friends Center. The purpose of this open house was to seek comments on two concept plans for the long-range development of the UW-L campus. These comments, along with other studies and analysis will be used to narrow the two alternative concepts to one consensus alternative for refinement into a final master plan. Following are comments received from open house attendees

Summary of Comments Received:

- Keep City municipal pool open.
- Prefer Campus Mall
- Like most of the concept – I am concerned about the hammer/javelin areas moving to north campus. Would hate to see a unique total track and field facility (presently) split up. Also have some concerns about priorities for chronological development. We recently put up a \$30 million science center but one of the top priorities is a huge addition to Cowley???
- Visitor Center excellent idea, keep by the Cleary Center.
- Close Pine Street.
- Maintain delivery to the Library.
- Leave green space to Library's west.
- Campus Mall concept.
- Keep East Avenue as through street.
- Campus Mall Plan – I like East Avenue for North/South access.
- Buildings okay but leave Drake Field.
- Central Square – Like northwest corner plan.
- No residential hall in Coate Field – Residence Hall where Whitney is.
- Drake Field needs to always be greenspace! Students deserve a yard to play and program.
- Remove Vine Street south of Fine Arts, have 18' walkway and increase size of parking.
- Any parking ramps should be adjacent to: Stadium, Wimberly, Union (2nd ramp at Stadium/Mitchell?).
- Will the area west of Coate be changed from LaCrosse parkland to UW-L property?
- Remove Hutchinson Hall and create greater space for a new larger Residence Hall, much used space available around Hutchinson.
- Why take down Baird Hall? There is room for a new academic building and keep Baird?
- Remove White to have parking for new Union-Stadium-Wimberly.
- Sizes of all additions are overstated – need to be more realistic on space needed, e.g. Cowley is to triple in size?

- Safety concern with street through campus.
 - A new stadium could possibly have the new field turf; similar to what UW-Eau Claire is currently doing.
 - Overhead walkways between main facilities.
 - Prefer the Campus Mall Plan.
 - At this point, I vote for “Mall Area” plan.
 - Great opportunity for campus comments and conversation.
 - Would suggest walkways to immediate building entrances to be logical to anticipated student walking path, i.e. curved or tapered walkways, diagonals, etc.
 - Great overall plan!
 - I embrace the campus mall plan – the idea of a way for vehicular traffic to move North/South across campus is good. I was always sad to see that ability disappear in years past.
 - A football field that is “dug-in” similar to UW-Whitewater, creates a bowl-like stadium look without the higher cost.
-
- Consider an outdoor classroom.
 - Need to work with City on increasing bus frequency and enforcement of two hour parking in neighborhood.
 - Overall I like the “Mall” concept plan better visually as well as traffic flow.
 - Concern regarding pushing parking into neighborhood on South side.
 - Take 14th Street option from Central Square Plan and combine with Mall Plan.
 - Set up designated parking on a temporary basis (repair/mail truck) so everyone does the same.
 - I like the North/South (LaCrosse St. – Campbell/State St.)!
 - Open exit to Campbell – then can Mitchell expand to north and allow more space for parking to south?
 - Is parking available west of Fine Arts now? 2005?
 - UW-L softball (varsity) wants a smaller field. Could the 2-field complex with lights idea be moved to North Campus and move a smaller softball field (200’ fences) field up the hill?
 - I like bringing all fields together.
 - I love more pedestrian/mall type areas.
 - Don’t put Coate as the only hall in Northwest corner.
 - Keep recreational areas near residence halls, i.e. one small one near Coate and one near Drake.
 - Mall plan.