

WISCONSIN HISTORICAL SOCIETY REVIEW 2 – 1/5/17



ARO EBERLE
ARCHITECTS

WITTICH HALL

WHS REVIEW 2 AGENDA

- Introductions (5 minutes)
- Site Work (15 minutes)
- Envelope (30 minutes)
- Interior (30 minutes)
- Summary / Next Steps (10 minutes)



AGENDA – SITE WORK

1. Site Goals

- a. Open Views to building, re-establish connectivity to campus
- b. Re-establish building entries – create focal entry experience
- c. Balance symmetry of the building mass
- d. Honor historical building context - grounded

2. Review previous meeting discussion

3. Present current approach

4. Discussion

WEST ELEVATION – HISTORICAL PERSPECTIVE



Historical Context

1. Open views of building
2. Stately presence of building on a hill
3. Building is grounded

Site Goals:

1. Open up views to building, re-establish connectivity to campus
2. Create focal entry experience - re-establish building entries
3. Balance symmetry of the building mass (1930 addition)
4. Honor historical building context – maintain grounding

WEST ELEVATION + ADDITION - ASYMMETRY



WEST FOUNDATION CURRENT



Current building is obscured by dense vegetation



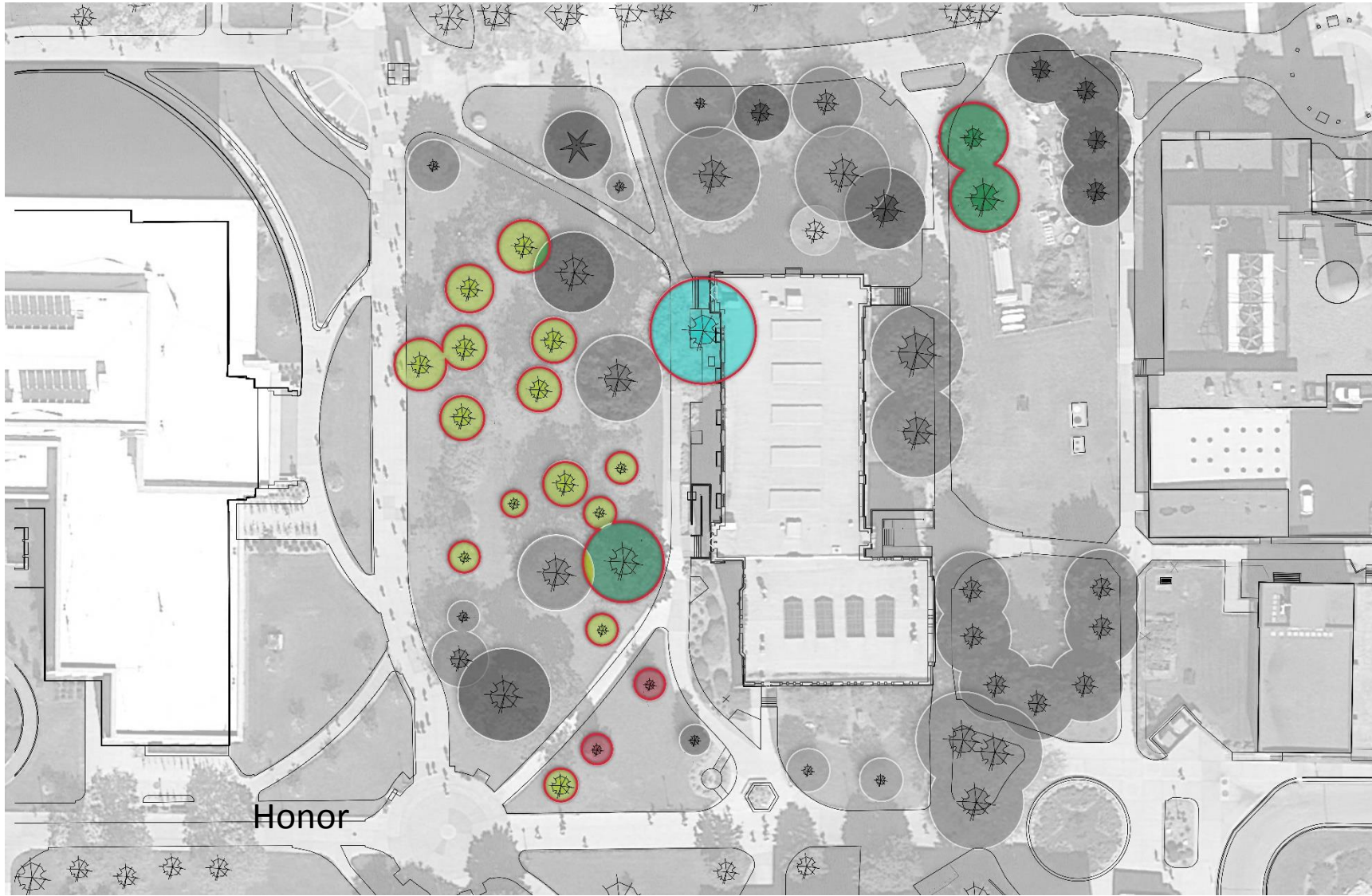
WEST ELEVATION – CURRENT VIEW FROM MALL



Current building is obscured by dense vegetation

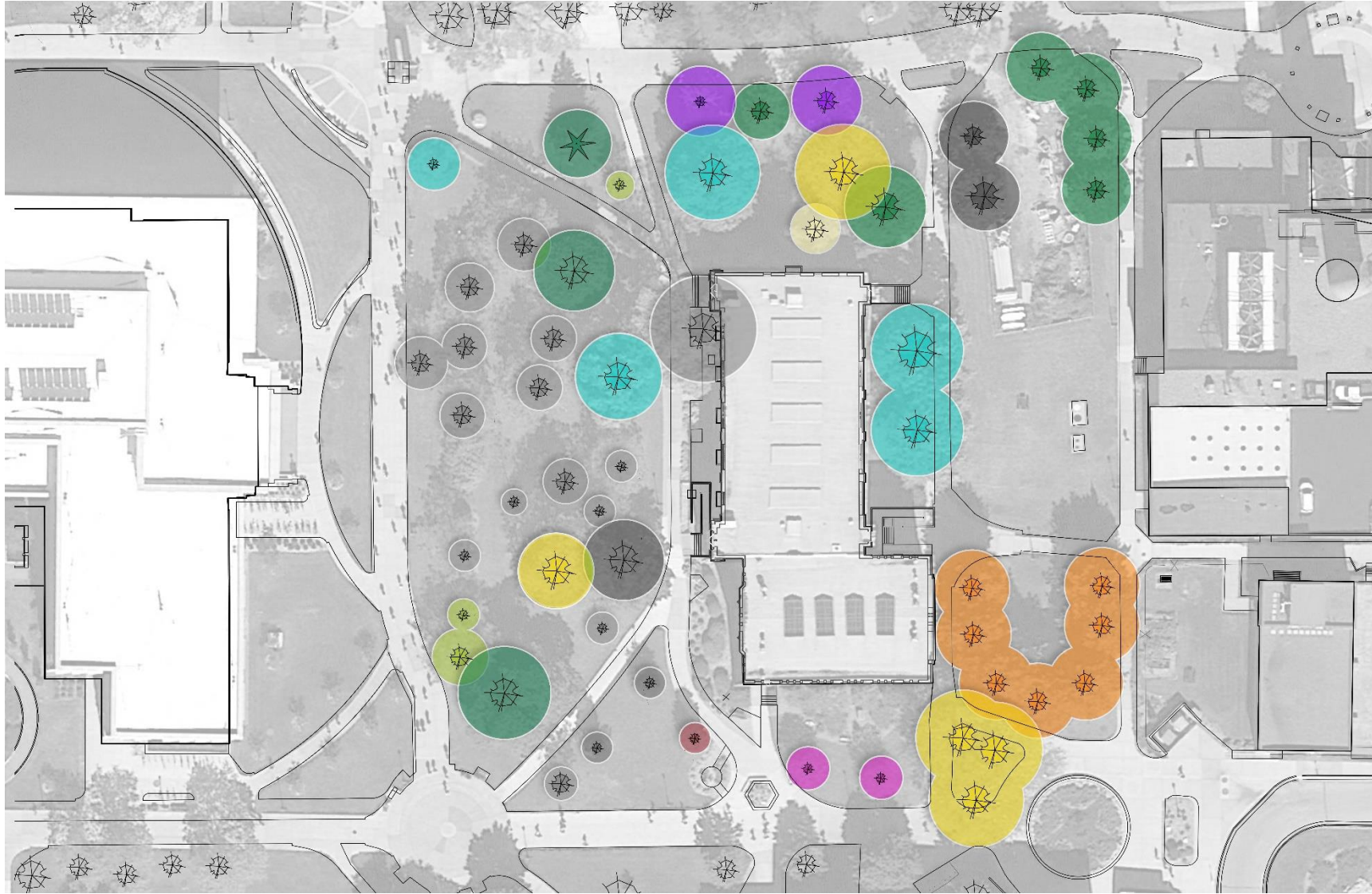


TREE CANOPY – PROPOSED REMOVAL



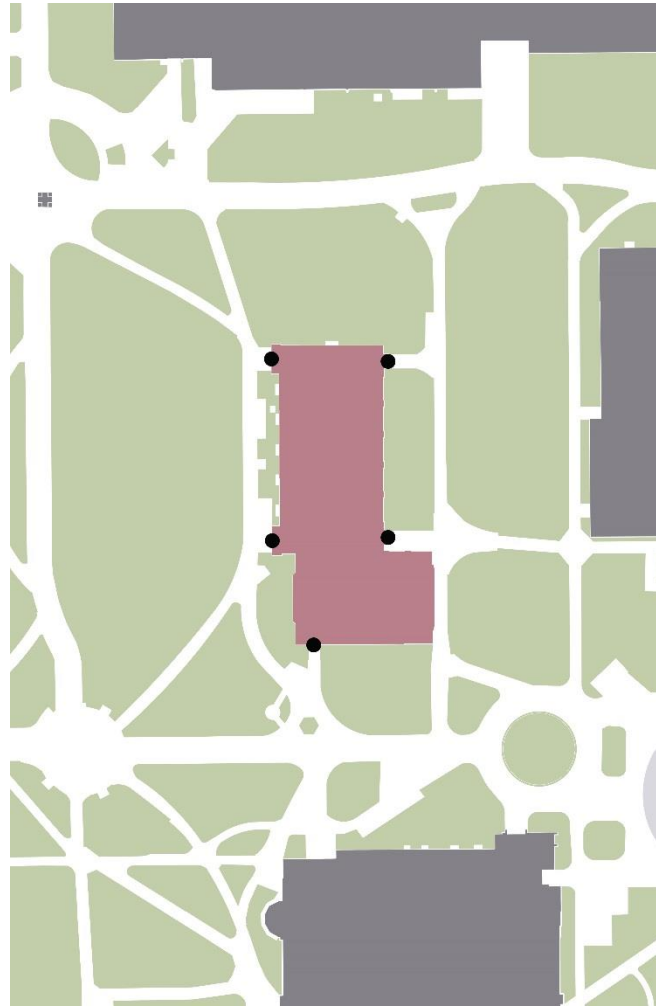
- Black Walnut
- 'Crimson King' Maple
- Flowering Crab
- Ginkgo
- Hackberry
- Honey Locust
- Norway Maple
- Red Oak
- Sliver Birch
- Norway Spruce

TREE CANOPY – TREES TO REMAIN



- Black Walnut
- 'Crimson King' Maple
- Flowering Crab
- Ginkgo
- Hackberry
- Honey Locust
- Norway Maple
- Red Oak
- Sliver Birch
- Norway Spruce

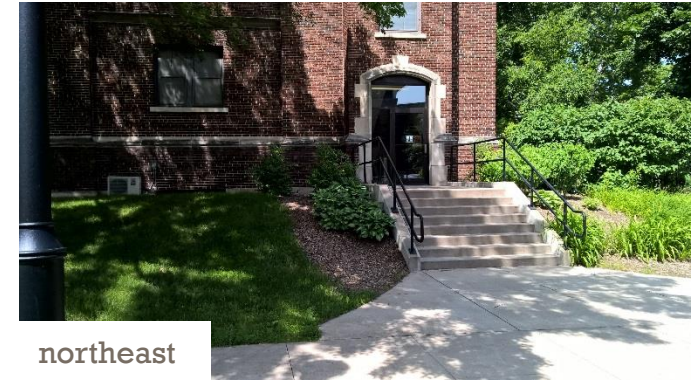
BUILDING-SITE INTERFACE



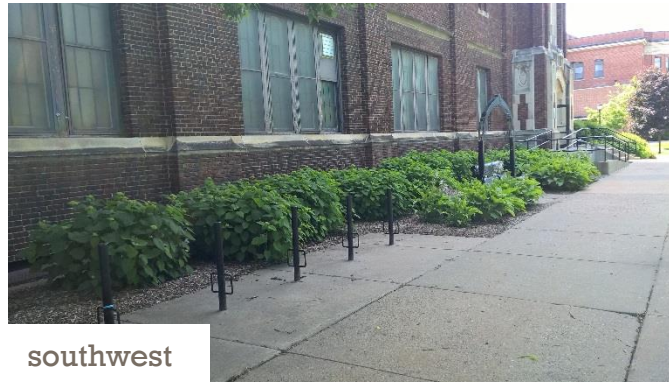
building entrances



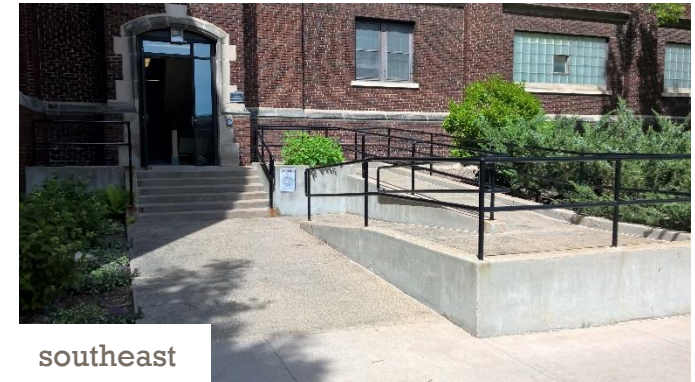
northwest



northeast



southwest

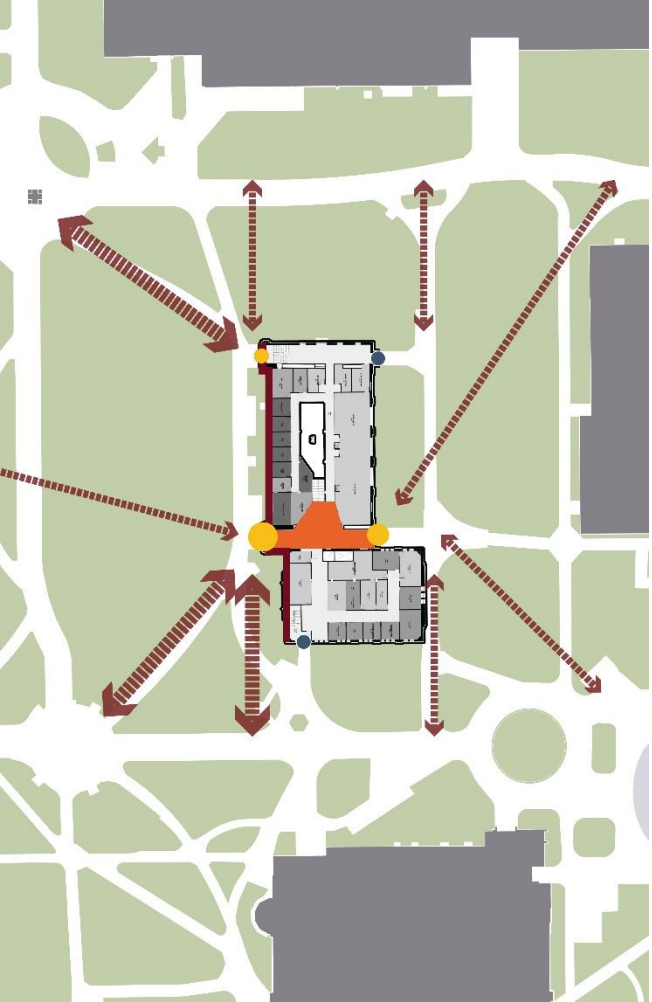


southeast

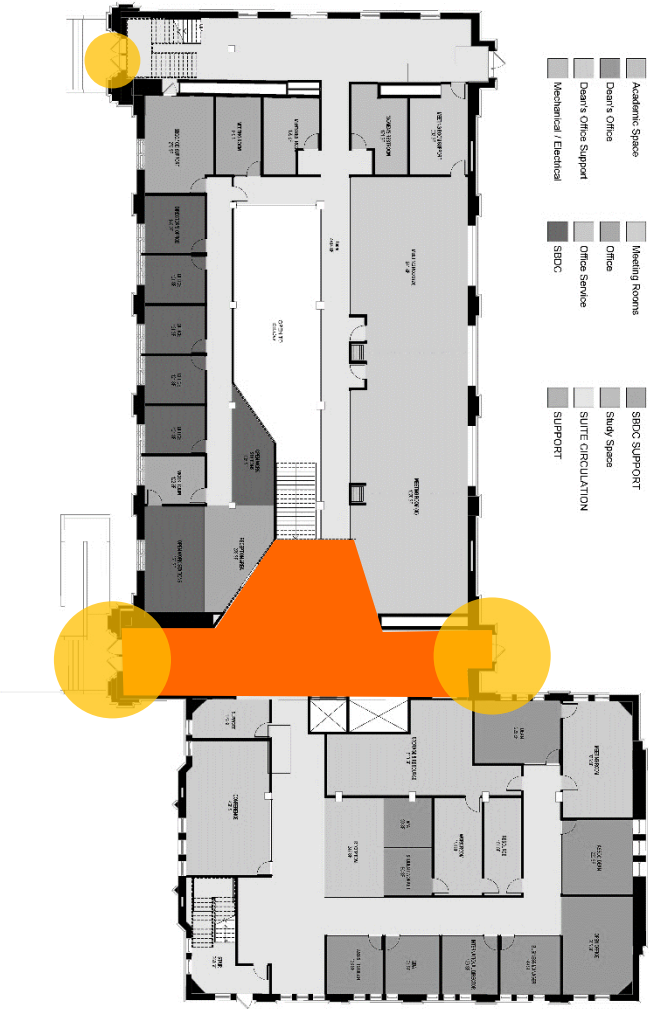


south

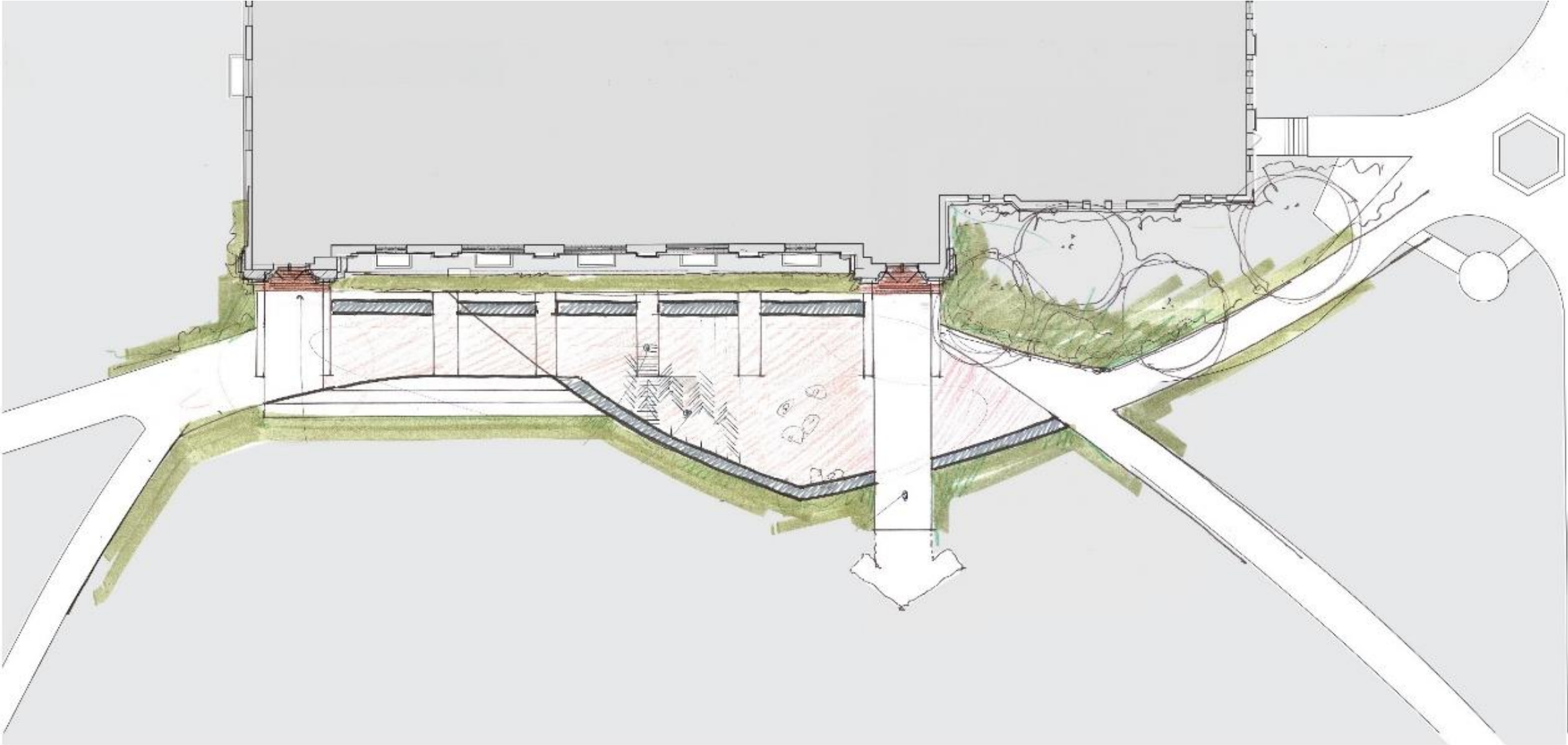
CENTRAL CORE – CREATE FOCAL IDENTITY



INTERIOR CONNECTOR



WEST ELEVATION – PREVIOUS CONCEPT



FEEDBACK TO DATE

1. Maintain historical perspective of building stature – grounded, formal entries
2. Reconnect building to Campus fabric
3. Provide exterior space for events / functions - plaza
4. Provide universal access to building

Site Goals Revisited:

- a. Open views to building, re-establish connectivity to campus
- b. Create focal entry experience, re-establish building entries
- c. Balance symmetry of the building mass
- d. Honor historical building context - grounded

WEST PLAZA



WEST ELEVATION



NORTHWEST ENTRY



NORTHWEST ENTRY



WEST MAIN ENTRY



WEST MAIN ENTRY



UPDATED SITE DESIGN



EAST PLAZA - EXISTING



EAST PLAZA



UPDATED SITE DESIGN: EAST ENTRANCE



DISCUSSION



EXTERIOR RESTORATION/REHABILITATION

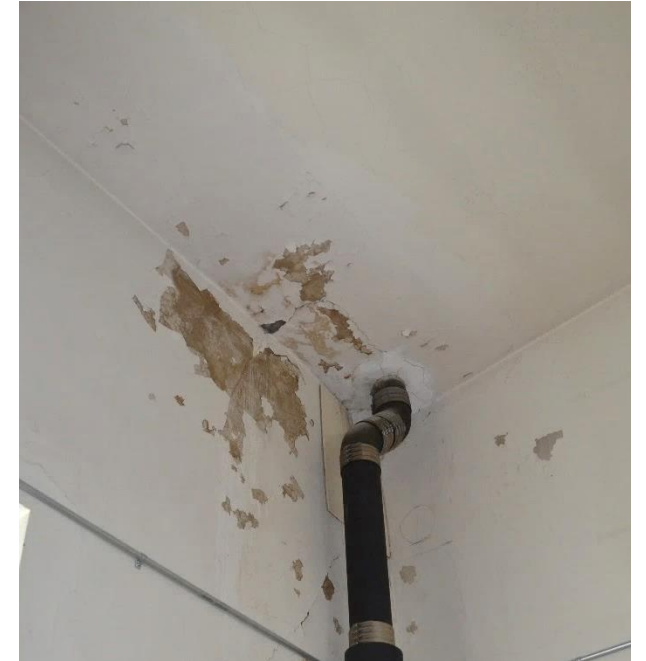
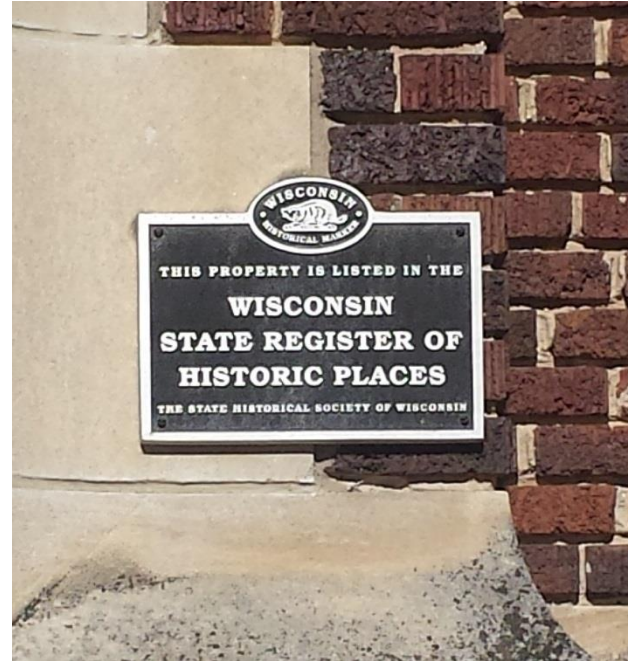
Scope of Work Summary – Exterior

- Walls
- Roofs
- Doors
- Windows
- Roof Monitors



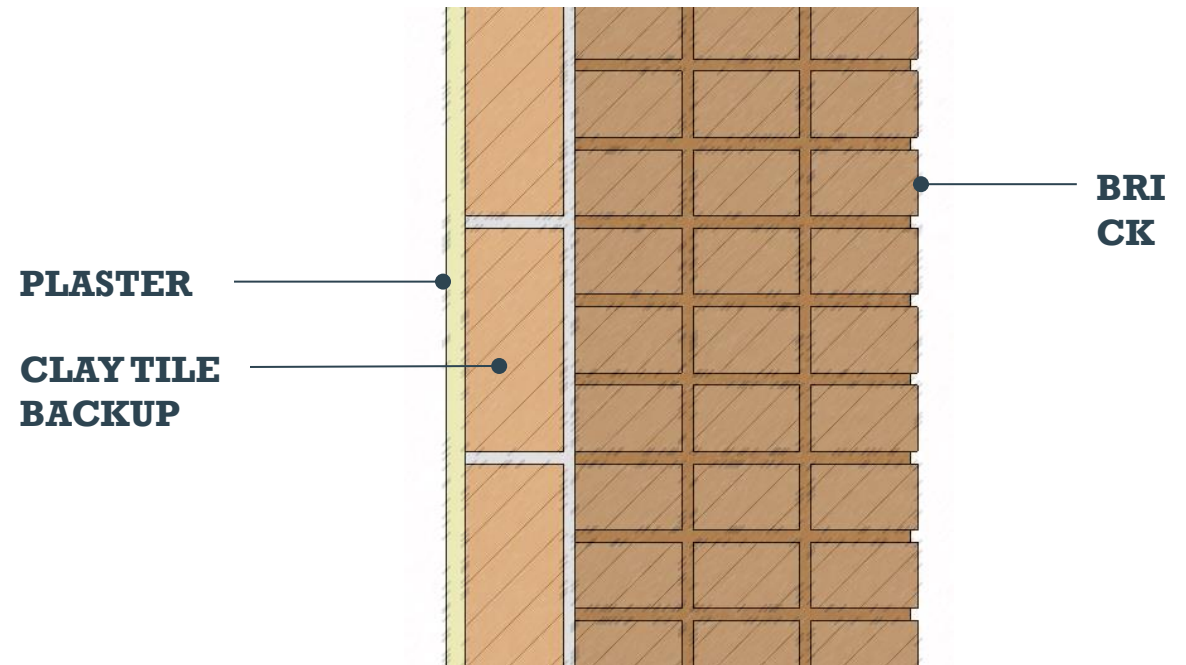
EXTERIOR RESTORATION/REHABILITATION - WALLS

- Brick
- Limestone
- Plaster
- Brick Wainscot @ Gymnasiums
 - **Express** vs Preserve and Cover
- Thermal Performance Evaluation
 - No proposed insulation to be added to wall system



EXTERIOR RESTORATION/REHABILITATION - WALLS

- Brick Masonry Restoration
 - Clean 100% of brick exterior
 - Pointing of 40% of brick joints
- Limestone Masonry Restoration
 - Clean 100% of limestone
 - Pointing of 100% of limestone joints
 - Stabilization of broken limestone panels
- Plaster Restoration



EXTERIOR RESTORATION/REHABILITATION - WALLS



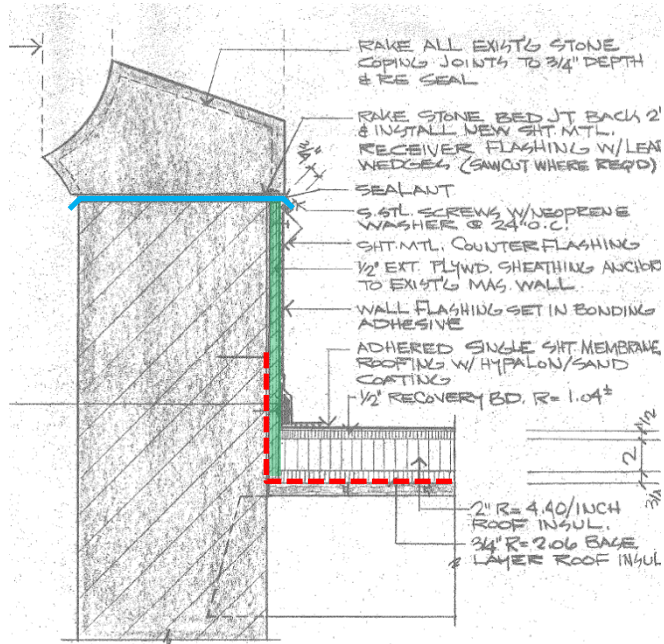
EXTERIOR RESTORATION/REHABILITATION - ROOFS

- Existing Construction (1916)
- Existing Construction (1930)
- Plaster Restoration @ Ceilings
- Proposed Scope
 - Complete Re-Roof
 - New Flashings
 - Added Insulation Thickness Where Possible
- Light Monitors
- Thermal Performance Evaluation

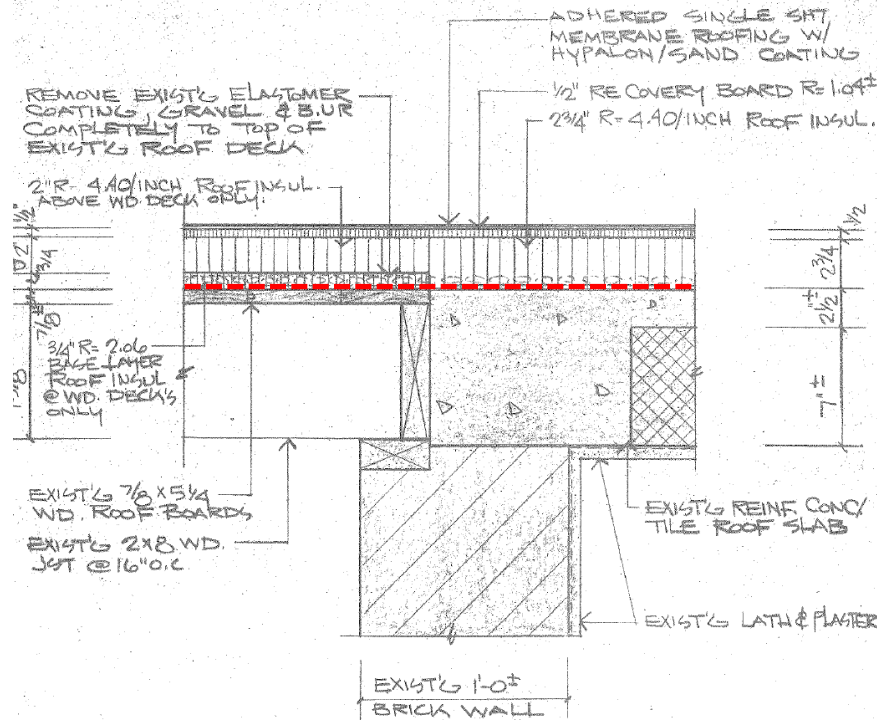


Historic Structure Report: Page 40
Preservation Plan: Pages 32-33
Drawings: AD104, A104

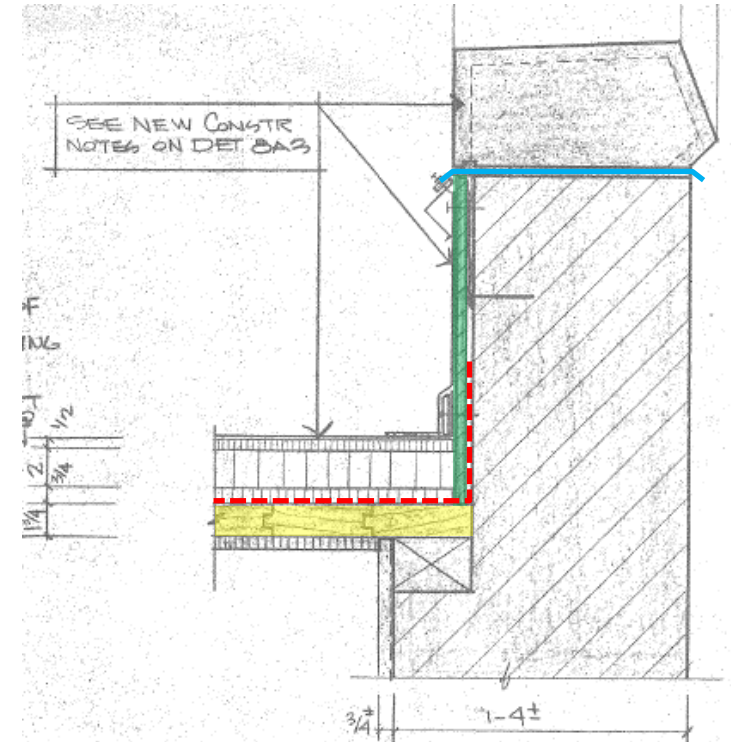
EXTERIOR RESTORATION/REHABILITATION - ROOFS



2 NEW ROOF/PARAPET DETAIL
1 1/2



3 ROOF DETAIL
1 1/2



12 NEW ROOF/PARAPET DETAIL
1 1/2

- Insulation thickness ranges from 2" to 2 3/4" (4" min. recommended). Challenges with vertical height at various parapets.
- 1930 Gymnasium has 1 3/4" structural wood decking that was originally exposed and has since been covered (highlighted in yellow).
- Verification needed if plywood sheathing was installed at back of parapets as detailed (highlighted in green).
- Installation of vapor barrier membrane will be included in roofing work (shown in red) along with flashing beneath stone coping

Historic Structure Report: Page 40
 Preservation Plan: Pages 32-33
 Drawings: AD104, A104

EXTERIOR RESTORATION/REHABILITATION - WINDOWS

- Existing Construction
 - Historic Profiles
 - Muntin Bars
 - Exterior Casings
 - Interior Casings
 - Interior Sills
- Proposed Scope
 - 100% Replacement
 - Pending WHS Decision
- Shared Experiences

Historic Structure Report: Page 33
Preservation Plan: Pages 18, 24-31
Drawings: A501, A502



UW-Stout Harvey Hall – Historic Photo

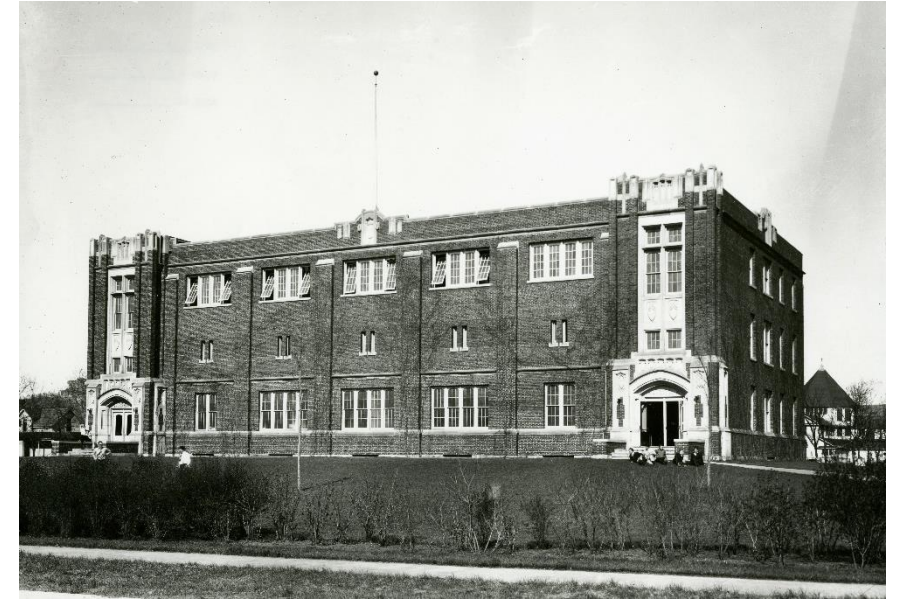


UW-Stout Harvey Hall – Prior to Renovation

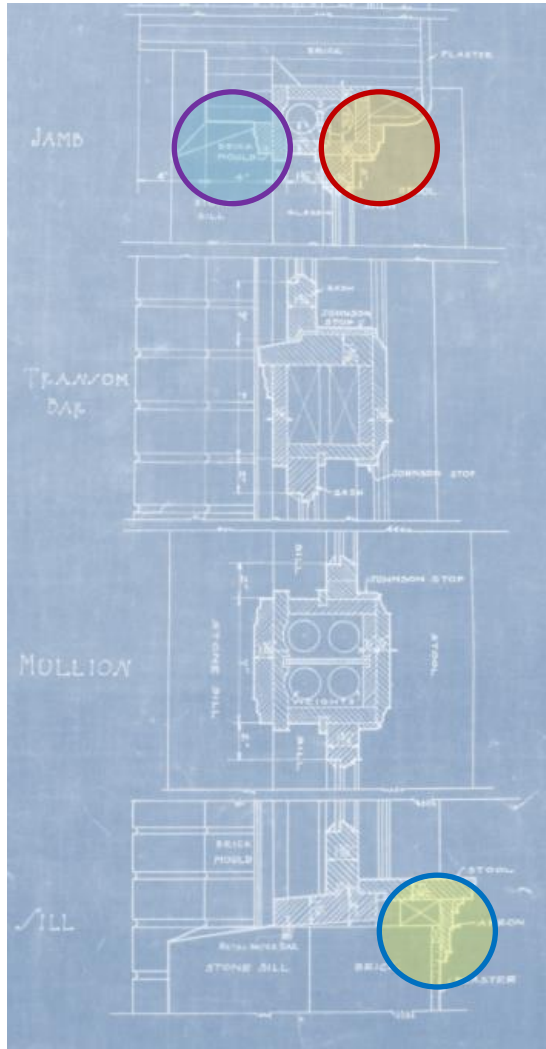
EXTERIOR RESTORATION/REHABILITATION - WINDOWS

Historic Structure Report: Page 33
Preservation Plan: Pages 18, 24-31
Drawings: A501, A502

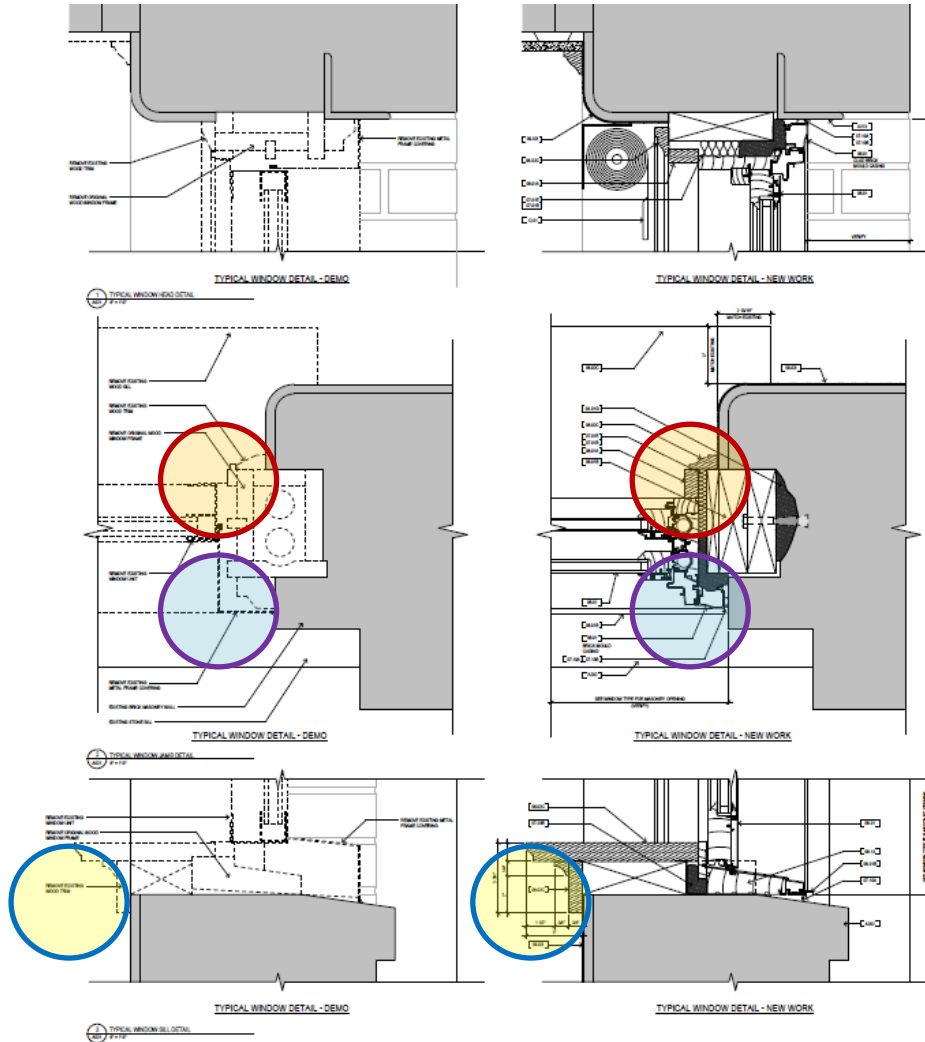
- Window Evolution
- Replacements & Retrofits
 - Over 50% are Non-Original Units
- Historic Profiles
 - 1916 vs 1930
- Sash Lugs
 - 1930 Addition Only
- Glass Type
 - Clear (Diffused Original)
 - Visible Light Trans: 72%



EXTERIOR RESTORATION/REHABILITATION - WINDOWS



UW-Stout Harvey Hall – Historic Drawing



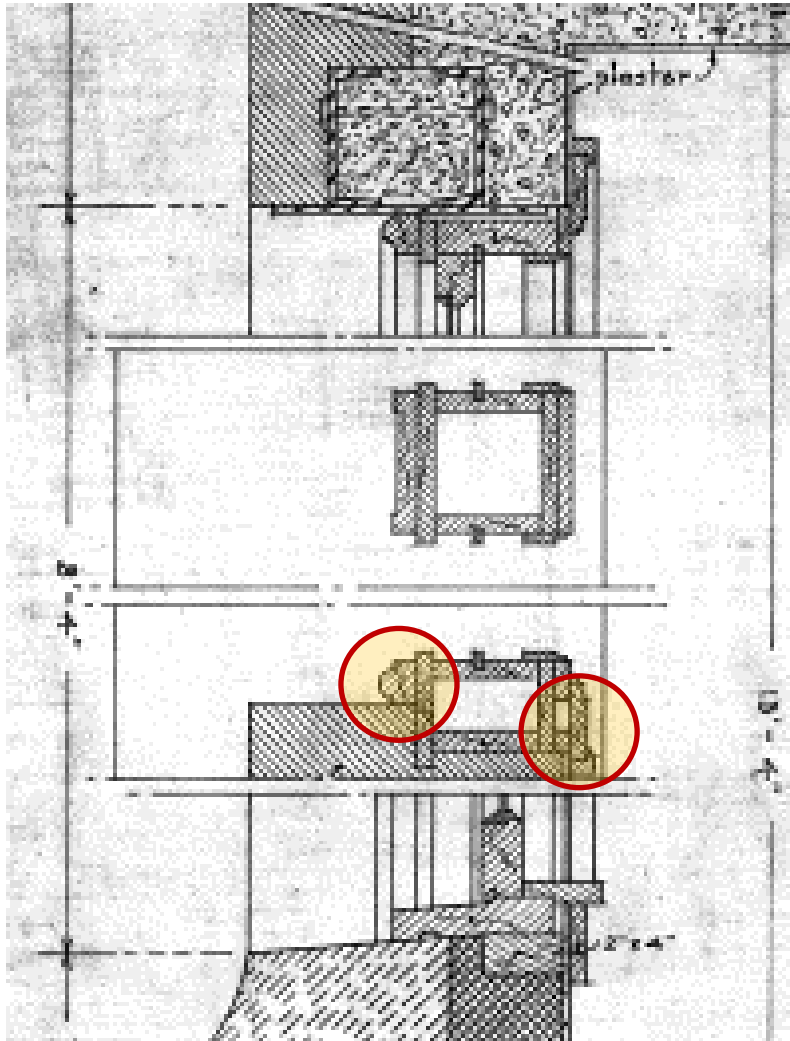
UW-Stout Harvey Hall – Window Drawings



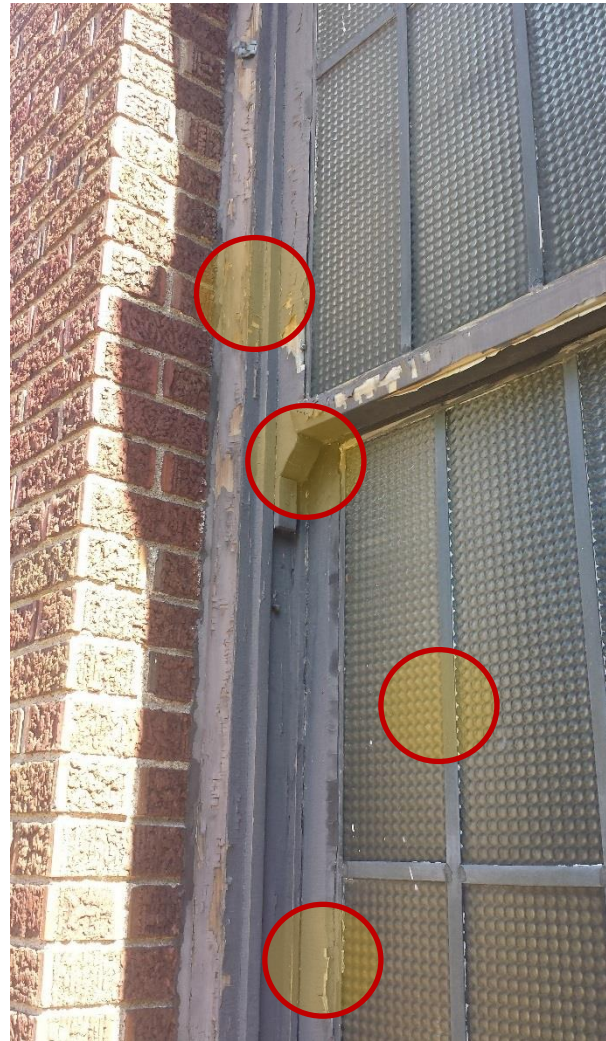
UW-Stout Harvey Hall – Completion

EXTERIOR RESTORATION/REHABILITATION - WINDOWS

Historic Structure Report: Page 33
Preservation Plan: Pages 18, 24-31
Drawings: A501, A502



Wittich Hall – Historic Drawing



Wittich Hall – Original/Existing Window



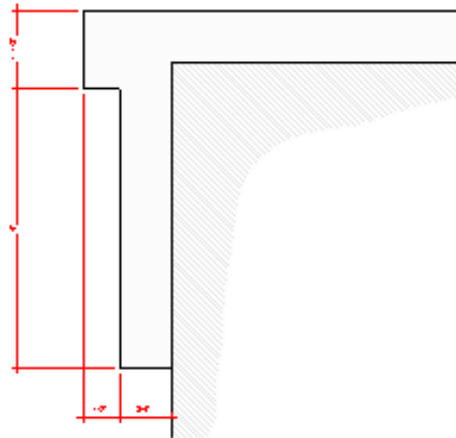
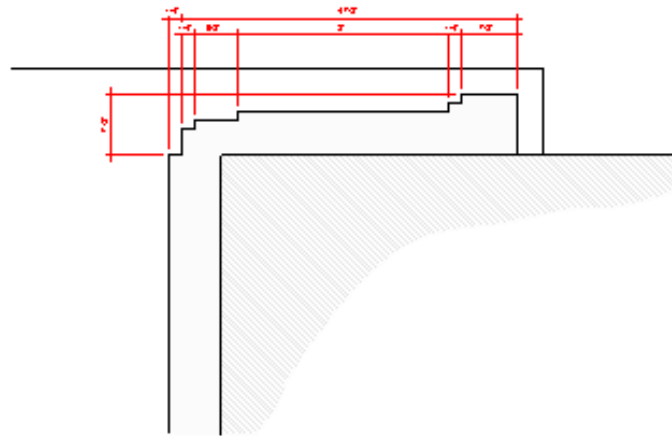
Wittich Hall – Original/Existing Window

EXTERIOR RESTORATION/REHABILITATION - WINDOWS

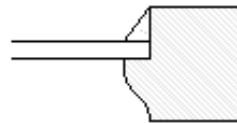
Historic Structure Report: Page 33
Preservation Plan: Pages 18, 24-31
Drawings: A501, A502



EXTERIOR RESTORATION/REHABILITATION - WINDOWS



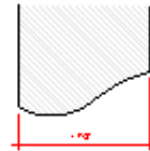
1916 WINDOW PROFILES



HEAD

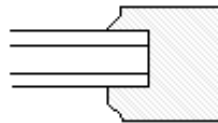


JAMB



SILL

PROPOSED PROFILES



HEAD

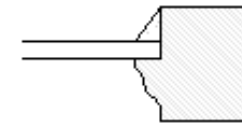


JAMB



SILL

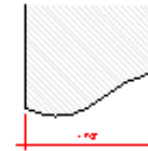
1930 WINDOW PROFILES



HEAD

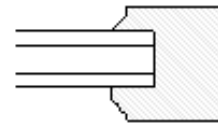


JAMB



SILL

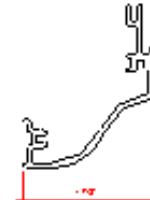
PROPOSED PROFILES



HEAD



JAMB



SILL



HEAD

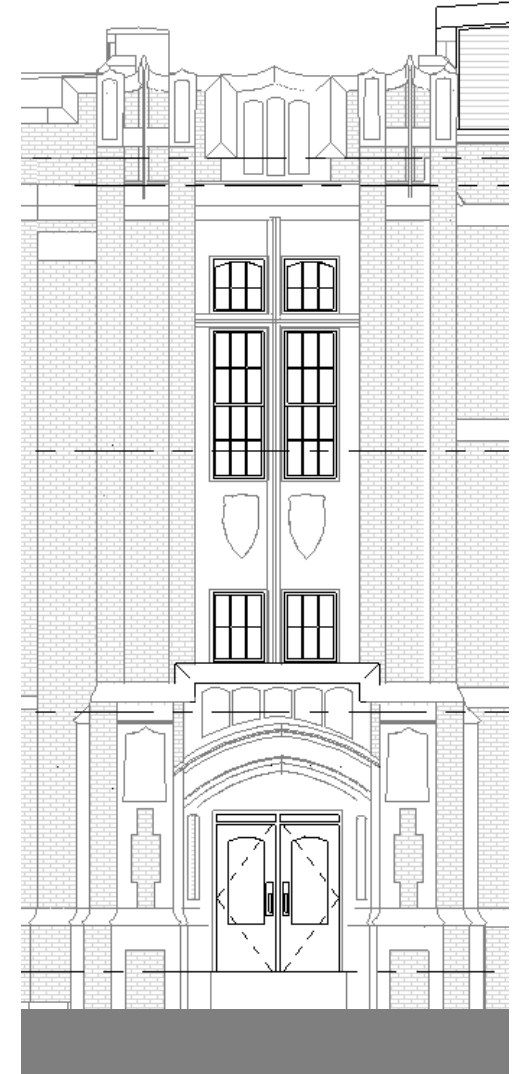
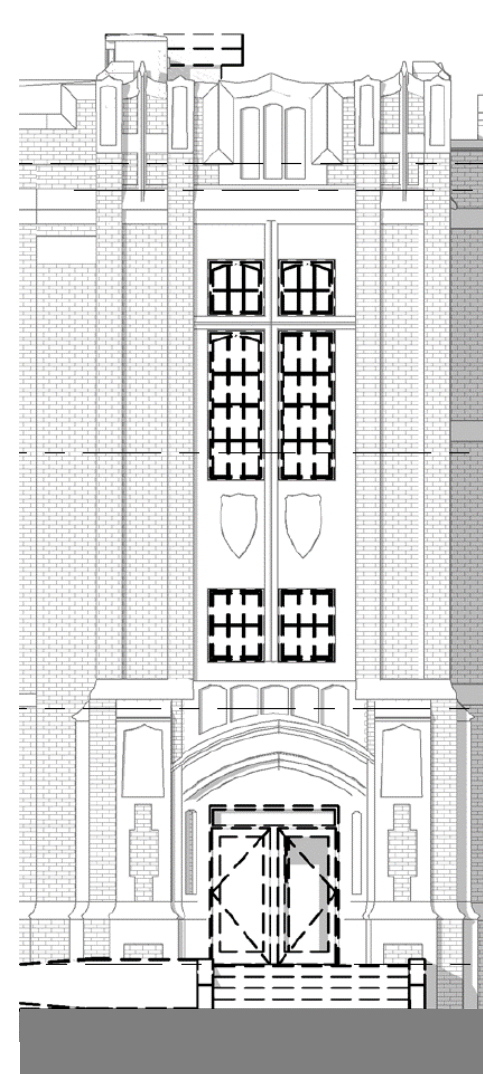
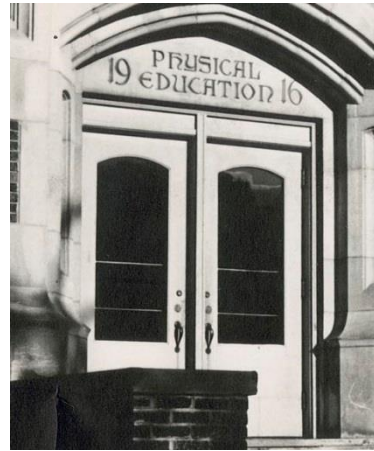


HEAD

Historic Structure Report: Page 33
 Preservation Plan: Pages 18, 24-31
 Drawings: A503

EXTERIOR RESTORATION/REHABILITATION - DOORS

- Existing Construction
- Historic Profiles
 - Exterior Casings
 - Interior Casings
- Proposed Scope
 - 100% Replacement
 - Metal-Clad Wood Doors



Historic Structure Report: Page 32
Preservation Plan: Page 24-31
Drawings: A502
















AGENDA – INTERIOR

1. Review previous meeting discussion
2. Present current approach
 - a) Entry lobbies and stairs
 - b) Floor openings
 - c) New floors within gymnasiums
 - d) Interface with exterior walls
3. Discussion

GROUND FLOOR



GROUND FLOOR

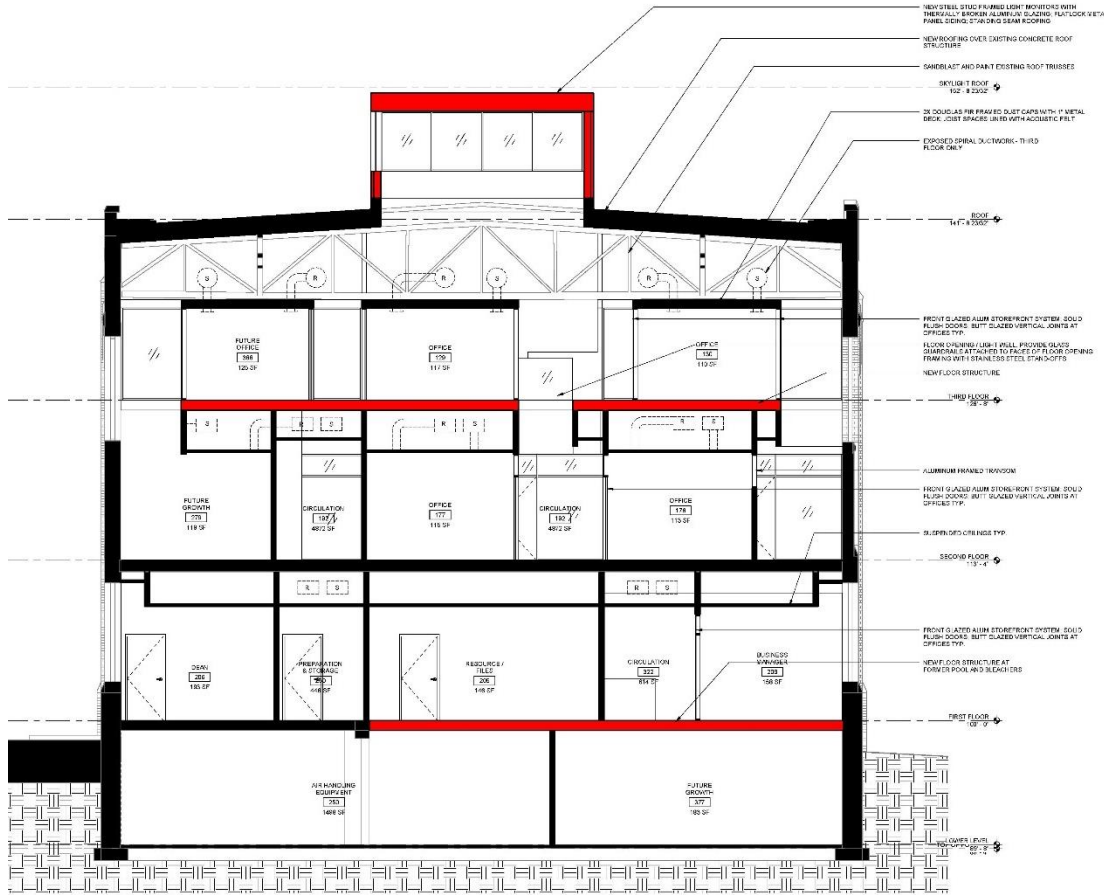
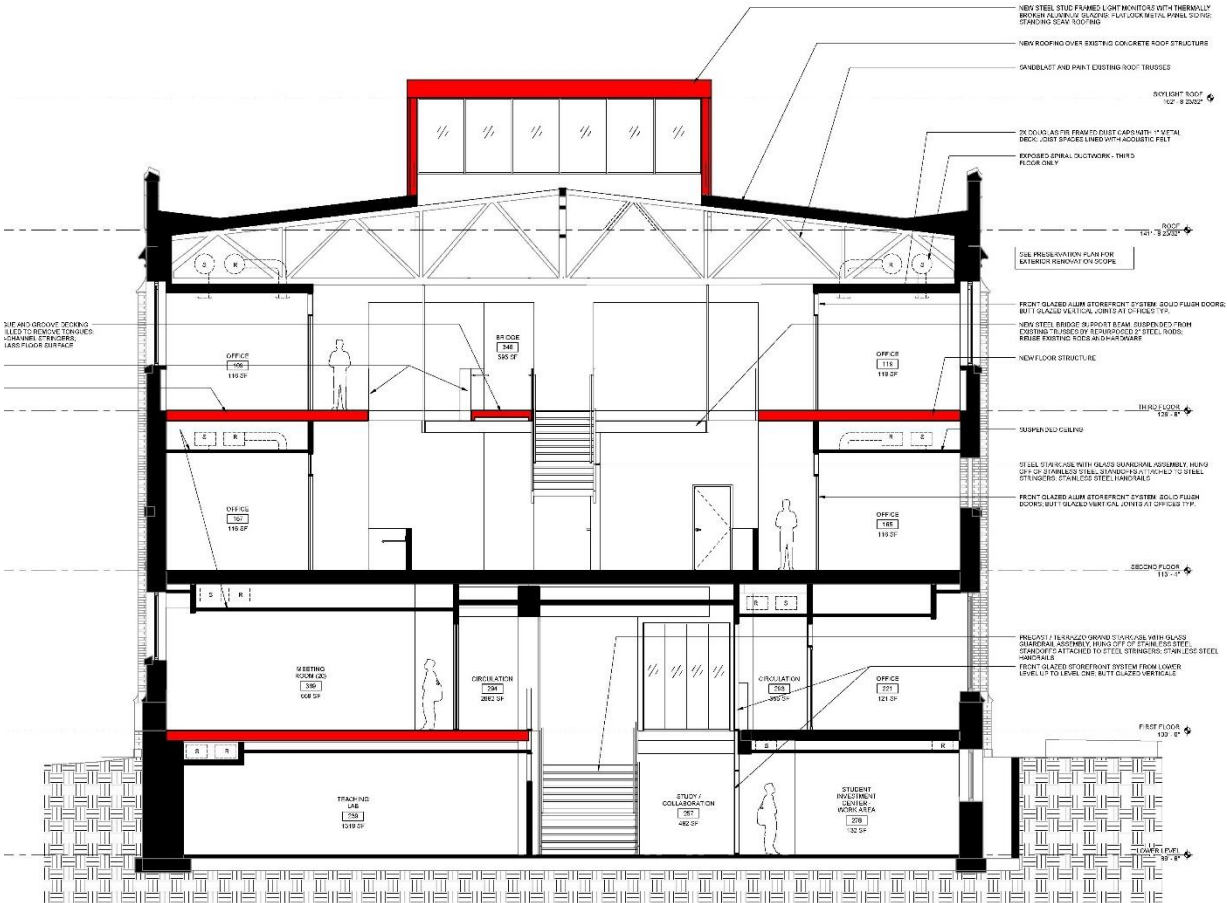
- | | | |
|---|--|---|
|  Academic Space |  Meeting Rooms |  Study Space |
|  Dean's Office |  Office |  Suite Circulation |
|  Dean's Office Support |  Office Service |  Support |
|  Future Growth |  SBDC | |
|  Mechanical / Electrical |  SBDC Support | |

Full Preservation



Partial Preservation

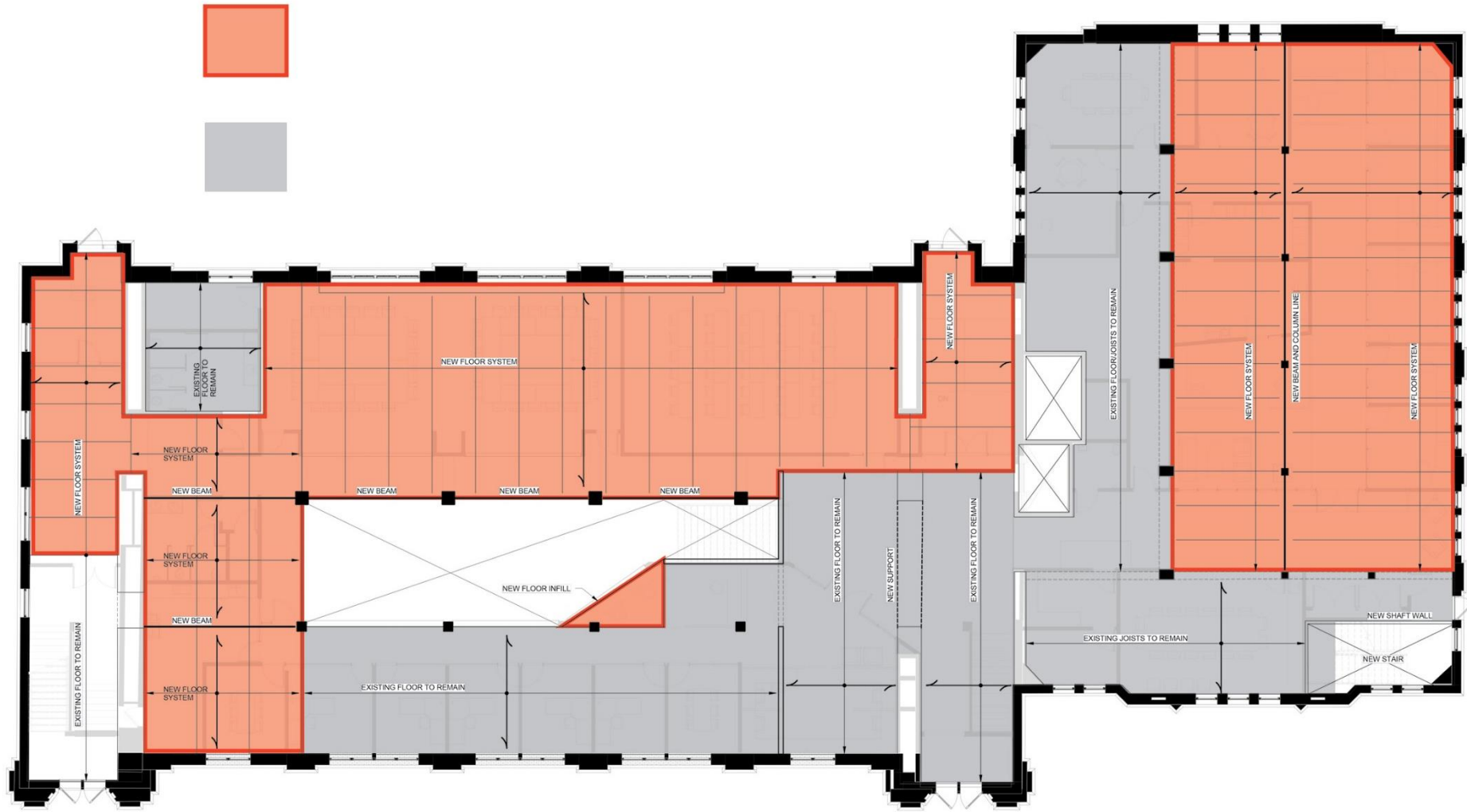
NEW FLOORS



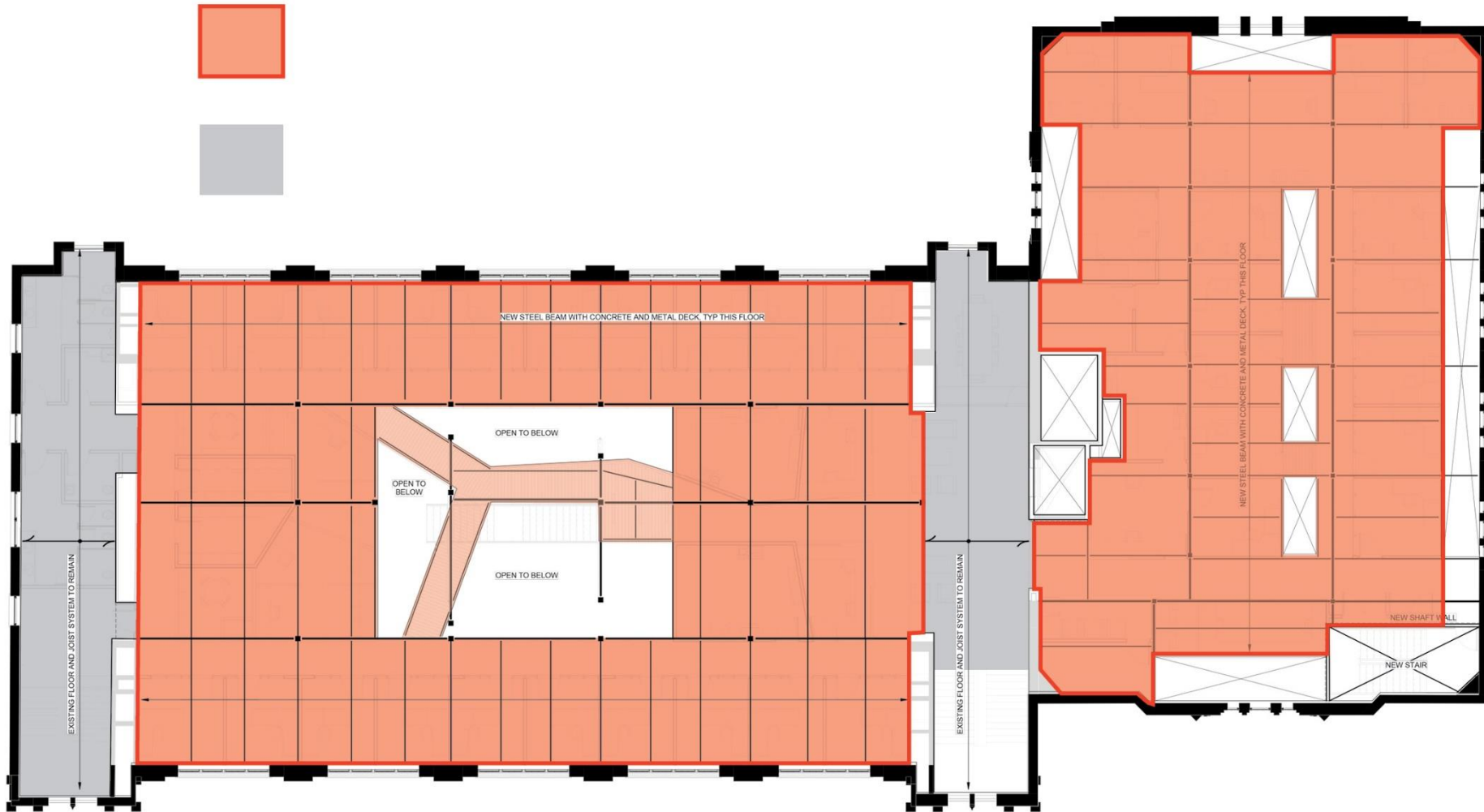
1916 BUILDING SECTION

1930 BUILDING SECTION

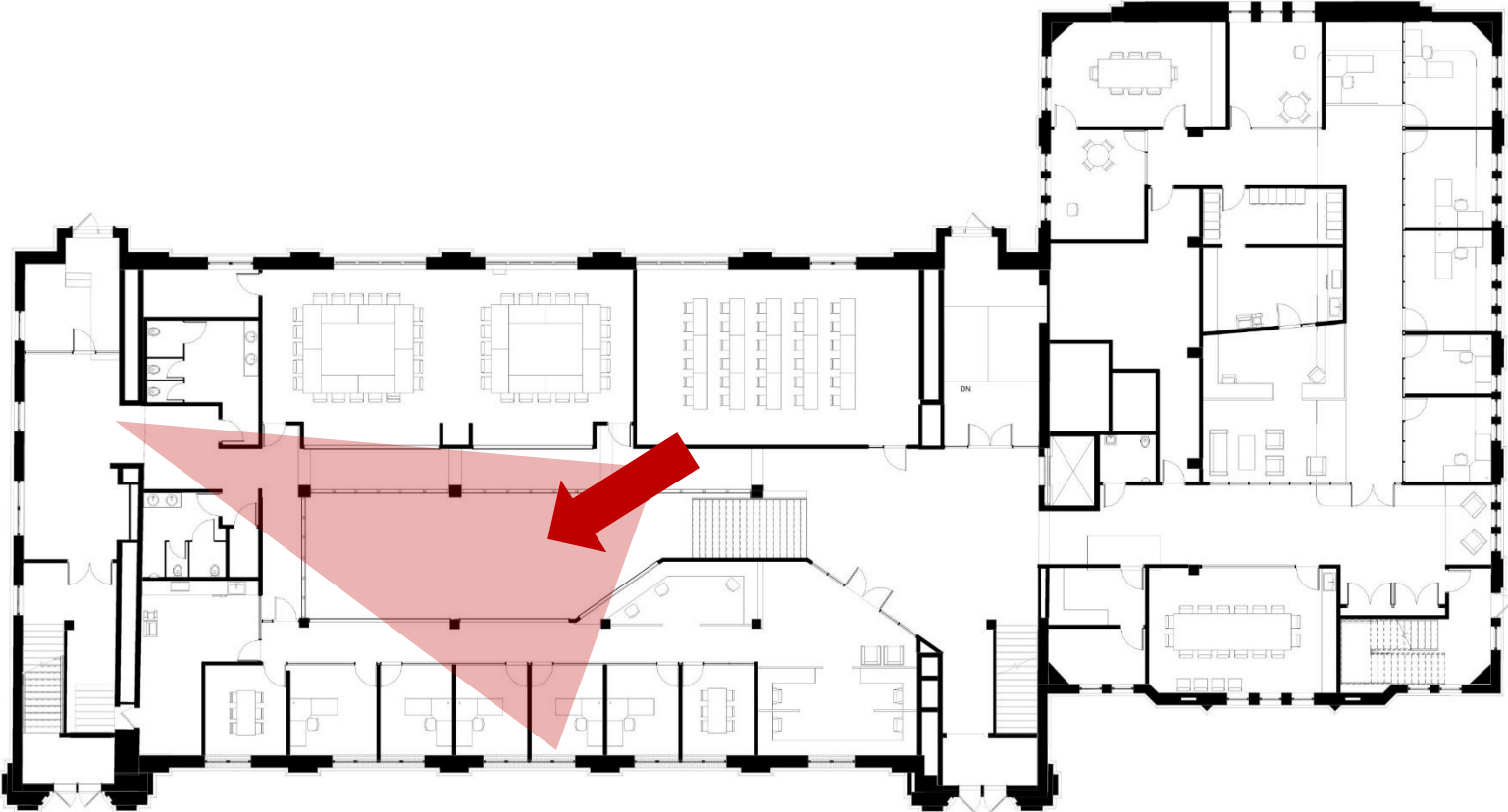
NEW FLOOR – GROUND LEVEL



NEW FLOOR – THIRD FLOOR



INTERIOR RENDERINGS





ARO EBERLE
ARCHITECTS

LOWER LEVEL



SECOND FLOOR



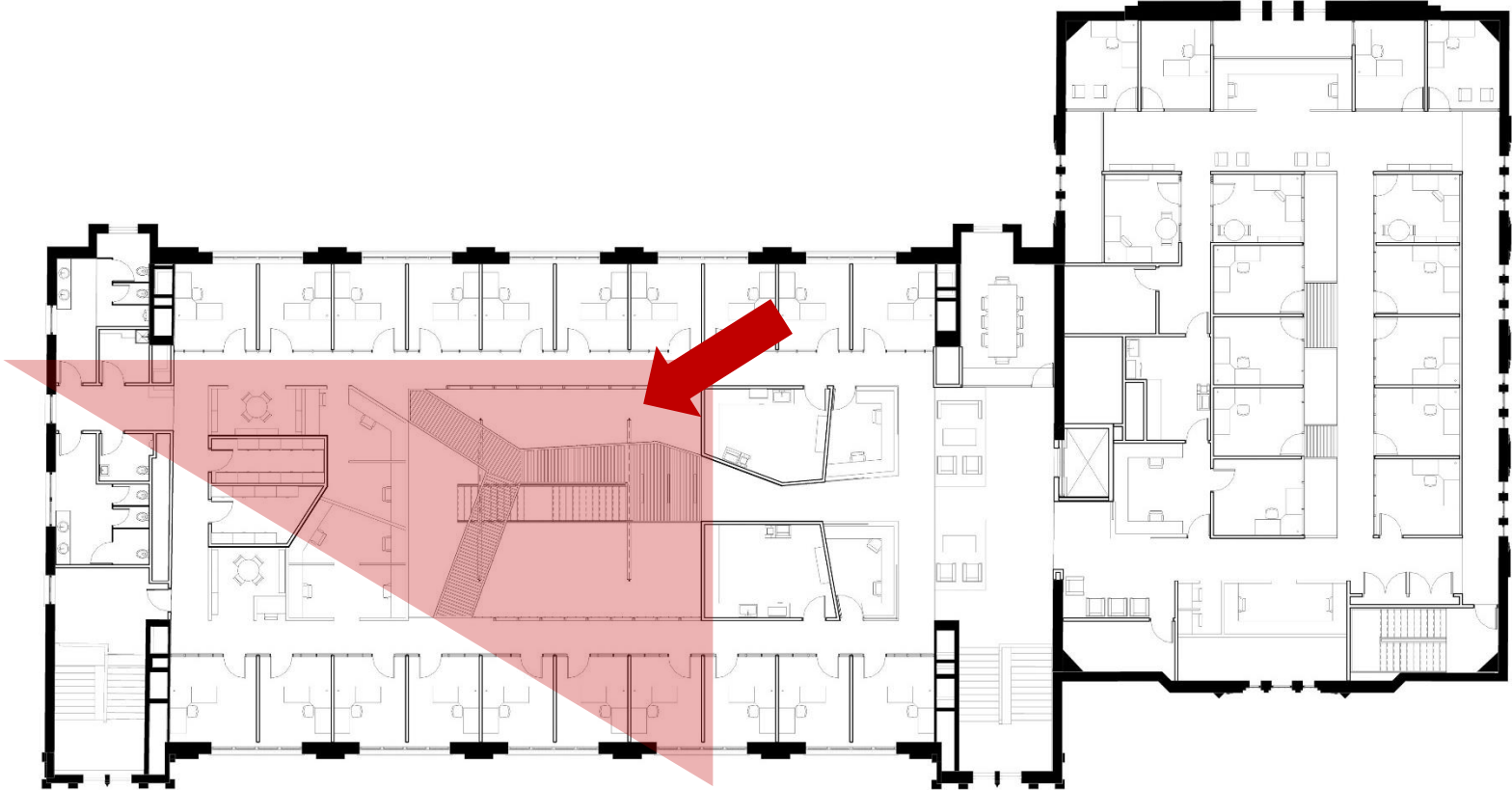
- | | | | |
|-----------------------|-------------------------|-------------------|---------|
| Academic Space | Mechanical / Electrical | SBDC | Support |
| Dean's Office | Meeting Rooms | SBDC Support | |
| Dean's Office Support | Office | Study Space | |
| Future Growth | Office Service | Suite Circulation | |

THIRD FLOOR

- Academic Space
- Dean's Office
- Meeting Rooms
- Office
- Study Space
- Suite Circulation
- Future Growth
- SBDC
- Mechanical / Electrical
- SBDC Support
- Support



INTERIOR RENDERINGS





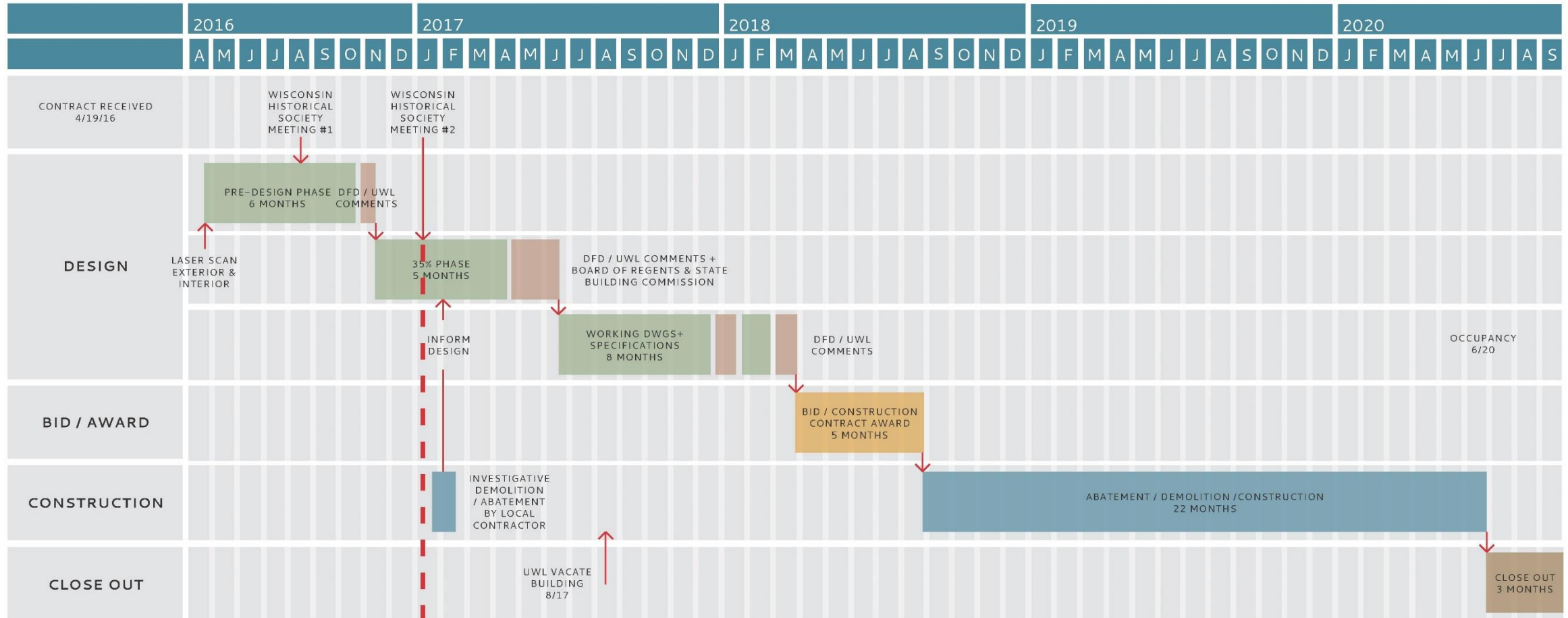
ARO EBERLE
ARCHITECTS

SUMMARY / NEXT STEPS

1. Schedule / Work Plan
2. 35% Review



PROJECT WORK PLAN



35% PHASE WORK PLAN

